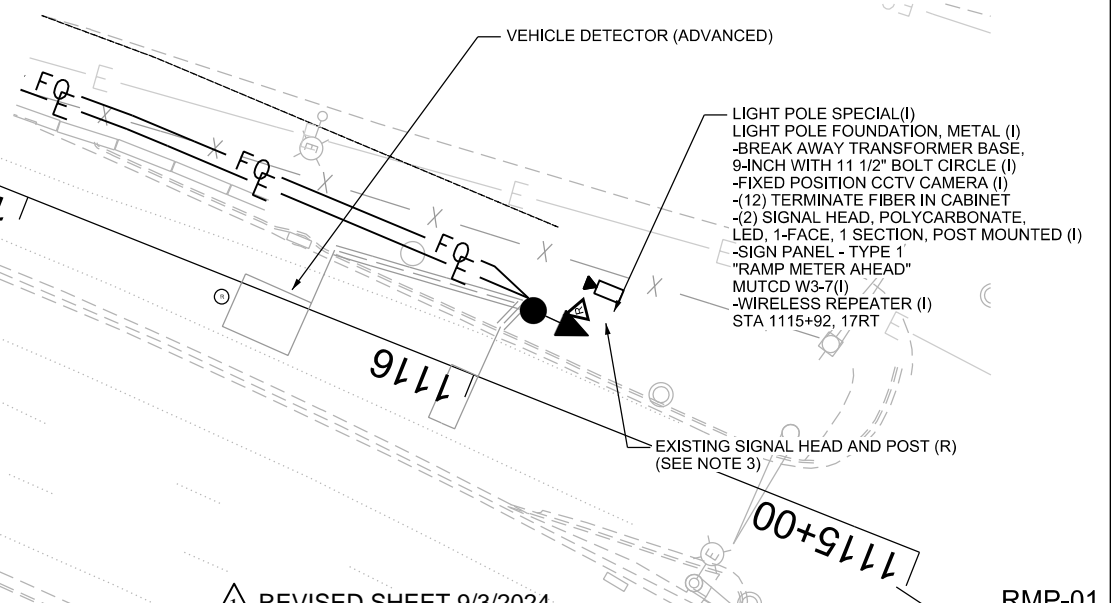
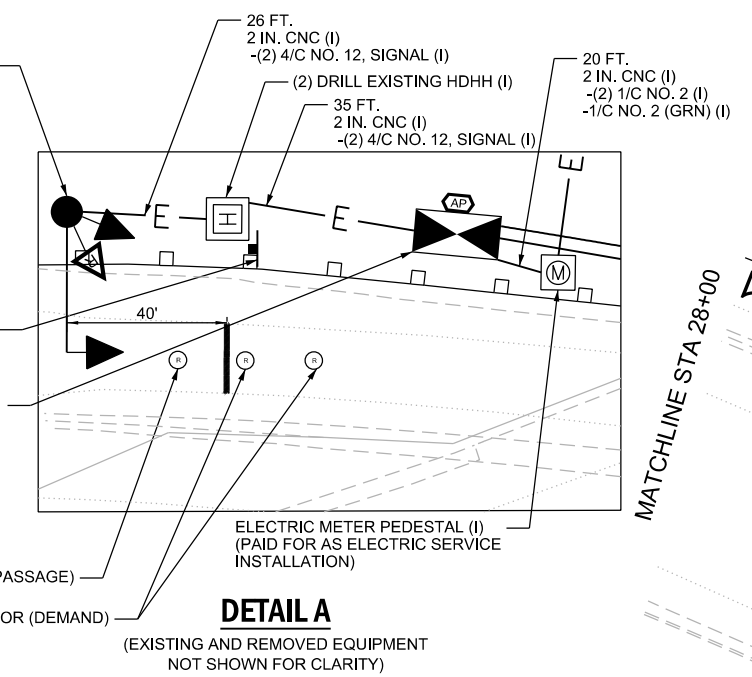


- NOTES:
1. REPEATERS TO BE MOUNTED ON LIGHT POLE AT 20' ABOVE SURFACE OF PAVEMENT WITH SENSORS. WIRELESS REPEATERS PAID UNDER WIRELESS VEHICLE DETECTION SYSTEM.
 2. SEE ITS PLANS FOR CORRESPONDING MAINLINE DETECTORS.
 3. EXISTING WARNING SIGN ASSEMBLY TO BE REMOVED. PAID FOR AS REMOVE EXISTING SIGNAL HEAD AND POST.
 4. EXISTING RAMP METER SERVICE ELECTRICAL CABLING SHALL BE REMOVED. CONDUIT AND LOOP DETECTOR LEAD-IN CABLES TO BE ABANDONED.
 5. WIRELESS DETECTOR IN-CABINET PROCESSOR MODULE, ACCESS POINTS, REPEATERS, IN-PAVEMENT WIRELESS DETECTION UNITS, CALIBRATION, AND ASSOCIATED CABLING WILL BE PAID FOR AS WIRELESS VEHICLE DETECTION SYSTEM.
 6. MAINLINE SURVEILLANCE DETECTION TO BE READ BY RAMP METER WIRELESS VEHICLE DETECTION SYSTEM.
 7. DESIGN TO REUSE CONDUIT ATTACHED TO STRUCTURE FOR POWER AND FLASHER CABLES AND INSTALL A NEW CONDUIT FOR FIBER OPTIC CABLE. SEE DETAIL DET-11.
 8. NETWORK AND LOCAL 12SM FIBER OPTIC CABLES SHALL BE PLACED IN THE SAME CONDUIT.
 9. RAMP METER SIGNAL POST AND FOUNDATION TO BE REMOVED 12" BELOW SURFACE. RESTORATION AS PAVEMENT, TYPE I, 12 INCH.
 10. ELECTRICAL METER PEDESTAL TO BE INSTALLED ON EXISTING CONTROLLER FOUNDATION. PAID FOR AS ELECTRIC SERVICE INSTALLATION. MODIFICATION OF EXISTING FOUNDATION TO SUPPORT METER PEDESTAL TO BE PAID FOR AS REMOVE EXISTING TRAFFIC SIGNAL CONTROLLER AND CABINET FOUNDATION. ESTABLISH CONNECTION TO EXISTING GROUND ROD, CAP AND SEAL UNUSED CONDUITS.
 11. FOR RAMP METER SINGLE LINE DIAGRAM SEE SHEETS PWR-01 AND PWR-02.
 12. RELACEMENT OF SERVICE AT COMED POLE REQUIRED, NOT SHOWN. PAID FOR AS REMOVE ELECTRICAL SERVICE AND ELECTRIC SERVICE INSTALLATION.

STEEL MAST ARM ASSEMBLY AND POLE, 26 FT (I)
 -CONCRETE FOUNDATION, TYPE E 30-INCH DIAMETER (I)
 -SIGNAL HEAD, POLYCARBONATE, LED 1-FACE, 2-SECTION, MAST ARM MOUNTED (I)
 -SIGNAL HEAD, POLYCARBONATE, LED 1-FACE, 2-SECTION, POST MOUNTED (I)
 -WIRELESS REPEATER (I)
 STA 1122+24, 20RT
 (SEE NOTE 9)

RAMP METER CABINET (I) [CAB-ED-B2]
 -CONCRETE FOUNDATION, 334 (I)
 -CONTROLLER, LINUX ATC (I)
 -LAYER III (NETWORK) SWITCH (I)
 -WIRELESS DETECTOR IN-CABINET PROCESSOR MODULE (I)
 -FIBER OPTIC INTERCONNECT CENTER, 48 PORT (I)
 -(24) TERMINATE FIBER IN CABINET (I)
 -WIRELESS RECEIVER & ANTENNA (I)
 STA 1121+57, 19RT



USER NAME = HOLMGRAL	DESIGNED - JS	REVISED - 8/23/2024
PLOT SCALE =	DRAWN - KK	REVISED -
PLOT DATE = 8/16/2024	CHECKED - JM	REVISED -
	DATE - 2/9/2024	REVISED -

STATE OF ILLINOIS
 DEPARTMENT OF TRANSPORTATION

RAMP METER CONSTRUCTION PLANS
 WILSON AVE TO EB I-94

SCALE: 1" = 20'

SHEET 1 OF 15 SHEETS STA. TO STA.

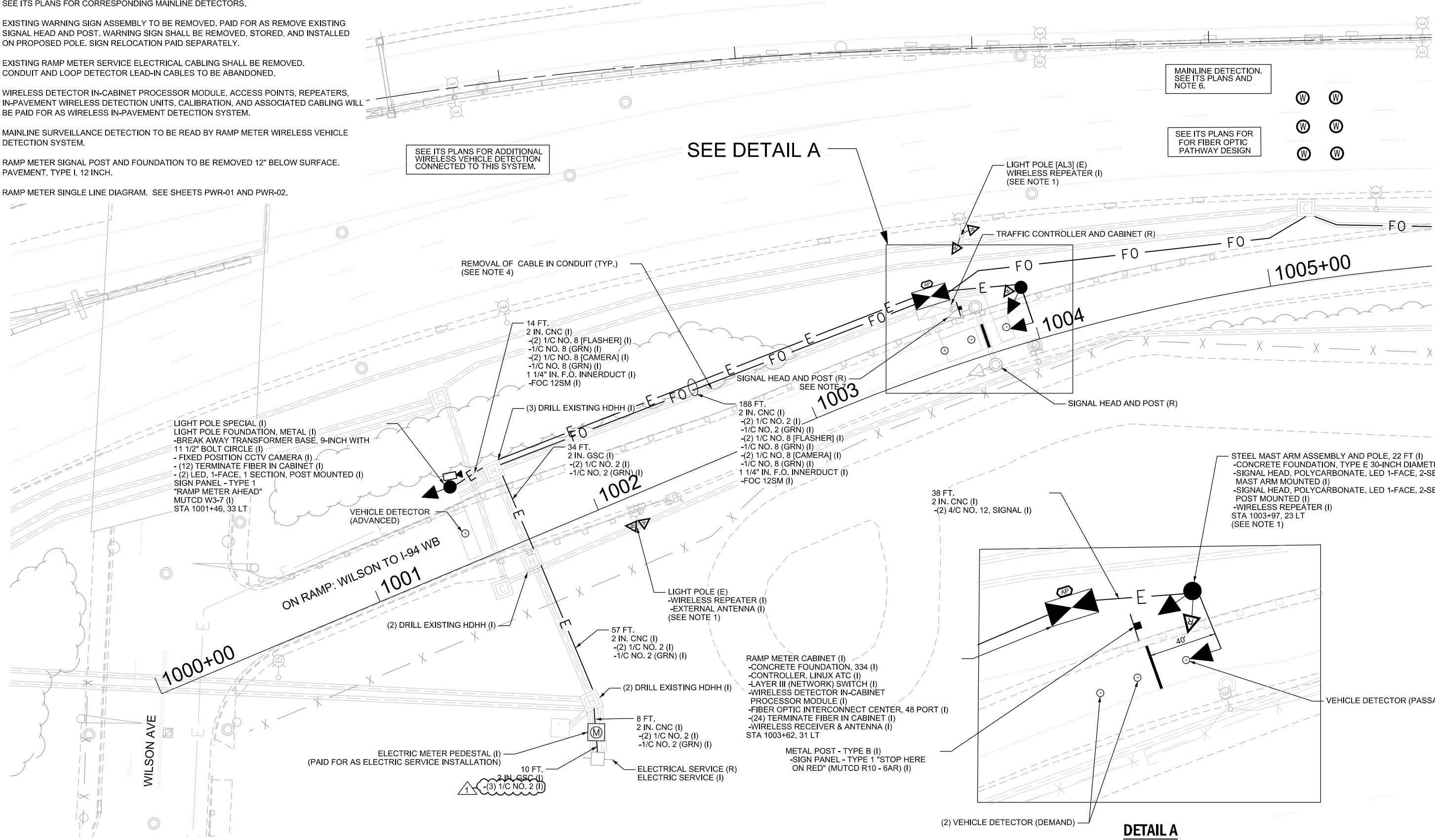
F.A.I. RTE.	SECTION	COUNTY	TOTAL SHEETS	SHEET NO.
94/41	FAP 0346 23 SIGN	COOK	208	94
CONTRACT NO. 62V17			ILLINOIS FED. AID PROJECT	

RMP-01

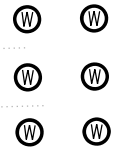
REVISION 1 REVISED SHEET 9/3/2024

NOTES:

1. REPEATERS TO BE MOUNTED ON POLE AT 20' ABOVE SURFACE OF PAVEMENT WITH SENSORS. WIRELESS REPEATERS PAID UNDER WIRELESS VEHICLE DETECTION SYSTEM.
2. SEE ITS PLANS FOR CORRESPONDING MAINLINE DETECTORS.
3. EXISTING WARNING SIGN ASSEMBLY TO BE REMOVED. PAID FOR AS REMOVE EXISTING SIGNAL HEAD AND POST. WARNING SIGN SHALL BE REMOVED, STORED, AND INSTALLED ON PROPOSED POLE. SIGN RELOCATION PAID SEPARATELY.
4. EXISTING RAMP METER SERVICE ELECTRICAL CABLING SHALL BE REMOVED. CONDUIT AND LOOP DETECTOR LEAD-IN CABLES TO BE ABANDONED.
5. WIRELESS DETECTOR IN-CABINET PROCESSOR MODULE, ACCESS POINTS, REPEATERS, IN-PAVEMENT WIRELESS DETECTION UNITS, CALIBRATION, AND ASSOCIATED CABLING WILL BE PAID FOR AS WIRELESS IN-PAVEMENT DETECTION SYSTEM.
6. MAINLINE SURVEILLANCE DETECTION TO BE READ BY RAMP METER WIRELESS VEHICLE DETECTION SYSTEM.
7. RAMP METER SIGNAL POST AND FOUNDATION TO BE REMOVED 12" BELOW SURFACE. PAVEMENT, TYPE I, 12 INCH.
8. RAMP METER SINGLE LINE DIAGRAM. SEE SHEETS PWR-01 AND PWR-02.



MAINLINE DETECTION.
SEE ITS PLANS AND
NOTE 6.



SEE ITS PLANS FOR
FOR FIBER OPTIC
PATHWAY DESIGN

SEE ITS PLANS FOR ADDITIONAL
WIRELESS VEHICLE DETECTION
CONNECTED TO THIS SYSTEM.

SEE DETAIL A

REMOVAL OF CABLE IN CONDUIT (TYP.)
(SEE NOTE 4)

- 14 FT.
2 IN. CNC (I)
-(2) 1/C NO. 8 [FLASHER] (I)
-1/C NO. 8 (GRN) (I)
-(2) 1/C NO. 8 [CAMERA] (I)
-1/C NO. 8 (GRN) (I)
1 1/4" IN. F.O. INNERDUCT (I)
-FOC 12SM (I)

- LIGHT POLE SPECIAL (I)
LIGHT POLE FOUNDATION, METAL (I)
-BREAK AWAY TRANSFORMER BASE, 9-INCH WITH
11 1/2" BOLT CIRCLE (I)
- FIXED POSITION CCTV CAMERA (I)
- (12) TERMINATE FIBER IN CABINET (I)
- (2) LED, 1-FACE, 1 SECTION, POST MOUNTED (I)
SIGN PANEL - TYPE 1
"RAMP METER AHEAD"
MUTCD W3-7 (I)
STA 1001+46, 33 LT

- 188 FT.
2 IN. CNC (I)
-(2) 1/C NO. 2 (I)
-1/C NO. 2 (GRN) (I)
-(2) 1/C NO. 8 [FLASHER] (I)
-1/C NO. 8 (GRN) (I)
-(2) 1/C NO. 8 [CAMERA] (I)
-1/C NO. 8 (GRN) (I)
1 1/4" IN. F.O. INNERDUCT (I)
-FOC 12SM (I)

- 34 FT.
2 IN. GSC (I)
-(2) 1/C NO. 2 (I)
-1/C NO. 2 (GRN) (I)

- 38 FT.
2 IN. CNC (I)
-(2) 4/C NO. 12, SIGNAL (I)

- STEEL MAST ARM ASSEMBLY AND POLE, 22 FT (I)
-CONCRETE FOUNDATION, TYPE E 30-INCH DIAMETER (I)
-SIGNAL HEAD, POLYCARBONATE, LED 1-FACE, 2-SECTION,
MAST ARM MOUNTED (I)
-SIGNAL HEAD, POLYCARBONATE, LED 1-FACE, 2-SECTION,
POST MOUNTED (I)
-WIRELESS REPEATER (I)
STA 1003+97, 23 LT
(SEE NOTE 1)

- LIGHT POLE (E)
-WIRELESS REPEATER (I)
-EXTERNAL ANTENNA (I)
(SEE NOTE 1)

- 57 FT.
2 IN. CNC (I)
-(2) 1/C NO. 2 (I)
-1/C NO. 2 (GRN) (I)

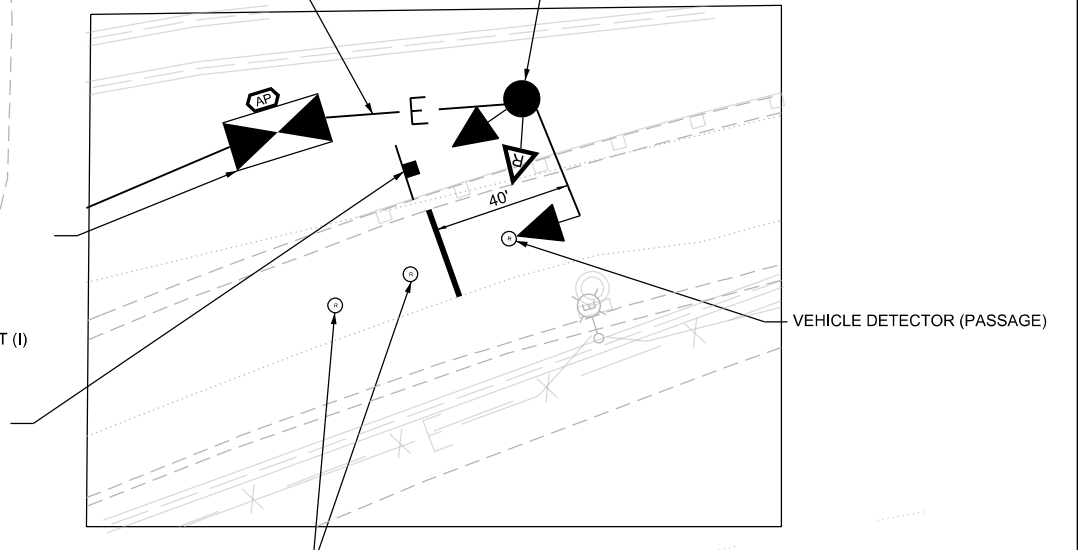
- RAMP METER CABINET (I)
-CONCRETE FOUNDATION, 334 (I)
-CONTROLLER, LINUX ATC (I)
-LAYER III (NETWORK) SWITCH (I)
-WIRELESS DETECTOR IN-CABINET
PROCESSOR MODULE (I)
-FIBER OPTIC INTERCONNECT CENTER, 48 PORT (I)
-(24) TERMINATE FIBER IN CABINET (I)
-WIRELESS RECEIVER & ANTENNA (I)
STA 1003+62, 31 LT

- METAL POST - TYPE B (I)
-SIGN PANEL - TYPE 1 "STOP HERE
ON RED" (MUTCD R10 - 6AR) (I)

- ELECTRIC METER PEDESTAL (I)
(PAID FOR AS ELECTRIC SERVICE INSTALLATION)

- 10 FT.
2 IN. GSC (I)
-(3) 1/C NO. 2 (I)

- ELECTRICAL SERVICE (R)
ELECTRIC SERVICE (I)



DETAIL A

(EXISTING AND REMOVED EQUIPMENT
NOT SHOWN FOR CLARITY)

REVISD SHEET 9/3/2024

RMP-02

Project: I194WB-RAMP; Location: I194 WB; Date: 8/16/2024; User: JAW; Title: RAMP; Scale: 1"=20'; Sheet: 2 of 15



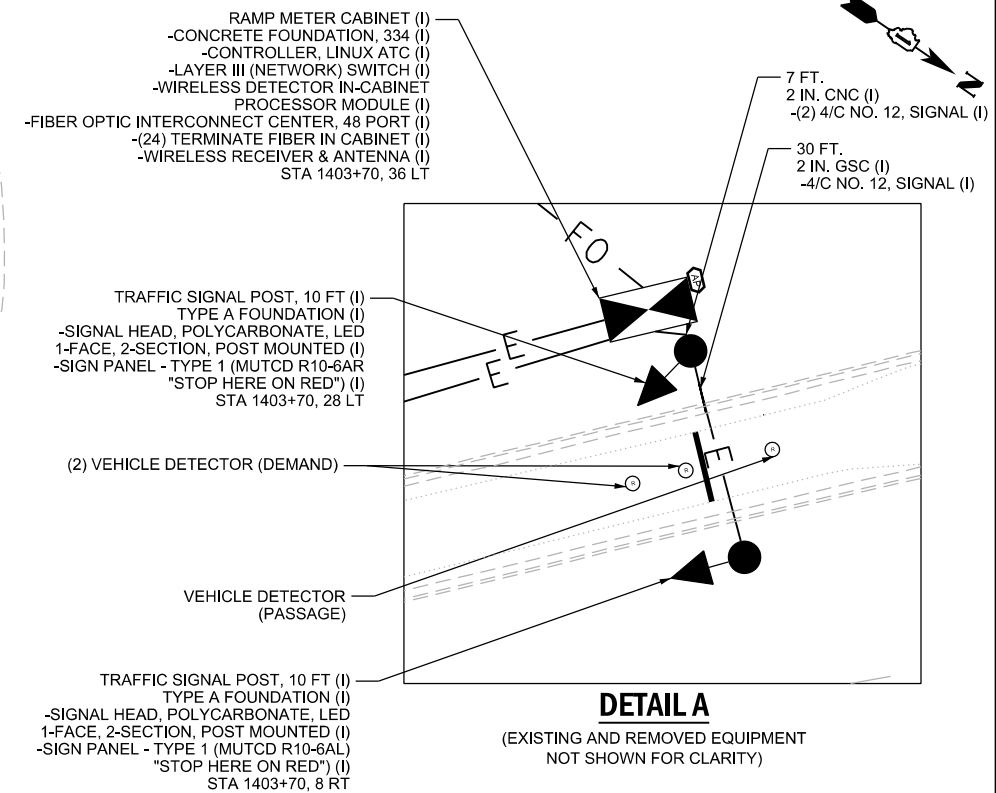
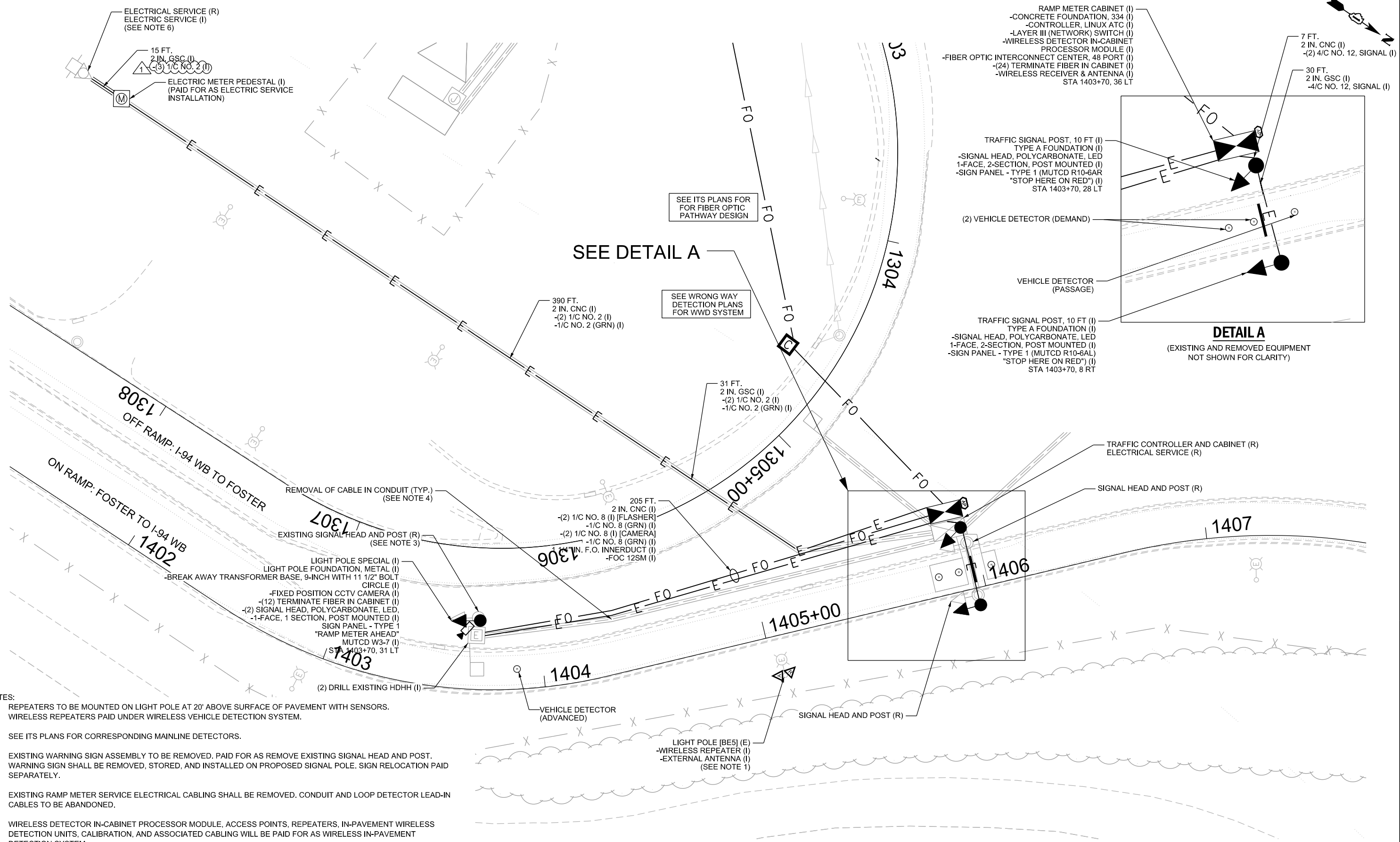
USER NAME = HOLMGRAL	DESIGNED - JS	REVISED - 8/23/2024
PLOT SCALE =	DRAWN - KK	REVISED -
PLOT DATE = 8/16/2024	CHECKED - JM	REVISED -
	DATE - 2/9/2024	REVISED -

STATE OF ILLINOIS
DEPARTMENT OF TRANSPORTATION

RAMP METER CONSTRUCTION PLANS
WILSON AVE TO WB I-94

SCALE: 1"=20' SHEET 2 OF 15 SHEETS STA. TO STA.

F.A.I. RTE.	SECTION	COUNTY	TOTAL SHEETS	SHEET NO.
94/41	FAP 0346 23 SIGN	COOK	208	95
				CONTRACT NO. 62V17
ILLINOIS FED. AID PROJECT				



SEE DETAIL A

SEE WRONG WAY DETECTION PLANS FOR WWD SYSTEM

- NOTES:**
1. REPEATERS TO BE MOUNTED ON LIGHT POLE AT 20' ABOVE SURFACE OF PAVEMENT WITH SENSORS. WIRELESS REPEATERS PAID UNDER WIRELESS VEHICLE DETECTION SYSTEM.
 2. SEE ITS PLANS FOR CORRESPONDING MAINLINE DETECTORS.
 3. EXISTING WARNING SIGN ASSEMBLY TO BE REMOVED. PAID FOR AS REMOVE EXISTING SIGNAL HEAD AND POST. WARNING SIGN SHALL BE REMOVED, STORED, AND INSTALLED ON PROPOSED SIGNAL POLE. SIGN RELOCATION PAID SEPARATELY.
 4. EXISTING RAMP METER SERVICE ELECTRICAL CABLING SHALL BE REMOVED. CONDUIT AND LOOP DETECTOR LEAD-IN CABLES TO BE ABANDONED.
 5. WIRELESS DETECTOR IN-CABINET PROCESSOR MODULE, ACCESS POINTS, REPEATERS, IN-PAVEMENT WIRELESS DETECTION UNITS, CALIBRATION, AND ASSOCIATED CABLING WILL BE PAID FOR AS WIRELESS IN-PAVEMENT DETECTION SYSTEM.
 6. ELECTRICAL SERVICE UTILIZED FOR RAMP 04 AND ACTIVE WRONG WAY DETECTION SYSTEM.
 7. FOR RAMP METER SINGLE LINE DIAGRAM SEE SHEETS PWR-01 AND PWR-02.



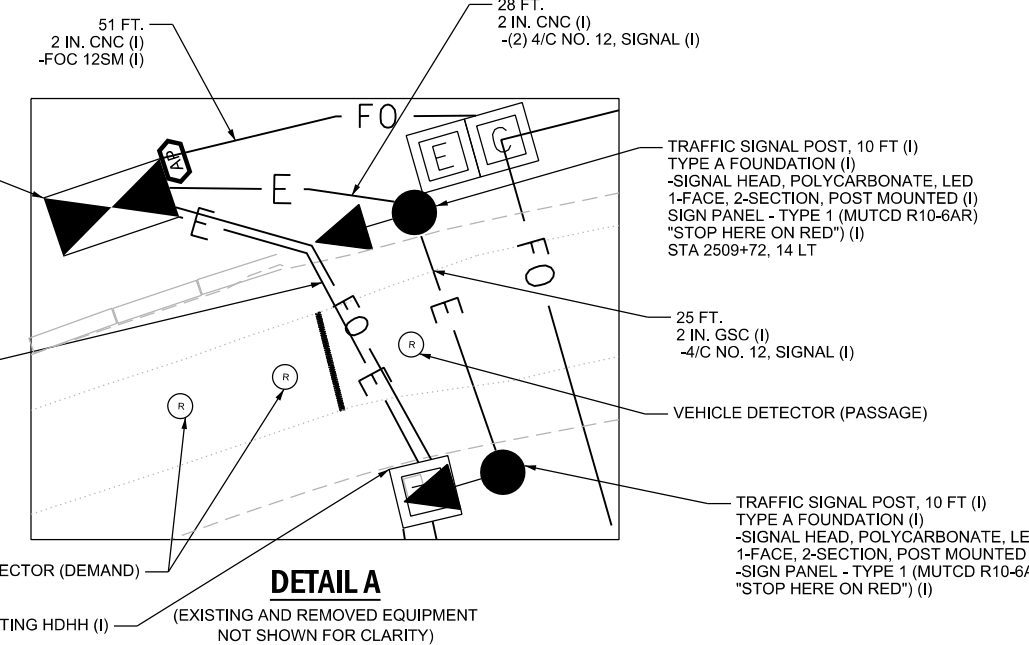
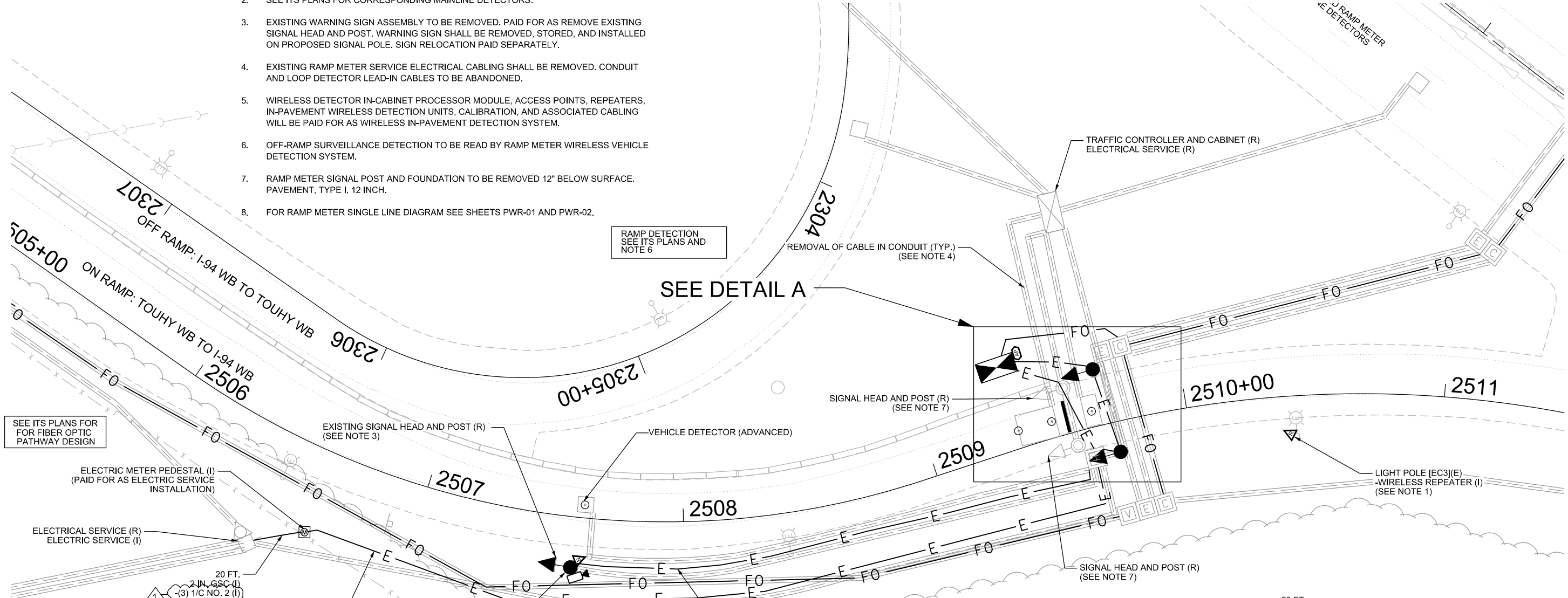
USER NAME = HOLMGRAL	DESIGNED - JS	REVISED - 8/23/2024
	DRAWN - KK	REVISED -
PLOT SCALE =	CHECKED - JM	REVISED -
PLOT DATE = 8/16/2024	DATE - 2/9/2024	REVISED -

STATE OF ILLINOIS
DEPARTMENT OF TRANSPORTATION

RAMP METER CONSTRUCTION PLANS FOSTER AVE TO WB I-94		
SCALE: 1" = 20'	SHEET 4 OF 15 SHEETS	STA. TO STA.

REVISED SHEET 9/3/2024		RMP-04	
F.A.I. RTE. 94/41	SECTION FAP 0346 23 SIGN	COUNTY COOK	TOTAL SHEETS 208
		SHEET NO. 97	
		CONTRACT NO. 62V17	
ILLINOIS FED. AID PROJECT			

- NOTES:
1. REPEATERS TO BE MOUNTED ON LIGHT POLE AT 20' ABOVE SURFACE OF PAVEMENT WITH SENSORS. WIRELESS REPEATERS PAID UNDER WIRELESS VEHICLE DETECTION SYSTEM.
 2. SEE ITS PLANS FOR CORRESPONDING MAINLINE DETECTORS.
 3. EXISTING WARNING SIGN ASSEMBLY TO BE REMOVED. PAID FOR AS REMOVE EXISTING SIGNAL HEAD AND POST. WARNING SIGN SHALL BE REMOVED, STORED, AND INSTALLED ON PROPOSED SIGNAL POLE. SIGN RELOCATION PAID SEPARATELY.
 4. EXISTING RAMP METER SERVICE ELECTRICAL CABLING SHALL BE REMOVED. CONDUIT AND LOOP DETECTOR LEAD-IN CABLES TO BE ABANDONED.
 5. WIRELESS DETECTOR IN-CABINET PROCESSOR MODULE, ACCESS POINTS, REPEATERS, IN-PAVEMENT WIRELESS DETECTION UNITS, CALIBRATION, AND ASSOCIATED CABLING WILL BE PAID FOR AS WIRELESS IN-PAVEMENT DETECTION SYSTEM.
 6. OFF-RAMP SURVEILLANCE DETECTION TO BE READ BY RAMP METER WIRELESS VEHICLE DETECTION SYSTEM.
 7. RAMP METER SIGNAL POST AND FOUNDATION TO BE REMOVED 12" BELOW SURFACE. PAVEMENT, TYPE I, 12 INCH.
 8. FOR RAMP METER SINGLE LINE DIAGRAM SEE SHEETS PWR-01 AND PWR-02.



- SEE ITS PLANS FOR FIBER OPTIC PATHWAY DESIGN
- ELECTRIC METER PEDESTAL (I) (PAID FOR AS ELECTRIC SERVICE INSTALLATION)
- ELECTRICAL SERVICE (R) ELECTRICAL SERVICE (I)
- 20 FT. 2 IN. GSC (I) (-3) 1/C NO. 2 (I)
- 334 FT. 2 IN. CNC (I) (-2) 1/C NO. 2 (I) [SERVICE] -1/C NO. 2 (GRN) (I)
- VEHICLE DETECTOR (ADVANCED)
- EXISTING SIGNAL HEAD AND POST (R) (SEE NOTE 3)
- VEHICLE DETECTOR (PASSAGE)
- VEHICLE DETECTOR (DEMAND)
- TRAFFIC SIGNAL POST, 10 FT (I) TYPE A FOUNDATION (I) -SIGNAL HEAD, POLYCARBONATE, LED 1-FACE, 2-SECTION, POST MOUNTED (I) SIGN PANEL - TYPE 1 (MUTCD R10-6AR) "STOP HERE ON RED" (I) STA 2509+72, 14 LT
- 25 FT. 2 IN. GSC (I) -4/C NO. 12, SIGNAL (I)
- VEHICLE DETECTOR (PASSAGE)
- TRAFFIC SIGNAL POST, 10 FT (I) TYPE A FOUNDATION (I) -SIGNAL HEAD, POLYCARBONATE, LED 1-FACE, 2-SECTION, POST MOUNTED (I) -SIGN PANEL - TYPE 1 (MUTCD R10-6AL "STOP HERE ON RED") (I)
- 206 FT. 2 IN. CNC (I) (-2) 1/C NO. 8 [FLASHER] (I) -1/C NO. 8 (GRN) (I) (-2) 1/C NO. 8 [CAMERA] (I) -1/C NO. 8 (GRN) (I) 1 1/4" IN. F.O. INNERDUCT (I) -FOC 12SM (I)
- 45 FT. 2 IN. GSC (I) (-2) 1/C NO. 2 (I) [SERVICE] -1/C NO. 2 (GRN) (I) (-2) 1/C NO. 8 (I) [FLASHER] -1/C NO. 8 (GRN) (I) (-2) 1/C NO. 8 (I) [CAMERA] -1/C NO. 8 (GRN) (I) 2 IN. GSC (I) 2 IN. GSC (I) 1 1/4" IN. F.O. INNERDUCT (I) -FOC 12SM (I)
- (2) VEHICLE DETECTOR (DEMAND)
- (2) DRILL EXISTING HDHH (I)
- EXISTING AND REMOVED EQUIPMENT NOT SHOWN FOR CLARITY
- LIGHT POLE SPECIAL (I)
LIGHT POLE FOUNDATION, METAL (I)
-BREAK AWAY TRANSFORMER BASE, 9-INCH WITH 1 1/2" BOLT CIRCLE (I)
-FIXED POSITION CCTV CAMERA (I)
-(12) TERMINATE FIBER OPTIC IN CABINET (I)
-(2) LED, 1-FACE, 1 SECTION, POST MOUNTED (I)
- SIGN PANEL - TYPE 1 "RAMP METER AHEAD" MUTCD W3-7 (I)
WIRELESS REPEATER (I) (SEE NOTE 1)
STA 2507+58, 20 RT

RAMP DETECTION SEE ITS PLANS AND NOTE 6

SEE DETAIL A

DETAIL A

REVISED SHEET 9/3/2024

RMP-08

I:\Projects\Illinois\2024\24000100\24000100-008_016217-1-ramp-rmp.dgn
 Project: I:\Projects\Illinois\2024\24000100\24000100-008_016217-1-ramp-rmp.dgn
 User: JAW
 Date: 8/16/2024



USER NAME = HOLMGRAL	DESIGNED - JS	REVISED - 8/23/2024
DRAWN - KK	CHECKED - JM	REVISED -
PLOT SCALE =	DATE - 2/9/2024	REVISED -
PLOT DATE = 8/16/2024		

STATE OF ILLINOIS
DEPARTMENT OF TRANSPORTATION

RAMP METER CONSTRUCTION PLANS
WB TOUHY AVE TO WB I-94

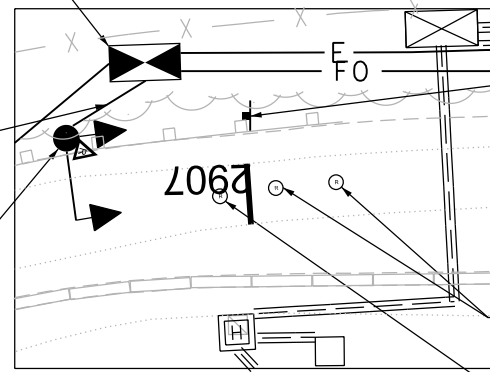
SCALE: 1" = 20'
SHEET 8 OF 15 SHEETS
STA. TO STA.

F.A.I. RTE.	SECTION	COUNTY	TOTAL SHEETS	SHEET NO.
94/41	FAP 0346 23 SIGN	COOK	208	101
CONTRACT NO. 62V17			ILLINOIS FED. AID PROJECT	

- RAMP METER CABINET (I)
- CONCRETE FOUNDATION, 334 (I)
- CONTROLLER, LINUX ATC (I)
- LAYER III (NETWORK) SWITCH (I)
- WIRELESS DETECTOR IN-CABINET PROCESSOR MODULE (I)
- FIBER OPTIC INTERCONNECT CENTER, 48 PORT (I)
- (24) TERMINATE FIBER IN CABINET (I)
- WIRELESS RECEIVER & ANTENNA (I)
- STA 2907+22, 21 RT

- 19 FT. 2 IN. CNC (I)
- (2) 4/C NO. 12, SIGNAL (I)

- STEEL MAST ARM ASSEMBLY AND POLE, 22 FT (I)
- CONCRETE FOUNDATION, TYPE E 30-INCH DIAMETER (I)
- SIGNAL HEAD, POLYCARBONATE, LED 1-FACE, 2-SECTION, MAST ARM MOUNTED (I)
- SIGNAL HEAD, POLYCARBONATE, LED 1-FACE, 2-SECTION, POST MOUNTED (I)
- WIRELESS REPEATER (I)



DETAIL A

(EXISTING AND REMOVED EQUIPMENT NOT SHOWN FOR CLARITY)

- METAL POST - TYPE B (I)
- SIGN PANEL - TYPE 1 "STOP HERE ON RED" (MUTCD R10 - 6AL) (I)

- (2) VEHICLE DETECTOR (DEMAND)

- VEHICLE DETECTOR (PASSAGE)

- 227 FT. 2 IN. CNC (I)
- (2) 1/C NO. 2 (I)
- 1/C NO. 2 (GRN) (I)
- (2) 1/C NO. 8 (I) [FLASHER]
- 1/C NO. 8 (GRN) (I)
- (2) 1/C NO. 8 (I) [CAMERA]
- 1/C NO. 8 (GRN) (I)
- 1 1/4" IN. F.O. INNERDUCT (I)
- FOC 12SM (I)

REMOVAL OF CABLE IN CONDUIT (TYP.) (SEE NOTE 4)

- ELECTRIC METER PEDESTAL (I)
- (PAID FOR AS ELECTRIC SERVICE INSTALLATION)

- 40 FT. 2 IN. CNC (I) [POWER]
- (3) 1/C NO. 2 (I)

- ELECTRICAL SERVICE (R)
- ELECTRIC SERVICE (I)
- (SEE NOTE 7)

- 168 FT. 2 IN. CNC (I) [POWER]
- (2) 1/C NO. 2 (I)
- 1/C NO. 2 (GRN) (I)

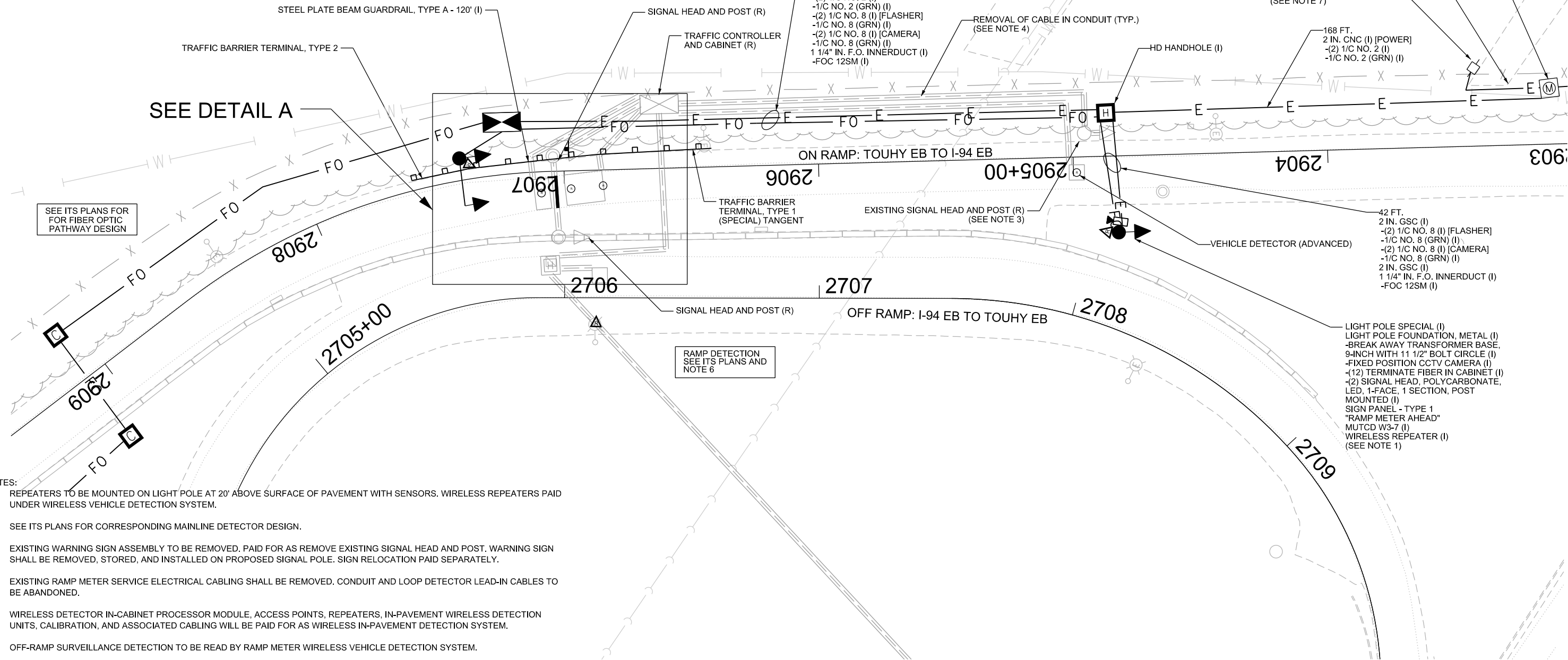
- HD HANDHOLE (I)

- 42 FT. 2 IN. GSC (I)
- (2) 1/C NO. 8 (I) [FLASHER]
- 1/C NO. 8 (GRN) (I)
- (2) 1/C NO. 8 (I) [CAMERA]
- 1/C NO. 8 (GRN) (I)
- 2 IN. GSC (I)
- 1 1/4" IN. F.O. INNERDUCT (I)
- FOC 12SM (I)

- LIGHT POLE SPECIAL (I)
- LIGHT POLE FOUNDATION, METAL (I)
- BREAK AWAY TRANSFORMER BASE, 9-INCH WITH 11 1/2" BOLT CIRCLE (I)
- FIXED POSITION CCTV CAMERA (I)
- (12) TERMINATE FIBER IN CABINET (I)
- (2) SIGNAL HEAD, POLYCARBONATE, LED, 1-FACE, 1 SECTION, POST MOUNTED (I)
- SIGN PANEL - TYPE 1 "RAMP METER AHEAD" MUTCD W3-7 (I)
- WIRELESS REPEATER (I)
- (SEE NOTE 1)

SEE DETAIL A

SEE ITS PLANS FOR FIBER OPTIC PATHWAY DESIGN



NOTES:

- REPEATERS TO BE MOUNTED ON LIGHT POLE AT 20' ABOVE SURFACE OF PAVEMENT WITH SENSORS. WIRELESS REPEATERS PAID UNDER WIRELESS VEHICLE DETECTION SYSTEM.
- SEE ITS PLANS FOR CORRESPONDING MAINLINE DETECTOR DESIGN.
- EXISTING WARNING SIGN ASSEMBLY TO BE REMOVED. PAID FOR AS REMOVE EXISTING SIGNAL HEAD AND POST. WARNING SIGN SHALL BE REMOVED, STORED, AND INSTALLED ON PROPOSED SIGNAL POLE. SIGN RELOCATION PAID SEPARATELY.
- EXISTING RAMP METER SERVICE ELECTRICAL CABLING SHALL BE REMOVED. CONDUIT AND LOOP DETECTOR LEAD-IN CABLES TO BE ABANDONED.
- WIRELESS DETECTOR IN-CABINET PROCESSOR MODULE, ACCESS POINTS, REPEATERS, IN-PAVEMENT WIRELESS DETECTION UNITS, CALIBRATION, AND ASSOCIATED CABLING WILL BE PAID FOR AS WIRELESS IN-PAVEMENT DETECTION SYSTEM.
- OFF-RAMP SURVEILLANCE DETECTION TO BE READ BY RAMP METER WIRELESS VEHICLE DETECTION SYSTEM.
- SERVICE USED FOR BOTH RAMP 09 AND RAMP 11. ELECTRICAL SERVICE INSTALLATION INCLUDES REPLACEMENT OF THE ELECTRICAL SERVICE PEDESTAL AND METER.
- FOR RAMP METER SINGLE LINE DIAGRAM SEE SHEETS PWR-01 AND PWR-02.

REVISION SYMBOL: REVISED SHEET 9/3/2024

RMP-11



USER NAME = HOLMGRAL	DESIGNED - JS	REVISED - 8/23/2024
PLOT SCALE =	DRAWN - KK	REVISED -
PLOT DATE = 8/16/2024	CHECKED - JM	REVISED -
	DATE - 2/9/2024	REVISED -

STATE OF ILLINOIS
DEPARTMENT OF TRANSPORTATION

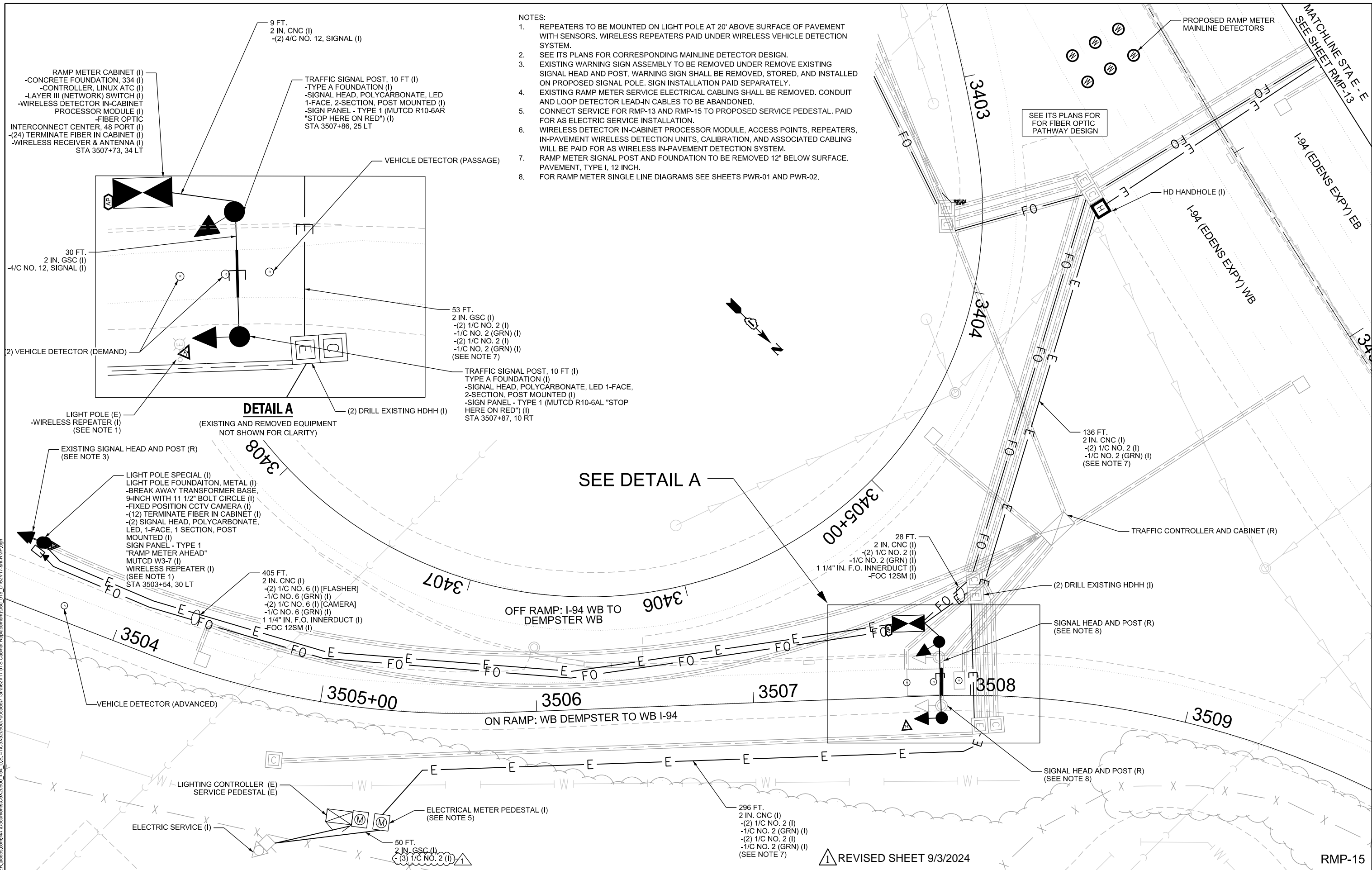
RAMP METER CONSTRUCTION PLANS
EB TOUHY AVE TO EB I-94

SCALE: 1" = 20'

SHEET 11 OF 15 SHEETS STA. TO STA.

F.A.I. RTE.	SECTION	COUNTY	TOTAL SHEETS	SHEET NO.
94/41	FAP 0346 23 SIGN	COOK	208	104
CONTRACT NO. 62V17			ILLINOIS FED. AID PROJECT	

Project: I-94 EB Ramp Meter Construction; Location: I-94 EB, Touhy Ave; Stationing: 2903+00 to 2709+00; Date: 8/16/2024; Scale: 1" = 20'; Sheet: 11 of 15; Contract: 62V17



- NOTES:
1. REPEATERS TO BE MOUNTED ON LIGHT POLE AT 20' ABOVE SURFACE OF PAVEMENT WITH SENSORS. WIRELESS REPEATERS PAID UNDER WIRELESS VEHICLE DETECTION SYSTEM.
 2. SEE ITS PLANS FOR CORRESPONDING MAINLINE DETECTOR DESIGN.
 3. EXISTING WARNING SIGN ASSEMBLY TO BE REMOVED UNDER REMOVE EXISTING SIGNAL HEAD AND POST. WARNING SIGN SHALL BE REMOVED, STORED, AND INSTALLED ON PROPOSED SIGNAL POLE. SIGN INSTALLATION PAID SEPARATELY.
 4. EXISTING RAMP METER SERVICE ELECTRICAL CABLING SHALL BE REMOVED. CONDUIT AND LOOP DETECTOR LEAD-IN CABLES TO BE ABANDONED.
 5. CONNECT SERVICE FOR RMP-13 AND RMP-15 TO PROPOSED SERVICE PEDESTAL. PAID FOR AS ELECTRIC SERVICE INSTALLATION.
 6. WIRELESS DETECTOR IN-CABINET PROCESSOR MODULE, ACCESS POINTS, REPEATERS, IN-PAVEMENT WIRELESS DETECTION UNITS, CALIBRATION, AND ASSOCIATED CABLING WILL BE PAID FOR AS WIRELESS IN-PAVEMENT DETECTION SYSTEM.
 7. RAMP METER SIGNAL POST AND FOUNDATION TO BE REMOVED 12" BELOW SURFACE. PAVEMENT, TYPE I, 12 INCH.
 8. FOR RAMP METER SINGLE LINE DIAGRAMS SEE SHEETS PWR-01 AND PWR-02.

DETAIL A

(EXISTING AND REMOVED EQUIPMENT NOT SHOWN FOR CLARITY)

SEE DETAIL A

REVISIED SHEET 9/3/2024



USER NAME = HOLMGRAL	DESIGNED - JS	REVISED - 8/23/2024
PLOT SCALE =	DRAWN - KK	REVISED -
PLOT DATE = 8/16/2024	CHECKED - JM	REVISED -
	DATE - 2/9/2024	REVISED -

STATE OF ILLINOIS
DEPARTMENT OF TRANSPORTATION

**RAMP METER CONSTRUCTION PLANS
WB DEMPSTER TO WB I-94**

SCALE: 1"=20' SHEET 15 OF 15 SHEETS STA. TO STA.

F.A.I. RTE.	SECTION	COUNTY	TOTAL SHEETS	SHEET NO.
94/41	FAP 0346 23 SIGN	COOK	208	108
				CONTRACT NO. 62V17
				ILLINOIS FED. AID PROJECT

RMP-15

