

STATE OF ILLINOIS
DEPARTMENT OF TRANSPORTATION

F.A. RT.C.	SECTION	COUNTY	TOTAL SHEETS	SHEET NO.
VAR	2024-986-DTR	VARIOUS	9	1
		ILLINOIS	CONTRACT NO. 62X07	

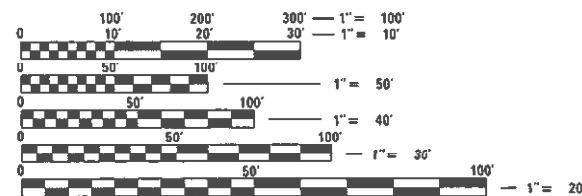
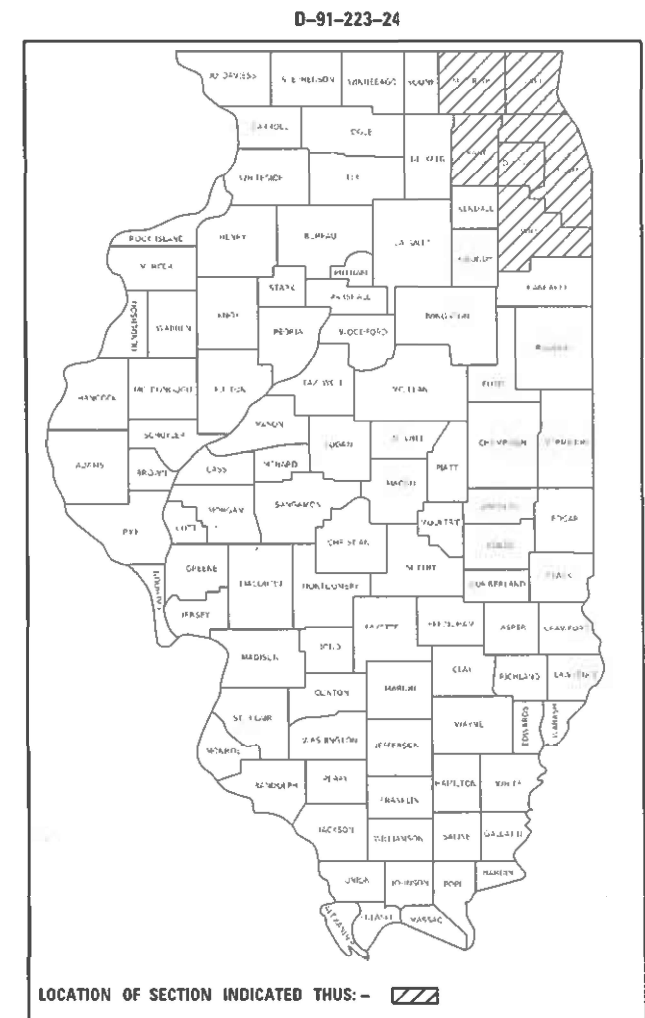
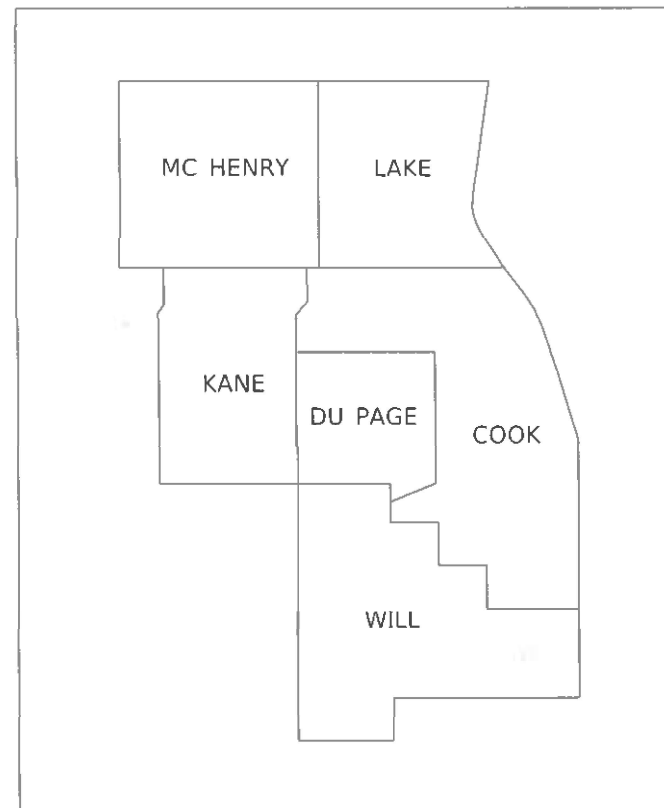
FOR INDEX OF SHEETS, SEE SHEET NO. 2

IMPROVEMENTS ARE AT VARIOUS LOCATIONS
WITHIN DISTRICT ONE

PROPOSED
HIGHWAY PLANS

ROUTE: VARIOUS
SECTION 2024-986-DTR
PROJECT N/A
DEAD TREE REMOVAL
VARIOUS COUNTIES

C-91-287-24



FULL SIZE PLANS HAVE BEEN PREPARED USING STANDARD ENGINEERING SCALES. REDUCED SIZED PLANS WILL NOT CONFORM TO STANDARD SCALES. IN MAKING MEASUREMENTS ON REDUCED PLANS, THE ABOVE SCALES MAY BE USED.

J.U.L.I.E.
JOINT UTILITY LOCATION INFORMATION FOR EXCAVATORS
1-800-892-0123
OR 811

PROJECT ENGINEER JACEK EJMONT
PROJECT MANAGER GIOVANNA ZAFFINA (847) 705-4171

CONTRACT NO. 62X07

GROSS LENGTH = x.xx FT. = x.xxx MILE
NET LENGTH = x.xx FT. = x.xxx MILE

STATE OF ILLINOIS
DEPARTMENT OF TRANSPORTATION

SUBMITTED *July 8th 2024*

[Signature]
REGIONAL ENGINEER

August 16, 2024

[Signature]
ENGINEER OF DESIGN AND ENVIRONMENT

August 16, 2024

[Signature]
DIRECTOR OF HIGHWAYS PROJECT IMPLEMENTATION

PRINTED BY THE AUTHORITY
OF THE STATE OF ILLINOIS

INDEX OF SHEETS

SHEET NO.	DESCRIPTION
1	COVER SHEET
2	INDEX OF SHEETS, HIGHWAY STANDARDS, GENERAL NOTES
3	SUMMARY OF QUANTITIES
4	LOCATION AND WORK SCHEDULE
5	SAMPLE WORK ORDERS
6	STUMP DETAILS
7	PRUNING FOR SAFETY AND EQUIPMENT CLEARANCE
8	TRAFFIC CONTROL AND PROTECTION FOR SIDE ROADS, INTERSECTIONS, & DRIVEWAYS (TC-10)
9	TRAFFIC CONTROL DETAIL FOR FREEWAY SHOULDER CLOSURES AND PARTIAL RAMP CLOSURE (TC-17)

HIGHWAY STANDARDS

STANDARD NO.	DESCRIPTION
701001-02	OFF-ROAD OPERATIONS, 2L, 2W, MORE THAN 15' AWAY
701101	OFF-RD OPERATIONS, MULTILANE, 15' TO 24" FROM PAVEMENT EDGE
701006-05	OFF-ROAD OPERATIONS, 2L, 2W, 15' TO 24" FROM PAVEMENT
701106-02	OFF-ROAD OPERATIONS, MORE THAN 15' AWAY
701201-05	LANE CLOSURE, 2L, 2W, DAY ONLY, FOR SPEEDS \geq 45 MPH
701301-04	LANE CLOSURE, 2L, 2W, SHORT TIME OPERATIONS
701311-03	LANE CLOSURE 2L, 2W MOVING OPERATIONS - DAY ONLY
701421-08	LANE CLOSURE, MULTILANE, DAY OPERATION ONLY, FOR SPEEDS \geq 45 MPH TO 55 MPH
701422-10	LANE CLOSURE, MULTILANE, FOR SPEEDS \geq 45 MPH TO 55 MPH
701426	LANE CLOSURE, MULTILANE, INTERMITTENT OR MOVING OPERATIONS, FOR SPEEDS \geq 45 MPH
701427-05	LANE CLOSURE, MULTILANE, INTERMITTENT OR MOVING OPERATIONS, FOR SPEEDS \leq 40 MPH
701501-06	URBAN LANE CLOSURE, 2L, 2W, UNDIVIDED
701502-09	URBAN LANE CLOSURE, 2L, 2W, BI-DIRECTIONAL LEFT TURN LANE
701601-09	URBAN LANE CLOSURE, MULTILANE, 1W OR 2W WITH NON-TRAVERSABLE MEDIAN
701602	URBAN LANE CLOSURE, MULTILANE, 2W WITH BIDIRECTIONAL LEFT TURN LANE
701606-10	URBAN SINGLE LANE CLOSURE, MULTILANE, 2W WITH MOUNTABLE MEDIAN
701611-01	URBAN HALF CLOSURE, MULTILANE, 2W WITH MOUNTABLE MEDIAN
701701-10	URBAN LANE CLOSURE, MULTILANE INTERSECTION
701801-06	SIDEWALK, CORNER OR CROSSWALK CLOSURE
701901-09	TRAFFIC CONTROL DEVICES

GENERAL NOTES

- BEFORE STARTING ANY EXCAVATION, THE CONTRACTOR SHALL CALL "I.U.L.I.E." AT (800) 892-0123 OR 811 FOR FIELD LOCATIONS OF BURIED ELECTRIC, TELEPHONE AND GAS UTILITIES. (48 HOUR NOTIFICATION IS REQUIRED).
- THE CONTRACTOR WILL NOT BE ALLOWED TO SET UP A YARD OR FIELD OFFICE ON STATE PROPERTY WITHOUT WRITTEN PERMISSION FROM THE DEPARTMENT.
- IT SHALL BE THE CONTRACTOR'S RESPONSIBILITY TO VERIFY ALL CONDITIONS EXISTING IN THE FIELD PRIOR TO STARTING WORK ORDERS.
- THE CONTRACTOR SHALL CONTACT KALPANA KANNAN-HOSADURGA, DISTRICT ONE TRAFFIC CONTROL SUPERVISOR AT KALPANA.KANNAN-HOSADURGA@ILLINOIS.GOV A MINIMUM OF 72 HOURS IN ADVANCE OF BEGINNING WORK.
- THE CONTRACTOR SHALL REQUEST AND GAIN APPROVAL FROM THE ILLINOIS DEPARTMENT OF TRANSPORTATION'S EXPRESSWAY TRAFFIC OPERATIONS ENGINEER AT WWW.IDOTLCS.COM TWENTY-FOUR (24) HOURS IN ADVANCE OF ALL DAILY LANE, RAMP AND SHOULDER CLOSURES AND 7 DAYS IN ADVANCE OF ALL PERMANENT AND WEEKEND CLOSURES AND 7 DAYS IN ADVANCE OF ALL PERMANENT AND WEEKEND CLOSURES ON ALL FREEWAYS AND/OR EXPRESSWAYS IN DISTRICT ONE. THIS ADVANCE NOTIFICATION IS CALCULATED BASED ON WORKWEEK OF MONDAY THROUGH FRIDAY AND SHALL NOT INCLUDE WEEKENDS OR HOLIDAYS.
- THE CONTRACTOR SHALL BE REQUIRED TO PROVIDE ACCESS TO ABUTTING PROPERTY AT ALL TIMES DURING THE CONSTRUCTION OF THIS PROJECT.
- THE CONTRACTOR SHALL USE CARE IN TREE REMOVAL OPERATIONS NEAR ANY AND ALL EXISTING ITEMS THAT WILL NOT BE REMOVED. ANY DAMAGE DONE TO EXISTING ITEMS BY THE CONTRACTOR SHALL BE REPAIRED AT THE CONTRACTOR'S OWN EXPENSE TO THE SATISFACTION OF THE ENGINEER.
- THE CONTRACTOR SHALL MAINTAIN PEDESTRIAN ACCESS AT ALL TIMES DURING CONSTRUCTION.
- THE CONSTRUCTION LIMITS WILL BE STAKED AND APPROVED BY THE ENGINEER PRIOR TO COMMENCING CONSTRUCTION. THE CONSTRUCTION LIMITS MAY BE ADJUSTED BY THE ENGINEER TO PRESERVE TREES AND NO ADDITIONAL COMPENSATION WILL BE PAID TO THE CONTRACTOR FOR CHANGES IN CONSTRUCTION LIMITS.
- DURING CONSTRUCTION OPERATIONS, WHEN ANY LOOSE MATERIAL IS DEPOSITED IN THE FLOW LINE OF DITCHES, GUTTERS, OR DRAINAGE STRUCTURES SO THAT THE NATURAL FLOW OF WATER IS OBSTRUCTED, THE MATERIAL SHALL BE REMOVED AT THE CLOSE OF EACH WORKING DAY. THIS WORK IS CONSIDERED AS PART OF CLEAN-UP.
- TO AVOID IMPACTS TO THE STATE AND FEDERALLY-THREATENED NORTHERN LONG-EARED BAT (MYOTIS SEPTENTRIONALIS) AND ITS HABITAT, CLEARING OF POTENTIAL HABITAT TREES SHALL NOT BE PERMITTED FROM APRIL 1ST THROUGH OCTOBER 31ST. THE ENGINEER SHALL HAVE THE FINAL DETERMINATION OF TREE REMOVAL.
- THE CONTRACTOR SHALL ADHERE TO ARTICLE 107.23 OF THE CURRENT IDOT STANDARD SPECIFICATIONS BOOK.
- WHEN HERBICIDE WORK IS SPECIFIED AND AUTHORIZED, THE CONTRACTOR SHALL HAVE A LICENSED APPLICATOR ON THE WORK SITE TO PERFORM SAID WORK UNDER THE DIRECT SUPERVISION OF THE RESIDENT ENGINEER.
- TREE REMOVAL PLANS WILL BE GIVEN AT THE PRECONSTRUCTION MEETING.

MODEL: Default
 FILE: \\nrc-pxw-bentley.com:PWIDOT\Documents\DOT Offices\District 1\Projects\ID122324\CADD\InfoStructures\ID122324-shr-genrate.dgn

USER NAME = melissa.delrosario	DESIGNED -	REVISED -
	DRAWN -	REVISED -
PLOT SCALE = 100.0341' / in.	CHECKED -	REVISED -
PLOT DATE = 7/6/2024	DATE -	REVISED -

STATE OF ILLINOIS
DEPARTMENT OF TRANSPORTATION

DEAD TREE REMOVAL
INDEX OF SHEETS, STATE STANDARDS, & GENERAL NOTES

SCALE: SHEET OF SHEETS STA. TO STA.

F.A. RTE.	SECTION	COUNTY	TOTAL SHEETS	SHEET NO.
VAR	2024-986-DTR	VARIOUS	9	2
ILLINOIS FED. AID PROJECT			CONTRACT NO. 62X07	

SUMMARY OF QUANTITIES			TOTAL QUANTITIES	100% STATE 0031	CONSTRUCTION TYPE CODE				
CODE NO	ITEM	UNIT							
20100110	TREE REMOVAL (6 TO 15 UNITS DIAMETER)	UNIT	1667	1667					
20100210	TREE REMOVAL (OVER 15 UNITS DIAMETER)	UNIT	1274	1274					
20101300	TREE PRUNING (1 TO 10 INCH DIAMETER)	EACH	5	5					
20101350	TREE PRUNING (OVER 10 INCH DIAMETER)	EACH	22	22					
67100100	MOBILIZATION	L SUM	1	1					
X2010100	TREE LIMB REMOVAL (4 TO 10 INCHES DIAMETER)	EACH	71	71					
X2010101	TREE LIMB REMOVAL (4 TO 10 INCHES DIAMETER), EXPEDITED	EACH	1	1					
X2010106	TREE REMOVAL (UNDER 6 UNITS DIAMETER)	UNIT	375	375					
X2010110	TREE REMOVAL (6 TO 15 UNITS DIAMETER) EXPEDITED	UNIT	225	225					
X2010200	TREE LIMB REMOVAL (OVER 10 INCHES DIAMETER)	EACH	26	26					
X2010201	TREE LIMB REMOVAL (OVER 10 INCHES DIAMETER), EXPEDITED	EACH	6	6					
X2010210	TREE REMOVAL (OVER 15 UNITS DIAMETER), EXPEDITED	UNIT	200	200					

SUMMARY OF QUANTITIES			TOTAL QUANTITIES	100% STATE 0031	CONSTRUCTION TYPE CODE				
CODE NO	ITEM	UNIT							
X2010305	TREE PRUNING (SPECIAL)	UNIT	50	50					
X2010310	TREE REMOVAL (SPECIAL)	UNIT	5	5					
X2010350	TREE REMOVAL, ACRES (SPECIAL)	ACRE	5	5					
X2010400	STUMP REMOVAL ONLY	UNIT	130	130					
X2010514	SELECTIVE CLEARING	ACRE	0.5	0.5					
X2010516	SELECTIVE CLEARING	UNIT	112	112					
X2011300	TREE PRUNING (1 TO 10 INCH DIAMETER), EXPEDITED	EACH	1	1					
X2011350	TREE PRUNING (OVER 10 INCH DIAMETER), EXPEDITED	EACH	1	1					
X2100002	PRUNING FOR SAFETY AND EQUIPMENT CLEARANCE	UNIT	180	180					

FILE NAME =	USER NAME = mellissadeirosario	DESIGNED -	REVISED -
pw:\nid\pw-bentley.com\PI\DOT\Documents\VDOT	Office\District\Projects\DI22324\CADData\Structures\DI22324-	HRUN	REVISED -
	PLOT SCALE = 100.0480' / 1" =	CHECKED -	REVISED -
	PLOT DATE = 7/9/2024	DATE -	REVISED -

**STATE OF ILLINOIS
DEPARTMENT OF TRANSPORTATION**

**DEAD TREE REMOVAL
SUMMARY OF QUANTITIES**

SCALE: SHEET NO. OF SHEETS STA. TO STA.

F.A. RTE.	SECTION	COUNTY	TOTAL SHEETS	SHEET NO.
VAR	2024-986-DTR	VARIOUS	9	3
FED. ROAD DIST. NO. 1 ILLINOIS FED. AID PROJECT			CONTRACT NO. 62X07	

DESCRIPTION	UNIT OF MEASUREMENT	TOTAL CONTRACT QUANTITY	LOCATIONS									
			SOUTH COOK					NORTH COOK			KANE	WILL
			I-55 N Frontage Road: Ashland to Damen, (Chicago)	95th St: Kean Avenue to Archer Avenue (Hickory Hills)	123rd St.: 80th Avenue to 104th Avenue (Palos Park)	147th St.: Linder Avenue to LaVergne Avenue (Midlothian)	I-94: Wentworth Avenue to Cottage Grove Avenue (Chicago)	ILL 59: Dundee to Barrington Road (Barrington Hills)	ILL 68: ILL 59 to Lakeview Lane (Barrington Hills)	Palatine Road: Elia Road to Roselle Road (Inverness)	ILL 25: I-88 to Laurel (North Aurora)	ILL 102: Hintze Road to Elevator Road (Wilmington)
TREE REMOVAL (6 TO 15 UNITS DIAMETER)	UNIT	1667	38.8	56.9		98.6	190.5	104.5		29.6		47.6
TREE REMOVAL (6 TO 15 UNITS DIAMETER), EXPEDITED	UNIT	225										
TREE REMOVAL (OVER 15 UNITS DIAMETER)	UNIT	1274		46.9		16.1		99.7	18.2	44.3		48.4
TREE REMOVAL (OVER 15 UNITS DIAMETER), EXPEDITED	UNIT	200										
TREE REMOVAL (UNDER 6 UNITS DIAMETER)	UNIT	375		40.1		18.1	47.2	137.1	17.2	14.7		
TREE REMOVAL (SPECIAL)	UNIT	5										
TREE REMOVAL, ACRES (SPECIAL)	ACRE	5	0.46		0.32		1.33					2.22
SELECTIVE CLEARING	ACRE	0.5										
SELECTIVE CLEARING	UNIT	112		31.88		3.66	5.48	14.3	5.42	14.87	16.75	9.2
TREE LIMB REMOVAL (4 TO 10 INCHES DIAMETER)	EACH	71		17		1	3	17	8	9		6
TREE LIMB REMOVAL (4 TO INCHES DIAMETER), EXPEDITED	EACH	1										
TREE LIMB REMOVAL (OVER 10 INCHES DIAMETER)	EACH	26		2			2	5		1		1
TREE LIMB REMOVAL (OVER 10 INCHES DIAMETER), EXPEDITED	EACH	6										
STUMP REMOVAL ONLY	UNIT	130										
TREE PRUNING (1 TO 10 INCH DIAMETER)	EACH	5		1			1			3		
TREE PRUNING (OVER 10 INCH DIAMETER)	EACH	22					4		1	2	5	1
TREE PRUNING (1 TO 10 INCH DIAMETER), EXPEDITED	EACH	1										
TREE PRUNING (OVER 10 INCH DIAMETER), EXPEDITED	EACH	1										
TREE PRUNING (SPECIAL)	UNIT	50										
PRUNING FOR SAFETY AND EQUIPMENT CLEARANCE	UNIT	180		36.7	20.6	17.98	3.88	25.26	0.82	16.93	27.61	12.8

NOTE: THE SPECIFIED QUANTITIES FOR EACH LOCATION ARE ESTIMATED. PAYMENT WILL BE MADE ONLY FOR ACTUAL QUANTITIES MEASURED AND ACCEPTED AS SATISFACTORY BY THE ENGINEER.

MODEL - Default
FILE - Model.ctb
PLOT DATE = 7/8/2024
PLOT SCALE = 100.0401' / in.
DRAWN -
CHECKED -
DATE -

USER NAME = melissa.delrosario	DESIGNED -	REVISED -
	DRAWN -	REVISED -
	CHECKED -	REVISED -
	DATE -	REVISED -

**STATE OF ILLINOIS
DEPARTMENT OF TRANSPORTATION**

**DEAD TREE REMOVAL
LOCATION AND WORK SCHEDULE**

SCALE: SHEET OF SHEETS STA. TO STA.

F.A. RTE.	SECTION	COUNTY	TOTAL SHEETS	SHEET NO.
VAR	2024-986-DTR	VARIOUS	9	4
ILLINOIS FED. AID PROJECT			CONTRACT NO. 62X07	



CONTRACT 62X07

WORK ORDER NUMBER:

Field Work By:
Prepared By:

Standard - 30 Day
Completion Date

PAGE: of

Cook DuPage Kane
Lake McHenry Will

Team Section

Expedited - 48 hour

Marked Route: Municipality: Side of Road:
Location:

Table with columns: TREE #, LIMB REMOVAL, TREE REMOVAL, TREE PRUNING, SHEET TOTAL, GRAND TOTAL. Includes a large 'SAMPLE' watermark.

Special Instructions:
Reason for Removal:

Authorization of Work, Certification of Completed Work, Office Use Only, Inspection and Acceptance of Completed Work. Includes signature lines for IDOT Resident Engineer/Technician, Contractor, and Inspector.



CONTRACT 62X07

WORK ORDER NUMBER:

Field Work By:
Prepared By:

Standard - 30 Day
Completion Date

PAGE: of

Cook DuPage Kane
Lake McHenry Will

Team Section

Marked Route: Municipality: Side of Road:
Location:

Table with columns: LOCATION, MEASUREMENTS (WIDTH, LENGTH, TOTAL AREA), PRUNING FOR SAFETY & EQUIP. CLEAR., SELECTIVE CLEARING, TREE REMOVAL SPECIAL, TREE REMOVAL ACRES (SPECIAL). Includes a large 'SAMPLE' watermark.

Special Instructions:
Reason for Removal:

Authorization of Work, Certification of Completed Work, Office Use Only, Inspection and Acceptance of Completed Work. Includes signature lines for IDOT Resident Engineer/Technician, Contractor, and Inspector.

MODEL: Full; Default; FILE: Model; File Path: \\idot-cas-bentley.com\prod\DOT\Documens\DOT Office\dot\refet_1\proj\62X07\Drawings\Structures\62X07-24-dt-landscp.dgn

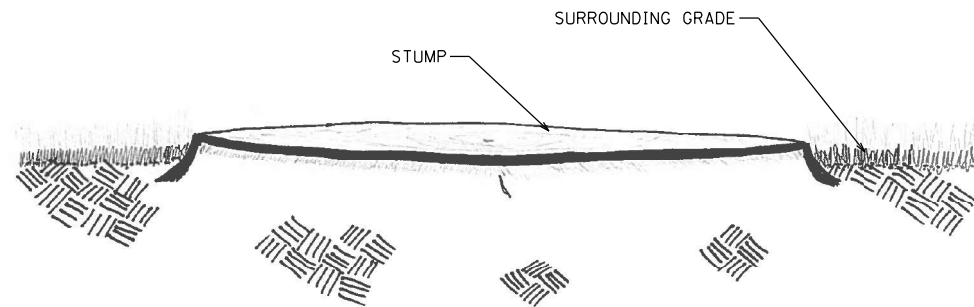
Table with columns: USER NAME, DESIGNED, DRAWN, PLOT SCALE, PLOT DATE, REVISED, CHECKED, DATE.

STATE OF ILLINOIS DEPARTMENT OF TRANSPORTATION

DEAL TREE REMOVAL SAMPLE WORK ORDER

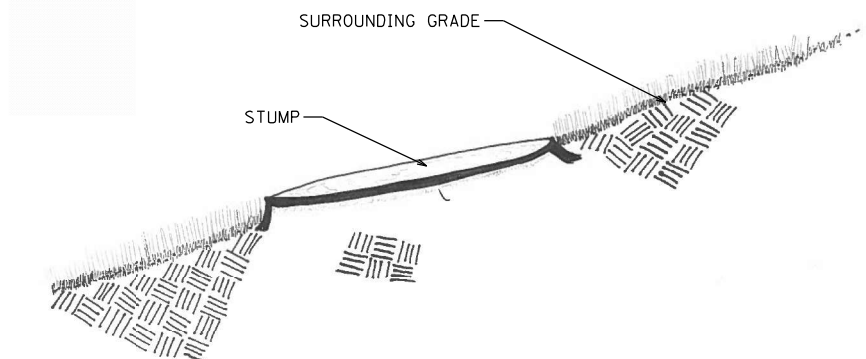
SCALE: SHEET OF SHEETS STA. TO STA.

Table with columns: F.A. RTE., SECTION, COUNTY, TOTAL SHEETS, SHEET NO., VAR, CONTRACT NO. 62X07, ILLINOIS FED. AID PROJECT.



STUMP CUT FLUSH AT A HORIZONTAL PLANE

NOTE: STUMPS SHALL BE CUT LESS THAN 2" OF THE SURROUNDING GRADE.



STUMP CUT FLUSH ON A SLOPE

NOTE: STUMPS SHALL BE CUT LESS THAN 2" OF THE SURROUNDING GRADE.

MODEL: Default
FILE NAME: p:\jilliot-pw_bentley.com\pwwid\DOT Documents\DOT Offices\District 1\Projects\ID122324\CADData\Structures\ID122324-4\IT-landsco.dgn

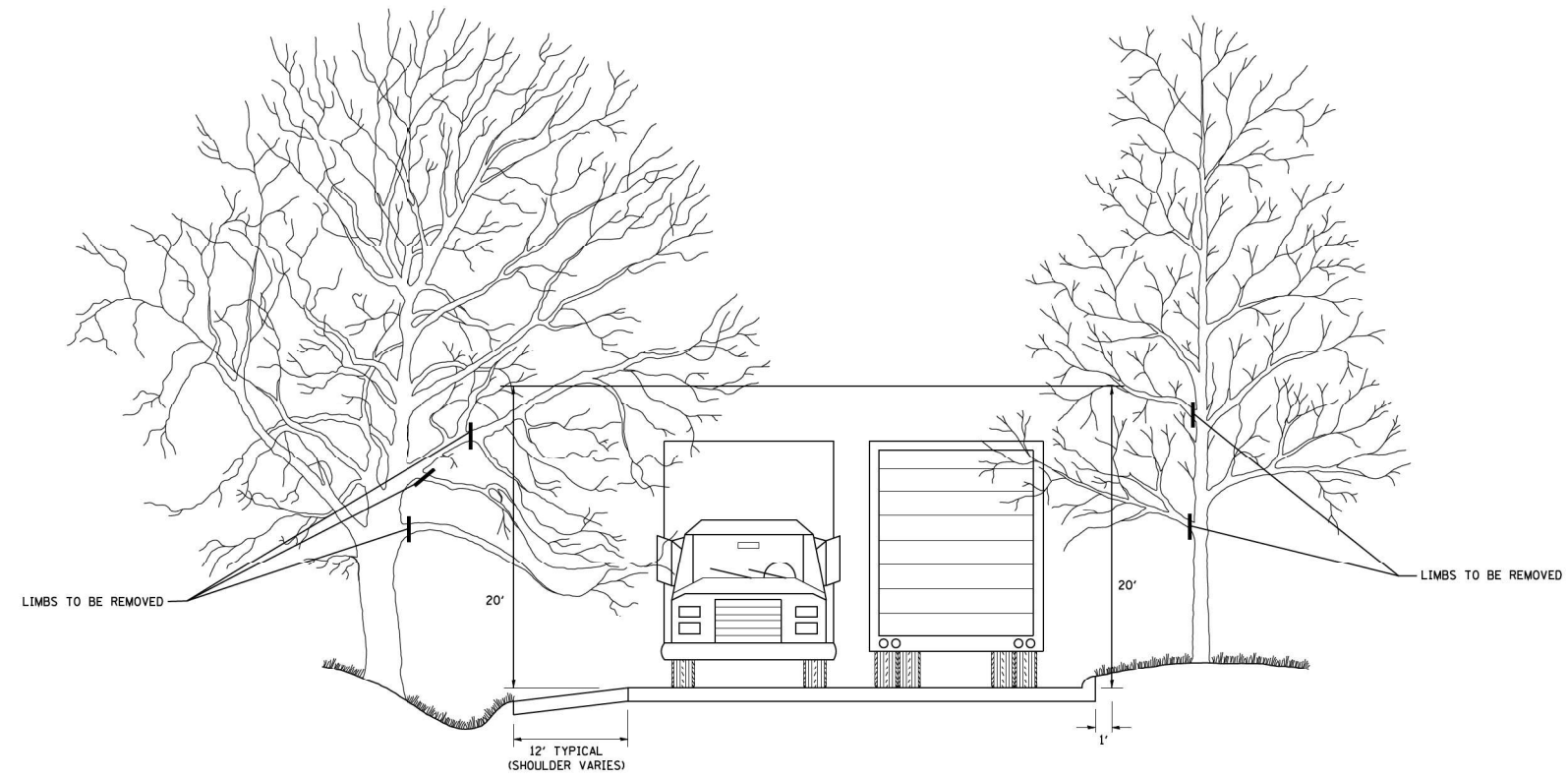
USER NAME = melissa.delrosario	DESIGNED -	REVISED -
	DRAWN -	REVISED -
PLOT SCALE = 99,8354' / in.	CHECKED -	REVISED -
PLOT DATE = 7/8/2024	DATE -	REVISED -

**STATE OF ILLINOIS
DEPARTMENT OF TRANSPORTATION**

**DEAD TREE REMOVAL
STUMP DETAILS**

SCALE: SHEET OF SHEETS STA. TO STA.

F.A. RTE.	SECTION	COUNTY	TOTAL SHEETS	SHEET NO.
VAR	2024-986-DTR	VARIOUS	9	6
			CONTRACT NO. 62X07	
		ILLINOIS	FED. AID PROJECT	



NOTE: IF A DEAD AND/OR HAZARDOUS LIMB IS FOUND TO BE AT A HIGHER ELEVATION THAN THE PRUNING CLEARANCE REQUIREMENT. THE CONTRACTOR SHALL PRUNE THE LIMB AND THE COST OF WORK SHALL BE INCLUDED IN THE COST OF THE PAY ITEM.

MODEL: C:\p\m\p\work\ch\benefit\com\p\W\DOT\Documents\DOT_offices\Drawings\1\Projects\122324\CAD\Drawings\Structures\122324-ehh-bandp.dgn
 FILE NAME: p\work\ch\benefit\com\p\W\DOT\Documents\DOT_offices\Drawings\1\Projects\122324\CAD\Drawings\Structures\122324-ehh-bandp.dgn

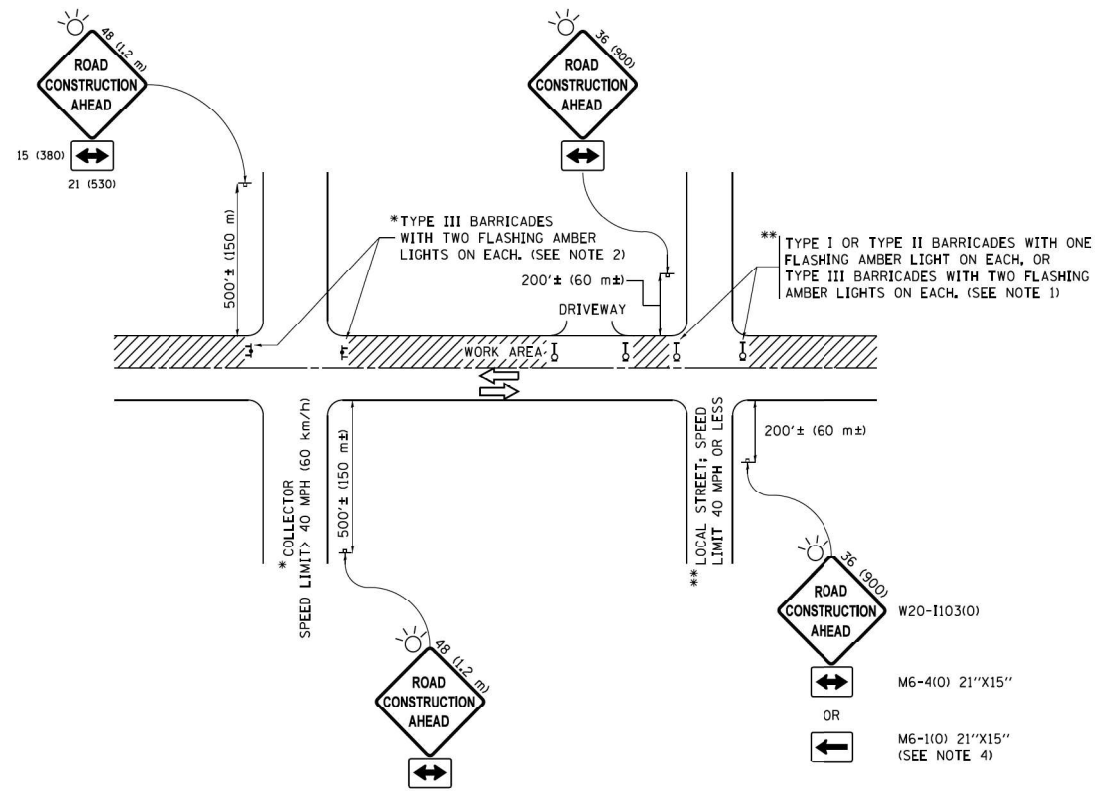
USER NAME = melissa.odrosario	DESIGNED -	REVISED -
	DRAWN -	REVISED -
PLOT SCALE = 100.0289' / in.	CHECKED -	REVISED -
PLOT DATE = 7/8/2024	DATE -	REVISED -

STATE OF ILLINOIS
DEPARTMENT OF TRANSPORTATION

DEAD TREE REMOVAL
PRUNING FOR SAFETY AND EQUIPMENT CLEARANCE

SCALE: SHEET OF SHEETS STA. TO STA.

F.A. RTE.	SECTION	COUNTY	TOTAL SHEETS	SHEET NO.
VAR	2024-986-DTR	VARIOUS	9	7
			CONTRACT NO. 62X07	
ILLINOIS FED. AID PROJECT				



NOTES:

1. SIDE ROAD WITH A SPEED LIMIT OF 40 MPH (60 km/h) OR LESS AS SHOWN ON THE DRAWING AND AS DIRECTED BY THE ENGINEER:
 - a) ONE "ROAD CONSTRUCTION AHEAD" SIGN 36 x 36 (900x900) WITH A FLASHER MOUNTED ON IT APPROXIMATELY 200' (60 m) IN ADVANCE OF THE MAIN ROUTE.
 - b) THE CLOSED PORTION OF THE MAIN ROUTE SHALL BE PROTECTED BY BLOCKING WITH TYPE I, TYPE II OR TYPE III BARRICADES, 1/3 OF THE CROSS SECTION OF THE CLOSED PORTION.
2. SIDE ROAD WITH A SPEED LIMIT GREATER THAN 40 MPH (60 km/h) AS SHOWN ON THE DRAWING AND AS DIRECTED BY THE ENGINEER:
 - a) ONE "ROAD CONSTRUCTION AHEAD" SIGN 48 x 48 (1.2 m x 1.2 m) WITH A FLASHER MOUNTED ON IT APPROXIMATELY 500' (150 m) IN ADVANCE OF THE MAIN ROUTE.
 - b) THE CLOSED PORTION OF THE MAIN ROUTE SHALL BE PROTECTED BY BLOCKING WITH TYPE III BARRICADES, 1/2 OF THE CROSS SECTION OF THE CLOSED PORTION.
3. CONES MAY BE SUBSTITUTED FOR BARRICADES OR DRUMS AT HALF THE SPACING DURING DAY OPERATIONS. CONES SHALL BE A MINIMUM OF 28 (710) IN HEIGHT.
4. WHEN THE SIDE ROAD LIES BETWEEN THE BEGINNING OF THE MAINLINE SIGNING AND THE WORK ZONE, A SINGLE HEADED ARROW (M6-1) SHALL BE USED IN LIEU OF THE DOUBLE HEADED ARROW (M6-4).
5. WHEN WORK IS BEING PERFORMED ON A SIDE ROAD OR DRIVEWAY, FOLLOW THE APPLICABLE STANDARD(S), THE DIRECTIONAL ARROW (M6-1 OR M6-4) SHALL BE COVERED OR REMOVED WHEN NO LONGER CONSISTENT WITH THE TRAFFIC CONTROL SET-UP.
6. ADVANCE WARNING SIGNS ARE TO BE OMITTED ON DRIVEWAYS UNLESS OTHERWISE SPECIFIED IN THE PLANS OR BY THE ENGINEER.
7. THE TRAFFIC CONTROL AND PROTECTION FOR SIDE ROADS, INTERSECTIONS, AND DRIVEWAYS SHALL BE INCLUDED IN THE COST OF SPECIFIED TRAFFIC CONTROL STANDARDS OR ITEMS.

All dimensions are in inches (millimeters) unless otherwise shown.

MOOREL D:\p\full FILE NAME: p:\pl\disc-aw-bentley.com\FW\DOT\Documents\DOT Offices\Dir\drct_1\Project\0122324\CAD\Drawings\Structures\0122324-ssh-labandegp.dgn

USER NAME = melissa.delrosario	DESIGNED -	REVISED -
PLOT SCALE = 100,0103' / in.	DRAWN -	REVISED -
PLOT DATE = 7/8/2024	CHECKED -	REVISED -
	DATE -	REVISED -

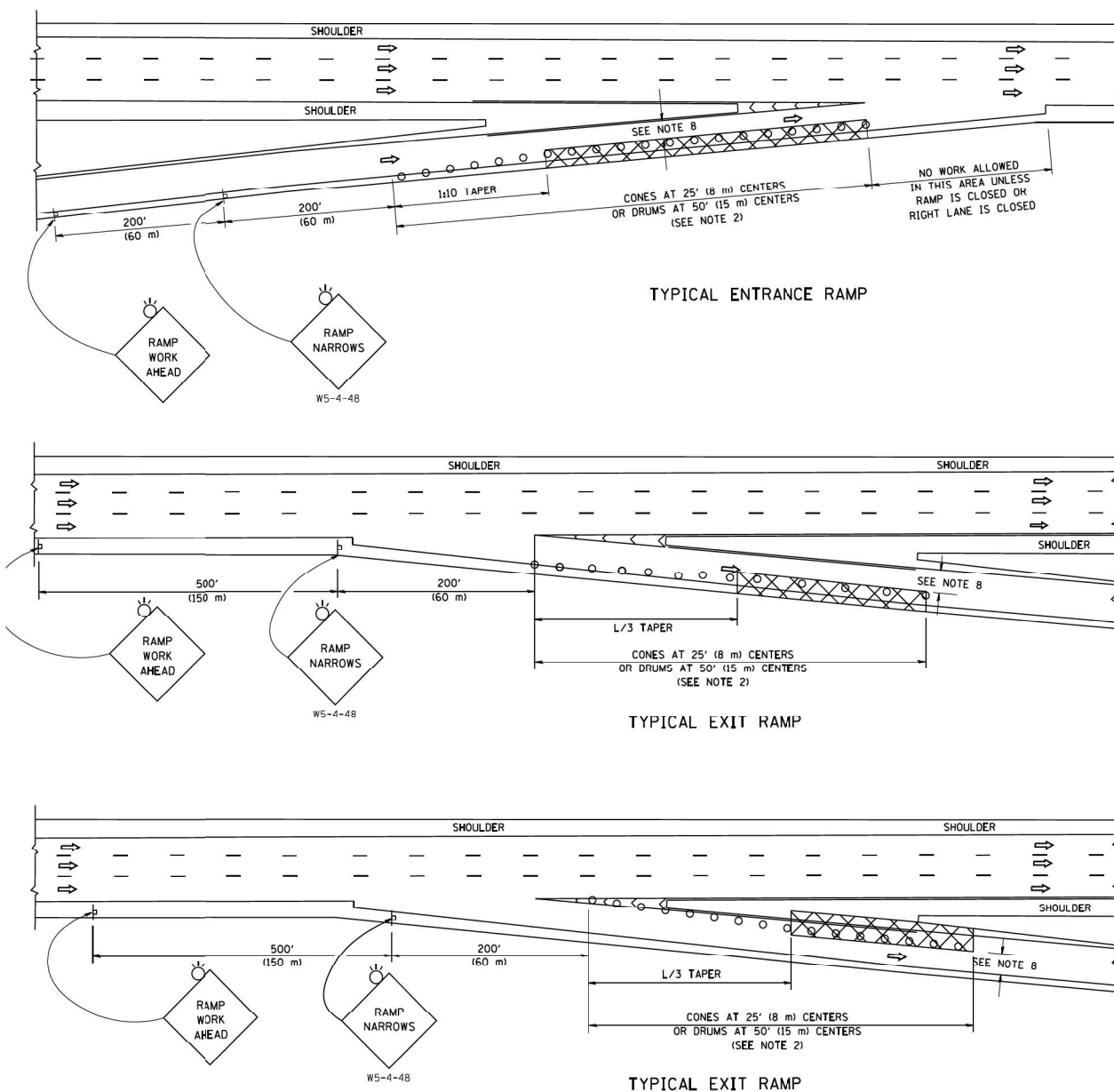
**STATE OF ILLINOIS
DEPARTMENT OF TRANSPORTATION**

**TRAFFIC CONTROL AND PROTECTION FOR SIDE
ROADS, INTERSECTIONS, & DRIVEWAYS (TC-10)**

SCALE: SHEET OF SHEETS STA. TO STA.

F.A. RTE.	SECTION	COUNTY	TOTAL SHEETS	SHEET NO.
	2024-986-DTR	VARIOUS	9	8
CONTRACT NO. 62X07				
ILLINOIS FED. AID PROJECT				

PARTIAL RAMP CLOSURE DETAILS



SYMBOLS

- ACTIVE WORK AREA
- SIGN ON PORTABLE OR PERMANENT SUPPORT
- FLAGGER WITH CONTROL SIGN
- TYPE II BARRICADE OR DRUM
- CONE, DRUM OR BARRICADE
- IMPACT ATTENUATOR OF TYPE AND TEST LEVEL SPECIFIED

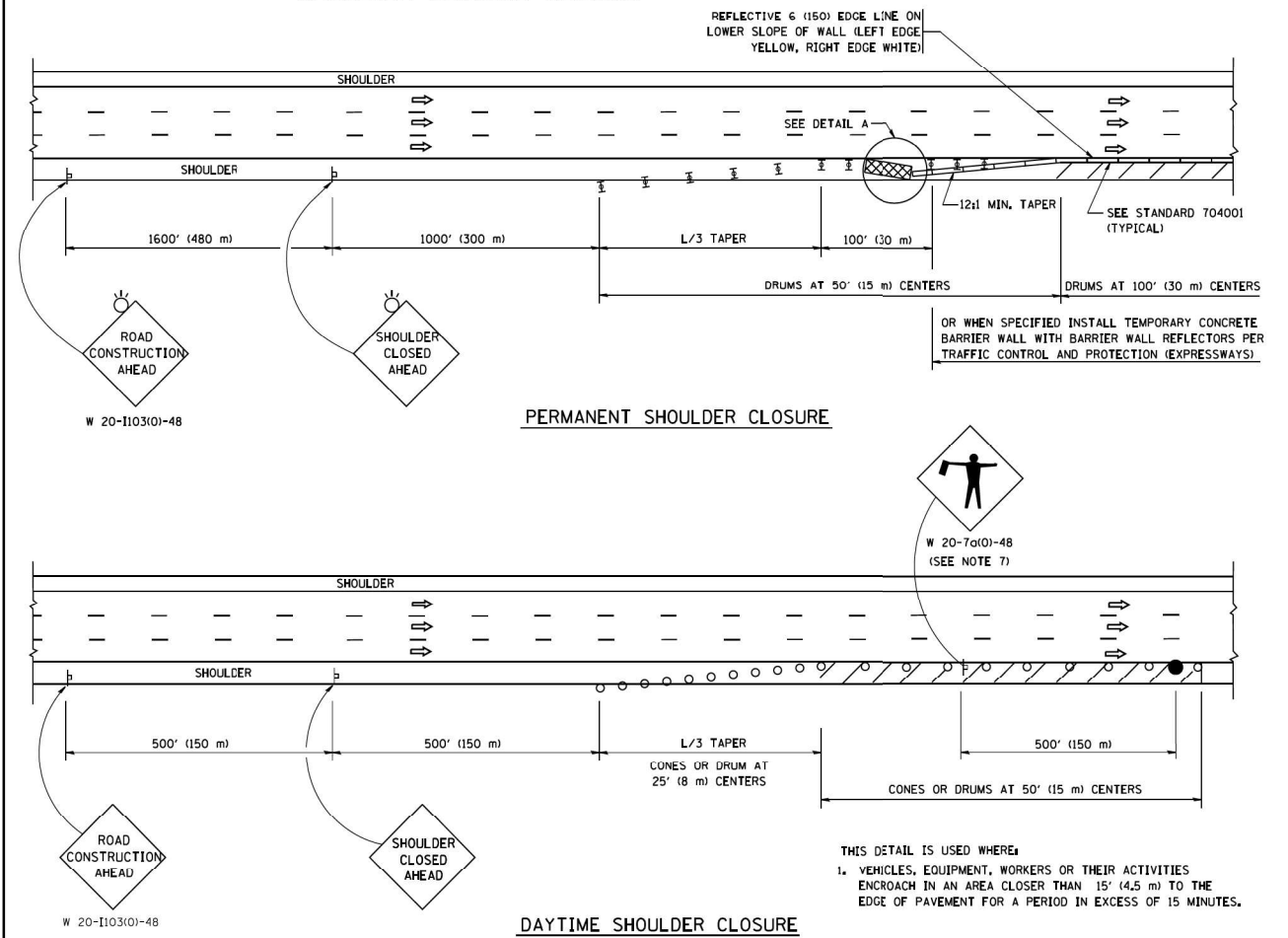
GENERAL NOTES

1. THE "L" DISTANCE EQUALS:

SPEED LIMIT	METRIC	ENGLISH
45 mph (80 km/h) OR GREATER	$L=0.65(W)(S)$	$L=(W)(S)$

W = WIDTH OF OFFSET IN FEET (METERS)
S = NORMAL POSTED SPEED MPH (KM/H)
2. TYPE II BARRICADES OR DRUMS ARE REQUIRED FOR ALL NIGHTTIME CLOSURES. TYPE II BARRICADES OR DRUMS WITH MONODIRECTIONAL STEADY BURN LIGHTS ARE REQUIRED FOR DELINEATING OBSTACLES, EXCAVATIONS, OR HAZARDS EXCEEDING 100 FT (30m) IN LENGTH AT NIGHT.
3. ALL SIGNS SHALL BE POST MOUNTED IF THE CLOSURE TIME EXCEEDS FOUR DAYS.
4. FLASHING LIGHTS SHALL BE USED DURING THE HOURS OF DARKNESS AND SHALL BE INSTALLED ABOVE THE FIRST TWO SETS OF SIGNS.

SHOULDER CLOSURE DETAILS



THIS DETAIL IS USED WHERE:

1. VEHICLES, EQUIPMENT, WORKERS OR THEIR ACTIVITIES ENCR OACH IN AN AREA CLOSER THAN 15' (4.5 m) TO THE EDGE OF PAVEMENT FOR A PERIOD IN EXCESS OF 15 MINUTES.

ARRAY DESIGN PER MANUFACTURER TO BE NCHRP 350/MASH COMPLIANT.

ALL DIMENSIONS ARE IN INCHES (MILLIMETERS) UNLESS OTHERWISE SHOWN.

MODEL: Default; FILE NAME: \\wuldr-pw-bentley.com\PI\P\DOT\Documents\DOT Offices\District 1\Projects\ID122324\CADD\InfoStructures\ID122324-shl-bn-isc.dgn

USER NAME = melissa.delrosario	DESIGNED -	REVISED -
DRAWN -	REVISI O -	
PLOT SCALE = 100.0669 ' / in.	CHECKED -	REVISED -
PLOT DATE = 7/8/2024	DATE -	REVISED -

**STATE OF ILLINOIS
DEPARTMENT OF TRANSPORTATION**

**TRAFFIC CONTROL DETAIL FOR FREEWAY SHOULDER
CLOSURES AND PARTIAL RAMP CLOSURE (TC-17)**

SCALE: SHEET OF SHEETS STA. TO STA.

F.A. RTE.	SECTION	COUNTY	TOTAL SHEETS	SHEET NO.
VAR	2024-986-DTR	VARIOUS	9	9
			CONTRACT NO. 62X07	
ILLINOIS FED. AID PROJECT				