

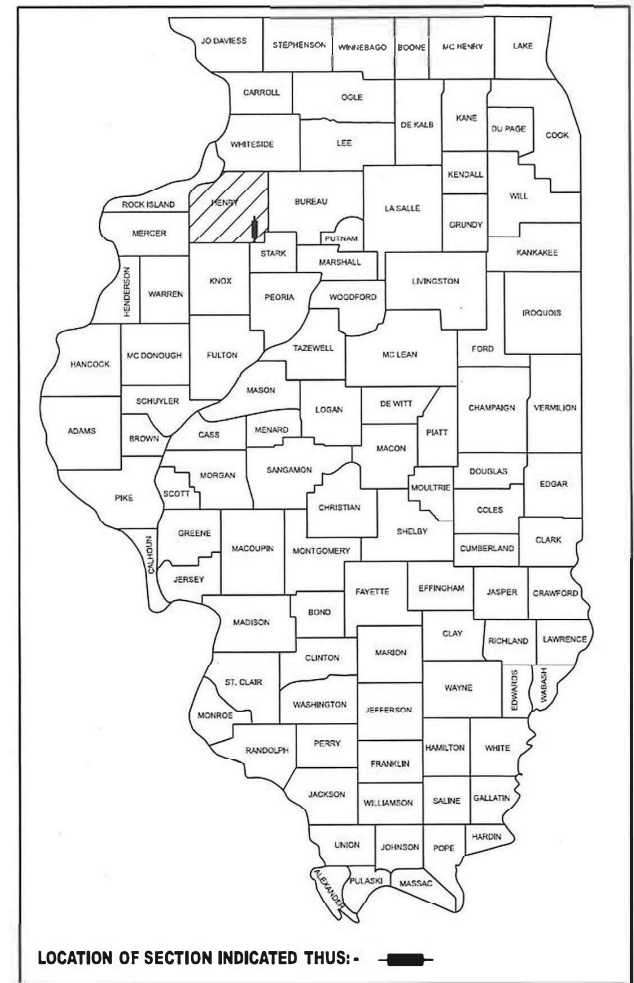
STATE OF ILLINOIS
DEPARTMENT OF TRANSPORTATION

PROPOSED
HIGHWAY PLANS

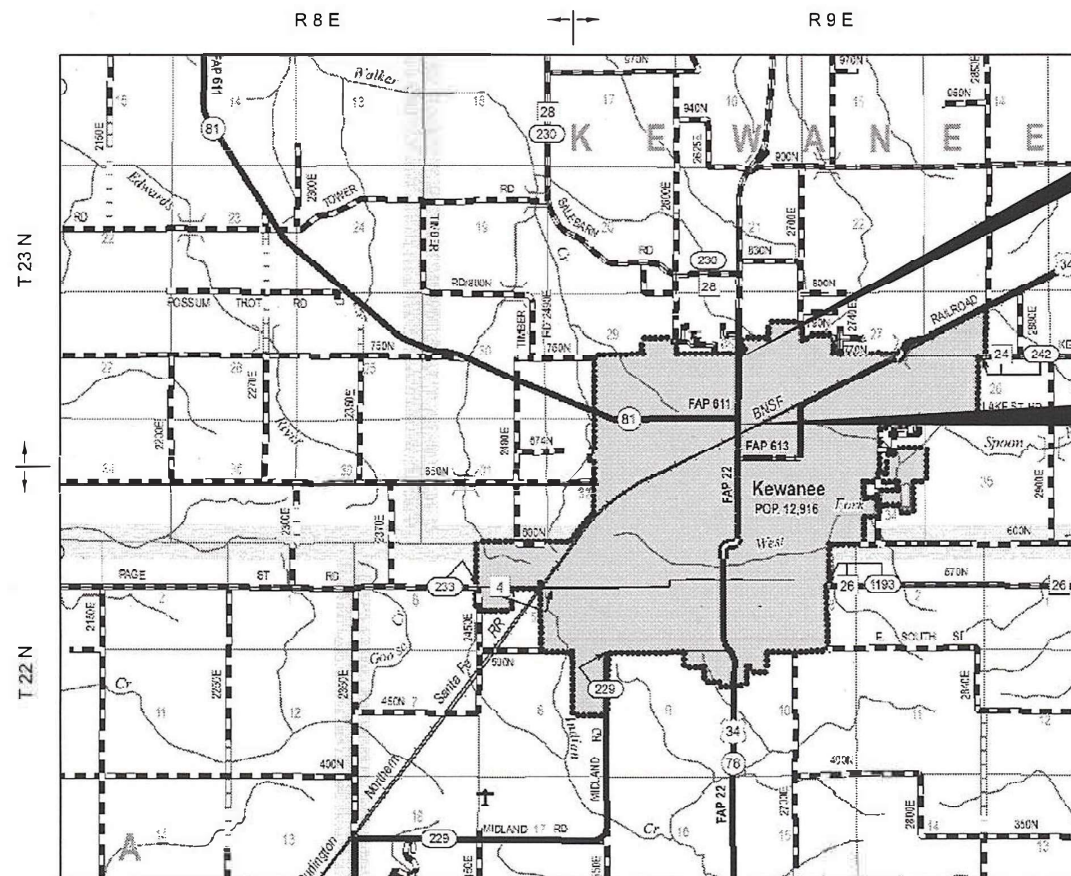
ROUTE FAP 22
SECTION D2 PP 2025-01
SKIP PATCHING
HENRY COUNTY

F.A.P. RTE.	SECTION	COUNTY	TOTAL SHEETS	SHEET NO.
22	D2 PP 2025-01	HENRY	9	1
		ILLINOIS	CONTRACT NO. 64U01	

D-92-082-25

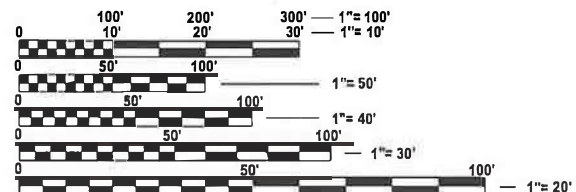


C-92-202-24



PROJECT ENDS
STA. 390+00
10TH ST.

PROJECT BEGINS
STA. 365+00
N. SIDE OF BNSF RR



FULL SIZE PLANS HAVE BEEN PREPARED USING STANDARD ENGINEERING SCALES. REDUCED SIZED PLANS WILL NOT CONFORM TO STANDARD SCALES. IN MAKING MEASUREMENTS ON REDUCED PLANS, THE ABOVE SCALES MAY BE USED.

J.U.L.I.E.
JOINT UTILITY LOCATION INFORMATION FOR EXCAVATION
1-800-892-0123
OR 811

GROSS LENGTH = 5000 FT. = .95 MILES
NET LENGTH = 2500 FT. = .47 MILES

STATE OF ILLINOIS
DEPARTMENT OF TRANSPORTATION

SUBMITTED July 3 20 24
Sasha Shroy REGIONAL ENGINEER

August 16, 2024
[Signature]
ENGINEER OF DESIGN AND ENVIRONMENT

August 16, 2024
[Signature]
DIRECTOR OF HIGHWAYS PROJECT IMPLEMENTATION 13

PRINTED BY THE AUTHORITY
OF THE STATE OF ILLINOIS

INDEX OF SHEETS

- 1 COVER SHEET
- 2 INDEX OF SHEETS, STANDARDS, GENERAL NOTES
- 3 SUMMARY OF QUANTITIES
- 4 SCHEDULE OF QUANTITIES
- 5-9 D2 STANDARDS

HIGHWAY STANDARDS

- 420001-10 PAVEMENT JOINTS
- 420701-03 PAVEMENT WELDED WIRE REINFORCEMENT
- 442101-09 CLASS B PATCHES
- 701501-06 URBAN LANE CLOSURE, 2L, 2W, UNDIVIDED
- 701502-09 URBAN LANE CLOSURE, 2L, 2W, WITH BIDIRECTIONAL LEFT TURN LANE
- 701901-09 TRAFFIC CONTROL DEVICES
- 780001-05 TYPICAL PAVEMENT MARKINGS

DISTRICT STANDARDS

- 41.1 TYPICAL PAVEMENT MARKINGS
- 79.4b INLET SPECIAL, NO. 5

GENERAL NOTES

THE CONTRACTOR SHALL NOTIFY TRAFFIC OPERATIONS A MINIMUM OF 5 DAYS PRIOR TO PLACING PERMANENT PAVEMENT MARKINGS.

WHEN LAYING OUT FOR PATCHING, THE MINIMUM DISTANCE BETWEEN NEW PATCHES (SAW CUT TO SAW CUT) SHALL BE 15 FEET. WHEN PATCH SPACING IS LESS THAN 15 FEET, THE PAVEMENT BETWEEN PATCHES SHALL ALSO BE REMOVED AND REPLACED.

CLASS B PATCH QUANTITIES ARE FOR CONTINGENCY USE ONLY. ONCE SURFACE IS MILLED THE ENGINEER WILL DETERMINE IF A PATCH IS REQUIRED.

IF IT IS DETERMINED THERE ARE PATCHES, CONTRACTOR SHALL ONLY REMOVE MATERIAL THAT CAN BE REPLACED THAT SAME DAY ACCORDING TO ARTICLE 442.09 OF THE STANDARD SPECIFICATIONS FOR ROAD AND BRIDGE CONSTRUCTION.

THE RE SHALL CONTACT STEPHANIE MCMEEKAN AT (815) 677-5282 FOR PATCHING LAYOUT

THE AREA TO BE TACKED OR PRIMED SHALL BE LIMITED TO THAT WHICH CAN BE COVERED WITH HMA ON THE NEXT DAYS PRODUCTION, BUT NO MORE THAN FIVE DAYS IN ADVANCE OF THE PLACEMENT OF THE HMA, UNLESS APPROVED BY THE ENGINEER.

Location and Mixture Use(s):	Surface
PG:	PG 58-28
Design Air Voids:	4.0 @N50
Mixture Composition:	IL 9.5
Friction Aggregate:	C
Mixture Weight:	112 lb/sy/in
Quality Management Program:	QCQA
Sublot Size:	N/A
Material Transfer Device	N/A

INLET SPECIAL NO. 5 LID TO BE REPLACED AT THE NE CORNER OF 7TH ST. IS IN THE RADIUS OF THE CURVE. CONTRACTOR TO VERIFY RADIUS TO MATCH EXISTING BEFORE ORDERING AND REPLACING.

MODEL: D2_BHT_INDEX
 FILE NAME: \\p10000001\p10000001\DOT\Office\District 2\DOTD Projects\Operations\Maintenance Section\Stephanie McMeekan\BHT\Operations\Contract Maintenance\2024\64U01 - L 78 Patching - Kowalewicz\CA\Drawings\64U01 - 02 - Index Sheet.dgn

USER NAME = Nicholas.Vock	DESIGNED -	REVISED -
	DRAWN -	REVISED -
PLOT SCALE = \$\$SCALE\$	CHECKED -	REVISED -
PLOT DATE = 7/3/2024	DATE -	REVISED -

**STATE OF ILLINOIS
DEPARTMENT OF TRANSPORTATION**

INDEX OF SHEETS & HIGHWAY STANDARDS

SCALE: SHEET OF SHEETS STA. TO STA.

F.A.P. RTE.	SECTION	COUNTY	TOTAL SHEETS	SHEET NO.
22	D2 PP 2025-01	HENRY	9	2
CONTRACT NO. 64U01				
ILLINOIS FED. AID PROJECT				

MODEL: D2_SUF_S00
 FILE NAME: p:\projects\2024\2024\DOT\Office\District 2\CDR\Projects\Operations\Maintenance Section\Sheets\Henry\Operations\Contract Maintenance\FY 2024\64U01 - IL 78 Patching - Kenanra CAD\Drawings\64U01 - 05 - S00.dgn

SUMMARY OF QUANTITIES				CONSTR. CODE	
				100% STATE	
CODE NO.	ITEM	UNIT	TOTAL QUANTITY	NONE	0006
40600290	BITUMINOUS MATERIALS (TACK COAT)	POUND	1146	1146	
44000156	HOT-MIX ASPHALT SURFACE REMOVAL, 1 3/4"	SQ YD	2547	2547	
44200050	WELDED WIRE REINFORCEMENT	SQ YD	24	24	
44201019	CLASS B PATCHES, TYPE II, 14 INCH	SQ YD	15	15	
44201023	CLASS B PATCHES, TYPE III, 14 INCH	SQ YD	24	24	
44201299	DOWEL BARS 1 1/2"	EACH	40	40	
44213200	SAW CUTS	FOOT	130	130	
67100100	MOBILIZATION	L SUM	1	1	
70102620	TRAFFIC CONTROL AND PROTECTION, STANDARD 701501	L SUM	1	1	
70102622	TRAFFIC CONTROL AND PROTECTION, STANDARD 701502	L SUM	1	1	
70103815	TRAFFIC CONTROL SURVEILLANCE	CAL DA	3	3	
* 78001100	PAINT PAVEMENT MARKING - LETTERS AND SYMBOLS	SQ FT	217	217	
* 78001110	PAINT PAVEMENT MARKING - LINE 4"	FOOT	3207	3207	
* 78001140	PAINT PAVEMENT MARKING - LINE 8"	FOOT	232	232	

*= SPECIALTY ITEM

SUMMARY OF QUANTITIES				CONSTR. CODE	
				100% STATE	
CODE NO.	ITEM	UNIT	TOTAL QUANTITY	NONE	0006
* 78001150	PAINT PAVEMENT MARKING - LINE 12"	FOOT	272	272	
* 78001180	PAINT PAVEMENT MARKING - LINE 24"	FOOT	70	70	
X4421000	PARTIAL DEPTH PATCHING	TON	250	250	
X6030100	REMOVE AND REPLACE LID	EACH	1	1	

*= SPECIALTY ITEM

USER NAME = Nicholas.Vock	DESIGNED -	REVISED -
PLOT SCALE = \$SCALE\$	DRAWN -	REVISED -
PLOT DATE = 7/3/2024	CHECKED -	REVISED -
	DATE -	REVISED -

STATE OF ILLINOIS
DEPARTMENT OF TRANSPORTATION

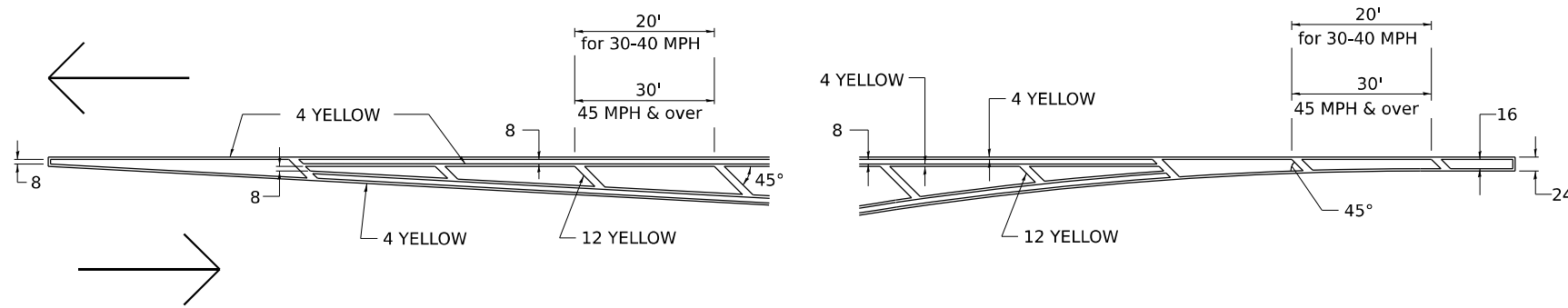
SUMMARY OF QUANTITIES

SCALE: SHEET OF SHEETS STA. TO STA.

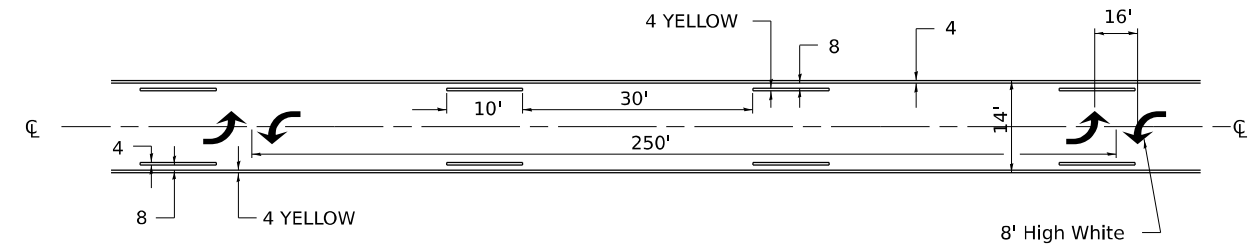
F.A.P. RTE.	SECTION	COUNTY	TOTAL SHEETS	SHEET NO.
22	D2 PP 2025-01	HENRY	9	3
CONTRACT NO. 64U01				
ILLINOIS FED. AID PROJECT				

TYPICAL PAVEMENT MARKINGS

TYPICAL PAVEMENT MARKING FOR FLUSH MEDIAN AT LEFT TURN LANE

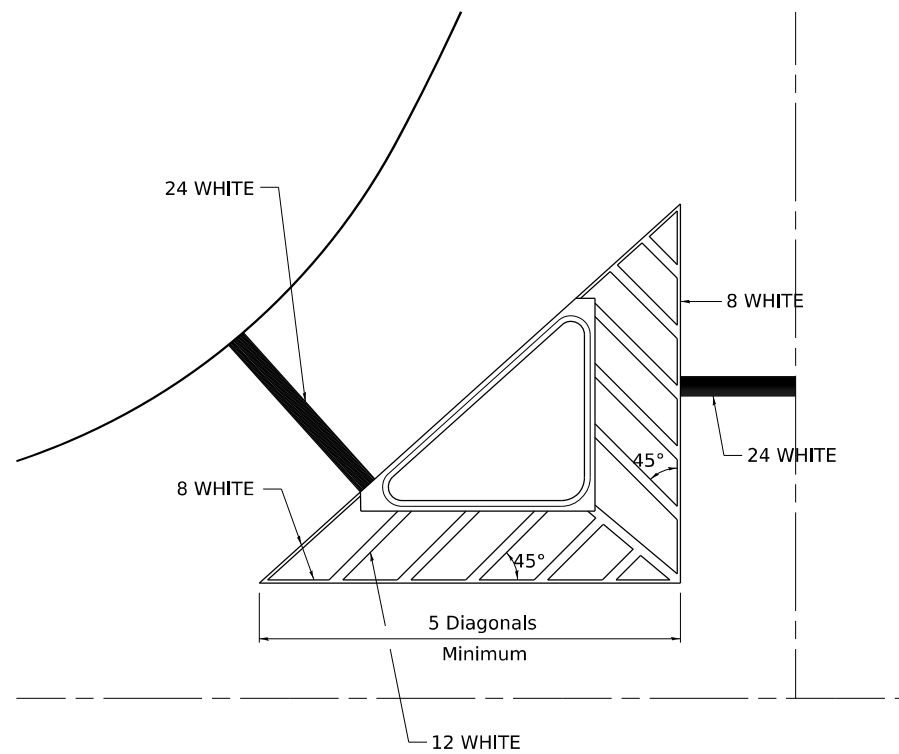


MEDIAN PAVEMENT MARKING



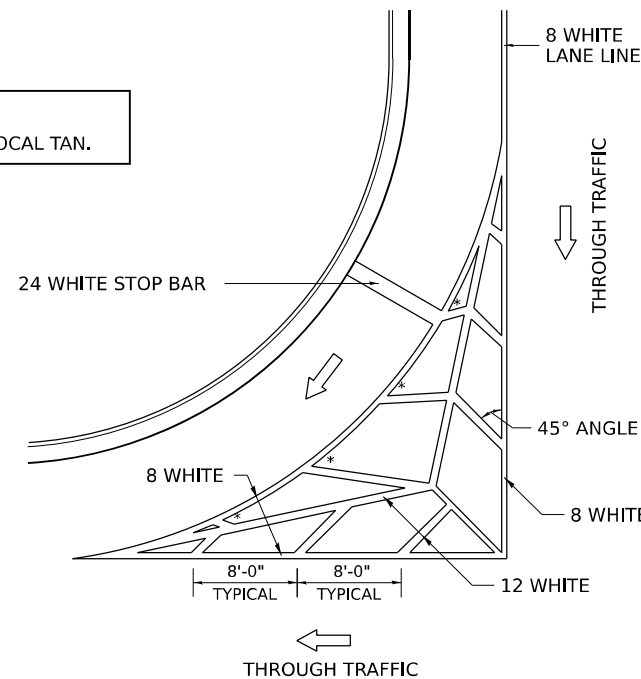
** ALL DIMENSIONS ARE IN INCHES UNLESS OTHERWISE NOTED.

TYPICAL ISLAND OFFSET SHOULDER WIDTH



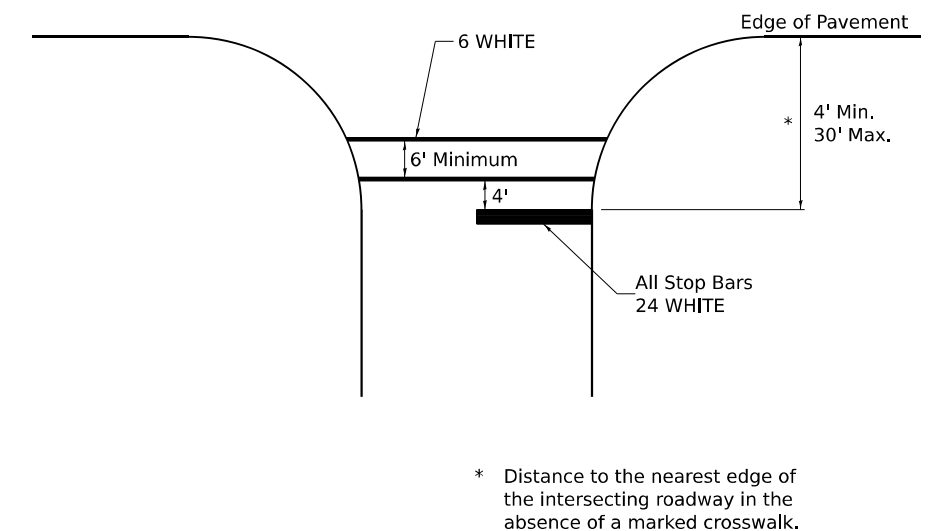
TYPICAL MARKING FOR PAINTED ISLANDS

NOTE:
* 45° TO LOCAL TAN.



STANDARD CROSSWALK MARKING

See Schedules for Locations



MODEL: D2 STANDARD 41.1
FILE NAME: P:\GIS\Projects\Operations\Maintenance\Section\Standard\Markings\Operations\Contract Maintenance\FY2024\41.1 - ILL 73 Patching - Kenanra CAD\Drawings\41.1 - 05 - Standards.dgn

USER NAME = Nicholas, Vock	DESIGNED -	REVISED - 6-27-14
PLOT SCALE = \$SCALE\$	DRAWN -	REVISED - 3-05-12
PLOT DATE = 7/3/2024	CHECKED -	REVISED -
	DATE -	REVISED -

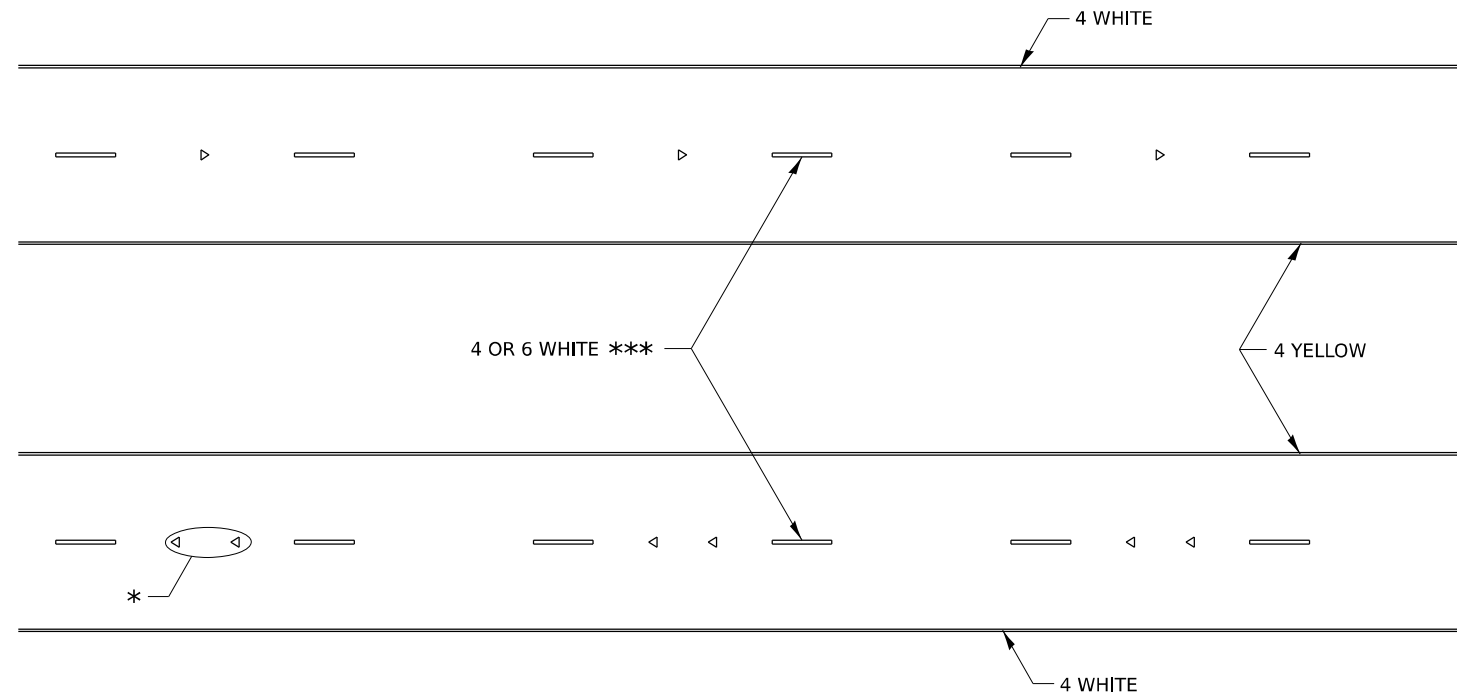
STATE OF ILLINOIS
DEPARTMENT OF TRANSPORTATION

REGION 2 / DISTRICT 2 STANDARD

SCALE: SHEET OF SHEETS STA. TO STA.

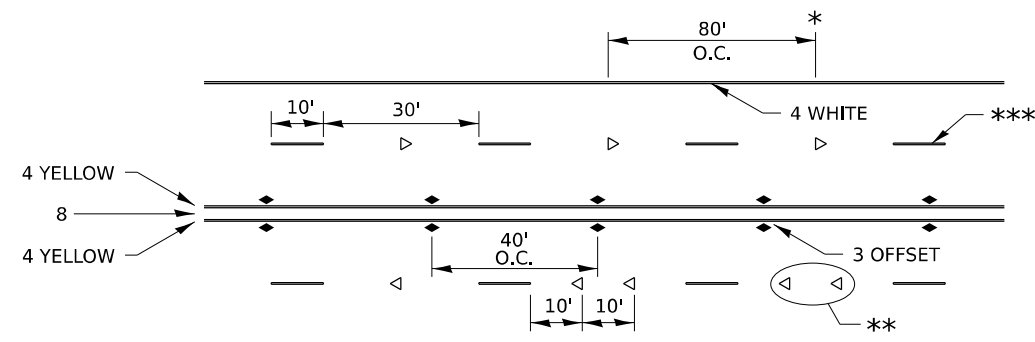
F.A.P. RTE.	SECTION	COUNTY	TOTAL SHEETS	SHEET NO.
22	D2 PP 2025-01	HENRY	9	5
CONTRACT NO. 64U01				
ILLINOIS FED. AID PROJECT				

TYPICAL PAVEMENT MARKINGS



* SEE HIGHWAY STANDARD 781001 FOR SPACING DETAILS.
USE DOUBLE MARKERS WHEN ADT ≥ 20,000.

MULTI-LANE / DIVIDED



* REDUCE TO 40' O.C. ON CURVES WHERE ADVISORY SPEEDS ARE 10 MPH LOWER THAN POSTED SPEEDS.

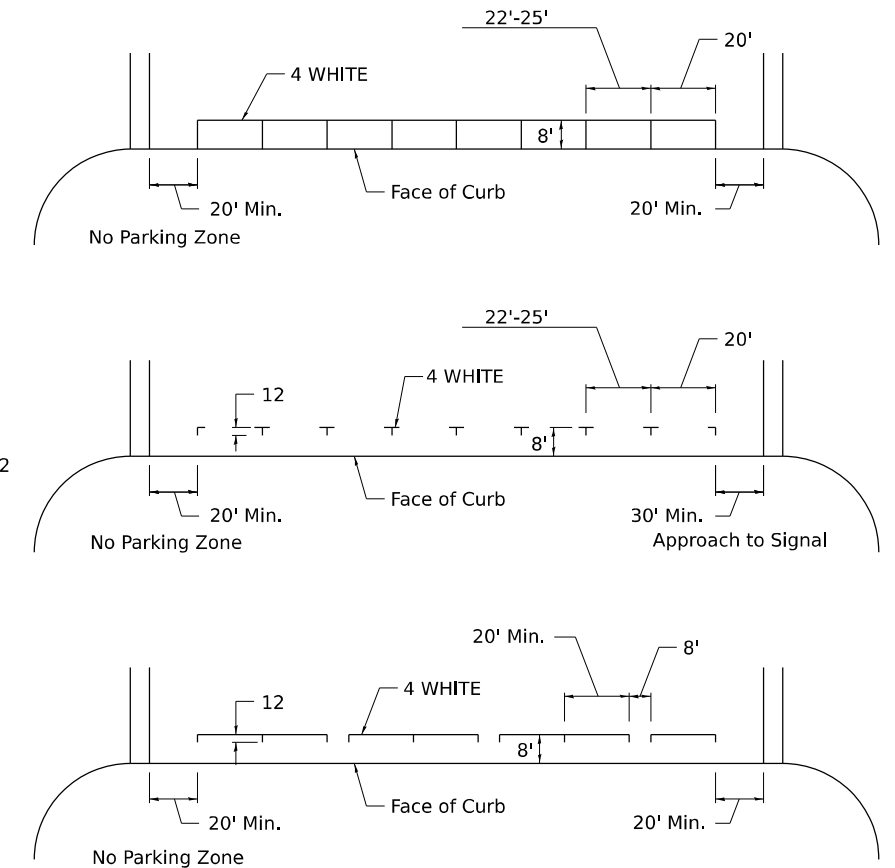
** USE DOUBLE MARKERS WHEN ADT ≥ 20,000

*** CENTERLINE SKIP DASH PAVEMENT MARKING SPEED LIMIT LESS THAN 40 MPH USE 4" LINE. SPEED LIMIT 40 MPH AND OVER USE 6" LINE.

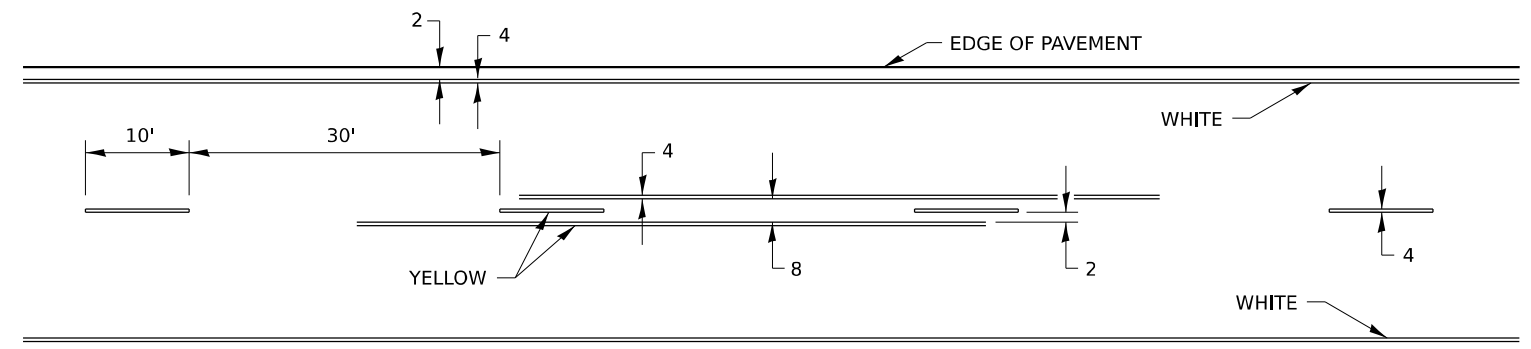
MULTI-LANE / UNDIVIDED & ONE WAY

(FOR MULTI-LANE UNDIVIDED HIGHWAYS USE THIS
DETAIL NOT HIGHWAY STANDARD 781001)

TYPICAL PARKING SPACING



TYPICAL PAVEMENT MARKING FOR TWO LANE SECTION – NO PASSING ZONES



MODEL: PD STANDARD 41.1-3
FILE NAME: p:\projects\2024\20240410\20240410-11-78-Pavement-Markings\Drawings\Operations\Contract Maintenance\FY2024\64U01-11-78-Pavement-Markings\Drawings\Operations\Contract Maintenance\FY2024\64U01-11-78-Pavement-Markings.dgn

USER NAME = Nicholas,Vock	DESIGNED -	REVISED - 6-27-14
PLOT SCALE = \$SCALE\$	DRAWN -	REVISED - 8-27-13
PLOT DATE = 7/3/2024	CHECKED -	REVISED - 11-28-12
	DATE -	REVISED -

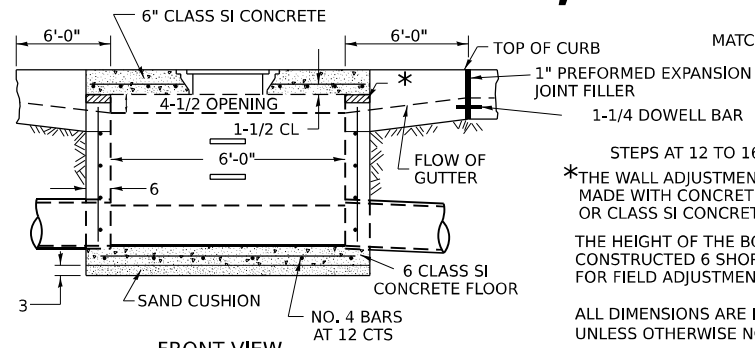
STATE OF ILLINOIS
DEPARTMENT OF TRANSPORTATION

REGION 2 / DISTRICT 2 STANDARD

SCALE: SHEET OF SHEETS STA. TO STA.

F.A.P. RTE.	SECTION	COUNTY	TOTAL SHEETS	SHEET NO.
22	D2 PP 2025-01	HENRY	9	7
CONTRACT NO. 64U01				
ILLINOIS FED. AID PROJECT				

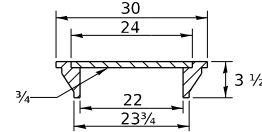
INLETS, SPECIAL, NO. 5



FRONT VIEW

SEE STANDARD 602701 FOR DETAILS OF STEPS.
 1" PREFORMED EXPANSION JOINTS AS SHOWN SHALL BE PROVIDED ON EACH SIDE OF INLET.
 CLASS SI CONCRETE OR PRECAST CONCRETE SHALL BE USED THROUGHOUT.
 THE SIDE WALLS MAY BE BUILT AS PRECAST SEGMENTAL SECTIONS.
 REINFORCEMENT FOR INLETS, SPECIAL, NO. 5 SHALL BE ACCORDING TO DISTRICT STANDARD 79.4g

LIGHT WEIGHT MANHOLE CASTING



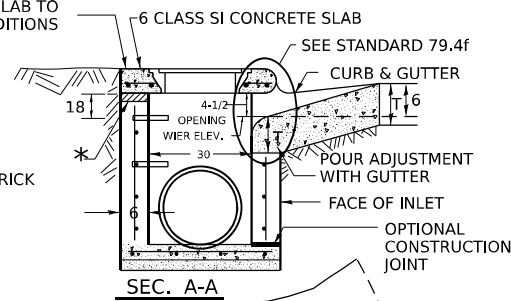
TOTAL WEIGHT 160 LBS.

REVISED - 1-05-16
 REVISED - 8-27-13
 REVISED - 10-04-11

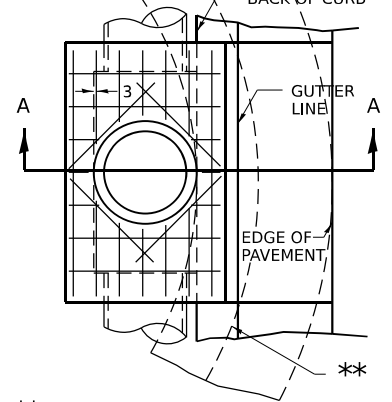
NOTES

STEPS SHALL BE OMITTED WHEN DEPTH OF INLET IS LESS THAN 5 FOOT
 THE INLET SHALL BE CAST IN PLACE OR PRECAST.
 EXCEPT AS NOTED HEREON INLETS, SPECIAL, NO. 5 SHALL BE CONSTRUCTED IN ACCORDANCE WITH SECTION 602 OF THE STANDARD SPECIFICATIONS.
 THE CONTRACT UNIT PRICE EACH FOR INLET SPECIAL NO. 5 SHALL INCLUDE THE COST OF FURNISHING AND INSTALLING THE FRAME, I.D., REINFORCEMENT BARS, FLOOR AND TOP SLABS, CAST IRON STEPS (IF USED).
 THE CURB AND GUTTER WILL BE PAID FOR SEPARATELY AND WILL BE MEASURED THROUGH THE INLET.
 THE CURB AND GUTTER ADJACENT TO AND 6 FOOT ON EITHER SIDE OF THE INLET SHALL BE CONSTRUCTED AS SHOWN WITH NO ADDITIONAL COMPENSATION FOR THE TRANSITION.
 ALL PIPE UNDERDRAIN CONNECTIONS WHEN SPECIFIED SHALL BE DONE IN ACCORDANCE WITH ART. 601 OF THE STANDARD SPECIFICATIONS. THIS WORK WILL BE PAID FOR AT THE CONTRACT UNIT PRICE PER (FOOT) FOR PIPE UNDERDRAINS, TYPE 2 OR PIPE UNDERDRAINS (SPECIAL) OF THE DIAMETER SPECIFIED WHICH PRICE SHALL INCLUDE THE CA7 OR CA16 AND THE CONNECTION TO THE INLET.

SLOPE TOP SLAB TO MATCH FINAL CONDITIONS



SEC. A-A



**WHEN INLET IS CONSTRUCTED IN RETURN, THE TOP OF SLAB SHALL CONFORM TO THE RADIUS OF THE RETURN.

INLETS, SPECIAL, NO. 5 79.4b

MODEL: SHT_PLAN
 FILE NAME: C:\Bentley\CONNECT1011\Organization-Civil\IDOT_Standards\Civil\IDOT_Sheets.cad
 PLOT DATE: 12/7/2022

REVISED -	REGION 2 / DISTRICT 2 STANDARD				F.A.P. RTE.	SECTION	COUNTY	TOTAL SHEETS	SHEET NO.
REVISED -					22	D2 PP 2025-01	HENRY	9	9
REVISED -					CONTRACT NO. 64U01				
REVISED -					SCALE:	SHEET	OF	SHEETS	STA.