



**GENERAL NOTES**

**COMMITMENTS**

PLAN DIMENSION AND DETAILS RELATIVE TO EXISTING PLANS ARE SUBJECT TO NOMINAL CONSTRUCTION VARIATIONS. THE CONTRACTOR SHALL FIELD VERIFY EXISTING DIMENSIONS AND DETAILS AFFECTING NEW CONSTRUCTION AND MAKE NECESSARY APPROVED ADJUSTMENTS PRIOR TO CONSTRUCTION OR ORDERING OF MATERIALS. SUCH VARIATIONS SHALL NOT BE CAUSE FOR ADDITIONAL COMPENSATION FOR A CHANGE IN SCOPE OF WORK; HOWEVER, THE CONTRACTOR WILL BE PAID FOR THE QUANTITY ACTUALLY FURNISHED AT THE UNIT PRICE BID FOR THE WORK.

NONE

ALL EXCAVATED MATERIAL, WHICH INCLUDES DIGGING OR GRADING OF ANY SOIL OR FILL MATERIAL, WITH THE EXCEPTION OF AGGREGATE FILLS, MUST BE INCORPORATED WITH THE IDOT RIGHT OF WAY.

THE CONTRACTOR SHALL CONTACT JULIE AT LEAST 48 HOURS PRIOR TO EXCAVATION TO DETERMINE WHICH UTILITIES ARE IN THE AREA.

MODEL: Default  
FILE NAME: c:\p\work\pww\collan\lauerbach\k0980847\0368P50-Cover.dgn

USER NAME = kylie.lauterbach	DESIGNED -	REVISED -	<b>STATE OF ILLINOIS DEPARTMENT OF TRANSPORTATION</b>	<b>GENERAL NOTES</b>	F.A.I RTE.	SECTION	COUNTY	TOTAL SHEETS	SHEET NO.	
	DRAWN -	REVISED -			39	D3 PATCHING 2025-1	LASALLE	13	2	
	CHECKED -	REVISED -			CONTRACT NO. 66P50					
PLOT DATE = 6/26/2024	DATE -	REVISED -			SCALE:	SHEET	OF	SHEETS	STA.	TO STA.
					ILLINOIS FED. AID PROJECT					

100% STATE  
CONSTRUCTION CODE

CODE NO.	ITEM	UNIT	TOTAL QUANTITY	ROADWAY	
				0006 RURAL	0006 URBAN
44200549	CLASS A PATCHES, TYPE I, 10 INCH	SQ YD	38	28	10
44200553	CLASS A PATCHES, TYPE II, 10 INCH	SQ YD	2,200	1,589	611
44200557	CLASS A PATCHES, TYPE III, 10 INCH	SQ YD	690	498	192
44200559	CLASS A PATCHES, TYPE IV, 10 INCH	SQ YD	2,120	1,531	589
44213000	PATCHING REINFORCEMENT	SQ YD	5,047	3,645	1402
44213200	SAW CUTS	FOOT	17,004	12,279	4725
67100100	MOBILIZATION	L SUM	1	0.72	0.28
70100205	TRAFFIC CONTROL AND PROTECTION, STANDARD 701401	EACH	10	7	3
70100420	TRAFFIC CONTROL AND PROTECTION, STANDARD 701411	EACH	30	19	11
70100825	TRAFFIC CONTROL AND PROTECTION, STANDARD 701456	L SUM	1	0.72	0.28
70103815	TRAFFIC CONTROL SURVEILLANCE	CAL DA	110	80	30
70300100	SHORT TERM PAVEMENT MARKING	FOOT	159	115	44
70300150	SHORT TERM PAVEMENT MARKING REMOVAL	SQ FT	53	38	15
* 78004645	PREFORMED PLASTIC PAVEMENT MARKING, TYPE D - STANDARD - LINE 9"	FOOT	437	312	125

\*SPECIALTY ITEM

MODEL: Default  
FILE NAME: c:\pwwork\carminna\05800047\06P50-Summary of Quantities.dgn

USER NAME = stephenie.carmin	DESIGNED -	REVISED -
	DRAWN -	REVISED -
PLOT SCALE = \$SCALE\$	CHECKED -	REVISED -
PLOT DATE = 7/1/2024	DATE -	REVISED -

**STATE OF ILLINOIS  
DEPARTMENT OF TRANSPORTATION**

SUMMARY OF QUANTITIES				
SCALE:	SHEET	OF	SHEETS	STA. TO STA.

F.A.I. RTE.	SECTION	COUNTY	TOTAL SHEETS	SHEET NO.
39	D3 PATCHING 2025-1	LASALLE	13	3
CONTRACT NO. 66P50				
ILLINOIS FED. AID PROJECT				

CODE NO.	ITEM	UNIT	TOTAL QUANTITY	CONSTRUCTION CODE	
				ROADWAY 0006	ROADWAY 0006
				RURAL	URBAN
* 78005110	EPOXY PAVEMENT MARKING - LINE 4"	FOOT	3495	2499	996
* 78005140	EPOXY PAVEMENT MARKING - LINE 8"	FOOT	181	68	113
* 78011050	GROOVING FOR RECESSED PAVEMENT MARKING 10"	FOOT	749	312	437
* 78100100	RAISED REFLECTIVE PAVEMENT MARKER	EACH	44	32	12
X7010238	CHANGEABLE MESSAGE SIGN (SPECIAL)	CAL MO	20	14	6
Z0018911	DRILL AND GROUT #6 TIE BARS	EACH	717	544	173
Z0018913	DRILL AND GROUT #8 TIE BARS	EACH	786	568	218

\*SPECIALTY ITEM

MODEL: Default  
FILE NAME: c:\pw\work\pwwork\carminna\05080047\06P50-Summary of Quantities.dgn

USER NAME = stephenie.carmin	DESIGNED -	REVISED -
	DRAWN -	REVISED -
PLOT SCALE = \$SCALE\$	CHECKED -	REVISED -
PLOT DATE = 7/1/2024	DATE -	REVISED -

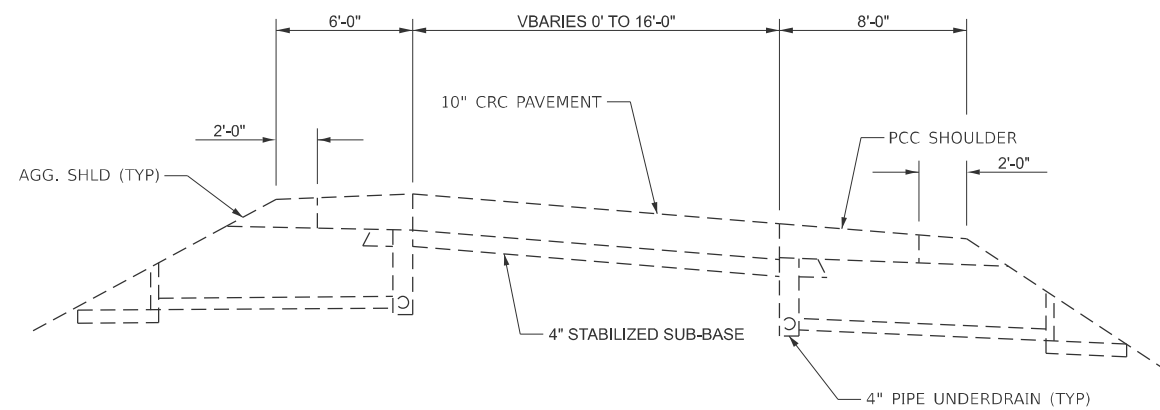
**STATE OF ILLINOIS  
DEPARTMENT OF TRANSPORTATION**

**SUMMARY OF QUANTITIES**

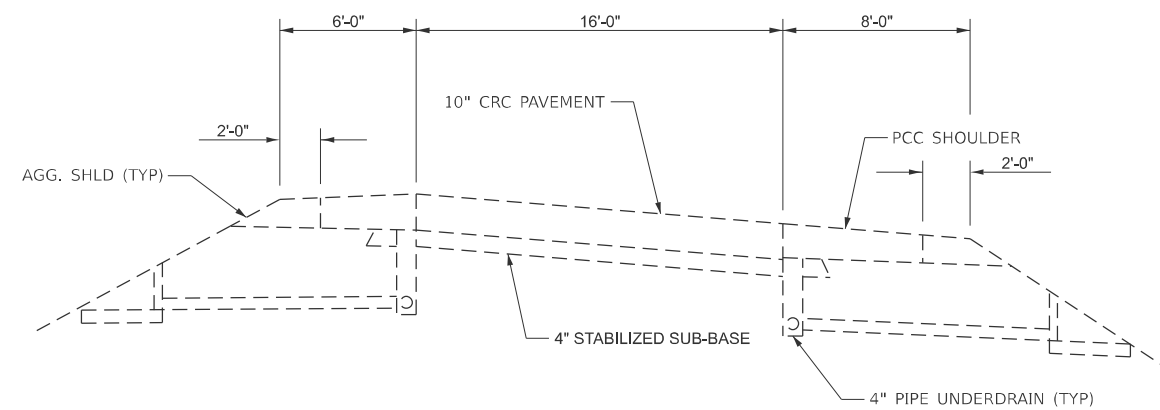
SCALE: SHEET OF SHEETS STA. TO STA.

F.A.I. RTE.	SECTION	COUNTY	TOTAL SHEETS	SHEET NO.
39	D3 PATCHING 2025-1	LASALLE	13	4
CONTRACT NO. 66P50			ILLINOIS FED. AID PROJECT	





**TYPICAL SECTION**  
**FAI ROUTE 39 (I-39)**  
**RAMP PAVEMENT ADJACENT TO MAINLINE**



**TYPICAL SECTION**  
**FAI ROUTE 39 (I-39)**  
**RAMP PAVEMENT**

MODEL: Default  
 FILE NAME: c:\p\work\pav\collauterbach\k0960847\0368P50 Typical Sections.dgn

USER NAME = kylie.lauterbach	DESIGNED -	REVISED -
	DRAWN -	REVISED -
	CHECKED -	REVISED -
PLOT DATE = 6/26/2024	DATE -	REVISED -

**STATE OF ILLINOIS**  
**DEPARTMENT OF TRANSPORTATION**

**TYPICAL SECTIONS**

SCALE: SHEET OF SHEETS STA. TO STA.

F.A.I. RTE.	SECTION	COUNTY	TOTAL SHEETS	SHEET NO.
39	D3 PATCHING 2025-1	LASALLE	13	6
CONTRACT NO. 66P50				
		ILLINOIS	FED. AID PROJECT	

PATCH SCHEDULE - RURAL										
LOCATION			CLASS A PATCHES				PATCH REINF	SAW CUTS	DRILL & GROUT TIE BARS #6	DRILL & GROUT TIE BARS #8
			TYPE I	TYPE II	TYPE III	TYPE IV				
			10 INCH							
MM	TO	MM	SQ YD	SQ YD	SQ YD	SQ YD	SQ YD	FOOT	EACH	EACH
40.3		51.43	12	670	210	646	1539	5182	323	240
59.78		71.53	14	708	222	682	1625	5473	171	253
73.33		76.82	3	210	66	203	482	1624	51	75
<b>RURAL TOTAL</b>			<b>28</b>	<b>1589</b>	<b>498</b>	<b>1531</b>	<b>3646</b>	<b>12279</b>	<b>544</b>	<b>568</b>

PATCH SCHEDULE - URBAN										
LOCATION			CLASS A PATCHES				PATCH REINF	SAW CUTS	DRILL & GROUT TIE BARS #6	DRILL & GROUT TIE BARS #8
			TYPE I	TYPE II	TYPE III	TYPE IV				
			10 INCH							
MM	TO	MM	SQ YD	SQ YD	SQ YD	SQ YD	SQ YD	FOOT	EACH	EACH
51.43		59.78	8	503	158	485	1154	3887	121	180
71.53		73.33	2	108	34	104	249	838	52	39
<b>URBAN TOTAL</b>			<b>10</b>	<b>611</b>	<b>192</b>	<b>589</b>	<b>1402</b>	<b>4725</b>	<b>173</b>	<b>218</b>

PAVEMENT MARK SCHEDULE - RURAL										
LOCATION			EPOXY PAVEMENT MARKING- LINE 4"		EPOXY PAVEMENT MARKING- LINE 8"	PREF PL PM TD STD L9 CONTRAST	GRV RCSD PVT MRKG 10	SHORT TERM PAVMENT MARKINGS	SHORT TERM PAVMENT MARKING REMOVAL	RAISED REFL PAVT MKR
			WHITE	YELLOW	WHITE					
MM	TO	MM	FOOT	FOOT	FOOT	FOOT	FOOT	EACH	FOOT	SQ FT
40.3		51.43	517.5	517.5	49.5	129	129	49	16	13
59.78		71.43	597	597	18	149	149	51	17	14
73.33		76.82	135	135		34	34	15	5	4
<b>RURAL TOTAL</b>			<b>2499</b>		<b>68</b>	<b>312</b>	<b>312</b>	<b>115</b>	<b>38</b>	<b>32</b>

PAVEMENT MARK SCHEDULE - URBAN										
LOCATION			EPOXY PAVEMENT MARKING- LINE 4"		EPOXY PAVEMENT MARKING- LINE 8"	PREF PL PM TD STD L9 CONTRAST	GRV RCSD PVT MRKG 10	SHORT TERM PAVMENT MARKINGS	SHORT TERM PAVMENT MARKING REMOVAL	RAISED REFL PAVT MKR
			WHITE	YELLOW	WHITE					
MM	TO	MM	FOOT	FOOT	FOOT	FOOT	FOOT	EACH	FOOT	SQ FT
51.43		59.78	439.5	439.5	95	110	110	37	12	10
71.53		73.33	58.5	58.5	18	15	15	8	3	2
<b>RURAL TOTAL</b>			<b>996</b>		<b>113</b>	<b>125</b>	<b>125</b>	<b>44</b>	<b>15</b>	<b>12</b>

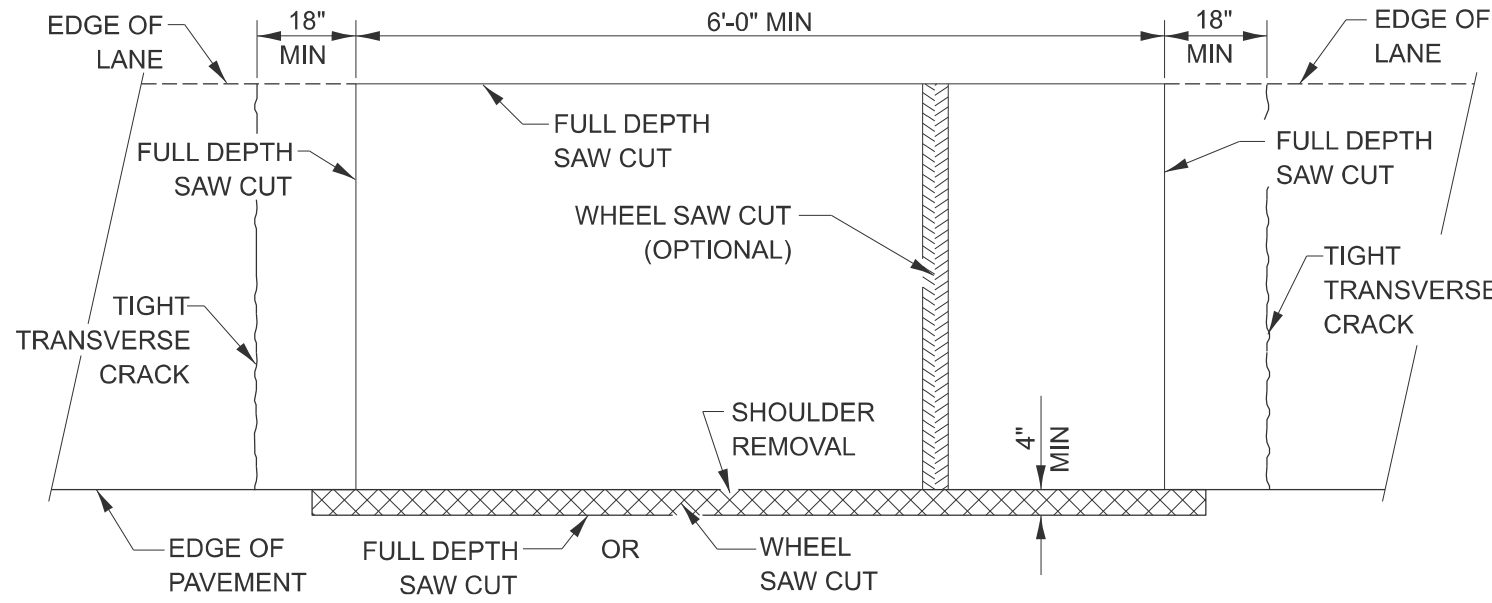
MODEL: Default  
FILE NAME: c:\pwworkspace\carminsa\0908047.66P50-Schedule of Quantities.dgn

USER NAME = stephenie.carmin	DESIGNED -	REVISED -
	DRAWN -	REVISED -
PLOT SCALE = \$SCALE\$	CHECKED -	REVISED -
PLOT DATE = 6/28/2024	DATE -	REVISED -

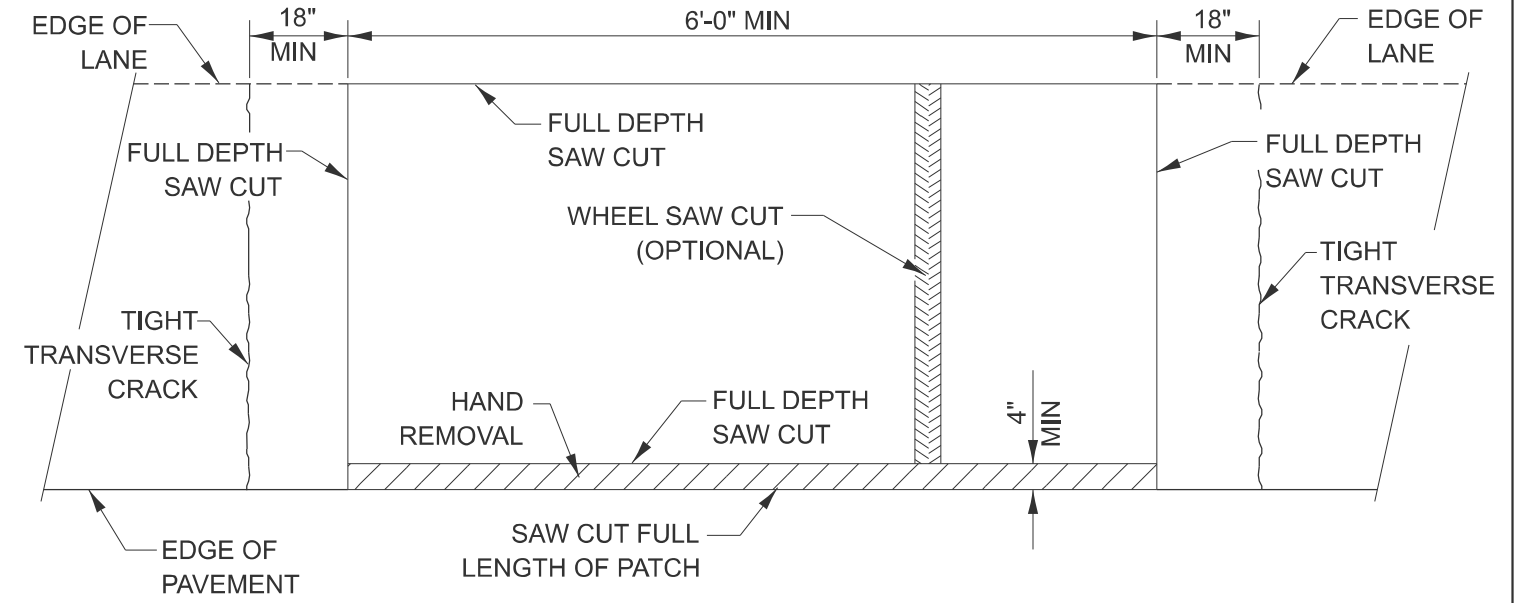
**STATE OF ILLINOIS  
DEPARTMENT OF TRANSPORTATION**

SCHEDULES			
SCALE:	SHEET	OF	SHEETS
	STA.		TO STA.

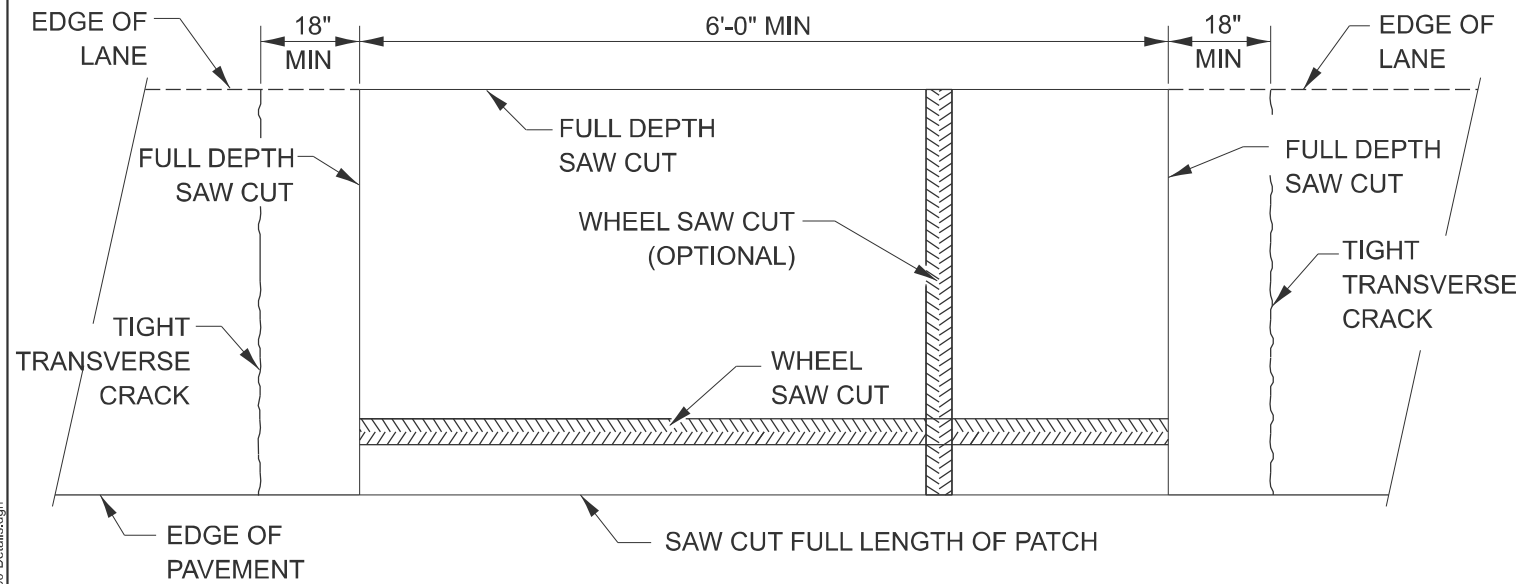
F.A.I. RTE.	SECTION	COUNTY	TOTAL SHEETS	SHEET NO.
39	D3 PATCHING 2025-1	LASALLE	13	7
CONTRACT NO. 66P50				
ILLINOIS FED. AID PROJECT				



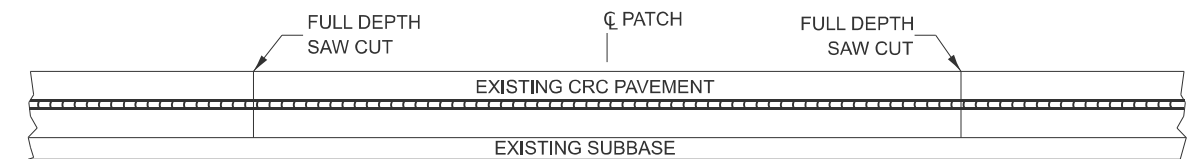
**PAVEMENT SAWING DETAIL**  
**(HMA SHOULDER)**



**PAVEMENT SAWING DETAIL**  
**(PCC SHOULDER)**



**ALTERNATE SAWING DETAIL**  
**(PCC SHOULDER)**



**EXISTING PAVEMENT WITHOUT HMA SURFACE**  
**PAVEMENT SAWING DETAIL FOR CLASS A PATCHING**  
**(CRC PAVEMENT)**

MODEL: Default  
 FILE NAME: c:\p\work\pav\detail\lauerbach\k0980847\0368P50-Details.dgn

USER NAME = kylie.lauterbach	DESIGNED -	REVISED -
	DRAWN -	REVISED -
	CHECKED -	REVISED -
PLOT DATE = 6/26/2024	DATE -	REVISED -

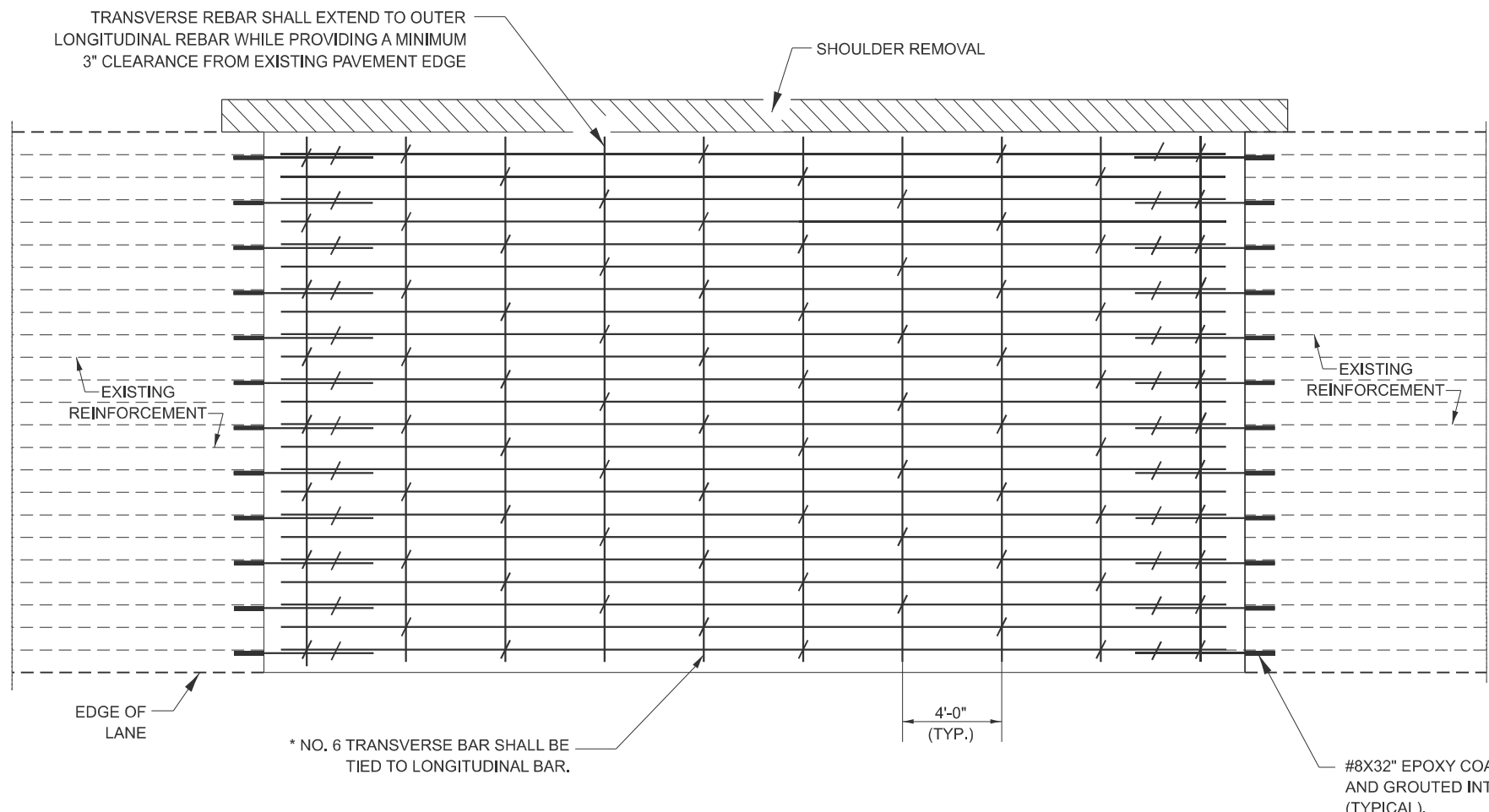
**STATE OF ILLINOIS**  
**DEPARTMENT OF TRANSPORTATION**

**CLASS A PATCHING DETAILS**

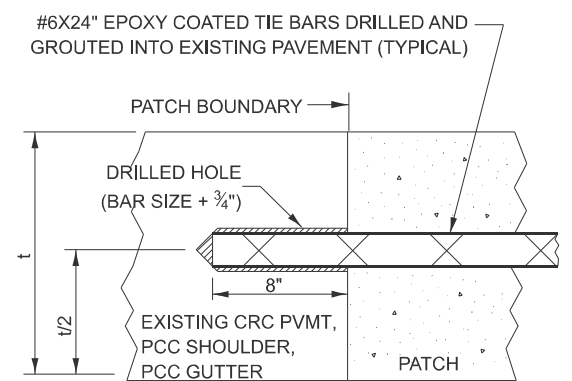
SCALE: SHEET OF SHEETS STA. TO STA.

F.A.I. RTE.	SECTION	COUNTY	TOTAL SHEETS	SHEET NO.
39	D3 PAVEMENT PATCHING	LASALLE	15	8
CONTRACT NO. 66P50				
ILLINOIS FED. AID PROJECT				



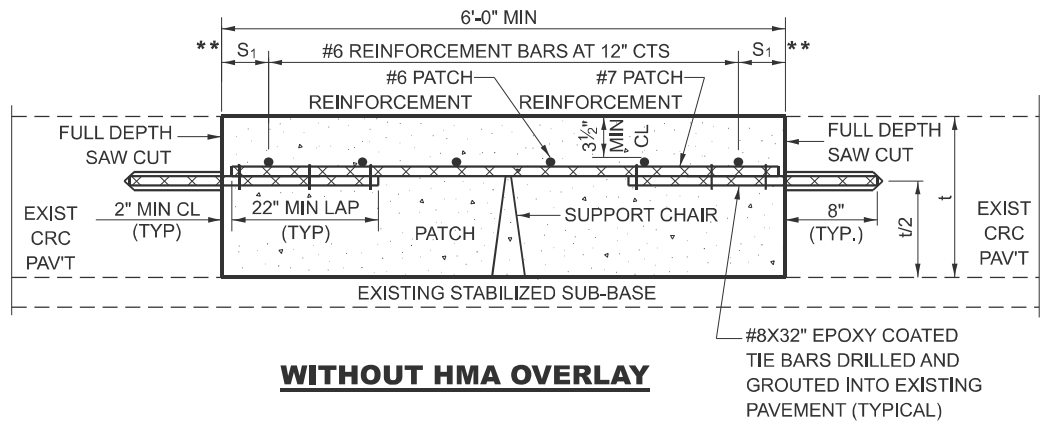


**PAVEMENT REINFORCEMENT DETAIL**



**LONGITUDINAL CONSTRUCTION JOINT**

PATCHES MORE THAN 20' IN LENGTH SHALL BE TIED TO ADJACENT PAVEMENT, PCC SHOULDERS OR PCC CURB AND GUTTER WITH #6x24" EPOXY COATED TIE BARS AT 36" CENTERS.



**WITHOUT HMA OVERLAY**

**NOTES:**  
 EXISTING LONGITUDINAL REINFORCEMENT:  
 22 - #7 BARS AT 6 1/2" SPACING.

SPACING OF NEW LONGITUDINAL REINFORCEMENT SHALL MATCH THE SPACING OF EXISTING REINFORCEMENT AND SHALL BE TIED TOGETHER WITH A MINIMUM OF TWO TIES PER BAR.

TRANSVERSE CONSTRUCTION JOINTS: #8 X 32" EPOXY COATED TIE BAR SHALL BE DRILLED AND GROUTED INTO THE EXISTING PCC PAVEMENT AT A SPACING OF ± TWICE THE SPACING OF EXISTING LONGITUDINAL REINFORCEMENT BARS AND SHALL BE TIED TO PROPOSED LONGITUDINAL REINFORCEMENT WITH A MINIMUM OF TWO TIES PER BAR WHEN PRACTICAL.

\* EVERY THIRD INTERSECTION MUST BE TIED. WHEN THE MINIMUM CLEARANCE CANNOT BE OBTAINED WITH THE TRANSVERSE REBAR ON TOP, THEN THE TRANSVERSE REBAR SHALL BE TIED TO THE BOTTOM OF THE LONGITUDINAL REBAR.

\*\* VARIABLE: WHERE S<sub>1</sub> IS 2 1/2" MIN. AND 12" MAX.

MODEL: Default  
 FILE NAME: c:\p\work\pav\detail\cammins\09080647\03686P50-Details.dgn

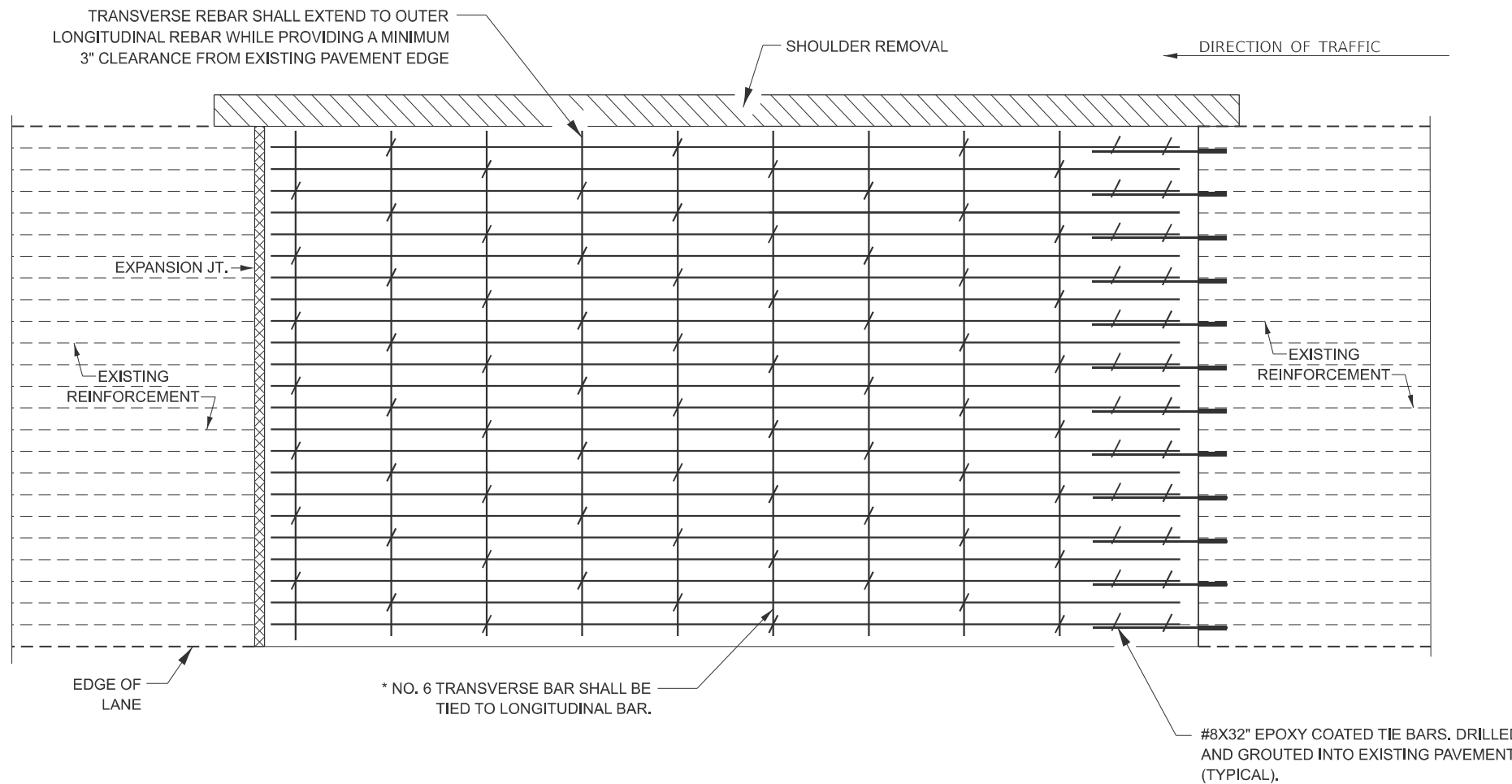
USER NAME = kylie.lauterbach	DESIGNED -	REVISED -
	DRAWN -	REVISED -
	CHECKED -	REVISED -
PLOT DATE = 6/26/2024	DATE -	REVISED -

**STATE OF ILLINOIS  
 DEPARTMENT OF TRANSPORTATION**

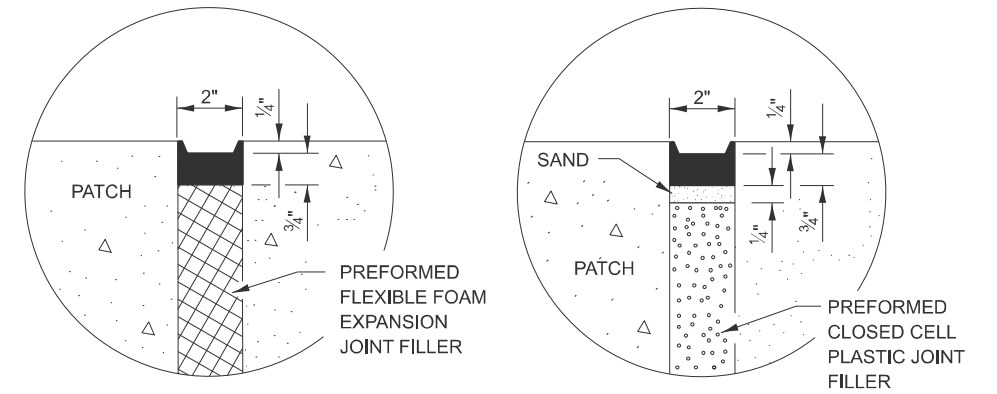
**CLASS A PATCHING DETAILS**

SCALE: SHEET OF SHEETS STA. TO STA.

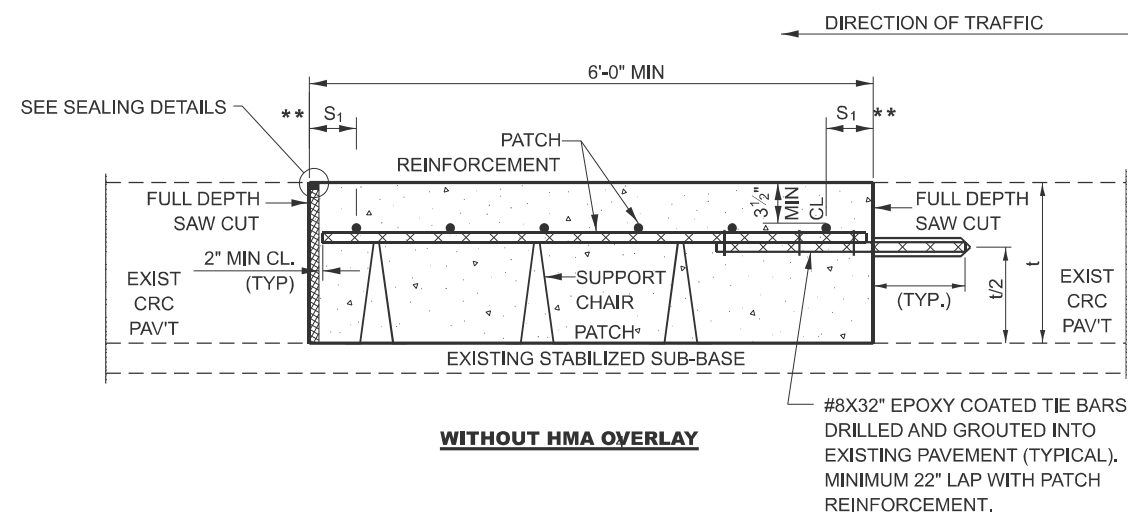
F.A.I. RTE.	SECTION	COUNTY	TOTAL SHEETS	SHEET NO.
39	D3 PAVEMENT PATCHING	LASALLE	13	9
CONTRACT NO. 66P50				
ILLINOIS FED. AID PROJECT				



**PAVEMENT REINFORCEMENT DETAIL**



**SEALING DETAILS**



**CLASS A PATCH WITH EXPANSION JOINT**

MODEL: Default  
FILE NAME: c:\p\work\pav\colla\lauerbach\kld0908047D368P50-Details.dgn

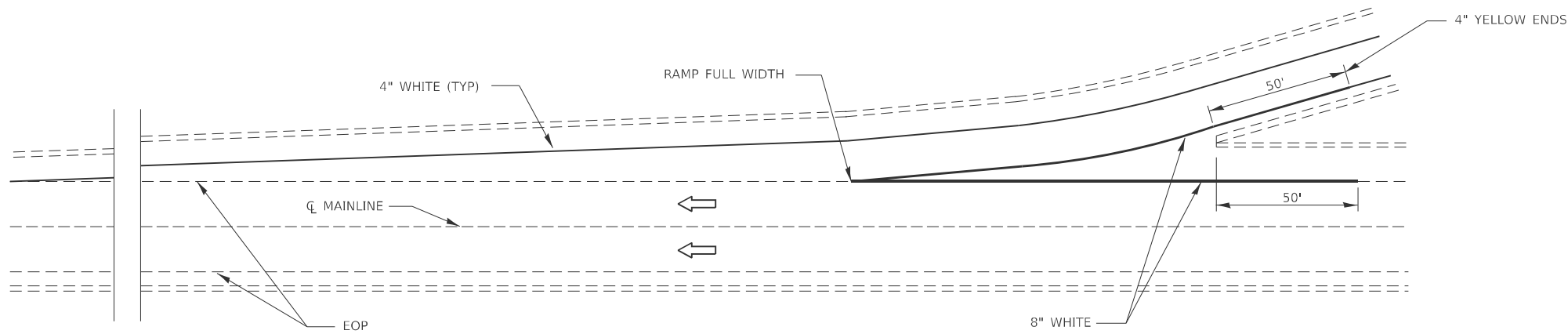
USER NAME = kylie.lauterbach	DESIGNED -	REVISED -
	DRAWN -	REVISED -
	CHECKED -	REVISED -
PLOT DATE = 6/26/2024	DATE -	REVISED -

**STATE OF ILLINOIS  
DEPARTMENT OF TRANSPORTATION**

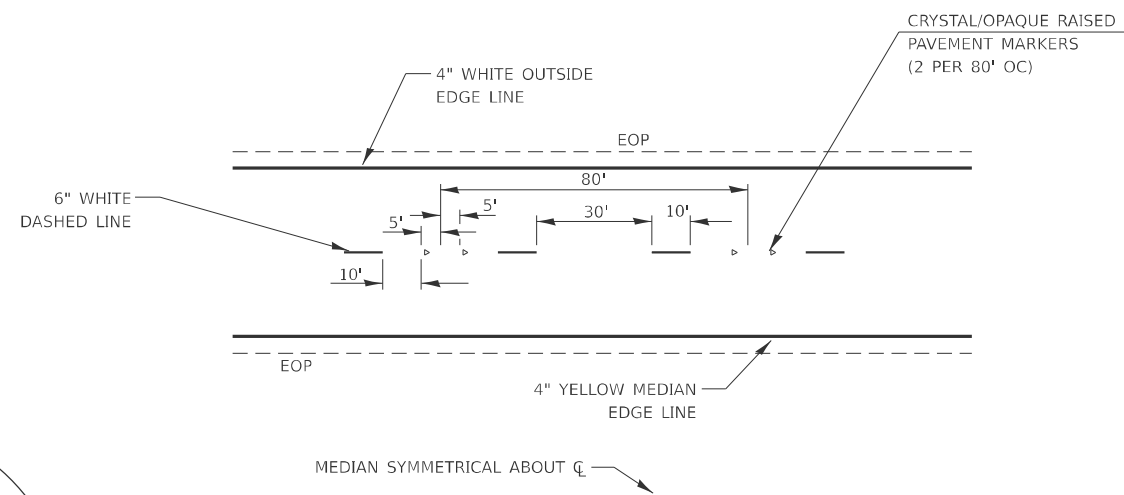
**CLASS A PATCHING DETAILS**

SCALE: SHEET OF SHEETS STA. TO STA.

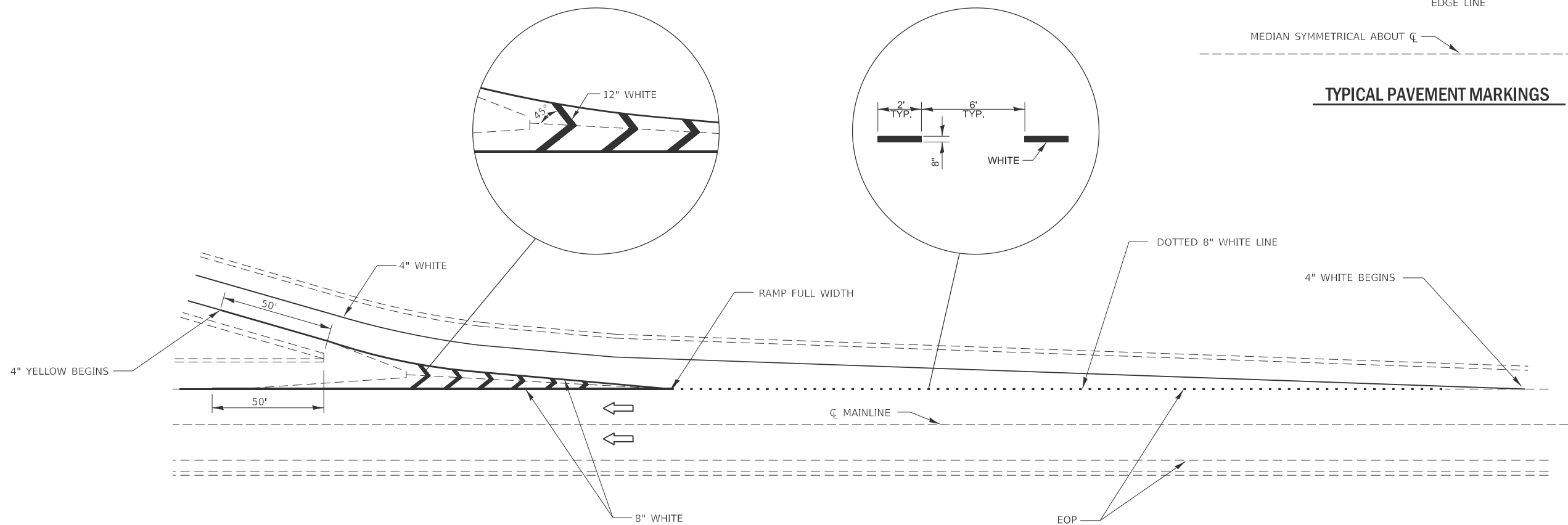
F.A.I. RTE.	SECTION	COUNTY	TOTAL SHEETS	SHEET NO.
39	D3 PAVEMENT PATCHING	LASALLE	13	10
CONTRACT NO. 66P50				
ILLINOIS FED. AID PROJECT				



**TYPICAL PAVEMENT MARKING FOR ENTRANCE RAMP TERMINALS**



**TYPICAL PAVEMENT MARKINGS**



**TYPICAL PAVEMENT MARKINGS FOR EXIT RAMP TERMINALS**

MODEL: Default  
 FILE NAME: c:\pwworkspace\lauerbach\k0980847\0368P50-Details.dgn

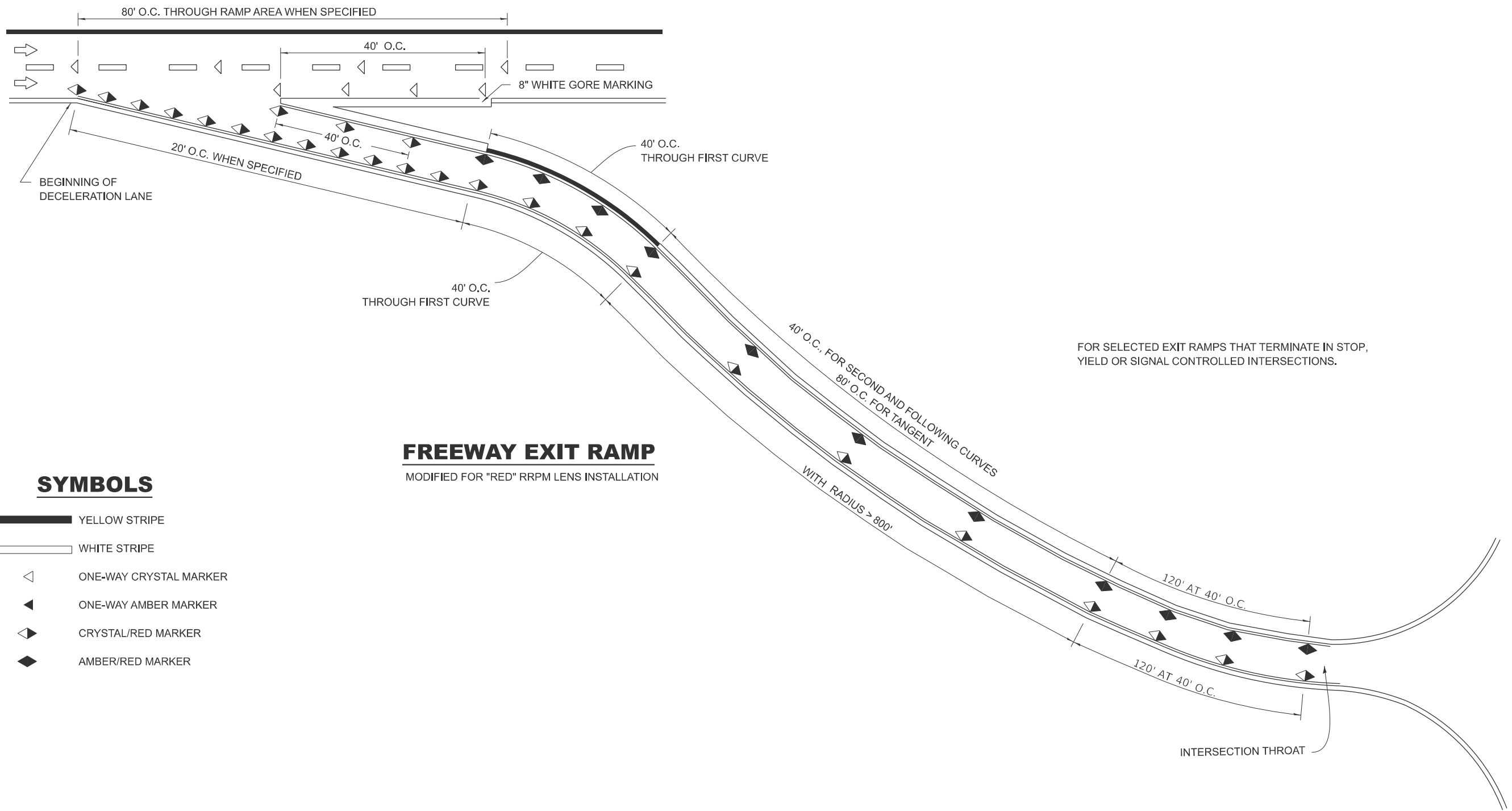
USER NAME = kylie.lauterbach	DESIGNED -	REVISED -
	DRAWN -	REVISED -
	CHECKED -	REVISED -
PLOT DATE = 6/26/2024	DATE -	REVISED -

**STATE OF ILLINOIS  
DEPARTMENT OF TRANSPORTATION**

**DETAILS**

SCALE: SHEET OF SHEETS STA. TO STA.

F.A.I. RTE.	SECTION	COUNTY	TOTAL SHEETS	SHEET NO.
39	D3 PAVEMENT PATCHING	LASALLE	13	11
CONTRACT NO. 66P50				
ILLINOIS FED. AID PROJECT				



FOR SELECTED EXIT RAMP THAT TERMINATE IN STOP, YIELD OR SIGNAL CONTROLLED INTERSECTIONS.

### FREEWAY EXIT RAMP

MODIFIED FOR "RED" RRPM LENS INSTALLATION

### SYMBOLS

- YELLOW STRIPE
- WHITE STRIPE
- ONE-WAY CRYSTAL MARKER
- ONE-WAY AMBER MARKER
- CRYSTAL/RED MARKER
- AMBER/RED MARKER

MODEL: Default  
FILE NAME: c:\p\work\pav\coll\lauerbach\kld0960847\D368P50-Details.dgn

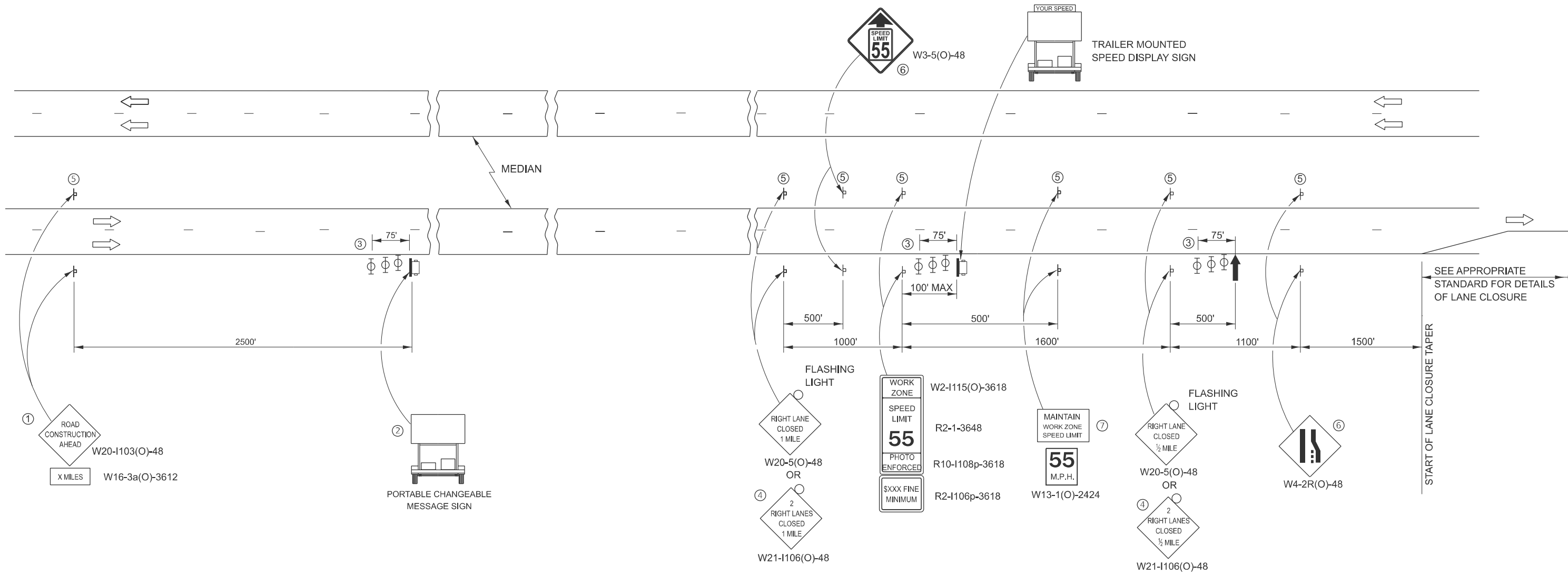
USER NAME = kylie.lauerbach	DESIGNED -	REVISED -
	DRAWN -	REVISED -
	CHECKED -	REVISED -
PLOT DATE = 6/26/2024	DATE -	REVISED -

**STATE OF ILLINOIS  
DEPARTMENT OF TRANSPORTATION**

**DETAILS**

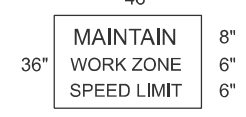
SCALE: SHEET OF SHEETS STA. TO STA.

F.A.I. RTE.	SECTION	COUNTY	TOTAL SHEETS	SHEET NO.
39	D3 PAVEMENT PATCHING	LASALLE	13	12
CONTRACT NO. 66P50				
		ILLINOIS	FED. AID PROJECT	



- ① THE ROAD CONSTRUCTION AHEAD SIGN SHALL BE LOCATED 3 MILES IN ADVANCE OF THE PROJECT LIMITS.
- ② THE MESSAGE BOARD SHALL BE USED TO DISPLAY STATUS OF LANES WITHIN THE PROJECT. THE PRIMARY MESSAGES SHALL BE:  
 "RIGHT LANE CLOSED" / " x MILES AHEAD"  
 "LEFT LANE CLOSED" / " x MILES AHEAD"  
 "ALL LANES OPEN"
- ③ THREE, TYPE II BARRICADES, DRUMS, OR VERTICAL BARRICADES AT 25' CENTERS.
- ④ THIS SIGN SHALL BE USED WHEN 2 LANES ARE CLOSED.
- ⑤ THIS SIGN SHALL BE OMITTED WHEN THE MEDIAN WIDTH IS LESS THAN 10'.
- ⑥ THIS SIGN SHALL ONLY BE USED IF THE EXISTING SPEED LIMIT IS GREATER THAN 65 MPH.

⑦ 48"x36" FLUORESCENT ORANGE SIGN WITH BLACK LETTERS.



"MAINTAIN WORK ZONE SPEED LIMIT" SIGN SHALL NOT BE PAID FOR SEPARATELY BUT SHALL BE INCLUDED IN THIS TRAFFIC CONTROL STANDARD.

**SYMBOLS**

- ↑ ARROW BOARD
- ☐ PORTABLE CHANGEABLE MESSAGE SIGN
- ⊥ SIGN
- ⊕ TYPE II BARRICADE, DRUM, OR VERTICAL BARRICADE WITH MONODIRECTIONAL FLASHING LIGHT

**GENERAL NOTE:**

THIS STANDARD IS USED WHERE AT ANY TIME A LANE IS CLOSED ON A FREEWAY/EXPRESSWAY.

WHEN THE LEFT LANE IS CLOSED, LEFT LANE CLOSED SIGNS SHALL BE SUBSTITUTED FOR THE RIGHT LANE CLOSED SIGNS.

THE FIRST THREE SIGNS AND THE MESSAGE BOARD ARE STATIONARY. THE OTHER SIGNS AND ARROWBOARDS SHALL BE MOVED AS NECESSARY TO MAINTAIN THE REQUIRED DISTANCE FROM THE START OF THE LANE CLOSURE TAPER(S).

MODEL: Default  
FILE NAME: c:\pwworkspace\lauerbach\kd096847D368P50-Details.dgn

USER NAME = kylie.lauterbach	DESIGNED -	REVISED -
	DRAWN -	REVISED -
	CHECKED -	REVISED -
PLOT DATE = 6/26/2024	DATE -	REVISED -

STATE OF ILLINOIS  
DEPARTMENT OF TRANSPORTATION

TRAFFIC CONTROL AND PROTECTION, STANDARD 701400

SCALE: SHEET OF SHEETS STA. TO STA.

F.A.I. RTE.	SECTION	COUNTY	TOTAL SHEETS	SHEET NO.
39	D3 PAVEMENT PATCHING	LASALLE	13	13
CONTRACT NO. 66P50				
ILLINOIS FED. AID PROJECT				