

STATE OF ILLINOIS  
DEPARTMENT OF TRANSPORTATION

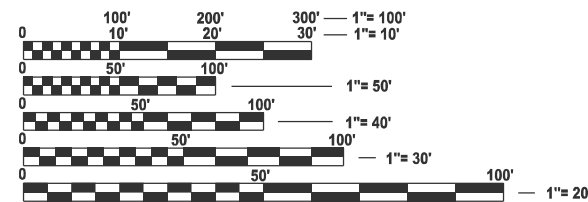
F.A. RTE.	SECTION	COUNTY	TOTAL SHEETS	SHEET NO.
	2025-01 TREE REMOVAL	VARIOUS	9	1
		ILLINOIS	CONTRACT NO. 66P72	

**INDEX**

- 1 COVER
- 2 GENERAL NOTES
- 3 SUMMARY OF QUANTITIES
- 4-9 SCHEDULES

**LIST OF ILLINOIS DOT HIGHWAY STANDARDS**

000001-08	STANDARD SYMBOLS, ABBREVIATIONS AND PATTERNS
001001-02	AREAS OF REINFORCEMENT BARS
001006	DECIMAL OF AN INCH AND OF A FOOT
701001-02	OFF-ROAD OPERATIONS 2L, 2W, MORE THAN 15' AWAY
701006-05	OFF-ROAD OPERATIONS 2L, 2W, 15' TO 24" FROM PAVEMENT EDGE
701101-05	OFF-ROAD OPERATIONS, MULTILANE, 15' TO 24" FROM PAVEMENT EDGE
701106-02	OFF-ROAD OPERATIONS, MULTILANE, MORE THAN 15' AWAY
701201-05	LANE CLOSURE, 2L, 2W, DAY ONLY, FOR SPEEDS ≥ 45 MPH
701301-04	LANE CLOSURE, 2L, 2W, SHORT TIME OPERATIONS
701400-12	APPROACH TO LANE CLOSURE, FREEWAY/EXPRESSWAY
701406-13	LANE CLOSURE, FREEWAY/EXPRESSWAY, DAY OPERATIONS ONLY
701501-06	URBAN LANE CLOSURE, 2L, 2W, UNDIVIDED
701606-10	URBAN LANE CLOSURE, MULTILANE, 2W WITH MOUNTABLE MEDIAN
701901-09	TRAFFIC CONTROL DEVICES
701311-03	LANE CLOSURE 2L, 2W, MOVING OPERATIONS-DAY ONLY
701502-09	URBAN LANE CLOSURE, 2L, 2W, WITH BIDIRECTIONAL LEFT TURN LANE
701601-09	URBAN LANE CLOSURE, MULTILANE, 1W OR 2W WITH NONTRAVERSABLE MEDIAN
701602-10	URBAN LANE CLOSURE, MULTILANE, 2W WITH BIDIRECTIONAL LEFT TURN LANE
701701-10	URBAN LANE CLOSURE, MULTILANE INTERSECTION



FULL SIZE PLANS HAVE BEEN PREPARED USING STANDARD ENGINEERING SCALES. REDUCED SIZED PLANS WILL NOT CONFORM TO STANDARD SCALES. IN MAKING MEASUREMENTS ON REDUCED PLANS, THE ABOVE SCALES MAY BE USED.

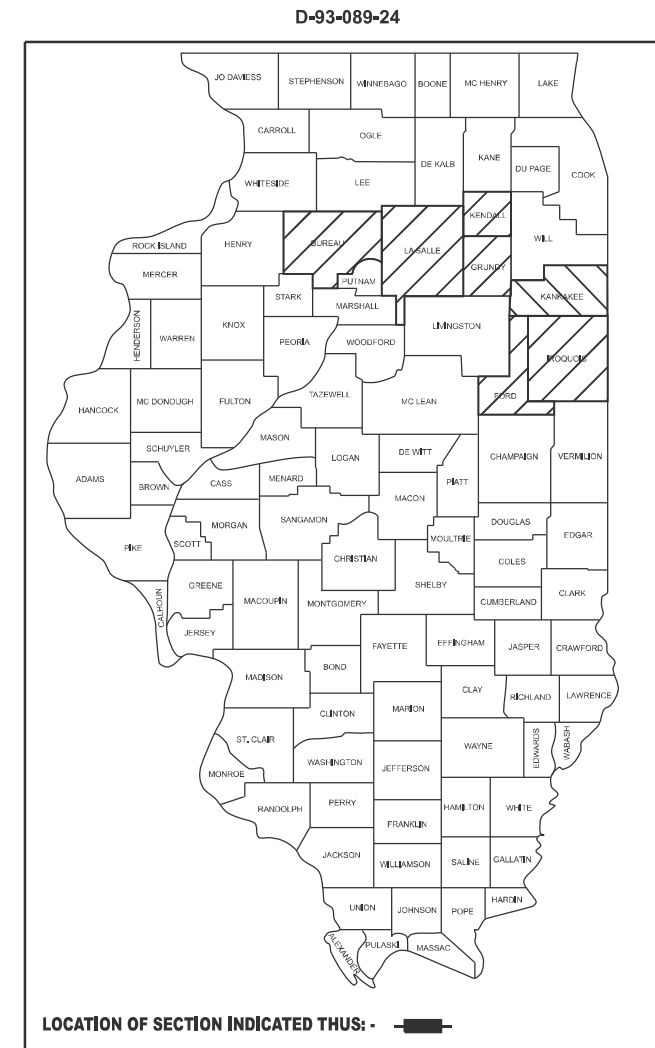
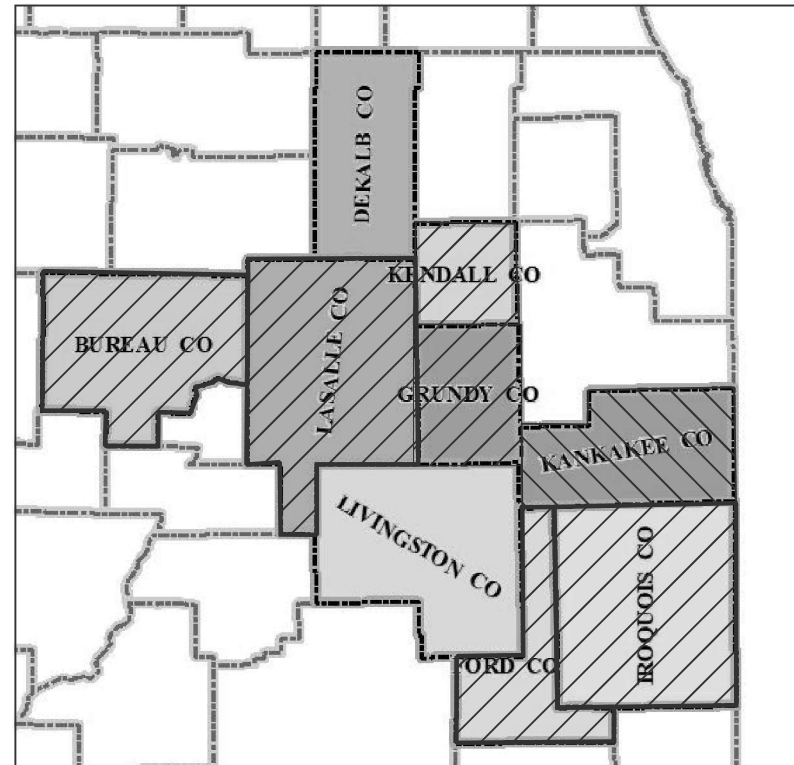
J.U.L.I.E.  
JOINT UTILITY LOCATION INFORMATION FOR EXCAVATION  
1-800-892-0123  
OR 811

**PROJECT ENGINEER: JOSEPH E. KANNEL, P.E.**  
**UNIT CHIEF: MOHAMED YOUSIF**  
**DISTRICT 3 NO. (815) 434-6131**  
**CONTRACT NO. 66P72**

**PROPOSED  
HIGHWAY PLANS**

**VARIOUS ROUTES  
SECTION 2025-01 TREE REMOVAL  
PROJECT  
VEGETATION CONTROL - TREE REMOVAL  
VARIOUS COUNTIES**

C-93-128-24



STATE OF ILLINOIS  
DEPARTMENT OF TRANSPORTATION

SUBMITTED July 9, 2024

*Trisha Thompson*  
REGIONAL ENGINEER

August 16, 2024  
*Scott A. Elk*  
ENGINEER OF DESIGN AND ENVIRONMENT

August 16, 2024  
*James J. Gu*  
DIRECTOR OF HIGHWAYS PROJECT IMPLEMENTATION 13

**PRINTED BY THE AUTHORITY  
OF THE STATE OF ILLINOIS**

**GENERAL NOTES**

FOR STABILIZATION, ALL TYPE III BARRICADES WILL REQUIRE A MINIMUM OF FOUR SAND BAGS PER BARRICADE.

SEEDING WILL NOT BE PERMITTED AT ANY TIME WHEN THE GROUND IS FROZEN, WET, OR IN AN UNTILLABLE CONDITION. LOCATIONS TO BE SEEDED WILL BE DETERMINED BY THE ENGINEER.

ONLY THOSE TREES ADDED AND DESIGNATED BY THE ENGINEER SHALL BE REMOVED. THE CONTRACTOR SHALL PROTECT ALL DESIRABLE TREES AND SHRUBS FROM DAMAGE DUE TO HIS OPERATIONS. CONSULT ENGINEER IF THERE IS A DESIRABLE TREE IN QUESTION.

THE FINISHED SOIL SHALL HAVE A VEGETATION SUSTAINING SOIL COVERING THE TOP FOUR INCHES ( 100 MILLIMETERS) IN AREAS TO BE SEEDED OR SODDED. THE VEGETATION SUSTAINING SOIL REQUIRED WILL NOT BE PAID FOR SEPARATELY BUT WILL BE INCLUDED IN THE COST OF THE TREE REMOVAL PAY ITEMS.

ALL EXCAVATED MATERIAL, WHICH INCLUDES DIGGING OR GRADING OF ANY SOIL OR FILL MATERIAL, WITH THE EXCEPTION OF AGGREGATE FILLS, MUST BE INCORPORATED WITHIN THE IDOT RIGHT OF WAY DUE TO ENVIRONMENTAL DOCUMENTATION REQUIREMENTS.

ANY REFERENCE TO A STANDARD IN THESE PLANS SHALL BE INTERPRETED TO MEAN THE EDITION AS INDICATED BY THE SUBNUMBER SHOWN IN THE LIST OF STANDARDS OR THE COPY INCLUDED IN THESE PLANS.

THE CONTRACTOR'S ATTENTION IS DIRECTED TO THE PRESENCE OF DEPARTMENT-OWNED UNDERGROUND UTILITIES WITHIN THE LIMITS OF THE PROPOSED IMPROVEMENT. THE CONTRACTOR SHALL REQUEST THE ILLINOIS DEPARTMENT OF TRANSPORTATION, BUREAU OF OPERATIONS IN OTTAWA (815-434-8505 OR 815-434-8506) TO LOCATE THE UNDERGROUND FACILITIES, PROVIDING A MINIMUM OF 72 HOURS NOTICE. THE DEPARTMENT IS NOT A MEMBER OF THE JOINT UTILITY LOCATING INFORMATION FOR EXCAVATORS (JULIE) SYSTEM

ALL DAMAGE TO DEPARTMENT OWNED UNDERGROUND FACILITIES, CAUSED BY THE CONTRACTOR SHALL BE REPAIRED TO THE SATISFACTION OF THE DEPARTMENT AT THE CONTRACTOR'S EXPENSE. THIS SHALL INCLUDE ALL TEMPORARY REPAIRS REQUIRED TO KEEP THE FACILITY OPERATIONAL WHILE MATERIAL IS BEING OBTAINED TO MAKE PERMANENT REPAIRS. SPLICING OF ELECTRIC CABLE SHALL NOT BE ALLOWED. ELECTRIC CABLE SHALL BE REPLACED FROM POLE TO POLE OR CONTROLLER.

THE CONTRACTOR SHALL CONTACT JULIE AT LEAST 48 HOURS PRIOR TO EXCAVATION TO DETERMINE WHICH UTILITIES ARE IN THE AREA.

NO TREE REMOVAL OVER THREE INCH DIAMETER SHALL OCCUR FROM APRIL 1ST TO SEPTEMBER 30TH DUE TO BATS.

UTILITY ADJUSTMENTS OR RELOCATIONS SHOULD NOT BE REQUIRED BY THIS PROJECT. THE ILLINOIS UNDERGROUND UTILITY FACILITIES DAMAGE PREVENTION ACT REQUIRES PERSONS EXCAVATING TO CONTACT THE ONE CALL SYSTEM (J.U.L.I.E: (800)-0123 or 8-1-1) BEFORE DIGGING

**COMMITMENTS**

NONE

STATE OF ILLINOIS  
DEPARTMENT OF TRANSPORTATION  
DISTRICT THREE  
AS BUILT INFORMATION

\_\_\_\_\_  
SUPERVISING CONSTRUCTION FIELD ENGINEER

\_\_\_\_\_  
RESIDENT ENGINEER / TECHNICIAN

START & END DATES  
OF CONSTRUCTION:

INSPECTORS:

\_\_\_\_\_  
\_\_\_\_\_  
\_\_\_\_\_

MODEL: D:\data\...  
FILE NAME: ...

USER NAME = Mohamed.Yousif	DESIGNED -	REVISED -
	DRAWN -	REVISED -
PLOT SCALE = \$SCALE\$	CHECKED -	REVISED -
PLOT DATE = 7/2/2024	DATE -	REVISED -

**STATE OF ILLINOIS  
DEPARTMENT OF TRANSPORTATION**

**GENERAL NOTES**

SCALE: SHEET OF SHEETS STA. TO STA.

F.A. RTE.	SECTION	COUNTY	TOTAL SHEETS	SHEET NO.
*	2025-01 TREE REMOVAL	VARIOUS	9	2
* VARIOUS			CONTRACT NO. 66P72	
		ILLINOIS	FED. AID PROJECT	

CODE NO.	ITEM	UNIT	TOTAL QUANTITY	100% STATE
				ROADWAY
				0031 NONE
20100110	TREE REMOVAL (6 TO 15 UNITS DIAMETER)	UNIT	636	636
20100210	TREE REMOVAL (OVER 15 UNITS DIAMETER)	UNIT	2455	2455
67100100	MOBILIZATION	L SUM	1	1

MODEL: D:\draft  
 FILE NAME: I:\p\illinois\p\illinois\com\PM\DOT\Documents\DOT Office\District 3\ORD Project\66P72\CAD\66P72-500.dgn

USER NAME = Mohamed.Yousif	DESIGNED -	REVISED -
	DRAWN -	REVISED -
PLOT SCALE = \$\$SCALE\$	CHECKED -	REVISED -
PLOT DATE = 7/3/2024	DATE -	REVISED -

**STATE OF ILLINOIS  
DEPARTMENT OF TRANSPORTATION**

**SUMMARY OF QUANTITIES**

SCALE: SHEET OF SHEETS STA. TO STA.

F.A. RTE.	SECTION	COUNTY	TOTAL SHEETS	SHEET NO.
*	2025-01 TREE REMOVAL	VARIOUS	9	3
* VARIOUS		CONTRACT NO. 66P72		
		ILLINOIS	FED. AID PROJECT	

Interstate 80 (I-80)						BUREAU COUNTY
NUMBER AND DIRECTION	NUMBER OF TREES/SIZE	TREE REM DIA 6 TO 15	TREE REM DIA OVER 15	GENERAL TYPE OF TREE	GIS PIN	REMARKS/NOTES
		UNIT	UNIT	SPECIES	LAT/LONG	LANDSCAPE YARD - 370
Great Sauk Trail Rest Area Grounds						
1	WB	1	30	Silver Maple	41.393878216101605, -89.55931713335698	Just West of the Building, East of the Playground
2	WB	1	61	Silver Maple	41.39407741806235, -89.5594069873532	West of the Building, North of the Playground
TOTALS			91			

US 6/US 34						BUREAU COUNTY
NUMBER AND DIRECTION	NUMBER OF TREES/SIZE	TREE REM DIA 6 TO 15	TREE REM DIA OVER 15	GENERAL TYPE OF TREE	GIS PIN	REMARKS/NOTES
		UNIT	UNIT	SPECIES	LAT/LONG	PRINCETON YARD - 345
US 6 / 34 Princeton Fairgrounds						
1	WB	1	52		41.37169693963882, -89.48007728815278	Just East of S Fairgrounds Ave
2	WB	1	40		41.371708325927166, -89.47973210547859	Just East of S Fairgrounds Ave
Tiskilwa Spur - Princeton Address 2402 South Main Street						
3	SB	1	46		41.349610665979455, -89.46969775359724	South Edge of Princeton
TOTALS			138			

US 6						BUREAU COUNTY
NUMBER AND DIRECTION	NUMBER OF TREES/SIZE	TREE REM DIA 6 TO 15	TREE REM DIA OVER 15	GENERAL TYPE OF TREE	GIS PIN	REMARKS/NOTES
		UNIT	UNIT	SPECIES	LAT/LONG	LASALLE YARD - 344
NW Corner of US 6 and Old North Road						
1	WB	1	34	Cottonwood	41.32849, -89.17917	
2	WB	1	18	Cottonwood	41.32849, -89.17917	
3	WB	1	17	Cottonwood	41.32849, -89.17917	
4	WB	1	21	Cottonwood	41.32849, -89.17917	
5	WB	1	24	Cottonwood	41.32812, -89.17900	
6	WB	1	17	Cottonwood	41.32812, -89.17900	
7	WB	1	32	Cottonwood	41.32812, -89.17900	
TOTALS			163			

US 6/OAK STREET						BUREAU COUNTY
NUMBER AND DIRECTION	NUMBER OF TREES/SIZE	TREE REM DIA 6 TO 15	TREE REM DIA OVER 15	GENERAL TYPE OF TREE	GIS PIN	REMARKS/NOTES
		UNIT	UNIT	SPECIES	LAT/LONG	LASALLE YARD - 344
8	WB	1	23		41.32811, -89.17922	East of Spring Valley
9	EB	1	25		41.32683, -89.18334	East of Spring Valley
TOTALS			48			

IL 29/IL 89						BUREAU COUNTY
NUMBER AND DIRECTION	NUMBER OF TREES/SIZE	TREE REM DIA 6 TO 15	TREE REM DIA OVER 15	GENERAL TYPE OF TREE	GIS PIN	REMARKS/NOTES
		UNIT	UNIT	SPECIES	LAT/LONG	LADD YARD - 347
North of Ladd Rd						
1	SB	1	27	Dead Ash	41.333730227330875, -89.21814963150413	Near Power Line West End of Spring Valley
2	SB	1	27	Dead Ash	41.333730227330875, -89.21814963150413	Near Power Line West End of Spring Valley
TOTALS			54			

\* VARIOUS

MODEL: Default  
 FILE NAME: P:\bids\pct\hwy.com\FWIDOT\Documents\DOT Office\Delid.3.CRD\Project\38877\CADD\Drawings\66P72\Schedule.dgn

USER NAME = Mohamed.Youssif	DESIGNED -	REVISED -
	DRAWN -	REVISED -
PLOT SCALE = \$SCALE\$	CHECKED -	REVISED -
PLOT DATE = 6/27/2024	DATE -	REVISED -

**STATE OF ILLINOIS**  
**DEPARTMENT OF TRANSPORTATION**

**SCHEDULES**

SCALE: SHEET OF SHEETS STA. TO STA.

F.A. RTE.	SECTION	COUNTY	TOTAL SHEETS	SHEET NO.
*	2025-01 TREE REMOVAL	VARIOUS	9	4
CONTRACT NO. 66P72				
ILLINOIS FED. AID PROJECT				

IL 26							BUREAU COUNTY
NUMBER AND DIRECTION	NUMBER OF TREES/SIZE	TREE REM DIA 6 TO 15	TREE REM DIA OVER 15	GENERAL TYPE OF TREE	GIS PIN	REMARKS/NOTES	
		UNIT	UNIT	SPECIES			LAT/LONG
Between I-180 and IL 26/IL 29 (Hiawatha Pioneer Trail)							
1	SB	1	42	cottonwood	41.267470601457894, -89.37409249436038	Pike Road	
2	SB	1	39	cottonwood	41.26772473633768, -89.37426473826324	Pike Road	
3	SB	1	36	cottonwood	41.267734326313764, -89.37428387647469	Pike Road	
4	SB	1	25	cottonwood	41.269009780582905, -89.37508130195086	Pike Road	
5	SB	1	48	cottonwood	41.26955160135972, -89.37541303094898	Pike Road	
6	SB	1	55	cottonwood	41.270227672306454, -89.37587872742708	Pike Road	
7	SB	1	56	cottonwood	41.27303257282104, -89.37763944299931	Pike Road	
8	SB	1	46	cottonwood	41.27733798044308, -89.38028689571829	Pike Road	
9	SB	1	44	cottonwood	41.2776544023112, -89.38053569246688	Pike Road	
10	SB	1	42	cottonwood	41.27688731634635, -89.3800317195659	Pike Road	
TOTALS			433				

IL 40							BUREAU COUNTY
NUMBER AND DIRECTION	NUMBER OF TREES/SIZE	TREE REM DIA 6 TO 15	TREE REM DIA OVER 15	GENERAL TYPE OF TREE	GIS PIN	REMARKS/NOTES	
		UNIT	UNIT	SPECIES			LAT/LONG
IL 40 - Buda @ Address 202 IL 40							
1	SB	1	43	Oak	41.3282013978017, -89.6835286248412	Just North of West North St. Address 202 IL 40	
TOTALS			43				

US 52							KENDALL COUNTY
NUMBER AND DIRECTION	NUMBER OF TREES/SIZE	TREE REM DIA 6 TO 15	TREE REM DIA OVER 15	GENERAL TYPE OF TREE	GIS PIN	REMARKS/NOTES	
		UNIT	UNIT	SPECIES			LAT/LONG
US 52 West of Roods Road							
1	EB	2	36	Dead	41.486558957816804, -88.56027862755512	South side of US 52, Double Trunk (16 + 20)	
2	EB	1	26	Dead	41.48656599027061, -88.5603966447466	South side of US 52	
3	EB	1	12		41.486559700314345, -88.56046408490836	South side of US 52	
4	EB	1	20	Dead	41.486553170177, -88.56068067329176	South side of US 52	
5	EB	1	12	Dead	41.486553170177, -88.56068067329176	South side of US 52	
6	EB	1	20		41.4865577236142, -88.560837925996	South side of US 52	
7	EB	1	18		41.4865577236142, -88.560837925996	South side of US 52	
8	EB	1	24		41.4865577236142, -88.560837925996	South side of US 52	
9	EB	1	20		41.48656280481558, -88.56099148245536	South side of US 52	
10	EB	2	32		41.48655844464024, -88.56118457213184	South side of US 52, Double Trunk (16 + 16)	
11	EB	1	16		41.48655844464024, -88.56118457213184	South side of US 52	
12	EB	1	14		41.48655844464024, -88.56118457213184	South side of US 52	
13	EB	1	12		41.48655174636086, -88.56140325980562	South side of US 52	
14	EB	1	18		41.48655174636086, -88.56140325980562	South side of US 52	
15	EB	1	24		41.48655174636086, -88.56140325980562	South side of US 52	
16	EB	1	12		41.486553424448736, -88.56169269649706	South side of US 52	
17	EB	1	14		41.486553424448736, -88.56169269649706	South side of US 52	
18	EB	1	14		41.486553424448736, -88.56169269649706	South side of US 52	
19	EB	1	30	Dead	41.48672069619321, -88.56178053883846	North side of US 52	
TOTALS		90	284				

MODEL: Default  
 FILE NAME: I:\p001\skp\kennedy.com\FMDCOT\Documents\BDCOT Office\Default3\CORP Project\0388P72\CAD\Drawings\66P72\Schedules.dgn

USER NAME = Mohamed.Yousif	DESIGNED -	REVISED -
	DRAWN -	REVISED -
PLOT SCALE = \$\$CALE\$	CHECKED -	REVISED -
PLOT DATE = 6/27/2024	DATE -	REVISED -

**STATE OF ILLINOIS  
DEPARTMENT OF TRANSPORTATION**

**SCHEDULES**

SCALE: SHEET OF SHEETS STA. TO STA.

\* VARIOUS

F.A. RTE.	SECTION	COUNTY	TOTAL SHEETS	SHEET NO.
*	2025-01 TREE REMOVAL	VARIOUS	9	5
CONTRACT NO. 66P72				
		ILLINOIS	FED. AID PROJECT	

Interstate 80 (I-80)							GRUNDY COUNTY
NUMBER AND DIRECTION	NUMBER OF TREES/SIZE	TREE REM DIA 6 TO 15	TREE REM DIA OVER 15	GENERAL TYPE OF TREE	GIS PIN	REMARKS/NOTES	
		UNIT	UNIT	SPECIES	LAT/LONG	LANDSCAPE YARD - 370	
<b>Three Rivers Rest Area - West Bound</b>							
1	WB	1		27	Buckeye	41.447522622163966, -88.32728029753714	Too close to lift station enclosure
2	WB	2		56	Dying Oak	41.44724767033805, -88.32878264716898	NE side of playground, Double Trunk (28 + 28)
<b>Three Rivers Rest Area - East Bound</b>							
3	EB	1		29	Silver Maple	41.431043142487425, -88.34509462230336	East of Playground
4	EB	1		51	Silver Maple	41.43084275428713, -88.34534385061644	East of Playground
5	EB	1		32	Silver Maple	41.43075228346237, -88.34565735953515	East of Playground
6	EB	1		32	Silver Maple	41.43072269017458, -88.34578817620628	South of Playground
7	EB	1		23	Silver Maple	41.43071761703818, -88.34592575925694	South of Playground
8	EB	1		33	Silver Maple	41.430718462560925, -88.3460351490595	South of Playground
9	EB	1		40	Silver Maple	41.430694787919435, -88.34611634561398	South of Playground
10	EB	1	13		Sugar Maple	41.43079540508616, -88.34591786514746	In Playground
11	EB	1		16	Maple	41.43077342151682, -88.34609153555567	South of Playground
12	EB	1		19	Linden	41.4307810312132, -88.34626746144325	West of Playground
13	EB	1	11		Pine	41.43075735659451, -88.346433237742	West of Playground
14	EB	1	11		Pine	41.430689714779305, -88.34660352496043	West of Playground
15	EB	1		19	Coffee Tree	41.430789486431756, -88.34680764408388	West of Playground
16	EB	1		20	Locust	41.43086304678941, -88.34649526289508	North of Playground
17	EB	1		18	Locust	41.431056670784876, -88.34627310007788	North of Playground
18	EB	1		18	Locust	41.431054134229775, -88.34610732377912	North of Playground
19	EB	1		18	Locust	41.431069353558904, -88.34603289360416	North of Playground
20	EB	1		21	Coffee Tree	41.431014394853555, -88.34617949849421	North of Playground
21	EB	1	14		Locust	41.43117757979653, -88.34642083269783	Entry Ramp Island Between Truck Lot and Car Lot
22	EB	1	12		Locust	41.43117842531328, -88.34637459577098	Entry Ramp Island Between Truck Lot and Car Lot
23	EB	1		17	Locust	41.431191108063544, -88.34625843958887	Entry Ramp Island Between Truck Lot and Car Lot
24	EB	1	7		Crab	41.43118941703032, -88.34613890021699	Entry Ramp Island Between Truck Lot and Car Lot
25	EB	1	9		Crab	41.431216473556596, -88.34611296242875	Entry Ramp Island Between Truck Lot and Car Lot
26	EB	1	9		Crab	41.43122070113781, -88.34605544820263	Entry Ramp Island Between Truck Lot and Car Lot
<b>TOTALS</b>			<b>86</b>	<b>489</b>			

Interstate 57 (I-57)							IROQUOIS COUNTY
NUMBER AND DIRECTION	NUMBER OF TREES/SIZE	TREE REM DIA 6 TO 15	TREE REM DIA OVER 15	GENERAL TYPE OF TREE	GIS PIN	REMARKS/NOTES	
		UNIT	UNIT	SPECIES	LAT/LONG	LANDSCAPE YARD - 370	
<b>Main Line Station Rest Area (~Mile Marker 269)</b>							
1	SB	1		18	Silver Maple	40.561035537316435, -88.06171283692437	Off SW Corner of Building, West of Walkway; Partially Dead
<b>TOTALS</b>				<b>18</b>			

IL 49							IROQUOIS COUNTY
NUMBER AND DIRECTION	NUMBER OF TREES/SIZE	TREE REM DIA 6 TO 15	TREE REM DIA OVER 15	GENERAL TYPE OF TREE	GIS PIN	REMARKS/NOTES	
		UNIT	UNIT	SPECIES	LAT/LONG	WATSEKA YARD - 322	
<b>Between County Road 2600 N and Vermillion County Line</b>							
1	NB	1		44	Dead Elm	40.858417180138886, -87.86515918236078	200' North of 2400 N Rd (East Side)
2	NB	1		35	Dead Ash	40.487738343760036, -87.89748773693275	500' North of 0 N Rd (Vermillion County Line)
<b>TOTALS</b>				<b>79</b>			

\* VARIOUS

MODEL: D:\info\... FILE NAME: ...

USER NAME = Mohamed.Yousif	DESIGNED -	REVISED -
	DRAWN -	REVISED -
PLOT SCALE = SCALES	CHECKED -	REVISED -
PLOT DATE = 6/27/2024	DATE -	REVISED -

**STATE OF ILLINOIS  
DEPARTMENT OF TRANSPORTATION**

**SCHEDULES**

SCALE: SHEET OF SHEETS STA. TO STA.

F.A. RTE.	SECTION	COUNTY	TOTAL SHEETS	SHEET NO.
*	2025-01 TREE REMOVAL	VARIOUS	9	6
CONTRACT NO. 66P72				
		ILLINOIS	FED. AID PROJECT	

IL 116						FORD COUNTY	
NUMBER AND DIRECTION	NUMBER OF TREES/SIZE	TREE REM DIA 6 TO 15	TREE REM DIA OVER 15	GENERAL TYPE OF TREE	GIS PIN	REMARKS/NOTES	
		UNIT	UNIT	SPECIES	LAT/LONG	GIBSON CITY YARD - 336	
<b>N 1700 East Road to N 000 East Road</b>							
1	EB	1		21	Sycamore	40.88036 -88.14127	Behind Guardrail South Side of IL 116, Okay to Leave Stump
2	EB	1		16	Elm	40.88037 -88.13974	Behind Guardrail South Side of IL 116, Okay to Leave Stump
3	EB	1	11		Sycamore	40.88040 -88.13843	Behind Guardrail South Side of IL 116, Okay to Leave Stump
4	EB	1	9		Sycamore	40.88040 -88.13843	Behind Guardrail South Side of IL 116, Okay to Leave Stump
5	EB	1		21	Sycamore	40.88040 -88.13843	Behind Guardrail South Side of IL 116, Okay to Leave Stump
6	EB	1	9		Sycamore	40.88040 -88.13843	Behind Guardrail South Side of IL 116, Okay to Leave Stump
7	EB	1		21	Sycamore	40.88040 -88.13843	Behind Guardrail South Side of IL 116, Okay to Leave Stump
8	EB	1	11		Elm	40.88040 -88.13843	Behind Guardrail South Side of IL 116, Okay to Leave Stump
9	EB	1		16	Sycamore	40.88042 -88.1377	Behind Guardrail South Side of IL 116, Okay to Leave Stump
10	EB	1		16	Sycamore	40.88042 -88.1377	Behind Guardrail South Side of IL 116, Okay to Leave Stump
11	EB	1	9		Sycamore	40.88042 -88.1377	Behind Guardrail South Side of IL 116, Okay to Leave Stump
12	EB	1		21	Elm	40.88044 -88.13718	Behind Guardrail South Side of IL 116, Okay to Leave Stump
13	EB	1	9		Sycamore	40.88044 -88.13718	Behind Guardrail South Side of IL 116, Okay to Leave Stump
14	EB	1		21	Elm	40.88044 -88.13686	Behind Guardrail South Side of IL 116, Okay to Leave Stump
15	EB	1	9		Sycamore	40.88044 -88.13649	Behind Guardrail South Side of IL 116, Okay to Leave Stump
16	EB	1		21	Sycamore	40.88045 -88.13639	Behind Guardrail South Side of IL 116, Okay to Leave Stump
17	EB	1		21	Sycamore	40.88045 -88.13639	Behind Guardrail South Side of IL 116, Okay to Leave Stump
18	EB	1		16	Sycamore	40.88046 -88.13618	Behind Guardrail South Side of IL 116, Okay to Leave Stump
19	EB	1	11		Sycamore	40.88046 -88.13588	Behind Guardrail South Side of IL 116, Okay to Leave Stump
20	EB	1	11		Sycamore	40.88046 -88.13588	Behind Guardrail South Side of IL 116, Okay to Leave Stump
21	EB	1		17	Sycamore	40.88046 -88.13588	Behind Guardrail South Side of IL 116, Okay to Leave Stump
22	EB	1	9		Sycamore	40.88046 -88.13588	Behind Guardrail South Side of IL 116, Okay to Leave Stump
23	EB	1	12		Sycamore	40.88046 -88.13588	Behind Guardrail South Side of IL 116, Okay to Leave Stump
24	EB	1	11		Sycamore	40.88044 -88.13531	Behind Guardrail South Side of IL 116, Okay to Leave Stump
25	EB	1		26	Elm	40.88049 -88.13492	Behind Guardrail South Side of IL 116, Okay to Leave Stump
26	EB	1		21	Sycamore	40.88047 -88.13441	Behind Guardrail South Side of IL 116, Okay to Leave Stump
27	EB	1	11		Sycamore	40.88049 -88.13376	Behind Guardrail South Side of IL 116, Okay to Leave Stump
28	EB	1	9		Sycamore	40.88049 -88.13376	Behind Guardrail South Side of IL 116, Okay to Leave Stump
29	EB	1	9		Sycamore	40.88049 -88.13376	Behind Guardrail South Side of IL 116, Okay to Leave Stump
30	EB	1	9		Sycamore	40.88049 -88.13376	Behind Guardrail South Side of IL 116, Okay to Leave Stump
31	EB	1	10		Sycamore	40.88049 -88.13376	Behind Guardrail South Side of IL 116, Okay to Leave Stump
32	EB	1		16	Elm	40.8805 -88.13288	Behind Guardrail South Side of IL 116, Okay to Leave Stump
33	EB	1		16	Sycamore	40.88053 -88.13246	Behind Guardrail South Side of IL 116, Okay to Leave Stump
34	EB	1	8		Cedar	40.88054 -88.13195	Behind Guardrail South Side of IL 116, Okay to Leave Stump
35	EB	1	8		Cedar	40.88054 -88.13195	Behind Guardrail South Side of IL 116, Okay to Leave Stump
36	EB	1	8		Sycamore	40.88054 -88.13195	Behind Guardrail South Side of IL 116, Okay to Leave Stump
37	EB	1	8		Elm	40.88054 -88.13195	Behind Guardrail South Side of IL 116, Okay to Leave Stump
38	EB	1	9		Elm	40.88054 -88.13195	Behind Guardrail South Side of IL 116, Okay to Leave Stump
39	EB	1	11		Sycamore	40.88054 -88.13195	Behind Guardrail South Side of IL 116, Okay to Leave Stump
40	EB	1	9		Sycamore	40.88054 -88.13195	Behind Guardrail South Side of IL 116, Okay to Leave Stump
41	EB	1	9		Sycamore	40.88054 -88.13195	Behind Guardrail South Side of IL 116, Okay to Leave Stump
42	EB	1		16	Sycamore	40.88054 -88.1315	Behind Guardrail South Side of IL 116, Okay to Leave Stump
43	EB	1		16	Elm	40.88054 -88.1315	Behind Guardrail South Side of IL 116, Okay to Leave Stump
44	EB	1	9		Sycamore	40.88054 -88.13121	Behind Guardrail South Side of IL 116, Okay to Leave Stump
45	EB	1	11		Sycamore	40.88054 -88.13121	Behind Guardrail South Side of IL 116, Okay to Leave Stump
46	EB	1	9		Sycamore	40.88054 -88.13121	Behind Guardrail South Side of IL 116, Okay to Leave Stump
47	EB	1	9		Cedar	40.88056 -88.13068	Behind Guardrail South Side of IL 116, Okay to Leave Stump
48	EB	1	9		Sycamore	40.88056 -88.13068	Behind Guardrail South Side of IL 116, Okay to Leave Stump
49	EB	1		16	Sycamore	40.88056 -88.13068	Behind Guardrail South Side of IL 116, Okay to Leave Stump
50	EB	1		21	Elm	40.88056 -88.13068	Behind Guardrail South Side of IL 116, Okay to Leave Stump
<b>TOTALS</b>		<b>286</b>	<b>376</b>				

\* VARIOUS

MODEL: Default  
 FILE NAME: P:\Bids\66P72\66P72\DOT Documents\DOT Office\66P72\CAD\66P72\66P72\Sched.dwg

USER NAME = Mohamed, Yousof	DESIGNED -	REVISED -
PLOT SCALE = \$SCALES	DRAWN -	REVISED -
PLOT DATE = 6/27/2024	CHECKED -	REVISED -
	DATE -	REVISED -

**STATE OF ILLINOIS  
DEPARTMENT OF TRANSPORTATION**

**SCHEDULES**

SCALE: SHEET OF SHEETS STA. TO STA.

F.A. RTE.	SECTION	COUNTY	TOTAL SHEETS	SHEET NO.
*	2025-01 TREE REMOVAL	VARIOUS	9	7
CONTRACT NO. 66P72				
ILLINOIS FED. AID PROJECT				

US 45/US 52 (S. Schuyler Avenue)						KANKAKEE COUNTY
NUMBER AND DIRECTION	NUMBER OF TREES/SIZE	TREE REM DIA 6 TO 15	TREE REM DIA OVER 15	GENERAL TYPE OF TREE	GIS PIN	REMARKS/NOTES
		UNIT	UNIT	SPECIES	LAT/LONG	KANKAKEE YARD - 321
Stationary Road to River Road						
1	NB	1	12		Dead	41.096648829310745, -87.86883052200598
2	NB	1	13		Dead	41.096789310736646, -87.86882783980076
3	NB	1	14		Dead	41.09682670502337, -87.86884125084684
4	NB	1	13		Dead	41.096877237809444, -87.86883454532381
5	NB	1	13		Dead	41.096928781211155, -87.86884527416066
6	NB	1	13		Dead	41.09698265613511, -87.86885136078581
7	NB	1	9		Dead	41.09703417422796, -87.86884490731269
8	NB	1	10		Dead	41.09702651491118, -87.86884897278138
9	NB	1	10		Dead	41.097133220337206, -87.86886131592996
10	NB	1	8		Dead	41.09714831247241, -87.86885361330633
11	NB	1	10		Dead	41.09718314046125, -87.86884899173256
12	NB	1	9		Dead	41.097294401937155, -87.86886637698397
13	NB	1	14		Dead	41.098179812337925, -87.86881645913228
15	NB	1	12		Dead	41.09950732046416, -87.86887205346426
14	NB	1		15	Dead	41.09962003219402, -87.86886431686304
16	NB	1	14		Dead	41.09994750240686, -87.86889517296629
<b>TOTALS</b>			<b>174</b>	<b>15</b>		

Interstate 57 (I-57)						KANKAKEE COUNTY
NUMBER AND DIRECTION	NUMBER OF TREES/SIZE	TREE REM DIA 6 TO 15	TREE REM DIA OVER 15	GENERAL TYPE OF TREE	GIS PIN	REMARKS/NOTES
		UNIT	UNIT	SPECIES	LAT/LONG	KANKAKEE YARD - 321
Mile Marker 310						
1	NB	1		27	Dead	41.14851306772852, -87.83807297926516
<b>TOTALS</b>				<b>27</b>		

MODEL: D:\data\...  
 FILE NAME: ...

\* VARIOUS

USER NAME = Mohamed.Yousif	DESIGNED -	REVISED -	<b>STATE OF ILLINOIS DEPARTMENT OF TRANSPORTATION</b>	<b>SCHEDULES</b>			F.A. RTE.	SECTION	COUNTY	TOTAL SHEETS	SHEET NO.			
PLOT SCALE = \$\$SCALE\$	CHECKED -	REVISED -		SCALE:	SHEET	OF	SHEETS	STA.	TO STA.	*	2025-01 TREE REMOVAL	VARIOUS	9	8
PLOT DATE = 7/2/2024	DATE -	REVISED -		CONTRACT NO. 66P72										
											ILLINOIS	FED. AID PROJECT		



Interstate 39 (I-39)						LASALLE COUNTY
NUMBER AND DIRECTION	NUMBER OF TREES/SIZE	TREE REM DIA 6 TO 15	TREE REM DIA OVER 15	GENERAL TYPE OF TREE	GIS PIN	REMARKS/NOTES
		UNIT	UNIT	SPECIES	LAT/LONG	LASALLE YARD - 344
North of N 29th Rd						
1	SB	1	36	Cottonwood	41.35424, -89.06238	58.2 mm along row fence
2	SB	1	29	Cottonwood	41.35413, -89.06245	58.2 mm along row fence, 3 trees in same location
3	SB	1	25	Cottonwood	41.35413, -89.06245	58.2 mm along row fence, 3 trees in same location
4	SB	1	19	Cottonwood	41.35413, -89.06245	58.2 mm along row fence, 3 trees in same location
<b>TOTALS</b>			<b>109</b>			

US 34						LASALLE COUNTY
NUMBER AND DIRECTION	NUMBER OF TREES/SIZE	TREE REM DIA 6 TO 15	TREE REM DIA OVER 15	GENERAL TYPE OF TREE	GIS PIN	REMARKS/NOTES
		UNIT	UNIT	SPECIES	LAT/LONG	OTTAWA YARD - 343
Between E Union Street and E14th Road						
1	WB	1	36	Dead	41.58546205678014, -88.90077441658111	Approximately 300' East of E Union Street Going to Earlville
<b>TOTALS</b>			<b>36</b>			

IL 71						LASALLE COUNTY
NUMBER AND DIRECTION	NUMBER OF TREES/SIZE	TREE REM DIA 6 TO 15	TREE REM DIA OVER 15	GENERAL TYPE OF TREE	GIS PIN	REMARKS/NOTES
		UNIT	UNIT	SPECIES	LAT/LONG	LASALLE YARD - 344
South/West of E 1st Street in Cedar Point						
1	EB	2	52	Dead	41.26426544899534, -89.12087741377232	Across from Old Hotel, Double Trunk (16 + 36)
<b>TOTALS</b>			<b>52</b>			

\* VARIOUS

MODEL: D:\draft\... FILE NAME: ...

USER NAME = Mohamed.Yousif	DESIGNED -	REVISED -
	DRAWN -	REVISED -
PLOT SCALE = \$SCALE\$	CHECKED -	REVISED -
PLOT DATE = 6/27/2024	DATE -	REVISED -

**STATE OF ILLINOIS  
DEPARTMENT OF TRANSPORTATION**

**SCHEDULES**

SCALE: SHEET OF SHEETS STA. TO STA.

F.A. RTE.	SECTION	COUNTY	TOTAL SHEETS	SHEET NO.
*	2025-01 TREE REMOVAL	VARIOUS	9	9
CONTRACT NO. 66P72				
		ILLINOIS	FED. AID PROJECT	