

STATE OF ILLINOIS  
DEPARTMENT OF TRANSPORTATION

F.A.P. RTE.	SECTION	COUNTY	TOTAL SHEETS	SHEET NO.
116	D7 BRIDGE REPAIRS 2025-8	JASPER	25	1
		ILLINOIS	CONTRACT NO. 74C57	

D-97-103-23

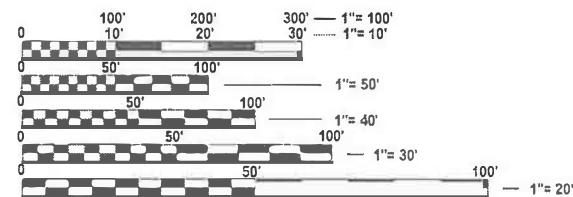
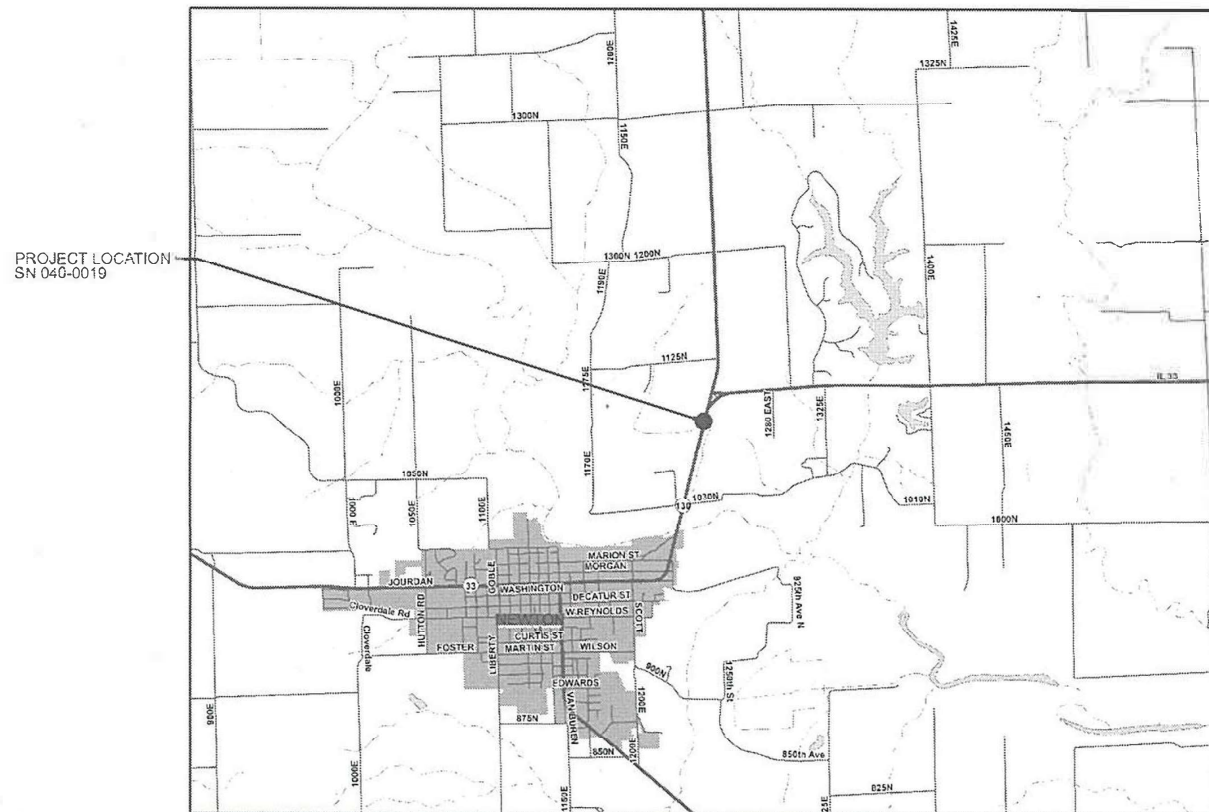
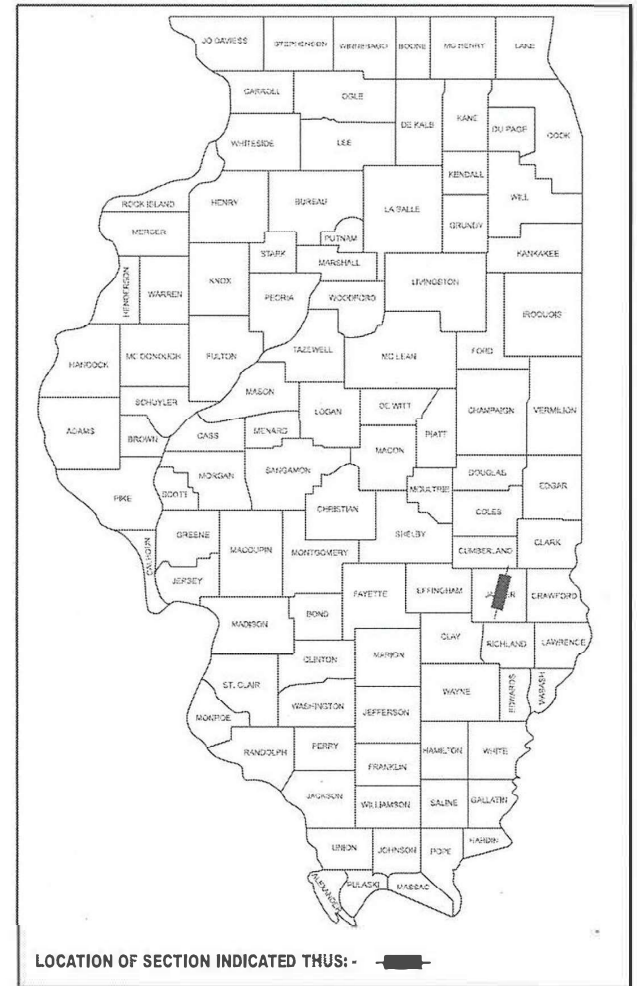
FOR INDEX OF SHEETS, SEE SHEET NO. 2

ADT (2021) = 5350

# PROPOSED HIGHWAY PLANS

FAP ROUTE 116 (IL 130, IL 33)  
SECTION D7 BRIDGE REPAIRS 2025-8  
PROJECT STP-HUNK(181)  
BRIDGE DECK OVERLAY, JOINT REPLACE/REPAIR  
JASPER COUNTY

C-97-134-23



FULL SIZE PLANS HAVE BEEN PREPARED USING STANDARD ENGINEERING SCALES. REDUCED SIZED PLANS WILL NOT CONFORM TO STANDARD SCALES. IN MAKING MEASUREMENTS ON REDUCED PLANS, THE ABOVE SCALES MAY BE USED.

J.U.L.I.E.  
JOINT UTILITY LOCATION INFORMATION FOR EXCAVATION  
1-800-892-0123  
OR 811

PROJECT ENGINEER: JACQUELYN SEALS  
PROJECT MANAGER: LEAH HILLE

CONTRACT NO. 74C57

STATE OF ILLINOIS  
DEPARTMENT OF TRANSPORTATION

SUBMITTED JUNE 25 2024  
*Jeffrey P. Myer*  
REGIONAL ENGINEER

August 16, 2024  
*Scott A. Elk*  
ENGINEER OF DESIGN AND ENVIRONMENT

August 16, 2024  
*James J. Jan*  
DIRECTOR OF HIGHWAYS PROJECT IMPLEMENTATION

PRINTED BY THE AUTHORITY  
OF THE STATE OF ILLINOIS

**GENERAL NOTES**

THE EXISTING PAVEMENT MARKINGS THAT CONFLICT WITH STAGE I & II OF STANDARD 701321 SHALL BE COVERED WITH PAVEMENT MARKING BLACKOUT TAPE, 5".

**INDEX OF SHEETS**

SHEET NO.	ITEM
1	COVER SHEET
2	GENERAL NOTES, INDEX OF SHEETS & LIST OF STANDARDS
3-4	SUMMARY OF QUANTITIES
5	SCHEDULE OF QUANTITIES
6	TRANSITION DETAIL
7-8	TYPICAL SECTIONS
9-14	STAGE CONSTRUCTION DETAILS
15-21	BRIDGE REPAIR PLANS
22-25	DISTRICT 7 PAVEMENT MARKING DETAILS

THE FOLLOWING STANDARDS ARE A PART OF THESE PLANS AND ARE INCLUDED AFTER SHEET NO. 25:

STANDARD NO.	DESCRIPTION
000001-08	STANDARD SYMBOLS, ABBREVIATIONS AND PATTERNS
001001-02	AREAS OF REINFORCEMENT BARS
001006	DECIMAL OF AN INCH AND OF A FOOT
701001-02	OFF-ROAD OPERATIONS, 2L, 2W MORE THAN 15' (4.5 M) AWAY FROM PAVEMENT EDGE
701006-05	OFF-ROAD OPERATIONS, 2L, 2W 15' (4.5 M) TO 24" (600 MM) FROM PAVEMENT EDGE
701201-05	LANE CLOSURE, 2L, 2W, DAY ONLY, FOR SPEEDS GREATER THAN 45 MPH
701301-04	LANE CLOSURE, 2L, 2W, SHORT TIME OPERATIONS
701311-03	LANE CLOSURE, 2L, 2W, MOVING OPERATIONS - DAY ONLY
701321-18	LANE CLOSURE, 2L, 2W, BRIDGE REPAIR WITH BARRIER
701326-04	LAND CLOSURE, 2L, 2W, PAVEMENT WIDENING, FOR SPEEDS GREATER THAN 45 MPH
701901-09	TRAFFIC CONTROL DEVICES
704001-08	TEMPORARY CONCRETE BARRIER
780001-05	TYPICAL PAVEMENT MARKINGS
782006-01	GUARDRAIL AND BARRIER WALL REFLECTOR MOUNTING DETAILS
420001-10	PAVEMENT JOINTS

**APPLICATION RATES**

THE FOLLOWING APPLICATION RATES WERE USED IN CALCULATING PLAN QUANTITIES AND HAVE BEEN INCLUDED FOR REFERENCE:

BITUMINOUS MATERIALS (TACK COAT)	0.05 LB/SQ FT (ON MILLED SURFACES)
	0.025 LB/SQ FT (ON HMA LIFTS)
HMA SURFACE COURSE	112 LB/SY/IN

**MIXTURE REQUIREMENTS**

THE FOLLOWING MIXTURE REQUIREMENTS ARE APPLICABLE TO THIS PROJECT:

LOCATION(S)	MIXTURE USE(S)	PG	DESIGN AIR VOIDS	MIXTURE COMPOSITION	FRICTION AGGREGATE	MIXTURE WEIGHT	QUALITY MANAGEMENT PROGRAM	SUBLOT SIZE	MATERIAL TRANSFER DEVICE (REQUIRED?)
MAINLINE	HMA SURFACE COURSE, IL-9.5, MIX "C", N70	PG 64-22	4.0% @ N=70	IL - 9.5	MIXTURE C	N70	QC/QA	3000	N/A

REV - MS

MODEL: General Note (Sheet)  
FILE NAME: c:\pwworkspace\billie\m091094\174\c57-shi-gam.mxd.dgn

USERNAME = leah.hille	DESIGNED -	REVISED -
	DRAWN -	REVISED -
PLOT SCALE = \$\$CALES	CHECKED -	REVISED -
PLOT DATE = 6/26/2024	DATE -	REVISED -

**STATE OF ILLINOIS  
DEPARTMENT OF TRANSPORTATION**

**GENERAL NOTES, INDEX OF SHEETS,  
& LIST OF STANDARDS**

SCALE: SHEET 1 OF 1 SHEETS STA. TO STA.

F.A.P. RTE.	SECTION	COUNTY	TOTAL SHEETS	SHEET NO.
116	D7 BRIDGE REPAIRS 2025-8	JASPER	25	2
			CONTRACT NO. 74C57	
ILLINOIS   FED. AID PROJECT				

SUMMARY OF QUANTITIES				80% FED 20% STATE	CONSTR. CODE
CODE NO.	ITEM	UNIT	TOTAL QUANTITY	0059	
				JASPER	040-0019
20200500	EARTH EXCAVATION (WIDENING)	CU YD	135	135	
35400500	PORTLAND CEMENT CONCRETE BASE COURSE WIDENING 10"	SQ YD	488	488	
40600290	BITUMINOUS MATERIALS (TACK COAT)	POUND	296	296	
40600370	LONGITUDINAL JOINT SEALANT	FOOT	151	151	
40600982	HOT-MIX ASPHALT SURFACE REMOVAL - BUTT JOINT	SQ YD	278	278	
40600990	TEMPORARY RAMP	SQ YD	28	28	
40604002	HOT-MIX ASPHALT SURFACE COURSE, IL-9.5FG, MIX "C", N70	TON	56	56	
44004250	PAVED SHOULDER REMOVAL	SQ YD	87	87	
48102100	AGGREGATE SHOULDERS, TYPE B	SQ YD	14	14	
50102400	CONCRETE REMOVAL	CU YD	3.4	3.4	
50300255	CONCRETE SUPERSTRUCTURE	CU YD	3.3	3.3	
50300300	PROTECTIVE COAT	SQ YD	805	805	
50800205	REINFORCEMENT BARS, EPOXY COATED	POUND	600	600	
50800515	BAR SPLICERS	EACH	6	6	

\*SPECIALTY ITEMS

SUMMARY OF QUANTITIES				80% FED 20% STATE	CONSTR. CODE
CODE NO.	ITEM	UNIT	TOTAL QUANTITY	0059	
				JASPER	040-0019
52000110	PREFORMED JOINT STRIP SEAL	FOOT	42	42	
67000400	ENGINEER'S FIELD OFFICE, TYPE A	CAL MO	6	6	
67100100	MOBILIZATION	L SUM	1	1	
70100450	TRAFFIC CONTROL AND PROTECTION, STANDARD 701201	L SUM	1	1	
70100405	TRAFFIC CONTROL AND PROTECTION, STANDARD 701321	EACH	1	1	
70100500	TRAFFIC CONTROL AND PROTECTION, STANDARD 701326	L SUM	1	1	
70106500	TEMPORARY BRIDGE TRAFFIC SIGNALS	EACH	1	1	
70106700	TEMPORARY RUMBLE STRIPS	EACH	6	6	
70107005	PAVEMENT MARKING BLACKOUT TAPE, 5"	FOOT	894	894	
70107025	CHANGEABLE MESSAGE SIGN	CAL DA	28	28	
70300100	SHORT TERM PAVEMENT MARKING	FOOT	34	34	
70300150	SHORT TERM PAVEMENT MARKING REMOVAL	SQ FT	310	310	
70300221	TEMPORARY PAVEMENT MARKING - LINE 4"- PAINT	FOOT	1163	1163	
70400100	TEMPORARY CONCRETE BARRIER	FOOT	562.5	562.5	

REV - MS

MODEL: SQO (Sheet)  
FILE NAME: c:\pw\work\pwr\billitem\091094\1074\57-ah-500-schedule.dgn

USER NAME = chase.blackerby	DESIGNED -	REVISED -
	DRAWN -	REVISED -
PLOT SCALE = \$\$CALES	CHECKED -	REVISED -
PLOT DATE = 6/14/2024	DATE -	REVISED -

STATE OF ILLINOIS  
DEPARTMENT OF TRANSPORTATION

SUMMARY OF QUANTITIES

SCALE: SHEET 1 OF 2 SHEETS STA. TO STA.

F.A.P. RTE.	SECTION	COUNTY	TOTAL SHEETS	SHEET NO.
116	D7 BRIDGE REPAIRS 2025-8	JASPER	25	3
CONTRACT NO. 74C57				
ILLINOIS FED. AID PROJECT				

SUMMARY OF QUANTITIES				80% FED 20% STATE	CONSTR. CODE
CODE NO.	ITEM	UNIT	TOTAL QUANTITY	0059	
				JASPER 040-0019	
70400200	RELOCATE TEMPORARY CONCRETE BARRIER	FOOT	487.5	487.5	
70600250	IMPACT ATTENUATORS, TEMPORARY (NON- REDIRECTIVE), TEST LEVEL 3	EACH	2	2	
70600350	IMPACT ATTENUATORS, RELOCATE (NON- REDIRECTIVE), TEST LEVEL 3	EACH	2	2	
* 78001110	PAINT PAVEMENT MARKING - LINE 4"	FOOT	1163	1163	
78300200	RAISED REFLECTIVE PAVEMENT MARKER REMOVAL	EACH	2	2	
Z0001800	APPROACH SLAB REPAIR (PARTIAL DEPTH)	SQ YD	2	2	
Z0012111	BRIDGE DECK FLY ASH OR GGBF SLAG CONCRETE OVERLAY, 2 1/2"	SQ YD	795	795	
Z0012130	BRIDGE DECK SCARIFICATION 3/4"	SQ YD	795	795	
Z0029090	DIAMOND GRINDING (BRIDGE SECTION)	SQ YD	724	724	
X5030250	BRIDGE DECK GROOVING (LONGITUDINAL)	SQ YD	478	478	

\* SPECIALTY ITEM

MODEL: S002 (Sheet)  
FILE NAME: c:\p\work\pwr\stabil\item\091094\17\4C57-ah-SDQ-schedule.dgn

REV - MS

USER NAME = leah.hille	DESIGNED -	REVISED -	<b>STATE OF ILLINOIS DEPARTMENT OF TRANSPORTATION</b>	<b>SUMMARY OF QUANTITIES</b>	F.A.P. RTE.	SECTION	COUNTY	TOTAL SHEETS	SHEET NO.
PLOT SCALE = \$SCALE\$	DRAWN -	REVISED -			116	D7 BRIDGE REPAIRS 2025-8	JASPER	25	4
PLOT DATE = 6/26/2024	CHECKED -	REVISED -			CONTRACT NO. 74C57				
	DATE -	REVISED -			SCALE:	SHEET 2 OF 2 SHEETS	STA.	TO STA.	ILLINOIS   FED. AID PROJECT

TRAFFIC CONTROL SCHEDULE	TRAFFIC CONTROL AND PROTECTION, STANDARD 701321	TRAFFIC CONTROL AND PROTECTION, STANDARD 701326	TEMPORARY BRIDGE TRAFFIC SIGNALS	TEMPORARY RUMBLE STRIPS	TEMPORARY CONCRETE BARRIER	RELOCATE TEMPORARY CONCRETE BARRIER	IMPACT ATTENUATORS, TEMPORARY (NON-REDIRECTIVE), TEST LEVEL 3	IMPACT ATTENUATORS, RELOCATE (NON-REDIRECTIVE), TEST LEVEL 3
	70100405	70100500	70106500	70106700	70400100	70400200	70600250	70600350
STAGE	EACH	L SUM	EACH	EACH	FT	FT	EACH	EACH
STRUCTURE 040-0019	1	1	1	6	-	-	-	-
STAGE I	-	-	-	-	562.50	-	2	-
STAGE II	-	-	-	-	-	487.50	-	2
<b>TOTALS:</b>	<b>1</b>	<b>1</b>	<b>1</b>	<b>6</b>	<b>562.5</b>	<b>487.5</b>	<b>2</b>	<b>2</b>

RESURFACING SCHEDULE			BITUMINOUS MATERIALS (TACK COAT)	LONGITUDINAL JOINT SEALANT	TEMPORARY RAMP	HOT-MIX ASPHALT SURFACE COURSE, IL-9.5, MIX "C", N70	HOT-MIX ASPHALT SURFACE REMOVAL - BUTT JOINT	AGGREGATE WEDGE SHOULDER, TYPE B	
STATION	TO	STATION	POUND	FT	SQ YD	TON	SQ YD	SQ YD	
97+95.75	TO	98+92.21	-	-	-	-	-	2.7	
98+92.21	TO	99+42.21	97.5	50.0	13.9	18.2	138.9	1.4	
99+42.21	TO	99+51.21	17.6	9.0	-	3.3	-	0.3	
99+51.21	TO	99+63.21	24.0	12.0	-	4.5	-	-	
99+63.21	TO	101+44.13	<b>BRIDGE OMISSION</b>						-
101+44.13	TO	101+56.13	24.0	12.0	-	4.5	-	-	
101+56.13	TO	101+74.13	35.1	18.0	-	6.6	-	0.5	
101+74.13	TO	102+24.13	97.5	50.0	13.9	18.2	138.9	2.4	
102+24.13	TO	103+12.13	-	-	-	-	-	5.9	
<b>TOTALS:</b>			<b>296</b>	<b>151</b>	<b>28</b>	<b>56</b>	<b>278</b>	<b>14</b>	

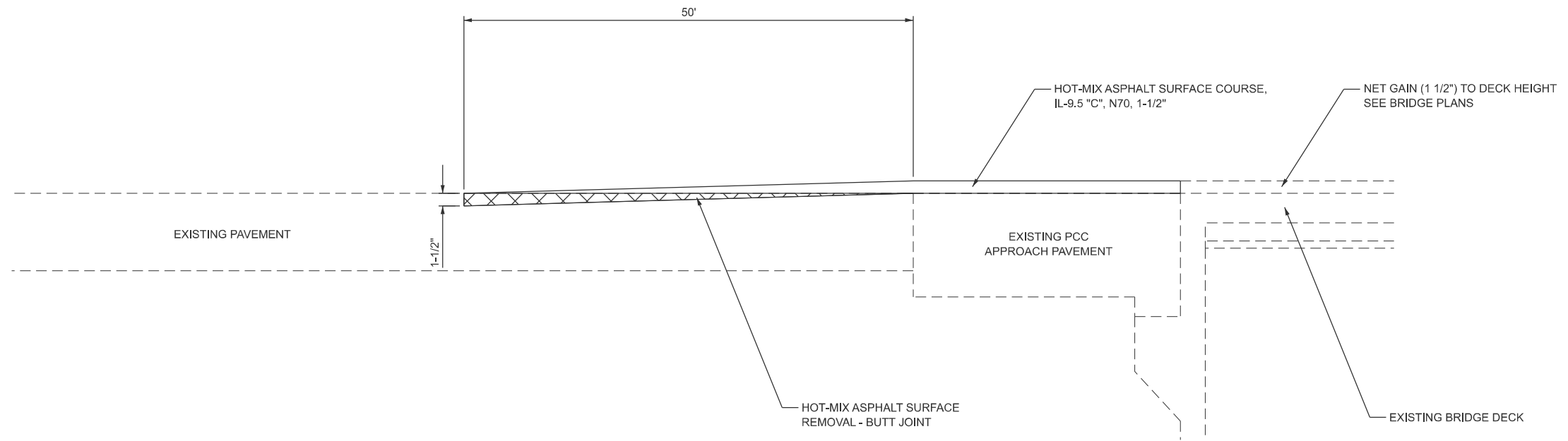
PAVEMENT MARKING SCHEDULE			PAVEMENT MARKING BLACKOUT TAPE, 5"	SHORT TERM PAVEMENT MARKING	SHORT TERM PAVEMENT MARKING REMOVAL	TEMPORARY PAVEMENT MARKING - LINE 4" - PAINT	PAINT PAVEMENT MARKING - LINE 4"
STATION	TO	STATION	FT	FT	SQ FT	FT	FT
97+95.75	TO	103+12.25	-	-	-	1163	1163
96+35.58	TO	98+35.75	50.0	-	16.7	-	-
98+05.75	TO	103+02.25	496.5	-	165.5	-	-
102+72.25	TO	104+68.25	49.0	-	16.3	-	-
98+05.75	TO	99+51.21	145.5	-	48.5	-	-
101+56.13	TO	103+08.25	152.1	-	50.7	-	-
98+92.21	TO	99+42.21	-	5	1.7	-	-
99+42.21	TO	99+51.21	-	0.9	0.3	-	-
99+51.21	TO	99+63.21	-	1.2	0.4	-	-
99+63.21	TO	101+44.13	-	18.1	6.0	-	-
101+44.13	TO	101+56.13	-	1.2	0.4	-	-
101+56.13	TO	101+74.13	-	1.8	0.6	-	-
101+74.13	TO	102+24.13	-	5	1.7	-	-
<b>TOTALS:</b>			<b>894</b>	<b>34</b>	<b>310</b>	<b>1163</b>	<b>1163</b>

BASE COURSE WIDENING SCHEDULE			EARTH EXCAVATION (WIDENING)	PORTLAND CEMENT CONCRETE BASE COURSE WIDENING, 10"	PAVED SHOULDER REMOVAL
STATION	TO	STATION	CU YD	SQ YD	SQ YD
97+95.75	TO	99+42.21	63.0	227.8	31.89
99+42.21	TO	99+51.21	4.2	15.0	7.50
99+51.21	TO	101+56.13	<b>BRIDGE OMISSION</b>		
101+56.13	TO	101+74.13	8.3	30.0	15.00
101+74.13	TO	103+12.13	59.4	214.9	31.89
<b>TOTALS:</b>			<b>135</b>	<b>488</b>	<b>87</b>

MODEL: Schedules (Sheet)  
FILE NAME: c:\p\work\pvt\hille\m\0911094\1774C57-shr-SOC-schedule.dgn

# BUTT JOINT DETAIL

STATION 98+92.21 TO STATION 99+63.21  
STATION 101+44.13 TO STATION 102+24.13



MODEL: Transition Detail (Sheet)  
FILE NAME: c:\p\work\project\hillemc091094\174C57-sh1-details.dgn

USER NAME = Leah.Hille	DESIGNED - EMD	REVISED -
	DRAWN - EMD	REVISED -
PLOT SCALE = \$SCALE\$	CHECKED -	REVISED -
PLOT DATE = 6/26/2024	DATE - 6/27/2024	REVISED -

**STATE OF ILLINOIS  
DEPARTMENT OF TRANSPORTATION**

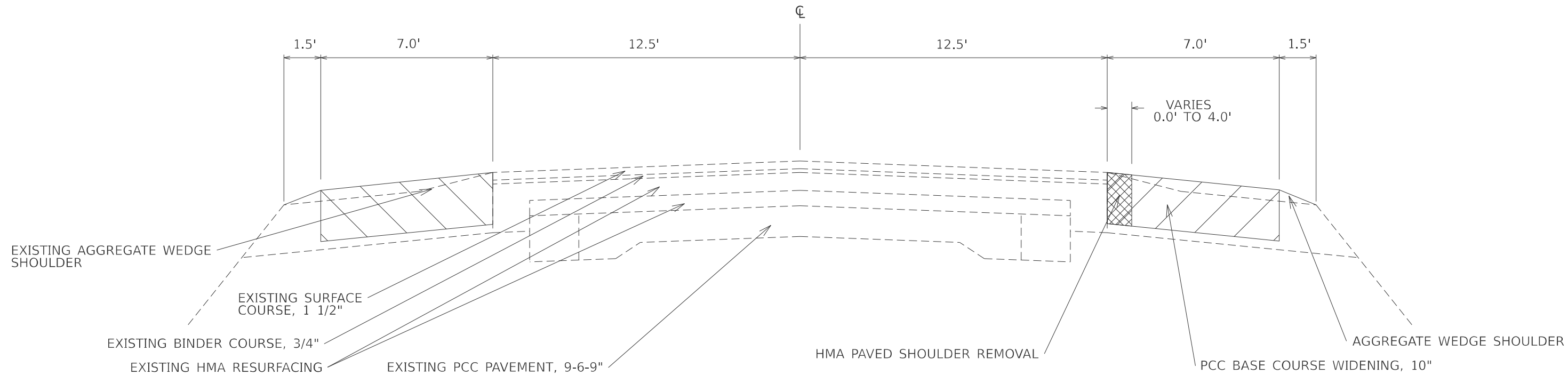
## BUTT JOINT DETAIL

SCALE: SHEET 1 OF 1 SHEETS STA. TO STA.

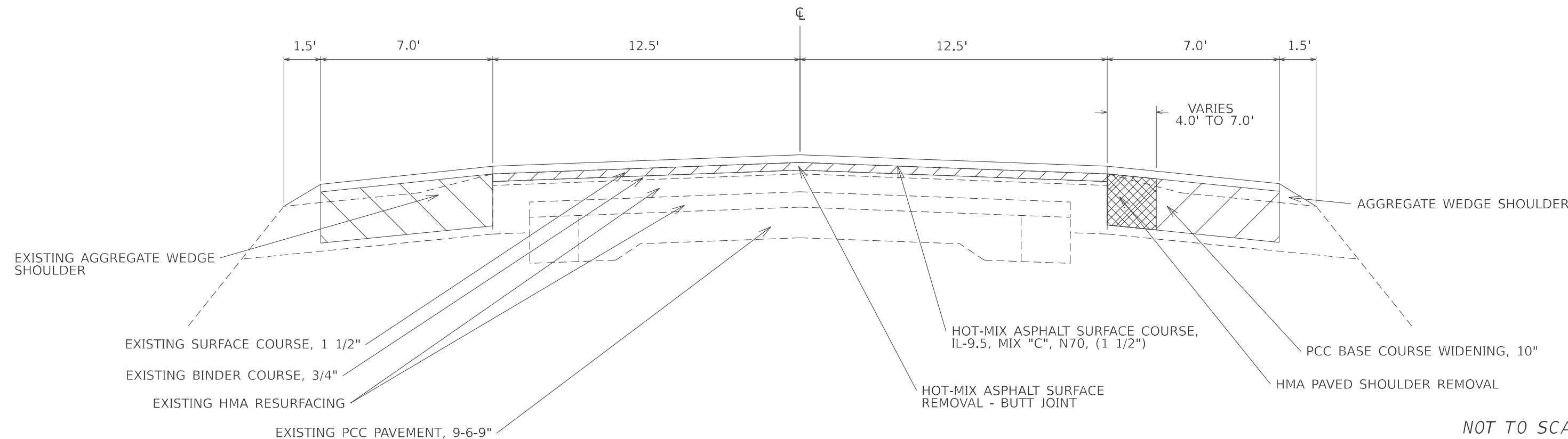
F.A.P. RTE.	SECTION	COUNTY	TOTAL SHEETS	SHEET NO.
116	D7 BRIDGE REPAIRS 2025-8	JASPER	25	6
CONTRACT NO. 74C57				
ILLINOIS FED. AID PROJECT				

# TYPICAL PROPOSED CROSS SECTIONS

STA. 97+95.75 TO 98+92.21  
 STA. 102+24.13 TO 103+12.25



STA. 98+92.21 TO 99+42.21  
 STA. 101+74.13 TO 102+24.13



NOT TO SCALE

MODEL: Typical Sections (Sheet)  
 FILE NAME: c:\p\work\project\hille\m\091094\1074\74C57-shr-typical.dgn

USER NAME = Leah.Hille	DESIGNED -	REVISED -
PLOT SCALE = \$SCALE\$	DRAWN -	REVISED -
PLOT DATE = 6/26/2024	CHECKED -	REVISED -
	DATE -	REVISED -

**STATE OF ILLINOIS  
 DEPARTMENT OF TRANSPORTATION**

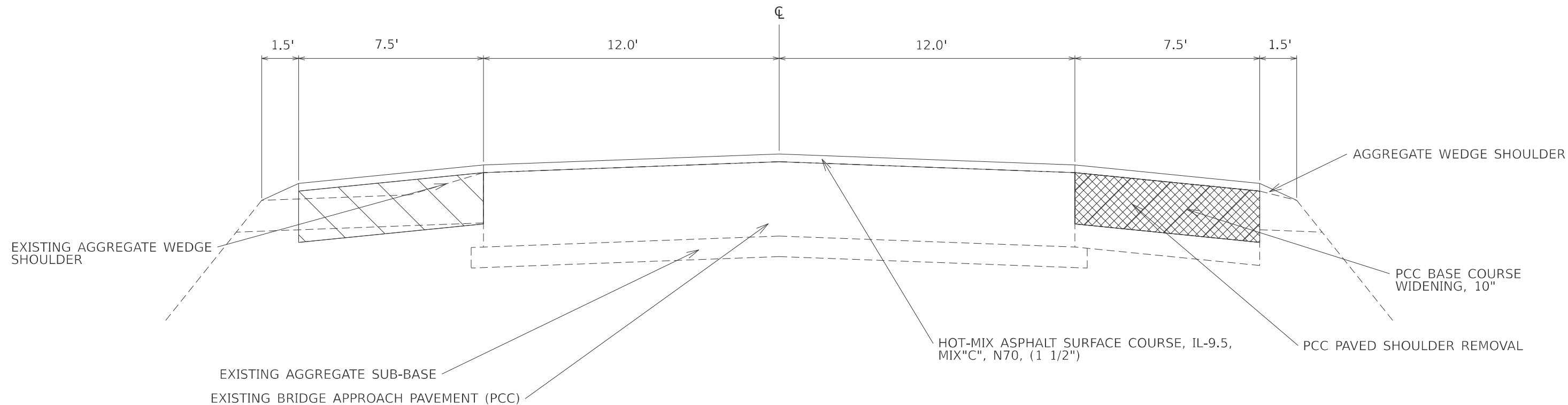
**TYPICAL SECTIONS**

SCALE: SHEET 1 OF 3 SHEETS STA. TO STA.

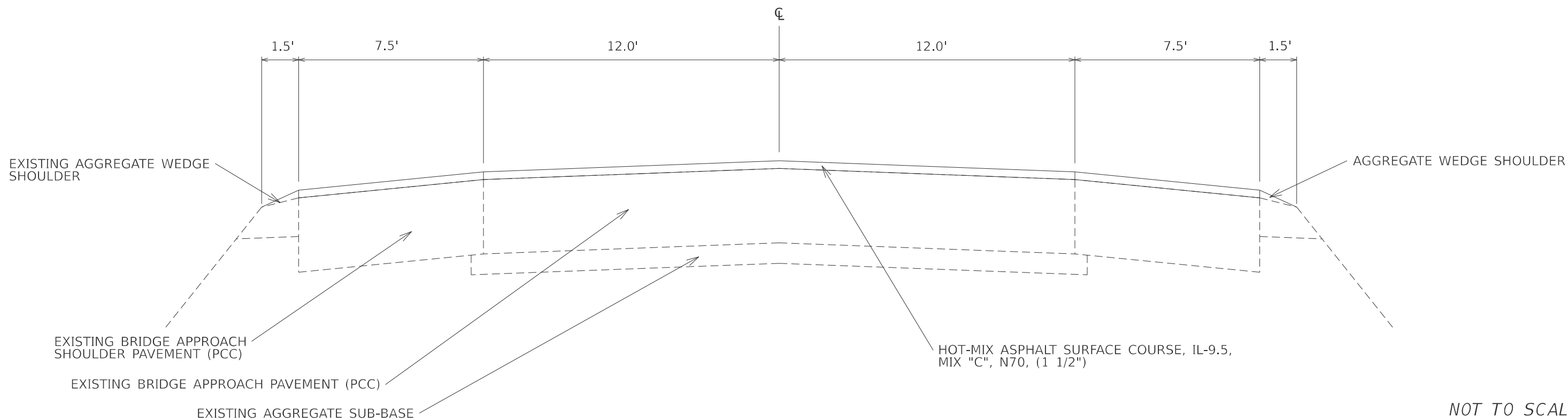
F.A.P. RTE.	SECTION	COUNTY	TOTAL SHEETS	SHEET NO.
116	D7 BRIDGE REPAIRS 2025-8	JASPER	25	7
CONTRACT NO. 74C57				
ILLINOIS FED. AID PROJECT				

# TYPICAL PROPOSED CROSS SECTION

STA. 99+42.21 TO 99+51.21  
 STA. 101+56.13 TO 101+74.13



STA. 99+51.21 TO 99+63.21  
 STA. 101+44.13 TO 101+56.13



NOT TO SCALE

MODEL: Typical Section 2 (Sheet)  
 FILE NAME: c:\p\work\pav\hille\m091094\174C57-shr-hypic\asb.dgn

USER NAME	* Leah.Hille	DESIGNED	-	REVISED	-
		DRAWN	-	REVISED	-
		CHECKED	-	REVISED	-
PLOT DATE	* 6/26/2024	DATE	-	REVISED	-

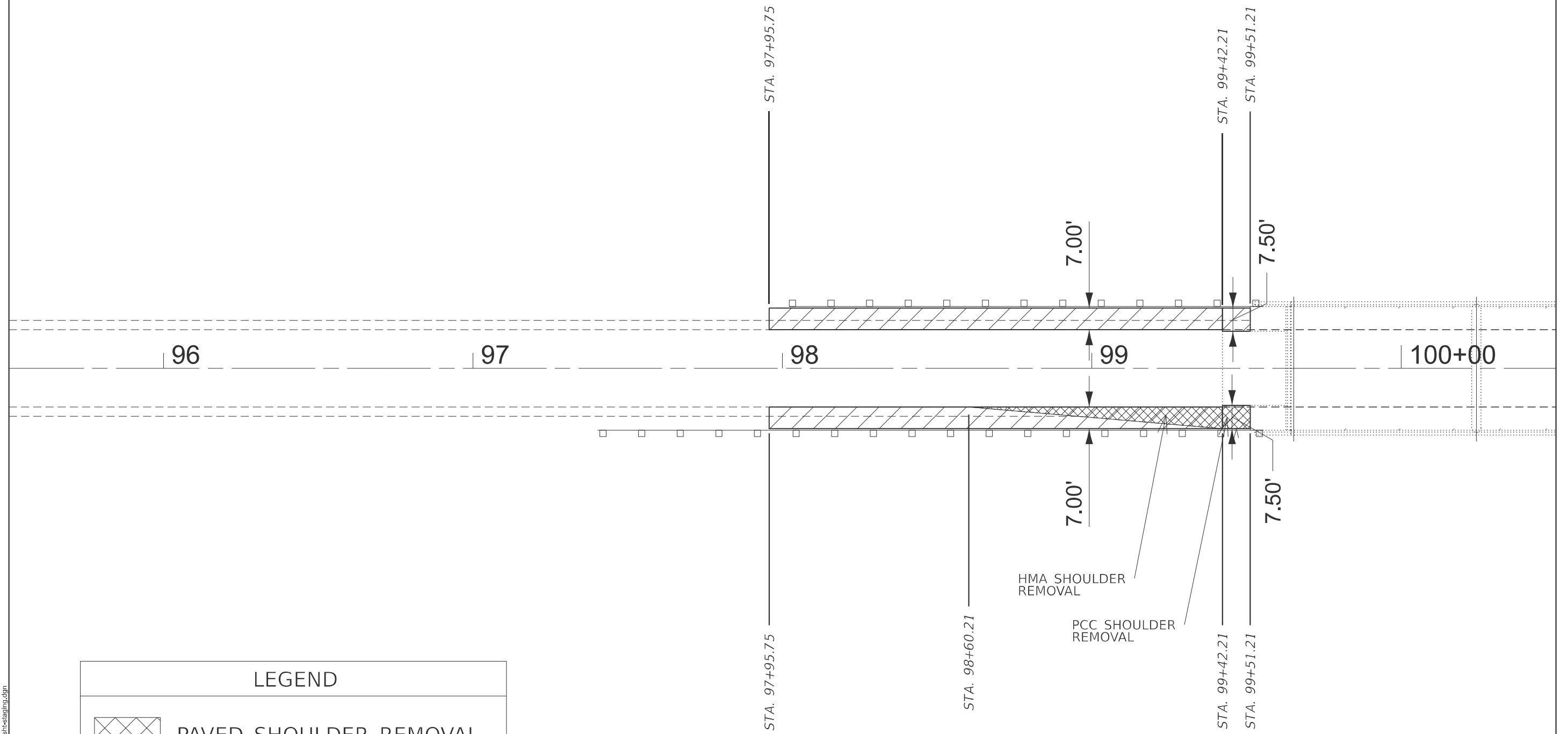
STATE OF ILLINOIS  
 DEPARTMENT OF TRANSPORTATION

TYPICAL SECTIONS

SCALE: SHEET 2 OF 3 SHEETS STA. TO STA.

F.A.P. RTE.	SECTION	COUNTY	TOTAL SHEETS	SHEET NO.
116	D7 BRIDGE REPAIRS 2025-8	JASPER	25	8
CONTRACT NO. 74C57				
ILLINOIS FED. AID PROJECT				





LEGEND	
	PAVED SHOULDER REMOVAL
	PCC BASE COURSE WIDENING

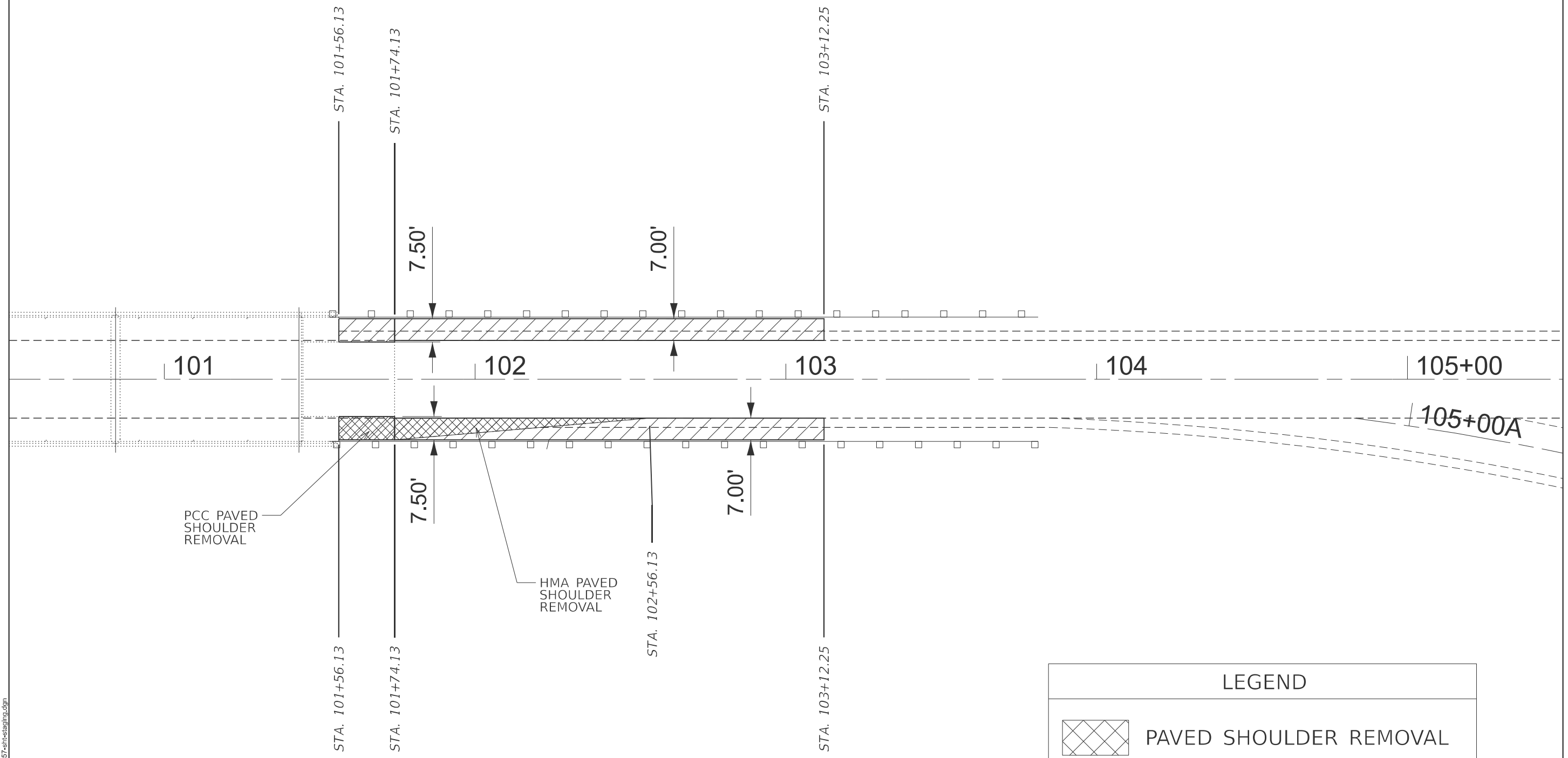
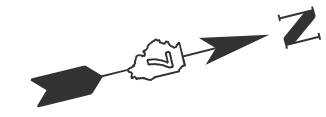
MODEL: Pre-Stage Construction - PCC Widening S. End [Sheet]  
 FILE NAME: c:\p\work\04\illinois\1094\10774C57-sst\stageing.dgn



USER NAME = chase.blackby	DESIGNED -	REVISED -
PLOT SCALE = \$SCALE\$	DRAWN -	REVISED -
PLOT DATE = 6/5/2024	CHECKED -	REVISED -
	DATE -	REVISED -

**STATE OF ILLINOIS  
DEPARTMENT OF TRANSPORTATION**

<b>PRE-STAGE CONSTRUCTION (PLAN VIEW)</b>		
SCALE: 1"=50'	SHEET 1 OF 6 SHEETS	STA. 95+50.00 TO STA. 100+50.00

F.A.P. RTE.	SECTION	COUNTY	TOTAL SHEETS	SHEET NO.
116	D7 BRIDGE REPAIRS 2025-8	JASPER	25	9
CONTRACT NO. 74C57				
ILLINOIS FED. AID PROJECT				



LEGEND	
	PAVED SHOULDER REMOVAL
	PCC BASE COURSE WIDENING

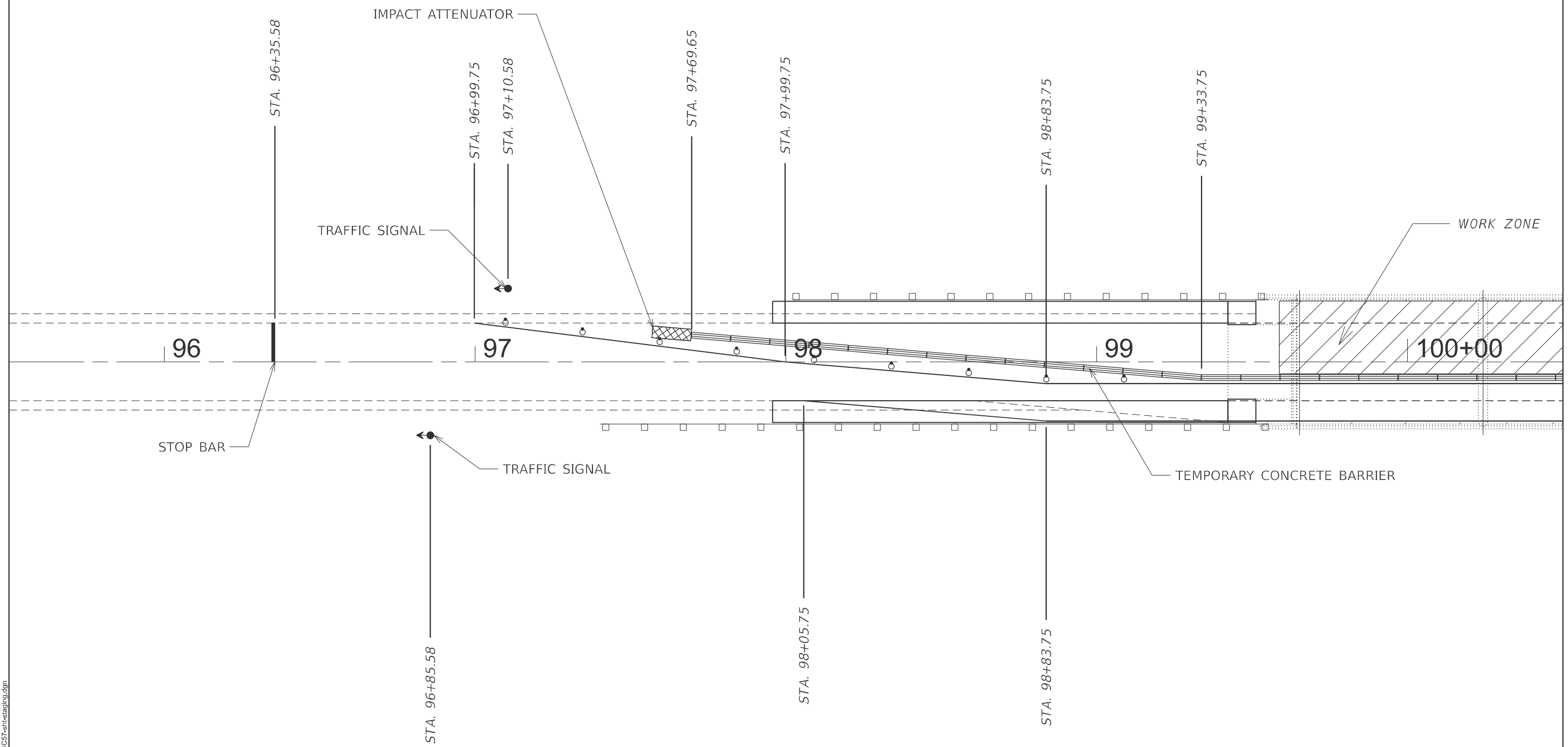
MODEL: Pre-Stage Construction - PCC Widening N\_End [Sheet]  
 FILE NAME: \\pwwork\001\116\116001\116001\_1094\116001\116001\_1094.dwg

USER NAME = chase.blackby	DESIGNED -	REVISED -
PLOT SCALE = 1/8"=1'-0"	CHECKED -	REVISED -
PLOT DATE = 6/5/2024	DATE -	REVISED -

**STATE OF ILLINOIS**  
**DEPARTMENT OF TRANSPORTATION**

<b>PRE-STAGE CONSTRUCTION</b>	
<b>(PLAN VIEW)</b>	
SCALE: 1"=50'	SHEET 2 OF 6 SHEETS
STA. 100+50.00	TO STA. 105+50.00

F.A.P. RTE.	SECTION	COUNTY	TOTAL SHEETS	SHEET NO.
116	D7 BRIDGE REPAIRS 2025-8	JASPER	25	10
CONTRACT NO. 74C57				
ILLINOIS FED. AID PROJECT				



FOR BARRIER OFFSET AND TRAFFIC CLEAR WIDTH  
REFER TO SHEET 16 OF THE PLANS

REFER TO STANDARD 701321 FOR LOCATIONS AND SPACING  
OF RUMBLE STRIPS, SIGNS, AND DETECTOR LOOPS

MODEL: Stage I Construction - S. End Stage 1 [Sheet]  
 FILE NAME: c:\p\work\04\116\116m091094\116\74C57-sht-16.dgn

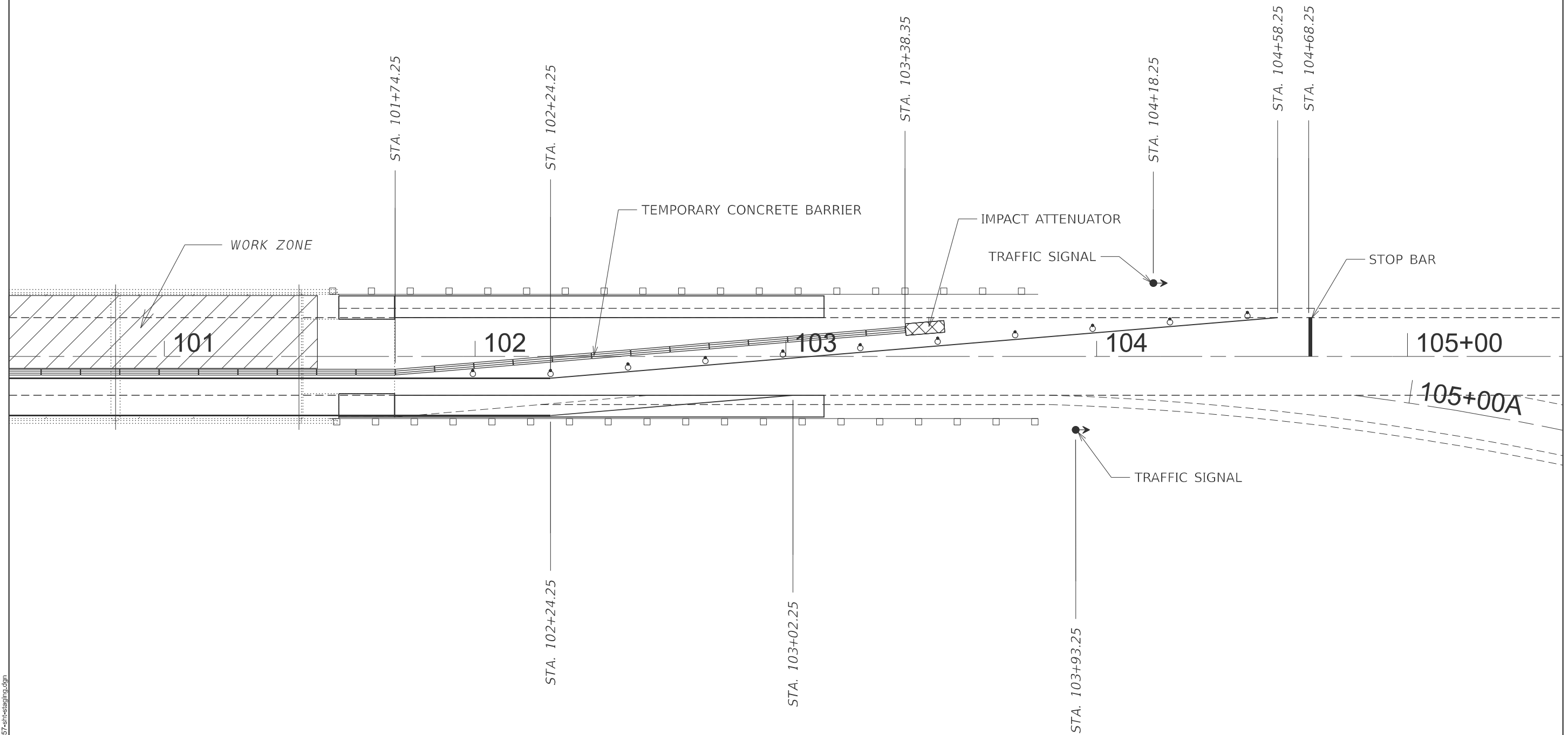
USER NAME = chase.blackby	DESIGNED -	REVISED -
	DRAWN -	REVISED -
PLOT SCALE = \$SCALE\$	CHECKED -	REVISED -
PLOT DATE = 6/5/2024	DATE -	REVISED -

**STATE OF ILLINOIS  
DEPARTMENT OF TRANSPORTATION**

**STAGE I CONSTRUCTION  
(PLAN VIEW)**

SCALE: 1"=50'      SHEET 1 OF 6 SHEETS      STA. 95+50.00 TO STA. 100+50.00

F.A.P. RTE.	SECTION	COUNTY	TOTAL SHEETS	SHEET NO.
116	D7 BRIDGE REPAIRS 2025-8	JASPER	25	11
ILLINOIS FED. AID PROJECT			CONTRACT NO. 74C57	



FOR BARRIER OFFSET AND TRAFFIC CLEAR WIDTH  
REFER TO SHEET 16 OF THE PLANS

REFER TO STANDARD 701321 FOR LOCATIONS AND SPACING  
OF RUMBLE STRIPS, SIGNS, AND DETECTOR LOOPS

MODEL: Stage I Construction - N. End Stage 1 [Sheet]  
 FILE NAME: c:\p\work\04\116\116m03\104\107\4C57-sht-1.dgn

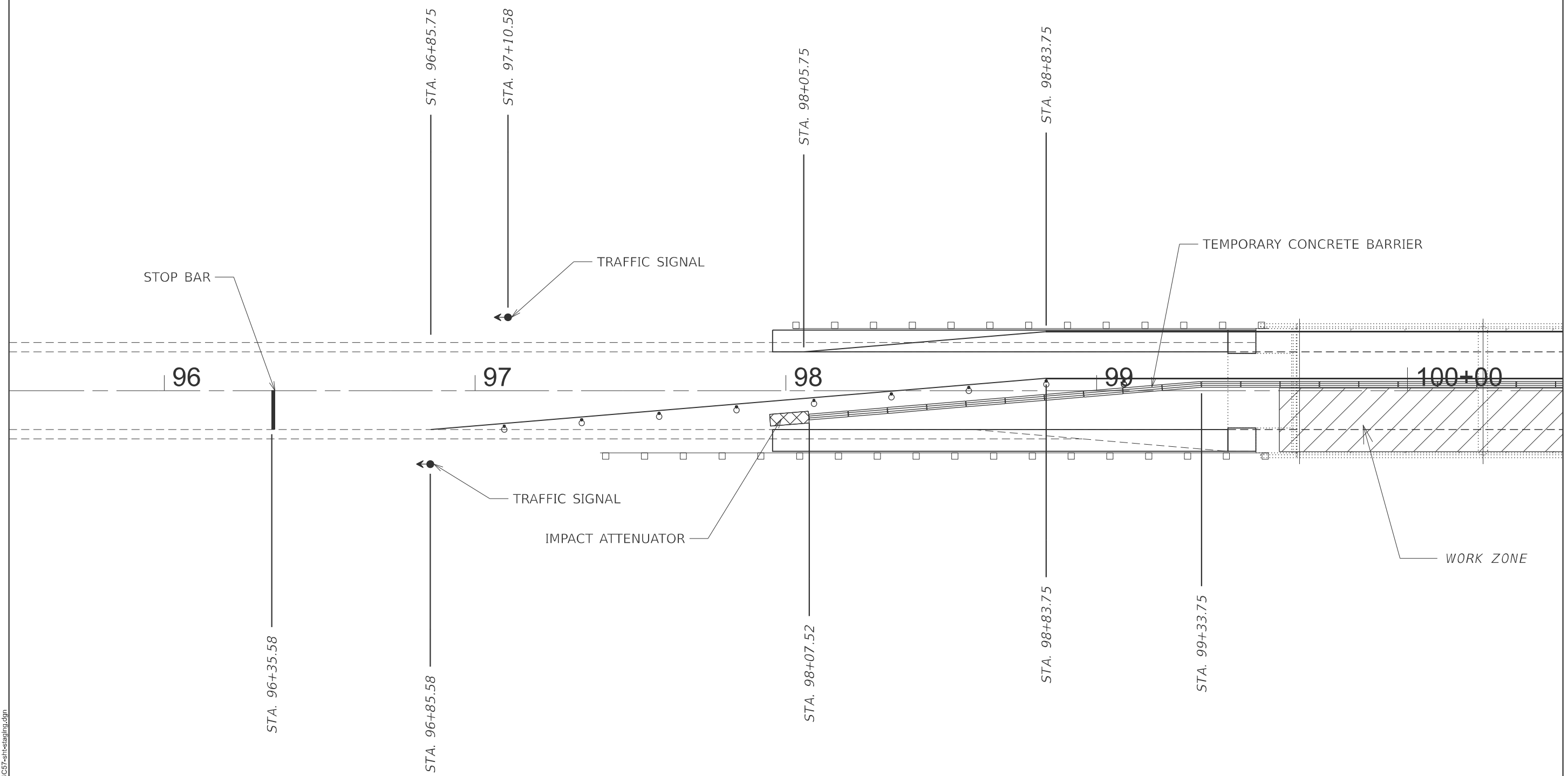
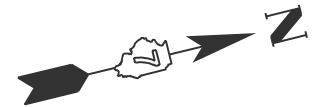
USER NAME = chase.blackerby	DESIGNED -	REVISED -
	DRAWN -	REVISED -
PLOT SCALE = \$SCALE\$	CHECKED -	REVISED -
PLOT DATE = 6/5/2024	DATE -	REVISED -

**STATE OF ILLINOIS**  
**DEPARTMENT OF TRANSPORTATION**

**STAGE I CONSTRUCTION**  
**(PLAN VIEW)**

SCALE: 1"=50'    SHEET 2 OF 6 SHEETS    STA. 100+50.00 TO STA. 105+50.00

F.A.P. RTE.	SECTION	COUNTY	TOTAL SHEETS	SHEET NO.
116	D7 BRIDGE REPAIRS 2025-8	JASPER	25	12
CONTRACT NO. 74C57				
ILLINOIS FED. AID PROJECT				



FOR BARRIER OFFSET AND TRAFFIC CLEAR WIDTH  
REFER TO SHEET 16 OF THE PLANS

REFER TO STANDARD 701321 FOR LOCATIONS AND SPACING  
OF RUMBLE STRIPS, SIGNS, AND DETECTOR LOOPS

MODEL: Stage II Construction - S\_End Stage 2 (Sheet)  
FILE NAME: c:\p\work\w04\in\m09109\41D774C57-sht-stage2.dgn

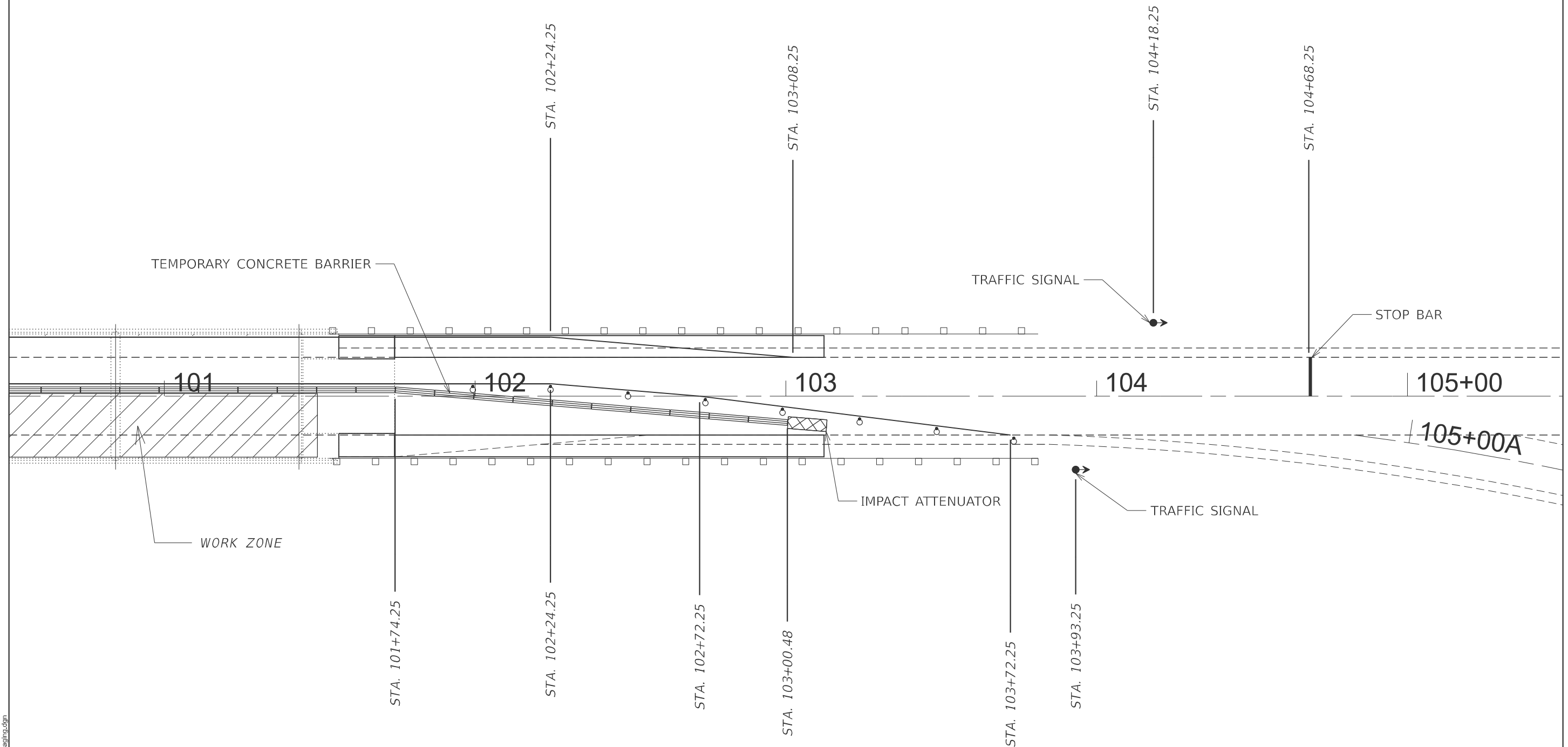
USER NAME = chase.blackerby	DESIGNED -	REVISED -
	DRAWN -	REVISED -
PLOT SCALE = \$SCALE\$	CHECKED -	REVISED -
PLOT DATE = 6/5/2024	DATE -	REVISED -

**STATE OF ILLINOIS  
DEPARTMENT OF TRANSPORTATION**

**STAGE 2 CONSTRUCTION  
(PLAN VIEW)**

SCALE: 1"=50'      SHEET 1 OF 6 SHEETS      STA. 95+50.00 TO STA. 100+50.00

F.A.P. RTE.	SECTION	COUNTY	TOTAL SHEETS	SHEET NO.
116	D7 BRIDGE REPAIRS 2025-8	JASPER	25	13
CONTRACT NO. 74C57				
ILLINOIS FED. AID PROJECT				



FOR BARRIER OFFSET AND TRAFFIC CLEAR WIDTH  
REFER TO SHEET 16 OF THE PLANS

REFER TO STANDARD 701321 FOR LOCATIONS AND SPACING  
OF RUMBLE STRIPS, SIGNS, AND DETECTOR LOOPS

MODEL: Stage II Construction - N\_End Stage 2 (Sheet)  
 FILE NAME: c:\p\work\dot\illm\m091094\10774C57-sht-est\stage2.dgn

USER NAME = chase.blackerby	DESIGNED -	REVISED -
	DRAWN -	REVISED -
PLOT SCALE = \$SCALE\$	CHECKED -	REVISED -
PLOT DATE = 6/5/2024	DATE -	REVISED -

**STATE OF ILLINOIS  
DEPARTMENT OF TRANSPORTATION**

**STAGE 2 CONSTRUCTION  
(PLAN VIEW)**

SCALE: 1"=50'    SHEET 2 OF 6 SHEETS    STA. 100+50.00    TO STA. 105+50.00

F.A.P. RTE.	SECTION	COUNTY	TOTAL SHEETS	SHEET NO.
116	D7 BRIDGE REPAIRS 2025-8	JASPER	25	14
CONTRACT NO. 74C57				
ILLINOIS FED. AID PROJECT				

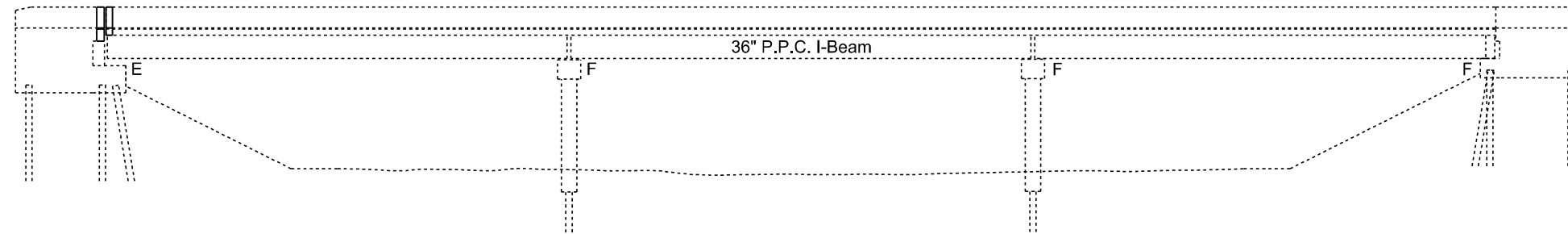
Structure 040-0019 carries ILL 130 over Embarras River Overflow. The three span, P.P.C I-beam structure was built in 1984. The proposed project consists of replacement of the expansion joint with a new strip seal, bridge deck scarification, and concrete overlay.

**DESIGN SPECIFICATIONS**

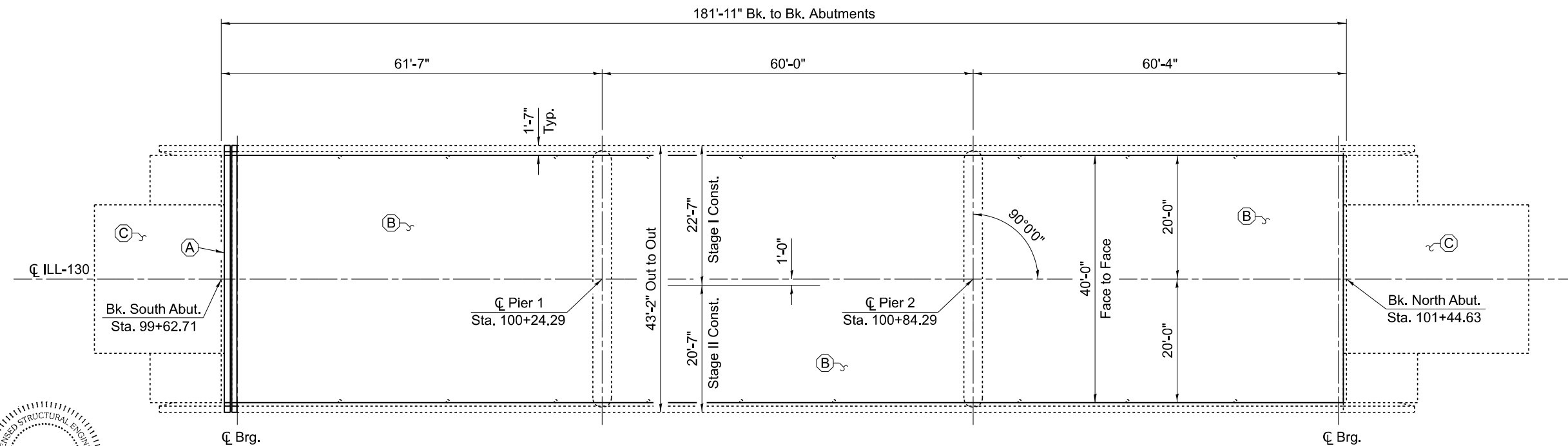
2002 AASHTO Standard Specifications for Highway Bridges

**DESIGN STRESSES**

$f_y = 60,000$  psi (Reinforcement)

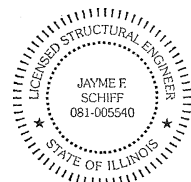


**ELEVATION**



**PLAN**

- (A) - Remove Existing Joint and Construct Strip Seal Expansion Joint
- (B) - Bridge Deck Scarification  $\frac{3}{4}$ " , Bridge Deck Fly Ash or GGBF Slag Concrete Overlay  $2\frac{1}{2}$ " , Diamond Grinding (Bridge Section) , & Bridge Deck Grooving (Longitudinal)
- (C) - Approach Slab Patching



EXPIRES 11-30-2024

*Jayme F. Schiff*

MODEL: D:\infra\... FILE NAME: ...

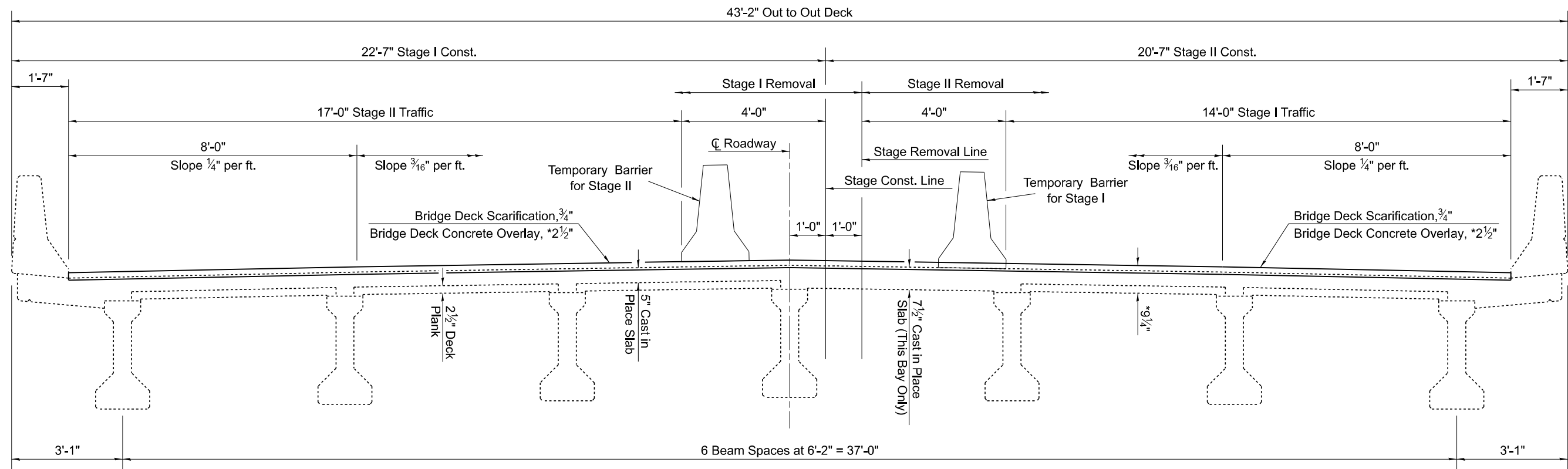
USER NAME =	DESIGNED - D. Lane	REVISED -
	DRAWN - D. Lane	REVISED -
PLOT SCALE = 100,000' / in.	CHECKED - D. Macklin	REVISED -
PLOT DATE = 6/14/2024	DATE - January 2024	REVISED -

**STATE OF ILLINOIS  
DEPARTMENT OF TRANSPORTATION**

**GENERAL PLAN & ELEVATION  
S.N. 040-0019**

SCALE: SHEET 1 OF 7 SHEETS STA. TO STA.

F.A.P. RTE.	SECTION	COUNTY	TOTAL SHEETS	SHEET NO.
116	D7 BRIDGE REPAIRS 2025-8	JASPER	25	15
CONTRACT NO. 74C57				
ILLINOIS FED. AID PROJECT				



**CROSS SECTION**

Looking North

**GENERAL NOTES**

Plan dimensions and details relative to existing structure have been taken from existing plans and are subject to nominal construction variations. The Contractor shall field verify existing dimensions and details affecting new construction and make necessary approved adjustments prior to construction or ordering of materials. Such variations shall not be cause for additional compensation for a change in scope of the work, however, the Contractor will be paid for the quantity actually furnished at the unit price bid for the work.

Reinforcement Bars designated (E) shall be epoxy coated.

Existing reinforcement bars extending into the removal area shall be cleaned, straightened and incorporated into the new construction. Any reinforcement bars that are damaged during concrete removal operations shall be replaced with an approved bar splicer or anchorage system. Cost included with CONCRETE REMOVAL.

Protective Coat to be applied to areas of new concrete only, including bridge deck concrete overlay.

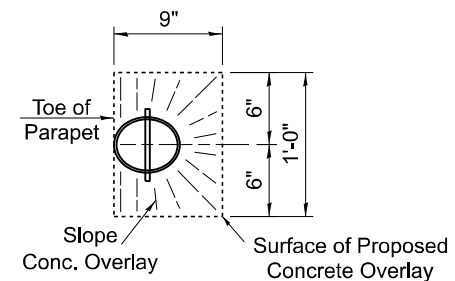
Joint openings shall be adjusted according to Article 520.04 of the Standard Specifications when the deck is poured at an ambient temperature other than 50°F.

Areas of approach slab repairs shown are estimated. The Engineer shall show actual locations of repair on as-built plans.

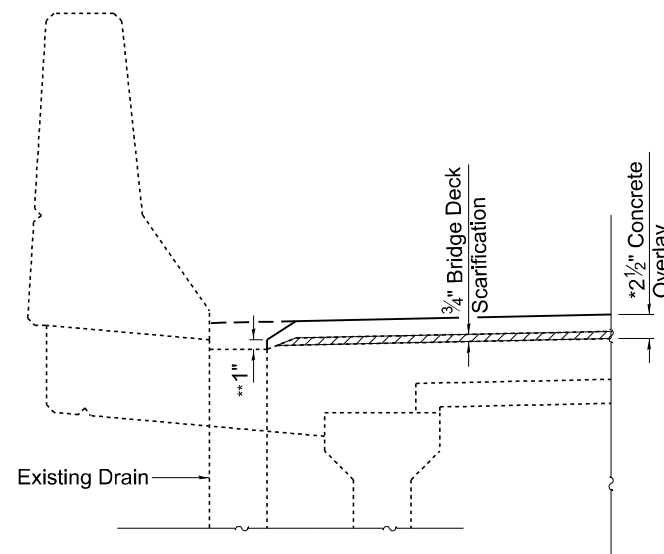
The majority of the existing bridge deck is constructed as a 5" thick cast-in-place reinforced slab overlaying 2 1/2" precast deck planks. Full depth deck slab repair shall be prohibited in portions of the deck with existing precast deck planks. If unsound concrete is found after bridge deck scarification and cleaning, these areas shall be repaired partial depth as specified in the Special Provision for Bridge Deck Fly Ash or GGBF Slag Concrete Overlay and paid for according to Article 109.04. The Contractor shall exercise extreme caution when removing concrete near existing precast deck planks. Any damage to the precast deck planks shall be repaired to the satisfaction of the Engineer at the Contractor's expense.

The Contractor shall use extreme care during concrete removal so as not to damage the PPC I-Beam.

\*Overlay thickness prior to 1/4" grinding (Typ.)



**TOP PLAN OF FLOOR DRAIN**



**FLOOR DRAIN PRESERVATION**

\*\* Minimum thickness of overlay at edge of drain = 1"

**TOTAL BILL OF MATERIAL**

ITEM	UNIT	QUANTITY
Concrete Removal	Cu. Yd.	3.4
Concrete Superstructure	Cu. Yd.	3.3
Reinforcement Bars, Epoxy Coated	Pound	600
Bar Splicers	Each	6
Bridge Deck Scarification, 3/4"	Sq. Yd.	795
Bridge Deck Fly Ash or GGBF Slag Concrete Overlay, 2 1/2"	Sq. Yd.	795
Diamond Grinding (Bridge Section)	Sq. Yd.	724
Bridge Deck Grooving (Longitudinal)	Sq. Yd.	478
Preformed Joint Strip Seal	Foot	42
Protective Coat	Sq. Yd.	805
Approach Slab Repair (Partial Depth)	Sq. Yd.	2.0

MODEL: D:\info\... FILE NAME: ...

USER NAME =	DESIGNED - D. Lane	REVISED -
	DRAWN - D. Lane	REVISED -
PLOT SCALE = 100,000' / in.	CHECKED - D. Macklin	REVISED -
PLOT DATE = 6/14/2024	DATE - January 2024	REVISED -

**STATE OF ILLINOIS  
DEPARTMENT OF TRANSPORTATION**

**STAGE CONSTRUCTION, GENERAL NOTES, &  
BILL OF MATERIALS S.N. 040-0019**

SCALE: SHEET 2 OF 7 SHEETS STA. TO STA.

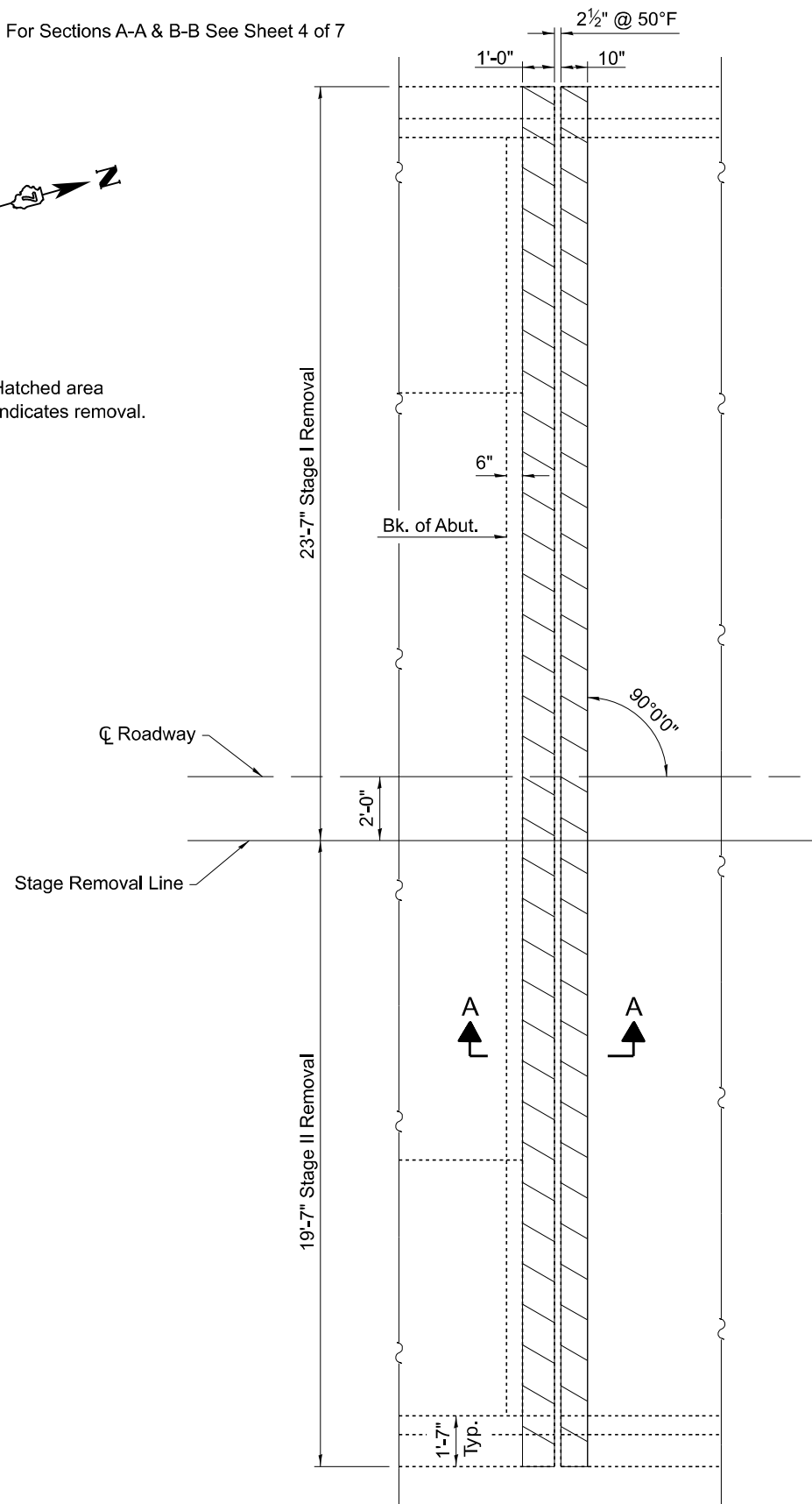
F.A.P. RTE.	SECTION	COUNTY	TOTAL SHEETS	SHEET NO.
116	D7 BRIDGE REPAIRS 2025-8	JASPER	25	16
CONTRACT NO. 74C57				
ILLINOIS FED. AID PROJECT				



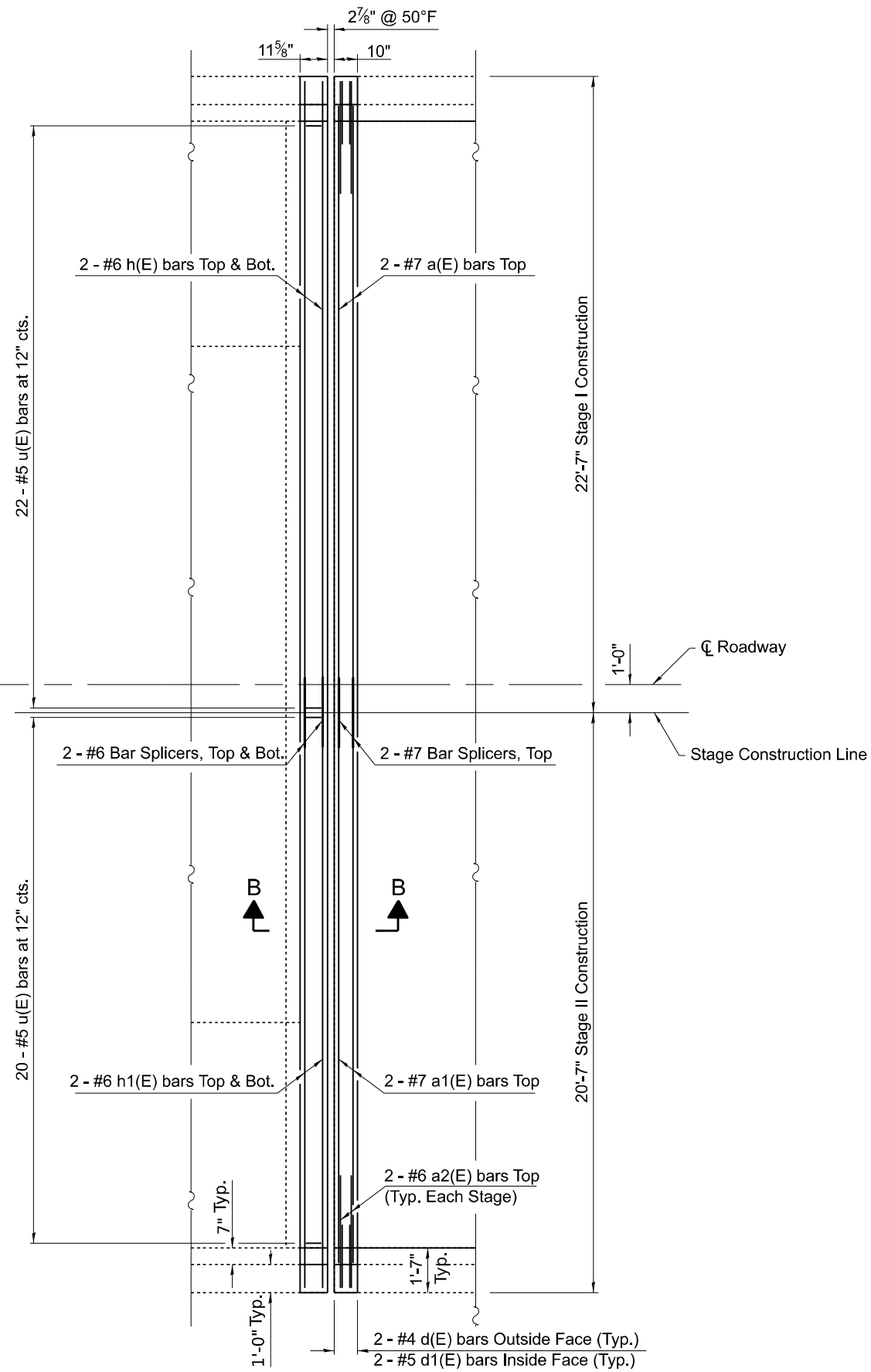
For Sections A-A & B-B See Sheet 4 of 7



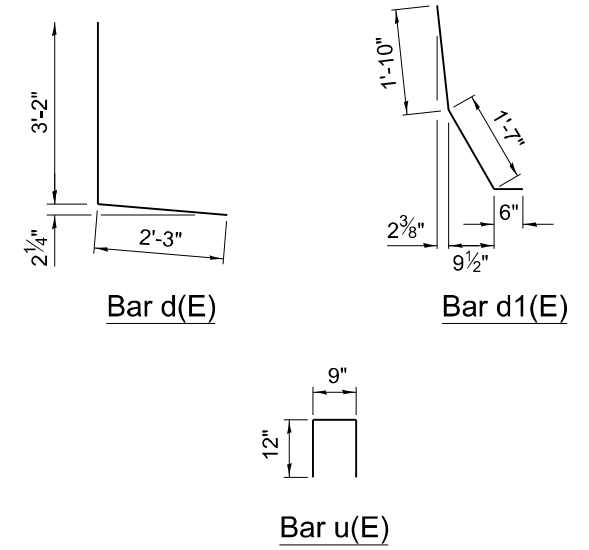
Note: Hatched area indicates removal.



**REMOVAL PLAN**  
South Abutment Only



**REINFORCEMENT PLAN**  
South Abutment Only



**BILL OF MATERIAL - SOUTH ABUTMENT**

Bar	No.	Size	Length	Shape
a(E)	2	#7	21'-3"	—
a1(E)	2	#7	19'-3"	—
a2(E)	4	#6	4'-0"	—
d(E)	4	#4	5'-5"	L
d1(E)	4	#5	3'-11"	U
h(E)	4	#6	22'-3"	—
h1(E)	4	#6	20'-3"	—
u(E)	42	#5	2'-9"	U
ITEM		UNIT	QUANTITY	
Concrete Removal		Cu. Yd.	3.4	
Concrete Superstructure		Cu. Yd.	3.3	
Reinforcement Bars, Epoxy Coated		Pound	600	
Bar Splicers		Each	6	

MODEL: D:\info\...  
 FILE NAME: ...  
 PROJECT: ...  
 DATE: 6/14/2024

USER NAME =	DESIGNED - D. Lane	REVISED -
	DRAWN - D. Lane	REVISED -
PLOT SCALE = 100,000' / in.	CHECKED - D. Macklin	REVISED -
PLOT DATE = 6/14/2024	DATE - January 2024	REVISED -

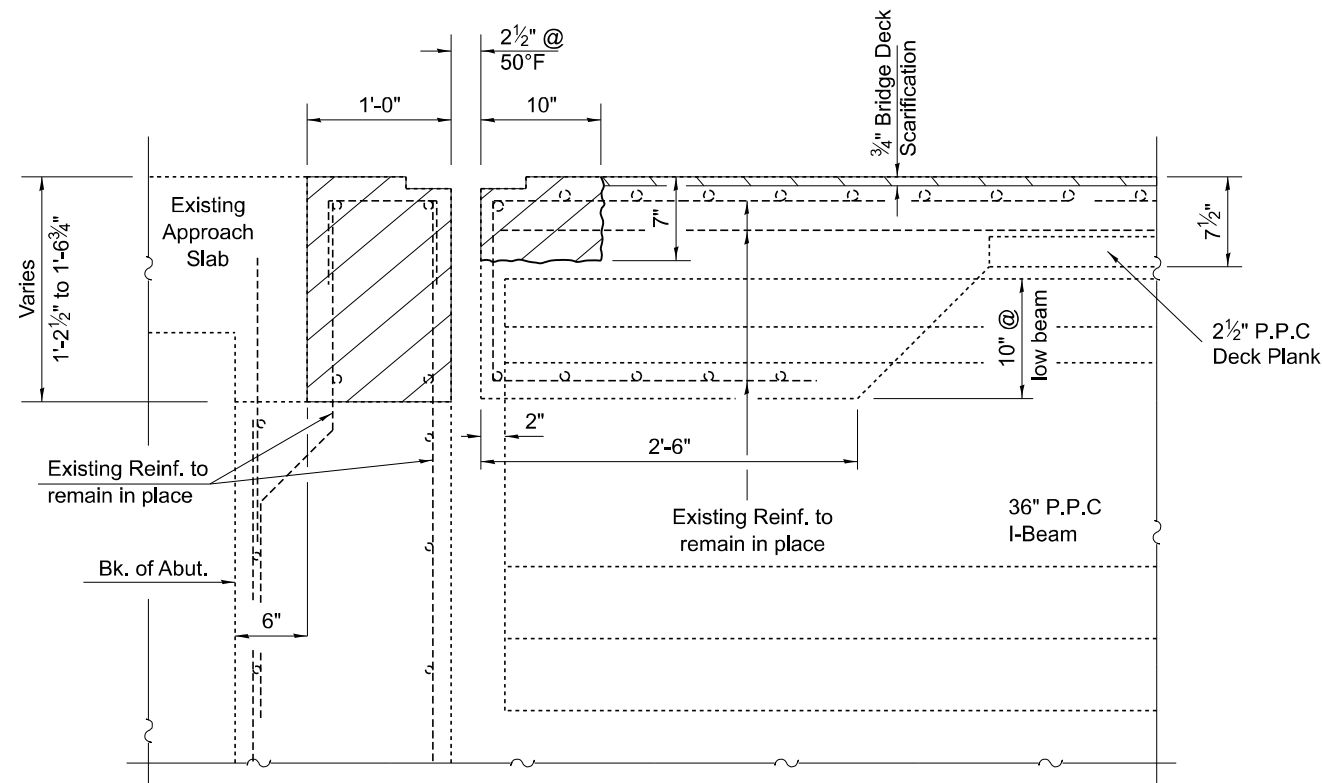
**STATE OF ILLINOIS**  
**DEPARTMENT OF TRANSPORTATION**

**EXPANSION JOINT REPLACEMENT DETAILS**  
**SOUTH JOINT - S.N. 040-0019**

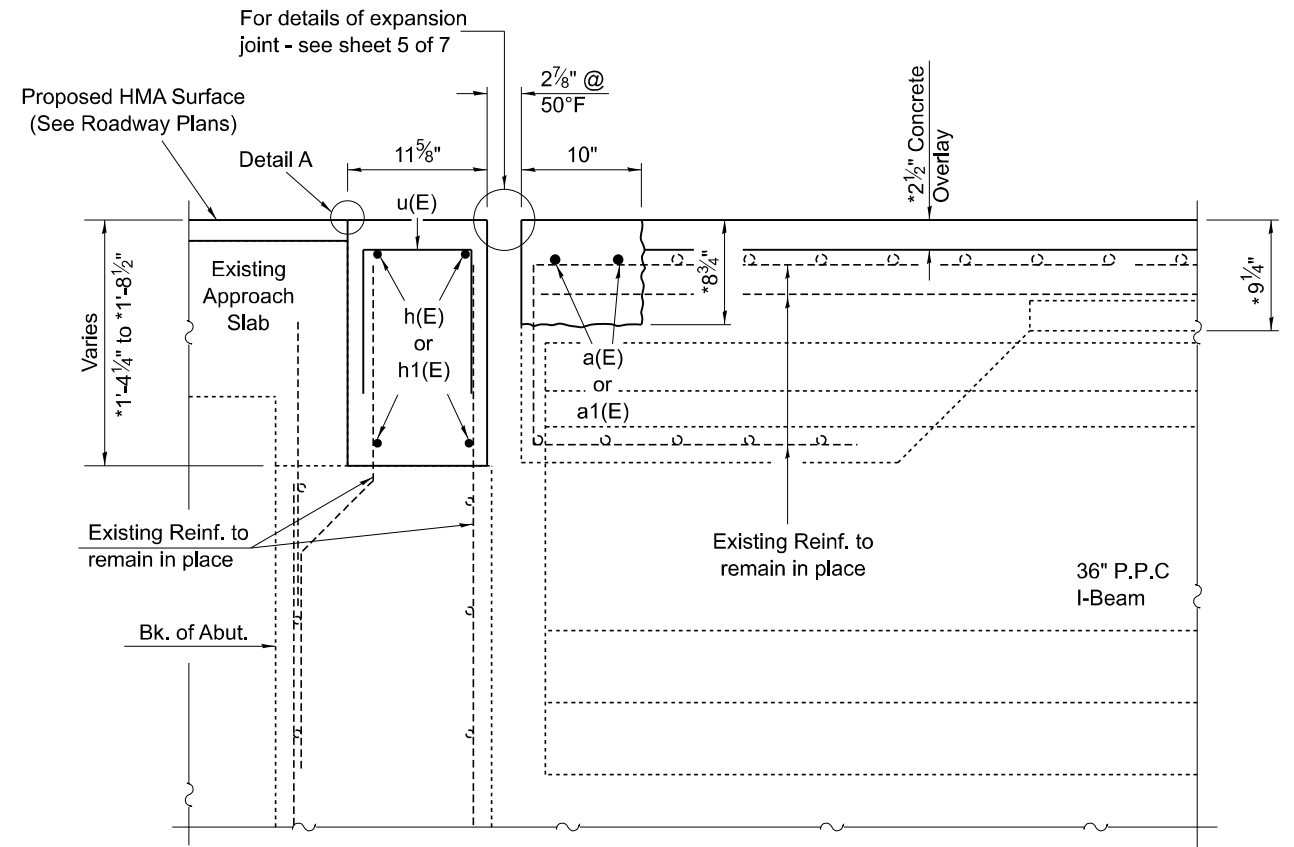
SCALE: SHEET 3 OF 7 SHEETS STA. TO STA.

F.A.P. RTE.	SECTION	COUNTY	TOTAL SHEETS	SHEET NO.
116	D7 BRIDGE REPAIRS 2025-8	JASPER	25	17
CONTRACT NO. 74C57				
ILLINOIS FED. AID PROJECT				

Note: Hatched area indicates removal.

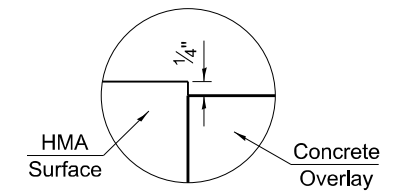


SECTION A-A

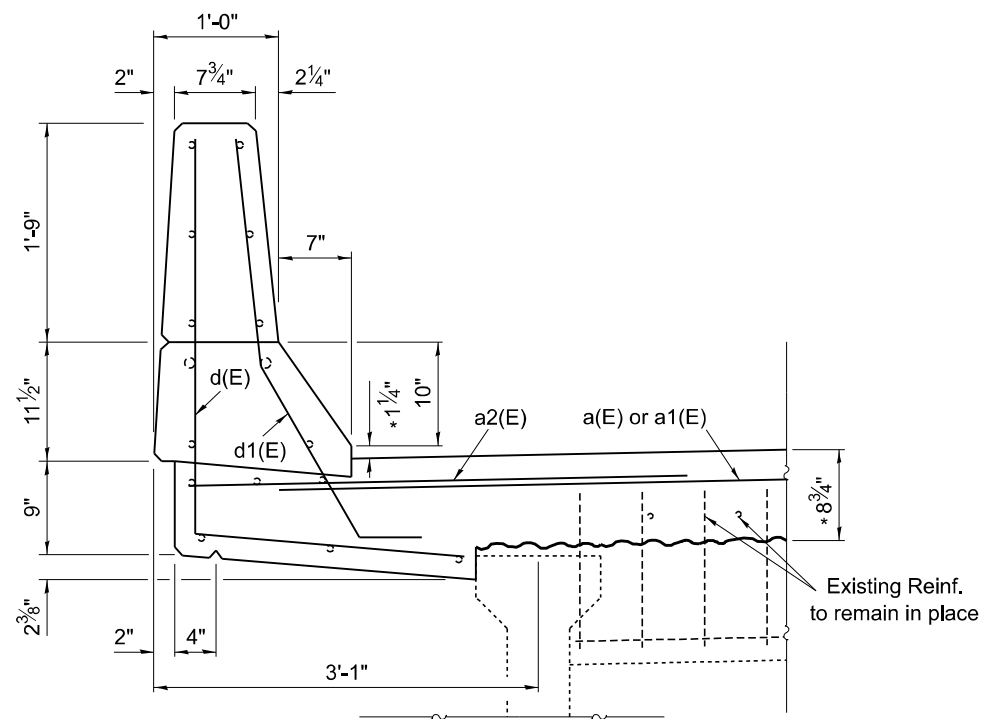


SECTION B-B

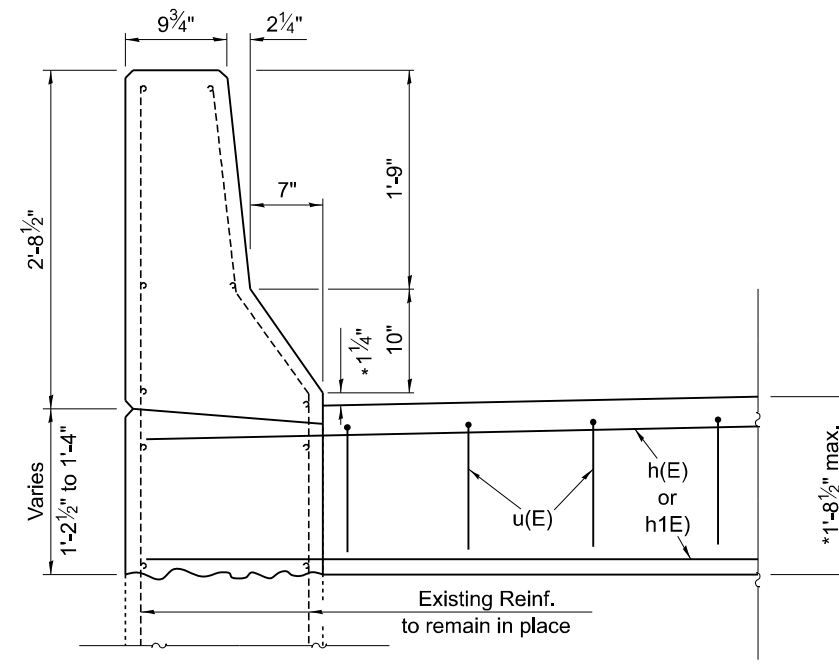
\* Overlay thickness prior to 1/4" grinding (Typ.)



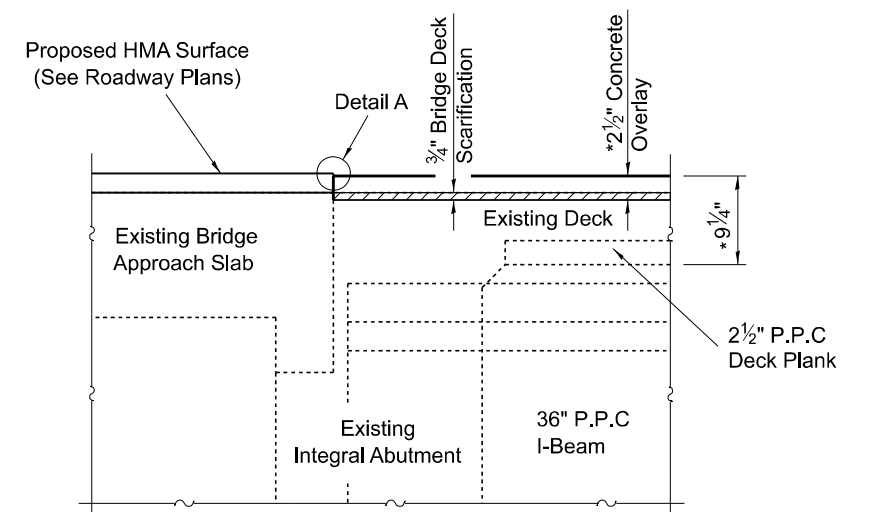
DETAIL A



SECTION THRU DECK PARAPET  
South Abutment Only



SECTION THRU APPROACH PARAPET  
South Abutment Only



SECTION THRU NORTH ABUT.

MODEL: D:\infra\...  
 FILE NAME: ...  
 PLOT DATE: 6/14/2024

USER NAME =	DESIGNED - D. Lane	REVISED -
	DRAWN - D. Lane	REVISED -
PLOT SCALE = 100,000' / 1"	CHECKED - D. Macklin	REVISED -
PLOT DATE = 6/14/2024	DATE - January 2024	REVISED -

STATE OF ILLINOIS  
DEPARTMENT OF TRANSPORTATION

SUPERSTRUCTURE DETAILS  
S.N. 040-0019

SCALE: SHEET 4 OF 7 SHEETS STA. TO STA.

F.A.P. RTE.	SECTION	COUNTY	TOTAL SHEETS	SHEET NO.
116	D7 BRIDGE REPAIRS 2025-8	JASPER	25	18
CONTRACT NO. 74C57				
ILLINOIS FED. AID PROJECT				

**GENERAL NOTES**

The strip seal shall be made continuous and shall have a minimum thickness of 1/4". The configuration of the strip seal shall match the configuration of the locking edge rails. Open or "webbed" strip seal gland configurations are not permitted. The gland shall be sized for a maximum rated movement of 4 inches.

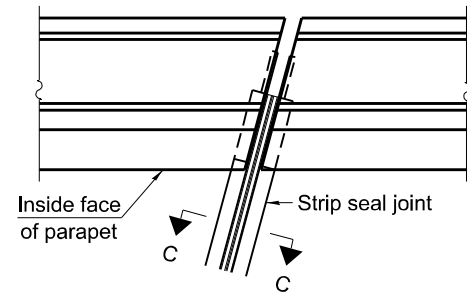
The locking edge rails depicted are configured for typical applications and are conceptual only. The actual configuration of the locking edge rails and matching strip seal may vary from manufacturer to manufacturer provided they fit the application and meet the minimum anchorage shown. Flanged edge rails, however, will not be allowed. Locking edge rails may exceed the 4 1/2" maximum depth provided the anchorage system is revised according to the manufacturer's recommendation.

The manufacturer's recommended installation methods shall be followed.

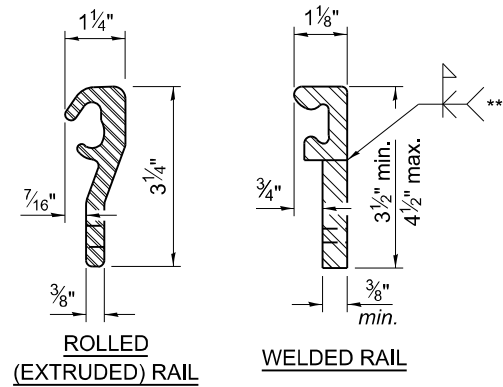
All steel components shall be galvanized after fabrication according to Article 520.03 of the Standard Specifications.

The Maximum space between locking edge rail segments shall be 3/16" and sealed with a suitable sealant; however, any rail joint within 10' measured perpendicular to the face of the curb or parapet shall be welded as shown in the locking edge rail splice detail.

The concrete opening below the strip seal will vary based on the locking edge rail chosen by the Contractor. Deck and parapet lengths shown elsewhere in the plans are dimensioned to the concrete opening, not the joint opening, and are based on the rolled locking edge rail. If the Contractor elects to use a different locking edge rail, dimensional adjustments may be required. One exception to this would be the strip seal joint at the end of the precast bridge approach slab. For these cases the pavement connector length shall be adjusted, not the length of the bridge approach slab.

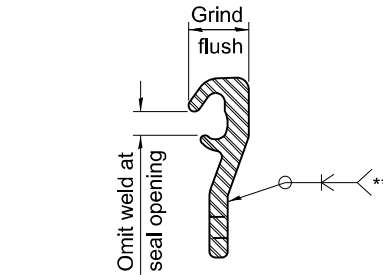


**PLAN AT PARAPET**



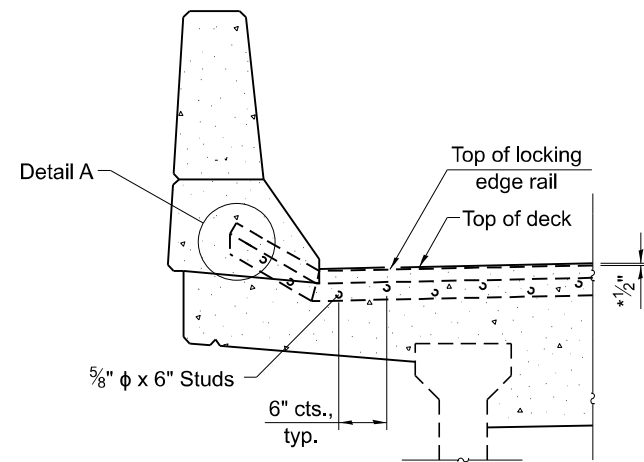
**LOCKING EDGE RAILS**

\*\*\* Back gouge not required if complete joint penetration is verified by mock-up.

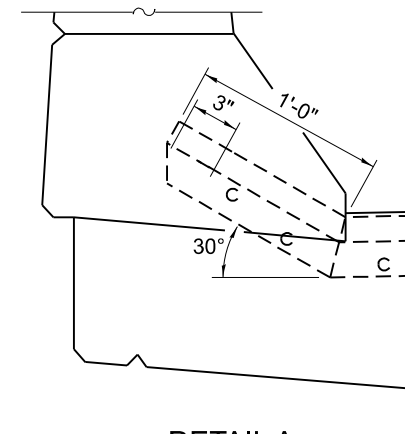


**LOCKING EDGE RAIL SPLICE**

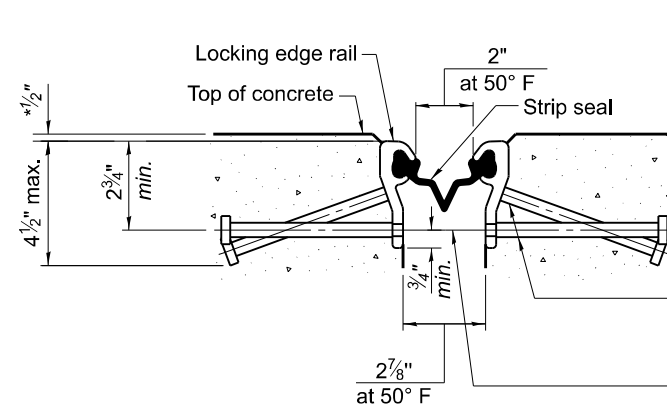
The inside of the locking edge rail groove shall be free of weld residue. Rolled rail shown, welded rail similar.



**ELEVATION AT PARAPET**

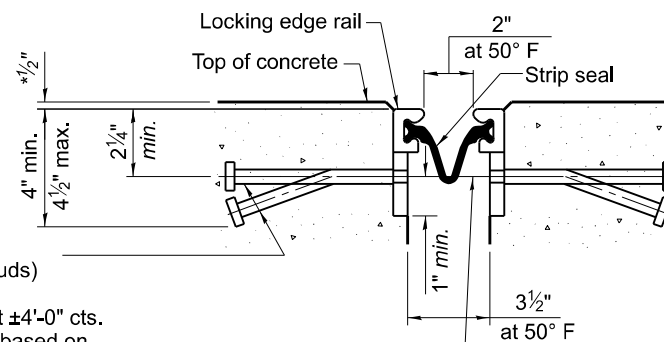


**DETAIL A**



**SHOWING ROLLED RAIL JOINT**

\* Thickness prior to 1/4" grinding (Typ.)



**SHOWING WELDED RAIL JOINT**

\*\* 5/8" φ x 6" studs @ 6" cts. (alternate angled/bent studs with horizontal studs)

3/8" φ threaded rods in 7/16" φ holes at ±4'-0" cts. for holding the proper joint opening based on the temperature during the deck pour. Place to miss studs. All rods shall be burned, or sawed off flush with the plates after concrete is set.

**SECTION C-C**

\*\* Granular or solid flux filled headed studs conforming to Article 1006.32 of the Std. Specs., automatically end welded.

**BILL OF MATERIAL**

Item	Unit	Total
Preformed Joint Strip Seal	Foot	42

MODEL: Detail FILE NAME: ...

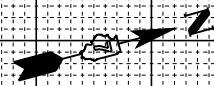
USER NAME =	DESIGNED - D. Lane	REVISED -
	DRAWN - D. Lane	REVISED -
PLOT SCALE = 100,000' / in.	CHECKED - D. Macklin	REVISED -
PLOT DATE = 5/3/2024	DATE - January 2024	REVISED -

**STATE OF ILLINOIS  
DEPARTMENT OF TRANSPORTATION**

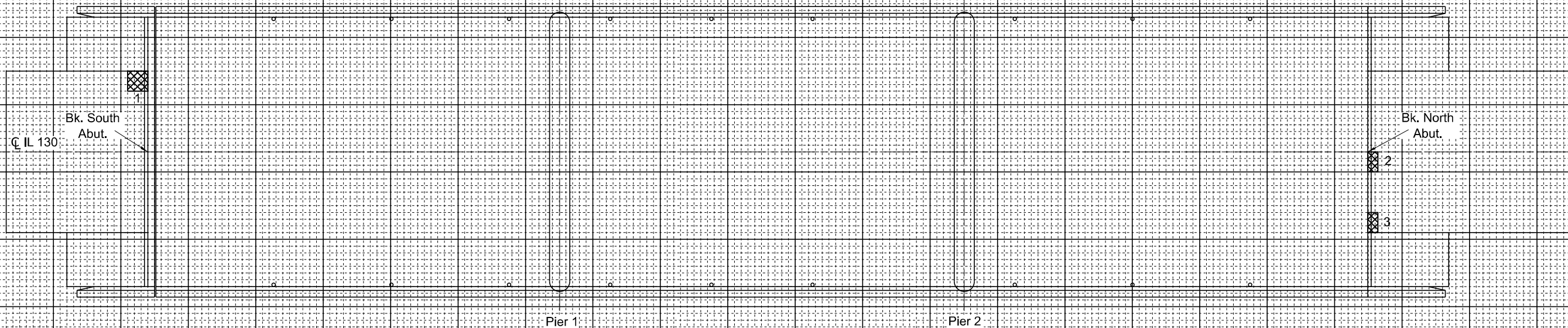
**PREFORMED JOINT STRIP SEAL DETAIL  
S.N. 040-0019**

SCALE: SHEET 5 OF 7 SHEETS STA. TO STA.

F.A.P. RTE.	SECTION	COUNTY	TOTAL SHEETS	SHEET NO.
116	D7 BRIDGE REPAIRS 2025-8	JASPER	25	19
CONTRACT NO. 74C57				
ILLINOIS		FED. AID PROJECT		



040-0019 Approach Patching



PATCH NO.	SIZE		APPROACH REPAIR (PART. DEPTH) SQ YD
	LENGTH	WIDTH	
1	3.0	3.0	1.0
2	1.5	3.0	0.5
3	1.5	3.0	0.5
TOTAL ROUNDS TO:			2.0

THE LOCATIONS AND SIZES SHOWN GRAPHICALLY ABOVE ARE APPROXIMATE. SEE THIS TABLE FOR ACTUAL SIZES.



DATE OF SURVEY: 12-20-23  
 SURVEY BY: DPM & DRL  
 METHOD OF SURVEY: VISUAL

ESTIMATED PAY QUANTITIES:

APPROACH SLAB PATCHING (PARTIAL DEPTH)  
 2.0 SQ YD

MODEL: D:\deliul... FILE NAME: p:\deliul... PROJECT: 040-0019 Bridge Repair Plans.dgn

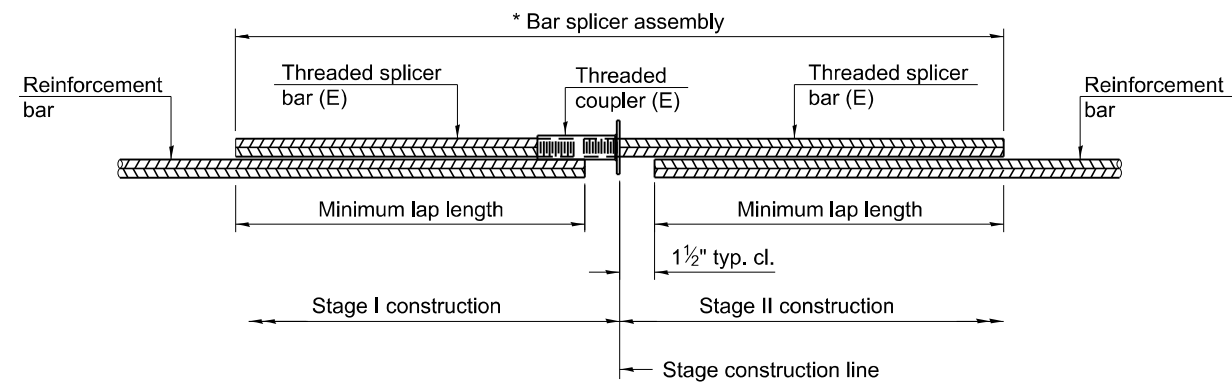
USER NAME =	DESIGNED - D. Lane	REVISED -
	DRAWN - D. Lane	REVISED -
PLOT SCALE = 100,000' / in.	CHECKED - D. Macklin	REVISED -
PLOT DATE = 5/3/2024	DATE - January 2024	REVISED -

STATE OF ILLINOIS  
 DEPARTMENT OF TRANSPORTATION

APPROACH PATCHING  
 S.N. 040-0019

SCALE: SHEET 6 OF 7 SHEETS STA. TO STA.

F.A.P. RTE.	SECTION	COUNTY	TOTAL SHEETS	SHEET NO.
116	D7 BRIDGE REPAIRS 2025-8	JASPER	25	20
CONTRACT NO. 74C57				
ILLINOIS		FED. AID PROJECT		



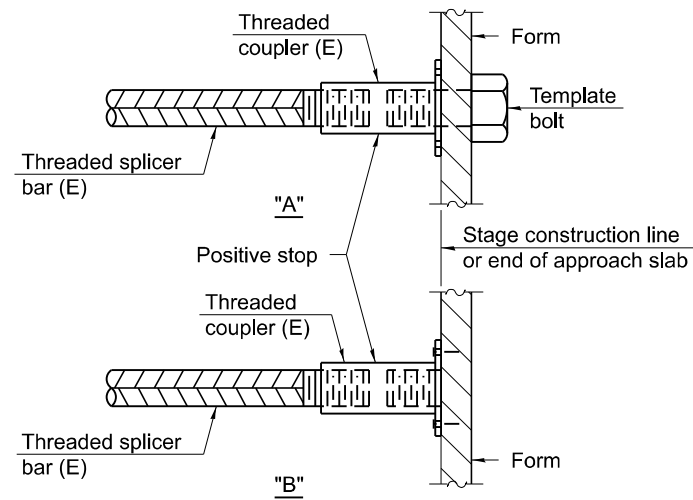
**STANDARD BAR SPLICER ASSEMBLY PLAN**

Only bar splicer assemblies as presented on the approved QPL list may be used.

Threaded splicer bar length = min. lap length + 1 1/2" + thread length

\* Epoxy not required on Bar Splicer Assembly components used in conjunction with black bars.

Location	Bar Size	No. assemblies required	Minimum lap length
Deck	#7	2	5'-2"
Approach	#6	4	4'-0"

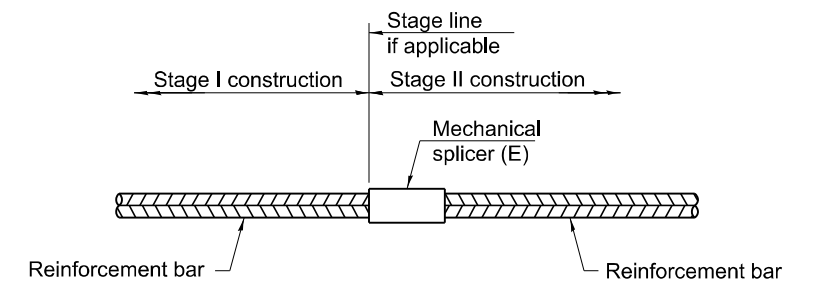


**INSTALLATION AND SETTING METHODS**

"A" : Set bar splicer assembly by means of a template bolt.

"B" : Set bar splicer assembly by nailing to wood forms or cementing to steel forms.

(E) : Indicates epoxy coating.



**STANDARD MECHANICAL SPLICER**

Location	Bar Size	No. assemblies required

**Notes:**

Splicer bars shall be deformed with threaded ends and have a minimum 60 ksi yield strength.

All reinforcement shall be lapped and tied to the splicer bars. Bar splicer assemblies shall be epoxy coated according to the requirements for reinforcement bars. See Section 508 of the Standard Specifications.

See approved list of bar splicer assemblies and mechanical splicers for alternatives.

BSD-1

5-15-2023

MODEL: D:\in\it...  
 FILE NAME: ...  
 PROJECT: ...  
 DATE: ...

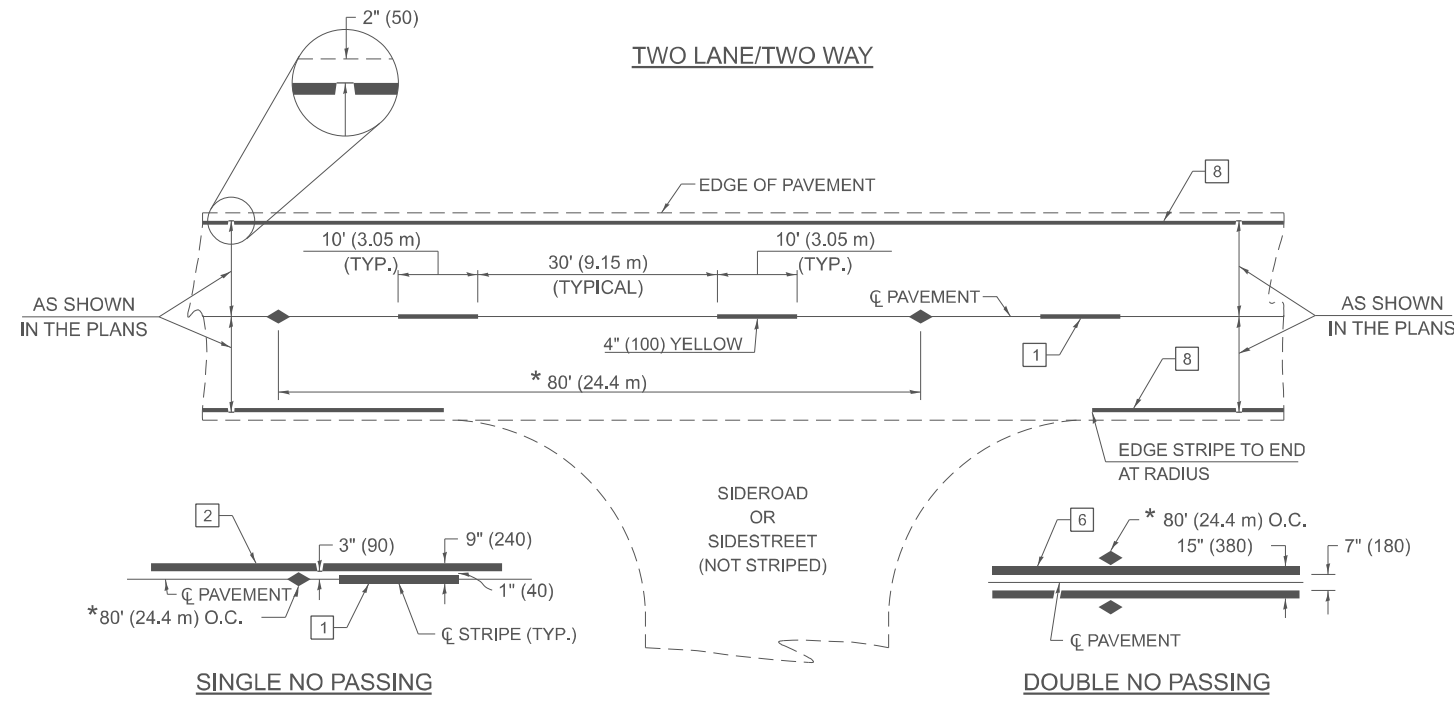
USER NAME =	DESIGNED - D. Lane	REVISED -
	DRAWN - D. Lane	REVISED -
PLOT SCALE = 100,000' / in.	CHECKED - D. Macklin	REVISED -
PLOT DATE = 6/14/2024	DATE - January 2024	REVISED -

**STATE OF ILLINOIS  
DEPARTMENT OF TRANSPORTATION**

**BAR SPLICER ASSEMBLY AND MECHANICAL SPLICER DETAILS**  
**S.N. 040-0019**

SCALE: SHEET 7 OF 7 SHEETS STA. TO STA.

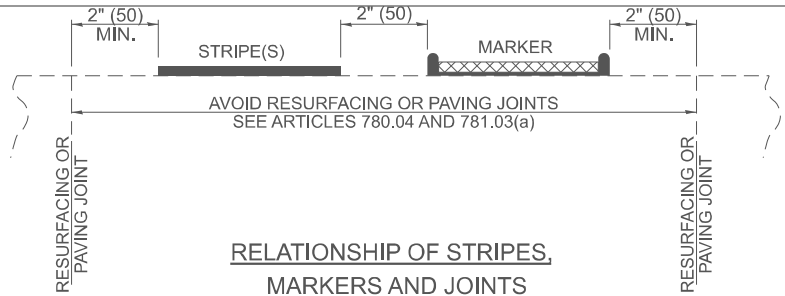
F.A.P. RTE.	SECTION	COUNTY	TOTAL SHEETS	SHEET NO.
116	D7 BRIDGE REPAIRS 2025-8	JASPER	25	21
CONTRACT NO. 74C57				
ILLINOIS FED. AID PROJECT				



\* REDUCE TO 40' (12.2 m) O.C. ON CURVES WITH POSTED OR ADVISORY SPEEDS OF 45 mph (70 km/h) OR LESS.

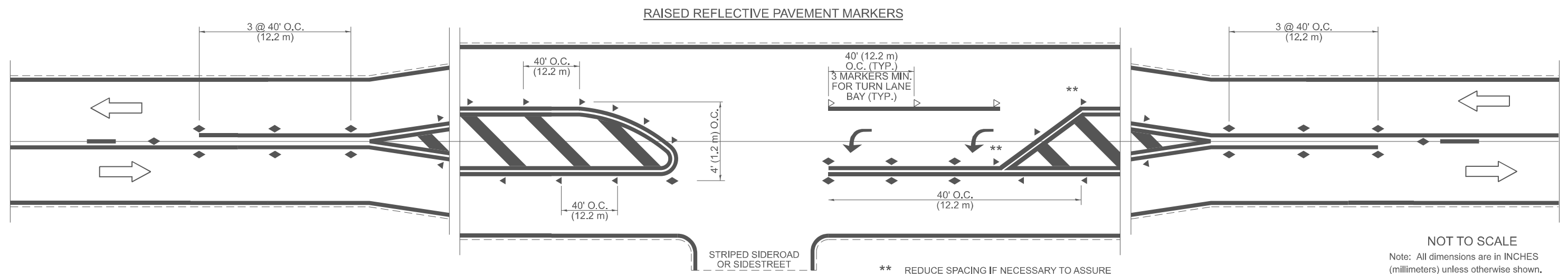
**PAVEMENT MARKING LEGEND**

- 1 4" (100) SKIP-DASH (YELLOW)
  - 2 4" (100) SOLID (YELLOW)
  - 3 12" (300) DIAGONAL (YELLOW)
  - 4 4" (100) DOUBLE YELLOW (NARROW)
  - 5 12" (300) SOLID WHITE
  - 6 4" (100) DOUBLE YELLOW (WIDE)
  - 7 6" (150) SKIP-DASH (WHITE)
  - 8 4" (100) SOLID (WHITE)
  - 9 12" (300) DIAGONAL (WHITE)
  - 10 6" (150) SOLID (WHITE)
  - 11 24" (600) STOP BAR (WHITE)
  - 12 8" (200) SOLID (WHITE)
  - 13 4" (100) PARKING WHITE
- 



**TYPICAL PAVEMENT MARKERS LEGEND**

- ◆ TWO-WAY AMBER MARKER
- ▶ ONE-WAY AMBER MARKER
- ▷ ONE-WAY CRYSTAL MARKER



\*\* REDUCE SPACING IF NECESSARY TO ASSURE MARKERS AT CORNER POINTS.

NOT TO SCALE  
Note: All dimensions are in INCHES (millimeters) unless otherwise shown.

MODEL: 78000001-1 | Sheet | FILE NAME: c:\p\work\wv\hille\m\091094\AD774C57-sh1-details.dgn

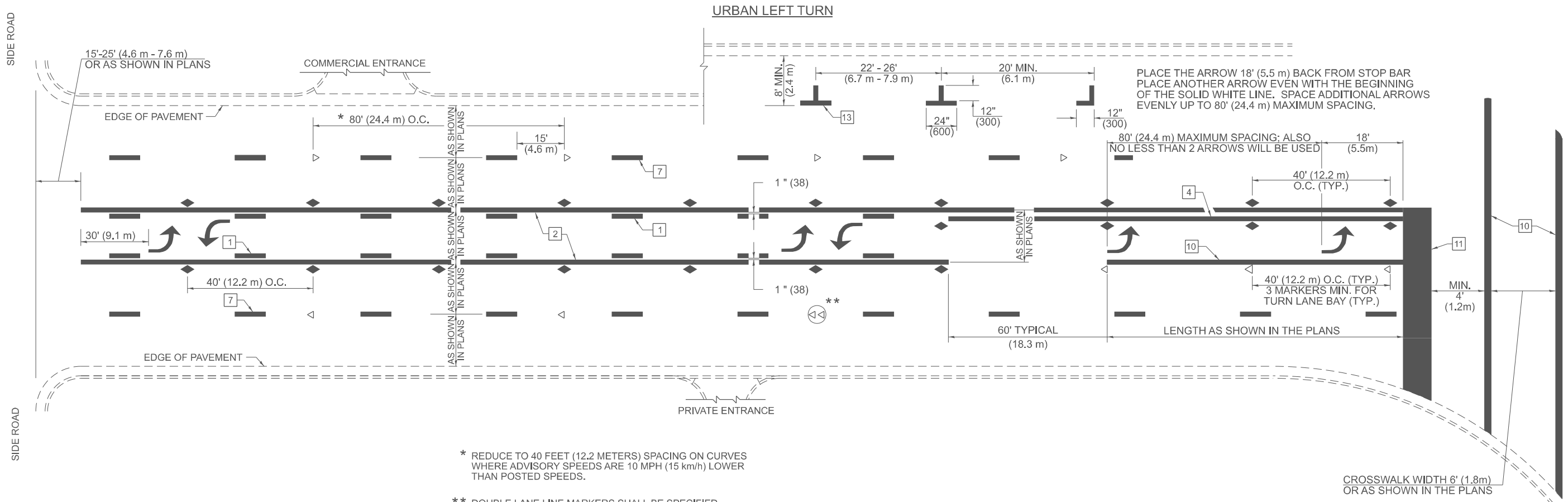
USER NAME = Leah.Hille	DESIGNED -	REVISED -
	DRAWN -	REVISED -
	CHECKED -	REVISED -
PLOT DATE = 6/26/2024	DATE -	REVISED -

**STATE OF ILLINOIS  
DEPARTMENT OF TRANSPORTATION**

**PAVEMENT MARKING AND RAISED REFLECTIVE PAVEMENT MARKERS  
(RURAL & URBAN APPLICATIONS)**

SCALE: SHEET 1 OF 4 SHEETS STA. TO STA.

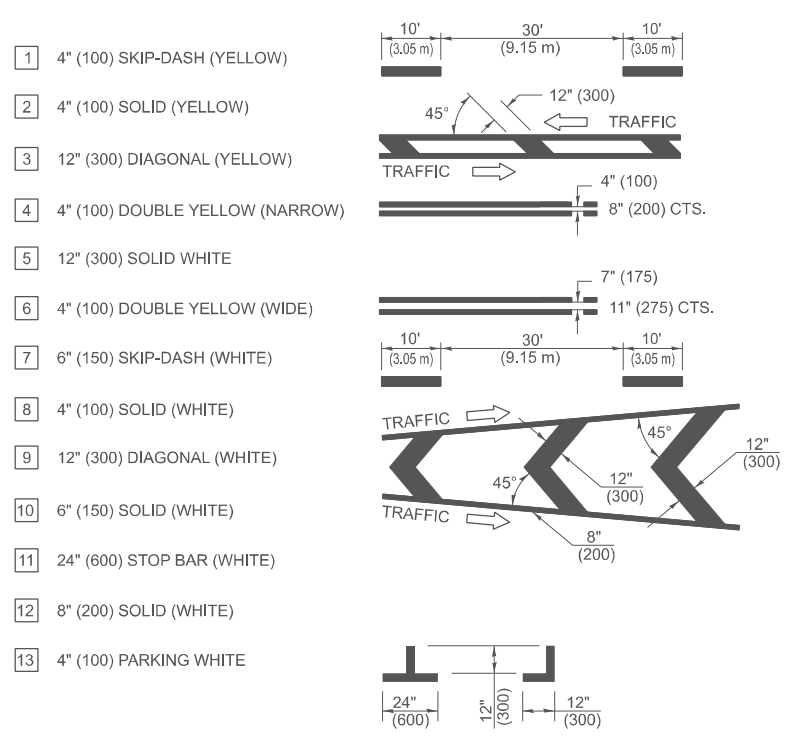
<b>DISTRICT 7 DETAIL NO. 78000001</b>				
F.A.P. RTE.	SECTION	COUNTY	TOTAL SHEETS	SHEET NO.
116	D7 BRIDGE REPAIRS 2025-8	JASPER	25	22
CONTRACT NO. 74C57				
ILLINOIS FED. AID PROJECT				



\* REDUCE TO 40 FEET (12.2 METERS) SPACING ON CURVES WHERE ADVISORY SPEEDS ARE 10 MPH (15 km/h) LOWER THAN POSTED SPEEDS.

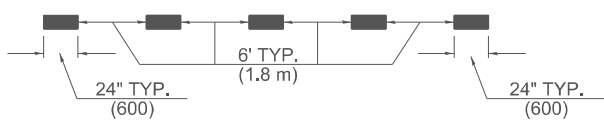
\*\* DOUBLE-LANE-LINE MARKERS SHALL BE SPECIFIED AND SPACED AS SHOWN IN HIGHWAY STANDARD 781001 FOR MULTI-LANE DIVIDED AND UNDIVIDED HIGHWAYS.

**PAVEMENT MARKING LEGEND**

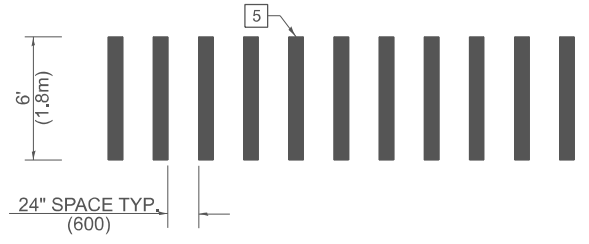


**GENERAL NOTES**

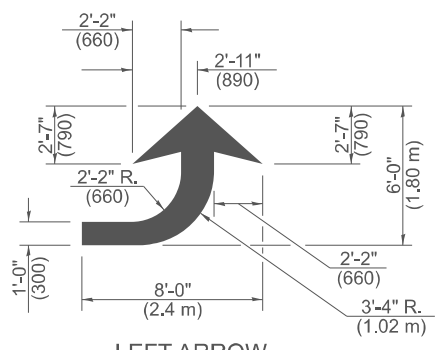
1. TURN ARROW PAIRS SHALL BE PLACED AT 250'(75 m) INTERVALS AND SHALL BE EVENLY SPACED BETWEEN BOTH ENDS OF THE BIDIRECTIONAL LEFT TURN LANE. USE A MINIMUM OF TWO PAIRS PER BLOCK.
2. THE SOLID YELLOW PAVEMENT MARKINGS [2] SHOULD GENERALLY START OR END NEAR THE RADIUS POINT OF EACH STREET RETURN EXCEPT WHERE ONE OR BOTH ENDS WOULD INCLUDE STOP BARS.
3. THE SKIP-DASH PAVEMENT MARKINGS [1] OR [7] SHOULD BE CENTERED BETWEEN BOTH ENDS OF EACH CITY BLOCK AND SHALL BE PLACED SO THEY LINE UP ACROSS FROM EACH OTHER.
4. USE LARGE ARROW SIZE FOR BOTH RURAL AND URBAN LOCATIONS. (SEE SECTION 780 FOR SYMBOLS TABLE)
5. LANE LINE EXTENSIONS SHALL BE THE SAME COLOR AND WIDTH AS THE LANE LINE BEING EXTENDED.
6. ALL WHITE SKIP-DASH LINES SHALL BE 6" IN WIDTH.



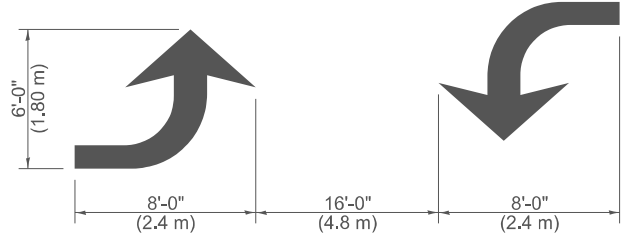
**LANE LINE EXTENSIONS**



**CROSSWALK DETAIL (DECATUR CITY LIMITS ONLY)**



**LEFT ARROW**  
REVERSE FOR RIGHT ARROW  
AREA = 15.6 SQ. FT. (1.47 m<sup>2</sup>) (WHITE)



**TYPICAL DOUBLE TURN ARROWS (WHITE)**

NOT TO SCALE

Note: All dimensions are in INCHES (millimeters) unless otherwise shown.

**DISTRICT 7 DETAIL NO. 78000001**

USER NAME = Leah.Hille	DESIGNED -	REVISED -
	DRAWN -	REVISED -
	CHECKED -	REVISED -
PLOT DATE = 6/26/2024	DATE -	REVISED -

**STATE OF ILLINOIS  
DEPARTMENT OF TRANSPORTATION**

**PAVEMENT MARKING AND RAISED REFLECTIVE PAVEMENT MARKERS (RURAL & URBAN APPLICATIONS)**

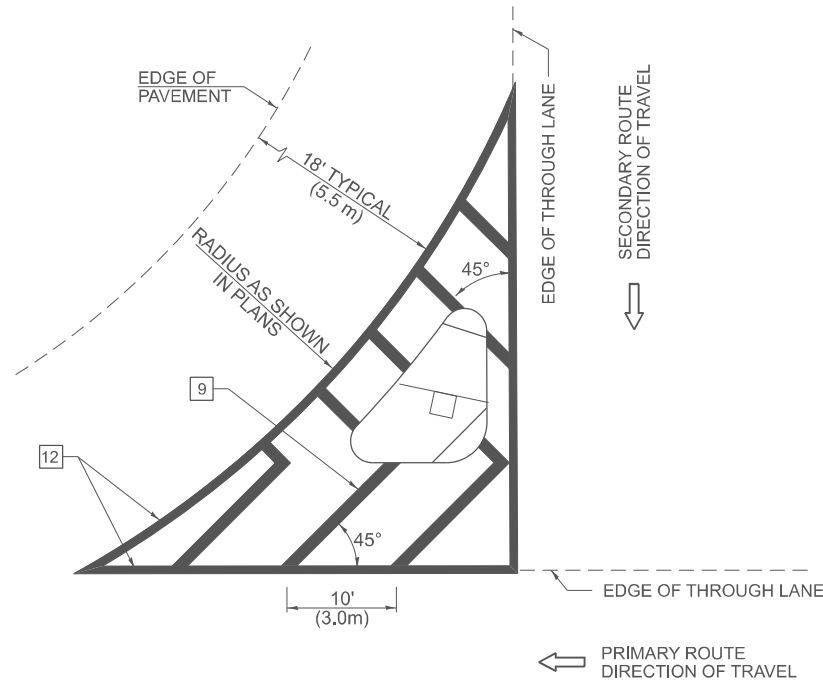
SCALE: SHEET 2 OF 4 SHEETS STA. TO STA.

F.A.P. RTE.	SECTION	COUNTY	TOTAL SHEETS	SHEET NO.
116	D7 BRIDGE REPAIRS 2025-8	JASPER	25	23
CONTRACT NO. 74C57				
ILLINOIS FED. AID PROJECT				

MODEL: 78000001-2 (Sheet)  
FILE NAME: c:\p\work\wv\hille\m\091094\AD774C57-sh1-detail.dgn

**ISLANDS**

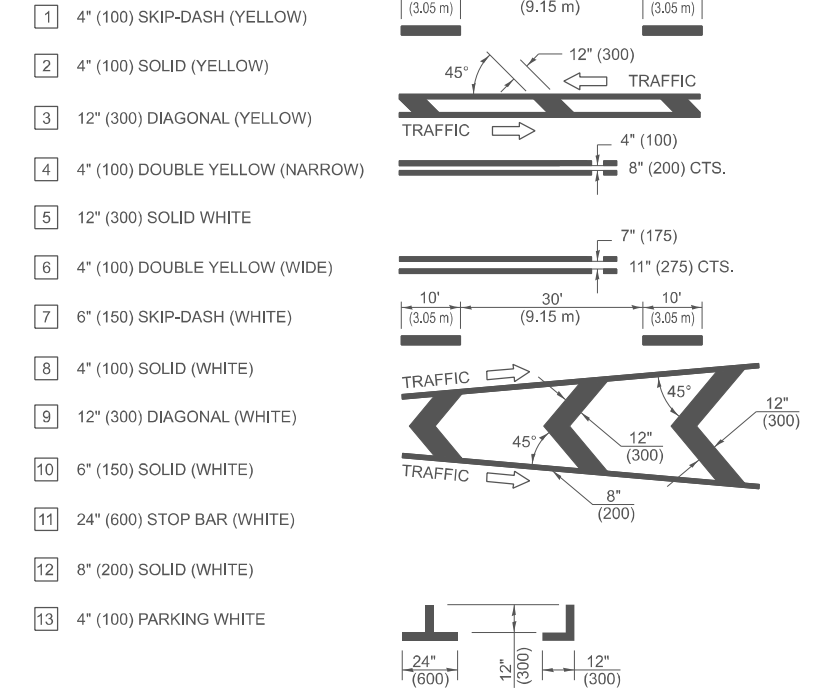
**OPTION 1**



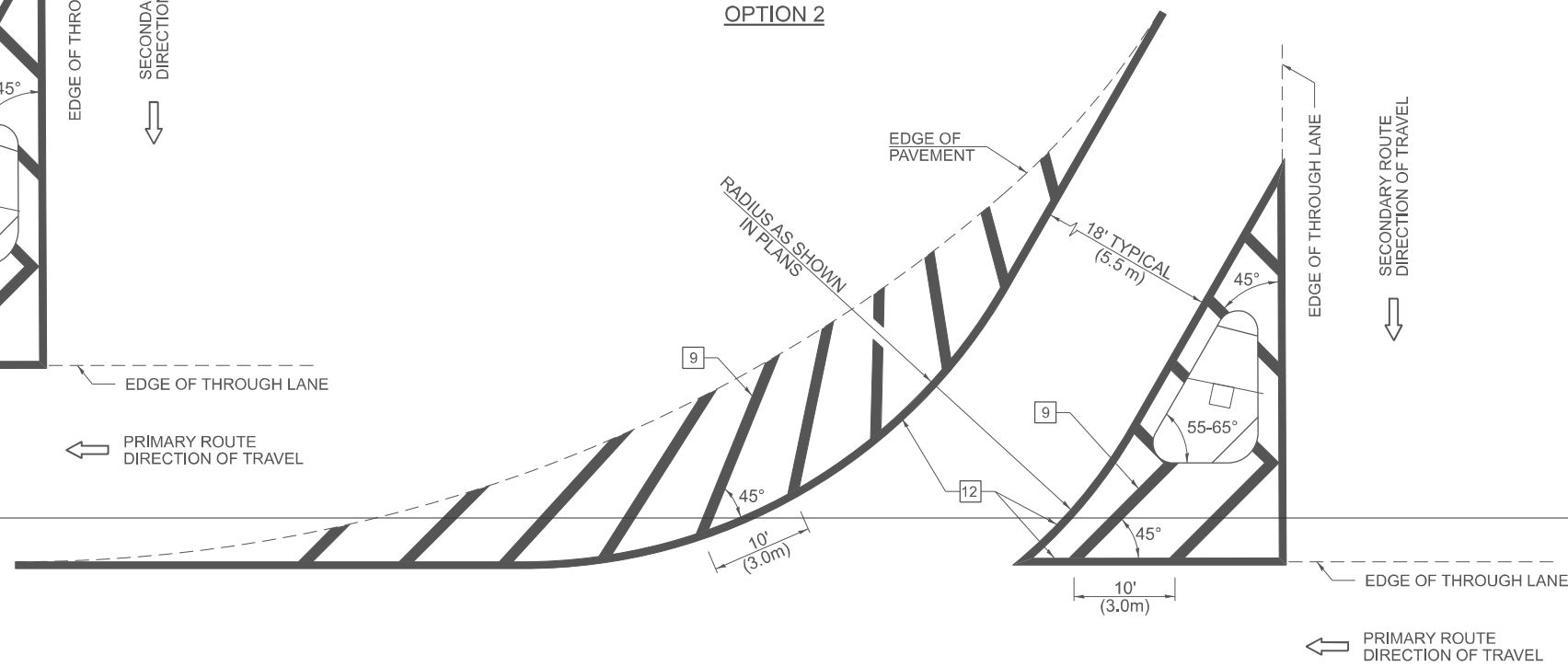
**GENERAL NOTES**

1. RAISED AND CORRUGATED MEDIANS SHALL BE OUTLINED WITH [2].
2. SOME OF THE INFORMATION INCLUDED WITH THIS DETAIL MAY NOT BE APPLICABLE TO THIS IMPROVEMENT.
3. PAVEMENT MARKINGS ARE TO BE EXTENDED THROUGH OMISSIONS WHEN APPLICABLE.
4. FINAL PAVEMENT MARKINGS SHALL BE IN PLACE PRIOR TO PLACING ANY RAISED REFLECTIVE PAVEMENT MARKERS.
5. THE FOLLOWING CRITERIA SHALL BE USED FOR SELECTING THE DIAGONAL PAVEMENT MARKING SPACING:
  - <30 MPH (<50 km/h) 15' (4.5 m)
  - 30-45 MPH (50-75 km/h) 20' (6.0 m)
  - >45 MPH (>75 km/h) 30' (9.0 m)
6. THE USE OF ISLAND STRIPING OPTION 1 OR OPTION 2 SHALL BE AS SHOWN ON THE PLANS.

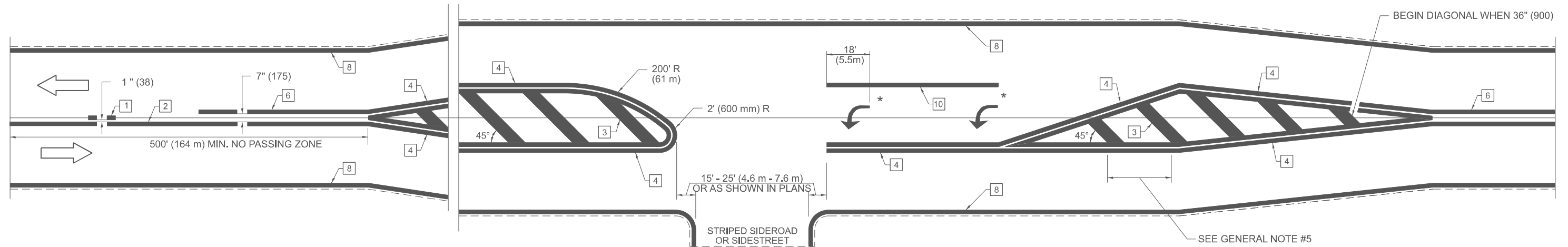
**PAVEMENT MARKING LEGEND**



**OPTION 2**



**RURAL LEFT TURN STRIPING**



\* PLACE AN ARROW 18' (5.5 m) BACK FROM END OF THE SOLID WHITE LINE. PLACE ANOTHER ARROW EVEN WITH THE BEGINNING OF THE SOLID WHITE LINE. SPACE ADDITIONAL ARROWS EVENLY UP TO 80' (24.4 m) MAXIMUM SPACING. USE MINIMUM OF 2 ARROWS.

NOT TO SCALE

Note: All dimensions are in INCHES (millimeters) unless otherwise shown.

MODEL: 78000001-3 (Sheet)  
FILE NAME: c:\pwworking\hillel\m091094\1774C57-sh1-detail.dgn

USER NAME = Leah.hille	DESIGNED -	REVISED -
	DRAWN -	REVISED -
	CHECKED -	REVISED -
PLOT DATE = 6/26/2024	DATE -	REVISED -

**STATE OF ILLINOIS  
DEPARTMENT OF TRANSPORTATION**

**PAVEMENT MARKING AND RAISED REFLECTIVE PAVEMENT MARKERS  
(RURAL & URBAN APPLICATIONS)**

SCALE: SHEET 3 OF 4 SHEETS STA. TO STA.

<b>DISTRICT 7 DETAIL NO. 78000001</b>				
F.A.P. RTE.	SECTION	COUNTY	TOTAL SHEETS	SHEET NO.
116	D7 BRIDGE REPAIRS 2025-8	JASPER	25	24
CONTRACT NO. 74C57				
ILLINOIS FED. AID PROJECT				

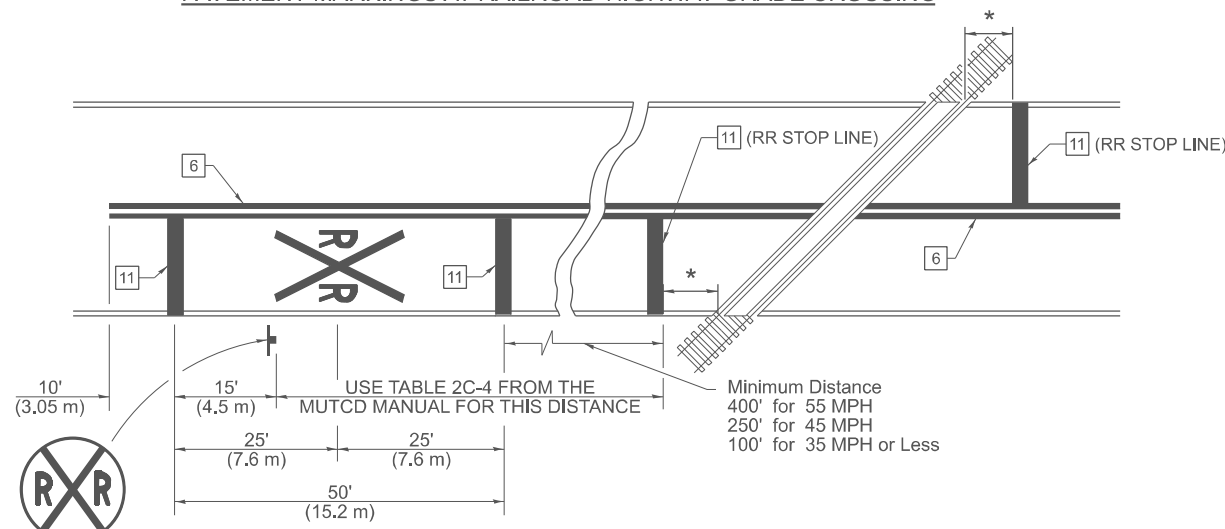


# SUPPLEMENTAL PAVEMENT MARKING TREATMENT FOR RAILROAD-HIGHWAY GRADE CROSSING

## PAVEMENT MARKING LEGEND

- 1 4" (100) SKIP-DASH (YELLOW)
  - 2 4" (100) SOLID (YELLOW)
  - 3 12" (300) DIAGONAL (YELLOW)
  - 4 4" (100) DOUBLE YELLOW (NARROW)
  - 5 12" (300) SOLID WHITE
  - 6 4" (100) DOUBLE YELLOW (WIDE)
  - 7 6" (150) SKIP-DASH (WHITE)
  - 8 4" (100) SOLID (WHITE)
  - 9 12" (300) DIAGONAL (WHITE)
  - 10 6" (150) SOLID (WHITE)
  - 11 24" (600) STOP BAR (WHITE)
  - 12 8" (200) SOLID (WHITE)
  - 13 4" (100) PARKING WHITE
- 

### PAVEMENT MARKINGS AT RAILROAD-HIGHWAY GRADE CROSSING

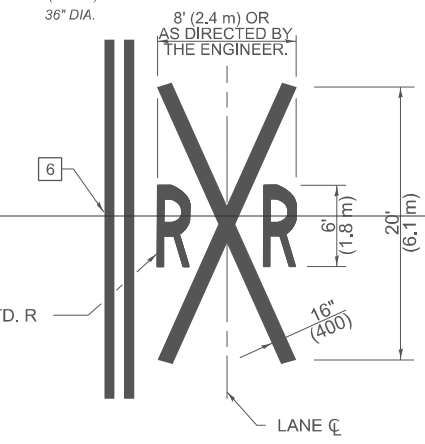


### NOTES

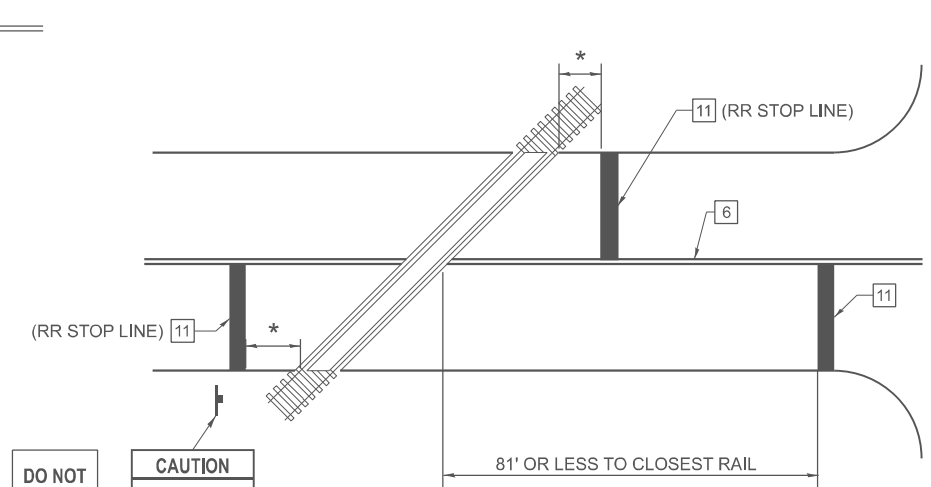
THE TRAVERSE SPREAD OF THE "X" MAY VARY ACCORDING TO LANE WIDTH.

ON MULTI-LANE ROADS, THE STOP LINES SHALL EXTEND ACROSS ALL APPROACH LANES AND SEPARATE RXX SYMBOLS SHALL BE PLACED ADJACENT TO EACH OTHER IN EACH LANE.

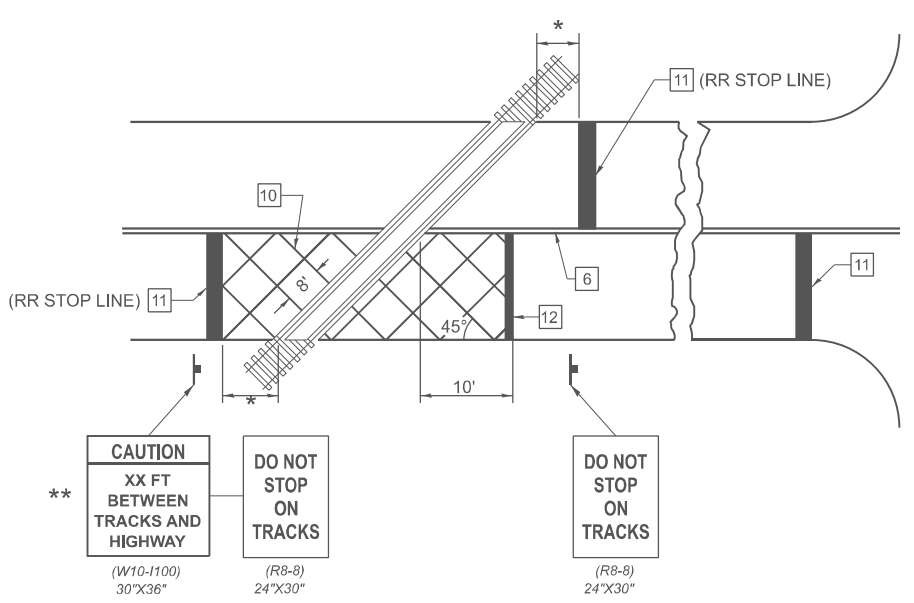
WHEN THE PAVEMENT MARKING SYMBOL IS USED, A PORTION OF THE SYMBOL SHOULD BE LOCATED DIRECTLY ADJACENT TO THE ADVANCE WARNING SIGN (W10-1) AS PLACED BY TABLE II-1, CONDITION B OF THE MUTCD.



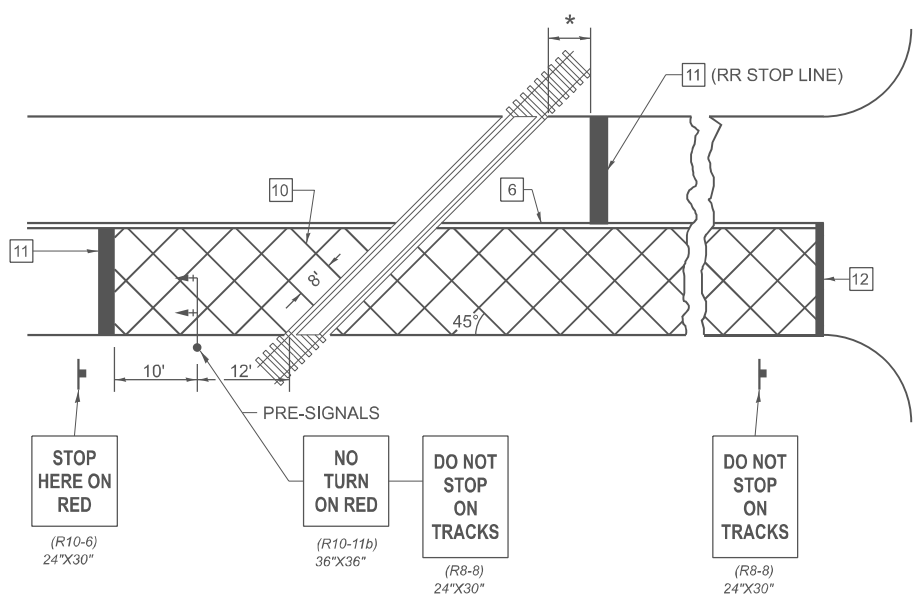
### RAILROAD CROSSING WITH NON-SIGNALIZED INTERSECTION



### RAILROAD CROSSING WITH INTERCONNECT ONLY

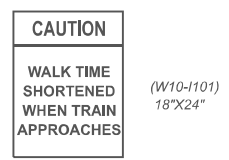


### RAILROAD CROSSING WITH INTERCONNECT AND PRE-SIGNALS



### GENERAL NOTES

- SUPPLEMENTAL PAVEMENT MARKINGS TO BE INSTALLED ONLY ON APPROACHES TO INTERSECTIONS CONTROLLED BY TRAFFIC SIGNALS WHICH ARE INTERCONNECTED WITH THE RAILROAD WARNING SIGNALS.
  - EXTEND PAVEMENT MARKINGS TO THE INTERSECTION ONLY WHERE PRE-SIGNALS ARE USED.
  - WHEN PEDESTRIAN SIGNALS ARE PRESENT WITH INTERCONNECTED SIGNALS, WARNING SIGN W10-1101 (18"X24") SHALL BE PLACED NEAR EACH PEDESTRIAN SIGNAL HEAD. COUNTDOWN PEDESTRIAN SIGNAL HEADS SHALL NOT BE UTILIZED ALONG WITH INTERCONNECTED SIGNALS.
  - PLEASE REFER TO THE IDOT BUREAU OF OPERATION MEMO OPS T-06 DATED DECEMBER 1, 2020 FOR ADDITIONAL INFORMATION
- \* 15' FROM NEAR RAIL OR 8' FROM AND PARALLEL TO GATE IF PRESENT
  - \*\* WARNING SIGN W10-1100 SHALL BE USED AS AN INTERIM MEASURE AT INTERCONNECTED SIGNAL LOCATIONS WHERE PRE-SIGNALS ARE TO BE INSTALLED IN THE FUTURE. THIS SIGN SHALL BE REMOVED WHEN THE PRE-SIGNALS ARE INSTALLED AND THE PAVEMENT MARKINGS ARE EXTENDED TO THE INTERSECTION.



NOT TO SCALE

Note: All dimensions are in INCHES (millimeters) unless otherwise shown.

### DISTRICT 7 DETAIL NO. 78000001

MODEL: 78000001-1 (Sheet) FILE NAME: c:\pwworking\dot\hille\m\091094\41774C57-sh1-detaills.dgn

USER NAME = leah.hille	DESIGNED -	REVISED -
	DRAWN -	REVISED -
	CHECKED -	REVISED -
PLOT DATE = 6/26/2024	DATE -	REVISED -

STATE OF ILLINOIS  
DEPARTMENT OF TRANSPORTATION

PAVEMENT MARKING AND RAISED REFLECTIVE PAVEMENT MARKERS  
(RURAL & URBAN APPLICATIONS)

F.A.P. RTE.	SECTION	COUNTY	TOTAL SHEETS	SHEET NO.
116	D7 BRIDGE REPAIRS 2025-8	JASPER	25	25
CONTRACT NO. 74C57				
ILLINOIS FED. AID PROJECT				

SCALE: SHEET 4 OF 4 SHEETS STA. TO STA.