

STATE OF ILLINOIS  
DEPARTMENT OF TRANSPORTATION

F.A.P. RTE.	SECTION	COUNTY	TOTAL SHEETS	SHEET NO.
832	D7 BRIDGE REPAIRS 2025-9	CLARK	16	1
		ILLINOIS	CONTRACT NO. 74C58	

FOR INDEX OF SHEETS, SEE SHEET NO. 2

ADT = 725 (2023)

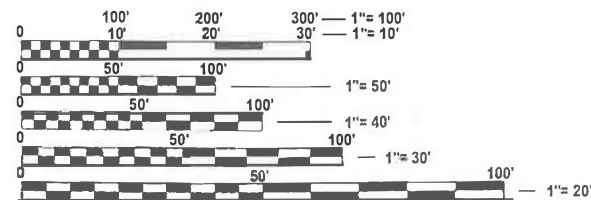
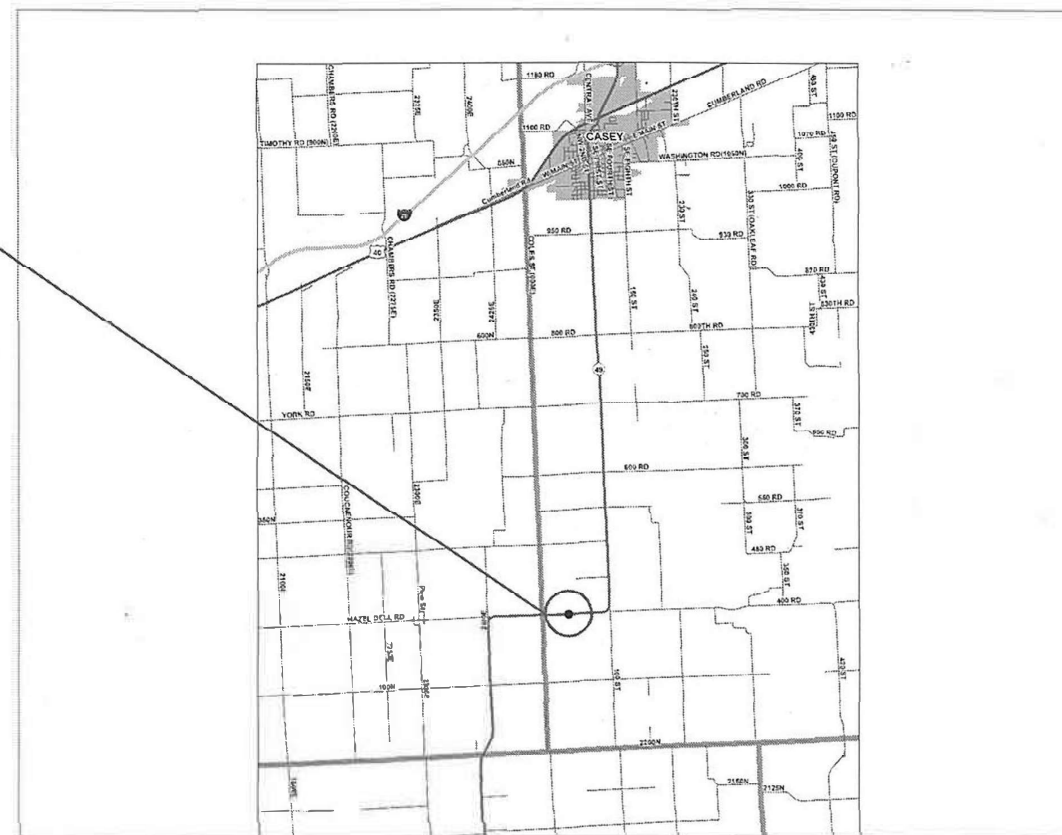
# PROPOSED HIGHWAY PLANS

FAP ROUTE 832 (IL 49)  
SECTION D7 BRIDGE REPAIRS 2025-9  
PROJECT STP-RHYY(977)  
BRIDGE DECK OVERLAY  
CLARK COUNTY

C-97-135-23



S.N. 012-0064  
STA. 381+86



FULL SIZE PLANS HAVE BEEN PREPARED USING STANDARD ENGINEERING SCALES. REDUCED SIZED PLANS WILL NOT CONFORM TO STANDARD SCALES. IN MAKING MEASUREMENTS ON REDUCED PLANS, THE ABOVE SCALES MAY BE USED.

J.U.L.I.E.  
JOINT UTILITY LOCATION INFORMATION FOR EXCAVATION  
1-800-892-0123  
OR 811

PROJECT ENGINEER: BRIAN LEWIS  
PROJECT MANAGER: KALEB HIRTZEL

CONTRACT NO. 74C58

GROSS LENGTH = 183.0 FT. = 0.035 MILE  
NET LENGTH = 183.0 FT. = 0.035 MILE

STATE OF ILLINOIS  
DEPARTMENT OF TRANSPORTATION

SUBMITTED JUNE 27 2024  
*Jeffrey P. Hynsley*  
REGIONAL ENGINEER

August 16, 2024  
*Scott A. Etk*  
ENGINEER OF DESIGN AND ENVIRONMENT

August 16, 2024  
*James J. Quinn*  
DIRECTOR OF HIGHWAYS PROJECT IMPLEMENTATION 13

PRINTED BY THE AUTHORITY  
OF THE STATE OF ILLINOIS

## INDEX OF SHEETS

SHEET NO.	ITEM
1	COVER SHEET
2	INDEX OF SHEETS, GENERAL NOTES & HIGHWAY STANDARDS
3	SUMMARY OF QUANTITIES
4	TYPICAL SECTIONS
5	SCHEDULE OF QUANTITIES
6	PLAN SHEET & PAVING DETAILS
7 - 8	STAGE CONSTRUCTION DETAILS
9 - 12	BRIDGE REPAIR PLANS
13 - 16	PAVEMENT MARKING DETAILS

THE FOLLOWING STANDARDS ARE PART OF THESE PLANS AND ARE INCLUDED FLOWING THE LAST NUMBERED SHEET IN THE PLANS.

## HIGHWAY STANDARDS

STD NO.	DESCRIPTION
000001-08	STANDARD SYMBOLS, ABBREVIATIONS & PATTERNS
001006	DECIMAL OF AN INCH AND OF A FOOT
701001-02	OFF-RD OPERATIONS, 2L, 2W, MORE THAN 15' AWAY
701006-05	OFF-RD OPERATIONS, 2L, 2W, 15' TO 24" FROM PAVEMENT EDGE
701201-05	LANE CLOSURE, 2L, 2W, DAY ONLY, FOR SPEEDS >= 45 MPH
701301-04	LANE CLOSURE, 2L, 2W, SHORT TIME OPERATIONS
701311-03	LANE CLOSURE, 2L, 2W, MOVING OPERATIONS - DAY ONLY
701321-18	LANE CLOSURE, 2L, 2W, BRIDGE REPAIR WITH BARRIER
701901-09	TRAFFIC CONTROL DEVICES
704001-08	TEMPORARY CONCRETE BARRIER
780001-05	TYPICAL PAVEMENT MARKINGS
782006-01	GUARDRAIL AND BARRIER WALL REFLECTOR MOUNTING DETAILS

## GENERAL NOTES

THE FOLLOWING RATES OF APPLICATION HAVE BEEN USED WHEN CALCULATING PLAN QUANTITIES:

AGGREGATE WEDGE SHOULDER, TYPE B	2.05 TONS/ CU YD
HOT-MIX ASPHALT SURFACE COURSE	112 LB/SQ YD/IN

THE FOLLOWING MIXTURE REQUIREMENTS ARE APPLICABLE TO THIS PROJECT:

APPLICATION	AC/PG	DESIGN AIR VOIDS	MIXTURE COMPOSITION	FRICTION AGGREGATE	QUALITY MANAGEMENT
POLYMERIZED HMA SURFACE COURSE, MIX "D", N90 (1 3/4")	SBS PG 70-22	4.0% @ N=90	IL - 9.5	MIXTURE D	QC/QA

REV - MS

MODEL: GenNotes (Sheet)  
FILE NAME: c:\pw\_work\pwwork\hrtzel\0810696\074C58-sheets-index\GenNotesStandards.dgn

USER NAME = Kaleb.hirtzel	DESIGNED -	REVISED -
	DRAWN -	REVISED -
	CHECKED -	REVISED -
PLOT DATE = 5/20/2024	DATE -	REVISED -

**STATE OF ILLINOIS  
DEPARTMENT OF TRANSPORTATION**

**INDEX OF SHEETS, GENERAL NOTES  
& HIGHWAY STANDARDS**

SCALE: SHEET 1 OF 1 SHEETS STA. TO STA.

F.A.P. RTE.	SECTION	COUNTY	TOTAL SHEETS	SHEET NO.
832	D7 BRIDGE REPAIRS 2025-9	CLARK	16	2
CONTRACT NO. 74C58				
ILLINOIS FED. AID PROJECT				

SUMMARY OF QUANTITIES				80% FED 20% STATE	CONSTR. CODE
Code No.	Item	Unit	Total Quantity		0059 S.N. 012-0064
40600290	BITUMINOUS MATERIALS (TACK COAT)	POUND	104		104
40600982	HOT-MIX ASPHALT SURFACE REMOVAL - BUTT JOINT	SQ YD	125		125
40600990	TEMPORARY RAMP	SQ YD	21		21
40604164	POLYMERIZED HOT-MIX ASPHALT SURFACE COURSE, IL-9.5, MIX "D", N90	TON	23		23
48102100	AGGREGATE WEDGE SHOULDER, TYPE B	TON	7		7
50300300	PROTECTIVE COAT	SQ YD	188		188
67100100	MOBILIZATION	L SUM	1		1
70100450	TRAFFIC CONTROL AND PROTECTION, STANDARD 701201	L SUM	1		1
70106500	TEMPORARY BRIDGE TRAFFIC SIGNALS	EACH	1		1
70107005	PAVEMENT MARKING BLACKOUT TAPE, 5"	FOOT	1947		1947
70107025	CHANGEABLE MESSAGE SIGN	CAL DA	28		28
70300150	SHORT TERM PAVEMENT MARKING REMOVAL	SQ FT	811		811
70400100	TEMPORARY CONCRETE BARRIER	FOOT	362.5		362.5

SUMMARY OF QUANTITIES				80% FED 20% STATE	CONSTR. CODE
Code No.	Item	Unit	Total Quantity		0059 S.N. 012-0064
70400200	RELOCATE TEMPORARY CONCRETE BARRIER	FOOT	337.5		337.5
70600250	IMPACT ATTENUATORS, TEMPORARY (NON- REDIRECTIVE), TEST LEVEL 3	EACH	4		4
70600350	IMPACT ATTENUATORS, RELOCATE (NON- REDIRECTIVE), TEST LEVEL 3	EACH	4		4
* 78001110	PAINT PAVEMENT MARKING - LINE 4"	FOOT	2312		2312
78300200	RAISED REFLECTIVE PAVEMENT MARKER REMOVAL	EACH	4		4
Z0012111	BRIDGE DECK FLY ASH OR GGBF SLAG CONCRETE OVERLAY, 2 1/2"	SQ YD	188		188
Z0012130	BRIDGE DECK SCARIFICATION 3/4"	SQ YD	188		188
Z0016001	DECK SLAB REPAIR (FULL DEPTH, TYPE I)	SQ YD	5		5
Z0016002	DECK SLAB REPAIR (FULL DEPTH, TYPE II)	SQ YD	3		3
Z0029090	DIAMOND GRINDING (BRIDGE SECTION)	SQ YD	164		164
X5030250	BRIDGE DECK GROOVING (LONGITUDINAL)	SQ YD	141		141
X6026200	INLETS TO BE ADJUSTED (SPECIAL)	EACH	2		2
X7010202	TRAFFIC CONTROL AND PROTECTION, STANDARD 701321 (SPECIAL)	EACH	1		1

\* SPECIALTY ITEM

MODEL: SOQ (Sheet)  
FILE NAME: c:\p\work\pwr\hrtz\hrtz\0910695\074C58-sheets-SOQ.dgn

USER NAME = kaleb.hirtzel	DESIGNED -	REVISED -
	DRAWN -	REVISED -
	CHECKED -	REVISED -
PLOT DATE = 5/20/2024	DATE -	REVISED -

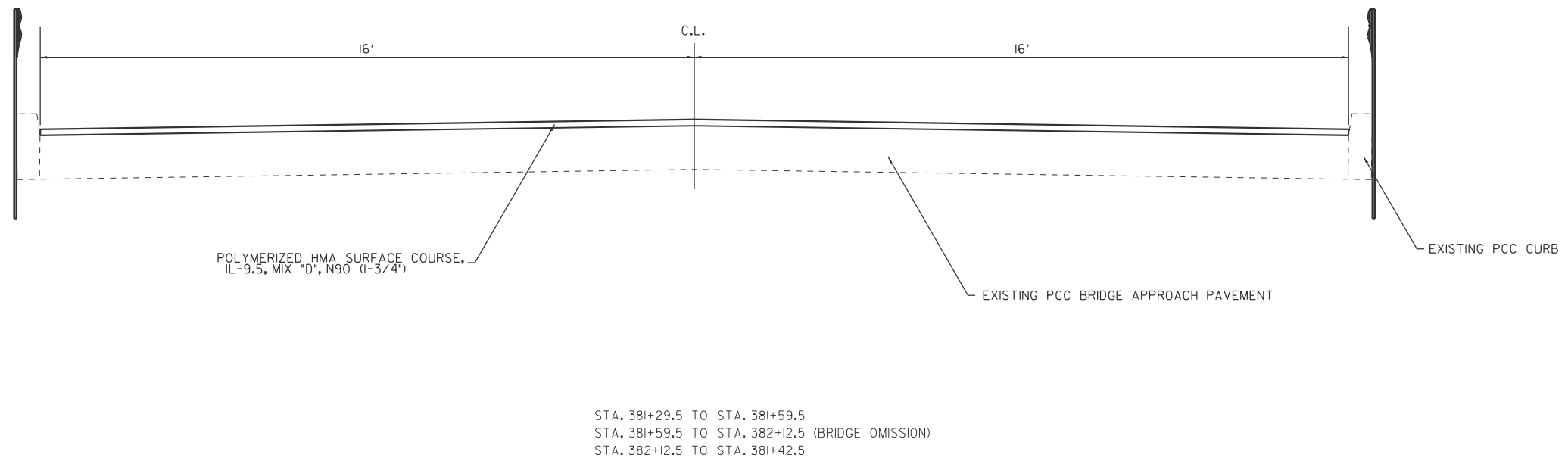
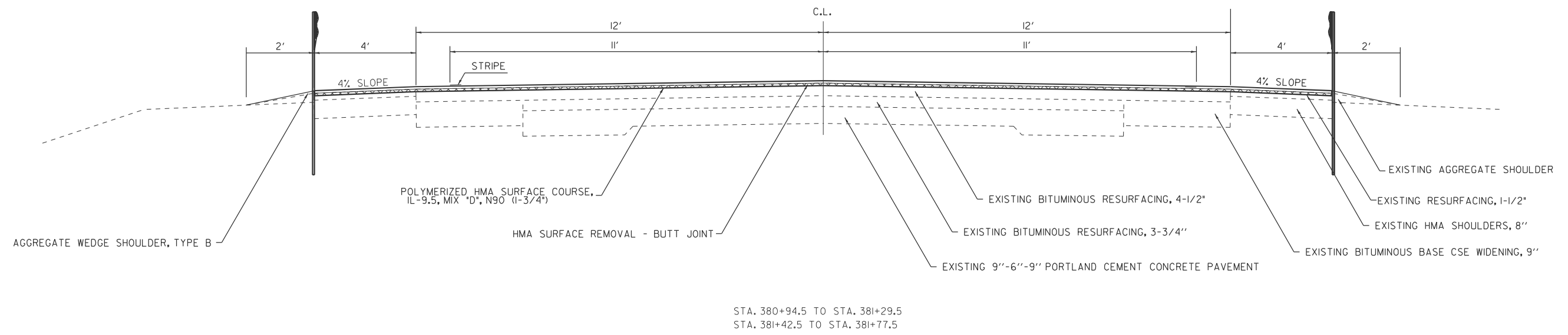
STATE OF ILLINOIS  
DEPARTMENT OF TRANSPORTATION

SUMMARY OF QUANTITIES

SCALE: SHEET 1 OF 1 SHEETS STA. TO STA.

F.A.P RTE.	SECTION	COUNTY	TOTAL SHEETS	SHEET NO.
832	D7 BRIDGE REPAIRS 2025-9	CLARK	16	3
CONTRACT NO. 74C58				
ILLINOIS FED. AID PROJECT				

**TYPICAL CROSS SECTION  
F.A.P. 832 (IL. 49)**



**STATE OF ILLINOIS  
DEPARTMENT OF TRANSPORTATION**

**TYPICAL SECTIONS**

F.A.P. RTE.	SECTION	COUNTY	TOTAL SHEETS	SHEET NO.
832	D7 BRIDGE REPAIRS 2025-9	CLARK	16	4
CONTRACT NO. 74C58				
		ILLINOIS	FED. AID PROJECT	

SCALE: SHEET 1 OF 1 SHEETS STA. TO STA.

USER NAME = kaleb.hirtzel	DESIGNED -	REVISED -
	DRAWN -	REVISED -
	CHECKED -	REVISED -
PLOT DATE = 6/4/2024	DATE -	REVISED -

MODEL: Typical Sections (Sheet)  
 FILE NAME: c:\p\work\kaleb\hirtzel\0695\D74C58-sheets-TypicalSections.dgn

PAVING			HMA SURFACE REMOVAL - BUTT JOINT	TEMPORARY RAMP	BITUMINOUS MATERIALS (TACK COAT)	POLYMERIZED HMA SURFACE COURSE, IL-9.5, MIX "D", N90	AGGREGATE WEDGE SHOULDERS, TYPE B	RAISED REFLECTIVE PAVEMENT MARKER REMOVAL
STATIONING		LENGTH						
FROM	TO	FEET	SQ YD	SQ YD	POUND	TON	TON	EACH
380+94.5	381+29.5	35.0	62.2	-	28.0	6.1	3.5	1
381+29.5	381+59.5	30.0	-	10.7	24.0	5.2	-	-
381+59.5	382+12.5	53.0	BRIDGE	-	-	-	-	2
382+12.5	382+42.5	30.0	-	10.7	24.0	5.2	-	-
382+42.5	382+77.5	35.0	62.2	-	28.0	6.1	3.5	1
TOTALS:			124.4	21.3	104.0	22.6	7.1	4

PAINT PAVEMENT MARKING - LINE 4"			WHITE EDGELINE MARKINGS	YELLOW CENTERLINE MARKINGS
STATIONING		LENGTH		
FROM	TO	FEET	FOOT	FOOT
378+45	382+57	412	824	515
382+57	384+15	158	316	316
384+15	385+20	105	210	131
TOTALS:			1350	962

STAGING PAVEMENT MARKING			PAVEMENT MARKING BLACKOUT TAPE, 5"	SHORT-TERM PAVEMENT MARKING REMOVAL
STATIONING		LENGTH		
FROM	TO	FEET	FOOT	SQ FT
STAGE 1				
378+45	380+81	236	295	123
382+79	384+15	136	272	113
384+15	385+20	105	131	55
380+43	383+29	286	286	119
STAGE 1 TOTALS:			984	410
STAGE 2				
378+64	380+89	225	281	117
382+79	384+15	136	272	113
384+15	385+14	99	124	52
380+43	383+29	286	286	119
STAGE 2 TOTALS:			963	401
PROJECT TOTALS:			1947	811

STAGING TRAFFIC CONTROL		TEMPORARY CONCRETE BARRIER	RELOCATE TEMPORARY CONCRETE BARRIER	IMPACT ATTENUATOR, TEMPORARY (NON-REDIRECTIVE), TEST LEVEL 3	IMPACT ATTENUATOR, RELOCATE (NON-REDIRECTIVE), TEST LEVEL 3
FROM	TO				
FROM	TO	FOOT	FOOT	EACH	EACH
STAGE 1					
380+30.1	381+29.7	100.0	-	1	-
381+29.7	382+42.2	112.5	-	-	-
382+42.2	382+79.6	37.5	-	1	-
383+41.9	384+54.1	112.5	-	2	-
STAGE 1 TOTALS:		362.5	0.0	4	0
STAGE 2					
379+30.3	379+67.7	-	37.5	-	2
380+30.0	381+29.7	-	100	-	1
381+29.7	382+42.2	-	112.5	-	-
382+42.2	383+29.4	-	87.5	-	1
STAGE 2 TOTALS:		0.0	337.5	0	4
PROJECT TOTALS:		362.5	337.5	4	4

MODEL: Schedules (Sheet)  
FILE NAME: c:\pwworkspace\hrtzeta\hrtzeta\106895\074058-sheets-Schedules.dgn

USER NAME = kaleb.hirtzel	DESIGNED -	REVISED -
	DRAWN -	REVISED -
	CHECKED -	REVISED -
PLOT DATE = 6/14/2024	DATE -	REVISED -

**STATE OF ILLINOIS  
DEPARTMENT OF TRANSPORTATION**

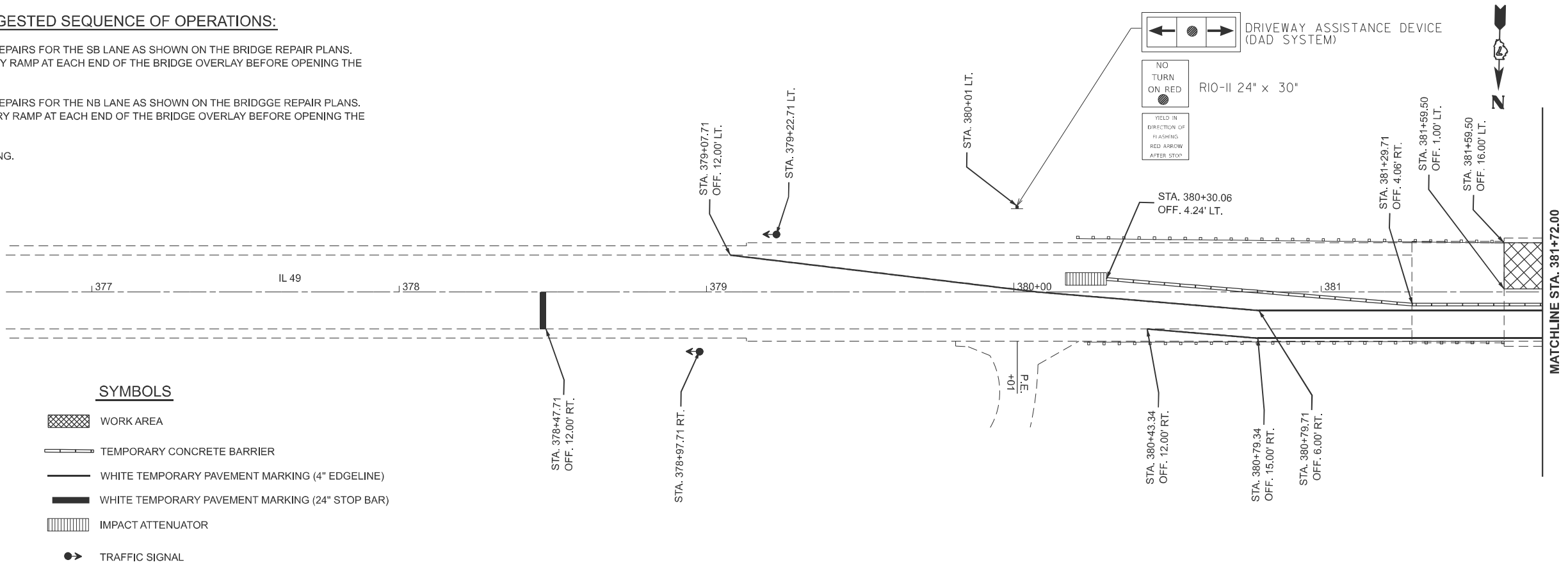
SCHEDULE OF QUANTITIES			
SCALE:	SHEET 1	OF 1	SHEETS
	STA.		TO STA.

F.A.P. RTE.	SECTION	COUNTY	TOTAL SHEETS	SHEET NO.
832	D7 BRIDGE REPAIRS 2025-9	CLARK	16	5
CONTRACT NO. 74C58			ILLINOIS FED. AID PROJECT	



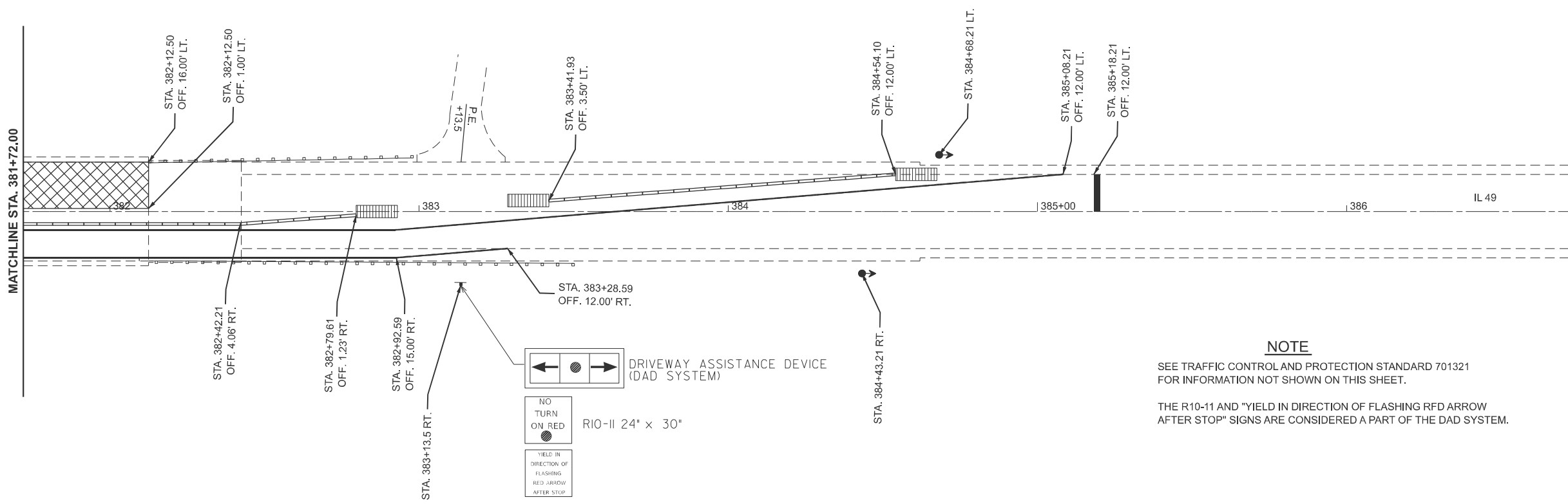
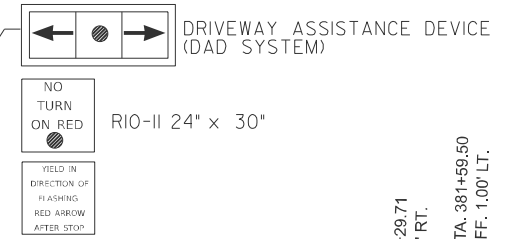
**SUGGESTED SEQUENCE OF OPERATIONS:**

1. COMPLETE THE BRIDGE REPAIRS FOR THE SB LANE AS SHOWN ON THE BRIDGE REPAIR PLANS. CONSTRUCT A TEMPORARY RAMP AT EACH END OF THE BRIDGE OVERLAY BEFORE OPENING THE LANE TO TRAFFIC.
2. COMPLETE THE BRIDGE REPAIRS FOR THE NB LANE AS SHOWN ON THE BRIDGE REPAIR PLANS. CONSTRUCT A TEMPORARY RAMP AT EACH END OF THE BRIDGE OVERLAY BEFORE OPENING THE LANE TO TRAFFIC.
3. COMPLETE THE HMA PAVING.



**SYMBOLS**

- WORK AREA
- TEMPORARY CONCRETE BARRIER
- WHITE TEMPORARY PAVEMENT MARKING (4" EDGELINE)
- WHITE TEMPORARY PAVEMENT MARKING (24" STOP BAR)
- IMPACT ATTENUATOR
- TRAFFIC SIGNAL



**NOTE**

SEE TRAFFIC CONTROL AND PROTECTION STANDARD 701321 FOR INFORMATION NOT SHOWN ON THIS SHEET.

THE R10-11 AND "YIELD IN DIRECTION OF FLASHING RED ARROW AFTER STOP" SIGNS ARE CONSIDERED A PART OF THE DAD SYSTEM.

MODEL: EXCL - Stage 1 Const (Sheet)  
FILE NAME: c:\p\work\pvt\hrtz\hrtz\0910695\0774C58-sheets-Stage1.dgn

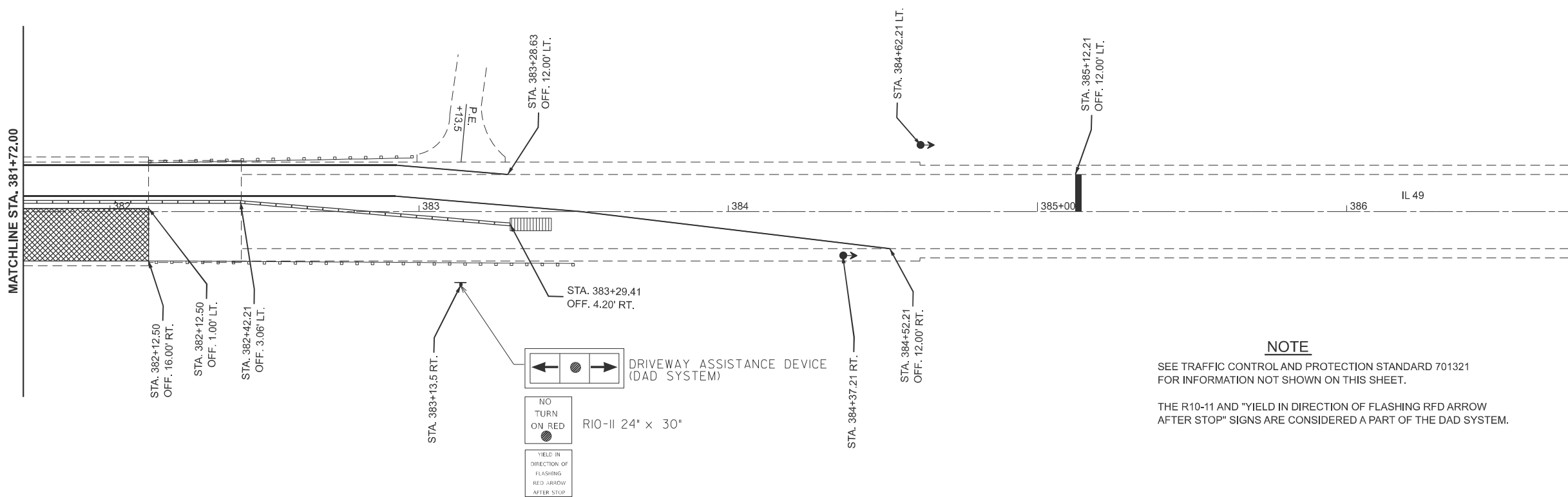
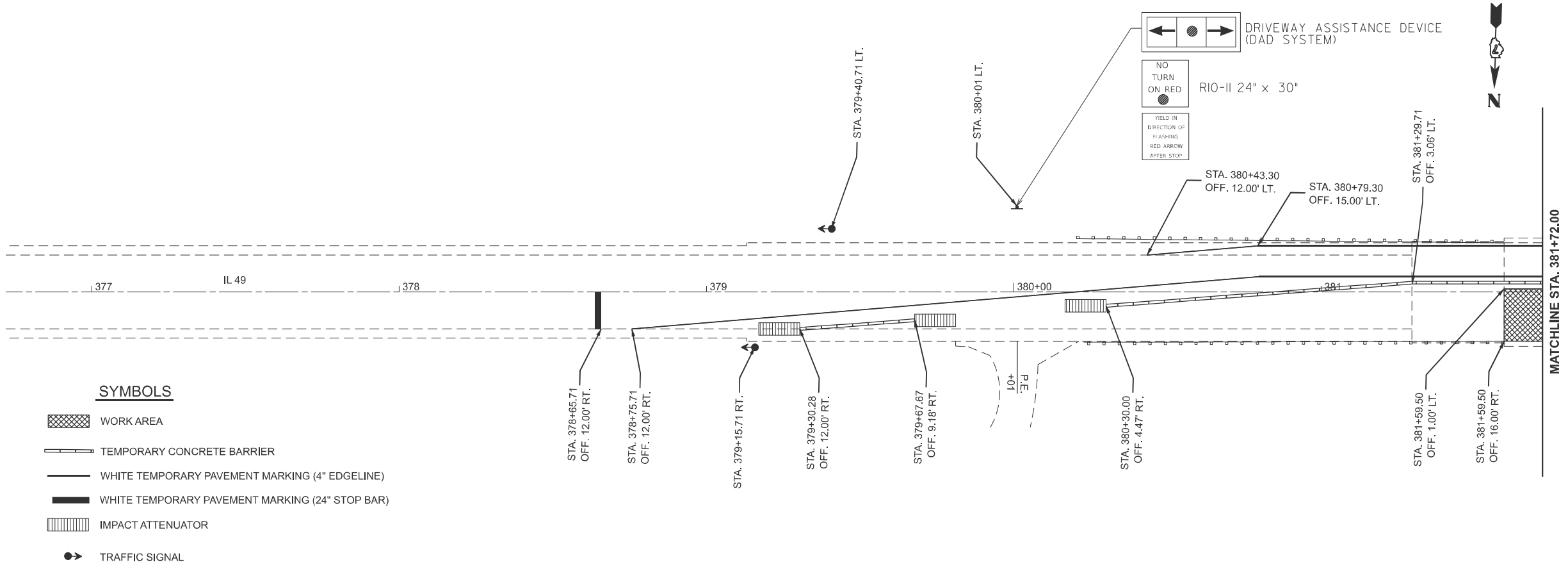
USER NAME = kaleb.hirtzel	DESIGNED -	REVISED -
	DRAWN -	REVISED -
	CHECKED -	REVISED -
PLOT DATE = 6/13/2024	DATE -	REVISED -

**STATE OF ILLINOIS  
DEPARTMENT OF TRANSPORTATION**

**STAGE 1 CONSTRUCTION DETAILS**

SCALE: 1"=20' SHEET 1 OF 1 SHEETS STA. 375+72.00 TO STA. 387+72.00

F.A.P. RTE.	SECTION	COUNTY	TOTAL SHEETS	SHEET NO.
832	D7 BRIDGE REPAIRS 2025-9	CLARK	16	7
CONTRACT NO. 74C58				
ILLINOIS FED. AID PROJECT				



**NOTE**

SEE TRAFFIC CONTROL AND PROTECTION STANDARD 701321 FOR INFORMATION NOT SHOWN ON THIS SHEET.

THE R10-11 AND "YIELD IN DIRECTION OF FLASHING RFD ARROW AFTER STOP" SIGNS ARE CONSIDERED A PART OF THE DAD SYSTEM.

MODEL: EXCL-1 - Stage 2 Const [Sheet]  
 FILE NAME: c:\p\work\pwr\hrtz\hrtz\kld0910695\D774C58-sheets-Stage2.dgn

USER NAME = kaleb.hirtzel	DESIGNED -	REVISED -
	DRAWN -	REVISED -
	CHECKED -	REVISED -
PLOT DATE = 6/14/2024	DATE -	REVISED -

**STATE OF ILLINOIS  
 DEPARTMENT OF TRANSPORTATION**

**STAGE 2 CONSTRUCTION DETAILS**

SCALE: 1"=20' SHEET 2 OF 2 SHEETS STA. 375+72.00 TO STA. 387+72.00

F.A.P. RTE.	SECTION	COUNTY	TOTAL SHEETS	SHEET NO.
832	D7 BRIDGE REPAIRS 2025-9	CLARK	16	8
CONTRACT NO. 74C58				
ILLINOIS FED. AID PROJECT				



STRUCTURE 012-0064 carries ILL 49 over Panther Creek. The steel beam structure was built in 1993. The proposed project consists of bridge deck scarification, full depth deck patching, and bridge deck overlay.



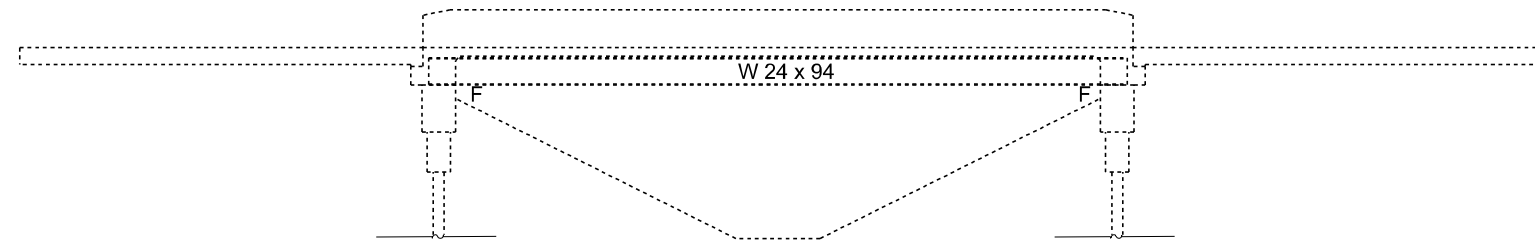
### GENERAL NOTES

Plan dimensions and details relative to the existing structure have been taken from existing plans and are subject to nominal construction variations. The Contractor shall field verify existing dimensions and details affecting new construction and make necessary approved adjustments prior to construction or ordering of materials. Such variations shall not be cause for additional compensation for a change in scope of the work, however, the Contractor will be paid for the quantity actually furnished at the unit price bid for the work.

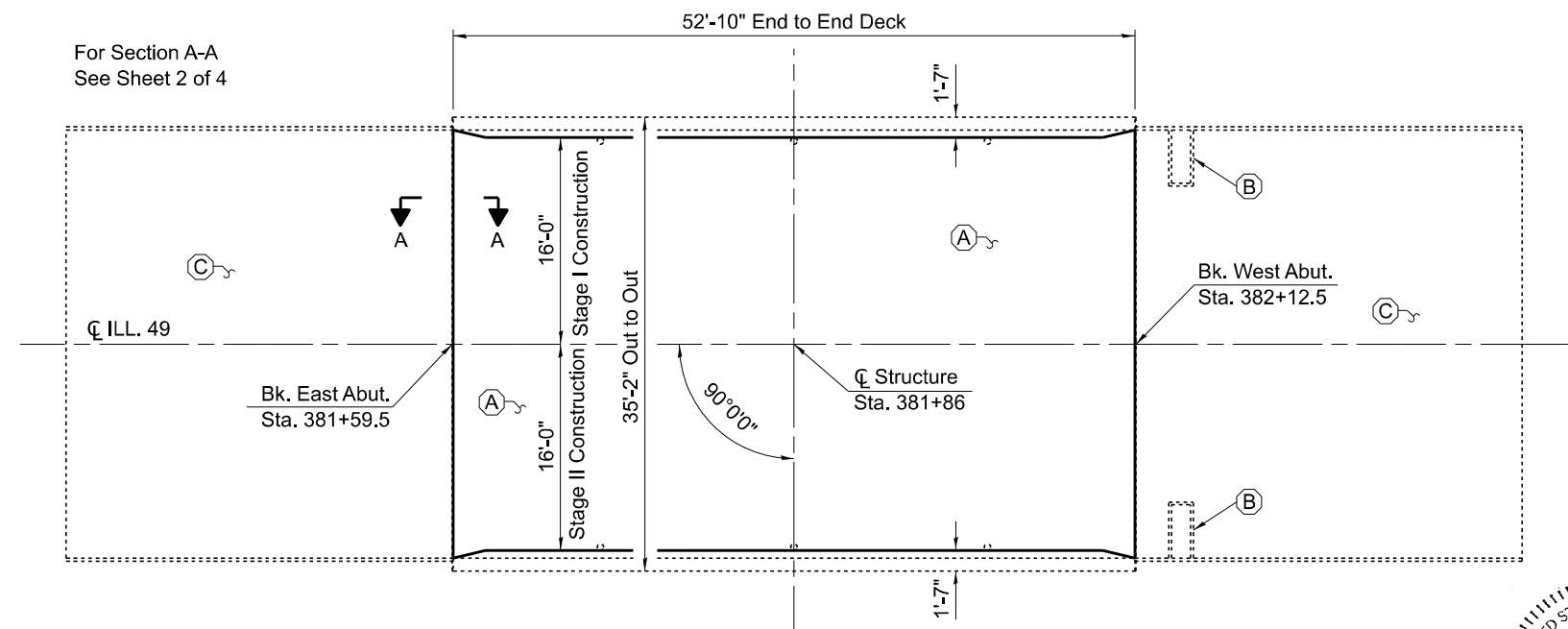
Protective Coat to be applied to areas of new concrete only, including bridge deck concrete overlay.

Areas of deck repairs shown are estimated. The Engineer shall show actual locations of deck repairs on as-built plans.

Full depth deck slab repairs performed in the exterior bays of the bridge deck (between the parapet walls and the first interior beams) shall be limited to individual lengths no greater than 10'. In these portions of the deck, repair areas longer than 10' shall be divided into segments not greater than 10' in length, and the segments shall be poured in alternating sequence. Subsequent segments repaired in sequence shall not be removed until 72 hours shall have elapsed from the end of the previous, adjacent pour, and the adjacent pour shall have attained a minimum modulus of rupture of 650psi.



ELEVATION



PLAN

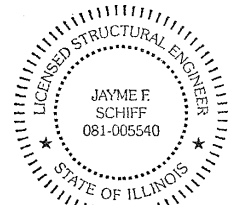
### DESIGN SPECIFICATIONS

2002 AASHTO Standard Specifications for Highway Bridges

### DESIGN STRESSES

$f_y = 60,000$  psi (Reinforcement)  
 $f_y = 36,000$  psi

- (A) - Bridge Deck Scarification  $\frac{3}{4}$ " , Deck Patching, Bridge Deck Fly Ash or GGBF Slag Concrete Overlay  $2\frac{1}{2}$ " , Diamond Grinding (Bridge Section), & Bridge Deck Grooving (Longitudinal)
- (B) - Adjust Approach Pavement Drains
- (C) - Proposed HMA Overlay (See Roadway Plans)



EXPIRES 11-30-2024

*Jayme F. Schiff*

MODEL: D:\in\... FILE NAME: ... PROJECT: ...

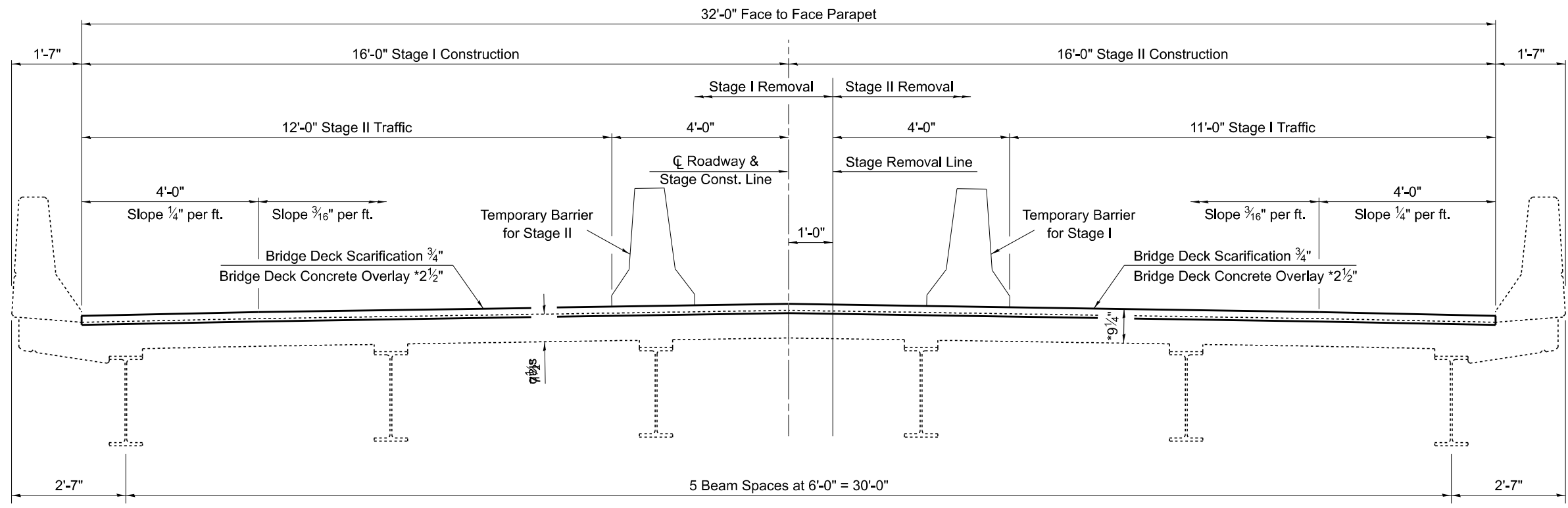
USER NAME =	DESIGNED - D. Lane	REVISED -
	DRAWN - D. Lane	REVISED -
PLOT SCALE = 100,000' / in.	CHECKED - D. Macklin	REVISED -
PLOT DATE = 7/8/2024	DATE - January 2024	REVISED -

STATE OF ILLINOIS  
DEPARTMENT OF TRANSPORTATION

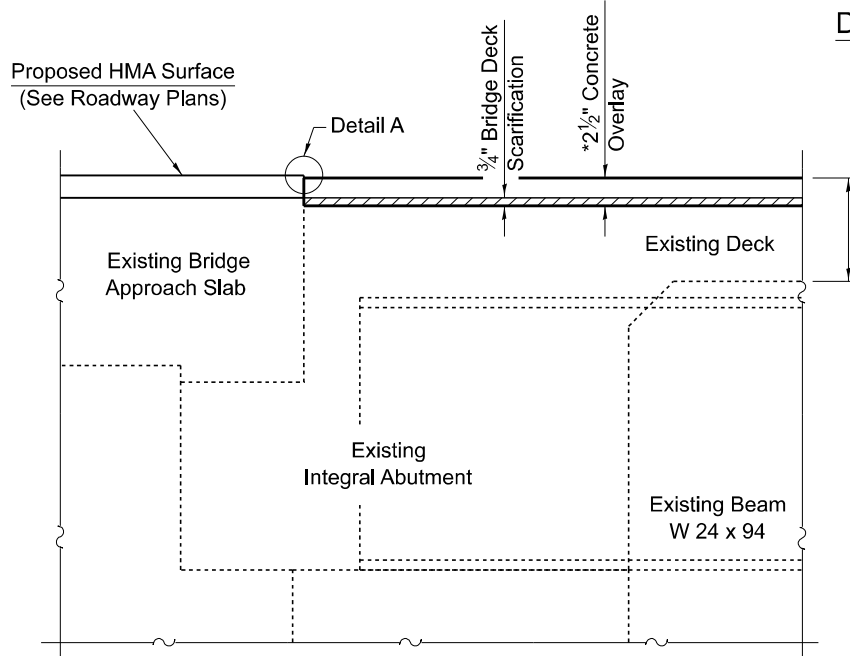
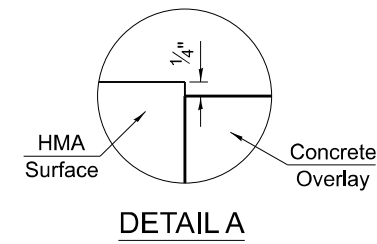
GENERAL PLAN & ELEVATION  
S.N. 012-0064

SCALE: SHEET 1 OF 4 SHEETS STA. TO STA.

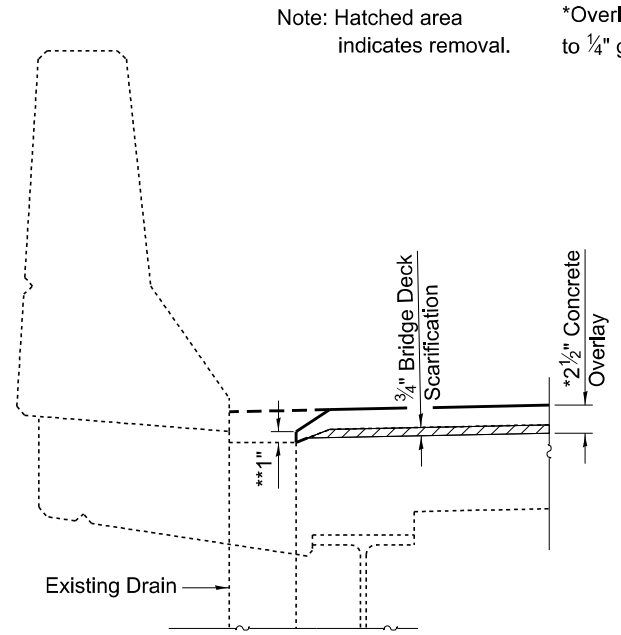
F.A.P. RTE.	SECTION	COUNTY	TOTAL SHEETS	SHEET NO.
832	D7 BRIDGE REPAIRS 2025-9	CLARK	16	9
CONTRACT NO. 74C58				
ILLINOIS		FED. AID PROJECT		



**DECK CROSS SECTION**  
Looking West



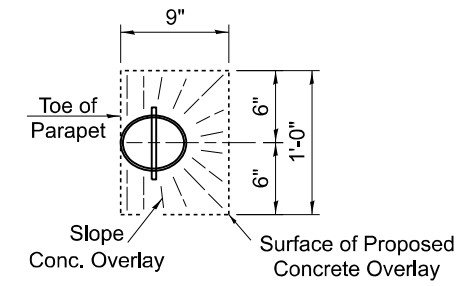
**SECTION A-A**



**FLOOR DRAIN PRESERVATION**

\*\* Minimum thickness of overlay at edge of drain = 1"

Note: Hatched area indicates removal. \*Overlay thickness prior to 1/4" grinding (Typ.)



**TOP PLAN OF FLOOR DRAIN**

**TOTAL BILL OF MATERIALS**

ITEM	UNIT	QUANTITY
Bridge Deck Scarification, 3/4"	Sq. Yd.	188
Bridge Deck Fly Ash or GGBF Slag Concrete Overlay, 2 1/2"	Sq. Yd.	188
Diamond Grinding (Bridge Section)	Sq. Yd.	164
Bridge Deck Grooving (Longitudinal)	Sq. Yd.	141
Protective Coat	Sq. Yd.	188
Deck Slab Repair (Full Depth, Type I)	Sq. Yd.	5.0
Deck Slab Repair (Full Depth, Type II)	Sq. Yd.	3.0
Inlets To Be Adjusted (Special)	Each	2

MODEL: D:\delin\... FILE NAME: ... PROJECT: ...

USER NAME =	DESIGNED - D. Lane	REVISED -
	DRAWN - D. Lane	REVISED -
PLOT SCALE = 100,000' / in.	CHECKED - D. Macklin	REVISED -
PLOT DATE = 7/8/2024	DATE - January 2024	REVISED -

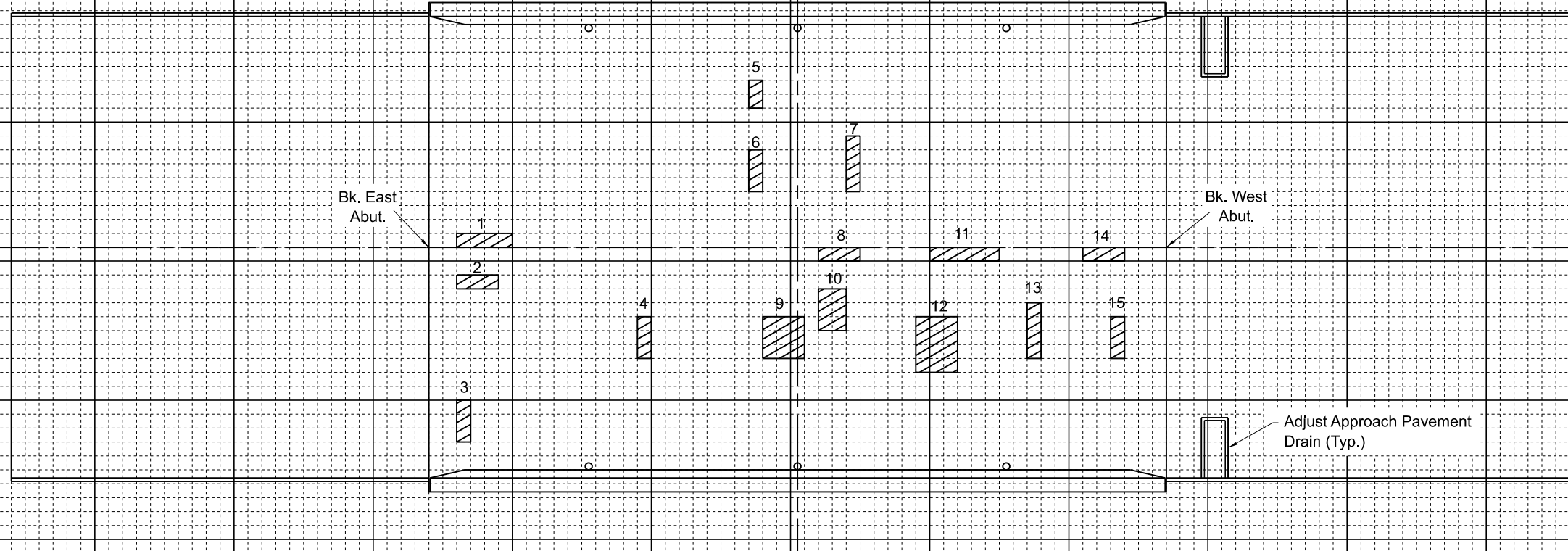
**STATE OF ILLINOIS**  
**DEPARTMENT OF TRANSPORTATION**

**STAGE CONSTRUCTION & BILL OF MATERIALS**  
**S.N. 012-0064**

SCALE: SHEET 2 OF 4 SHEETS STA. TO STA.

F.A.P. RTE.	SECTION	COUNTY	TOTAL SHEETS	SHEET NO.
832	D7 BRIDGE REPAIRS 2025-9	CLARK	16	10
CONTRACT NO. 74C58				
ILLINOIS FED. AID PROJECT				

012-0064 Bridge Deck Patching



PATCH NO.	SIZE		DECK SLAB REPAIR (FD TYPE I)	DECK SLAB REPAIR (FD TYPE II)
	LENGTH	WIDTH	SQ YD	SQ YD
1	4.0	1.0	0.4	
2	3.0	1.0	0.3	
3	1.0	3.0	0.3	
4	1.0	3.0	0.3	
5	1.0	2.0	0.2	
6	1.0	3.0	0.3	
7	1.0	4.0	0.4	
8	3.0	1.0	0.3	
9	3.0	3.0		1.0
10	2.0	3.0		0.7
11	5.0	1.0	0.6	
12	3.0	4.0		1.3
13	1.0	4.0	0.4	
14	3.0	1.0	0.3	
15	1.0	3.0	0.3	
TOTAL ROUNDS TO:			5.0	3.0

THE LOCATIONS AND SIZES SHOWN GRAPHICALLY ABOVE ARE APPROXIMATE. SEE THIS TABLE FOR ACTUAL SIZES.



DATE OF SURVEY: 12-20-23  
 SURVEY BY: DPM & DRL  
 METHOD OF SURVEY: VISUAL

ESTIMATED PAY QUANTITIES:

DECK SLAB REPAIR (FULL DEPTH TYPE I)  
 5.0 SQ YD

DECK SLAB REPAIR (FULL DEPTH TYPE II)  
 3.0 SQ YD

MODEL: D:\rs\... FILE NAME: ...

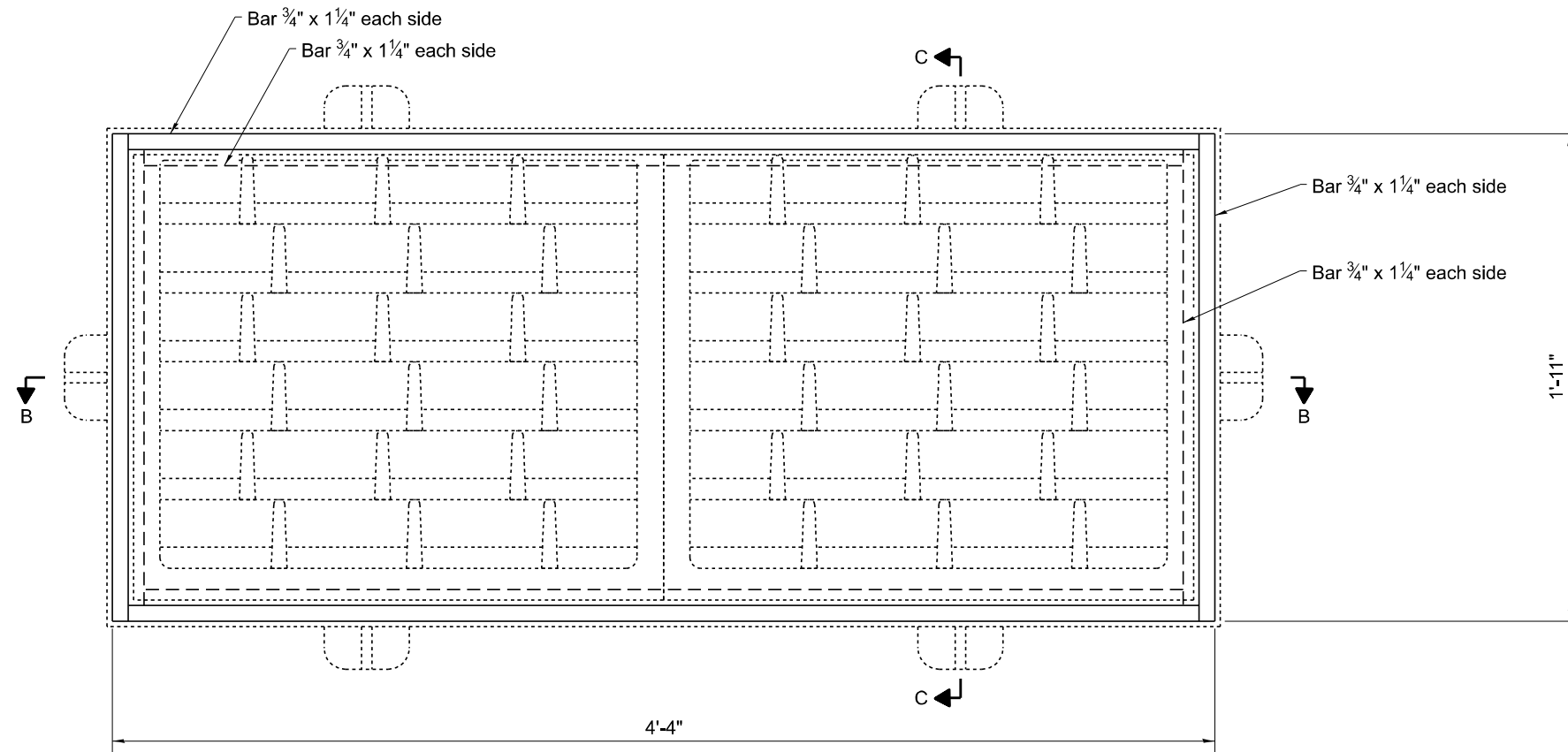
USER NAME =	DESIGNED - D. Lane	REVISED -
	DRAWN - D. Lane	REVISED -
PLOT SCALE = 100,000' / in.	CHECKED - D. Macklin	REVISED -
PLOT DATE = 6/14/2024	DATE - January 2024	REVISED -

STATE OF ILLINOIS  
 DEPARTMENT OF TRANSPORTATION

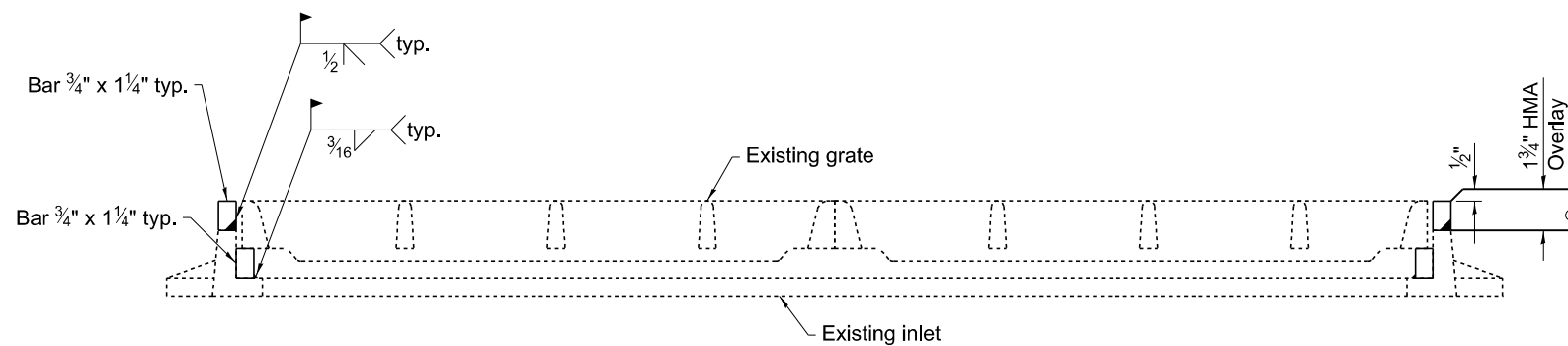
BRIDGE DECK PATCHING  
 S.N. 012-0064

SCALE: SHEET 3 OF 4 SHEETS STA. TO STA.

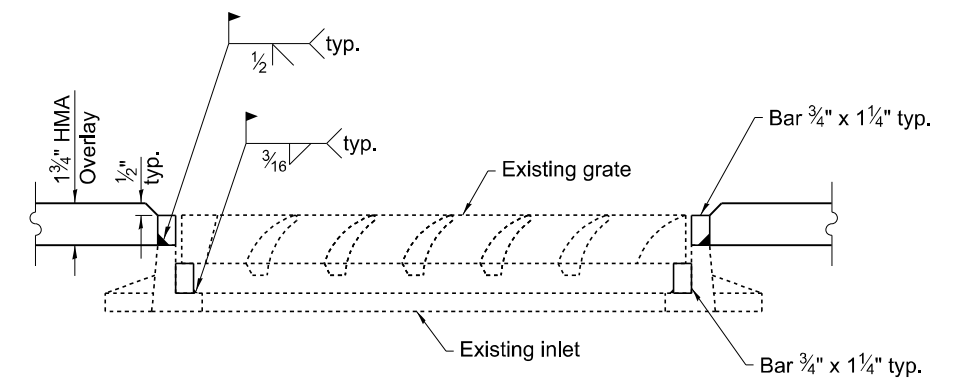
F.A.P. RTE.	SECTION	COUNTY	TOTAL SHEETS	SHEET NO.
832	D7 BRIDGE REPAIRS 2025-9	CLARK	16	11
CONTRACT NO. 74C58				
ILLINOIS		FED. AID PROJECT		



PLAN



SECTION B-B



SECTION C-C

Notes:

- All structural steel shall conform to AASHTO Classification M-270 Gr. 36.
- The adjusting ring shall be galvanized according to AASHTO M111.
- The contractor shall ensure no damage is done to existing grates to be reused.
- Shop plans for proposed adjusting ring shall be submitted for approval prior to fabrication.
- Cost of all labor and materials necessary to remove existing grates, clean existing drains, install adjusting rings, and reinstalling grates is included in the cost per unit each for Inlets To Be Adjusted (Special).

ITEM	UNIT	QUANTITY
Inlets To Be Adjusted (Special)	Each	2

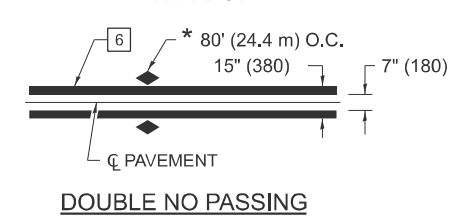
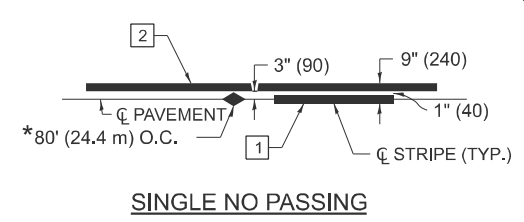
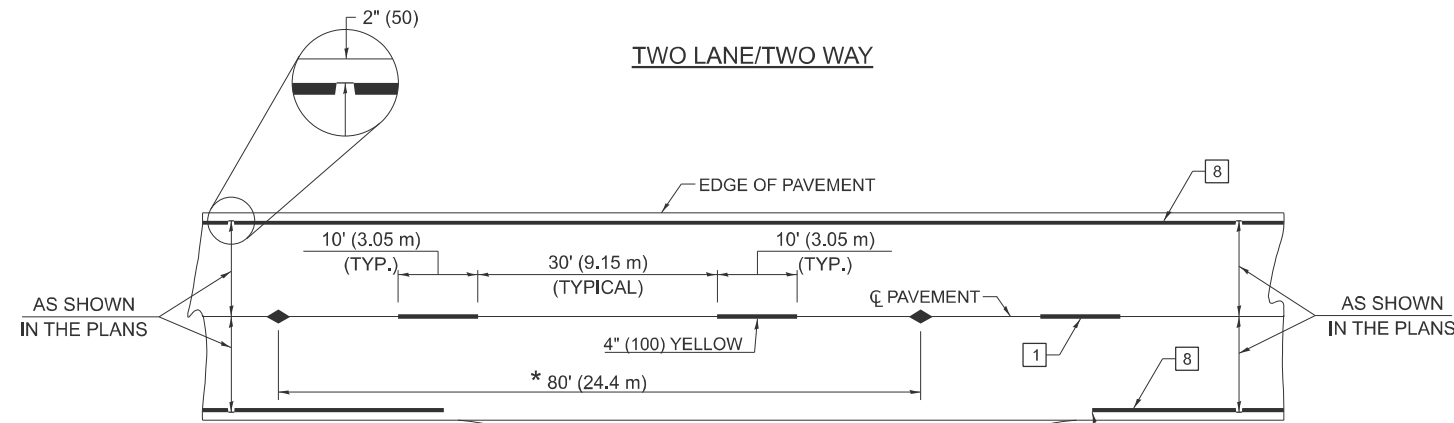
MODEL: D:\inlet.dwg  
 FILE NAME: p:\projects\2024\74C58\CAD\Drawings\Inlet.dwg  
 PROJECT: 74C58  
 DATE: 7/8/2024

USER NAME =	DESIGNED - D. Lane	REVISED -
	DRAWN - D. Lane	REVISED -
PLOT SCALE = 100,000' / in.	CHECKED - D. Macklin	REVISED -
PLOT DATE = 7/8/2024	DATE - January 2024	REVISED -

**STATE OF ILLINOIS**  
**DEPARTMENT OF TRANSPORTATION**

<b>BRIDGE APPROACH SHOULDER INLETS</b>			
<b>S.N. 012-0064</b>			
SCALE:	SHEET 4	OF 4 SHEETS	STA. TO STA.

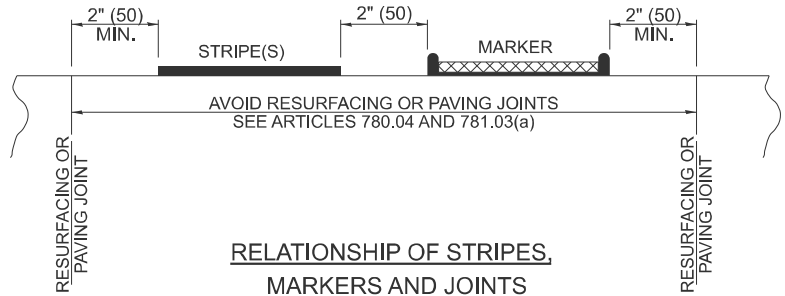
F.A.P. RTE.	SECTION	COUNTY	TOTAL SHEETS	SHEET NO.
832	D7 BRIDGE REPAIRS 2025-9	CLARK	16	12
CONTRACT NO. 74C58				
ILLINOIS FED. AID PROJECT				



\* REDUCE TO 40' (12.2 m) O.C. ON CURVES WITH POSTED OR ADVISORY SPEEDS OF 45 mph (70 km/h) OR LESS.

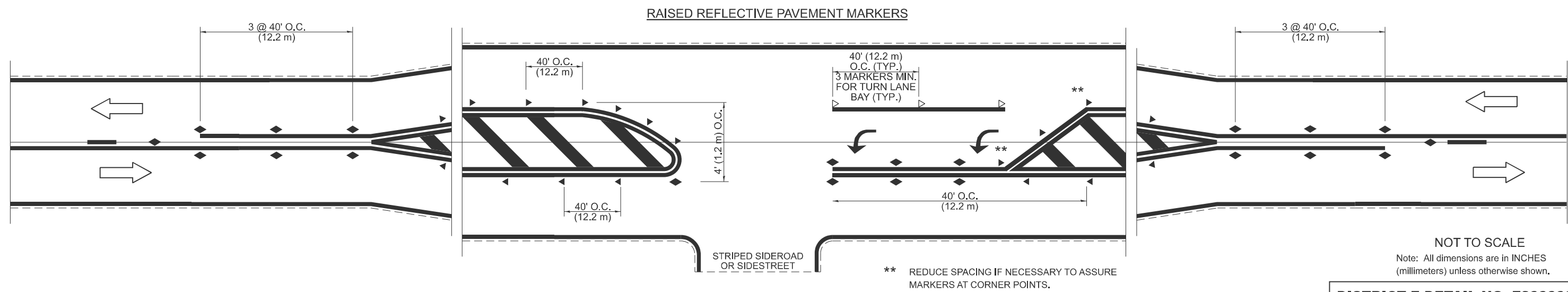
**PAVEMENT MARKING LEGEND**

- |    |                                 |  |
|----|---------------------------------|--|
| 1  | 4" (100) SKIP-DASH (YELLOW)     |  |
| 2  | 4" (100) SOLID (YELLOW)         |  |
| 3  | 12" (300) DIAGONAL (YELLOW)     |  |
| 4  | 4" (100) DOUBLE YELLOW (NARROW) |  |
| 5  | 12" (300) SOLID WHITE           |  |
| 6  | 4" (100) DOUBLE YELLOW (WIDE)   |  |
| 7  | 6" (150) SKIP-DASH (WHITE)      |  |
| 8  | 4" (100) SOLID (WHITE)          |  |
| 9  | 12" (300) DIAGONAL (WHITE)      |  |
| 10 | 6" (150) SOLID (WHITE)          |  |
| 11 | 24" (600) STOP BAR (WHITE)      |  |
| 12 | 8" (200) SOLID (WHITE)          |  |
| 13 | 4" (100) PARKING WHITE          |  |



**TYPICAL PAVEMENT MARKERS LEGEND**

- TWO-WAY AMBER MARKER
- ONE-WAY AMBER MARKER
- ONE-WAY CRYSTAL MARKER



**NOT TO SCALE**  
Note: All dimensions are in INCHES (millimeters) unless otherwise shown.

**DISTRICT 7 DETAIL NO. 78000001**

MODEL: PVT MPRK DET 1 (Sheet)  
FILE NAME: c:\p\work\civil\hrtz\khd0910695\D774C58-sht-Details.dgn

USER NAME = kaleb.hirtzel	DESIGNED -	REVISD - NAS 06/22
	DRAWN -	REVISD -
	CHECKED -	REVISD -
PLOT DATE = 6/27/2024	DATE -	REVISD -

**STATE OF ILLINOIS  
DEPARTMENT OF TRANSPORTATION**

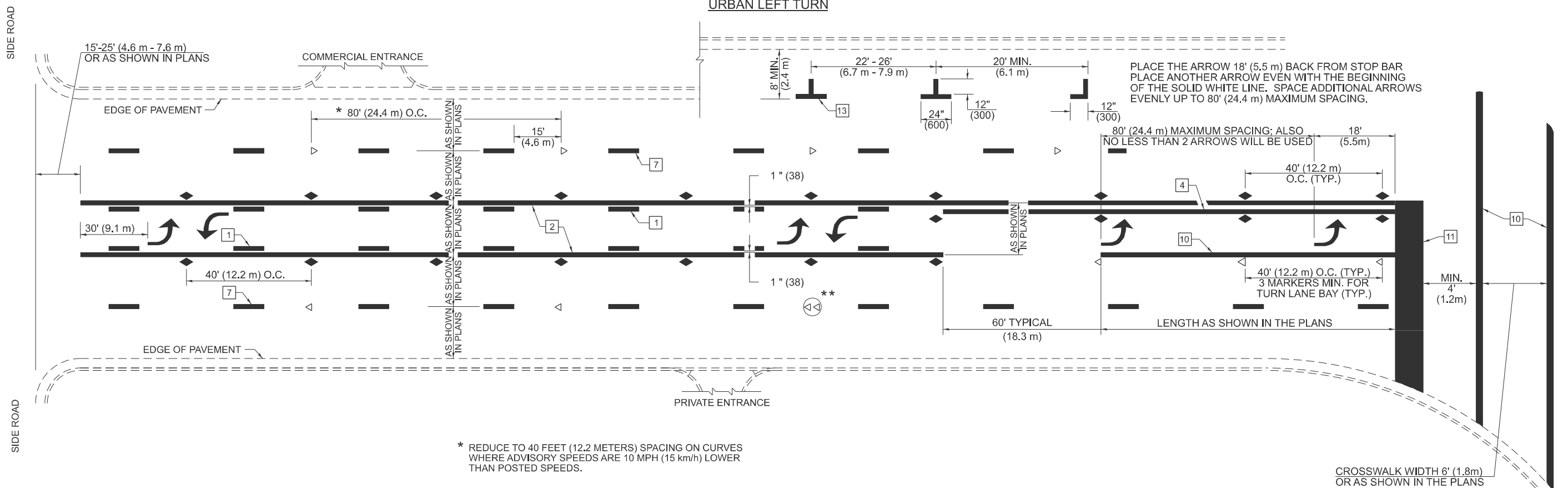
**PAVEMENT MARKING AND RAISED REFLECTIVE PAVEMENT MARKERS  
(RURAL & URBAN APPLICATIONS)**

SCALE: SHEET 1 OF 4 SHEETS STA. TO STA.

F.A.P. RTE.	SECTION	COUNTY	TOTAL SHEETS	SHEET NO.
832	D7 BRIDGE REPAIRS 2025-9	CLARK	16	13
CONTRACT NO. 74C58				
ILLINOIS   FED. AID PROJECT				

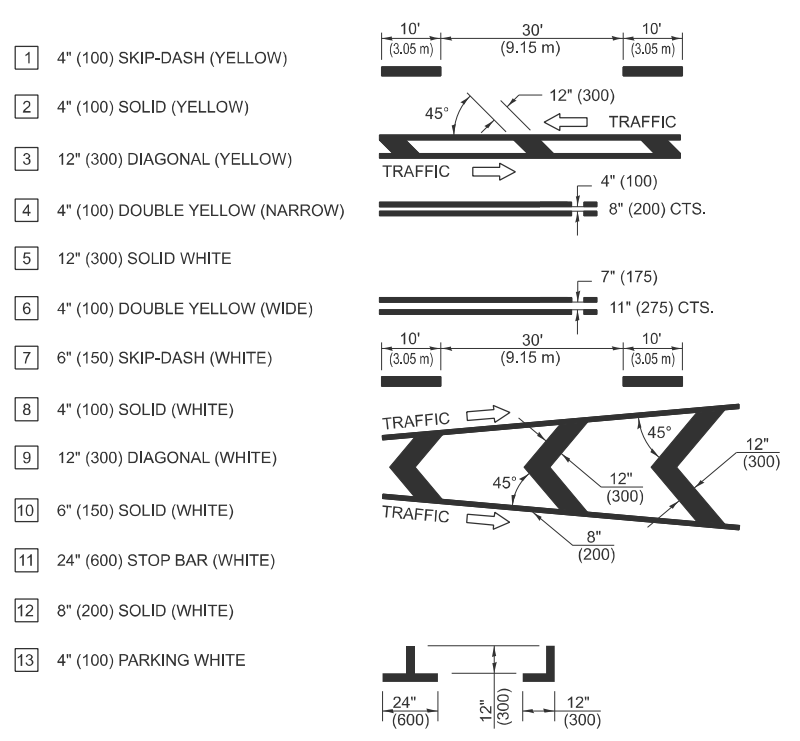
D7 BRIDGE REPAIRS 2025-9

**URBAN LEFT TURN**



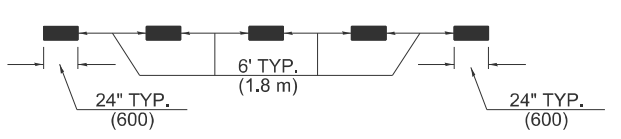
- \* REDUCE TO 40 FEET (12.2 METERS) SPACING ON CURVES WHERE ADVISORY SPEEDS ARE 10 MPH (15 km/h) LOWER THAN POSTED SPEEDS.
- \*\* DOUBLE LANE LINE MARKERS SHALL BE SPECIFIED AND SPACED AS SHOWN IN HIGHWAY STANDARD 781001 FOR MULTI-LANE DIVIDED AND UNDIVIDED HIGHWAYS.

**PAVEMENT MARKING LEGEND**

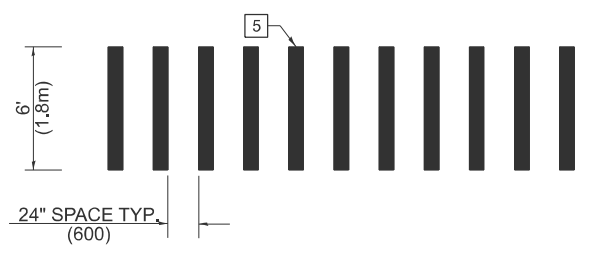


**GENERAL NOTES**

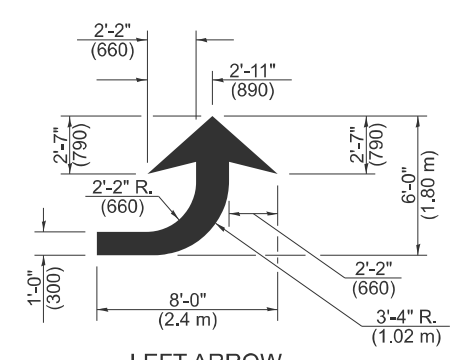
1. TURN ARROW PAIRS SHALL BE PLACED AT 250'(75 m) INTERVALS AND SHALL BE EVENLY SPACED BETWEEN BOTH ENDS OF THE BIDIRECTIONAL LEFT TURN LANE. USE A MINIMUM OF TWO PAIRS PER BLOCK.
2. THE SOLID YELLOW PAVEMENT MARKINGS [2] SHOULD GENERALLY START OR END NEAR THE RADIUS POINT OF EACH STREET RETURN EXCEPT WHERE ONE OR BOTH ENDS WOULD INCLUDE STOP BARS.
3. THE SKIP-DASH PAVEMENT MARKINGS [1] OR [7] SHOULD BE CENTERED BETWEEN BOTH ENDS OF EACH CITY BLOCK AND SHALL BE PLACED SO THEY LINE UP ACROSS FROM EACH OTHER.
4. USE LARGE ARROW SIZE FOR BOTH RURAL AND URBAN LOCATIONS. (SEE SECTION 780 FOR SYMBOLS TABLE)
5. LANE LINE EXTENSIONS SHALL BE THE SAME COLOR AND WIDTH AS THE LANE LINE BEING EXTENDED.
6. ALL WHITE SKIP-DASH LINES SHALL BE 6" IN WIDTH.



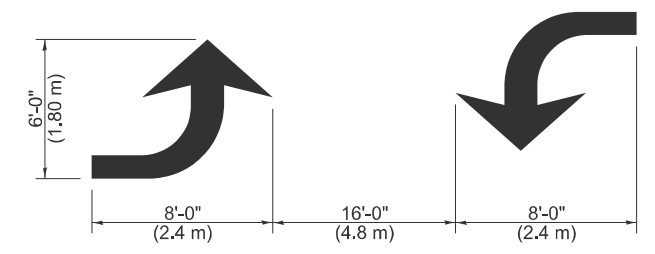
**LANE LINE EXTENSIONS**



**CROSSWALK DETAIL  
(DECATUR CITY LIMITS ONLY)**



**LEFT ARROW**  
REVERSE FOR RIGHT ARROW  
AREA = 15.6 SQ. FT. (1.47 m<sup>2</sup>)  
(WHITE)



**TYPICAL DOUBLE  
TURN ARROWS (WHITE)**

NOT TO SCALE

Note: All dimensions are in INCHES (millimeters) unless otherwise shown.

**DISTRICT 7 DETAIL NO. 78000001**

MODEL: PVT MPK DET 2 (Sheet)  
FILE NAME: c:\p\work\pvt\mkt\hrtz\hrtz\0910695\0774C58-shi-Detals.dgn

USER NAME = kaleb.hirtzel	DESIGNED -	REVISED - NAS 06/22
	DRAWN -	REVISED -
	CHECKED -	REVISED -
PLOT DATE = 6/27/2024	DATE -	REVISED -

**STATE OF ILLINOIS  
DEPARTMENT OF TRANSPORTATION**

**PAVEMENT MARKING AND RAISED REFLECTIVE PAVEMENT MARKERS  
(RURAL & URBAN APPLICATIONS)**

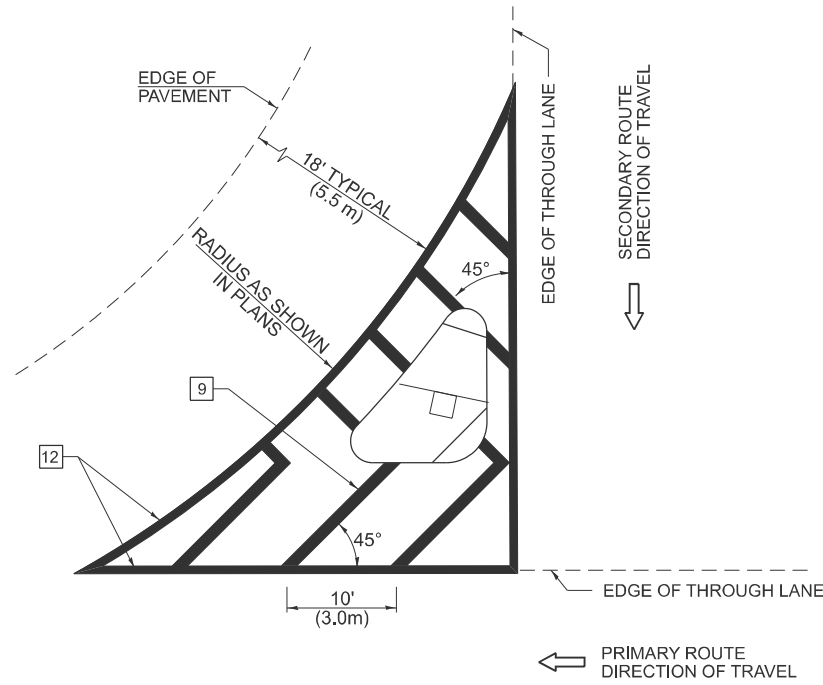
SCALE: SHEET 2 OF 4 SHEETS STA. TO STA.

F.A.P. RTE.	SECTION	COUNTY	TOTAL SHEETS	SHEET NO.
832	D7 BRIDGE REPAIRS 2025-9	CLARK	16	14
CONTRACT NO. 74C58				
ILLINOIS FED. AID PROJECT				

D7 BRIDGE REPAIRS 2025-9

**ISLANDS**

**OPTION 1**



**GENERAL NOTES**

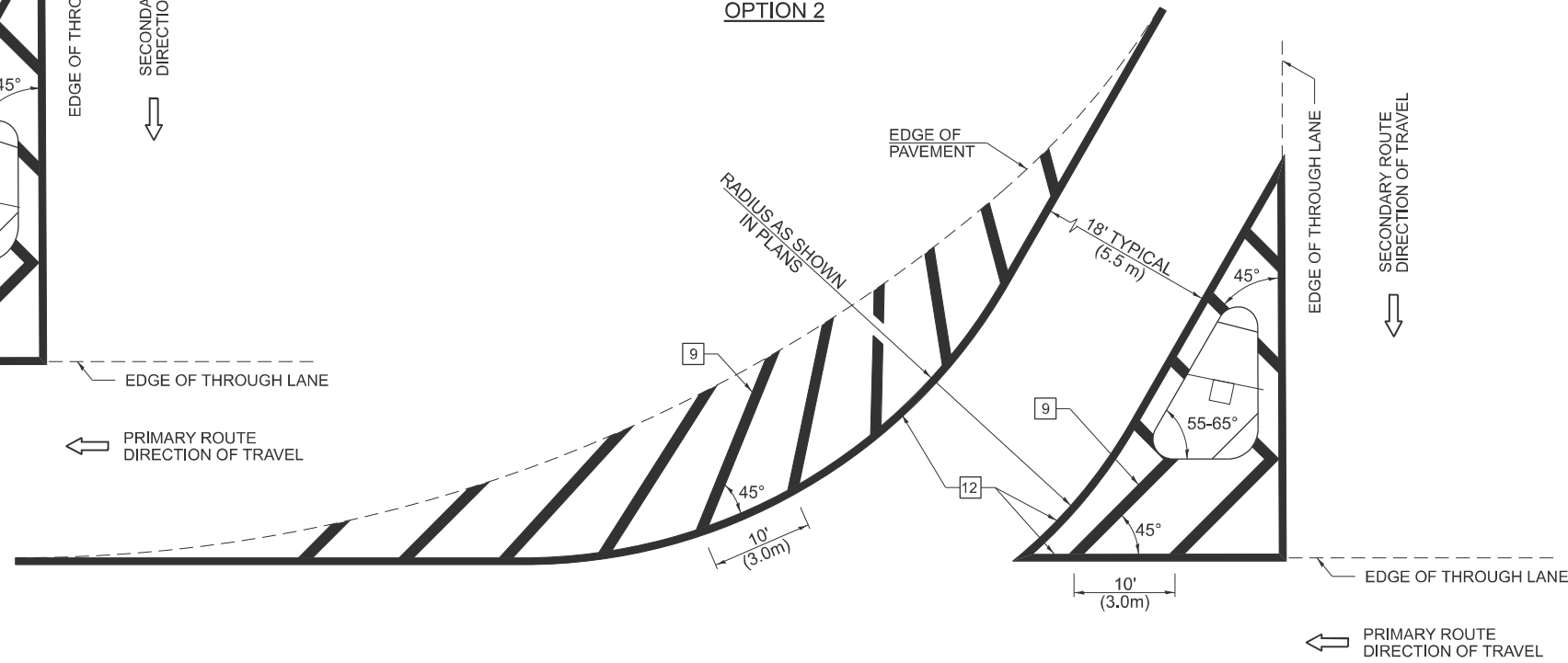
1. RAISED AND CORRUGATED MEDIANS SHALL BE OUTLINED WITH [2].
2. SOME OF THE INFORMATION INCLUDED WITH THIS DETAIL MAY NOT BE APPLICABLE TO THIS IMPROVEMENT.
3. PAVEMENT MARKINGS ARE TO BE EXTENDED THROUGH OMISSIONS WHEN APPLICABLE.
4. FINAL PAVEMENT MARKINGS SHALL BE IN PLACE PRIOR TO PLACING ANY RAISED REFLECTIVE PAVEMENT MARKERS.

5. THE FOLLOWING CRITERIA SHALL BE USED FOR SELECTING THE DIAGONAL PAVEMENT MARKING SPACING:

<30 MPH (<50 km/h)	15' (4.5 m)
30-45 MPH (50-75 km/h)	20' (6.0 m)
>45 MPH (>75 km/h)	30' (9.0 m)

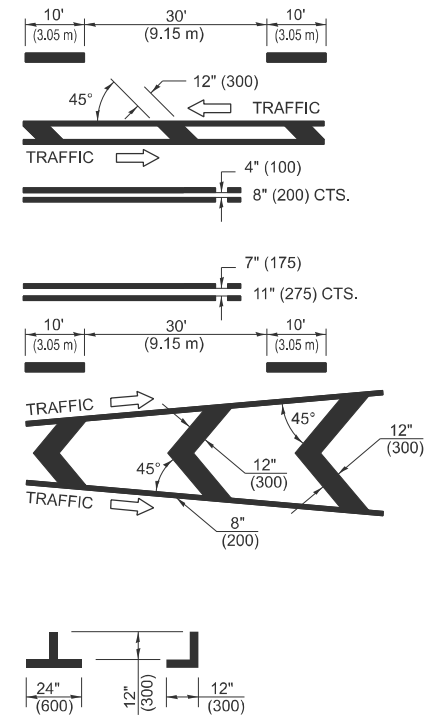
6. THE USE OF ISLAND STRIPING OPTION 1 OR OPTION 2 SHALL BE AS SHOWN ON THE PLANS.

**OPTION 2**

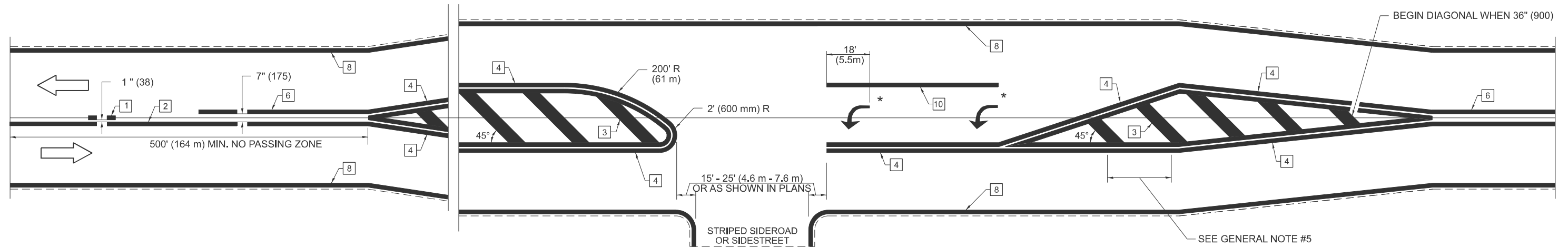


**PAVEMENT MARKING LEGEND**

- [1] 4" (100) SKIP-DASH (YELLOW)
- [2] 4" (100) SOLID (YELLOW)
- [3] 12" (300) DIAGONAL (YELLOW)
- [4] 4" (100) DOUBLE YELLOW (NARROW)
- [5] 12" (300) SOLID WHITE
- [6] 4" (100) DOUBLE YELLOW (WIDE)
- [7] 6" (150) SKIP-DASH (WHITE)
- [8] 4" (100) SOLID (WHITE)
- [9] 12" (300) DIAGONAL (WHITE)
- [10] 6" (150) SOLID (WHITE)
- [11] 24" (600) STOP BAR (WHITE)
- [12] 8" (200) SOLID (WHITE)
- [13] 4" (100) PARKING WHITE



**RURAL LEFT TURN STRIPING**



\* PLACE AN ARROW 18' (5.5 m) BACK FROM END OF THE SOLID WHITE LINE. PLACE ANOTHER ARROW EVEN WITH THE BEGINNING OF THE SOLID WHITE LINE. SPACE ADDITIONAL ARROWS EVENLY UP TO 80' (24.4 m) MAXIMUM SPACING. USE MINIMUM OF 2 ARROWS.

NOT TO SCALE

Note: All dimensions are in INCHES (millimeters) unless otherwise shown.

**DISTRICT 7 DETAIL NO. 78000001**

USER NAME = kaleb.hirtzel	DESIGNED -	REVISED - NAS 06/22
	DRAWN -	
	CHECKED -	
PLOT DATE = 6/27/2024	DATE -	

**STATE OF ILLINOIS  
DEPARTMENT OF TRANSPORTATION**

**PAVEMENT MARKING AND RAISED REFLECTIVE PAVEMENT MARKERS  
(RURAL & URBAN APPLICATIONS)**

SCALE: SHEET 3 OF 4 SHEETS STA. TO STA.

F.A.P. RTE.	SECTION	COUNTY	TOTAL SHEETS	SHEET NO.
832	D7 BRIDGE REPAIRS 2025-9	CLARK	16	15
CONTRACT NO. 74C58				

ILLINOIS FED. AID PROJECT  
D7 BRIDGE REPAIRS 2025-9

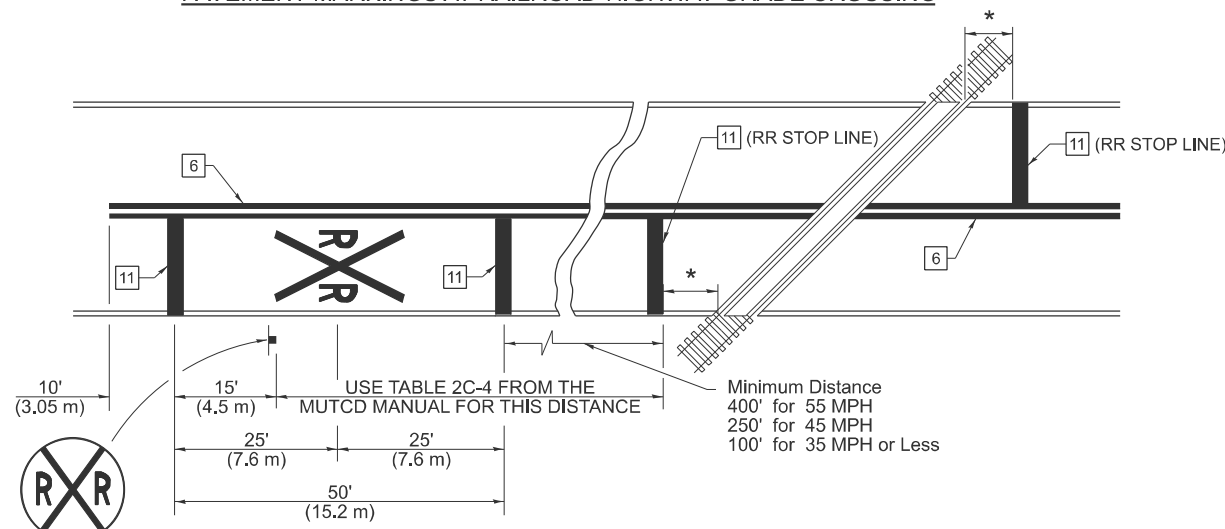
MODEL: PVT MPRK DET 3 (Sheet)  
FILE NAME: c:\p\work\pvt\hrtzel\hrtzel\0695\0774C58-shi-Details.dgn

# SUPPLEMENTAL PAVEMENT MARKING TREATMENT FOR RAILROAD-HIGHWAY GRADE CROSSING

## PAVEMENT MARKING LEGEND

- 1 4" (100) SKIP-DASH (YELLOW)
  - 2 4" (100) SOLID (YELLOW)
  - 3 12" (300) DIAGONAL (YELLOW)
  - 4 4" (100) DOUBLE YELLOW (NARROW)
  - 5 12" (300) SOLID WHITE
  - 6 4" (100) DOUBLE YELLOW (WIDE)
  - 7 6" (150) SKIP-DASH (WHITE)
  - 8 4" (100) SOLID (WHITE)
  - 9 12" (300) DIAGONAL (WHITE)
  - 10 6" (150) SOLID (WHITE)
  - 11 24" (600) STOP BAR (WHITE)
  - 12 8" (200) SOLID (WHITE)
  - 13 4" (100) PARKING WHITE
- 

### PAVEMENT MARKINGS AT RAILROAD-HIGHWAY GRADE CROSSING

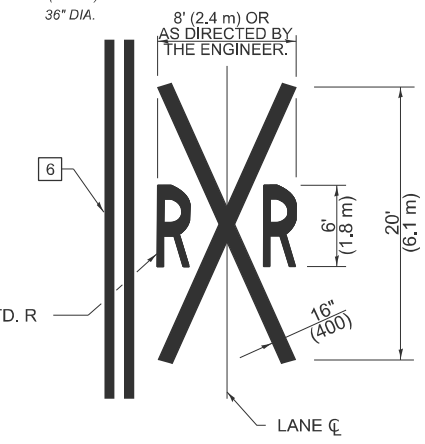


### NOTES

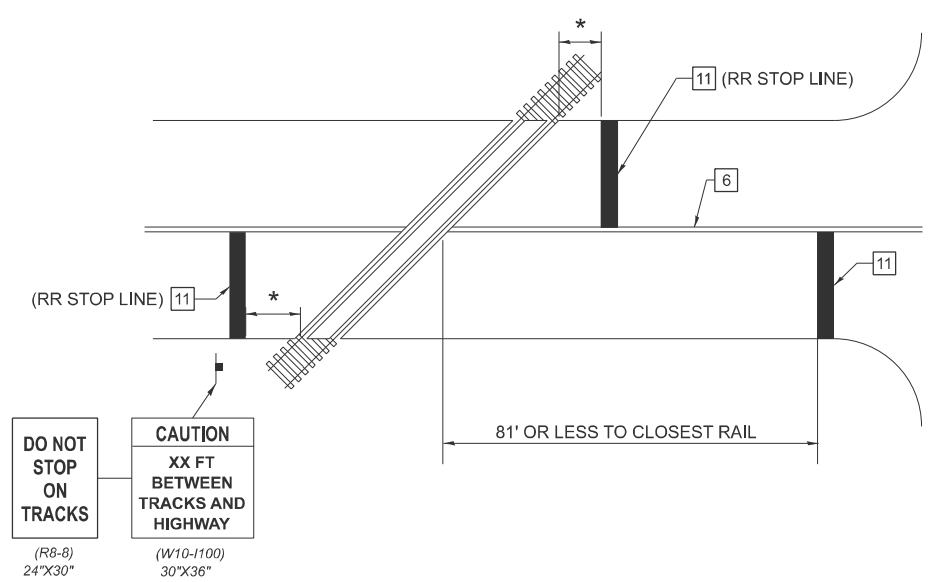
THE TRAVERSE SPREAD OF THE "X" MAY VARY ACCORDING TO LANE WIDTH.

ON MULTI-LANE ROADS, THE STOP LINES SHALL EXTEND ACROSS ALL APPROACH LANES AND SEPARATE RXR SYMBOLS SHALL BE PLACED ADJACENT TO EACH OTHER IN EACH LANE.

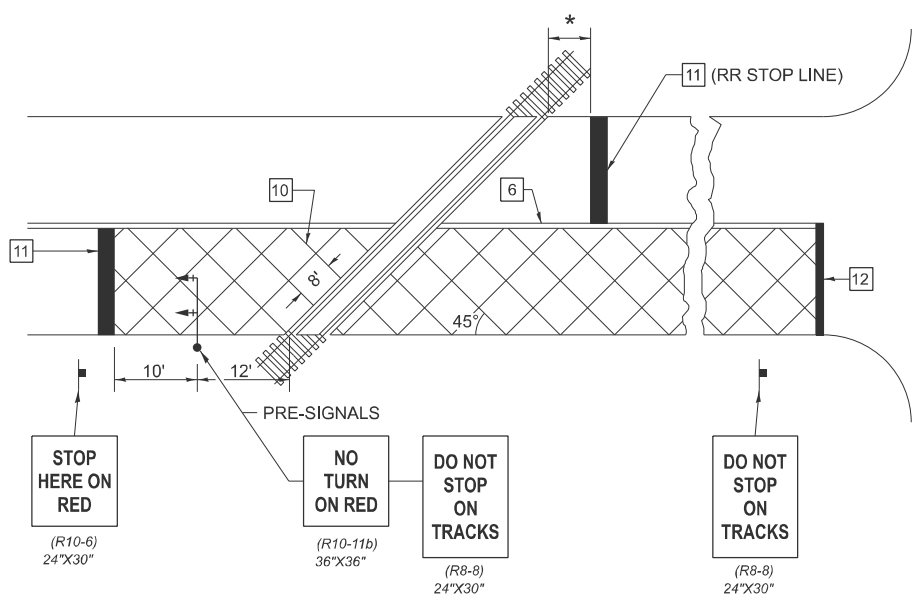
WHEN THE PAVEMENT MARKING SYMBOL IS USED, A PORTION OF THE SYMBOL SHOULD BE LOCATED DIRECTLY ADJACENT TO THE ADVANCE WARNING SIGN (W10-1) AS PLACED BY TABLE II-1, CONDITION B OF THE MUTCD.



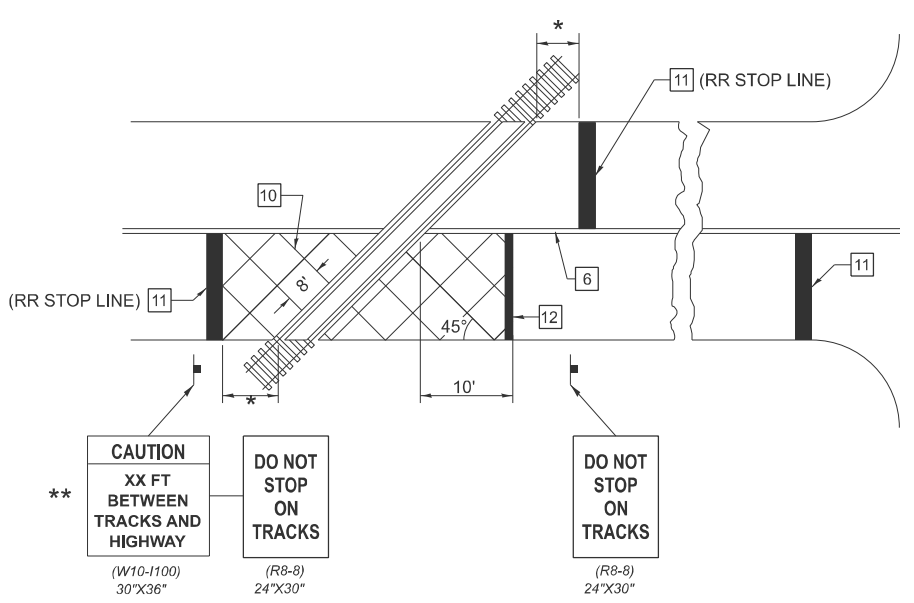
### RAILROAD CROSSING WITH NON-SIGNALIZED INTERSECTION



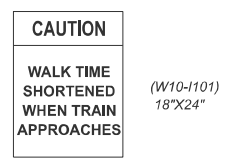
### RAILROAD CROSSING WITH INTERCONNECT AND PRE-SIGNALS



### RAILROAD CROSSING WITH INTERCONNECT ONLY



- ### GENERAL NOTES
- SUPPLEMENTAL PAVEMENT MARKINGS TO BE INSTALLED ONLY ON APPROACHES TO INTERSECTIONS CONTROLLED BY TRAFFIC SIGNALS WHICH ARE INTERCONNECTED WITH THE RAILROAD WARNING SIGNALS.
  - EXTEND PAVEMENT MARKINGS TO THE INTERSECTION ONLY WHERE PRE-SIGNALS ARE USED.
  - WHEN PEDESTRIAN SIGNALS ARE PRESENT WITH INTERCONNECTED SIGNALS, WARNING SIGN W10-1101 (18"X24") SHALL BE PLACED NEAR EACH PEDESTRIAN SIGNAL HEAD. COUNTDOWN PEDESTRIAN SIGNAL HEADS SHALL NOT BE UTILIZED ALONG WITH INTERCONNECTED SIGNALS.
  - PLEASE REFER TO THE IDOT BUREAU OF OPERATION MEMO OPS T-06 DATED DECEMBER 1, 2020 FOR ADDITIONAL INFORMATION.



NOT TO SCALE

Note: All dimensions are in INCHES (millimeters) unless otherwise shown.

### DISTRICT 7 DETAIL NO. 78000001

MODEL: PVT MPRK DET 4 (Sheet)  
FILE NAME: c:\pdx\_work\pvt\mprit\mrit\0910695\0774C58-shit-Details.dgn

USER NAME = kaleb.hirtzel	DESIGNED -	REVISED - NAS 06/22
	DRAWN -	REVISED -
	CHECKED -	REVISED -
PLOT DATE = 6/27/2024	DATE -	REVISED -

STATE OF ILLINOIS  
DEPARTMENT OF TRANSPORTATION

PAVEMENT MARKING AND RAISED REFLECTIVE PAVEMENT MARKERS  
(RURAL & URBAN APPLICATIONS)

SCALE: SHEET 4 OF 4 SHEETS STA. TO STA.

F.A.P. RTE.	SECTION	COUNTY	TOTAL SHEETS	SHEET NO.
832	D7 BRIDGE REPAIRS 2025-9	CLARK	16	16
CONTRACT NO. 74C58				
ILLINOIS FED. AID PROJECT				

D7 BRIDGE REPAIRS 2025-9