

F.A.U. RTE.	SECTION	COUNTY	TOTAL SHEETS	SHEET NO.
6750	20-00172-00-RS	TAZEWELL	22	1
		ILLINOIS	CONTRACT NO. 89803	

09-20-2024 LETTING ITEM 072

FOR INDEX OF SHEETS, SEE SHEET NO. 2
FOR LIST OF STANDARDS, SEE SHEET NO. 2

STATE OF ILLINOIS
DEPARTMENT OF TRANSPORTATION

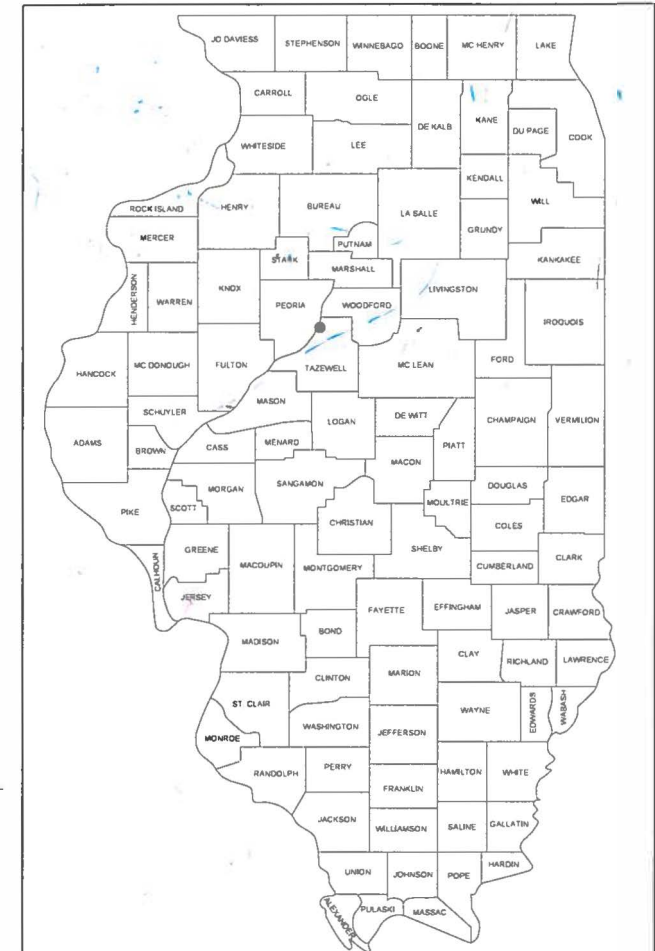
DIVISION OF HIGHWAYS
**PROPOSED
HIGHWAY PLANS**

E. WASHINGTON ST.
SECTION 20-00172-00-RS
PROJECT NO. UB2P(243)
MILL AND OVERLAY
CITY OF EAST PEORIA
TAZEWELL COUNTY
C-94-024-21

DESIGN DESIGNATION

FAU 6750
(E. WASHINGTON ST.)

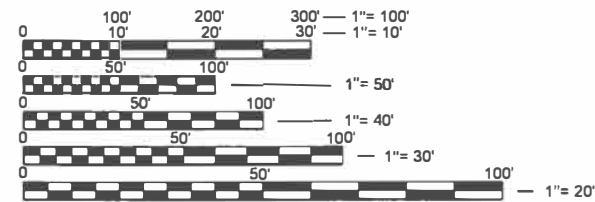
FUNC. CLASS.	MINOR ARTERIAL
2018 ADT	11050
PERCENT TRUCKS	2%
2043 ADT	19958
MU	111
SU	110
PV	10829
DESIGN SPEED (MPH)	30



LOCATION OF SECTION INDICATED THUS: ●

DRAWING SCALES

PLAN 1" = 20'
PROFILE HORIZONTAL: 1" = 20'



FULL SIZE PLANS HAVE BEEN PREPARED USING STANDARD ENGINEERING SCALES. REDUCED SIZED PLANS WILL NOT CONFORM TO STANDARD SCALES. IN MAKING MEASUREMENTS ON REDUCED PLANS, THE ABOVE SCALES MAY BE USED.

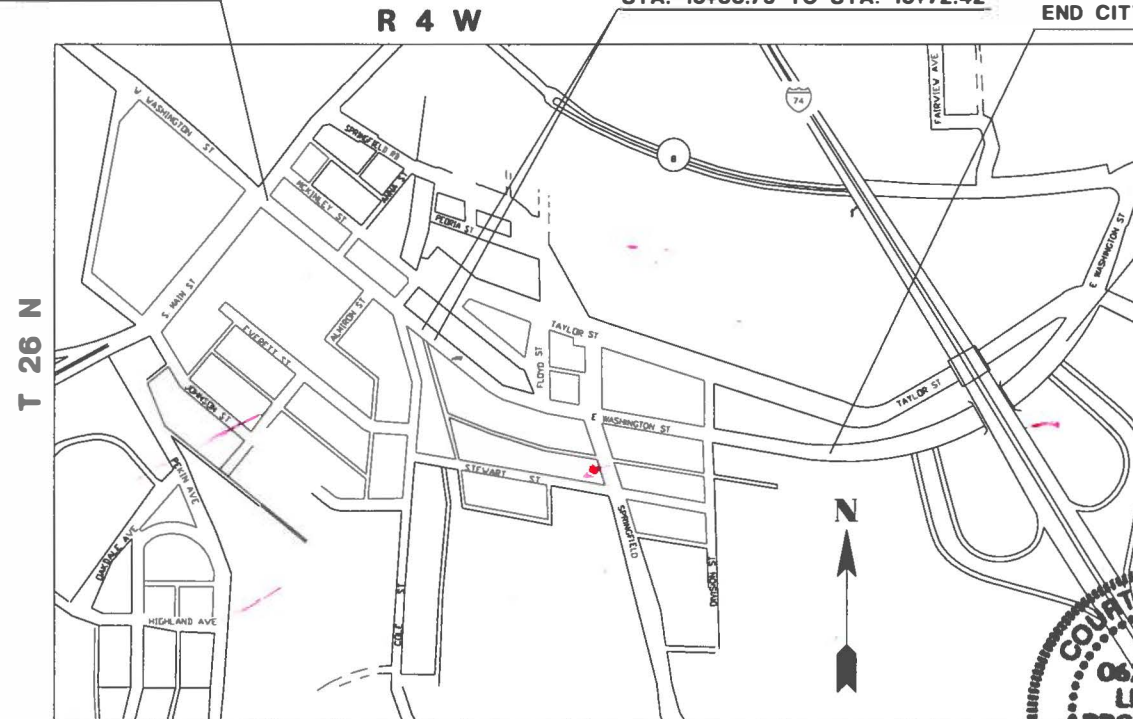
J.U.L.I.E.
JOINT UTILITY LOCATION INFORMATION FOR EXCAVATION
1-800-892-0123
OR 811

BEGIN CITY IMPROVEMENTS
STA. 7+28.55

BRIDGE OMISSION
S.N. 090-2001
STA. 15+33.79 TO STA. 15+72.42

STATION EQUATION
STA. 34+33.41 = STA. 134+33.41
END CITY / BEGIN IDOT IMPROVEMENTS

END IDOT IMPROVEMENTS
STA. 146+21.35



4TH P.M.

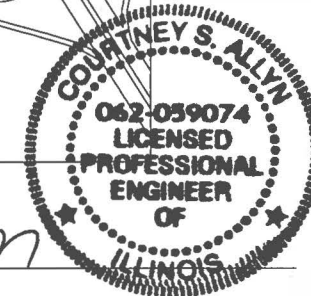
LOCATION MAP



MW
Midwest Engineering
Associates, Inc.

140 E. Washington Street
East Peoria, Illinois 61611
309.222.8600
www.mweainc.com

IL Design Firm Reg. No.
184-005896



C Allyn
COURTNEY ALLYN
DATE 7-16-24

ILLINOIS REGISTERED PROFESSIONAL ENGINEER
No. 062-059074
EXPIRATION DATE 11/30/2025

APPROVED
John P. Kohl 07-16-24
CITY OF EAST PEORIA MAYOR

PASSED July 18, 2024
Tony Bassine MH
DISTRICT FOUR ENGINEER OF LOCAL ROADS & STREETS

RELEASING FOR BID BASED ON LIMITED REVIEW July 19, 2024
Paula A. James
REGION THREE ENGINEER
STATE OF ILLINOIS
DEPARTMENT OF TRANSPORTATION

CONTRACT NO: 89803
CATALOG NO: 036137-00

GROSS LENGTH = 3893 FT. = 0.74 MILES
NET LENGTH = 3854 FT. = 0.73 MILES

PRINTED BY THE AUTHORITY
OF THE STATE OF ILLINOIS

PLAN	SURVEYED	BY	DATE
NOTE BOOK NO.	PLOTTED		
	ALIGNMENT		
	STRUCTURE		
	ROAD FILE NAME		

PROFILE	SURVEYED	BY	DATE
NOTE BOOK NO.	PLOTTED		
	GRADES CHECKED		
	STRUCTURE NOTATIONS CHECKED		

S:\Engineering\Projects\East Peoria\20230048 East Washington St Resurfacing\400 CAD\403 Plans\CT100-GENLEG.dwg

INDEX OF SHEETS

1	COVER
2	INDEX OF SHEETS, COMMITMENTS, AND LIST OF OF STANDARDS
3	GENERAL AND PROJECT SPECIFIC NOTES
4	SUMMARY OF QUANTITIES
5	TYPICAL SECTIONS
6-7	SCHEDULE OF QUANTITIES
8	ALIGNMENT AND CONTROL POINTS
9-17	PLAN SHEETS
18-22	DISTRICT STANDARDS

LIST OF IDOT D4 STANDARDS

406101-D4	BUTT JOINTS
780001-D4	TYPICAL PAVEMENT MARKINGS

LIST OF HIGHWAY STANDARDS

000001-08	STANDARD SYMBOLS, ABBREVIATIONS AND PATTERNS
001006	DECIMAL OF AN INCH AND OF A FOOT
701427-05	LANE CLOSURE, MULTILANE, INTERMITTENT OR MOVING OPERATIONS, FOR SPEEDS ≤ 40 MPH
701601-09	URBAN LANE CLOSURE MULTILANE, 1W 2W WITH NONTRAVERSABLE MEDIAN
701602-10	URBAN LANE CLOSURE MULTILANE, 2W WITH BIDIRECTIONAL LEFT TURN LANE
701901-09	TRAFFIC CONTROL DEVICES
780001-05	TYPICAL PAVEMENT MARKINGS

CITY OF EAST PEORIA CONTACT INFORMATION

RIC SEMONSKI
 SUPERVISOR OF STREETS
 CITY OF EAST PEORIA
 DEPARTMENT OF PUBLIC WORKS
 2232 E. WASHINGTON STREET
 EAST PEORIA, ILLINOIS 61611
 PHONE #309-427-7655

MW
 Midwest Engineering
 Associates, Inc.
 140 E. Washington Street
 East Peoria, Illinois 61611
 309.689.8085
 IL Design Firm Reg. No.
 184-005896

USER NAME = Courtney Allyn	DESIGNED - CSA	REVISED - -----
PROJECT # = 20230048	DRAWN - EGW	REVISED - -----
PLOT SCALE = 1:2	CHECKED - RDC	REVISED - -----
PLOT DATE = 12/18/2023	DATE - 7/2/2024	REVISED - -----

CITY OF EAST PEORIA

INDEX OF SHEETS, COMMITMENTS, AND LIST OF STANDARDS

SCALE:	SHEET	OF	SHEETS	STA.	TO	STA.
--------	-------	----	--------	------	----	------

F.A.U. RTE.	SECTION	COUNTY	TOTAL SHEETS	SHEET NO.
6750	20-00172-00-RS	TAZEWELL	22	2
FED. PROJECT NO.		CONTRACT NO. 89803		
ILLINOIS		FED. AID PROJECT		

GENERAL NOTES

BITUMINOUS MATERIAL (TACK COAT) RATES

SURFACE TYPE	RESIDUAL RATE
MILLED (HMA OR PCC)	0.08 LBS/SF
EXISTING PAVEMENT	0.08 LBS/SF
FOG COAT (BETWEEN LIFTS)	0.08 LBS/SF

HOT-MIX ASPHALT MIXTURE REQUIREMENTS

THE FOLLOWING MIXTURE REQUIREMENTS ARE APPLICABLE FOR THIS PROJECT:

LOCATION:	E. WASHINGTON ST. - STA 7+28.55 TO STA. 34+33.41	E. WASHINGTON ST. - STA. 134+33.41 TO STA. 146+21.35	E. WASHINGTON ST. - STA. 134+33.41 TO STA. 146+21.35
MIXTURE USES:	POLYMER SURFACE COURSE, 1.5"	POLYMER SURFACE COURSE, 1.75"	POLYMER BINDER COURSE, 2"
AG/PG:	SBS or SBR 70-28	SBS or SBR 70-28	SBS or SBR 70-28
DESIGN AIR VOIDS:	4% @ N50	4% @ N50	4% @ N50
MIXTURE COMPOSITION(MIXTURE GRADATION):	IL 9.5	IL 9.5	IL 9.5
FRICTION AGGREGATE	MIX D	MIX D	N/A
QUALITY MANAGEMENT	QCQA	QCQA	QCQA
MATERIAL TRANSFER DEVICE:	YES (LIGHT WEIGHT)	YES (LIGHT WEIGHT)	YES (LIGHT WEIGHT)

- INDIVIDUAL LIFT THICKNESS OF EACH MIX WILL BE NO LESS THAN THREE (3) TIMES NOMINAL MAXIMUM AGGREGATE SIZE AND NO MORE THAN SIX (6) TIMES NOMINAL AGGREGATE MAXIMUM SIZE, UNLESS OTHERWISE APPROVED BY THE ENGINEER.
- FOR DESIGN PURPOSES, MIXTURE WEIGHT FOR ALL MIXES IS DETERMINED TO BE 112.0 LB/SQ. YARD/IN., UNLESS OTHERWISE NOTED.
- SUBLOT SIZES FOR PFP AND QCP MIXES WILL BE 600 TONS, UNLESS OTHERWISE AGREED TO BY THE ENGINEER AND THE PAVING CONTRACTOR.

ADDITIONAL SUPPLEMENTAL TRAFFIC CONTROL

THE DEPARTMENT RESERVES THE RIGHT AT ANY TIME TO ADD ADDITIONAL TRAFFIC CONTROL SYSTEMS OR DEVICES WITHIN THE ACTIVE CONTRACT LIMITS, BY MEANS OF AN ADDITIONAL CONTRACT. ALL TERMS OF ARTICLE 105.08 OF THE STANDARD SPECIFICATIONS SHALL BE FOLLOWED BY EACH CONTRACTOR.

AVAILABILITY OF ELECTRONIC FILES

ELECTRONIC FILES OF THIS PROJECT WILL BE MADE AVAILABLE TO THE CONTRACTOR AFTER CONTRACT AWARD. IF THERE IS A CONFLICT BETWEEN THE ELECTRONIC FILES AND THE PRINTED CONTRACT PLANS AND DOCUMENTS, THE PRINTED CONTRACT PLANS AND DOCUMENTS SHALL TAKE PRECEDENCE OVER THE ELECTRONIC FILES. THE CONTRACTOR SHALL ACCEPT ALL RISK ASSOCIATED WITH USING THE ELECTRONIC FILES AND SHALL HOLD THE DEPARTMENT HARMLESS FOR ANY ERRORS OR OMISSIONS IN THE ELECTRONIC FILES AND THE DATA CONTAINED THEREIN. ERRORS OR DELAYS RESULTING FROM THE USE OF THE ELECTRONIC FILES BY THE CONTRACTOR SHALL NOT RESULT IN AN EXTENSION OF TIME FOR ANY INTERIM OR FINAL COMPLETION DATE OR SHALL NOT BE CONSIDERED CAUSE FOR ADDITIONAL COMPENSATION. THE CONTRACTOR SHALL NOT USE, SHARE, OR DISTRIBUTE THESE ELECTRONIC FILES EXCEPT FOR THE PURPOSE OF CONSTRUCTING THIS CONTRACT. ANY CLAIMS BY THIRD PARTIES DUE TO USE OR ERRORS SHALL BE THE SOLE RESPONSIBILITY OF THE CONTRACTOR. THE CONTRACTOR SHALL INCLUDE THIS DISCLAIMER WITH THE TRANSFER OF THESE ELECTRONIC FILES TO ANY OTHER PARTIES AND SHALL INCLUDE APPROPRIATE LANGUAGE BINDING THEM TO SIMILAR RESPONSIBILITIES.

CONSECUTIVE SIDE STREET (ROAD) CLOSURE - PROHIBITED

1. NO TWO CONSECUTIVE SIDE STREETS (ROADS) MAY BE CLOSED AT THE SAME TIME DURING CONSTRUCTION. THE CONTRACTOR MUST ALTERNATE STREETS (ROADS).

2. ADJACENT SIDEROADS WILL NOT BE CLOSED SIMULTANEOUSLY. BLR STANDARD 21 SHALL BE USED FOR ALL LOCAL ROAD CLOSURES WITHOUT ANY ENTRANCES WITHIN THE CLOSED AREA. BLR STANDARD 22 CAN BE USED WHERE IT IS NECESSARY TO ALLOW LOCAL TRAFFIC ACCESS.

PAVING SURFACE COURSE

CONTINUOUS PAVING OPERATIONS ON THE MAIN ROADWAY SHALL BE MAINTAINED AT ALL TIMES DURING THE CONSTRUCTION OF THE HOT-MIX ASPHALT SURFACE. NO INTERRUPTIONS FOR SIDE ROADS, ENTRANCES, TURN LANES, ETC. WILL BE ALLOWED.

TAPER REMOVAL @ FRAME & GRATES ADJUSTED BY OTHERS

AT LOCATIONS WHERE FRAMES AND GRATES HAVE PREVIOUSLY BEEN ADJUSTED BY OTHERS AND THEY ARE SURROUNDED BY HOT-MIX ASPHALT TAPERS, THE CONTRACTOR FOR THIS CONTRACT SHALL REMOVE AND DISPOSE OF THE HOT-MIX ASPHALT TAPER MATERIAL PRIOR TO THE PLACEMENT OF THE HOT-MIX ASPHALT SURFACE COURSE. THIS WORK WILL NOT BE PAID FOR SEPARATELY, BUT WILL BE CONSIDERED AS INCLUDED IN THE COST OF THE HOT-MIX ASPHALT SURFACE COURSE PAY ITEM.

CROSSING EXISTING STRUCTURES WITH EQUIPMENT

THE FOLLOWING STRUCTURES, SN 090-2001, MAY NOT BE CROSSED WITH AN MTD.

ANY STRUCTURE NOT LISTED ABOVE SHALL BE VERIFIED BY THE RESIDENT PRIOR TO BEGINNING WORK.

PROJECT SPECIFIC NOTES

- THE TERMS CITY AND OWNER AS REFERENCED THROUGHOUT THE PLANS AND SPECIFICATIONS/SPECIAL PROVISIONS IS DEFINED AS THE CITY OF EAST PEORIA.
- CONTRACTOR SHALL FURNISH, ERECT, AND MAINTAIN MARKINGS AND ASSOCIATED LIGHTING OF OPEN TRENCHES, EXCAVATIONS, TEMPORARY STOCK PILES, AND PARKED CONSTRUCTION EQUIPMENT THAT MAY POSE A POTENTIAL HAZARD TO DAILY OPERATIONS.
- PRIOR TO BEGINNING OF PROJECT, CONTRACTOR SHALL VERIFY ALL MEASUREMENTS AND DIMENSIONS SHOWN AND SHALL REPORT TO CITY AND ENGINEER ANY DISCREPANCIES WHICH MAY AFFECT THE PERFORMANCE OF THE WORK IN ACCORDANCE WITH THE CONTRACT DRAWINGS AND SPECIFICATIONS.
- PRIOR TO BEGINNING CONSTRUCTION, REVISIONS TO THE PROPOSED MAINTENANCE OF TRAFFIC PLAN MAY BE DEVELOPED BY CONTRACTOR BASED UPON COLLABORATION WITH AND APPROVAL BY CITY.
- CONTRACTOR IS RESPONSIBLE FOR OBTAINING ALL NECESSARY PERMITS.
- CONTRACTOR PARKING SHALL BE COORDINATED WITH CITY.
- ALL SIGNS, TRAFFIC CONTROL DEVICES, ETC. SHALL BE IN ACCORDANCE WITH THE STANDARD SPECIFICATIONS - CURRENT EDITION, THE APPLICABLE GUIDELINES IN THE MANUAL ON UNIFORM TRAFFIC CONTROL DEVICES - CURRENT EDITION, THE APPLICABLE GUIDELINES IN THE ILLINOIS MANUAL ON TRAFFIC CONTROL DEVICES FOR STREETS AND HIGHWAYS - CURRENT EDITION, THE SPECIAL PROVISIONS, ANY SPECIAL DETAILS, AND ILLINOIS DEPARTMENT OF TRANSPORTATION HIGHWAY STANDARDS CONTAINED IN THE CONTRACT DOCUMENTS.
- CONTRACTORS BIDDING THIS PROJECT SHALL VISIT THE SITE BEFORE BIDDING.
- ALL ITEMS TO BE REMOVED SHALL BE LEGALLY DISPOSED OFF-SITE UNLESS DIRECTED OTHERWISE IN WRITING BY OWNER.
- THE NORTHBOUND THROUGH LANES ON MAIN ST. MAY BE REDUCED TO 1 LANE BETWEEN THE HOURS OF 9 A.M. AND 3 P.M. THIS LANE SHALL BE CLOSED IN ACCORDANCE WITH HIGHWAY STANDARD 701427 ONLY FOR THE DURATION NEEDED TO BEGIN EACH PASS OF RESURFACING WORK. ONCE WORKERS AND EQUIPMENT ARE NO LONGER WITHIN 15' OF THE EDGE OF MAIN ST. THE THROUGH LANE SHALL BE REOPENED.

CITY OF EAST PEORIA CONTACT INFORMATION

RIC SEMONSKI
SUPERVISOR OF STREETS
CITY OF EAST PEORIA
DEPARTMENT OF PUBLIC WORKS
2232 E. WASHINGTON STREET
EAST PEORIA, ILLINOIS 61611
PHONE #309-427-7655

PLAN	SURVEYED	BY	DATE
NOTE BOOK NO.	PLOTTED		
	GRADES CHECKED		
	ALIGNMENT CHECKED		
	STRUCTURE NOTATIONS CHECKED		
	CADD FILE NAME		

PROFILE	SURVEYED	BY	DATE
NOTE BOOK NO.	PLOTTED		
	GRADES CHECKED		
	ALIGNMENT CHECKED		
	STRUCTURE NOTATIONS CHECKED		

S:\Engineering\Projects\East Peoria\20230048 East Washington St Resurfacing\400 CAD\403 Plans\CT100-GENLEG.dwg

140 E. Washington Street
East Peoria, Illinois 61611
309.689.8085
IL Design Firm Reg. No.
184-005896

USER NAME = Courtney Allyn	DESIGNED - CSA	REVISED - -----
PROJECT # = 20230048	DRAWN - EGW	REVISED - -----
PLOT SCALE =	CHECKED - RDC	REVISED - -----
PLOT DATE = 12/18/2023	DATE - 7/2/2024	REVISED - -----

CITY OF EAST PEORIA

GENERAL AND PROJECT SPECIFIC NOTES

SCALE: SHEET OF SHEETS STA. TO STA.

F.A.U. RTE.	SECTION	COUNTY	TOTAL SHEETS	SHEET NO.
6750	20-00172-00-RS	TAZEWELL	22	3
FED. PROJECT NO.		CONTRACT NO. 89803		
ILLINOIS FED. AID PROJECT				

PLAN	SURVEYED	BY	DATE
NOTE BOOK	ALIGNED		
NO.	RT. OF WAY CHECKED		
	ADD FILE NAME		

PROFILE	SURVEYED	BY	DATE
NOTE BOOK	GRADES CHECKED		
NO.	BLU. NOTED		
	STRUCTURE NOTATIONS CHECKED		

S:\Engineering\Projects\East Peoria\20230048 East Washington St Resurfacing\400 CAD\403 Plans\C100-500.dwg

SUMMARY OF QUANTITIES						
SPECIALTY ITEM	PAY CODE	PAY ITEM	UNIT	CITY QUANTITY	IDOT QUANTITY	TOTAL QUANTITY
	40600285	POLYMERIZED BITUMINOUS MATERIALS (TACK COAT)	POUND	10,289	12,538	22,827
	40600982	HOT-MIX ASPHALT SURFACE REMOVAL - BUTT JOINT	SQ YD	269	139	408
	40600990	TEMPORARY RAMP	SQ YD	749	1,292	2,041
	40603205	POLYMERIZED HOT-MIX ASPHALT BINDER COURSE, IL-9.5, N50	TON		1,098	1,098
	40604160	POLYMERIZED HOT-MIX ASPHALT SURFACE COURSE, IL-9.5, MIX "D", N50	TON	1,201	854	2,055
	44000155	HOT-MIX ASPHALT SURFACE REMOVAL, 1 1/2"	SQ YD	14,290		14,290
	44000164	HOT-MIX ASPHALT SURFACE REMOVAL, 3 3/4"	SQ YD		8,707	8,707
	67100100	MOBILIZATION	L SUM	0.4	0.6	1
	70300100	SHORT TERM PAVEMENT MARKING	FOOT	8,771	463	9,234
	70300150	SHORT TERM PAVEMENT MARKING REMOVAL	SQ FT	2,924	155	3,079
	70300211	TEMPORARY PAVEMENT MARKING LETTERS AND SYMBOLS - PAINT	SQ FT	325	63	388
	70300221	TEMPORARY PAVEMENT MARKING - LINE 4"- PAINT	FOOT	5,403	2,258	7,661
	70300241	TEMPORARY PAVEMENT MARKING - LINE 6"- PAINT	FOOT	1,758	644	2,402
	70300251	TEMPORARY PAVEMENT MARKING - LINE 8"- PAINT	FOOT	1,986	201	2,187
	70300261	TEMPORARY PAVEMENT MARKING - LINE 12"- PAINT	FOOT	21	39	60
	70300281	TEMPORARY PAVEMENT MARKING - LINE 24"- PAINT	FOOT	328		328
*	78009000	MODIFIED URETHANE PAVEMENT MARKING - LETTERS AND SYMBOLS	SQ FT	325	63	388
*	78009004	MODIFIED URETHANE PAVEMENT MARKING - LINE 4"	FOOT	5,403	2,258	7,661
*	78009006	MODIFIED URETHANE PAVEMENT MARKING - LINE 6"	FOOT	1,758	644	2,402
*	78009008	MODIFIED URETHANE PAVEMENT MARKING - LINE 8"	FOOT	1,986	201	2,187
*	78009012	MODIFIED URETHANE PAVEMENT MARKING - LINE 12"	FOOT	21	39	60
*	78009024	MODIFIED URETHANE PAVEMENT MARKING - LINE 24"	FOOT	328		328
*	78011000	GROOVING FOR RECESSED PAVEMENT MARKING, LETTERS AND SYMBOLS	SQ FT	358	39	397
*	78011025	GROOVING FOR RECESSED PAVEMENT MARKING 5"	FOOT	5,403	2,258	7,661
*	78011035	GROOVING FOR RECESSED PAVEMENT MARKING 7"	FOOT	1,758	644	2,402
*	78011045	GROOVING FOR RECESSED PAVEMENT MARKING 9"	FOOT	1,986	201	2,187
*	78011065	GROOVING FOR RECESSED PAVEMENT MARKING 13"	FOOT	21	39	60
*	78011125	GROOVING FOR RECESSED PAVEMENT MARKING 25"	FOOT	328		328
	78300202	PAVEMENT MARKING REMOVAL - WATER BLASTING	SQ FT	5,006	1,311	6,317
	X7010228	TRAFFIC CONTROL AND PROTECTION, STANDARD 701601 (SPECIAL)	L SUM		1	1
	X7010230	TRAFFIC CONTROL AND PROTECTION, STANDARD 701602 (SPECIAL)	L SUM	1		1
	Z0013798	CONSTRUCTION LAYOUT	L SUM	0.6	0.4	1
	Z0034105	MATERIAL TRANSFER DEVICE	TON		1,951	1,951

MW Midwest Engineering Associates, Inc.
 140 E. Washington Street
 East Peoria, Illinois 61611
 309.686.8085
 IL Design Firm Reg. No. 184-005896

USER NAME = Courtney Allyn	DESIGNED - CSA	REVISED -
PROJECT # = 20230048	DRAWN - EGW	REVISED -
PLOT SCALE = 1:2	CHECKED - RDC	REVISED -
PLOT DATE = 12/18/2023	DATE - 7/2/2024	REVISED -

CITY OF EAST PEORIA

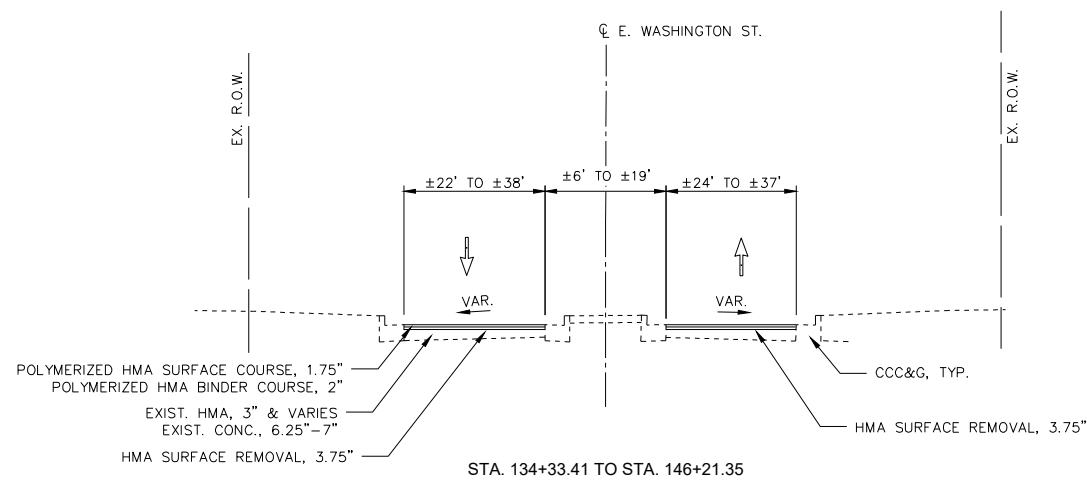
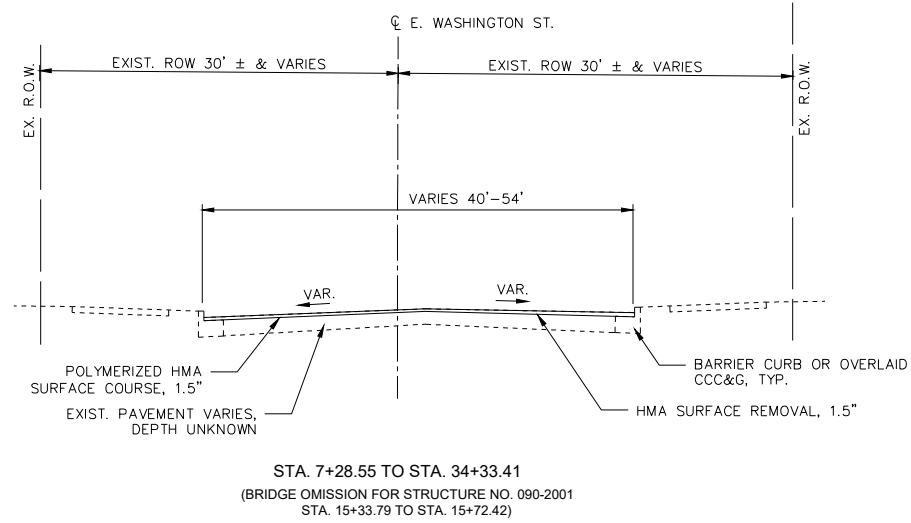
SUMMARY OF QUANTITIES

SCALE: SHEET OF SHEETS STA. TO STA.

F.A.U. RTE. 6750	SECTION 20-00172-00-R5	COUNTY TAZEWELL	TOTAL SHEETS 22	SHEET NO. 4
FED. PROJECT NO.		CONTRACT NO. 69803		
[ILLINOIS] FED. AID PROJECT				

PLAN	SURVEYED	BY	DATE
	PLOTTED		
	GRADES CHECKED		
	ALIGNMENT CHECKED		
	STRUCTURE NOTATIONS CHECKED		
	NOTE BOOK NO.		
	CADD FILE NAME		

PROFILE	SURVEYED	BY	DATE
	PLOTTED		
	GRADES CHECKED		
	ALIGNMENT CHECKED		
	STRUCTURE NOTATIONS CHECKED		
	NOTE BOOK NO.		
	CADD FILE NAME		



NOTES:

1. THE 3.75" HMA SURFACE REMOVAL SHALL INCLUDE MILLING UP TO 0.75" INTO THE CONCRETE BASE.
2. AT THE DIRECTION OF THE ENGINEER, ADDITIONAL HAND OR MACHINE WORK MAY BE NECESSARY TO REMOVE ANY REMAINING VENEER OF BITUMINOUS PAVEMENT WHICH MAY BE LEFT IN PLACE BEHIND THE MILLING MACHINE. THIS WORK WILL BE PAID IN ACCORDANCE WITH ARTICLE 109.04.

S:\Engineering\Projects\East Peoria\20230048 East Washington St Resurfacing\400 CAD\403 Plans\TYP SEC.dwg

MW
Midwest Engineering
Associates, Inc.

140 E. Washington Street
East Peoria, Illinois 61611
309.689.8085

USER NAME = Courtney Allyn	DESIGNED - CSA	REVISED - -----
PROJECT # = 20230048	DRAWN - EGW FUH	REVISED - -----
PLOT SCALE = 1:2	CHECKED - RDC	REVISED - -----
PLOT DATE = 12/18/2023	DATE - 7/2/2024	REVISED - -----

CITY OF EAST PEORIA

TYPICAL SECTIONS

SCALE: 1:20 SHEET 3 OF 5 SHEETS STA. TO STA.

F.A.U. RTE.	SECTION	COUNTY	TOTAL SHEETS	SHEET NO.
6750	20-00172-00-RS	TAZEWELL	22	5
FED. PROJECT NO.		CONTRACT NO. 89803		
ILLINOIS FED. AID PROJECT				

PLAN	SURVEYED	DATE
NOTE BOOK NO.	PLOTTED	BY
	CHECKED	
	ALIGNMENT	
	STRUCTURE	
	CAD FILE NAME	

PROFILE	SURVEYED	DATE
NOTE BOOK NO.	PLOTTED	BY
	CHECKED	
	GRADES	
	STRUCTURE	
	NOTATMS	
	CHFD	

S:\Engineering\Projects\East Peoria\20230048 East Washington St Resurfacing\400 CAD\403 Plans\C100-S00.dwg

PAVEMENT SCHEDULE			POLYMERIZED BITUMINOUS MATERIALS (TACK COAT)	HOT-MIX ASPHALT SURFACE REMOVAL - BUTT JOINT	TEMPORARY RAMP	POLYMERIZED HOT-MIX ASPHALT BINDER COURSE, IL-9.5, N50	POLYMERIZED HOT-MIX ASPHALT SURFACE COURSE, IL-9.5, MIX "D", N50	HOT-MIX ASPHALT SURFACE REMOVAL, 1 1/2"	HOT-MIX ASPHALT SURFACE REMOVAL, 3 3/4"	MATERIAL TRANSFER DEVICE
LOCATION			POUND	SQ YD	SQ YD	TON	TON	SQ YD	SQ YD	TON
CITY										
BEGIN	TO	STA. 11+50	2,167.9	137.8	68.9		252.9	3,011.0		
STA. 11+50	TO	STA. 16+50	1,944.6	68.9	87.8		226.9	2,700.8		
STA. 16+50	TO	STA. 21+00	1,507.0		165.6		175.8	2,093.0		
STA. 21+00	TO	STA. 26+50	2,106.7	28.9	228.3		245.8	2,925.9		
STA. 26+50	TO	STA. 32+00	1,785.2	33.3	130.6		208.3	2,479.5		
STA. 32+00	TO	END	777.2		67.2		90.7	1,079.4		
IDOT										
BEGIN	TO	STA. 138+50	4,020.5	50.0	484.8	351.8	273.6		2,792.0	625.4
STA. 138+50	TO	STA. 144+00	6,037.1		281.1	528.2	410.9		4,192.4	939.1
STA. 144+00	TO	END	2,479.8	88.9	525.6	217.0	168.8		1,722.1	385.8
CITY SUBTOTAL			10,289	269	749	0	1,201	14,290	0	0
IDOT SUBTOTAL			12,538	139	1,292	1,098	854	0	8,707	1,951
TOTAL			22,827	408	2,041	1,098	2,055	14,290	8,707	1,951

QUANTITIES NOT OTHERWISE SCHEDULED	MOBILIZATION	TRAFFIC CONTROL AND PROTECTION, STANDARD 701601 (SPECIAL)	TRAFFIC CONTROL AND PROTECTION, STANDARD 701602 (SPECIAL)	CONSTRUCTION LAYOUT
LOCATION	L. SUM	L SUM	L SUM	L. SUM
CITY	0.4		1	0.6
IDOT	0.6	1		0.4
TOTAL	1	1	1	1

MW
Midwest Engineering
Associates, Inc.

140 E. Washington Street
East Peoria, Illinois 61611
309.689.8085

IL Design Firm Reg. No.
184-005896

USER NAME = Courtney Allyn	DESIGNED - CSA	REVISED - -----
PROJECT # = 20230048	DRAWN - EGW	REVISED - -----
PLOT SCALE =	CHECKED - RDC	REVISED - -----
PLOT DATE = 12/18/2023	DATE - 7/2/2024	REVISED - -----

CITY OF EAST PEORIA

SCHEDULE OF QUANTITIES

SCALE: SHEET OF SHEETS STA. TO STA.

F.A.U. RTE.	SECTION	COUNTY	TOTAL SHEETS	SHEET NO.
6750	20-00172-00-RS	TAZEWELL	22	6
FED. PROJECT NO.		CONTRACT NO. 89803		
ILLINOIS FED. AID PROJECT				

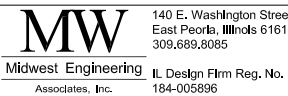
PLAN	SURVEYED	DATE
NOTE BOOK NO.	PLOTTED	BY
	GRADES CHECKED	
	ALIGNMENT CHECKED	
	STRUCTURE NOTATIONS CHECKED	
	CAD FILE NAME	

PROFILE	SURVEYED	DATE
NOTE BOOK NO.	PLOTTED	BY
	GRADES CHECKED	
	ALIGNMENT CHECKED	
	STRUCTURE NOTATIONS CHECKED	
	CAD FILE NAME	

PAVEMENT MARKING SCHEDULE	MODIFIED URETHANE PAVEMENT MARKING - LETTERS AND SYMBOLS		MODIFIED URETHANE PAVEMENT MARKING - LINE 4"	MODIFIED URETHANE PAVEMENT MARKING - LINE 6"	MODIFIED URETHANE PAVEMENT MARKING - LINE 8"	MODIFIED URETHANE PAVEMENT MARKING - LINE 12"	MODIFIED URETHANE PAVEMENT MARKING - LINE 24"	GROOVING FOR RECESSED PAVEMENT MARKING, LETTERS AND SYMBOLS	GROOVING FOR RECESSED PAVEMENT MARKING 5"	GROOVING FOR RECESSED PAVEMENT MARKING 7"	GROOVING FOR RECESSED PAVEMENT MARKING 9"	GROOVING FOR RECESSED PAVEMENT MARKING 13"	GROOVING FOR RECESSED PAVEMENT MARKING 25"	
	WHITE	YELLOW	WHITE	WHITE	YELLOW	WHITE	SQ FT	FOOT	FOOT	FOOT	FOOT	FOOT	FOOT	
LOCATION														
CITY														
BEGIN	TO	STA. 11+50	150.0	831.0	500.0	701.0	150.0	165.0	831.0	500.0	701.0		150.0	
STA. 11+50	TO	STA. 16+50	30.0	844.0	267.0	544.0	21.0	73.0	33.0	844.0	267.0	544.0	21.0	73.0
STA. 16+50	TO	STA. 21+00	39.0	902.0	225.0				42.9	902.0	225.0			
STA 21+00	TO	STA. 26+50	79.2	1,126.0	273.0	741.0			87.1	1,126.0	273.0	741.0		90.0
STA 26+50	TO	STA. 32+00	26.4	1,100.0	349.0				29.0	1,100.0	349.0			15.0
STA 32+00	TO	END		600.0	144.0					600.0	144.0			
IDOT														
BEGIN	TO	STA. 138+50	15.6	780.0	208.0	23.0	6.0		9.7	780.0	208.0	23.0	6.0	
STA. 138+50	TO	STA. 144+00	15.6	1,101.0	308.0	77.0			9.7	1,101.0	308.0	77.0		
STA. 144+00	TO	END	31.2	377.0	128.0	101.0	33.0		19.4	377.0	128.0	101.0	33.0	
CITY SUBTOTAL			325	5,403	1,758	1,986	21	328	358	5,403	1,758	1,986	21	328
IDOT SUBTOTAL			63	2,258	644	201	39	0	39	2,258	644	201	39	0
TOTAL			388	7,661	2,402	2,187	60	328	397	7,661	2,402	2,187	60	328

TEMPORARY PAVEMENT MARKING SCHEDULE	SHORT TERM PAVEMENT MARKING	SHORT TERM PAVEMENT MARKING REMOVAL	TEMPORARY PAVEMENT MARKING LETTERS AND SYMBOLS - PAINT	TEMPORARY PAVEMENT MARKING - LINE 4"- PAINT	TEMPORARY PAVEMENT MARKING - LINE 6"- PAINT	TEMPORARY PAVEMENT MARKING - LINE 8"- PAINT	TEMPORARY PAVEMENT MARKING - LINE 12"- PAINT	TEMPORARY PAVEMENT MARKING - LINE 24"- PAINT	PAVEMENT MARKING REMOVAL - WATER BLASTING	
			WHITE	YELLOW	WHITE	WHITE	YELLOW	WHITE		SQ FT
LOCATION										
CITY										
BEGIN	TO	STA. 11+50	2,371.5	790.5	150.0	831.0	500.0	701.0	150.0	1,444.3
STA. 11+50	TO	STA. 16+50	1,368.3	456.1	30.0	844.0	267.0	544.0	21.0	974.5
STA. 16+50	TO	STA. 21+00	901.7	300.6	39.0	902.0	225.0			452.2
STA 21+00	TO	STA. 26+50	2,357.9	786.0	79.2	1,126.0	273.0	741.0		1,265.0
STA 26+50	TO	STA. 32+00	1,303.8	434.6	26.4	1,100.0	349.0		15.0	597.6
STA 32+00	TO	END	467.6	155.8		600.0	144.0			272.0
IDOT										
BEGIN	TO	STA. 138+50	116.2	38.7	15.6	780.0	208.0	23.0	6.0	400.9
STA. 138+50	TO	STA. 144+00	110.4	36.8	15.6	1,101.0	308.0	77.0		587.9
STA. 144+00	TO	END	235.4	78.5	31.2	377.0	128.0	101.0	33.0	321.2
CITY SUBTOTAL			8,771	2,924	325	5,403	1,758	1,986	21	5,006
IDOT SUBTOTAL			463	155	63	2,258	644	201	39	1,311
TOTAL			9,234	3,079	388	7,661	2,402	2,187	60	6,317

S:\Engineering\Projects\East Peoria\20230048 East Washington St Resurfacing\400 CAD\403 Plans\C100-SQG.dwg



USER NAME = Courtney Allyn	DESIGNED - CSA	REVISED -
PROJECT # = 20230048	DRAWN - EGW	REVISED -
PLOT SCALE =	CHECKED - RDC	REVISED -
PLOT DATE = 12/18/2023	DATE - 7/2/2024	REVISED -

CITY OF EAST PEORIA

SCHEDULE OF QUANTITIES

SCALE: SHEET OF SHEETS STA. TO STA.

F.A.U. RTE.	SECTION	COUNTY	TOTAL SHEETS	SHEET NO.
6750	20-00172-00-RS	TAZEWELL	22	7
FED. PROJECT NO.		CONTRACT NO. 89803		
ILLINOIS FED. AID PROJECT				

PLAN	SURVEYED	DATE
	PLOTTED	
	ALIGNED	
	CHECKED	
	FILED	
	CAD FILE NAME	
NO.		

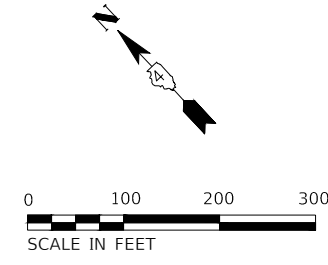
PROFILE	SURVEYED	DATE
	PLOTTED	
	GRADES CHECKED	
	STRUCTURE NOTATIONS CHECKED	
NO.		

S:\Engineering\Projects\East Peoria\20230048 East Washington St Resurfacing\400 CAD\403 Plans\CP AND BM ALIGNMENT.dwg



CURVE NUMBER	PC STA.	PI STA.	PT STA.	DELTA	RADIUS (FT)	T (FT)	L (FT)	E (FT)
C1	19+52.10	20+15.38	20+77.08	22°06'02"	324.00	63.27	124.98	6.12
C2	21+73.63	21+89.94	22+06.22	5°45'42"	324.00	16.30	32.58	0.41
C3	33+04.35	33+98.16	34+88.30	27°44'10"	380.00	93.82	183.95	11.41

CP #	NORTHING	EASTING	ELEVATION	DESCRIPTION
10	1457576.57	2458846.03	458.34	set 1/2 ir w/ org cap
11	1457480.12	2458813.89	457.87	set mag nail
20	1456842.58	2459603.65	463.91	chis x
21	1456774.27	2459720.86	464.18	chis x
22	1456735.75	2459858.76	465.22	set 1/2 ir w/ org cap
23	1456563.53	2459967.12	470.31	set spike
24	1457009.78	2459771.00	462.29	set chis x
25	1456521.43	2459961.24	467.10	set 1/2 ir w/yllw cap
27	1456554.07	2459980.49	470.76	bm chis box
28	1456647.7	2459962.45	469.86	bm chis box
30	1456213.61	2460526.3	469.5	chis x
31	1456246.6	2460636.73	469.6	chis x
32	1456224.75	2460808.71	469.22	chis x
40	1456122.27	2461282.26	466.56	chis x
42	1456062.81	2461269.02	470.28	chis x
50	1456686.75	2462955.38	470.41	set 1/2 ir w/ org cap
51	1456618.99	2462762.65	468.69	chis x
52	1456748.22	2462847.94	472.73	chis x
60	1457151.35	2459380.86	461.87	set 1/2 ir w/org cap
61	1457025.42	2459310.04	464.59	set 1/2 ir w/org cap



MW
Midwest Engineering
Associates, Inc.
140 E. Washington Street
East Peoria, Illinois 61611
309.689.8085
IL Design Firm Reg. No.
184-005896

USER NAME = Courtney Ally	DESIGNED - CSA	REVISED -
PROJECT # = 20230048	DRAWN - EGW FUH	REVISED -
PLOT SCALE = 1:2	CHECKED - RDC	REVISED -
PLOT DATE = 12/18/2023	DATE = 7/2/2024	REVISED -

CITY OF EAST PEORIA

ALIGNMENT AND CONTROL POINTS

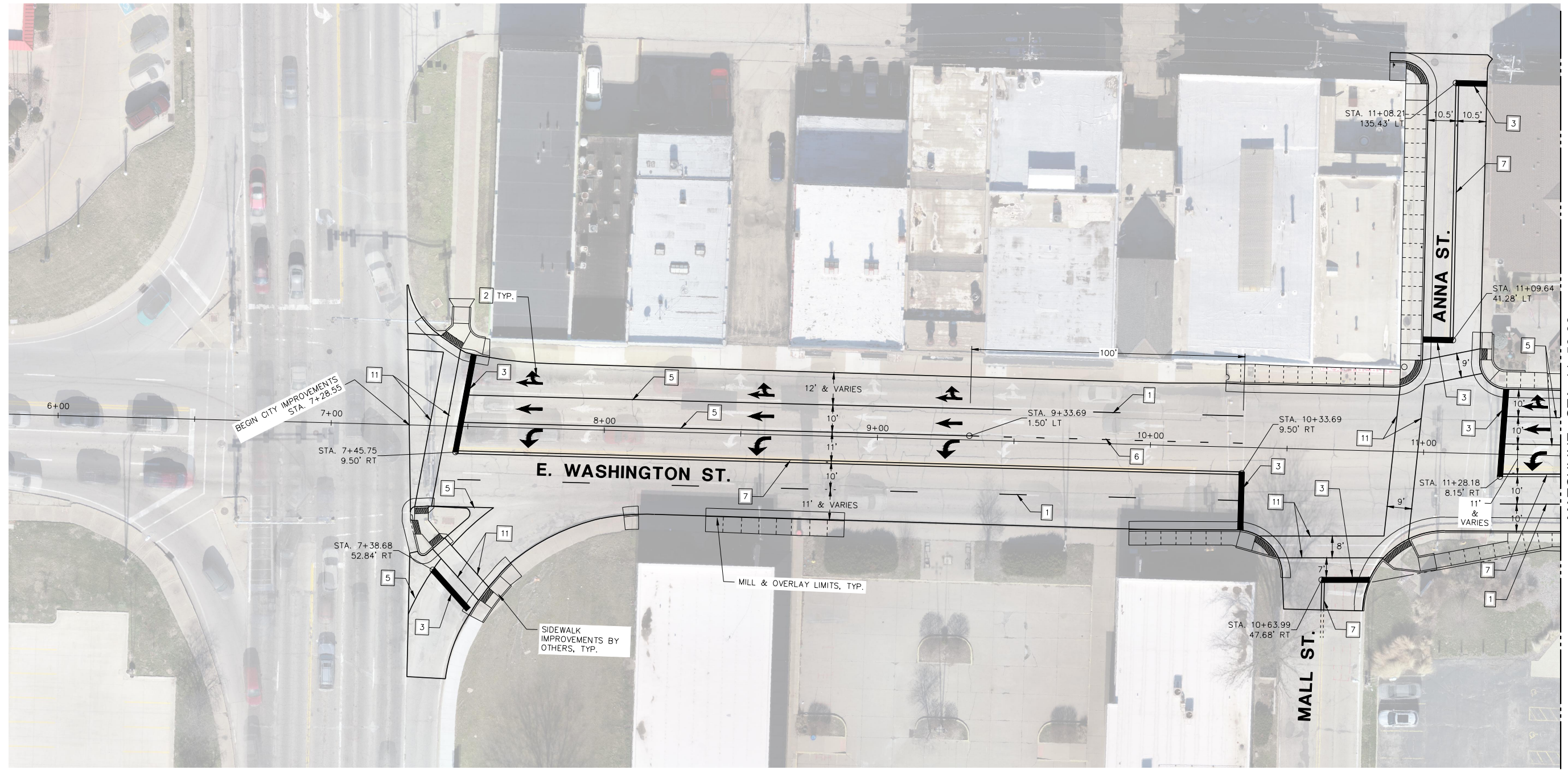
SCALE: 1:20 SHEET 3 OF 5 SHEETS STA. TO STA.

F.A.U. RTE.	SECTION	COUNTY	TOTAL SHEETS	SHEET NO.
6750	20-00172-00-RS	TAZEWELL	22	8
FED. PROJECT NO.		CONTRACT NO. 89803		
ILLINOIS FED. AID PROJECT				

PLAN	SURVEYED	BY	DATE
	PLOTTED		
	GRADES CHECKED		
	ALIGNMENT CHECKED		
	STRUCTURE NOTATIONS CHECKED		
	NOTE BOOK NO.		
	CADD FILE NAME		

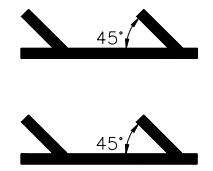
PROFILE	SURVEYED	BY	DATE
	PLOTTED		
	GRADES CHECKED		
	ALIGNMENT CHECKED		
	STRUCTURE NOTATIONS CHECKED		
	NOTE BOOK NO.		
	CADD FILE NAME		

S:\Engineering\Projects\East Peoria\20230048 East Peoria\403 Plans\PLAN AND PROFILE 4LANE.dwg



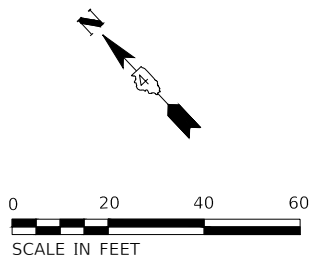
LEGEND - PAVEMENT MARKING

- | | | |
|--------------------------------------|--------|-----------------------|
| 1 LANE SKIP DASH, WHITE 6" | 2 TYP. | 7 DOUBLE YELLOW, 4" |
| 2 LETTERS AND SYMBOLS, WHITE (SMALL) | 3 | 8 DIAGONAL YELLOW 12" |
| 3 SOLID WHITE, 24" | 4 | 9 SOLID YELLOW, 4" |
| 4 SOLID WHITE, 4" | 5 | 10 DIAGONAL WHITE 12" |
| 5 SOLID WHITE, 8" | 6 | 11 SOLID WHITE, 6" |
| 6 LANE SKIP DASH, WHITE 8" | | |



NOTES

1. ALL PAVEMENT MARKING SHALL BE MODIFIED URETHANE WITH GROOVING, SIZE SMALL.
2. SEE DISTRICT STANDARD 780001 FOR ARROW SPACING AND LOCATION.
3. ALL STOP BARS SHALL BE 4' FROM CROSSWALK UNLESS OTHERWISE NOTED.
4. DIMENSIONS ARE TO/FROM FACE OF CURB OR CENTER OF PAVEMENT MARKING EXCEPT FOR STOP BARS WHICH ARE TO EDGE OF PAVEMENT MARKING.
5. ALL CROSSWALKS SHALL BE 6' WIDE UNLESS OTHERWISE NOTED.



MW
Midwest Engineering
Associates, Inc.

140 E. Washington Street
East Peoria, Illinois 61611
309.689.8085

USER NAME = Courtney Allyn	DESIGNED - CSA	REVISED -
PROJECT # = 20230048	DRAWN - EGW FUH	REVISED -
PLOT SCALE = 1:2	CHECKED - RDC	REVISED -
PLOT DATE = 12/18/2023	DATE = 7/2/2024	REVISED -

CITY OF EAST PEORIA

PLAN SHEET

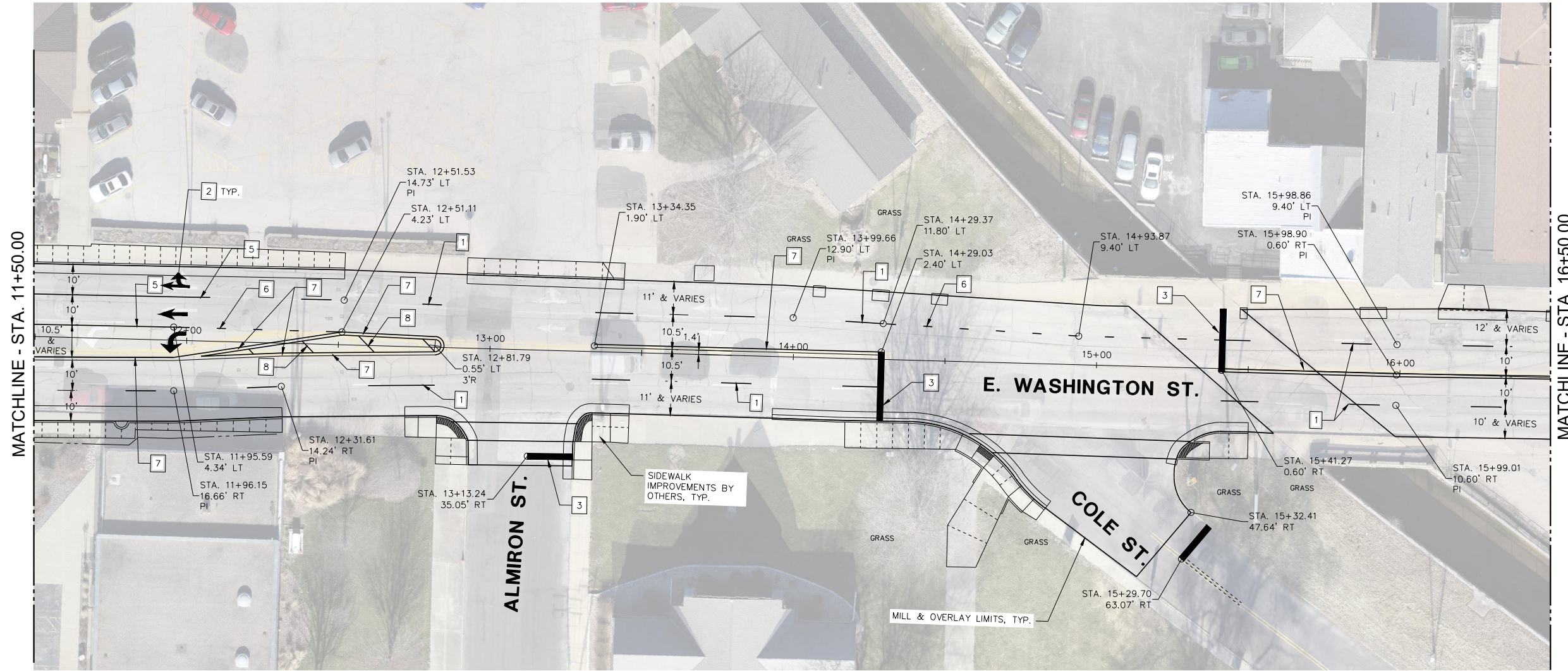
SCALE: 1:20 SHEET 3 OF 5 SHEETS STA. TO STA.

F.A.U. RTE.	SECTION	COUNTY	TOTAL SHEETS	SHEET NO.
6750	20-00172-00-RS	TAZEWELL	22	9
FED. PROJECT NO.		CONTRACT NO. 89803		
ILLINOIS FED. AID PROJECT				

PLAN	SURVEYED	DATE
	PLOTTED	
	GRADES CHECKED	
	ALIGNMENT CHECKED	
	STRUCTURE NOTATIONS CHECKED	
	CADD FILE NAME	
	NO.	

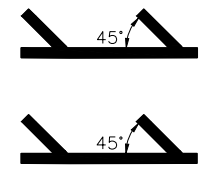
PROFILE	SURVEYED	DATE
	PLOTTED	
	GRADES CHECKED	
	ALIGNMENT CHECKED	
	STRUCTURE NOTATIONS CHECKED	
	CADD FILE NAME	
	NO.	

S:\Engineering\Projects\East Peoria\20230048 East Washington St Resurfacing\400 CAD\403 Plans\PLAN AND PROFILE 4LANE.dwg



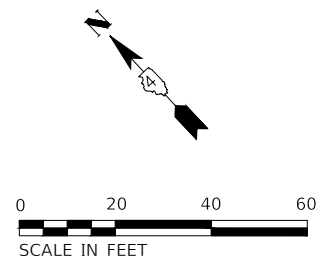
LEGEND - PAVEMENT MARKING

- | | |
|--------------------------------------|-----------------------|
| 1 LANE SKIP DASH, WHITE 6" | 7 DOUBLE YELLOW, 4" |
| 2 LETTERS AND SYMBOLS, WHITE (SMALL) | 8 DIAGONAL YELLOW 12" |
| 3 SOLID WHITE, 24" | 9 SOLID YELLOW, 4" |
| 4 SOLID WHITE, 4" | 10 DIAGONAL WHITE 12" |
| 5 SOLID WHITE, 8" | 11 SOLID WHITE, 6" |
| 6 LANE SKIP DASH, WHITE 8" | |



NOTES

- ALL PAVEMENT MARKING SHALL BE MODIFIED URETHANE WITH GROOVING, SIZE SMALL.
- SEE DISTRICT STANDARD 780001 FOR ARROW SPACING AND LOCATION.
- ALL STOP BARS SHALL BE 4' FROM CROSSWALK UNLESS OTHERWISE NOTED.
- DIMENSIONS ARE TO/FROM FACE OF CURB OR CENTER OF PAVEMENT MARKING EXCEPT FOR STOP BARS WHICH ARE TO EDGE OF PAVEMENT MARKING.
- ALL CROSSWALKS SHALL BE 6' WIDE UNLESS OTHERWISE NOTED.



MW
Midwest Engineering
Associates, Inc.

140 E. Washington Street
East Peoria, Illinois 61611
309.689.8085

IL Design Firm Reg. No.
184-005896

USER NAME = Courtney Allyn	DESIGNED - CSA	REVISED -
PROJECT # = 20230048	DRAWN - EGW FUH	REVISED -
PLOT SCALE = 1:2	CHECKED - RDC	REVISED -
PLOT DATE = 12/18/2023	DATE = 7/2/2024	REVISED -

CITY OF EAST PEORIA

SCALE: 1:20		SHEET 3 OF 5 SHEETS		STA.	TO STA.
-------------	--	---------------------	--	------	---------

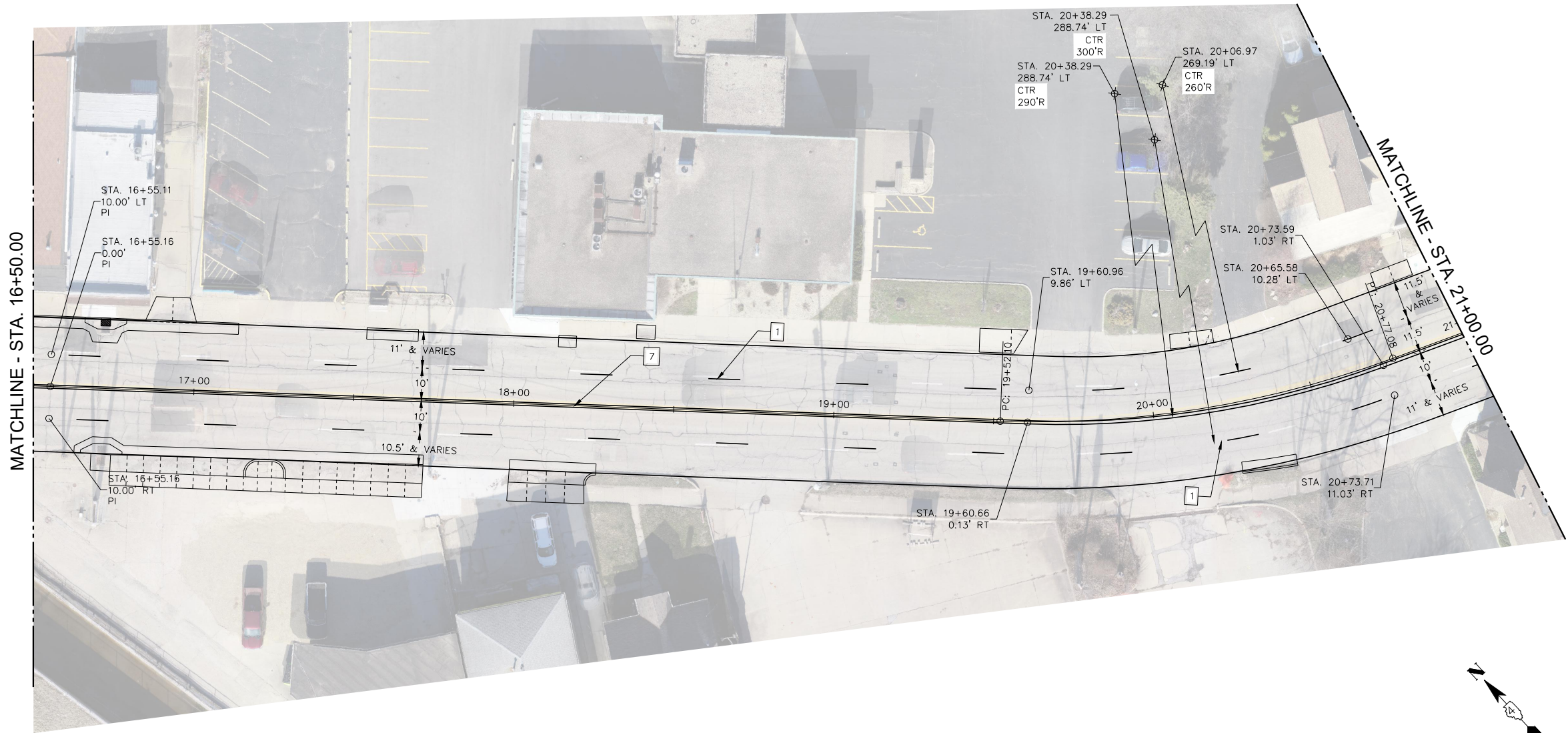
PLAN SHEET

F.A.U. RTE.	SECTION	COUNTY	TOTAL SHEETS	SHEET NO.
6750	20-00172-00-RS	TAZEWELL	22	10
FED. PROJECT NO.		CONTRACT NO. 89803		
ILLINOIS FED. AID PROJECT				

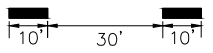
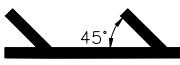

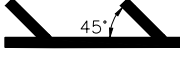
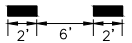
PLAN	SURVEYED	DATE
NOTE BOOK	PLOTTED	BY
NO.	ALIGNED	
	CHECKED	
	CAD FILE NAME	

PROFILE	SURVEYED	DATE
NOTE BOOK	PLOTTED	BY
NO.	GRADES CHECKED	
	STRUCTURE NOTATIONS CHECKED	

S:\Engineering\Projects\East Peoria\20230048 East Washington St Resurfacing\400 CAD\403 Plans\PLAN AND PROFILE 4LANE.dwg



LEGEND - PAVEMENT MARKING

- | | |
|--|---|
| 1 LANE SKIP DASH, WHITE 6"  | 7 DOUBLE YELLOW, 4"  |
| 2 LETTERS AND SYMBOLS, WHITE (SMALL) | 8 DIAGONAL YELLOW 12"  |
| 3 SOLID WHITE, 24" | 9 SOLID YELLOW, 4" |
| 4 SOLID WHITE, 4" | 10 DIAGONAL WHITE 12"  |
| 5 SOLID WHITE, 8" | 11 SOLID WHITE, 6" |
| 6 LANE SKIP DASH, WHITE 8"  | |

NOTES

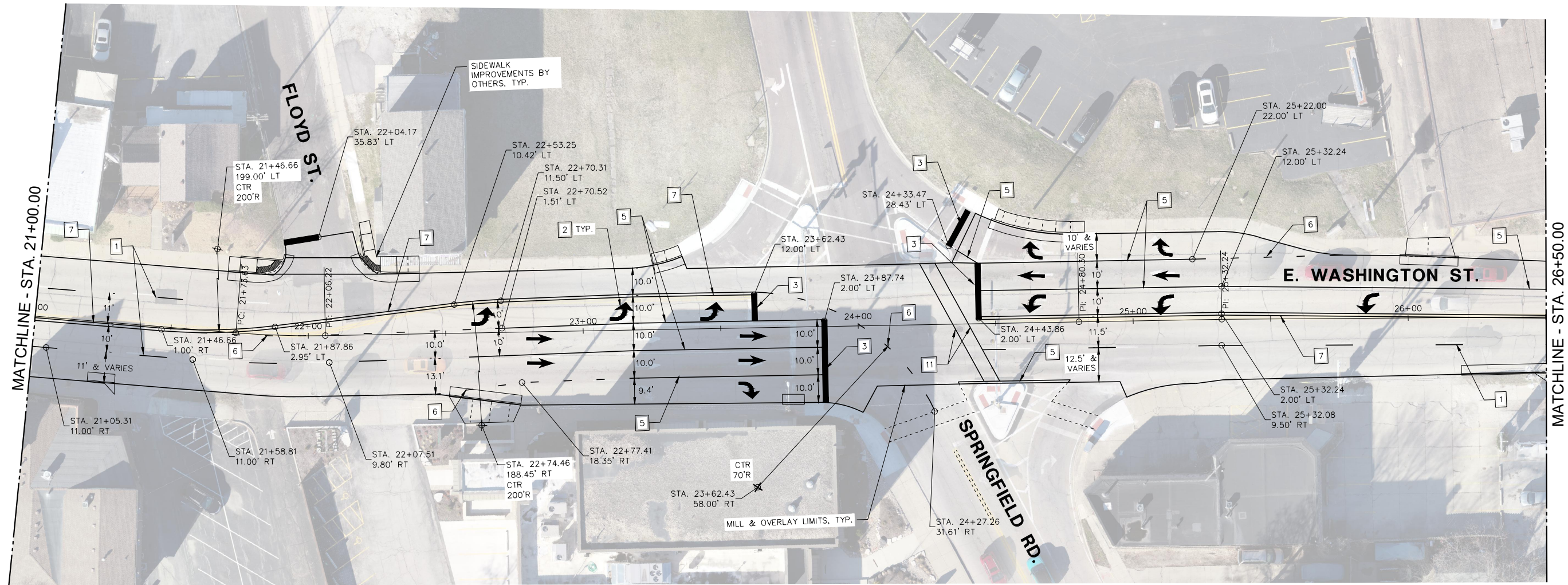
1. ALL PAVEMENT MARKING SHALL BE MODIFIED URETHANE WITH GROOVING, SIZE SMALL.
2. SEE DISTRICT STANDARD 780001 FOR ARROW SPACING AND LOCATION.
3. ALL STOP BARS SHALL BE 4' FROM CROSSWALK UNLESS OTHERWISE NOTED.
4. DIMENSIONS ARE TO/FROM FACE OF CURB OR CENTER OF PAVEMENT MARKING EXCEPT FOR STOP BARS WHICH ARE TO EDGE OF PAVEMENT MARKING.
5. ALL CROSSWALKS SHALL BE 6' WIDE UNLESS OTHERWISE NOTED.



PLAN	SURVEYED	DATE
NOTE BOOK	PLOTTED	BY
NO.	ALIGNMENT	CHECKED
	FILE NAME	NO.
	CAD FILE NAME	

PROFILE	SURVEYED	DATE
NOTE BOOK	PLOTTED	BY
NO.	GRADES	CHECKED
	STRUCTURE	NOTATRS
	CHKO	

S:\Engineering\Projects\East Peoria\20230048 East Washington St Resurfacing\400 CAD\403 Plans\PLAN AND PROFILE 4LANE.dwg

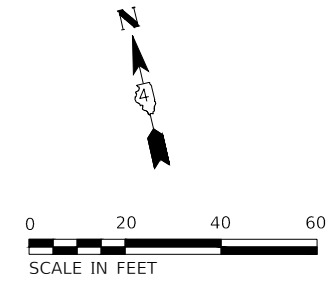


LEGEND - PAVEMENT MARKING

- 1 LANE SKIP DASH, WHITE 6"
- 2 LETTERS AND SYMBOLS, WHITE (SMALL)
- 3 SOLID WHITE, 24"
- 4 SOLID WHITE, 4"
- 5 SOLID WHITE, 8"
- 6 LANE SKIP DASH, WHITE 8"
- 7 DOUBLE YELLOW, 4"
- 8 DIAGONAL YELLOW 12"
- 9 SOLID YELLOW, 4"
- 10 DIAGONAL WHITE 12"
- 11 SOLID WHITE, 6"

NOTES

1. ALL PAVEMENT MARKING SHALL BE MODIFIED URETHANE WITH GROOVING, SIZE SMALL.
2. SEE DISTRICT STANDARD 780001 FOR ARROW SPACING AND LOCATION.
3. ALL STOP BARS SHALL BE 4' FROM CROSSWALK UNLESS OTHERWISE NOTED.
4. DIMENSIONS ARE TO/FROM FACE OF CURB OR CENTER OF PAVEMENT MARKING EXCEPT FOR STOP BARS WHICH ARE TO EDGE OF PAVEMENT MARKING.
5. ALL CROSSWALKS SHALL BE 6' WIDE UNLESS OTHERWISE NOTED.



MW
Midwest Engineering
Associates, Inc.

140 E. Washington Street
East Peoria, Illinois 61611
309.689.8085
IL Design Firm Reg. No.
184-005896

USER NAME = Courtney Allyn
PROJECT # = 20230048
PLOT SCALE = 1:2
PLOT DATE = 12/18/2023

DESIGNED - CSA
DRAWN - EGW FUH
CHECKED - RDC
DATE - 7/2/2024

REVISED -
REVISED -
REVISED -
REVISED -

CITY OF EAST PEORIA

PLAN SHEET

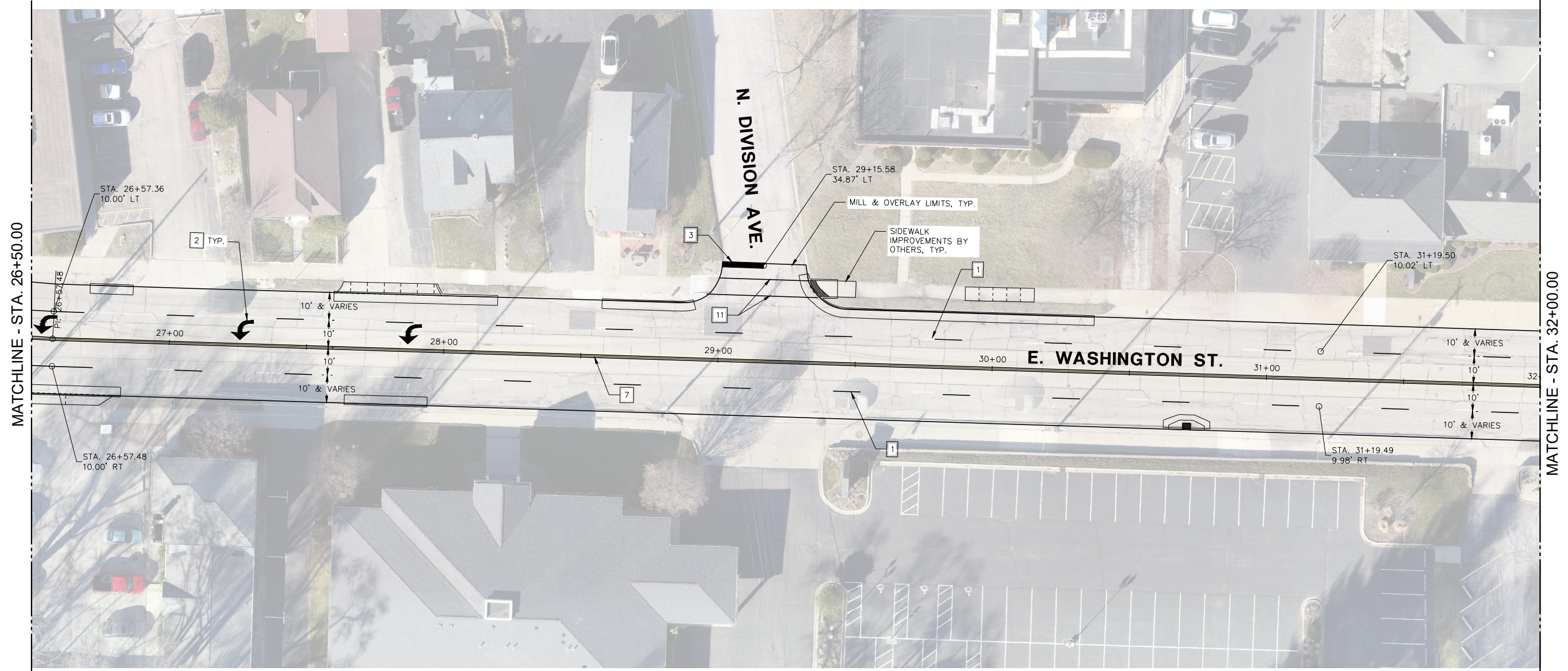
SCALE: 1:20 SHEET 3 OF 5 SHEETS STA. TO STA.

F.A.U. RTE.	SECTION	COUNTY	TOTAL SHEETS	SHEET NO.
6750	20-00172-00-RS	TAZEWELL	22	12
FED. PROJECT NO.		CONTRACT NO. 89803		
ILLINOIS FED. AID PROJECT				

PLAN	SURVEYED	DATE
NOTE BOOK	ALIGNED	
NO.	CHECKED	
	CAD FILE NAME	

PROFILE	SURVEYED	DATE
NOTE BOOK	GRADES CHECKED	
NO.	STRUCTURE NOTATIONS CHECKED	

S:\Engineering\Projects\East Peoria\20230048 East Washington St Resurfacing\400 CAD\403 Plans\PLAN AND PROFILE 4LANE.dwg

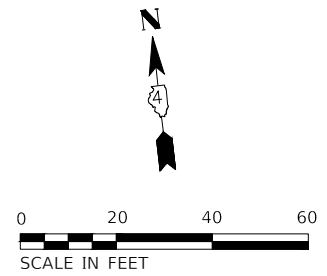


LEGEND - PAVEMENT MARKING

- 1 LANE SKIP DASH, WHITE 6"
- 2 LETTERS AND SYMBOLS, WHITE (SMALL)
- 3 SOLID WHITE, 24"
- 4 SOLID WHITE, 4"
- 5 SOLID WHITE, 8"
- 6 LANE SKIP DASH, WHITE 8"
- 7 DOUBLE YELLOW, 4"
- 8 DIAGONAL YELLOW 12"
- 9 SOLID YELLOW, 4"
- 10 DIAGONAL WHITE 12"
- 11 SOLID WHITE, 6"

NOTES

1. ALL PAVEMENT MARKING SHALL BE MODIFIED URETHANE WITH GROOVING, SIZE SMALL.
2. SEE DISTRICT STANDARD 780001 FOR ARROW SPACING AND LOCATION.
3. ALL STOP BARS SHALL BE 4' FROM CROSSWALK UNLESS OTHERWISE NOTED.
4. DIMENSIONS ARE TO/FROM FACE OF CURB OR CENTER OF PAVEMENT MARKING EXCEPT FOR STOP BARS WHICH ARE TO EDGE OF PAVEMENT MARKING.
5. ALL CROSSWALKS SHALL BE 6' WIDE UNLESS OTHERWISE NOTED.



MW
Midwest Engineering
Associates, Inc.

140 E. Washington Street
East Peoria, Illinois 61611
309.689.8085

USER NAME = Courtney Allyn	DESIGNED - CSA	REVISED -
PROJECT # = 20230048	DRAWN - EGW FUH	REVISED -
PLOT SCALE = 1:2	CHECKED - RDC	REVISED -
PLOT DATE = 12/18/2023	DATE = 7/2/2024	REVISED -

CITY OF EAST PEORIA

PLAN SHEET

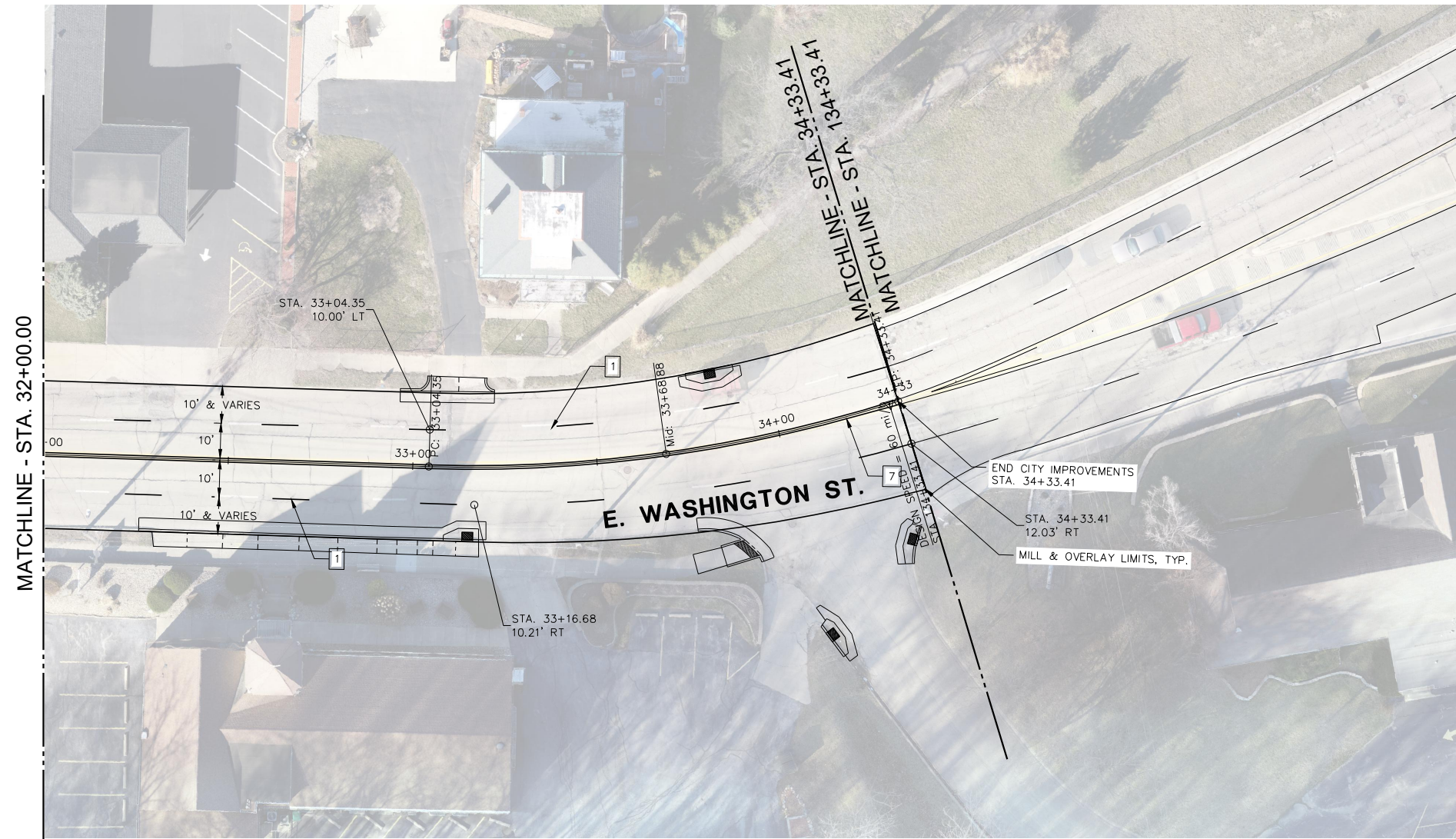
SCALE: 1:20 SHEET 3 OF 5 SHEETS STA. TO STA.

F.A.U. RTE.	SECTION	COUNTY	TOTAL SHEETS	SHEET NO.
6750	20-00172-00-RS	TAZEWELL	22	13
FED. PROJECT NO.		CONTRACT NO. 89803		
ILLINOIS FED. AID PROJECT				

PLAN	SURVEYED	DATE
	PLOTTED	
	GRADES CHECKED	
	ALIGNMENT CHECKED	
	STRUCTURE NOTATIONS CHECKED	
	FILE NAME	
	NO.	

PROFILE	SURVEYED	DATE
	PLOTTED	
	GRADES CHECKED	
	ALIGNMENT CHECKED	
	STRUCTURE NOTATIONS CHECKED	
	FILE NAME	
	NO.	

S:\Engineering\Projects\East Peoria\20230048 East Washington St Resurfacing\400 CAD\403 Plans\PLAN AND PROFILE 4LANE.dwg

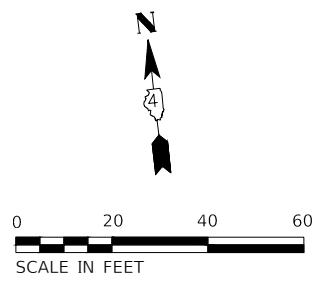


LEGEND - PAVEMENT MARKING

- 1 LANE SKIP DASH, WHITE 6"
- 2 LETTERS AND SYMBOLS, WHITE (SMALL)
- 3 SOLID WHITE, 24"
- 4 SOLID WHITE, 4"
- 5 SOLID WHITE, 8"
- 6 LANE SKIP DASH, WHITE 8"
- 7 DOUBLE YELLOW, 4"
- 8 DIAGONAL YELLOW 12"
- 9 SOLID YELLOW, 4"
- 10 DIAGONAL WHITE 12"
- 11 SOLID WHITE, 6"

NOTES

- ALL PAVEMENT MARKING SHALL BE MODIFIED URETHANE WITH GROOVING, SIZE SMALL.
- SEE DISTRICT STANDARD 780001 FOR ARROW SPACING AND LOCATION.
- ALL STOP BARS SHALL BE 4' FROM CROSSWALK UNLESS OTHERWISE NOTED.
- DIMENSIONS ARE TO/FROM FACE OF CURB OR CENTER OF PAVEMENT MARKING EXCEPT FOR STOP BARS WHICH ARE TO EDGE OF PAVEMENT MARKING.
- ALL CROSSWALKS SHALL BE 6' WIDE UNLESS OTHERWISE NOTED.



MW
Midwest Engineering
Associates, Inc.

140 E. Washington Street
East Peoria, Illinois 61611
309.689.8085
IL Design Firm Reg. No.
184-005896

USER NAME = Courtney Allyn	DESIGNED - CSA	REVISED - -----
PROJECT # = 20230048	DRAWN - EGW FUH	REVISED - -----
PLOT SCALE = 1:2	CHECKED - RDC	REVISED - -----
PLOT DATE = 12/18/2023	DATE - 7/2/2024	REVISED - -----

CITY OF EAST PEORIA

PLAN SHEET

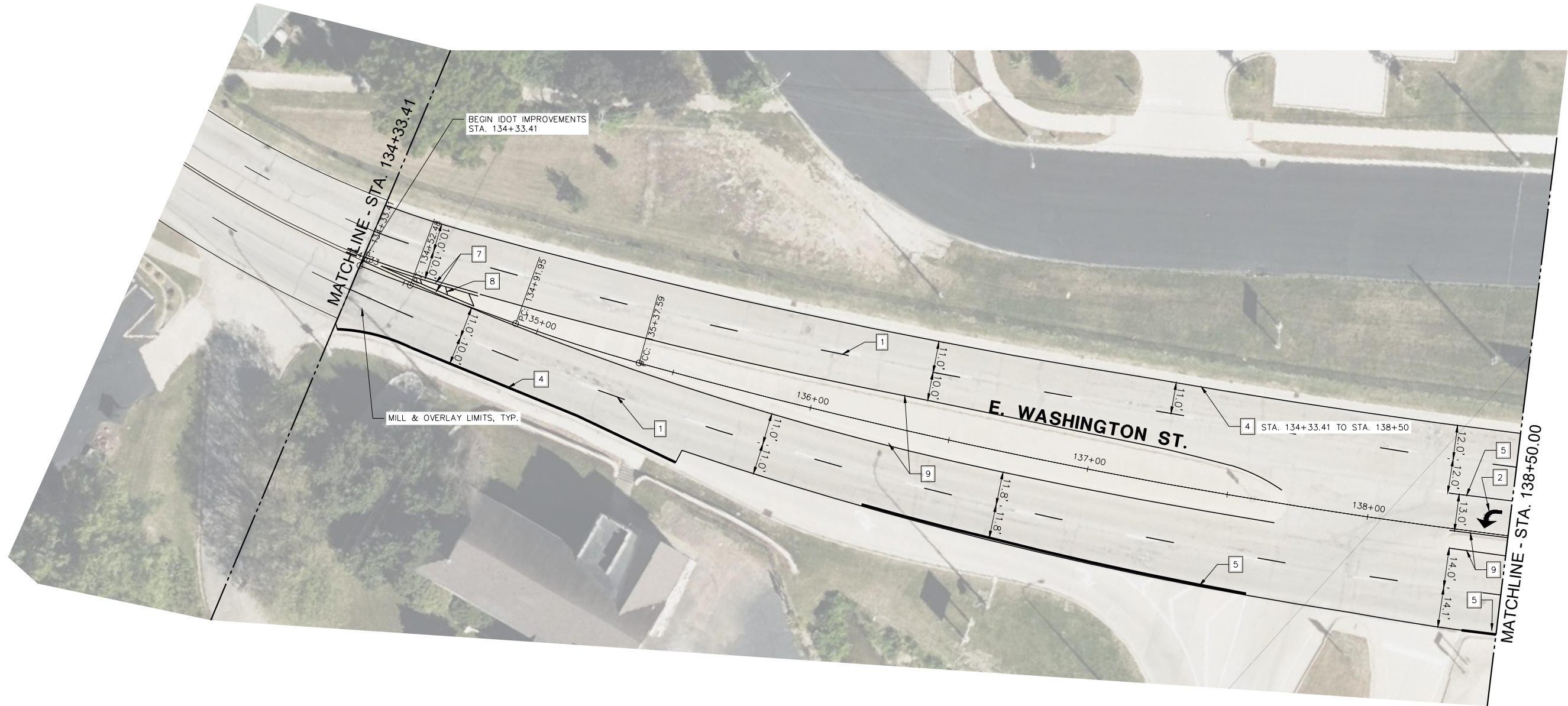
SCALE: 1:20 SHEET 3 OF 5 SHEETS STA. TO STA.

F.A.U. RTE.	SECTION	COUNTY	TOTAL SHEETS	SHEET NO.
6750	20-00172-00-RS	TAZEWELL	22	14
FED. PROJECT NO.		CONTRACT NO. 89803		
ILLINOIS FED. AID PROJECT				

PLAN	SURVEYED	DATE
NOTE BOOK	PLOTTED	BY
NO.	ALIGNED	
	CHECKED	
	CAD FILE NAME	

PROFILE	SURVEYED	DATE
NOTE BOOK	PLOTTED	BY
NO.	GRADES CHECKED	
	STRUCTURE NOTATIONS CHECKED	

S:\Engineering\Projects\East Peoria\20230048 East Washington St Resurfacing\400 CAD\403 Plans\PLAN AND PROFILE\4LANE - IDOT.dwg



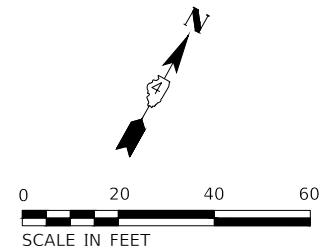
LEGEND - PAVEMENT MARKING

- 1 LANE SKIP DASH, WHITE 6"
- 2 LETTERS AND SYMBOLS, WHITE (SMALL)
- 3 SOLID WHITE, 24"
- 4 SOLID WHITE, 4"
- 5 SOLID WHITE, 8"
- 6 LANE SKIP DASH, WHITE 8"

- 7 DOUBLE YELLOW, 4"
- 8 DIAGONAL YELLOW 12"
- 9 SOLID YELLOW, 4"
- 10 DIAGONAL WHITE 12"
- 11 SOLID WHITE, 6"

NOTES

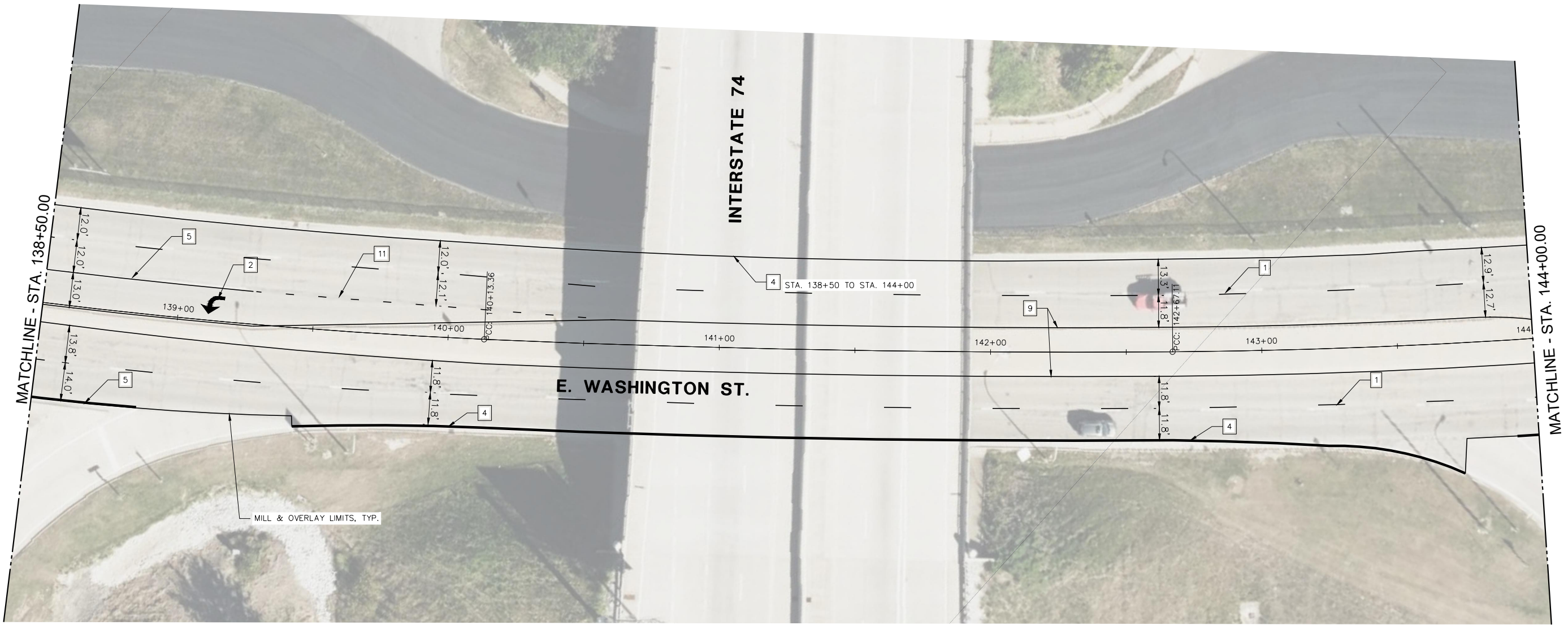
- ALL PAVEMENT MARKING SHALL BE MODIFIED URETHANE WITH GROOVING, SIZE SMALL.
- SEE DISTRICT STANDARD 780001 FOR ARROW SPACING AND LOCATION.
- ALL STOP BARS SHALL BE 4' FROM CROSSWALK UNLESS OTHERWISE NOTED.
- DIMENSIONS ARE TO/FROM FACE OF CURB OR CENTER OF PAVEMENT MARKING EXCEPT FOR STOP BARS WHICH ARE TO EDGE OF PAVEMENT MARKING.
- ALL CROSSWALKS SHALL BE 6' WIDE UNLESS OTHERWISE NOTED.



PLAN	SURVEYED	BY	DATE
	PLOTTED		
	GRADES CHECKED		
	ALIGNMENT CHECKED		
	STRUCTURE NOTATIONS CHECKED		
	NO. _____		
	CADD FILE NAME		

PROFILE	SURVEYED	BY	DATE
	PLOTTED		
	GRADES CHECKED		
	ALIGNMENT CHECKED		
	STRUCTURE NOTATIONS CHECKED		
	NO. _____		
	CADD FILE NAME		

S:\Engineering\Projects\East Peoria\20230048 East Washington St. Resurfacing\400 CAD\403 Plans\PLAN AND PROFILE 4LANE -- IDOT.dwg



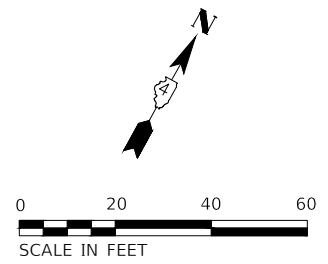
LEGEND - PAVEMENT MARKING

- 1 LANE SKIP DASH, WHITE 6"
- 2 LETTERS AND SYMBOLS, WHITE (SMALL)
- 3 SOLID WHITE, 24"
- 4 SOLID WHITE, 4"
- 5 SOLID WHITE, 8"
- 6 LANE SKIP DASH, WHITE 8"

- 7 DOUBLE YELLOW, 4"
- 8 DIAGONAL YELLOW 12"
- 9 SOLID YELLOW, 4"
- 10 DIAGONAL WHITE 12"
- 11 SOLID WHITE, 6"

NOTES

1. ALL PAVEMENT MARKING SHALL BE MODIFIED URETHANE WITH GROOVING, SIZE SMALL.
2. SEE DISTRICT STANDARD 780001 FOR ARROW SPACING AND LOCATION.
3. ALL STOP BARS SHALL BE 4' FROM CROSSWALK UNLESS OTHERWISE NOTED.
4. DIMENSIONS ARE TO/FROM FACE OF CURB OR CENTER OF PAVEMENT MARKING EXCEPT FOR STOP BARS WHICH ARE TO EDGE OF PAVEMENT MARKING.
5. ALL CROSSWALKS SHALL BE 6' WIDE UNLESS OTHERWISE NOTED.



MW
Midwest Engineering
Associates, Inc.

140 E. Washington Street
East Peoria, Illinois 61611
309.689.8085

USER NAME = Courtney Allyn	DESIGNED - CSA	REVISED -
PROJECT # = 20230048	DRAWN - EGW FUH	REVISED -
PLOT SCALE = 1:2	CHECKED - RDC	REVISED -
PLOT DATE = 12/18/2023	DATE = 7/2/2024	REVISED -

CITY OF EAST PEORIA

PLAN SHEET

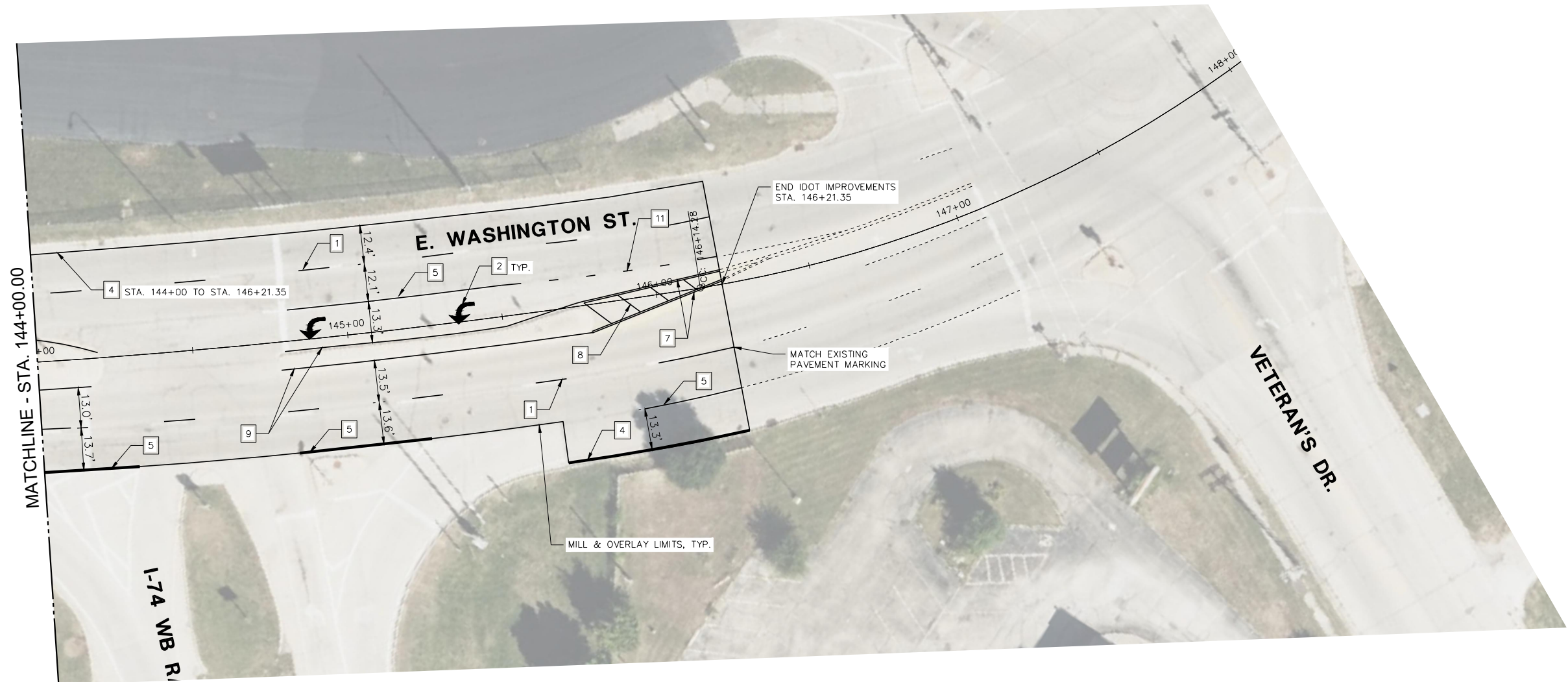
SCALE: 1:20 SHEET 3 OF 5 SHEETS STA. TO STA.

F.A.U. RTE.	SECTION	COUNTY	TOTAL SHEETS	SHEET NO.
6750	20-00172-00-RS	TAZEWELL	22	16
FED. PROJECT NO.		CONTRACT NO. 89803		
ILLINOIS FED. AID PROJECT				

PLAN	SURVEYED	DATE
NOTE BOOK	ALIGNED	
NO.	CHECKED	
	FILE NAME	

PROFILE	SURVEYED	DATE
NOTE BOOK	GRADES CHECKED	
NO.	STRUCTURE NOTATIONS CHECKED	

S:\Engineering\Projects\East Peoria\20230048 East Washington St Resurfacing\400 CAD\403 Plans\PLAN AND PROFILE 4LANE - IDOT.dwg

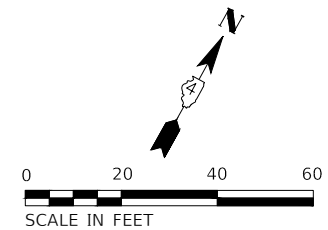


LEGEND - PAVEMENT MARKING

- 1 LANE SKIP DASH, WHITE 6"
- 2 LETTERS AND SYMBOLS, WHITE (SMALL)
- 3 SOLID WHITE, 24"
- 4 SOLID WHITE, 4"
- 5 SOLID WHITE, 8"
- 6 LANE SKIP DASH, WHITE 8"
- 7 DOUBLE YELLOW, 4"
- 8 DIAGONAL YELLOW 12"
- 9 SOLID YELLOW, 4"
- 10 DIAGONAL WHITE 12"
- 11 SOLID WHITE, 6"

NOTES

- ALL PAVEMENT MARKING SHALL BE MODIFIED URETHANE WITH GROOVING, SIZE SMALL.
- SEE DISTRICT STANDARD 780001 FOR ARROW SPACING AND LOCATION.
- ALL STOP BARS SHALL BE 4' FROM CROSSWALK UNLESS OTHERWISE NOTED.
- DIMENSIONS ARE TO/FROM FACE OF CURB OR CENTER OF PAVEMENT MARKING EXCEPT FOR STOP BARS WHICH ARE TO EDGE OF PAVEMENT MARKING.
- ALL CROSSWALKS SHALL BE 6' WIDE UNLESS OTHERWISE NOTED.



MW
Midwest Engineering
Associates, Inc.

140 E. Washington Street
East Peoria, Illinois 61611
309.689.8085
IL Design Firm Reg. No.
184-005896

USER NAME = Courtney Allyn
PROJECT # = 20230048
PLOT SCALE = 1:2
PLOT DATE = 12/18/2023

DESIGNED - CSA
DRAWN - EGW FUH
CHECKED - RDC
DATE - 7/2/2024

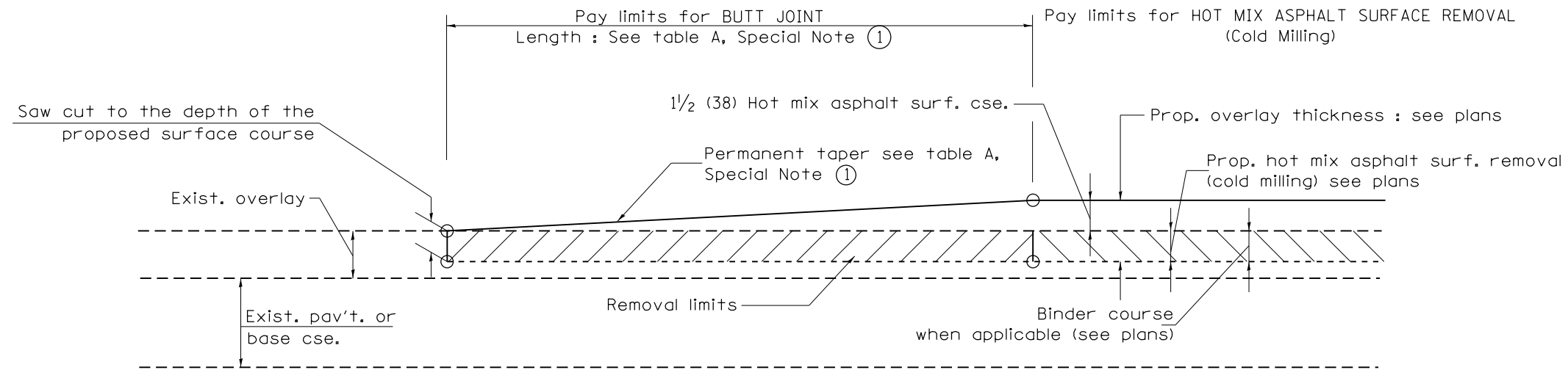
REVISED - -----
REVISED - -----
REVISED - -----
REVISED - -----

CITY OF EAST PEORIA

PLAN SHEET

SCALE: 1:20 SHEET 3 OF 5 SHEETS STA. TO STA.

F.A.U. RTE.	SECTION	COUNTY	TOTAL SHEETS	SHEET NO.
6750	20-00172-00-RS	TAZEWELL	22	17
FED. PROJECT NO.		CONTRACT NO. 89803		
ILLINOIS FED. AID PROJECT				



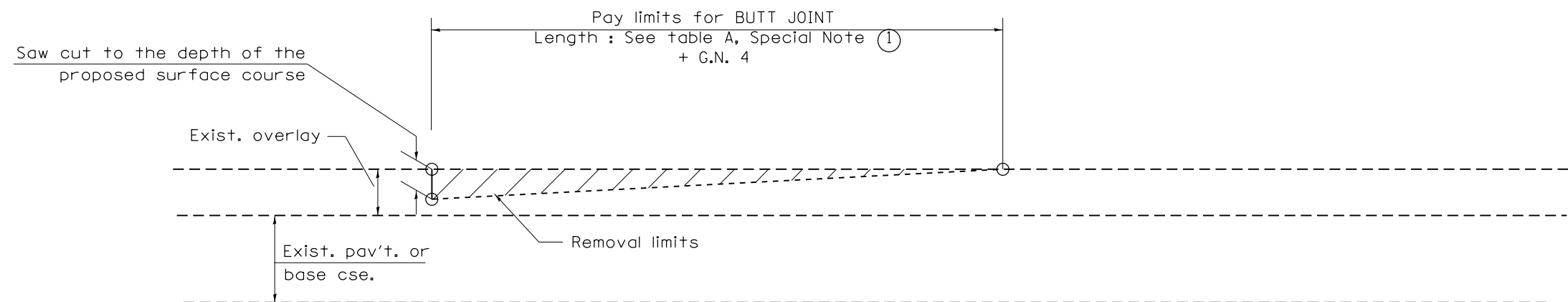
CASE 1 : WITH HOT MIX ASPHALT SURFACE REMOVAL (COLD MILLING)

**TABLE A
TAPER RATES**

SPECIAL NOTE NUMBER	ELEMENT	MAINLINE INTERSTATES & 4-LANE EXPRESSWAYS	ALL OTHERS
①	BUTT JOINT TAPER RATE	1:480	1:240
②	TEMPORARY RAMP TAPER RATE	1:80	1:40

GENERAL NOTES

1. The work shall be done in accordance with Article 406.08 and the Special Provision for Butt Joints.
2. The pavement surface to be removed may be either bituminous or P.C. concrete. The work shall be performed in accordance with Article 440.04 and the Special Provisions for Butt Joints.
3. The saw cut joints shall be primed just prior to the placing of bituminous material. The work will be in accordance with the applicable portions of Article 406.05.
4. The length of butt joint is based on the taper rate times change in cold milling depth within the butt joint pay limits, unless otherwise indicated.
5. Temporary ramps are paid for separately and not included in the cost of the butt joints.



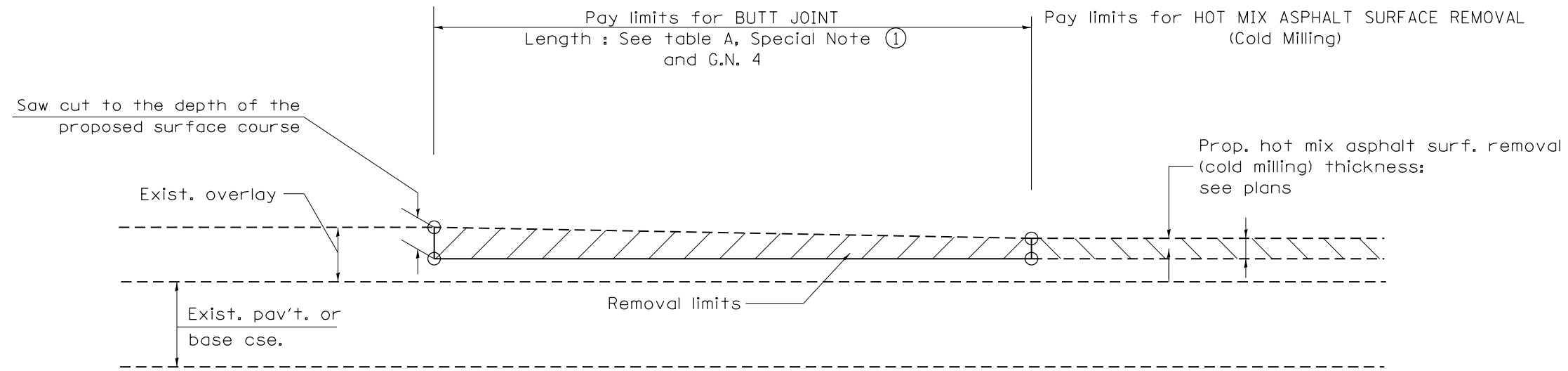
CASE 2 : NO HOT MIX ASPHALT SURFACE REMOVAL (COLD MILLING)

All dimensions are in inches (millimeters) unless otherwise noted.

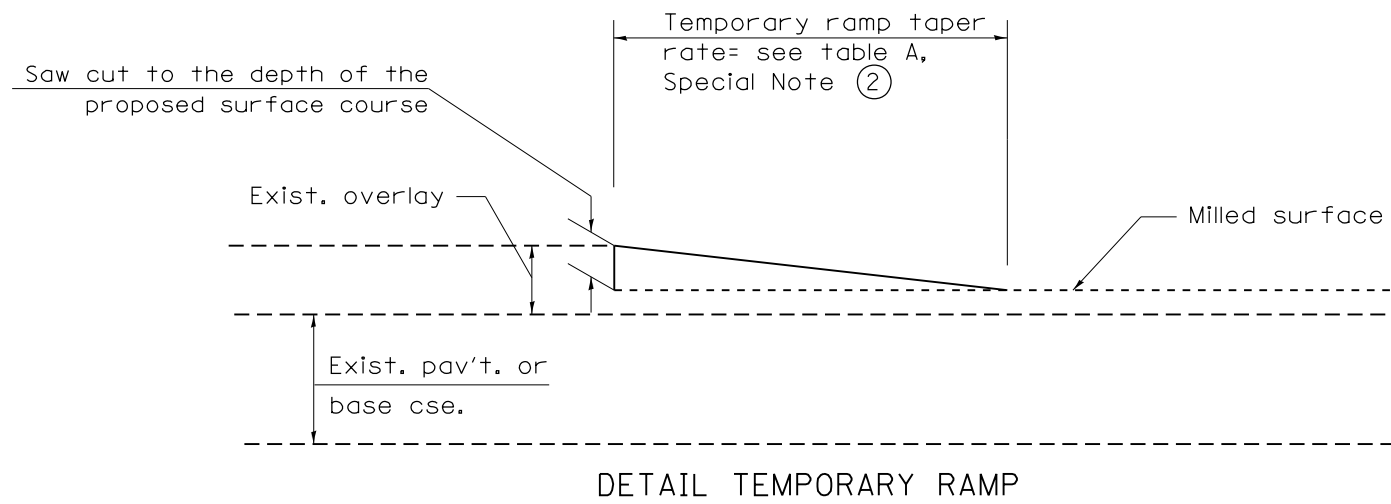
01-01-97	RENUM. C-23.01, NEW REVISION BOX	T.P.	08-21-13	MAJOR MODIFICATIONS	R.D.	STATE OF ILLINOIS DEPARTMENT OF TRANSPORTATION	BUTT JOINTS	F.A. RTE.	SECTION	COUNTY	TOTAL SHEETS	SHEET NO.	
04-01-97	CORRECTION TO DEPTH	J.A.	04-12-16	MINOR CORRECTIONS	R.D.			6750	20-00172-00-RS	TAZWELL	22	18	
09-15-05	REVISED DESIGNER NOTE	M.M.A.	02-14-17	ADDED NOTE 5	R.D.			CONTRACT NO. 89803					
10-16-06	REVISED TO 2007 SPEC.	M.A.	07-16-19	Wording and Spelling corrections	R.D.			SHT. 1 OF 3 CADD STD. 406101-D4					

NOT TO SCALE

FED. ROAD DIST. NO. ILLINOIS FED. AID PROJECT



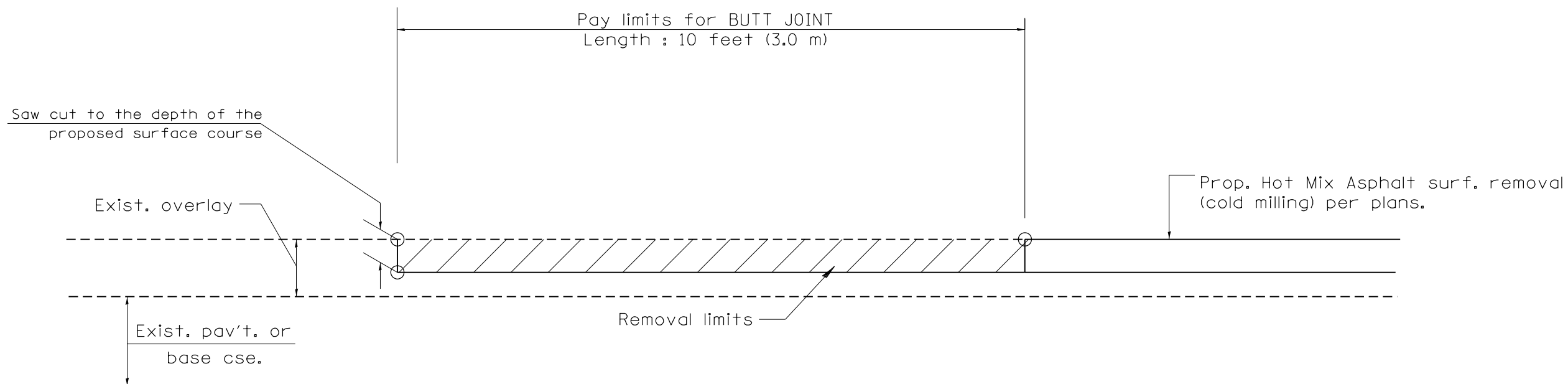
CASE 3 : HOT MIX ASPHALT SURFACE REMOVAL (COLD MILLING)
TIE-IN TO EXISTING BITUMINOUS TAPER



All dimensions are in inches (millimeters) unless otherwise noted.

				STATE OF ILLINOIS DEPARTMENT OF TRANSPORTATION		BUTT JOINTS		SHT. 2 OF 3 CADD STD. 406101-D4	
F.A. RTE.	SECTION	COUNTY	TOTAL SHEETS	SHEET NO.					
6750	20-00172-00-RS	TAZWELL	22	19					
				CONTRACT NO. 89803					
FED. ROAD DIST. NO.		ILLINOIS FED. AID PROJECT							

NOT TO SCALE



CASE 4 : SINGLE LIFT OVERLAY WITH EQUIVALENT DEPTH
HOT MIX ASPHALT SURFACE REMOVAL (COLD MILLING)
TIE-IN TO EXISTING BITUMINOUS TAPER

All dimensions are in inches (millimeters) unless otherwise noted.

**STATE OF ILLINOIS
DEPARTMENT OF TRANSPORTATION**

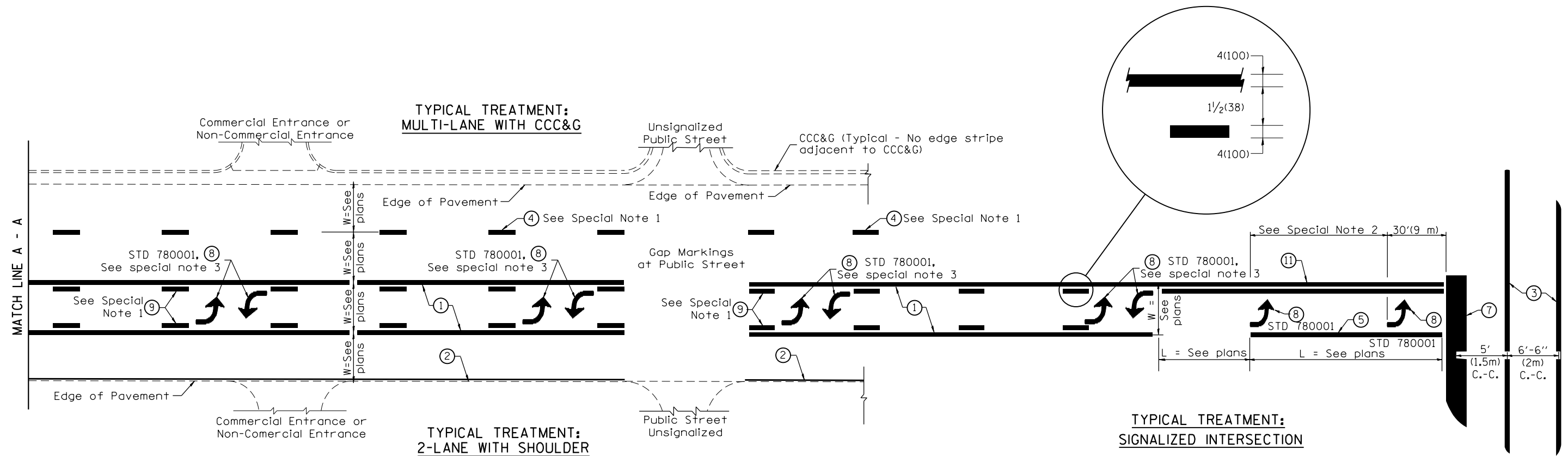
NOT TO SCALE

BUTT JOINTS

SHT. 3 OF 3
CADD STD. 406101-D4

F.A. RTE.	SECTION	COUNTY	TOTAL SHEETS	SHEET NO.
675020-00172-00-RS		TAZWELL	22	20
FED. ROAD DIST. NO.			ILLINOIS FED. AID PROJECT	
			CONTRACT NO. 89803	

DESIGNER NOTES:
1. Include State Standard 780001 (Typical Pavement Markings)



FLUSH PAVED MEDIAN: TWO-WAY LEFT TURN LANE WITH ONE-WAY LEFT TURN LANE AT SIGNALIZED INTERSECTION

TYPICAL PAVEMENT MARKING LEGEND

(Note: This is a District Standard Legend. Some elements may not apply to specific project.)

- ① 4(100) Solid (Yellow)
- ② 4(100) Solid (White)
- ③ 2-6(150) Crosswalk @ 6'-6" (2m)min C.-C. (White)
2-8(200) Crosswalk @ 6'-6" (2m)min C.-C. (White) (When traffic signals are present.)
- ④ 6(150) Skip-Dash (White) (See Special Note 1)
- ⑤ 8(200) Solid (White)
- ⑥ 12(300) Diagonal (White) (Item ⑥ is shown on Std. 780001)
- ⑦ 24(600) Stop Bar (White)
- ⑧ Letters & Arrows (See Std. 780001 and Special Notes 2 & 3)
- ⑨ 4(100) Skip-Dash (Yellow) (See Special Note 1)
- ⑩ 12(300) Diagonal (Yellow) (See Table A) (See Table A)
- ⑪ 4(100) Double Solid (Yellow) (See Table A)

SPECIAL NOTES

- Skip-Dash markings will be centered between both ends of city blocks and shall be placed in alignment transversely across the pavement.
- The following shall apply to arrows located in one-way left turn lanes:
 - A minimum of two (2) arrows is required.
 - The maximum spacing between arrows is 80' (24 m).
 - Arrows shall be evenly spaced if three (3) or more are required.
- The following shall apply to arrow pairs located in two-way left turn lanes:
 - A minimum of two (2) arrow pairs is required.
 - The maximum spacing between arrow pairs is 200' (61 m).
 - Arrow pairs shall be evenly spaced if three (3) or more are required.
 - The spacing between Bi Directional Left Turn Arrows is 33' (10 m).

GENERAL NOTES

- Refer to State Standard 780001 for additional Pavement Markings including letters & arrows.
- See Plans for Pavement Markings adjacent to curbed islands and medians, and through lane reductions.
- Refer to Article 780.13 for letter, number and symbol areas (sq. ft.)
- Areas are grooved 1" beyond each edge for the following symbols:
Through Arrow= 14.8 sq. ft.
Large Left or Right Arrow= 21.9 sq. ft.
2 Arrow Combination Left (or Right) and Through= 34.9 sq. ft.
Wrong Way Arrow= 29.5 sq. ft.
Railroad Crossing Symbol= 69.8 sq. ft.
(For further information, refer to BDE Special Provision: Grooving for Recessed Pavement Markings)

01-01-97	RENUM. F-8.03, NEW REVISION BOX	T.P.	10-16-06	REVISED TO 2007 SPEC.	
02-07-97	ADD BI DIRECTIONAL DIMENSION	J.A.	2/29/16	ADDED GROOVING AREAS	R.D.
10-97	CORRECT BI DIRECTIONAL DIMENSION	J.A.	07-16-19	SPELLING CORRECTIONS	R.D.
08-02	ADD CROSSWALK DMNS. WITH T.S.	M.A.			

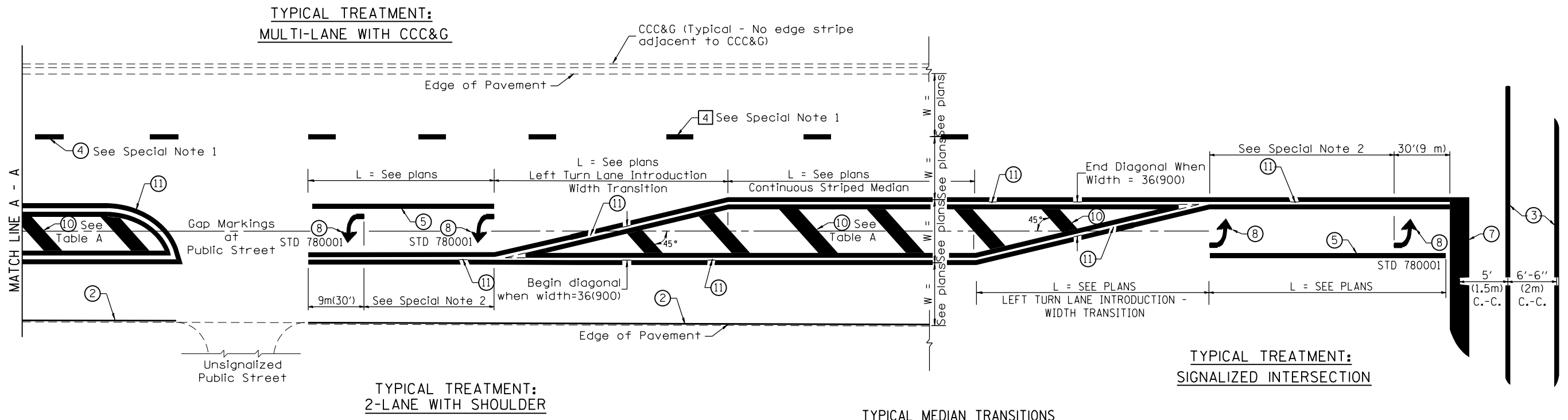
**STATE OF ILLINOIS
DEPARTMENT OF TRANSPORTATION**

NOT TO SCALE

TYPICAL PAVEMENT MARKINGS

SHT. 1 OF 2
CADD STD. 780001-D4

F.A. RTE.	SECTION	COUNTY	TOTAL SHEETS	SHEET NO.
6750	20-00172-00-RS	TAZWELL	22	21
FED. ROAD DIST. NO. ILLINOIS FED. AID PROJECT			CONTRACT NO. 89803	

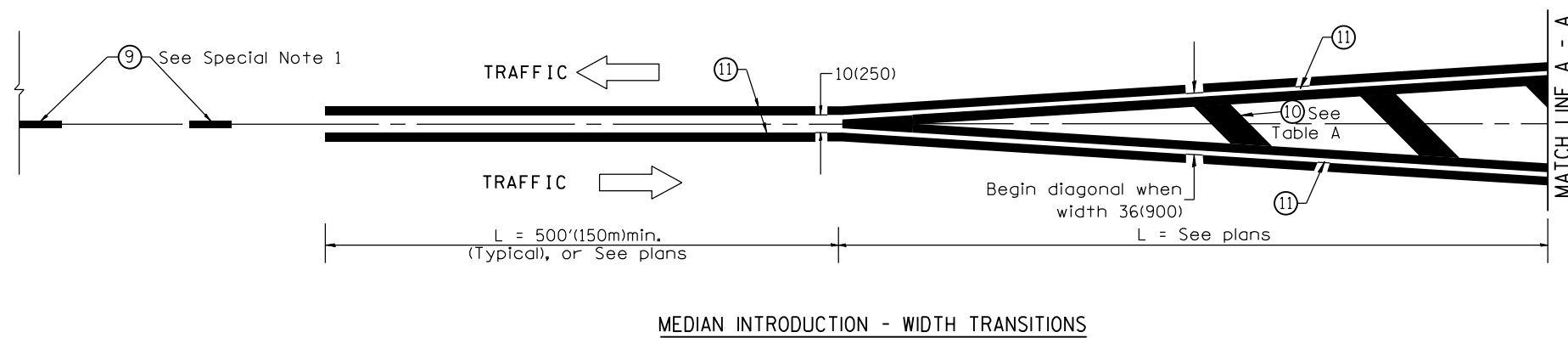


FLUSH PAVED MEDIAN: RESTRICTED LEFT TURN LANE

TABLE A

RECOMMENDED SPACING BETWEEN DIAGONAL LINES

SPEED LIMIT RANGE	INTERSECTION CHANNELIZATION (Includes Width Transitions for Median and Left Turn Lane Introductions)	
	CONTINUOUS	
Less Than 30 mph (50 km/h)	50' (15m)	15' (5m)
30 - 45 mph (50 - 70 km/h)	75' (23m)	20' (6m)
Over 45 mph (70 km/h)	150' (46m)	30' (9m)



All dimensions are in inches (millimeters) unless otherwise noted.