

ROUTE NO.	SECTION	COUNTY	TOTAL SHEETS	SHEET NO.
S.B.I.	19-0068	FAYETTE	25	3
F.A.	00-SW			
FED. ROAD DIST. NO. 7	ILLINOIS	CONTRACT #95911		

SUMMARY OF QUANTITIES			
CITY OF VANDALIA			
SAFE ROUTES TO SCHOOLS			
SECTION #19-00068-00-SW			
ITEM NO.	DESCRIPTION	UNIT	TOTAL QUANTITY
20100110	TREE REMOVAL (6 TO 15 UNITS DIAMETER)	UNITS	6.0
20100210	TREE REMOVAL (OVER 15 UNITS DIAMETER)	UNITS	30.0
20200100	EARTH EXCAVATION	CU YD	604.0
20400800	FURNISHED EXCAVATION	CU YD	217.0
20800150	TRENCH BACKFILL	CU YD	74.0
28000400	PERIMETER EROSION BARRIER	FOOT	5124.0
28000500	INLET AND PIPE PROTECTION	EACH	34.0
28100107	STONE RIPRAP, CLASS A4	SQ YD	48.0
28200200	FILTER FABRIC	SQ YD	48.0
40200800	AGGREGATE SURFACE COURSE, TYPE B	TON	12.0
40800029	BITUMINOUS MATERIALS (TACK COAT)	POUND	13.0
40800050	INCIDENTAL HOT-MIX ASPHALT SURFACING	TON	73.0
42001300	PROTECTIVE COAT	SQ YD	3387.0
42300200	PORTLAND CEMENT CONCRETE DRIVEWAY PAVEMENT, 6 INCH	SQ YD	111.0
42400100	PORTLAND CEMENT CONCRETE SIDEWALK 4 INCH	SQ FT	25403.0
42400300	PORTLAND CEMENT CONCRETE SIDEWALK 6 INCH	SQ FT	4085.0
42400800	DETECTABLE WARNINGS	SQ FT	160.0
44000200	DRIVEWAY PAVEMENT REMOVAL	SQ YD	222.0
44000500	COMBINATION CURB AND GUTTER REMOVAL	FOOT	10.0
50105220	PIPE CULVERT REMOVAL	FOOT	20.0
542C0213	PIPE CULVERTS, CLASS C, TYPE 1 8"	FOOT	75.0

CONTINUED			
ITEM NO.	DESCRIPTION	UNIT	TOTAL QUANTITY
542C0215	PIPE CULVERTS, CLASS C, TYPE 1 10"	FOOT	28.0
542C0220	PIPE CULVERTS, CLASS C, TYPE 1 15"	FOOT	191.0
542A0223	PIPE CULVERTS, CLASS A, TYPE 1 18"	FOOT	70.0
542A0241	PIPE CULVERTS, CLASS A, TYPE 1 36"	FOOT	70.0
56109210	WATER VALVES TO BE ADJUSTED	EACH	1.0
56500300	DOMESTIC METER VAULTS TO BE ADJUSTED	EACH	1.0
60604400	COMBINATION CONCRETE CURB AND GUTTER, TYPE B-6.18	FOOT	10.0
67100100	MOBILIZATION	L SUM	1.0
* 72000100	SIGN PANEL-TYPE 1	SQFT	52.0
72400500	RELOCATE SIGN PANAEL ASSEMBLY-TYPE A	EACH	2.0
* 72800100	TELESCOPING STEEL SIGN SUPPORT	FOOT	90.0
K0026830	SHRUB REMOVAL	EACH	1.0
X0327423	CONNECTION TO EXISTING CULVERT	EACH	2.0
X2500900	SEEDING, CLASS 1 (SPECIAL)	ACRE	0.75
X6026050	SANITARY SEWER MANHOLE TO BE ADJUSTED	EACH	1.0
X7010216	TRAFFIC CONTROL AND PROTECTION, (SPECIAL)	L SUM	1.0
* X8140115	HANDHOLE TO BE ADJUSTED	EACH	2.0
Z0010800	COLD MILLING (LEVELING)	SQ YD	170.0
Z0048665	RAILROAD PROTECTIVE LIABILITY INSURANCE	LSUM	1.0
* Z0048700	RAILROAD TIES	EACH	6.0
XX004633	FIELD TILE ADJUSTMENT	EACH	1.0

* SPECIALTY ITEMS

REVISION ISSUED	DATE	BY
XXX	XXXXXX	XXX
780.788	FIELD BOOK	
CMP/AJR	DRAWN BY	
MAT. AJR. MN	CHECKED BY	
S:\2018\18280 BG4 (VANDALIA)\DWG\TITLE.DWG	FILE LOCATION	
12/5/2022 10:33	SAVE DATE	
MILANO & GRUNLOH ENGINEERS, LLC 114 W. WASHINGTON AVE. PO BOX 887 EFFINGHAM, IL 62401 Phone: (217) 347-7262 (800) 677-2714 Email: mgeengineers@mgeengineers.com Web: www.mgeengineers.com Design Firm # 184-003108		
SUMMARY OF QUANTITIES SAFE ROUTES TO SCHOOL 19-00068-00-SW VANDALIA, ILLINOIS		
SHEET #		
3 OF 25		
JOB #		
18280 BG4		

LOCATION	PAVEMENT							COMBINATION CONCRETE CURB AND GUTTER, TYPE B-6.18
	AGGREGATE SURFACE COURSE, TYPE B	BITUMINOUS MATERIALS (TACK COAT)	INCIDENTAL HOT-MIX ASPHALT SURFACING	PROTECTIVE COAT	PORTLAND CEMENT CONCRETE DRIVEWAY PAVEMENT, 6 INCH	PORTLAND CEMENT CONCRETE SIDEWALK 4 INCH	PORTLAND CEMENT CONCRETE SIDEWALK 6 INCH	
	TON	POUND	TON	SQ YD	SQ YD	SQ FT	SQ FT	
FILLMORE ST	40200800	40800029	40800050	42001300	42300200	42400100	42400300	60604400
10+11.48-12+67.37				141		1268		
10+10.44								10
12+52.41-12+83.36		2	7.0					
12+62.78-13+20.33								
13+13.96-15+00				102		920		
15+00-16+46.87				81		730		
16+46.87-16+58.62				7			62	
16+58.62-18+11.63				86		770		
18+11.63-18+630.20	3			14			124	
18+36.20-18+99.40				35		315		
18+99.40-19+33.94	4			19			170	
19+33.94-20+11.13				44		398		
20+11.13-22+04.51				89		797		
20+12.00-20+47.05		2	6.0					
22+04.51-22+15.79				6			55	
22+15.79-23+08.67				52		465		
23+01.18-23+43.24	3							
23+08.67-23+36.06				15			139	
23+36.06-23+69.31		1	3.0	23		207		
23+69.05-23+80.41				16		145		
23+95.27-24+18.55		2	8.0					
24+11.72-25+00				48		434		
25+00-26+44.45				81		728		
26+38.50-26+80.19				16	16			
26+44.45-26+74.04				16		147		
26+74.16-29+50				153		1375		
29+50-30+01.36				29		261		
30+01.36-30+28.83				0				
30+28.83-31+20				54		484		
31+09.47-31+40.69				35	35			
31+20-31+34.27				9			78	
31+34.27-34+00				148		1334		
34+00-35+48.41				84		757		
35+42.86-35+75.05				28	28			
35+48.41-35+70.42				12			110	
35+70.42-39+00				185		1662		
39+00-39+22.27				13		116		
39+22.28-39+45.38				45	32		116	
39+45.38-40+64				67		603		
40+64-40+76.27				27			240	
40+76.27-44+00				160		1443		
44+00-48+23.91				237		2137		
48+23.91-48+54.92		2	17.0	19			172	
48+54.92-49+00				23		209		
49+00-52+37.28				191		1722		
52+37.28-52+51.33	2			9			85	
52+51.33-53+22.75				39		351		
53+22.75-53+50		2	22.0					
53+49.88-53+67.03				9		84		
53+66.29-54+11.10		2	10.0					
STREET TOTAL	12	13	73	2467	111	19715	1498	10
RAILROAD DR/FLETCHER ST								
60+11.16-65+00				276		2484		
65+00-70+57.20				280		2519		
70+57.20-75+00				249			2237	
75+00-76+29.34				39			350	
76+29.17-76+45				76		685		
STREET TOTAL	0	0	0	920	0	5688	2587	0
TOTAL	12.0	13.0	73.0	3387.0	111.0	25403.0	4085.0	10.0

LOCATION	REMOVALS			
	COMBINATION CURB AND GUTTER REMOVAL	COLD MILLING (LEVELING)	DRIVEWAY PAVEMENT REMOVAL	PIPE CULVERT REMOVAL
	44000500	Z0010800	44000200	50105220
FILLMORE ST	LF	SQ YD	SQ YD	FOOT
10+10.44	10			
12+52.4-13+32.93		105		
26+38.50-26+80.19			36	
31+09.47-31+40.69			44	
35+42.86-35+75.05			40	
39+22.03-39+45.43			44	
40+57.32-40+77.50				20
48+21.10-48+71.91			58	
STREET TOTAL	10	105	222	20
FLETCHER ST				
76+13.63-76+39.67		65		
STREET TOTAL		65		
TOTAL	10.0	170.0	222.0	20.0

SANITARY SEWER MANHOLE TO BE ADJUSTED		
X6026050		
LOCATION	OFFSET	EACH
23+71.22	24' LT	1
TOTALS		1.0

HANDHOLE TO BE ADJUSTED		
X8140115		
LOCATION	OFFSET	EACH
23+65.07	37' LT	1
53+00	25' LT	1
TOTALS		2.0

WATER VALVE TO BE ADJUSTED		
56109210		
LOCATION	OFFSET	EACH
40+65.04	27' LT	1

FIELD TILE ADJUSTMENT		
XX004633		
LOCATION	OFFSET	EACH
36+40	LT	1.0

PERIMETER EROSION BARRIER		
LOCATION	OFFSET	FOOT
28000400		
FILLMORE ST		
10+15.63 TO 12+61.07	RT	245
13+22.98 TO 15+00	RT	177
15+00 TO 16+46.07	RT	146
16+58.74 TO 18+11.86	RT	112
18+36.12 TO 18+99.56	RT	64
19+33.86 TO 20+06.95	RT	73
20+48.09 TO 22+04.22	RT	156
22+17.39 TO 23+08.54	RT	91
23+38.80 TO 23+64.48	RT	26
24+14.38 TO 25+00	LT	86
25+00 TO 26+45.05	LT	145
26+74.15 TO 29+50.00	LT	276
29+50 TO 30+00	LT	50
30+26.11 TO 31+16.00	LT	90
31+36.64 TO 34+00	LT	264
34+00 TO 35+45.78	LT	176
35+72.72 TO 39+00	LT	328
39+00 TO 39+22.34	LT	23
39+45.55 TO 40+63.42	LT	118
40+76.77 TO 44+00	LT	324
44+00 TO 48+23.89	LT	424
48+69.11 TO 49+00	LT	31
49+00 TO 49+65.27	LT	65
49+88.45 TO 52+37.76	LT	250
52+50.97 TO 53+21.46	LT	71
STREET TOTAL		3811
RAILROAD/FLETCHER ST		
60+36.83 TO 65+00	RT	464
65+00 TO 70+00	RT	500
70+00 TO 72+27.77	RT	228
73+41.78 TO 74+09.76	RT	68
76+29.69 TO 76+30.01	LT	53
STREET TOTAL		1313
TOTAL		5124.0

PIPE PROTECTION		
LOCATION	OFFSET	EACH
28000500		
FILLMORE ST		
13+10.31	38' RT	1
13+69.46	20' RT	1
16+37.44	18' RT	1
17+72.50	19' RT	1
18+04.96	19' RT	1
18+96.44	18' RT	1
19+98.59	29' RT	1
19+99.79	43' RT	1
20+56.03	42' RT	1
22+01.69	22' RT	1
22+27.12	22' RT	1
23+56.32	17' LT	1
26+30.01	21' LT	1
29+92.10	27' LT	1
29+94.93	22' LT	2
31+07.02	22' LT	2
35+35.06	31' LT	2
36+79.70	25' LT	1
36+79.74	44' LT	1
38+72.64	45' LT	1
39+69.40	24' LT	1
40+77.71	22' LT	1
48+17.00	23' LT	1
49+77.53	49' LT	2
52+67.45	16' LT	1
STREET TOTAL		29
RAILROAD/FLETCHER ST		
60+32.53	31' RT	1
73+71.90	13' RT	1
76+18.97	11' LT	1
76+36.55	11' LT	1
79+39.14	80' LT	1
STREET TOTAL		5
TOTAL		34.0

DETECTABLE WARNINGS	
LOCATION	DETECTABLE WARNING
FILLMORE ST	42400800
10+14.23	10
12+62.20	10
13+15.68	15
20+07.03	10
20+53.74	10
23+66.83 RT	10
23+66.83 LT	10
23+77.40	10
24+14.35	10
53+21	10
53+50	10
53+65.29	10
54+12.68	15
STREET TOTAL	140
RAILROAD DR / FLETCHER ST	
76+26.84 RT	10
76+26.84 LT	10
STREET TOTAL	20
TOTAL	160.0

SEEDING CLASS 1 (SPECIAL)	
LOCATION	X2500900
	ACRE
10+15.63-54+30	0.50
60+00-76+40.00	0.10
TOTAL	0.60
USE	0.75

DOMESTIC METER VAULTS TO BE ADJUSTED	
LOCATION	EACH
56500300	
18+01.95 RT	1
TOTAL	1

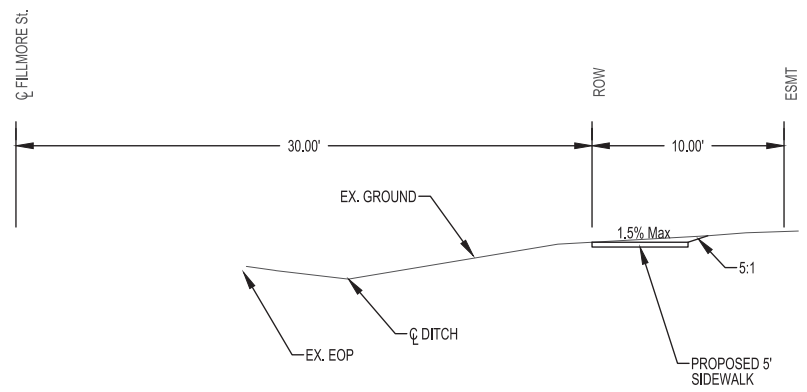
TREE REMOVALS				
LOCATION	OFFSET	TREE REMOVAL (6 TO 15 UNITS DIAMETER)	TREE REMOVAL (OVER 15 UNITS DIAMETER)	SHRUB REMOVAL
		20100110	20100210	K0026830
11+50.00	28' RT	6		
15+71.07	26' RT		30	
16+95.00	31.3' RT			1
TOTALS		6.0	30.0	1.0

RIPRAP		
LOCATION	STONE RIPRAP, CLASS A4	FILTER FABRIC
	SQ YD	SQ YD
28100107		
49+68.48	26	26
49+87.48	22	22
TOTAL	48.0	48.0

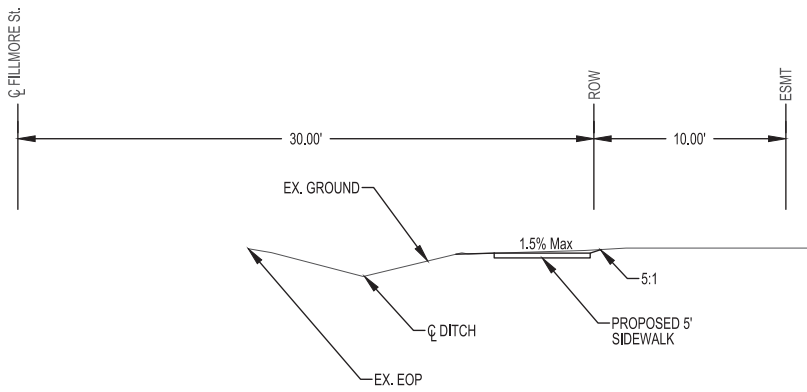
EARTHWORK SCHEDULE					
(1)	(2)	(3)	(4)	(5)	(6)
EARTH EXCAVATION (CUT ONLY)	TOP SOIL STRIPPING TO BE USED OUTSIDE OF EMBANKMENT	TOTAL EARTH EXCAVATION (CUT ONLY) (1)+(2)	EXCAVATION TO BE USED AS EMBANKMENT AND TOPSOIL LAYER (3*0.75)	EMBANKMENT	EARTHWORK BALANCE WASTE (+) OR SHORTAGE (-) ((4)-(5) FURNISHED EXCAVATION)
CUBIC YARD	CUBIC YARD	CUBIC YARD	CUBIC YARD	CUBIC YARDS	CUBIC YARDS
467	137	604	450	667	-217

SIGNAGE				
LOCATION	RELOCATE SIGN PANEL ASSEMBLY - TYPE A	TELESCOPING STEEL SIGN SUPPORT	SIGN PANEL - TYPE 1	SIGN
	72400500	72800100	72000100	
	EACH	FOOT	SQ FT	
23+67.34 LT	1			STEET SIGN
53+62.40 RT	1			"STOP"
23+77.08 (54' LT)		15	11	W11-2

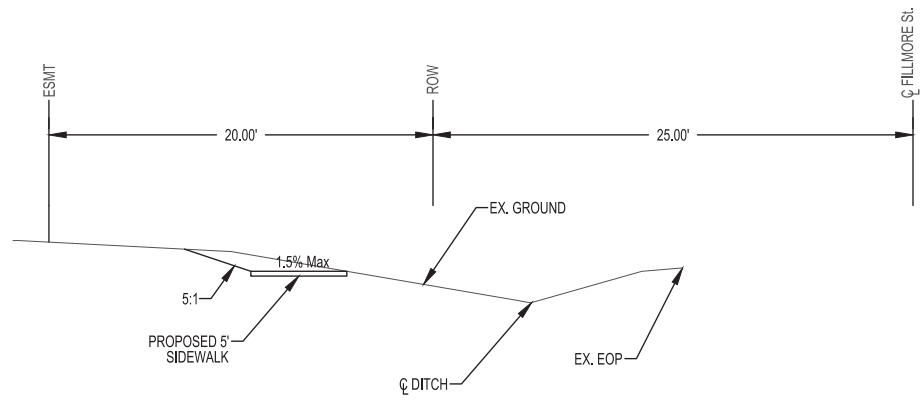
ROUTE NO.	SECTION	COUNTY	TOTAL SHEETS	SHEET NO.
S.B.I. F.A.	19-0088 00-SW	FAYETTE	25	5
FED. ROAD DIST. NO. 7	ILLINOIS	CONTRACT #95911		



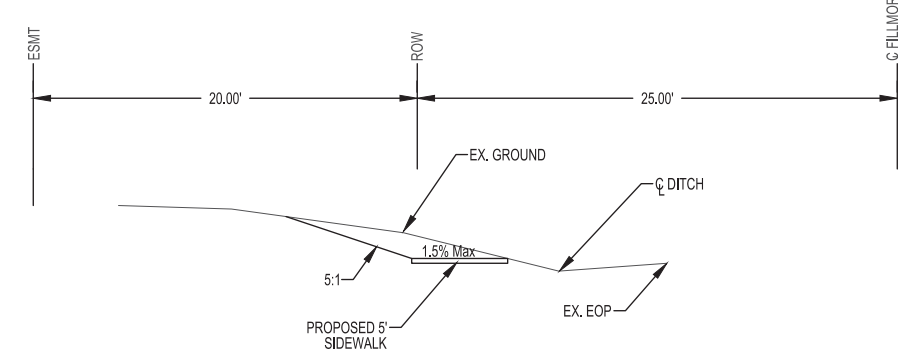
FILLMORE ST
WEST OF ROCK ISLAND AVE
Station 10+00 to Station 13+00



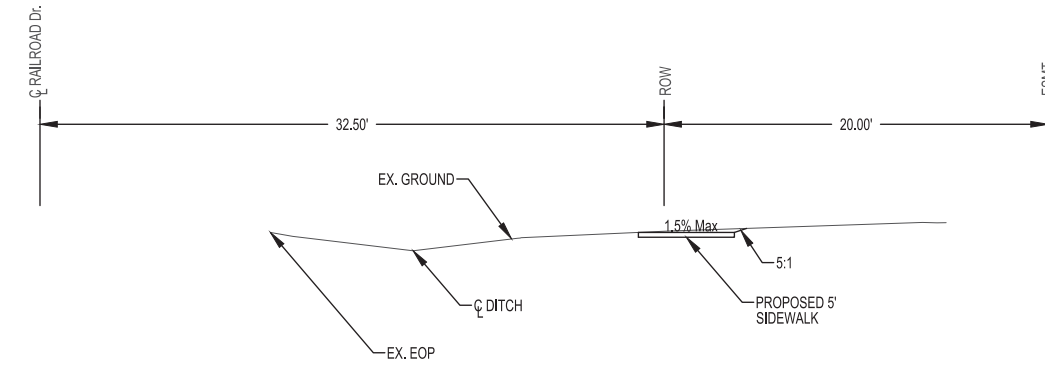
FILLMORE ST
ROCK ISLAND AVE TO SUNSET
Station 13+00 to Station 24+00



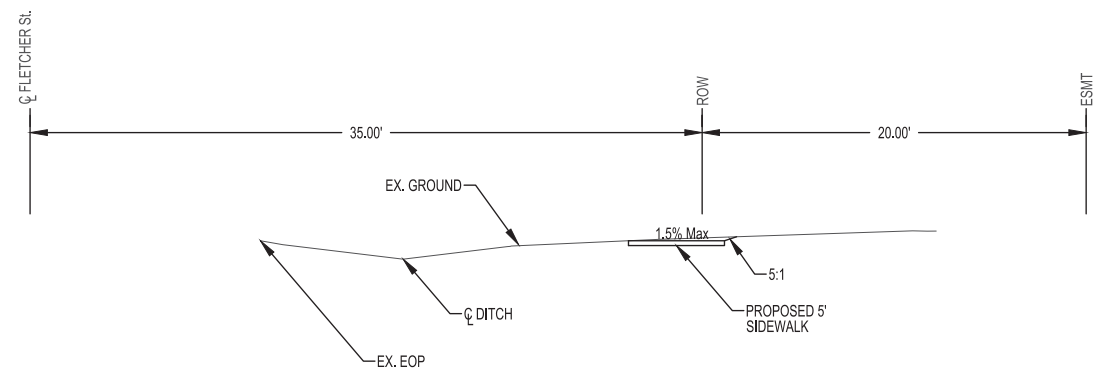
FILLMORE ST
SUNSET TO LOCUST ST
Station 24+00 to Station 50+50



FILLMORE ST
LOCUST ST TO RAILROAD DR
Station 50+50+00 to Station 54+00



RAILROAD DR
Station 60+00 to Station 70+50



FLETCHER ST
Station 70+50 to Station 76+50

NOTE: ALL SLOPES NOT LABELED SHALL MATCH EXISTING SLOPES

REVISION ISSUED	DATE	BY	780788
XXX	202003	XXX	
FIELD BOOK	DRAWN BY	CHECKED BY	FILE LOCATION
	CMP/AJR	MAT/AJR	S:\2018\18280 BG4 (VANDALIA)\DWG\TITLE.DWG
MILANO & GRUNLOH ENGINEERS, LLC 114 W. WASHINGTON AVE. PO BOX 887 EFFINGHAM, IL 62401 Phone: (217) 347-7262 (800) 677-2714 Email: mgeengineers@mgeengineers.com Web: www.mgeengineers.com Design Firm # 184-003108			
TYPICAL SHEET			
SAFE ROUTES TO SCHOOL 19-0088-00-SW VANDALIA, ILLINOIS			
SHEET # 5 OF 25			
JOB # 18280 BG4			

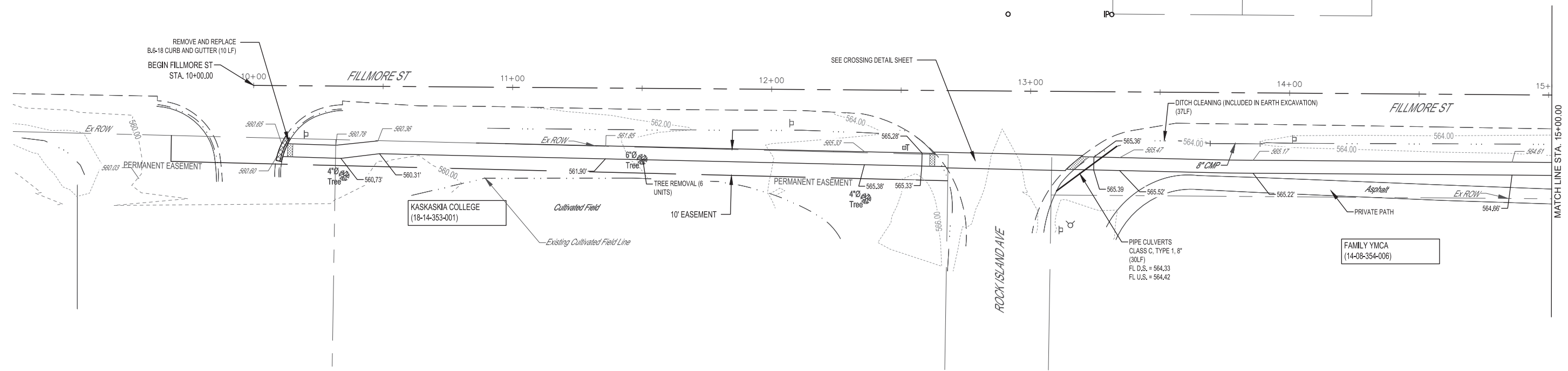
ROUTE NO.	SECTION	COUNTY	TOTAL SHEETS	SHEET NO.
S.B.I. F.A.	19-0088 00-SW	FAYETTE	25	7
FED. ROAD DIST. NO. 7		ILLINOIS	CONTRACT #95911	

REVISION	ISSUED
DATE	BY
XXXXXX	XXX



LEGEND

- TREE (DECIDUOUS)
- FIRE HYDRANT SIGN
- DETECTABLE WARNING
- X.X% SIGNIFIES LONGITUDINAL SLOPE

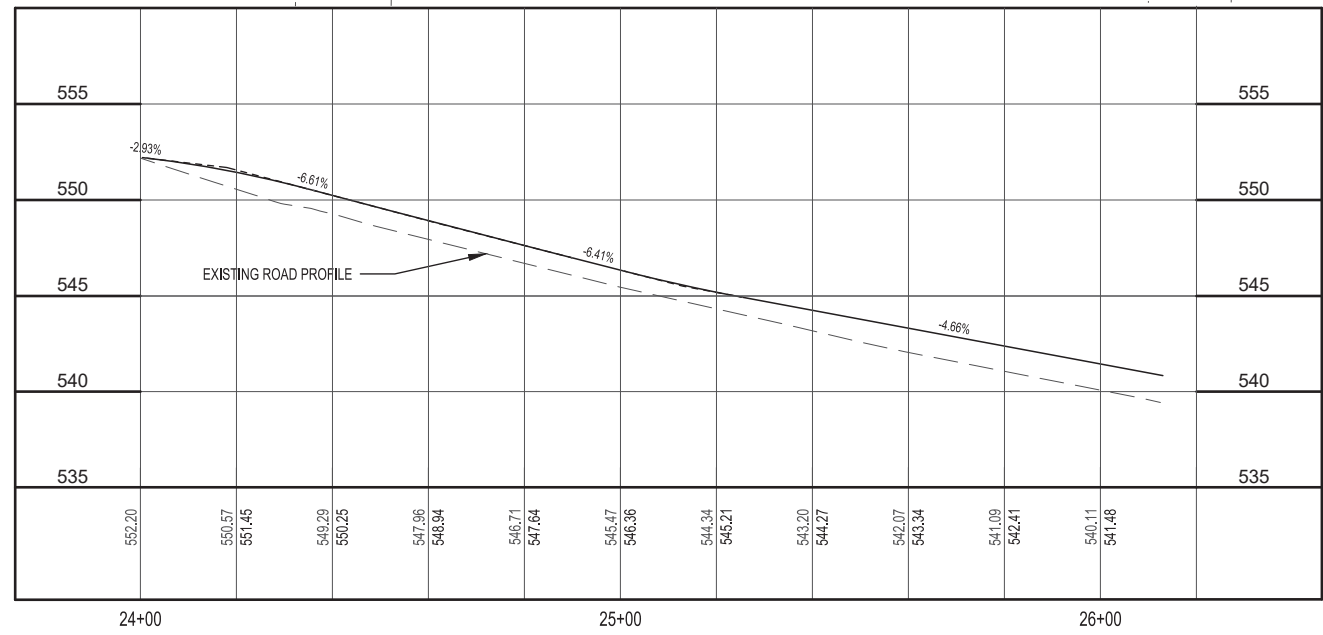
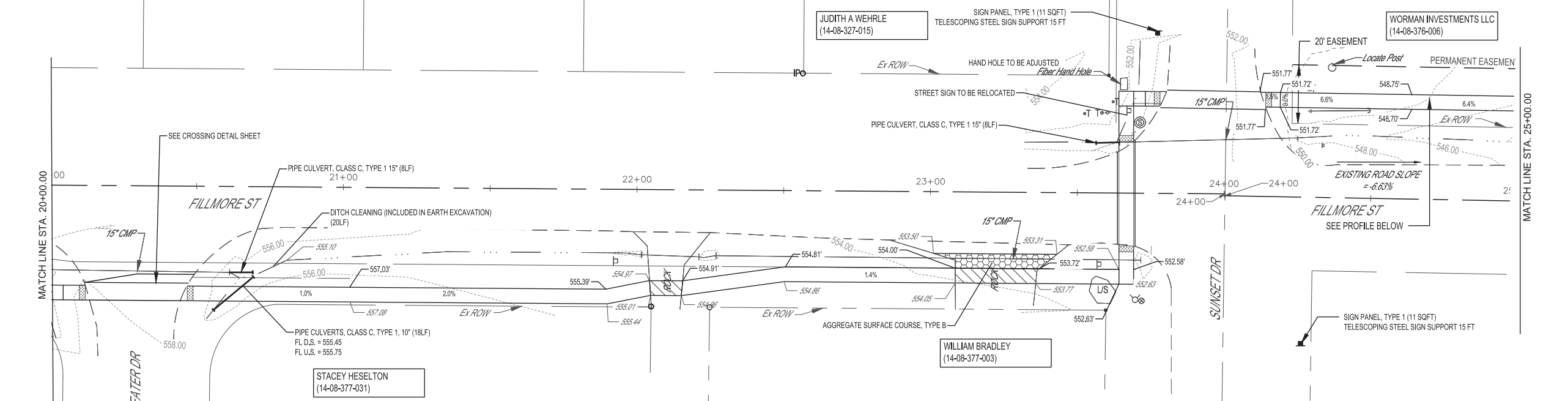
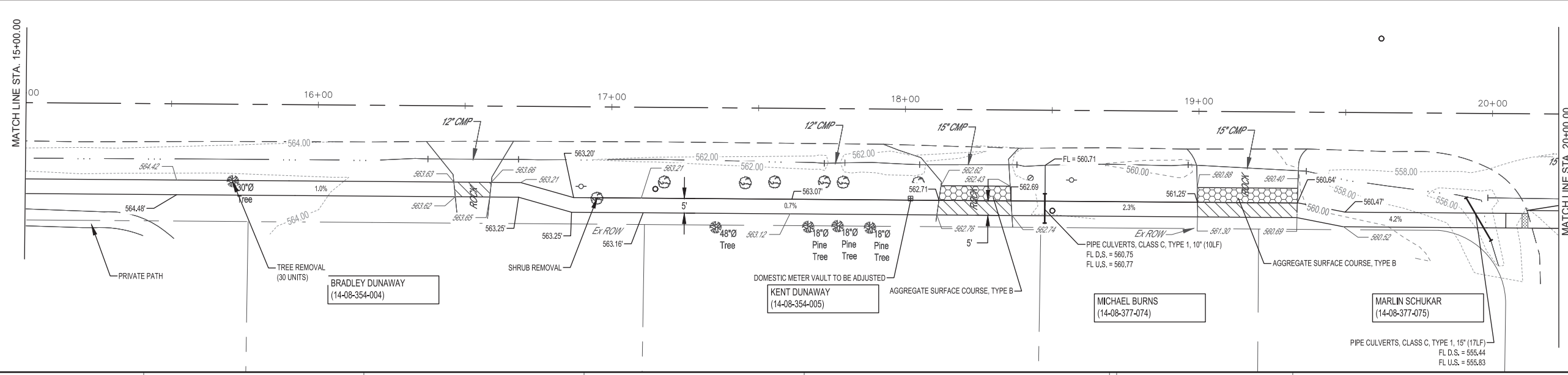


MILANO & GRUNLOH ENGINEERS, LLC
 114 W. WASHINGTON AVE. | PO BOX 887
 EFFINGHAM, IL 62401
 Phone: (217) 347-7262 | (800) 677-2714
 Email: mgeengineers@mgeengineers.com
 Web: www.mgeengineers.com
 Design Firm # 184-003108

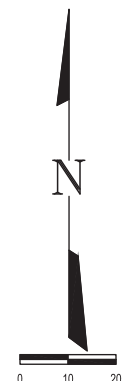


SIDEWALK PLANS
 SAFE ROUTES TO SCHOOL
 19-0088-00-SW
 VANDALIA, ILLINOIS

SHEET #
7 OF 25
 JOB #
18280 BG4



- ### LEGEND
- IRON PIN FOUND
 - IRON PIPE FOUND
 - WOOD POST
 - POWER POLE
 - SIGN
 - TREE (DECIDUOUS)
 - FIRE HYDRANT
 - WATER METER
 - SANITARY MANHOLE
 - DETECTABLE WARNING
 - PCC DRIVEWAY PAVEMENT 6"
 - PC CON SIDEWALK 6"
 - AGGREGATE SURFACE COURSE TYPE B
 - X.X%
- SIGNIFIES LONGITUDINAL SLOPE



NOTE:
SEE CROSSING DETAIL SHEET FOR SUNSET DR. AND FILLMORE ST. GRADES

DATE	REVISION	ISSUED
XXX	XXX	XXX
780.788	FIELD BOOK	
	DRAWN BY	CMP/AJR
	CHECKED BY	MAT. AJR. MN
	FILE LOCATION	S:\2018\18280 BG4 (MNDAL)\DWG\SDWALK\018
	SAVE DATE	12/5/2022 10:33

MILANO & GRUNLOH ENGINEERS, LLC
 114 W. WASHINGTON AVE. | PO BOX 887
 EFFINGHAM, IL 62401
 Phone: (217) 347-7262 | (800) 677-2714
 Email: mgeengineers@mgeengineers.com
 Web: www.mgeengineers.com
 Design Firm # 184-003108

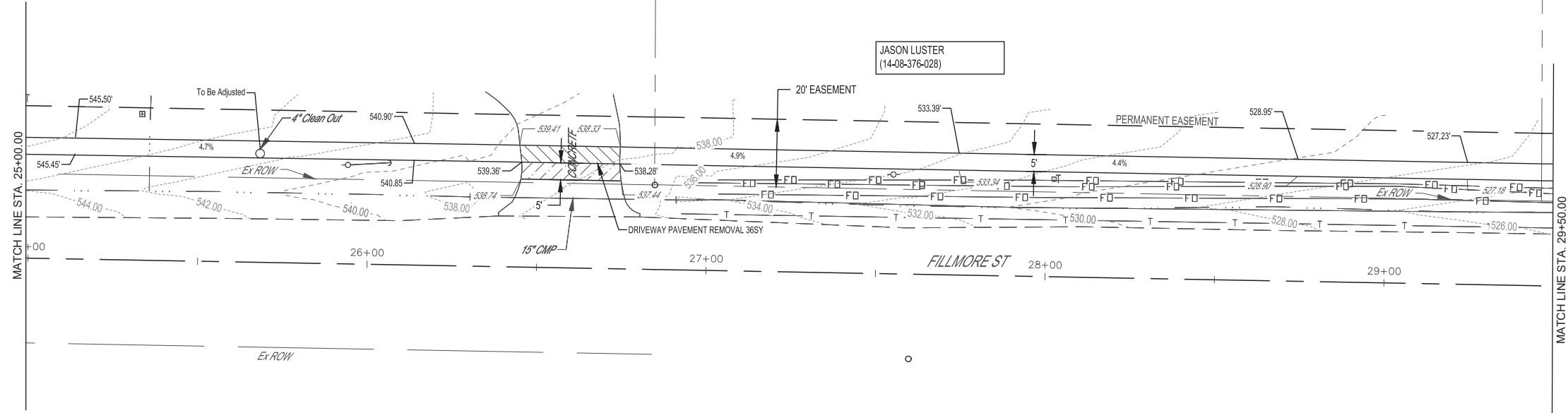
SIDEWALK PLANS
 SAFE ROUTES TO SCHOOL
 19-0088-00-SW
 VANDALIA, ILLINOIS

SHEET #
 8 OF 25

JOB #
 18280 BG4

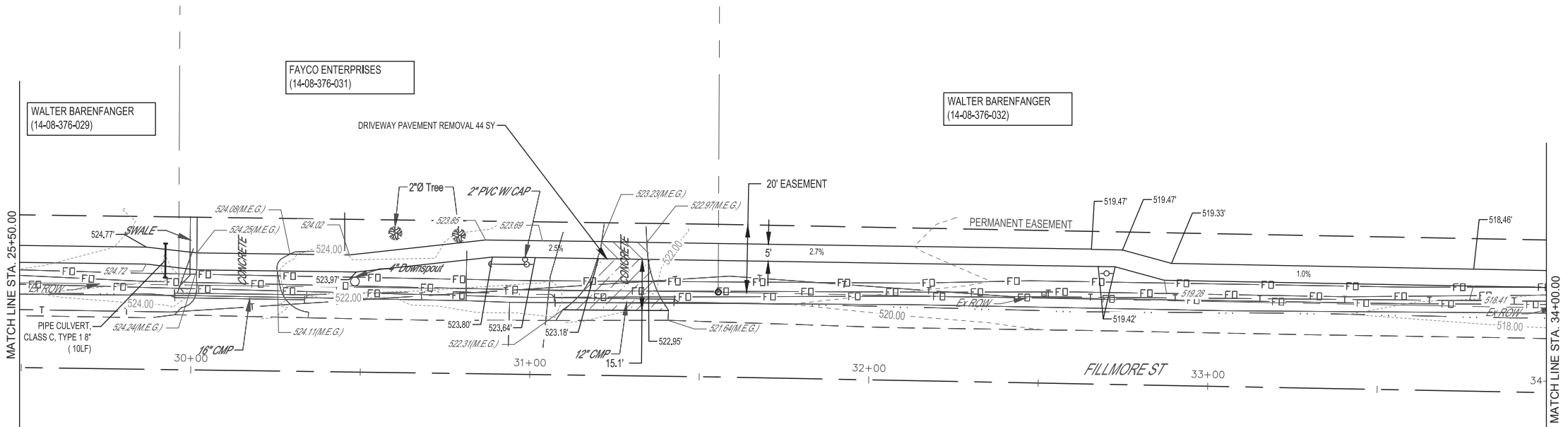
ROUTE NO.	SECTION	COUNTY	TOTAL SHEETS	SHEET NO.
S.B.I. F.A.	19-0088 00-SW	FAYETTE	25	9
FED. ROAD DIST. NO. 7		ILLINOIS	CONTRACT #95911	

REVISION ISSUED	DATE	BY
XXX	2020XXX	XXX
FIELD BOOK	780.788	
DRAWN BY	CMP/AJR	
CHECKED BY	MAT. AJR. MN	
FILE LOCATION	S:\2018\18280 BG4 (VANDALIA)\DWG\SIDEWALK.DWG	
SAVE DATE	12/5/2022 10:33	



LEGEND

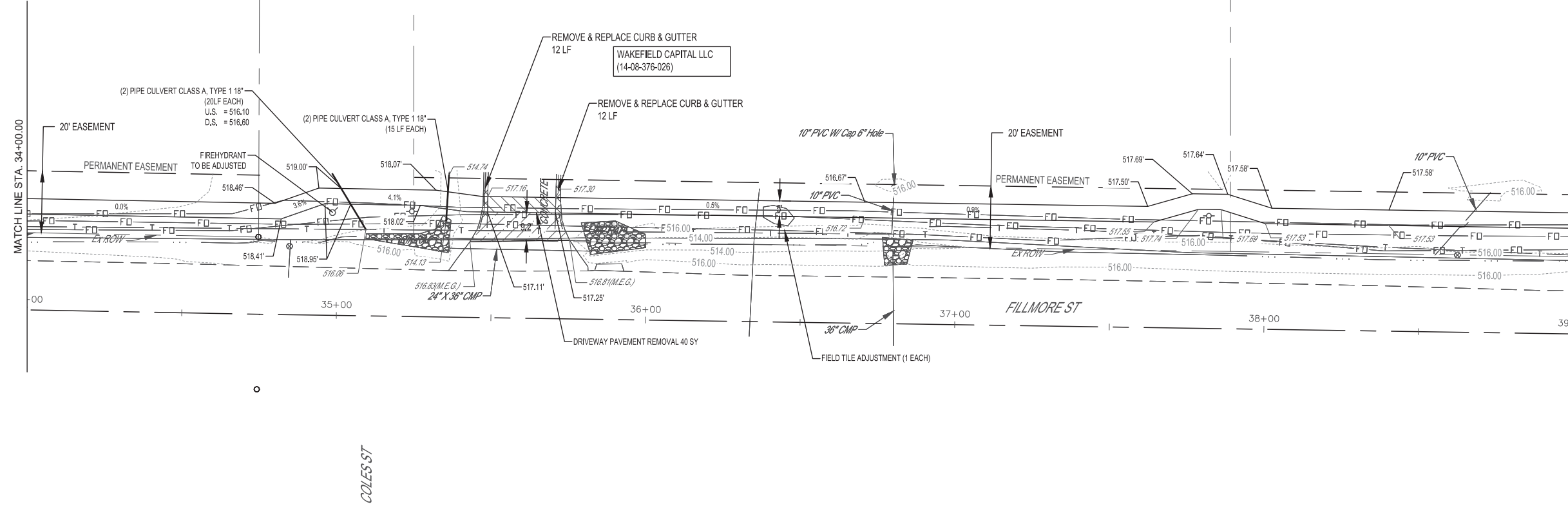
- WOOD POST
- POWER POLE
- SIGN
- FIRE HYDRANT
- WATER METER
- TELEPHONE PEDESTAL
- SANITARY MANHOLE
- GUY ANCHOR
- DETECTABLE WARNING
- PCC DRIVEWAY PAVEMENT 6'
- PC CONC SIDEWALK 6'
- X.X% SIGNIFIES LONGITUDINAL SLOPE



MILANO & GRUNLOH ENGINEERS, LLC
 114 W. WASHINGTON AVE. | PO BOX 897
 EFFINGHAM, IL 62401
 Phone: (217) 347-7262 | (800) 677-2714
 Email: mgeengineers@mgeengineers.com
 Web: www.mgeengineers.com
 Design Firm # 184-003108

SIDEWALK PLANS	SHEET #
SAFE ROUTES TO SCHOOL	9 OF 25
19-0088-00-SW	JOB #
VANDALIA, ILLINOIS	18280 BG4

ROUTE NO.	SECTION	COUNTY	TOTAL SHEETS	SHEET NO.
S.B.I. F.A.	19-0088 00-SW	FAYETTE	25	10
FED. ROAD DIST. NO. 7	ILLINOIS	CONTRACT #95911		

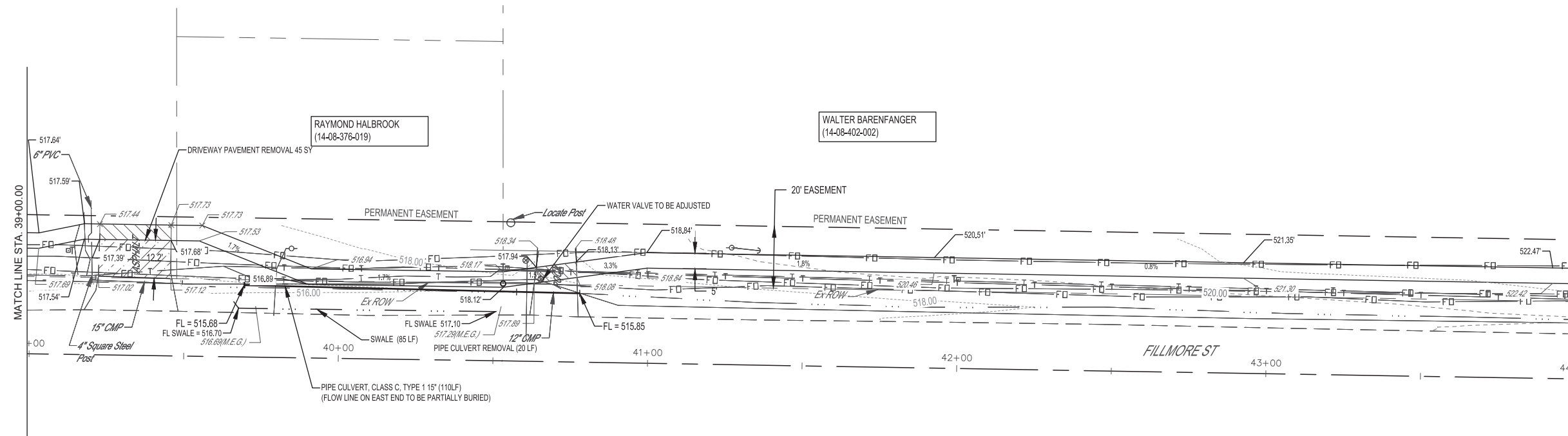


N

0 10 20

LEGEND

- WOOD POST
- POWER POLE
- SIGN
- FIRE HYDRANT
- WATER METER
- VALVE (WATER)
- TELEPHONE PEDESTAL
- SANITARY MANHOLE
- GUY ANCHOR
- DETECTABLE WARNING
- PCC DRIVEWAY PAVEMENT 6"
- RIP RAP EXISTING
- PC CONC SIDEWALK 6"
- X.X%
- SIGNIFIES LONGITUDINAL SLOPE



MILANO & GRUNLOH ENGINEERS, LLC
 114 W. WASHINGTON AVE. | PO BOX 887
 EFFINGHAM, IL 62401
 Phone: (217) 347-7262 | (800) 677-2714
 Email: mgeengineers@gmail.com
 Website: www.mgeengineers.com
 Design Firm # 184-003108

FIELD BOOK: 780.788
 DRAWN BY: CMP/AJR
 CHECKED BY: MAT. AJR. MN
 FILE LOCATION: S:\2018\18280 BG4 (VANDALIA)\DWG\SIDEWALK.DWG
 SAVE DATE: 12/25/2022 10:33

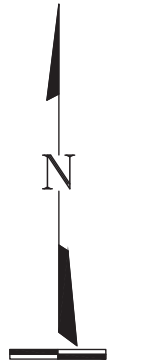
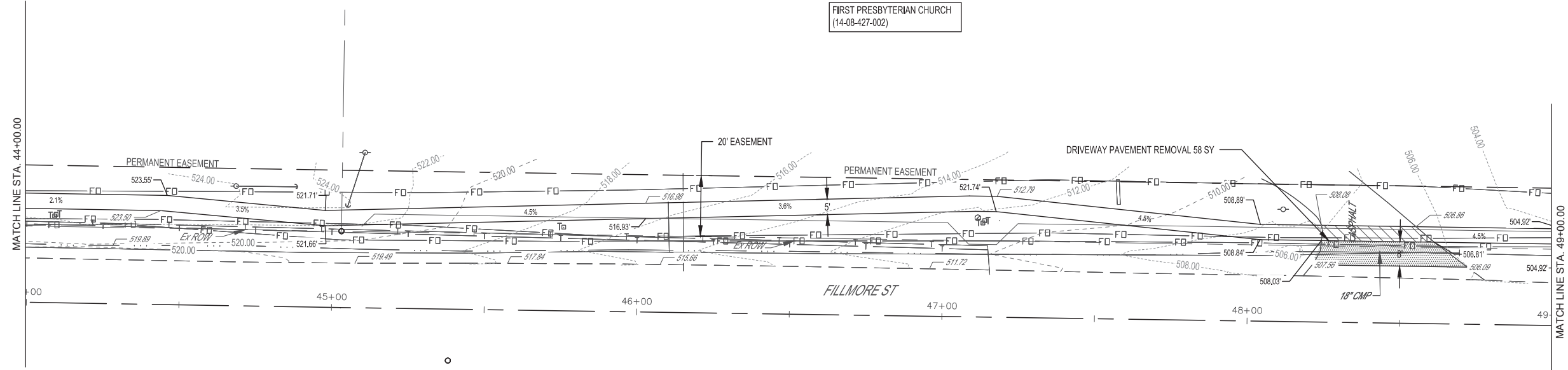
SIDEWALK PLANS
 SAFE ROUTES TO SCHOOL
 19-0088-00-SW
 VANDALIA, ILLINOIS

SHEET #
 10 OF 25

JOB #
 18280 BG4

ROUTE NO.	SECTION	COUNTY	TOTAL SHEETS	SHEET NO.
S.B.I.	19-0088	FAYETTE	25	11
F.A.	00-SW			
FED. ROAD DIST. NO. 7	ILLINOIS	CONTRACT #95911		

FIRST PRESBYTERIAN CHURCH
(14-08-427-002)



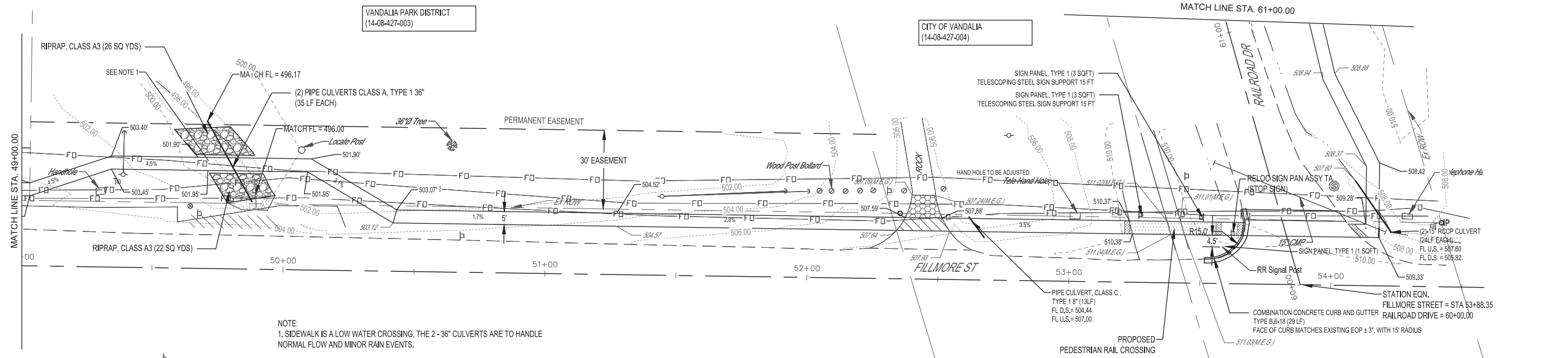
LEGEND

- WOOD POST
- POWER POLE
- SIGN
- FIRE HYDRANT
- WATER METER
- TELEPHONE PEDESTAL
- SANITARY MANHOLE
- GUY ANCHOR
- DETECTABLE WARNING
- PCC DRIVEWAY PAVEMENT 6"
- PC CONC SIDEWALK 6"
- RIP RAP PROPOSED
- INCIDENTAL HMA
- AGGREGATE SURFACE COURSE, TYPE B

REVISION ISSUED	DATE	BY	780.788
XXX	2020000	XXX	
FIELD BOOK	DRAWN BY	CHECKED BY	FILE LOCATION
	CMP/AJR	MAT/AJR	S:\2018\18280 BG4 (VANDALIA)\DWG\SIDEWALK.DWG
			SAVE DATE
			12/25/2022 10:33

VANDALIA PARK DISTRICT
(14-08-427-003)

CITY OF VANDALIA
(14-08-427-004)



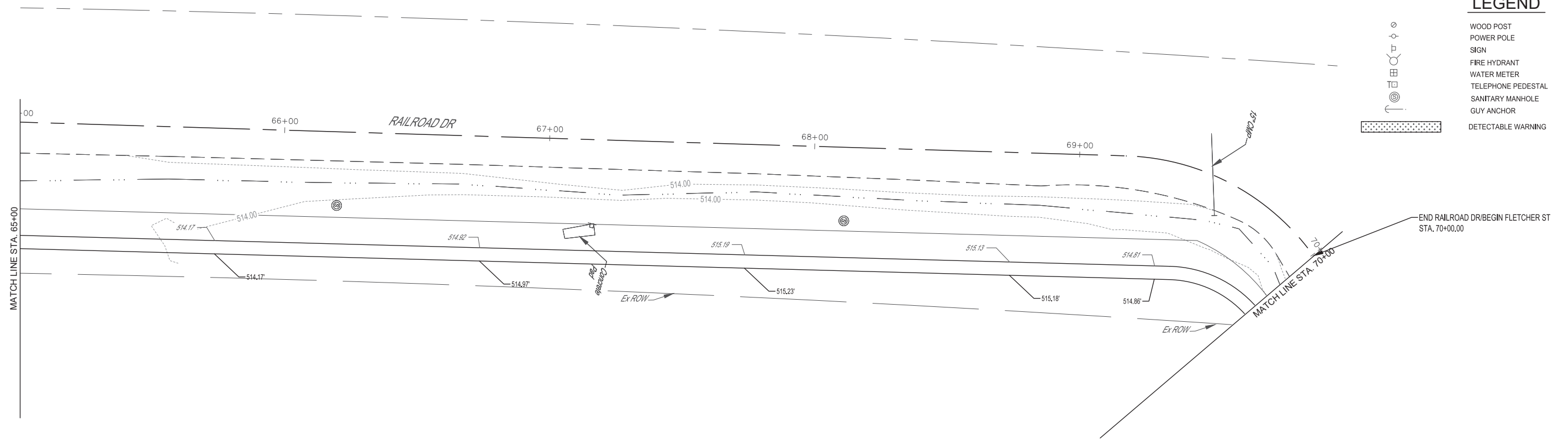
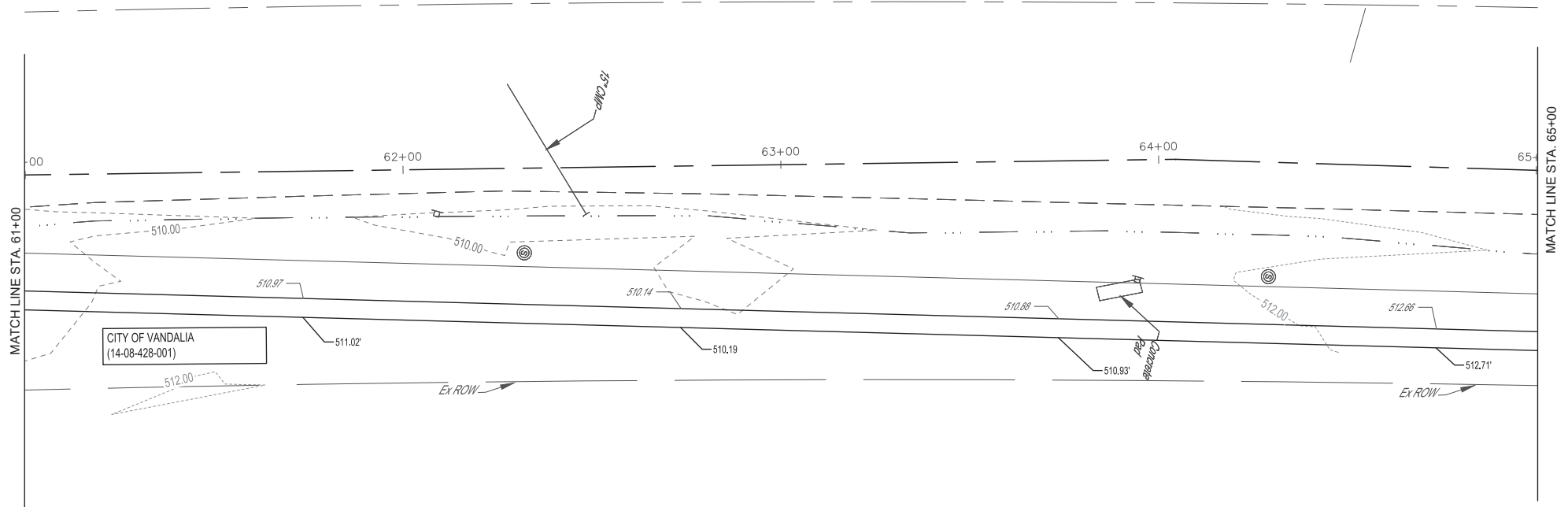
NOTE:
1. SIDEWALK IS A LOW WATER CROSSING, THE 2 - 36" CULVERTS ARE TO HANDLE NORMAL FLOW AND MINOR RAIN EVENTS.

LOCUST ST

MILANO & GRUNLOH ENGINEERS, LLC
114 W. WASHINGTON AVE. | PO BOX 887
EFFINGHAM, IL 62401
Phone: (217) 347-7262 | (800) 677-2714
Email: mgeengineers@mgeengineers.com
Web: www.mgeengineers.com
Design Firm # 184-003108

SIDEWALK PLANS	SHEET #
SAFE ROUTES TO SCHOOL	11 OF 25
19-0088-00-SW	JOB #
VANDALIA, ILLINOIS	18280 BG4

ROUTE NO.	SECTION	COUNTY	TOTAL SHEETS	SHEET NO.
S.B.I. F.A.	19-0088 00-SW	FAYETTE	25	12
FED. ROAD DIST. NO. 7	ILLINOIS	CONTRACT #95911		



LEGEND

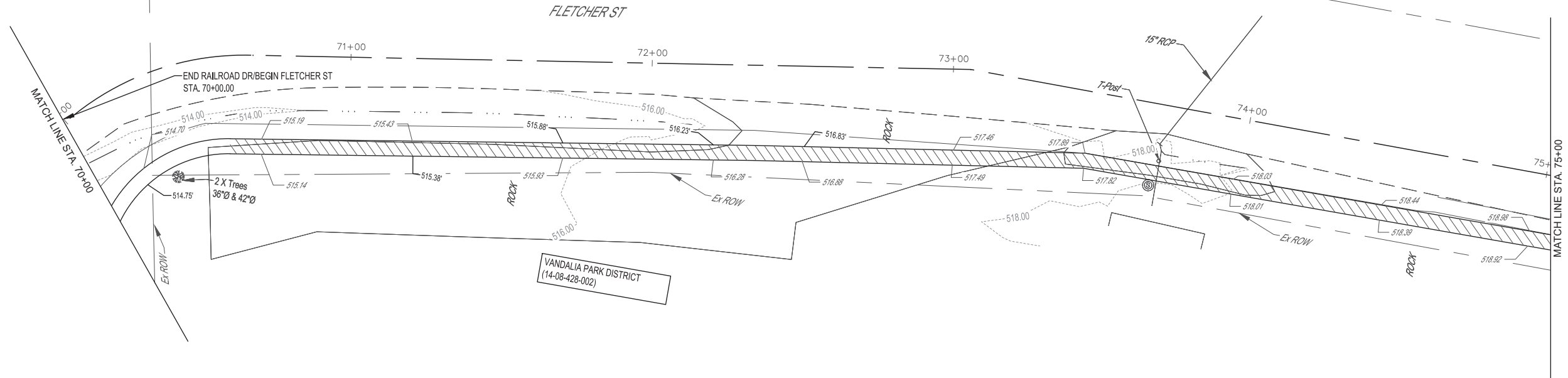
- WOOD POST
- POWER POLE
- SIGN
- FIRE HYDRANT
- WATER METER
- TELEPHONE PEDESTAL
- SANITARY MANHOLE
- GUY ANCHOR
- DETECTABLE WARNING

REVISION ISSUED	DATE	BY	780.788
XXX	XXXXXX	XXX	
FIELD BOOK	780.788	DRAWN BY	CMP/AJR
CHECKED BY	MAT. AJR. MN	FILE LOCATION	S:\2018\18280 BG4 (VANDALIA)\DWG\SIDEWALK.DWG
SAVE DATE	12/5/2022 10:33		

MILANO & GRUNLOH ENGINEERS, LLC
 114 W. WASHINGTON AVE. | PO BOX 887
 EFFINGHAM, IL 62401
 Phone: (217) 347-7262 | (800) 677-2714
 Email: mgeengineers@mgeengineers.com
 Web: www.mgeengineers.com
 Design Firm # 184-003108

SIDEWALK PLANS	SHEET #
SAFE ROUTES TO SCHOOL	12 OF 25
19-0088-00-SW	JOB #
VANDALIA, ILLINOIS	18280 BG4

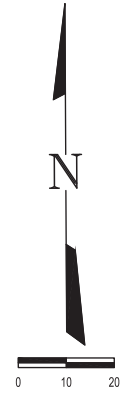
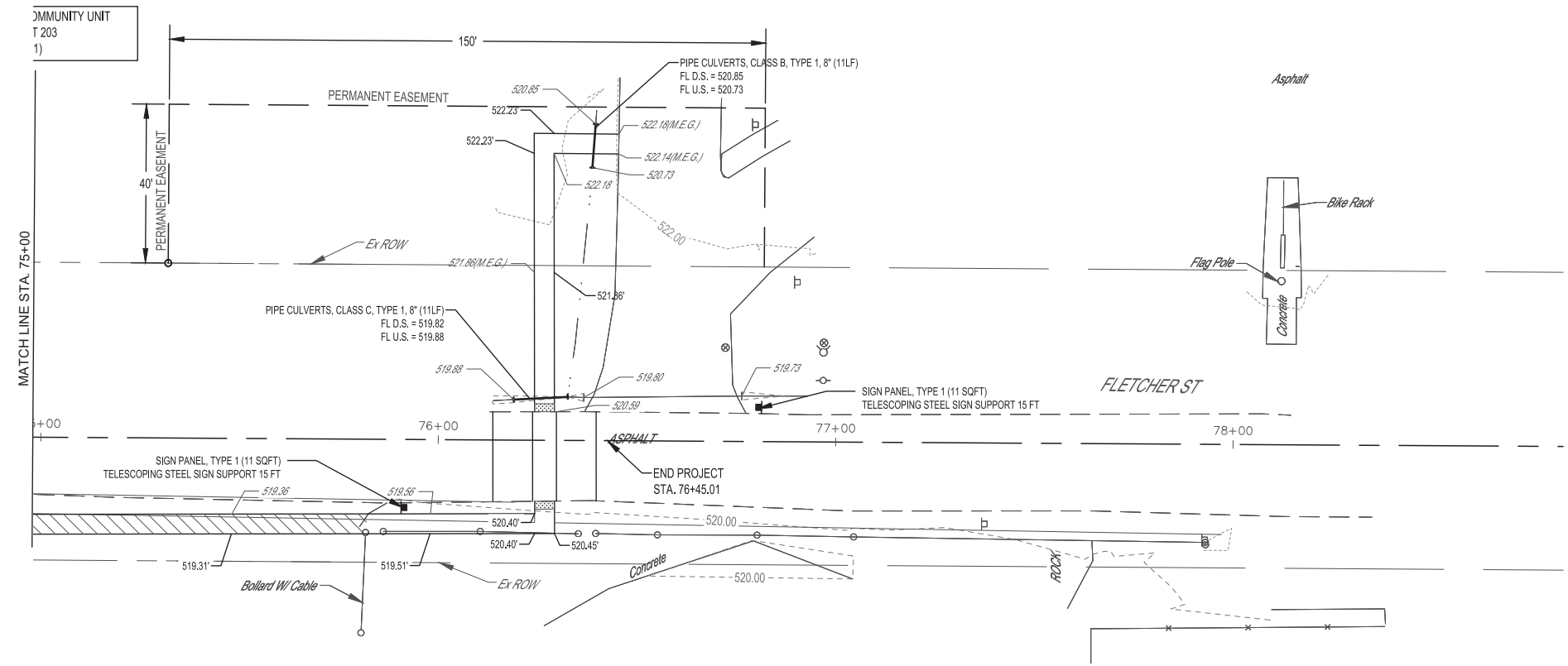
ROUTE NO.	SECTION	COUNTY	TOTAL SHEETS	SHEET NO.
S.B.I.	19-0088	FAYETTE	25	13
F.A.	00-SW			
FED. ROAD DIST. NO. 7	ILLINOIS	CONTRACT #95911		



LEGEND

- WOOD POST
- POWER POLE
- SIGN
- FIRE HYDRANT
- WATER METER
- TELEPHONE PEDESTAL
- SANITARY MANHOLE
- GUY ANCHOR
- DETECTABLE WARNING
- PC CONC SIDEWALK 6"

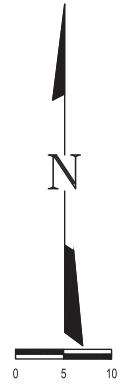
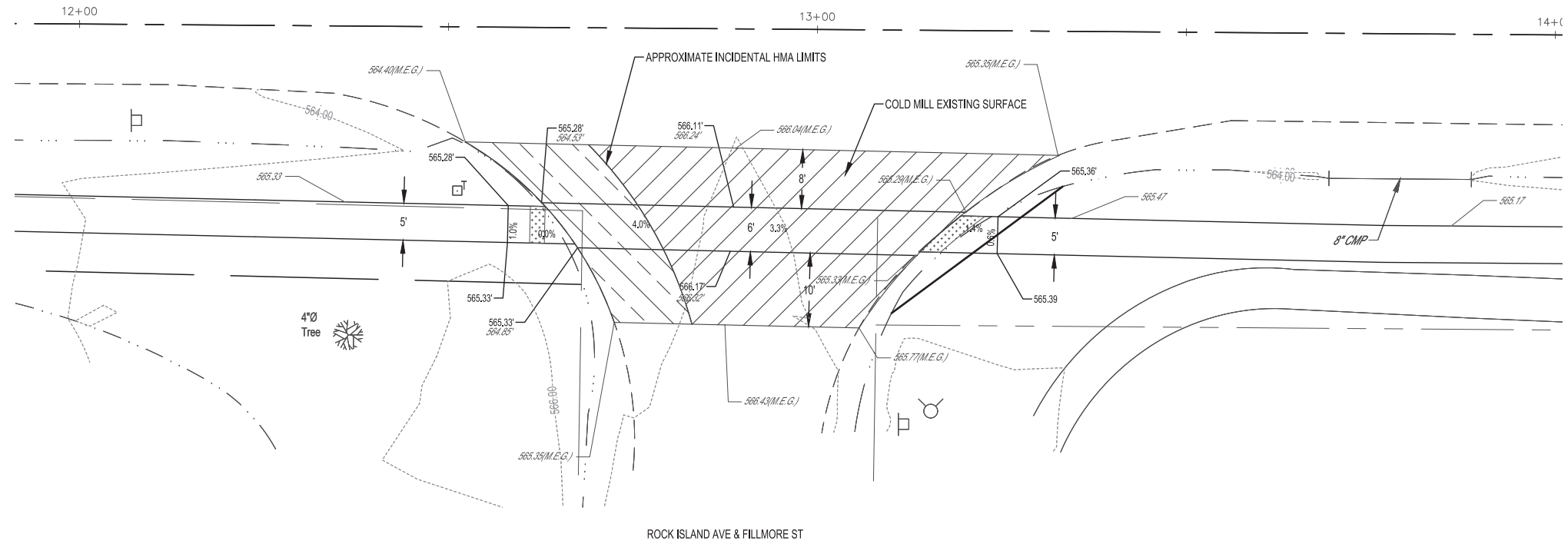
REVISION ISSUED	DATE	BY	780.788
	20200303	XXX	
FIELD BOOK	DRAWN BY	CHECKED BY	FILE LOCATION
	CMP/AJR	MAT/AJR	S:\2018\18280 BG4 (VANDALIA)\DWG\SIDEWALK.DWG
SAVE DATE	12/5/2022 10:33		



MILANO & GRUNLOH ENGINEERS, LLC
 114 W. WASHINGTON AVE. | PO BOX 887
 EFFINGHAM, IL 62401
 Phone: (217) 347-7262 | (800) 677-2714
 Email: mgeengineers@mgeengineers.com
 Web: www.mgeengineers.com
 Design Firm # 184-003108

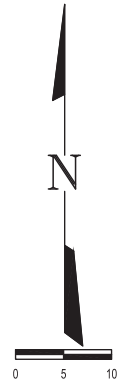
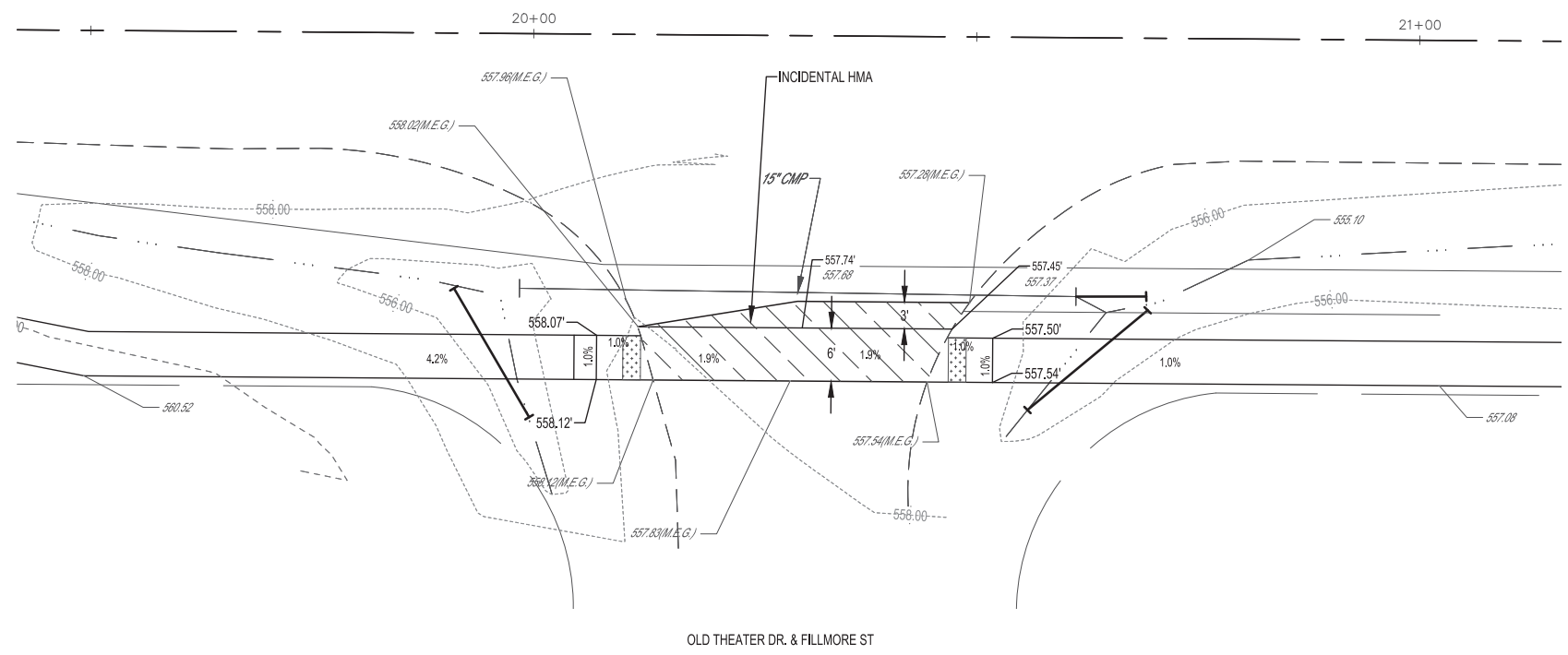
SIDEWALK PLANS	SHEET #
SAFE ROUTES TO SCHOOL	13 OF 25
19-0088-00-SW	JOB #
VANDALIA, ILLINOIS	18280 BG4

ROUTE NO.	SECTION	COUNTY	TOTAL SHEETS	SHEET NO.
S.B.I.	19-0088	FAYETTE	25	14
F.A.	00-SW			
FED. ROAD DIST. NO. 7	ILLINOIS	CONTRACT #95911		




- LEGEND**
- × 100.00 ELEVATION (EXISTING)
 - × 100.00 ELEVATION (PROPOSED)
 - × 100.00 (M.E.G.) ELEVATION (EXISTING)(MATCH EXISTING GRADE)
 - [Hatched Box] COLD MILLING
 - [Diagonal Lines Box] INCIDENTAL HMA
 - [Dashed Box] DETECTABLE WARNING
 - X.X% RUNNING SLOPE OF SIDEWALK

REVISION ISSUED	DATE	BY	APP
	XXXXXX	XXXX	
FIELD BOOK	780.788		
DRAWN BY	CMP/AJR		
CHECKED BY	MAT. AJR. MN		
FILE LOCATION	S:\2018\18280 BG4 (VANDALIA)\DWG\CROSSING DETAILS.DWG		
SAVE DATE	8/10/2021 08:47		



- LEGEND**
- × 100.00 ELEVATION (EXISTING)
 - × 100.00 ELEVATION (PROPOSED)
 - × 100.00 (M.E.G.) ELEVATION (EXISTING)(MATCH EXISTING GRADE)
 - [Hatched Box] COLD MILLING
 - [Diagonal Lines Box] INCIDENTAL HMA
 - [Dashed Box] DETECTABLE WARNING
 - X.X% RUNNING SLOPE OF SIDEWALK

MILANO & GRUNLOH ENGINEERS, LLC
 114 W. WASHINGTON AVE. | PO BOX 887
 EFFINGHAM, IL 62401
 Phone: (217) 347-7262 | (800) 677-2714
 Email: mgeengineers@mgeengineers.com
 Web: www.mgeengineers.com
 Design Firm # 184-003108



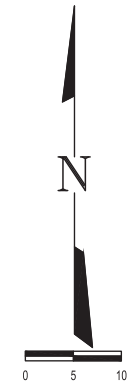
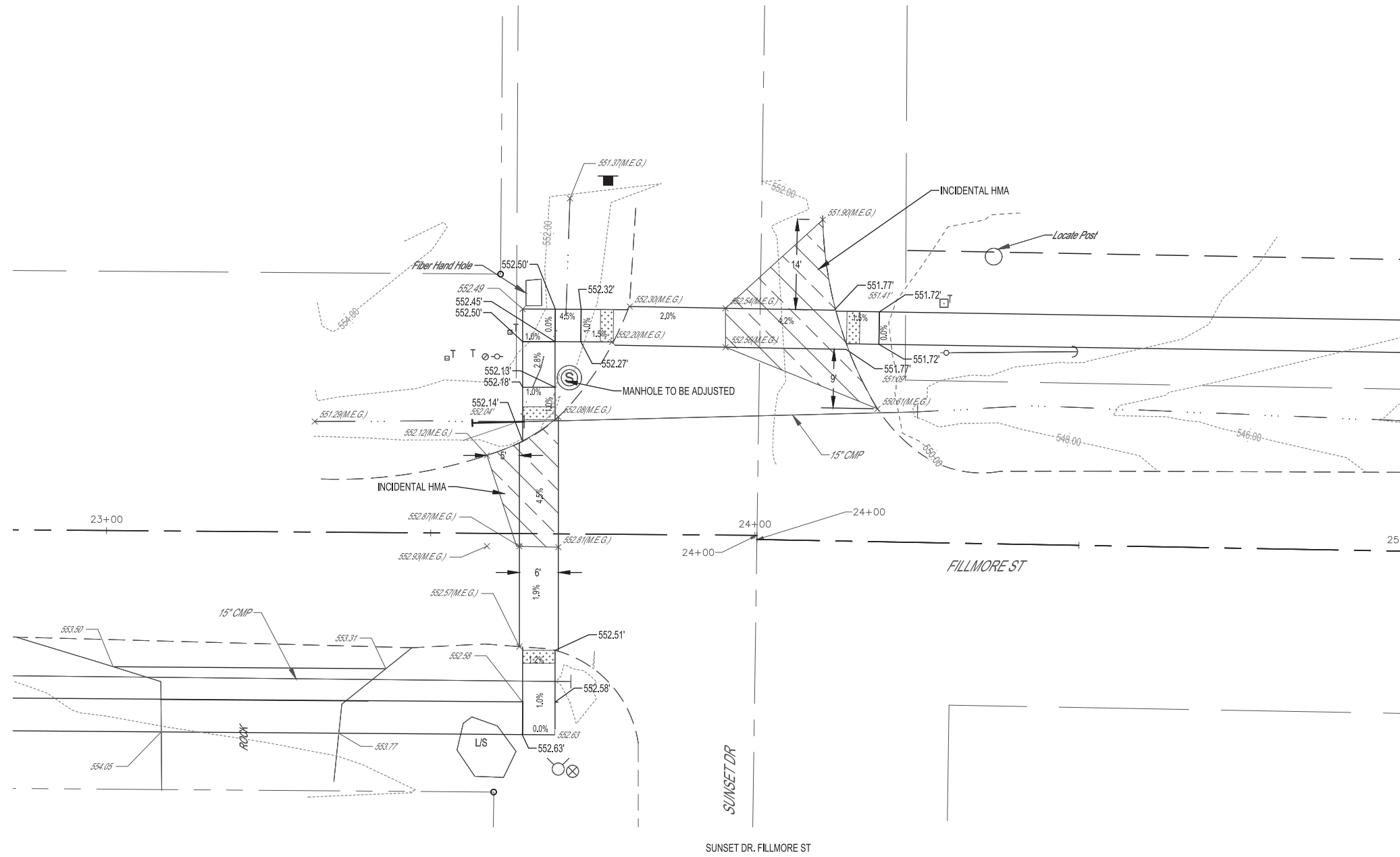
CROSSING DETAIL
 SAFE ROUTES TO SCHOOL
 19-0088-00-SW
 VANDALIA, ILLINOIS

SHEET #
 14 OF 25

JOB #
 18280 BG4

ROUTE NO.	SECTION	COUNTY	TOTAL SHEETS	SHEET NO.
S.B.I. F.A.	19-0088 00-SW	FAYETTE	25	15
FED. ROAD DIST. NO. 7		ILLINOIS	CONTRACT #95911	

BY	DATE	REVISION/ISSUED
XXX	XXXXXX	XXX



- LEGEND**
- x 100.00 ELEVATION (EXISTING)
 - x 100.00 ELEVATION (PROPOSED)
 - x 100.00 (M.E.G.) ELEVATION (EXISTING)(MATCH EXISTING GRADE)
 - [Hatched Box] COLD MILLING
 - [Diagonal Line Box] INCIDENTAL HMA
 - [Dashed Line Box] DETECTABLE WARNING
 - X,X% RUNNING SLOPE OF SIDEWALK

780.788	FIELD BOOK
CMP/AJR	DRAWN BY
MAT. AJR, MN	CHECKED BY
S:\2018\18280 BG1 (VANDALIA)\DWG\CROSSING DETAILS.DWG	FILE LOCATION
8/10/2021 08:47	SAVE DATE

MILANO & GRUNLOH ENGINEERS, LLC
 114 W. WASHINGTON AVE. | PO BOX 887
 EFFINGHAM, IL 62401
 Phone: (217) 347-7262 | (800) 677-2714
 Email: mgenr@milanoandgrunloh.com
 Web: www.milanoandgrunloh.com
 Design Firm # 184-003108

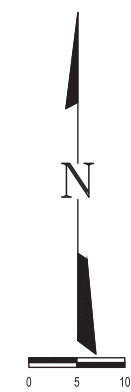
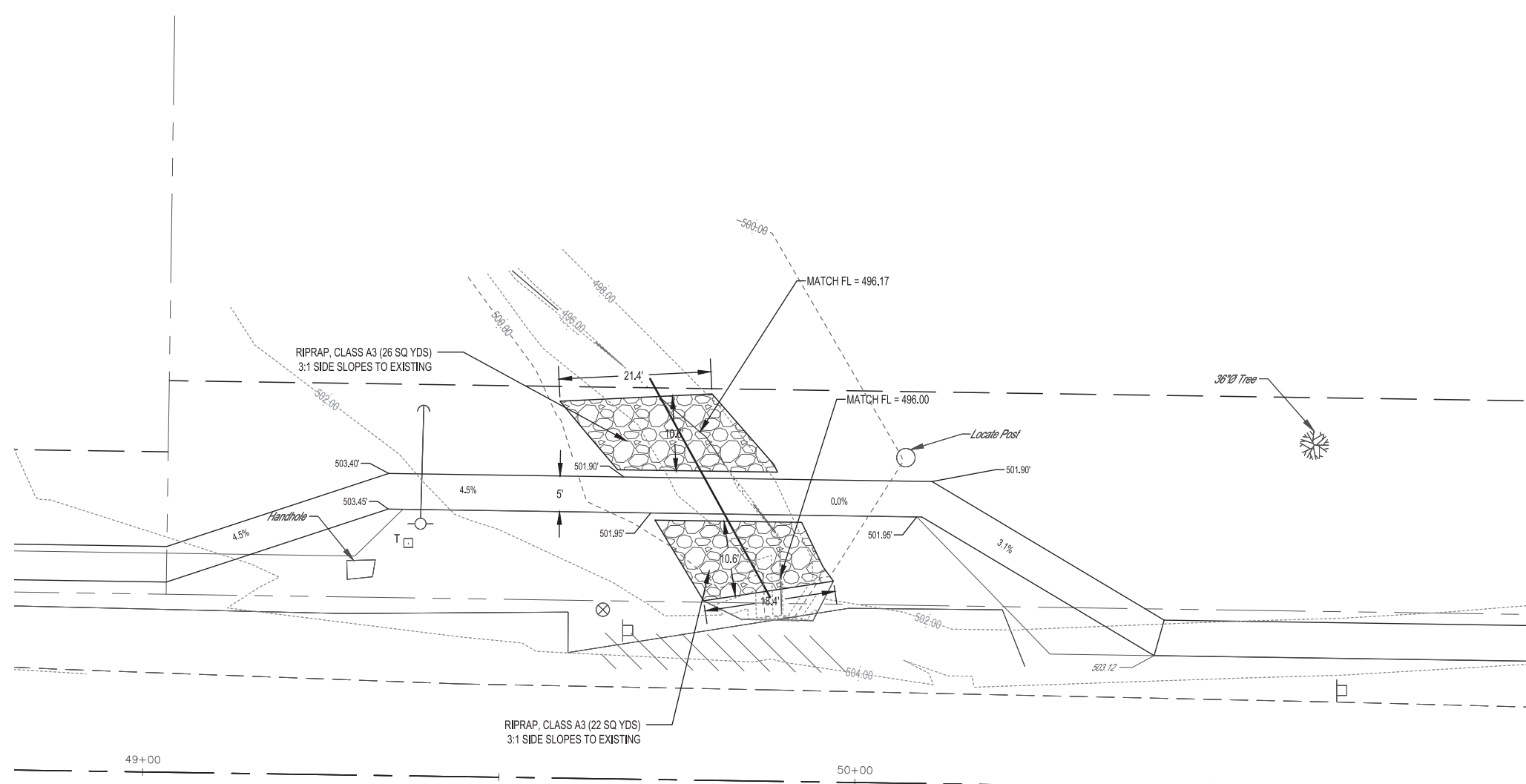


CROSSING DETAIL
 SAFE ROUTES TO SCHOOL
 19-0088-00-SW
 VANDALIA, ILLINOIS

SHEET #
15 OF 25
 JOB #
18280 BG4

ROUTE NO.	SECTION	COUNTY	TOTAL SHEETS	SHEET NO.
S.B.I. F.A.	19-0088 00-SW	FAYETTE	25	16
FED. ROAD DIST. NO. 7	ILLINOIS	CONTRACT #95911		

BY	DATE	REVISION/ISSUED
XXX	XXXXXX	XXX



LEGEND

x 100.00	ELEVATION (EXISTING)
x 100.00	ELEVATION (PROPOSED)
x 100.00 (M.E.G.)	ELEVATION (EXISTING)(MATCH EXISTING GRADE)
[Hatched Pattern]	COLD MILLING
[Diagonal Lines]	INCIDENTAL HMA
[Dashed Line]	DETECTABLE WARNING
XX%	RUNNING SLOPE OF SIDEWALK

780.788	FIELD BOOK
CMP/AJR	DRAWN BY
MAT. AJR. MN	CHECKED BY
S:\2018\18280 BG4 (VANDALIA)\DWG\CROSSING DETAILS.DWG	FILE LOCATION
8/10/2021 08:47	SAVE DATE

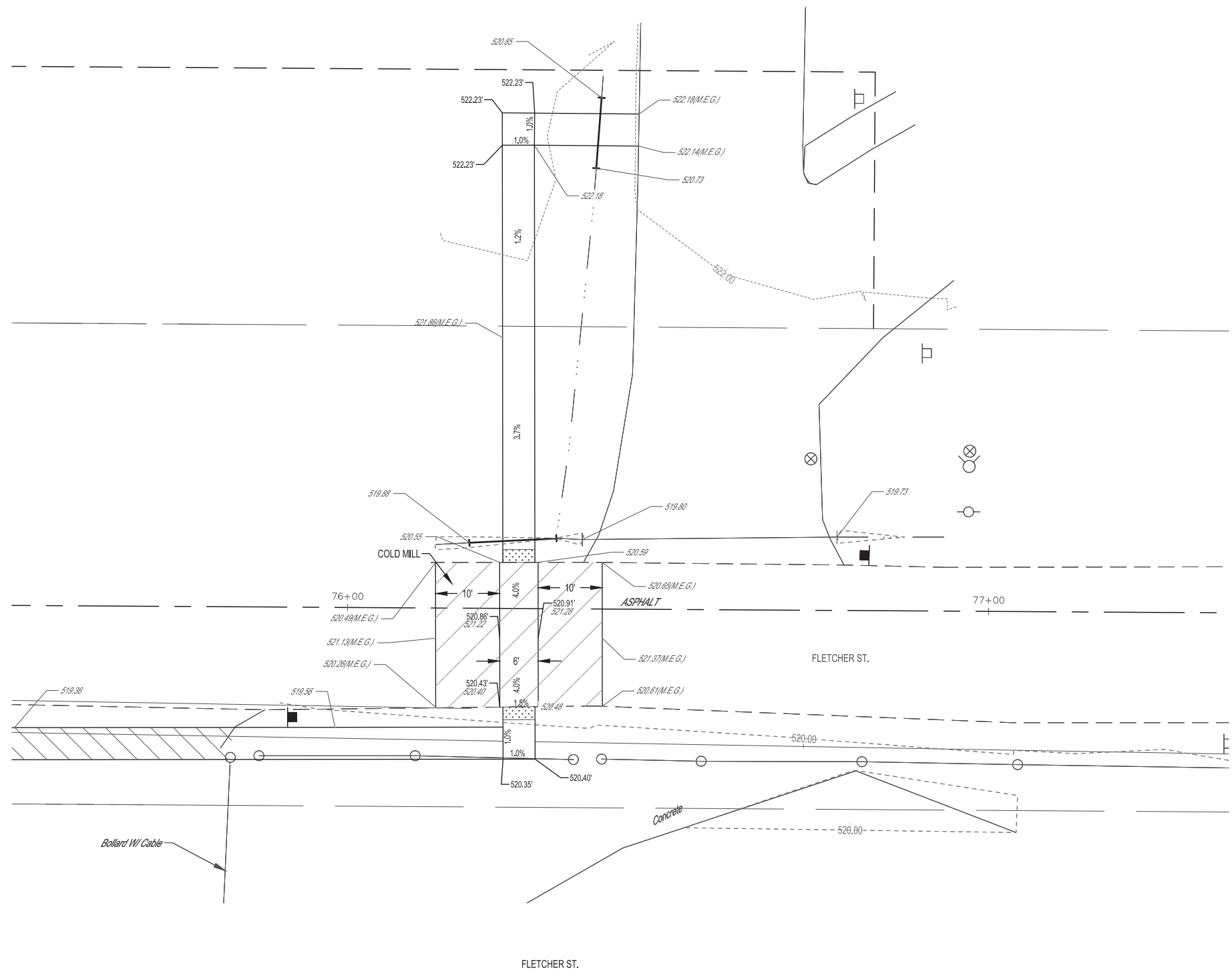
MILANO & GRUNLOH ENGINEERS, LLC
 114 W. WASHINGTON AVE. | PO BOX 887
 EFFINGHAM, IL 62401
 Phone: (217) 347-7262 | (800) 677-2714
 Email: mgenr@mgengineers.com
 Web: www.mgengineers.com
 Design Firm # 184-003108



CROSSING DETAIL
SAFE ROUTES TO SCHOOL 19-0088-00-SW VANDALIA, ILLINOIS
SHEET # 16 OF 25
JOB # 18280 BG4

ROUTE NO.	SECTION	COUNTY	TOTAL SHEETS	SHEET NO.
S.B.I. F.A.	19-0088 00-SW	FAYETTE	25	18
FED. ROAD DIST. NO. 7		ILLINOIS	CONTRACT #95911	

BY	DATE	REVISION/ISSUED
XXX	XX/XX/XX	XXX



- LEGEND**
- x 100.00 ELEVATION (EXISTING)
 - x 100.00 ELEVATION (PROPOSED)
 - x 100.00 (M.E.G.) ELEVATION (EXISTING) (MATCH EXISTING GRADE)
 - [Hatching] COLD MILLING
 - [Hatching] INCIDENTAL HMA
 - [Hatching] DETECTABLE WARNING
 - X.X% RUNNING SLOPE OF SIDEWALK

FIELD BOOK	780.788
DRAWN BY	CMP/AJR
CHECKED BY	MAT. AJR. MN
FILE LOCATION	S:\2018\18280 BG4 (VANDALIA)\DWG\CROSSING DETAILS.DWG
SAVE DATE	8/10/2021 08:47

MILANO & GRUNLOH ENGINEERS, LLC
114 W. WASHINGTON AVE. | PO BOX 887
EFFINGHAM, IL 62401
Phone: (217) 347-7262 | (800) 677-2714
Email: mge@milanoandgrunloh.com
Web: www.milanoandgrunloh.com
Design Firm # 184-003108

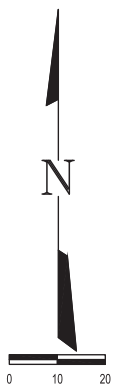
CROSSING DETAIL
SAFE ROUTES TO SCHOOL
19-0088-00-SW
VANDALIA, ILLINOIS

SHEET #
18 OF 25


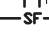

JOB #
18280 BG4

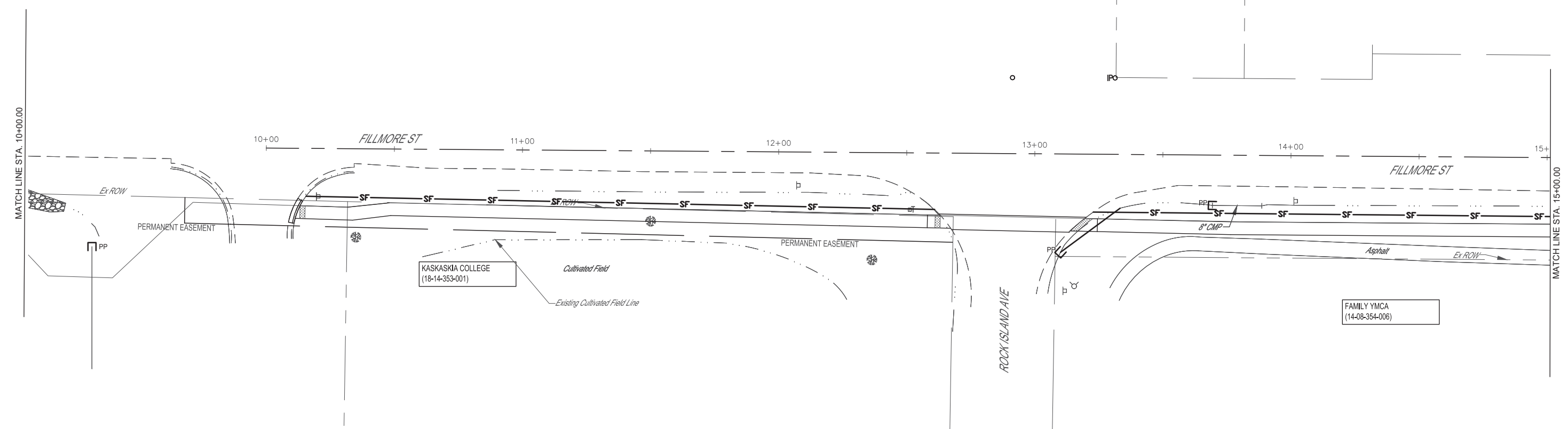
ROUTE NO.	SECTION	COUNTY	TOTAL SHEETS	SHEET NO.
S.B.I. F.A.	19-0088 00-SW	FAYETTE	25	19
FED. ROAD DIST. NO. 7	ILLINOIS	CONTRACT #95911		

DATE	REVISION/ISSUED
XXX/XXX/XXX	XXX



LEGEND

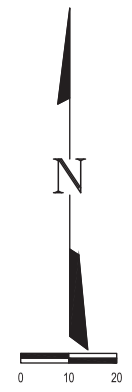
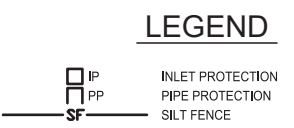
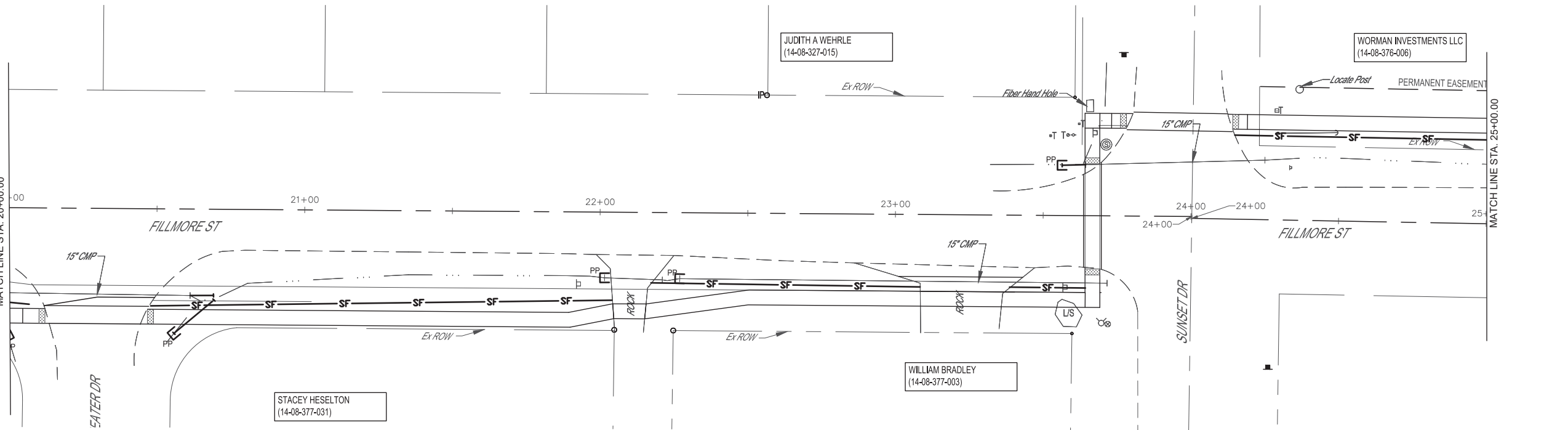
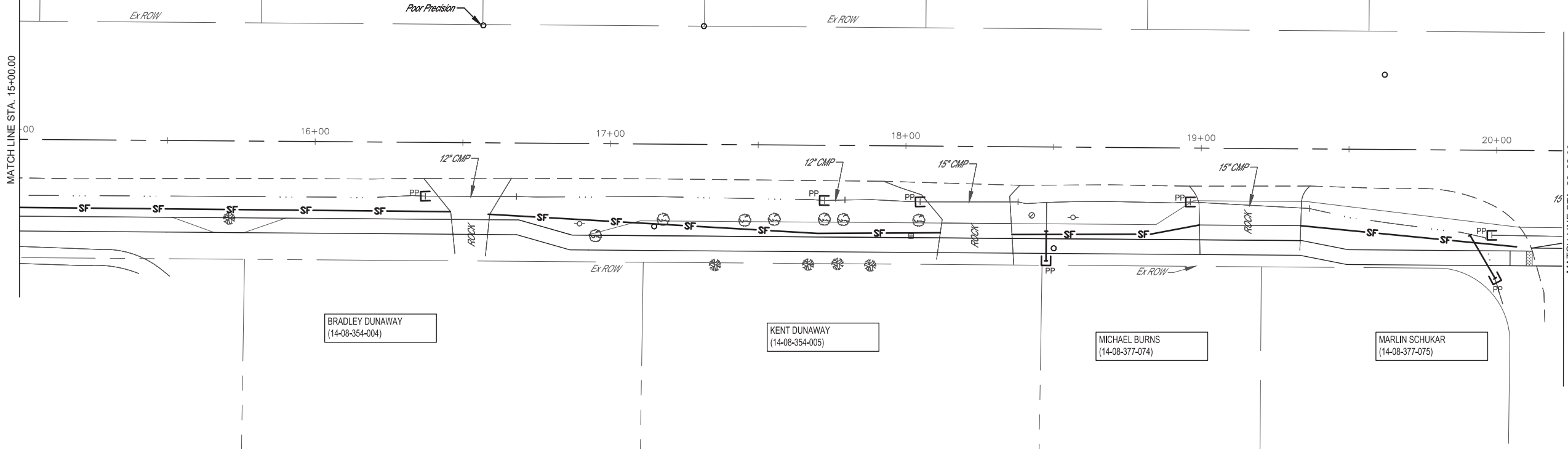
-  IP INLET PROTECTION
-  PP PIPE PROTECTION
-  SF SILT FENCE



FIELD BOOK	780.788
DRAWN BY	CMP/AJR
CHECKED BY	MAT. AJR. MN
FILE LOCATION	S:\2018\18280 BG4 (VANDALIA)\DWG\EROSION CONTROL.DWG
SAVE DATE	5/27/2021 14:25

MILANO & GRUNLOH ENGINEERS, LLC
 114 W. WASHINGTON AVE. | PO BOX 887
 EFFINGHAM, IL 62401
 Phone: (217) 347-7262 | (800) 677-2714
 Email: mgeengineers@mgeengineers.com
 Web: www.mgeengineers.com
 Design Firm # 184-003108

ROUTE NO.	SECTION	COUNTY	TOTAL SHEETS	SHEET NO.
S.B.I.	19-0088	FAYETTE	25	20
F.A.	00-SW			
FED. ROAD DIST. NO. 7	ILLINOIS	CONTRACT #95911		



REVISION ISSUED	DATE	BY	780.788
XXX	XXXXXX	XXX	
FIELD BOOK	DATE	BY	780.788
DRAWN BY	CMP / AJR	CHECKED BY	
FILE LOCATION	S:\2018\18280 BG4 (VANDALIA)\DWG\EROSION CONTROL.DWG	SAVE DATE	5/27/2021 14:25

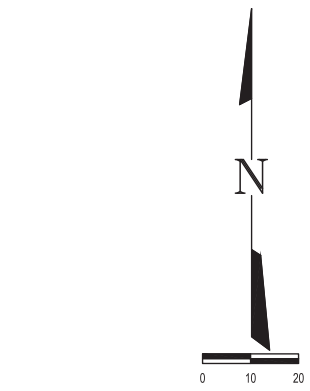
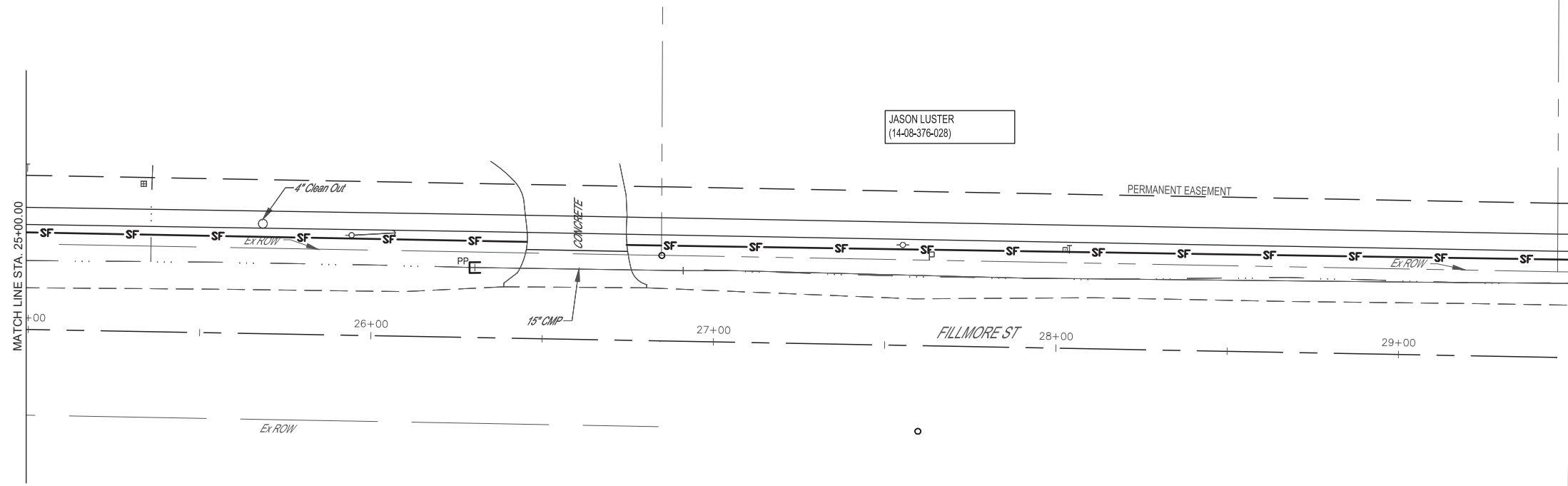
MILANO & GRUNLOH ENGINEERS, LLC
 114 W. WASHINGTON AVE. | PO BOX 887
 EFFINGHAM, IL 62401
 Phone: (217) 347-7262 | (800) 677-2714
 Email: mgeengineers@mgeengineers.com
 Web: www.mgeengineers.com
 Design Firm # 184-003108



EROSION CONTROL PLAN SHEET
 SAFE ROUTES TO SCHOOL
 19-0088-00-SW
 VANDALIA, ILLINOIS

SHEET #
20 OF 25
 JOB #
18280 BG4

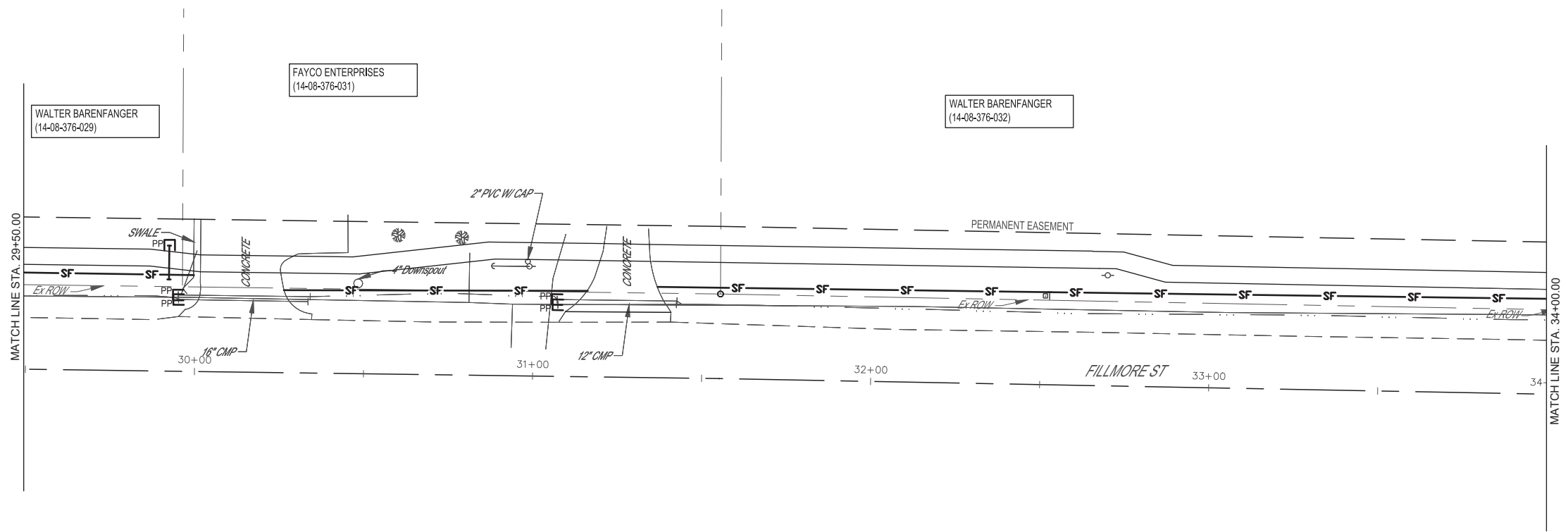
ROUTE NO.	SECTION	COUNTY	TOTAL SHEETS	SHEET NO.
S.B.I. F.A.	19-0088 00-SW	FAYETTE	25	21
FED. ROAD DIST. NO. 7		ILLINOIS	CONTRACT #95911	



LEGEND

	INLET PROTECTION
	PIPE PROTECTION
	SILT FENCE

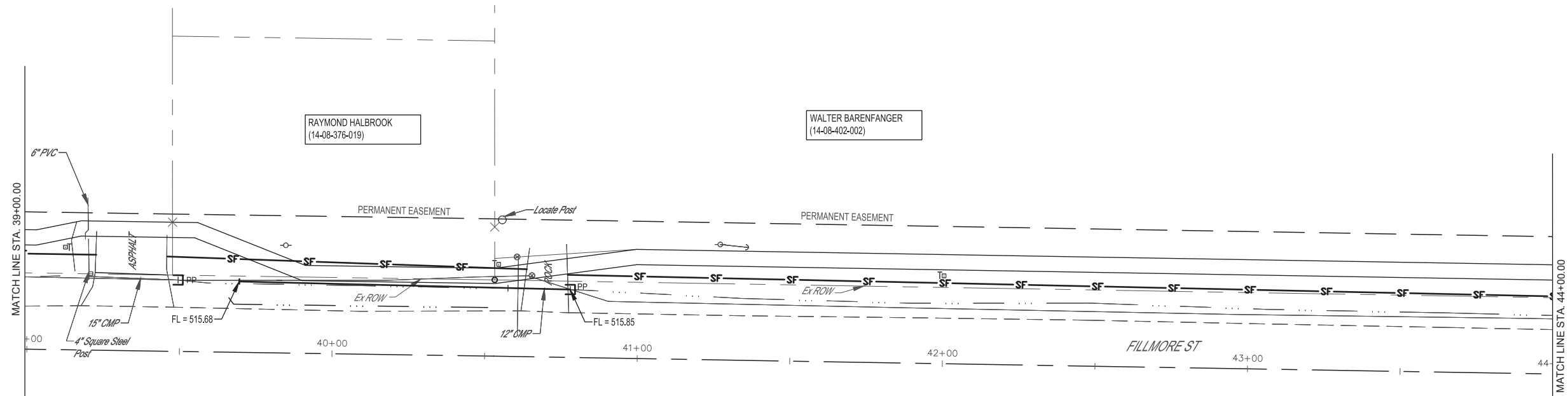
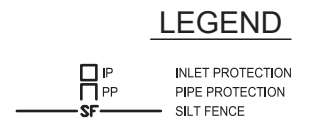
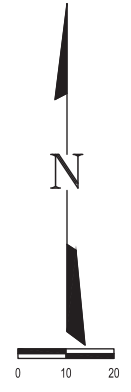
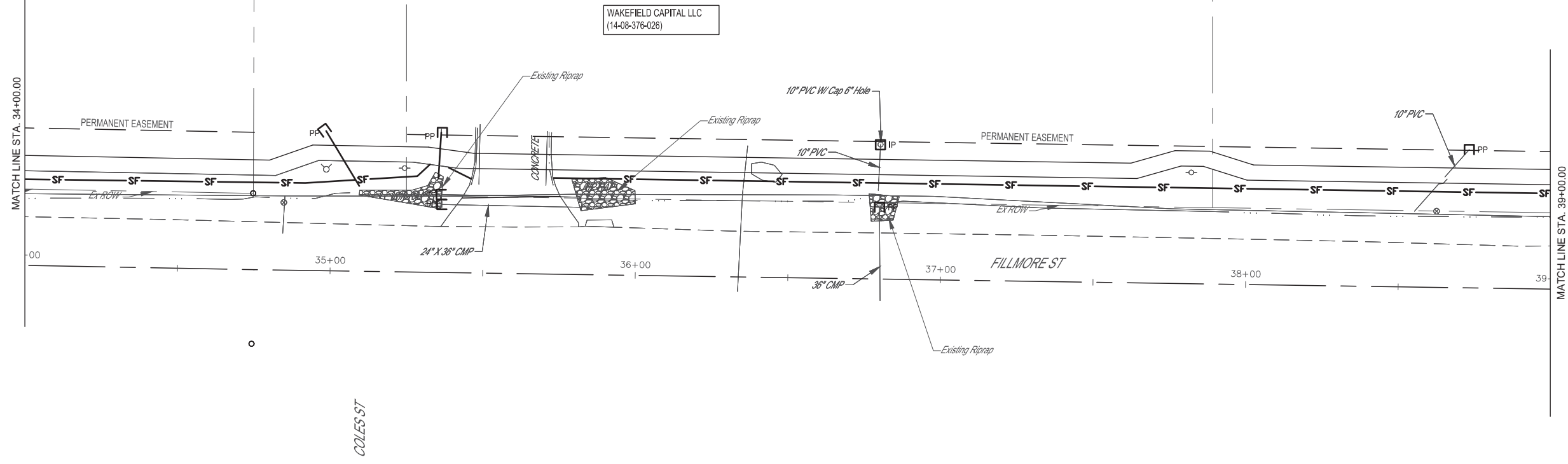
REVISION ISSUED	DATE	BY
XXX	XXXXXX	XXX
FIELD BOOK	780.788	
DRAWN BY	CMP/AJR	
CHECKED BY	MAT. AJR. MN	
FILE LOCATION	S:\2018\18280 BG4 (VANDALIA)\DWG\EROSION CONTROL.DWG	
SAVE DATE	5/27/2021 14:25	



MILANO & GRUNLOH ENGINEERS, LLC
 114 W. WASHINGTON AVE. | PO BOX 897
 EFFINGHAM, IL 62401
 Phone: (217) 347-7262 | (800) 677-2714
 Email: mgeengineers@mgeengineers.com
 Web: www.mgeengineers.com
 Design Firm # 184-003108

EROSION CONTROL PLAN SHEET
SAFE ROUTES TO SCHOOL 19-0088-00-SW VANDALIA, ILLINOIS
SHEET # 21 OF 25
JOB # 18280 BG4

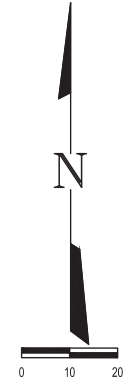
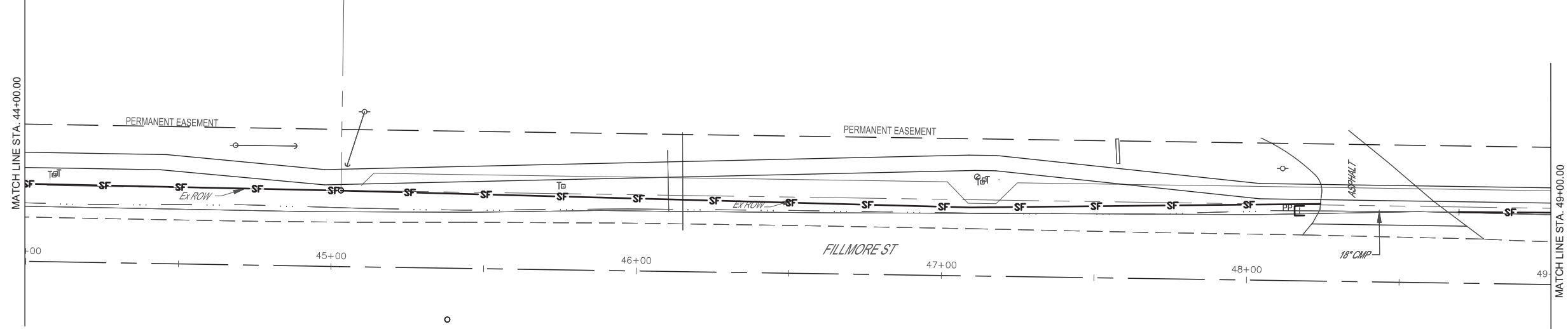
ROUTE NO.	SECTION	COUNTY	TOTAL SHEETS	SHEET NO.
S.B.I.	19-0088-00-SW	FAYETTE	25	22
F.A.				
FED. ROAD DIST. NO. 7	ILLINOIS	CONTRACT #95911		






REVISION ISSUED	DATE	BY	DESCRIPTION
	XXXXXX	XXXXXX	XXX
FIELD BOOK	780.788		
	CMP / AJR		
	CHECKED BY	MAT. AJR. MN	
	FILE LOCATION	S:\2018\18280 BG4 (VANDALIA)\DWG\EROSION CONTROL.DWG	
	SAVE DATE	5/27/2021 14:25	
<p>MILANO & GRUNLOH ENGINEERS, LLC 114 W. WASHINGTON AVE. PO BOX 887 EFFINGHAM, IL 62401 Phone: (217) 347-7262 (800) 677-2714 Email: mgenr@engr.com www.mgenr.com Design Firm # 184-003108</p>			
<p>EROSION CONTROL PLAN SHEET SAFE ROUTES TO SCHOOL 19-0088-00-SW VANDALIA, ILLINOIS</p>			
SHEET #		22 OF 25	
JOB #		18280 BG4	

ROUTE NO.	SECTION	COUNTY	TOTAL SHEETS	SHEET NO.
S.B.I. F.A.	19-0088 00-SW	FAYETTE	25	23
FED. ROAD DIST. NO. 7	ILLINOIS		CONTRACT #95911	

FIRST PRESBYTERIAN CHURCH
(14-08-427-002)



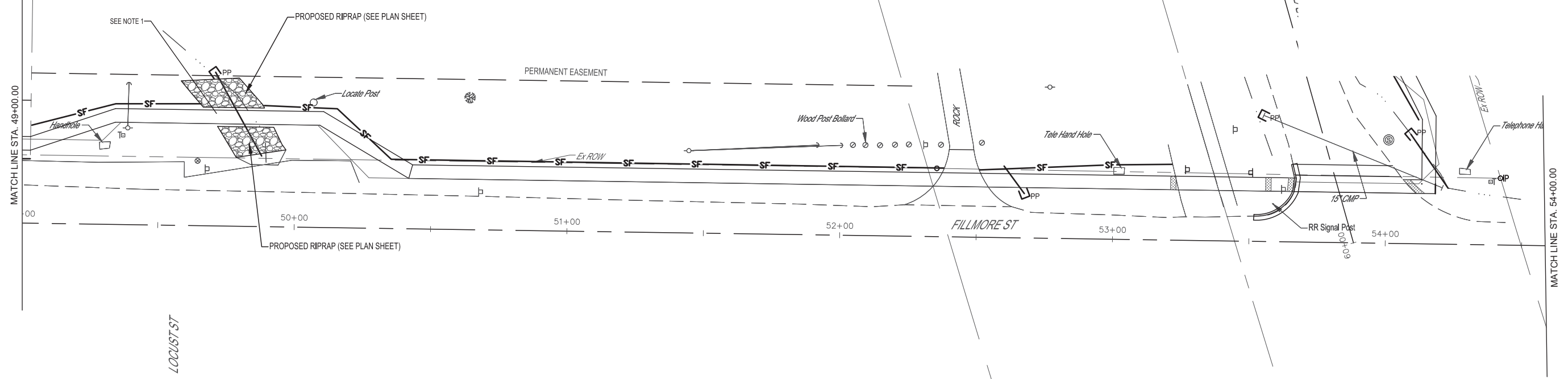
LEGEND

-  IP INLET PROTECTION
-  PP PIPE PROTECTION
-  SF SILT FENCE


REVISION ISSUED	DATE	BY
XXX	XXXXXX	XXX
FIELD BOOK	780.788	
DRAWN BY	CMP/AJR	
CHECKED BY	MAT. AJR. MN	
FILE LOCATION	S:\2018\18280 BG4 (VANDALIA)\DWG\EROSION CONTROL.DWG	
SAVE DATE	5/27/2021 14:25	

VANDALIA PARK DISTRICT
(14-08-427-003)

CITY OF VANDALIA
(14-08-427-004)

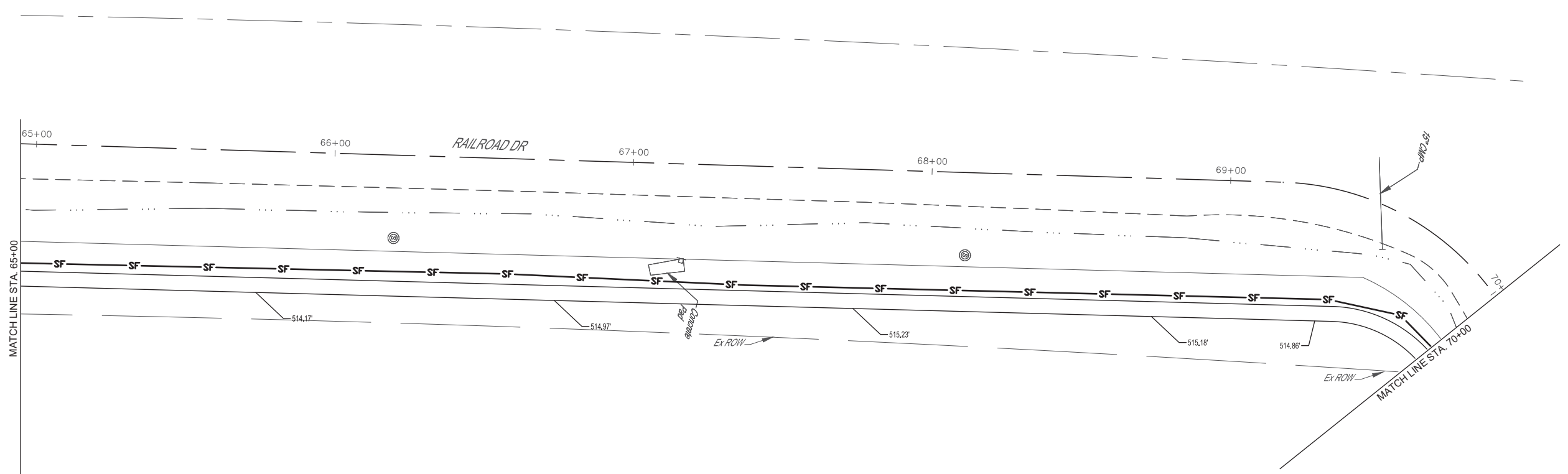
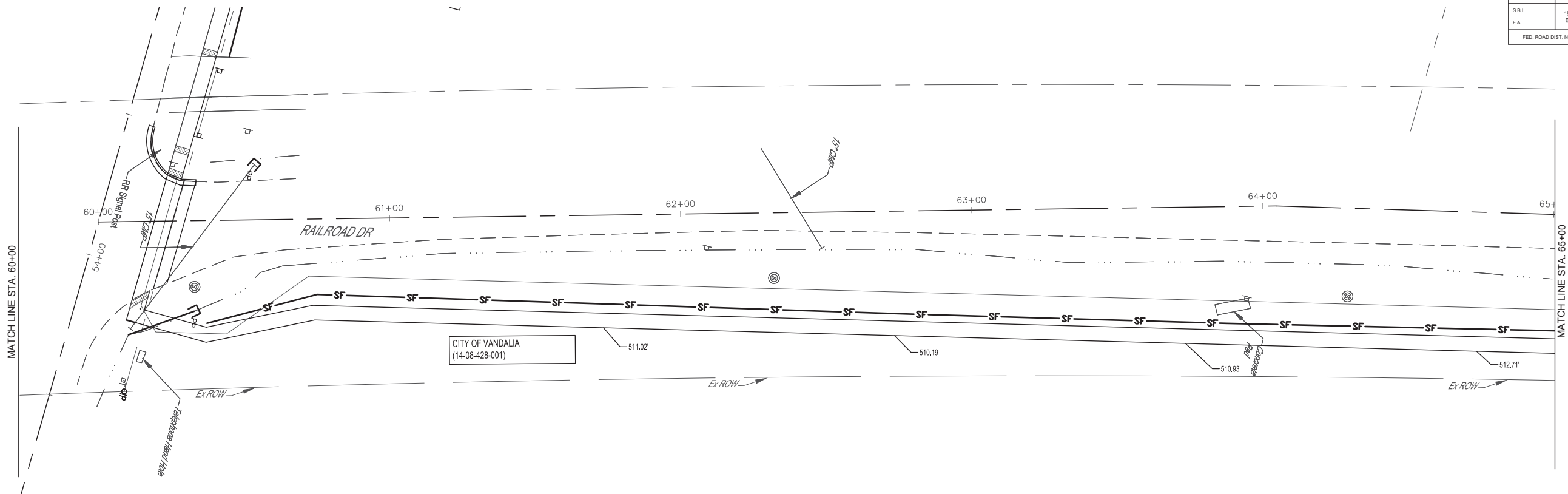


MILANO & GRUNLOH ENGINEERS, LLC
114 W. WASHINGTON AVE. | PO BOX 887
EFFINGHAM, IL 62401
Phone: (217) 347-7262 | (800) 677-2714
Email: mgenr@milanogrunloh.com
Web: www.milanogrunloh.com
Design Firm # 184-003108



EROSION CONTROL PLAN SHEET
SAFE ROUTES TO SCHOOL
19-0088-00-SW
VANDALIA, ILLINOIS

ROUTE NO.	SECTION	COUNTY	TOTAL SHEETS	SHEET NO.
S.B.I. F.A.	19-0088 00-SW	FAYETTE	25	24
FED. ROAD DIST. NO. 7	ILLINOIS		CONTRACT #99911	



LEGEND

	INLET PROTECTION
	PIPE PROTECTION
	SILT FENCE

REVISION	ISSUED	DATE	BY
XXX	XXX	XXXXXX	XXX

FIELD BOOK	780.788
DRAWN BY	CMP/AJR
CHECKED BY	MAT. AJR. MN
FILE LOCATION	S:\2018\18280 BG4 (VANDALIA)\DWG\EROSION CONTROL.DWG
SAVE DATE	5/27/2021 14:25

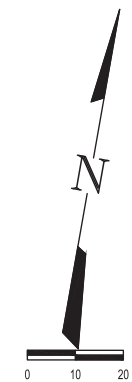
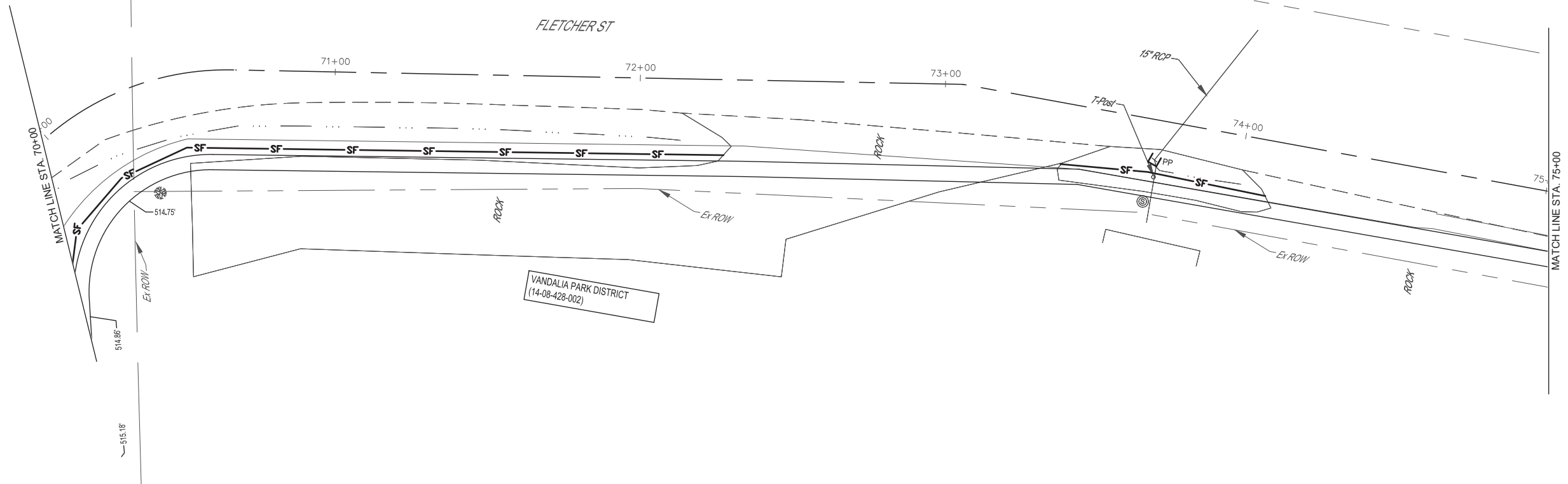
MILANO & GRUNLOH ENGINEERS, LLC
114 W. WASHINGTON AVE. | PO BOX 887
EFFINGHAM, IL 62401
Phone: (217) 347-7262 | (800) 677-2714
Email: mgeengineers@mgeengineers.com
Web: www.mgeengineers.com
Design Firm # 184-003108

EROSION CONTROL PLAN SHEET
SAFE ROUTES TO SCHOOL
19-0088-00-SW
VANDALIA, ILLINOIS




SHEET #
24 OF 25

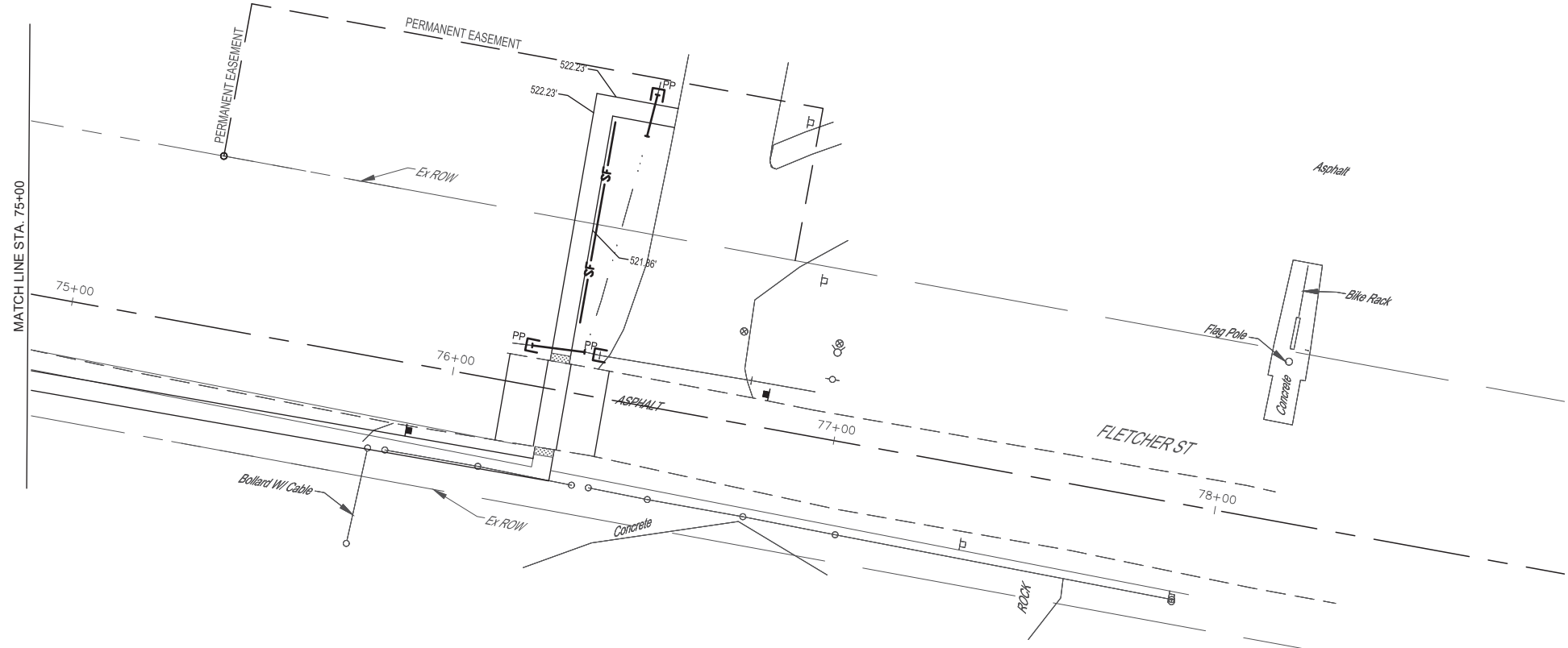
JOB #
18280 BG4

ROUTE NO.	SECTION	COUNTY	TOTAL SHEETS	SHEET NO.
S.B.I. F.A.	19-0088 00-SW	FAYETTE	25	25
FED. ROAD DIST. NO. 7		ILLINOIS	CONTRACT #95911	



LEGEND

-  INLET PROTECTION
-  PIPE PROTECTION
-  SILT FENCE



REVISION	ISSUED	DATE	BY
		XXXXXX	XXX
FIELD BOOK	780.788	DRAWN BY	CWP/AJR
CHECKED BY	MAT. AJR. MN	FILE LOCATION	S:\2018\18280 BG4 (VANDALIA)\DWG\EROSION CONTROL.DWG
SAVE DATE	5/27/2021 14:25		

MILANO & GRUNLOH ENGINEERS, LLC
 114 W. WASHINGTON AVE. | PO BOX 887
 EFFINGHAM, IL 62401
 Phone: (217) 347-7262 | (800) 677-2714
 Email: mgeengineers@mgeengineers.com
 Web: www.mgeengineers.com
 Design Firm # 184-003108



EROSION CONTROL PLAN SHEET
 SAFE ROUTES TO SCHOOL
 19-0088-00-SW
 VANDALIA, ILLINOIS

SHEET #
25 OF 25
 JOB #
18280 BG4