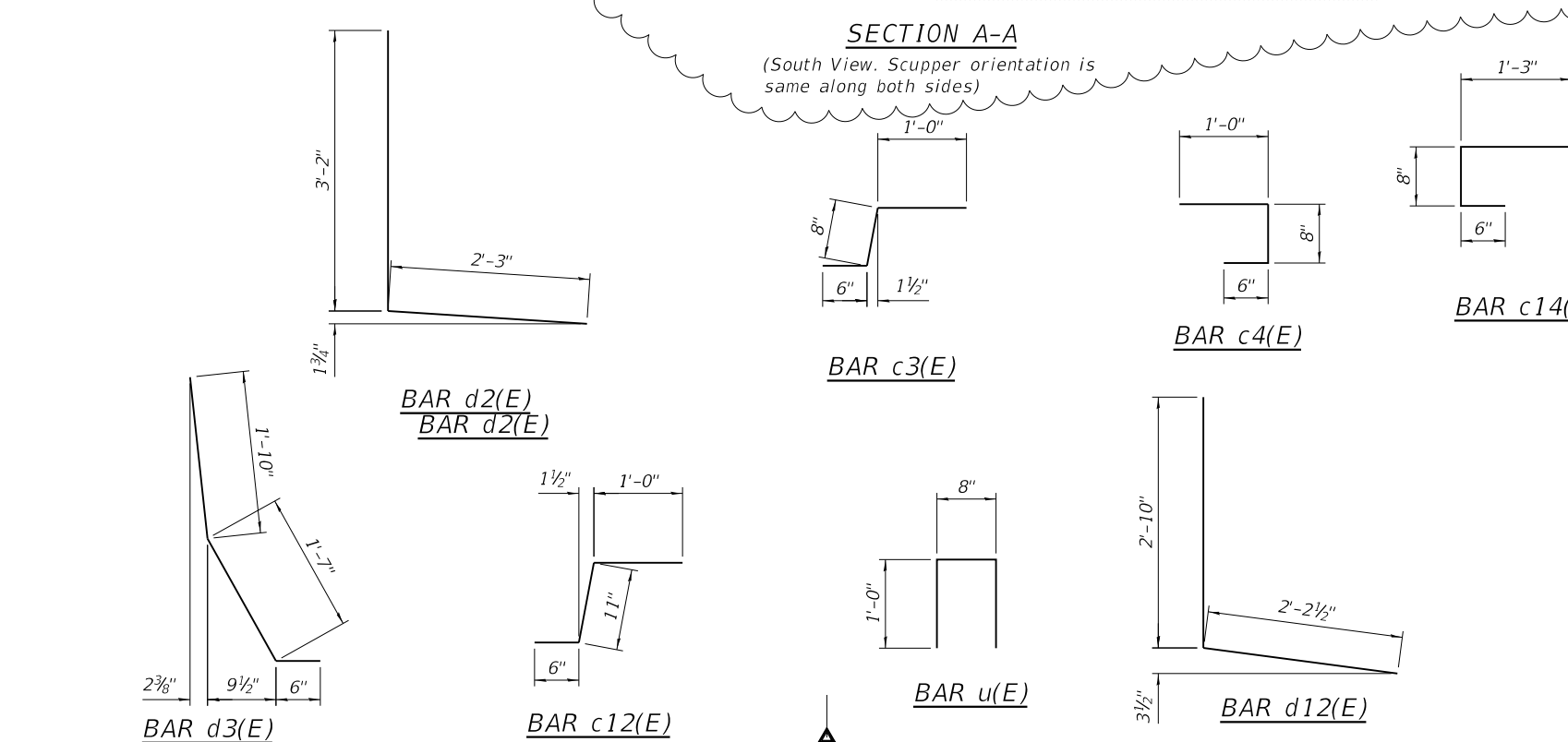
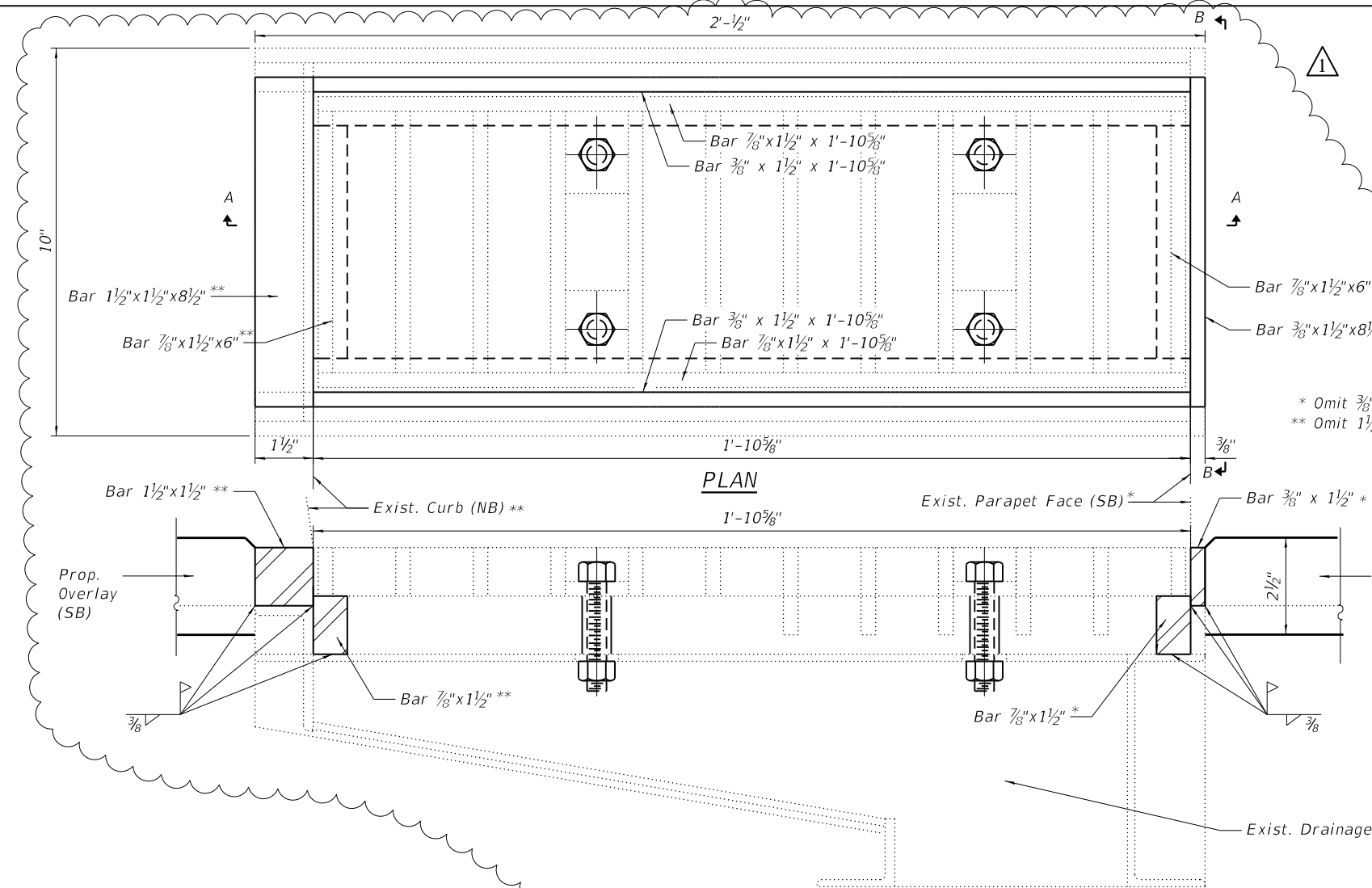


MODEL: \$MODELNAME\$
 FILE NAME: C:\Users\jpush\OneDrive - QEI\QDoc\Consult\Projects\2316_IDOT_PTB_207-023_Var-Var-Bridge\400-Work\Work Order 2\410-CADD\052-0062\Sheets\5-08-Abutment Concrete Superstructure Details IL.dgn
 9/5/2024 2:50:24 PM



NOTES

All structural steel shall conform to AASHTO Classification M-270 Grade 36.

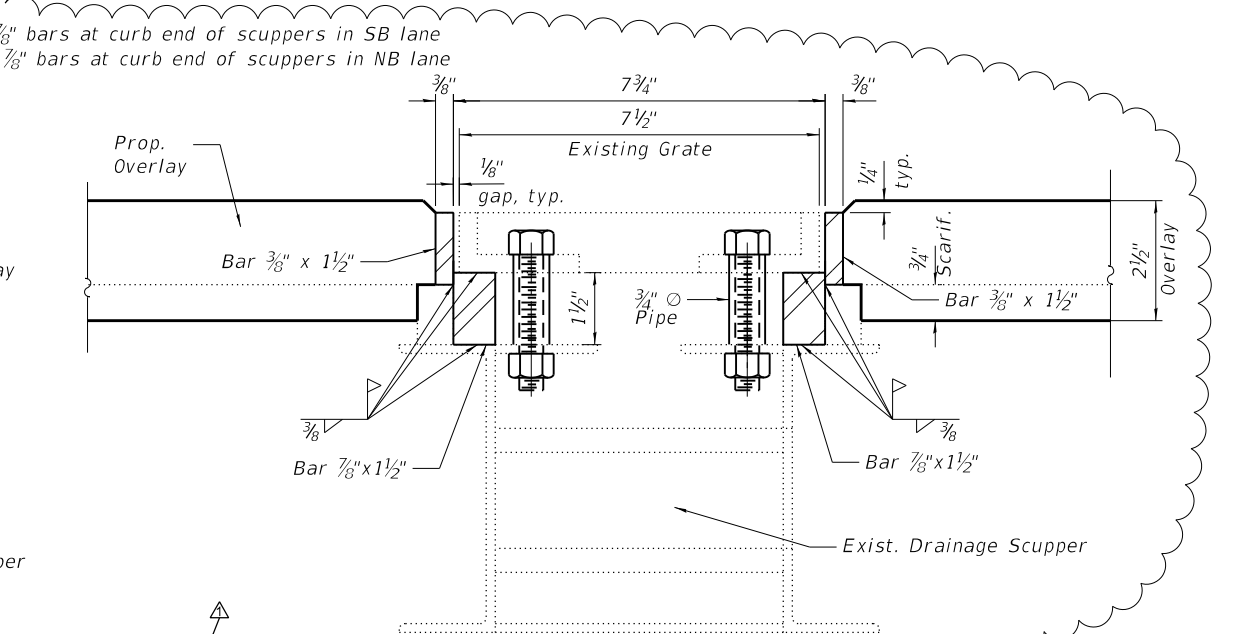
Bolts shall be 1/2" O AASHTO M164 Type 1, mechanically galvanized. The adjusting scupper ring and 3/4" O pipe sleeve spacers shall be hot dip galvanized.

Plan dimensions and details relative to existing plans are subject to nominal construction variations. The contractor shall field verify existing dimensions and details affecting new construction and make necessary approved adjustments prior to construction or ordering of materials, such variations shall not be cause for additional compensation for a change in scope of the work, however, the contractor will be paid for the quantity actually furnished based at the unit price bid for the work.

The contractor shall ensure that no damage is done to existing grates to be reused.

Shop plans for proposed adjusting scupper ring shall be submitted for approval prior to fabrication.

Cost of all labor and materials necessary to remove existing greats, clean scuppers, install adjusting scupper rings and reinstall grates is included in the cost per unit each for drainage scuppers to be adjusted.



BILL OF MATERIAL

Bar	No.	Size	Length	Shape
a3(E)	6	#6	4'-0"	—
a5(E)	8	#7	42'-6"	—
a14(E)	8	#7	47'-3"	—
c3(E)	16	#5	2'-2"	┌
c4(E)	8	#5	2'-2"	└
c11(E)	6	#5	5'-8"	—
c12(E)	8	#5	2'-5"	┌
c14(E)	8	#5	2'-5"	└
d2(E)	6	#4	5'-5"	L
d3(E)	6	#5	3'-11"	\
d12(E)	6	#4	5'-1"	L
d13(E)	6	#5	3'-9"	L
h(E)	8	#6	38'-0"	—
h1(E)	8	#6	43'-0"	—
u(E)	174	#5	2'-8"	Π
Concrete Superstructure		Cu. Yd.	20.1	
Reinforcement Bars, Epoxy Coated		Pound	3,155	
Drainage Scuppers to be Adjusted		Each	4	

	USER NAME =	DESIGNED - BMW	REVISED - 09/05/2024	STATE OF ILLINOIS DEPARTMENT OF TRANSPORTATION	ABUTMENT CONCRETE REMOVAL DETAILS & SCUPPER ADJUSTMENT IL 26 OVER UP RR - S.N. 052-0062	F.A.P. RTE. = 316	SECTION = 101(V-BR & R-2)BDR	COUNTY = LEE	TOTAL SHEETS = 38	SHEET NO. = 22
	PLOT SCALE =	DRAWN - BMW	REVISOR =			SHEET 8 OF 14 SHEETS				
PLOT DATE =		CHECKED - JRT	REVISOR =	ILLINOIS FED. AID PROJECT						