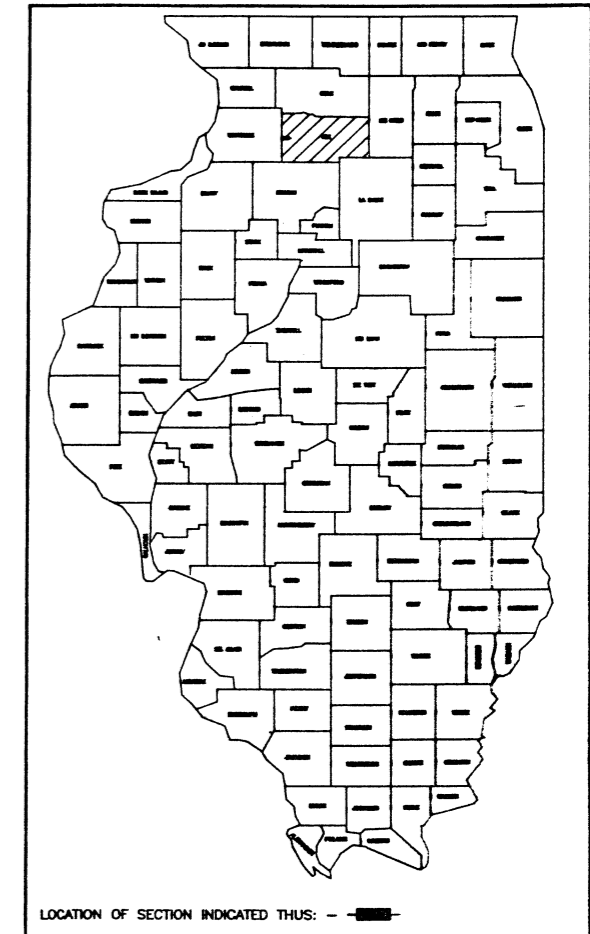


STATE OF ILLINOIS  
 DEPARTMENT OF TRANSPORTATION  
 DIVISION OF HIGHWAYS  
 PLANS FOR PROPOSED  
 FEDERAL AID HIGHWAY

FA RTE	SECTION	COUNTY	TOTAL SHEETS
573	111VBR	LEE	40

D-92-057-89

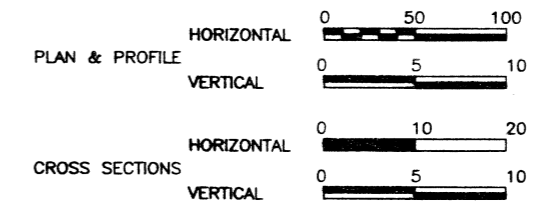


LOCATION OF SECTION INDICATED THUS: - - -

FA ROUTE 573 ( US 30 )  
 SECTION 111VBR  
 PROJECT BHF-573 (25)  
 LEE COUNTY

C-92-071-91

R. 8 E.



SECTION 111VBR INCLUDES:  
 THE REMOVAL OF THE EXISTING SUPERSTRUCTURE  
 AND REPLACING WITH A THREE SPAN CONTINUOUS  
 STEEL BEAM BRIDGE. ROUTE 573 (US 30) AT  
 C&NW RAILROAD, AND OTHER APPROACH WORK.

INDEX OF SHEETS

- COVER SHEET
  - INDEX OF SHEETS
  - SUMMARY OF QUANTITIES
  - GENERAL NOTES
  - TYPICAL SECTIONS
  - DETAILS
  - SCHEDULE OF QUANTITIES
  - PLAN AND PROFILE
  - BITUMINOUS CONCRETE SHOULDER CURB (10.4), LAND SECTION MARKER (63.4)
  - TYPICAL PAVEMENT MARKINGS (40.1)
  - DETAIL OF PLANTING AND BRACING TREES (92.1)
  - GUARDRAIL REFLECTORS (88.2)
  - STOP LINE SIGN FOR TEMP. SIGNAL (99.4), TREE REPLACEMENT SCHEDULE (90.4)
  - EXISTING STRUCTURE GENERAL PLAN
- 12-31 BRIDGE PLANS  
 32-40 CROSS SECTIONS

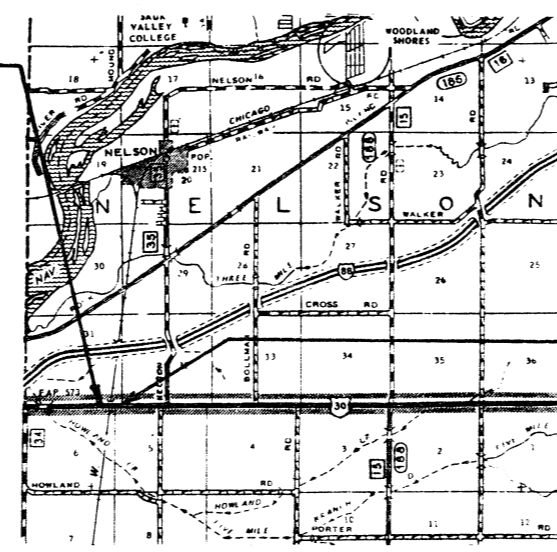
STANDARDS

- 1744-5 RIGHT-OF-WAY MARKERS  
 2113-2 NAME PLATE  
 2135 PERMANENT SURVEY MARKERS  
 2228-4 METAL END SECTION FOR PIPE CULVERTS  
 2230-16 STEEL PLATE BEAM GUARDRAIL, TYPE A  
 2298-9 TYPICAL APPLICATION OF TRAFFIC CONTROL DEVICES  
 2299-13 DESIGN OF TRAFFIC CONTROL DEVICES  
 2300-3 FLAGGER TRAFFIC CONTROL SIGN  
 2303-7 TYPICAL APPLICATION OF TRAFFIC CONTROL DEVICES  
 2305-6 TYPICAL APPLICATION OF TRAFFIC CONTROL DEVICES  
 2306-7 TYPICAL APPLICATION OF TRAFFIC CONTROL DEVICES  
 2307-7 TYPICAL APPLICATION OF TRAFFIC CONTROL DEVICES  
 2308-6 TYPICAL APPLICATION OF TRAFFIC CONTROL DEVICES  
 2311-9 TYPICAL APPLICATION OF TRAFFIC CONTROL DEVICES  
 2323-12 PAVEMENT JOINTS
- 2336-4 TRAFFIC BARRIER TERMINAL, TYPE 1  
 2341-5 TRAFFIC BARRIER TERMINAL, TYPE 6
- 2370-1 DETAILS OF DETECTOR INSTALLATIONS  
 2381 TEMPORARY EROSION CONTROL SYSTEMS  
 2383-3 TEMPORARY CONCRETE BARRIER  
 2394 TYPICAL LAYOUT FOR DETECTOR LOOPS  
 2409-1 TYPICAL APPLICATION OF TRAFFIC CONTROL DEVICES, TWO LANE  
 2442-1 BRIDGE APPROACH PAVEMENT  
 2441 PCC/BITUMINOUS STABILIZATION AT STEEL PLATE BEAM GUARDRAIL  
 2322-4 SHOULDER INLET WITH CURB  
 2427-1 CLASS C AND D PATCHES  
 2443-1 BRIDGE APPROACH PAVEMENT (DRAIN DETAIL)



DESIGN DESIGNATION  
 560(14) AREA SERVICE 3.81(B-20)

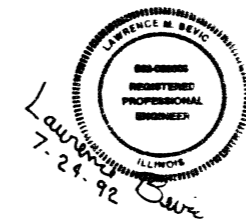
SECTION 111VBR  
 ENDS STA. 1461+39



LOCATION MAP  
 SCALE 0 1 2 MILES

SECTION 111VBR  
 BEGINS STA. 1436+62

NET LENGTH OF SECTION = 2477 LIN FT = 0.469 MILE



STATE OF ILLINOIS  
 DEPARTMENT OF TRANSPORTATION  
 DIVISION OF HIGHWAYS

SUBMITTED September 17, 1992  
 EXAMINED \_\_\_\_\_ 19\_\_\_\_  
 PASSED March 12, 1993  
 APPROVED March 12, 1993

DISTRICT 2  
 DIXON

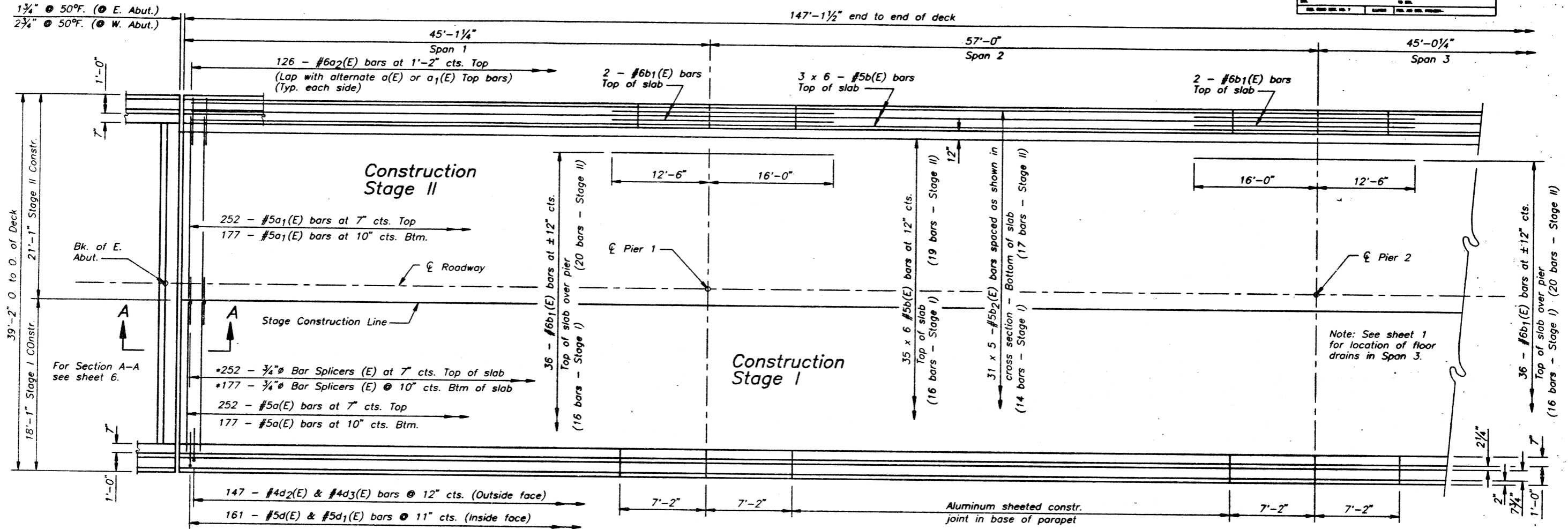
CONTRACT NO. 84431

"CALL J.U.L.I.E.  
 BEFORE YOU DIG"  
 800-892-0123  
 NELSON TOWNSHIP  
 SECTION 31  
 HARMON TOWNSHIP  
 SECTION 6

S.N. 052-0031

BARRIENTOS & ASSOC., INC. PROJECT LEADER PROJECT ENGINEER: BOB WAGNER (815) 294-5356

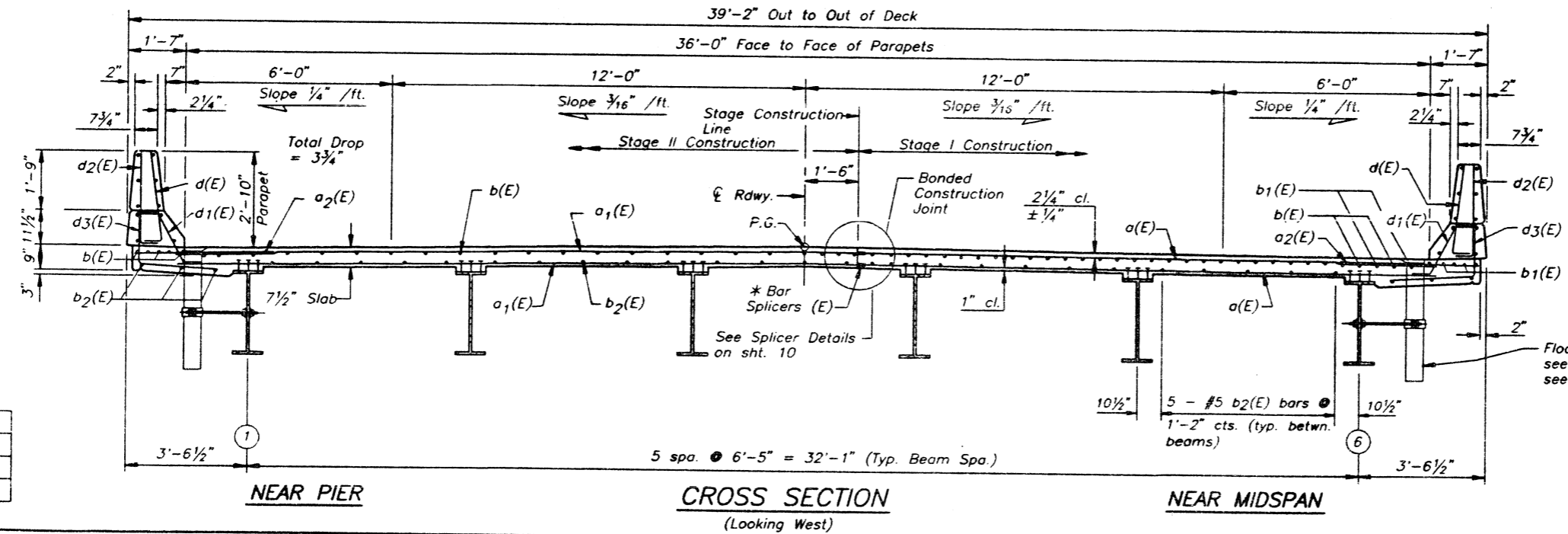




**PARTIAL PLAN**

\* Bar Splicers (E) shall be tied with double the number of ties normally used.

**Minimum Bar Lap**  
#5 = 2'-2"



**NEAR PIER**

**CROSS SECTION**  
(Looking West)

**NEAR MIDSPAN**

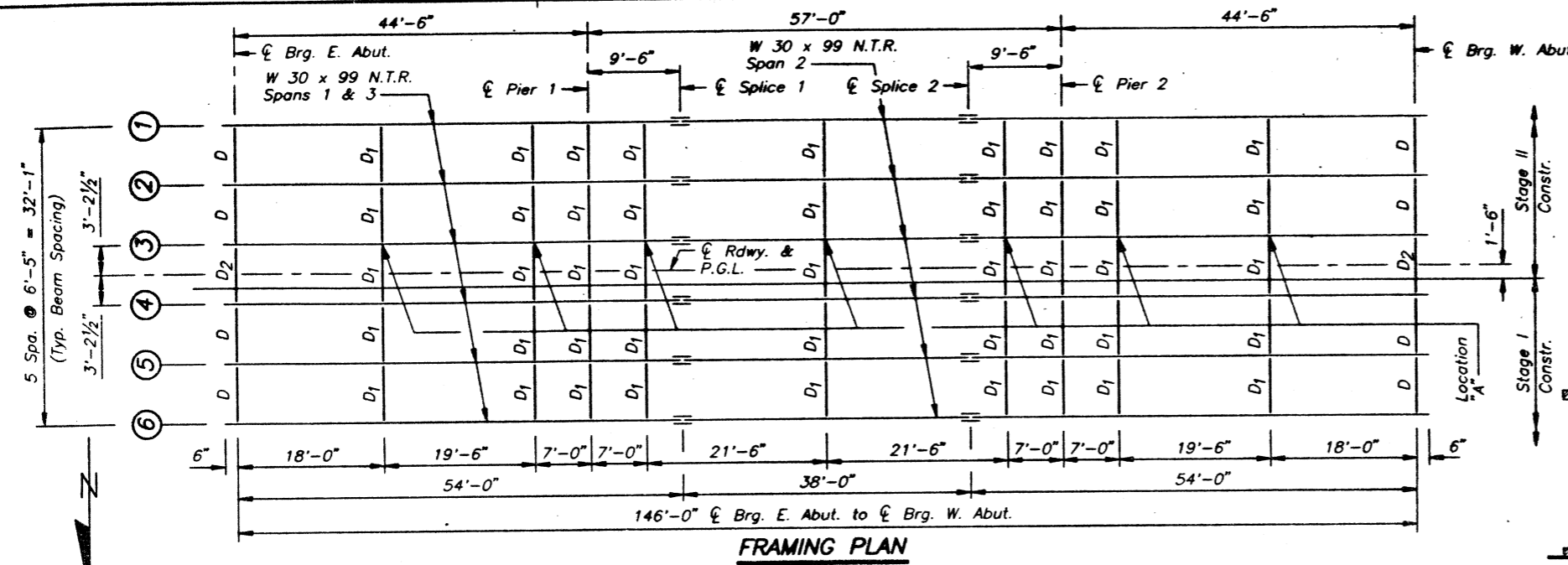
Notes: See sheet #7 for superstructure details and Bill of Material.  
Reinforcement bars designated (E) shall be epoxy coated.  
Bars indicated thus 20 x 3 - #5 etc. indicates 20 lines of bars with 3 lengths per line.

Floor Drains - for details, see sheet 6, for location, see sheet 1.

DESIGNED W.L.O.  
CHECKED T.A.Z.  
DRAWN T.L.  
CHECKED W.L.O.

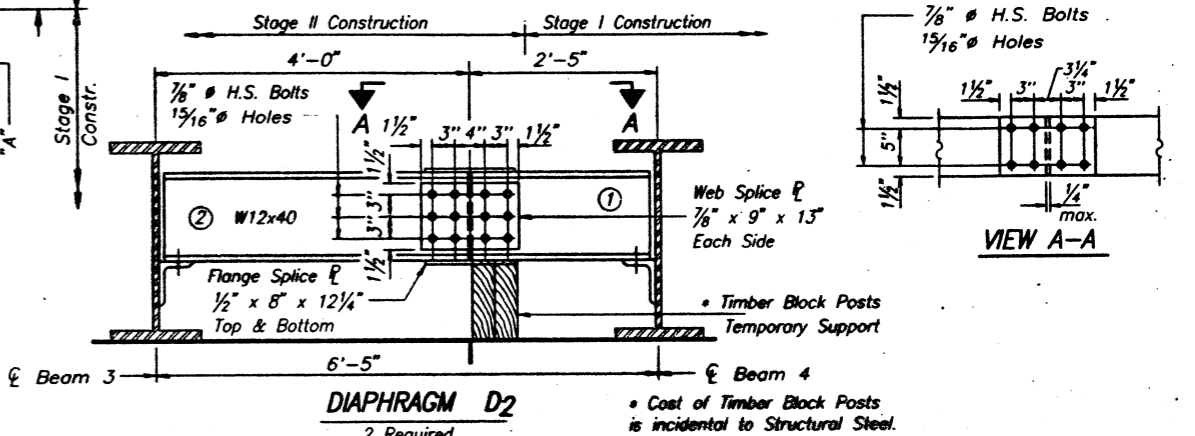
**SUPERSTRUCTURE**  
F.A. ROUTE 573 (U.S. ROUTE 30) OVER  
C & NW RR  
SECTION 111VBR LEE COUNTY  
STA. 1446+48.00  
STRUCTURE NO. SN 052-0031



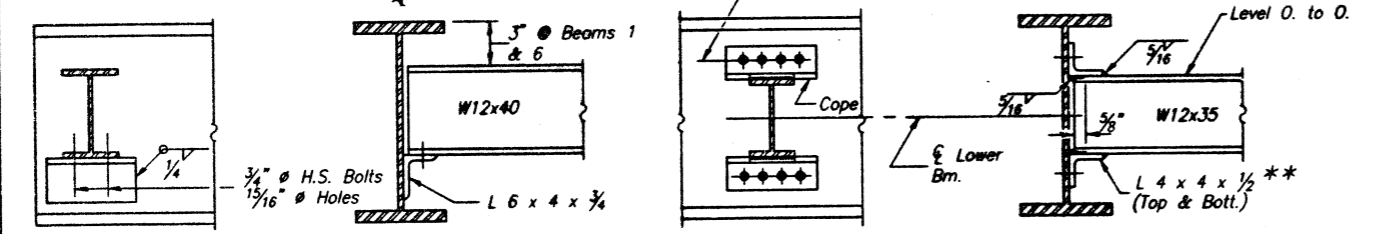


**DIAPHRAGM D<sub>2</sub> CONSTRUCTION SEQUENCE**

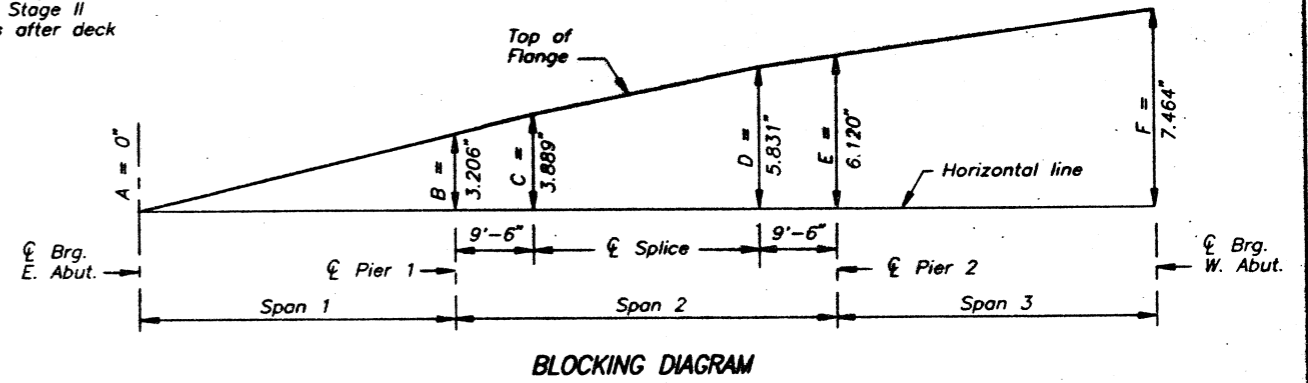
- 1.) Order diaphragm D<sub>2</sub> in two lengths as shown.
- 2.) Attach section ① of Diaphragm to Beam 4 and top flange splice during Stage I Construction
- 3.) Place Timber Block Posts between section ① of diaphragm and abutment bearing seat.
- 4.) Attach section ② of diaphragm to both Beam 3 and section ① of diaphragm during Stage II Construction.
- 5.) Attach all remaining splice plates to sections ① and ② of diaphragms.
- 6.) Remove Timber Block Posts.



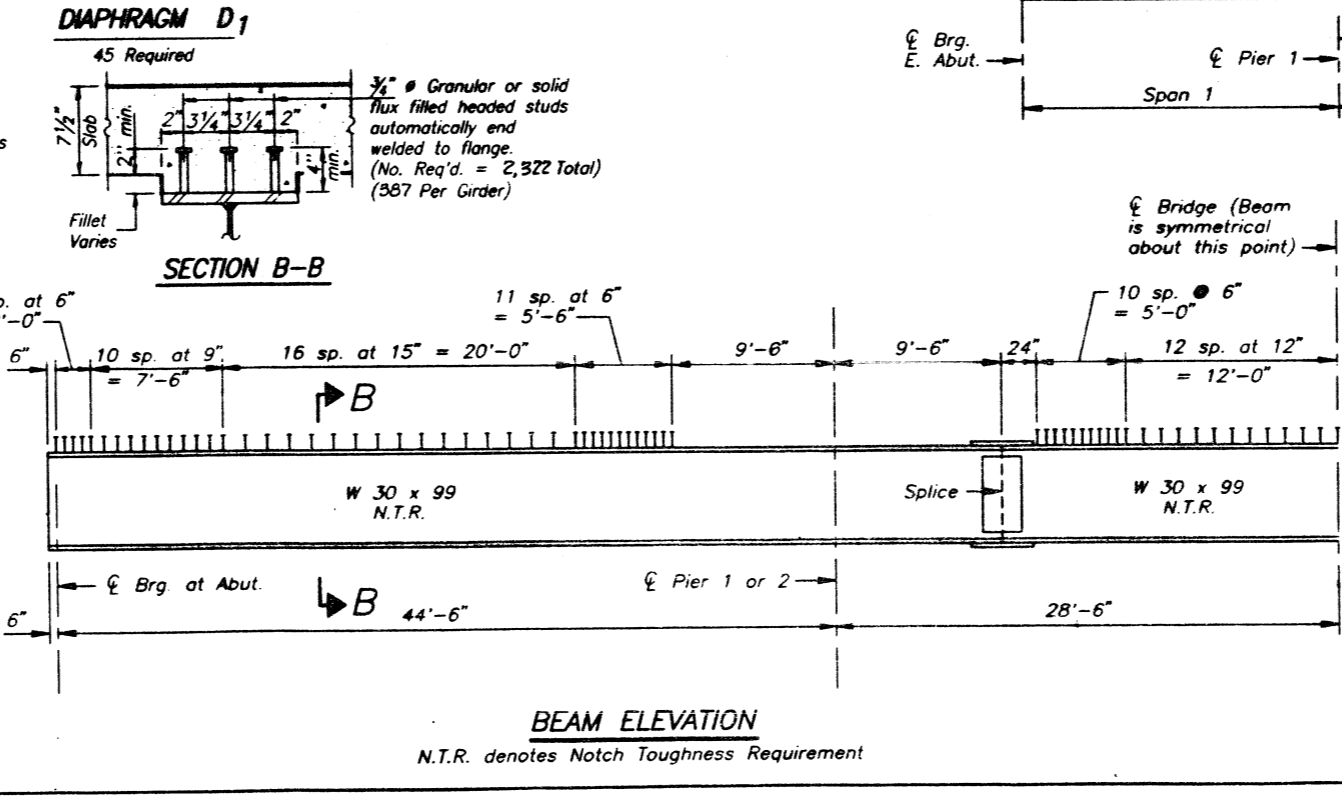
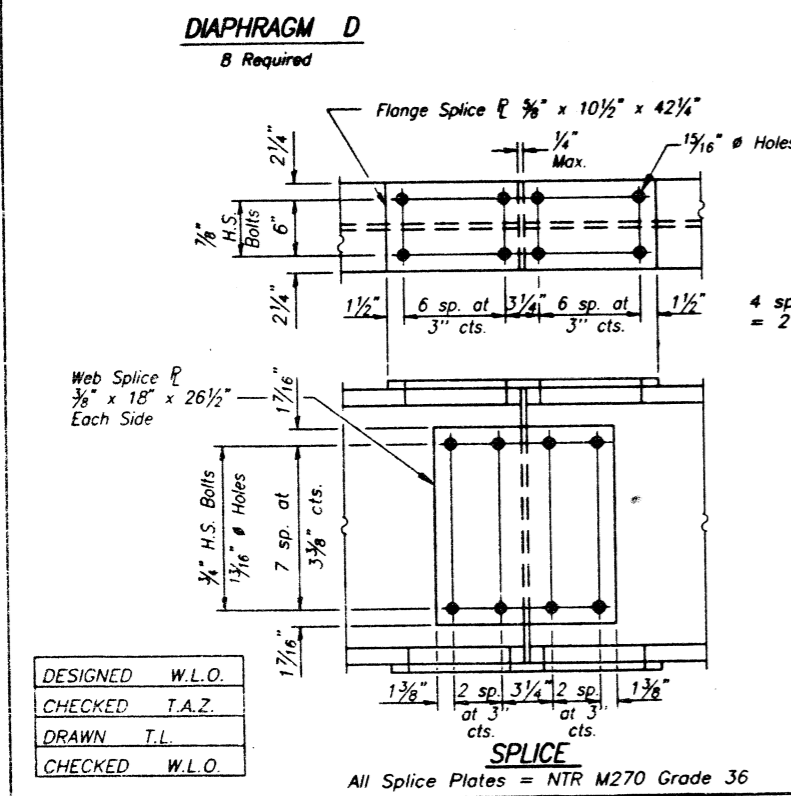
Note: Two hardened washers shall be required over all 1 5/16" Holes  
All contact surfaces of joints shall be free of paint or lacquer.



\*\* Use 1 3/16" x 1 1/2" slotted holes in L 4 x 4 x 1/2 at Location "A" only. Provide 5/16" plate washers for slotted holes. Bolts shall be finger tightened prior to the deck pour for Stage II Construction. Tighten bolts after deck is poured.

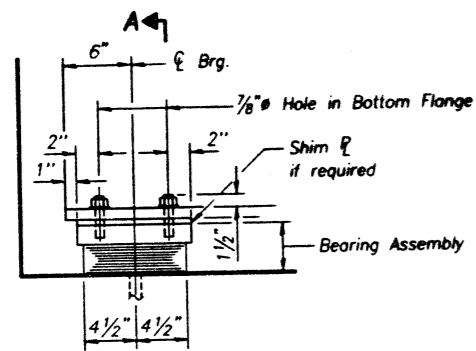


Note: See sheet 3 of 20 for Beam Stress Table and Top of Beam Flange Elevations.

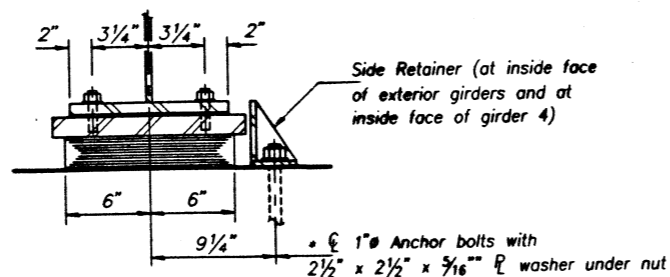


STRUCTURAL STEEL  
F.A. ROUTE 573 (U.S. ROUTE 30) OVER  
C & NW RR  
SECTION 111VBR LEE COUNTY  
STA. 1446+48.00  
STRUCTURE NO. SN 052-0031

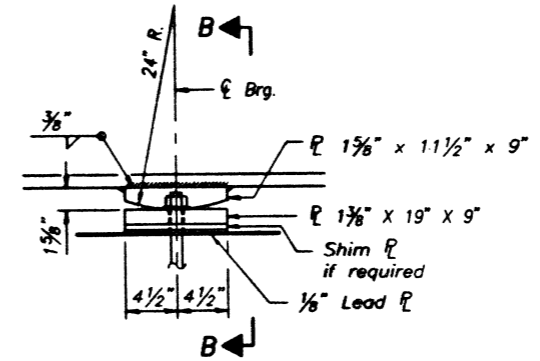
DESIGNED	W.L.O.
CHECKED	T.A.Z.
DRAWN	T.L.
CHECKED	W.L.O.



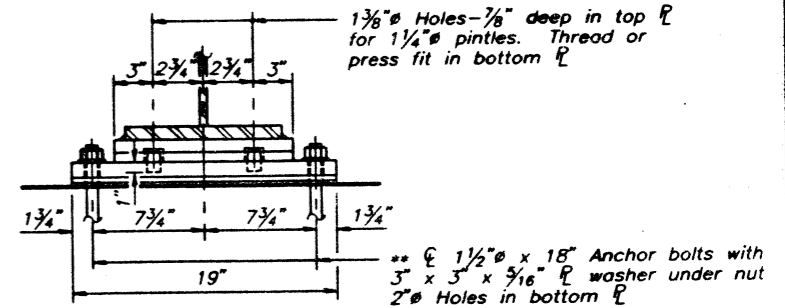
**ELEVATION AT ABUT.**



**SECTION A-A**

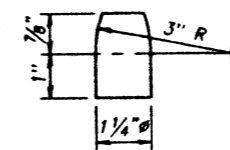


**ELEVATION AT PIER**



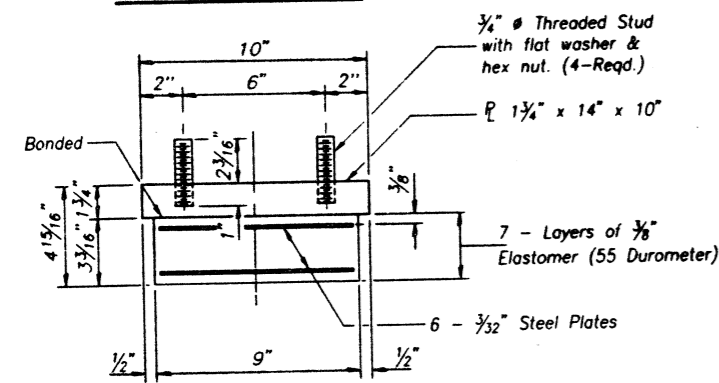
**SECTION B-B**

**FIXED BEARING AT PIER 1**  
(6 Req'd.)



**PINTLE**

\*\* Notes: Anchor bolts at fixed bearings may be built into the masonry. See sheet #9 for Anchor Bolt details.

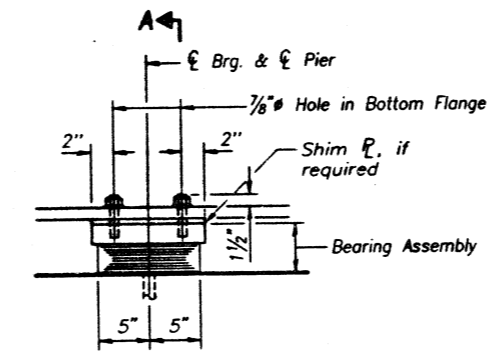


**BEARING ASSEMBLY**

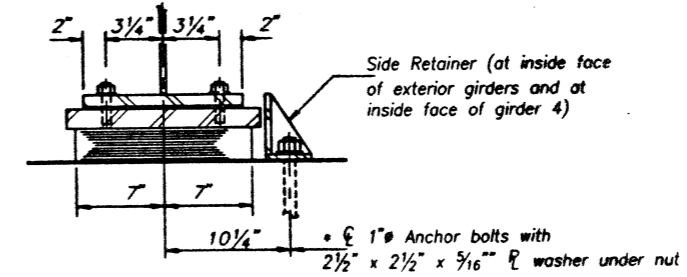
Note: Shim plates shall not be placed under Bearing Assembly.

\* Note: After beams have been erected holes at expansion bearings shall be drilled and anchor bolts grouted in place. See sheet #9 for Anchor Bolt details.

**TYPE I ELASTOMERIC EXP. BRG. AT EAST & WEST ABUTMENT**  
(12 Req'd.)

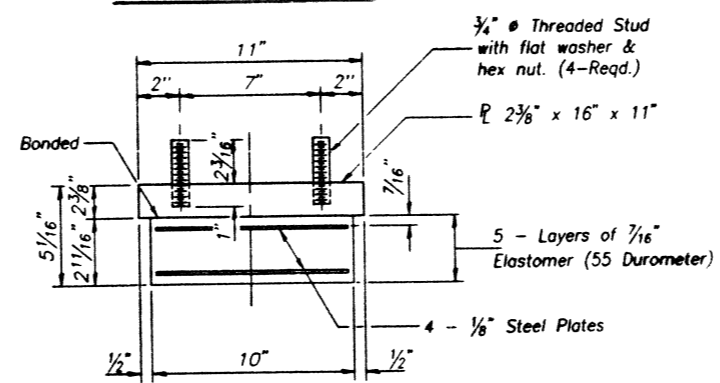


**ELEVATION AT PIER 2**



**SECTION A-A**

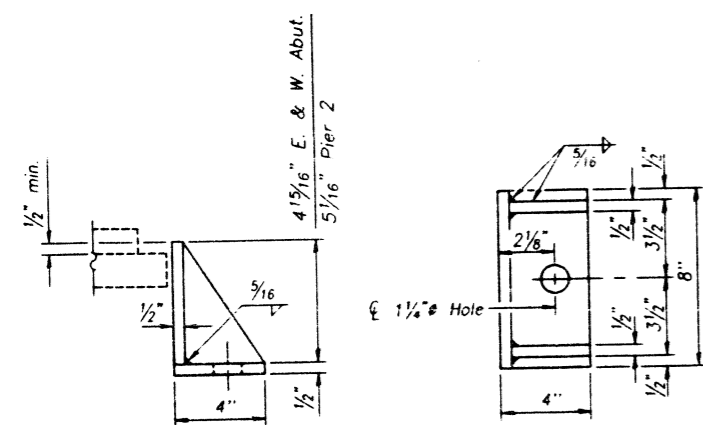
\* Note: After beams have been erected holes at expansion bearings shall be drilled and anchor bolts grouted in place. See sheet #9 for Anchor Bolt details.



**BEARING ASSEMBLY**

Note: Shim plates shall not be placed under Bearing Assembly.

**TYPE I ELASTOMERIC EXP. BRG. AT PIER 2**  
(6 Req'd.)



**SIDE RETAINER**

Equivalent rolled angle with stiffeners will be allowed in lieu of welded plates. (9 Req'd.)

**BILL OF MATERIAL**

Item	Unit	Total
Elastomeric Bearing Assembly Type 1 @ E. & W. Abut.	Each	12
Elastomeric Bearing Assembly Type 1 @ Pier 2	Each	6

DESIGNED	W.L.O.
CHECKED	T.A.Z.
DRAWN	T.L.
CHECKED	W.L.O.

**ELASTOMERIC BEARING ASSEMBLY TYPE 1**  
F.A. ROUTE 573 (U.S. ROUTE 30) OVER  
C & NW RR  
SECTION 111VBR LEE COUNTY  
STA. 1446+48.00  
STRUCTURE NO. SN 052-0031