

CODE NO.	ITEM	UNIT	TOTAL QUANTITY	CONSTRUCTION CODE				
				80% FED / 20% LOCAL	80% FED / 20% LOCAL	80% FED / 20% LOCAL	80% FED / 20% LOCAL	80% FED / 20% LOCAL
				ROADWAY	TRAFFIC SIGNALS	BICYCLE PATH	LIGHTING	TRAINEES
				0005	0021	0028	0021	0042
				URBAN	URBAN	URBAN	URBAN	URBAN
* 84200804	REMOVAL OF POLE FOUNDATION	EACH	1				1	
* 84400105	RELOCATE EXISTING LIGHTING UNIT	EACH	1				1	
* 85000200	MAINTENANCE OF EXISTING TRAFFIC SIGNAL INSTALLATION	EACH	2		2			
* 85100100	PAINT EXISTING TRAFFIC SIGNAL EQUIPMENT	EACH	1		1			
* 85100500	PAINT NEW TRAFFIC SIGNAL POST	EACH	14		14			
* 85100600	PAINT NEW MAST ARM AND POLE, UNDER 40 FOOT	EACH	2		2			
* 87301215	ELECTRIC CABLE IN CONDUIT, SIGNAL NO. 14 2C	FOOT	1,698		1698			
* 87301225	ELECTRIC CABLE IN CONDUIT, SIGNAL NO. 14 3C	FOOT	2,359		2359			
* 87301245	ELECTRIC CABLE IN CONDUIT, SIGNAL NO. 14 5C	FOOT	1,923		1923			
* 87301255	ELECTRIC CABLE IN CONDUIT, SIGNAL NO. 14 7C	FOOT	655		655			
* 87301305	ELECTRIC CABLE IN CONDUIT, LEAD-IN, NO. 14 1 PAIR	FOOT	580		580			
* 87301805	ELECTRIC CABLE IN CONDUIT, SERVICE, NO. 6 2 C	FOOT	68		68			
* 87301900	ELECTRIC CABLE IN CONDUIT, EQUIPMENT GROUNDING CONDUCTOR, NO. 6 1C	FOOT	34		34			
* 87502500	TRAFFIC SIGNAL POST, GALVANIZED STEEL 16 FT.	EACH	5		5			
* 87700300	STEEL MAST ARM ASSEMBLY AND POLE, 52 FT.	EACH	1		1			

• DENOTES SPECIALTY ITEMS

△ REVISED - 09/04/2024

MODEL: D:\ep\j... FILE NAME: P:\proj\20240319\DESIGN\CHITWORKING\Sheet2126\_SHT\_COARBLE.dgn



DESIGNED -	JRK	REVISED -	09/04/2024
DRAWN -	CC	REVISED -	
CHECKED -	JGC	REVISED -	
DATE -	09/04/2024	REVISED -	

**STATE OF ILLINOIS  
DEPARTMENT OF TRANSPORTATION**

SUMMARY OF QUANTITIES				
SCALE:	SHEET	OF	SHEETS	STA. TO STA.

F.A.U. RTE.	SECTION	COUNTY	TOTAL SHEETS	SHEET NO.
2760	22-00183-00-BT	COOK	182	11
CONTRACT NO. 61K70				
ILLINOIS FED. AID PROJECT				

CODE NO.	ITEM	UNIT	TOTAL QUANTITY	CONSTRUCTION CODE					
				80% FED / 20% LOCAL	80% FED / 20% LOCAL	80% FED / 20% LOCAL	80% FED / 20% LOCAL	80% FED / 20% LOCAL	
				ROADWAY	TRAFFIC SIGNALS	BICYCLE PATH	LIGHTING	TRAINEES	
				0005	0021	0028	0021	0042	
				URBAN	URBAN	URBAN	URBAN	URBAN	
* 87800100	CONCRETE FOUNDATION, TYPE A	FOOT	20		20				
* 87800150	CONCRETE FOUNDATION, TYPE C	FOOT	4		4				
* 87800415	CONCRETE FOUNDATION, TYPE E 36-INCH DIAMETER	FOOT	28		28				
* 87900200	DRILL EXISTING HANDHOLE	EACH	11		11				
* 88030020	SIGNAL HEAD, LED, 1-FACE, 3-SECTION, MAST-ARM MOUNTED	EACH	6		6				
* 88030050	SIGNAL HEAD, LED, 1-FACE, 3-SECTION, BRACKET MOUNTED	EACH	5		5				
* 88030100	SIGNAL HEAD, LED, 1-FACE, 5-SECTION, BRACKET MOUNTED	EACH	1		1				
* 88030110	SIGNAL HEAD, LED, 1-FACE, 5-SECTION, MAST-ARM MOUNTED	EACH	2		2				
* 88102717	PEDESTRIAN SIGNAL HEAD, LED, 1-FACE, BRACKET MOUNTED WITH COUNTDOWN TIMER	EACH	12		12				
* 88200410	TRAFFIC SIGNAL BACKPLATE, LOUVERED, FORMED PLASTIC	EACH	8		8				
* 88500100	INDUCTIVE LOOP DETECTOR	EACH	1		1				
* 88600100	DETECTOR LOOP, TYPE I	FOOT	905		905				
* 88700200	LIGHT DETECTOR	EACH	2		2				
* 88700300	LIGHT DETECTOR AMPLIFIER	EACH	1		1				
* 89000101	TEMPORARY TRAFFIC SIGNAL INSTALLATION	EACH	1		1				
* 89500120	REMOVE EXISTING SERVICE INSTALLATION	EACH	1		1				
* 89502300	REMOVE ELECTRIC CABLE FROM CONDUIT	FOOT	1,316		1316				
* 89502375	REMOVE EXISTING TRAFFIC SIGNAL EQUIPMENT	EACH	3		3				

\* DENOTES SPECIALTY ITEMS

△ REVISED - 09/04/2024

MODEL: Detail  
FILE NAME: P:\projects\2024\2129C\_DESIGN\ChitWork\Sheet2129\_SHT\_Quantities.dwg



DESIGNED - JRK	REVISED - 09/04/2024
DRAWN - CC	REVISED -
CHECKED - JGC	REVISED -
DATE - 09/04/2024	REVISED -

**STATE OF ILLINOIS  
DEPARTMENT OF TRANSPORTATION**

**SUMMARY OF QUANTITIES**

SCALE: SHEET OF SHEETS STA. TO STA.

F.A.U. RTE.	SECTION	COUNTY	TOTAL SHEETS	SHEET NO.
2760	22-00183-00-BT	COOK	182	12
CONTRACT NO. 61K70				
ILLINOIS FED. AID PROJECT				

CODE NO.	ITEM	UNIT	TOTAL QUANTITY	CONSTRUCTION CODE					
				80% FED / 20% LOCAL	80% FED / 20% LOCAL	80% FED / 20% LOCAL	80% FED / 20% LOCAL	80% FED / 20% LOCAL	
				ROADWAY	TRAFFIC SIGNALS	BICYCLE PATH	LIGHTING	TRAINEES	
				0005	0021	0028	0021	0042	
				URBAN	URBAN	URBAN	URBAN	URBAN	
* X8161000	EXPOSE AND RELOCATE EXISTING UNIT DUCT	FOOT	20				20		
* X8211007	TEMPORARY LUMINAIRE, LED, ROADWAY, OUTPUT DESIGNATION G	EACH	4				4		
* X8250091	COMBINATION LIGHTING CONTROLLER	EACH	1				1		
* X8301042	MAST ARM, ALUMINUM, 12 FT.	EACH	2				2		
* X8360210	LIGHT POLE FOUNDATION, 24" DIAMETER, SPECIAL	FOOT	40				40		
* X8360215	LIGHT POLE FOUNDATION, 24" DIAMETER, OFFSET	FOOT	42				42		
* X8410141	REMOVAL OF TEMPORARY LUMINAIRE	EACH	4				4		
* X8570233	FULL-ACTUATED CONTROLLER AND TYPE SUPER P CABINET (SPECIAL)	EACH	1		1				
* X8620200	UNINTERRUPTABLE POWER SUPPLY (SPECIAL)	EACH	1		1				
* X8760200	ACCESSIBLE PEDESTRIAN SIGNALS	EACH	12		12				
* X8770127	STEEL COMBINATION MAST ARM ASSEMBLY AND POLE 32 FT. (SPECIAL)	EACH	1		1				
* X8770136	STEEL COMBINATION MAST ARM ASSEMBLY AND POLE 36 FT. (SPECIAL)	EACH	1		1				
* X8780012	CONCRETE FOUNDATION, TYPE A 12-INCH DIAMETER	FOOT	12		12				
* X8780107	CONCRETE FOUNDATION (SPECIAL)	FOOT	16		16				
* X8891009	VIDEO VEHICLE DETECTION SYSTEM, SINGLE APPROACH	EACH	3		3				
* XX002260	STRUCTURES TO BE REMOVED	EACH	15	15					

\* DENOTES SPECIALTY ITEMS

△ REVISED - 09/04/2024

MODEL: D:\epstein\p10\epstein\2024\DESIGN\CHITWORKING\Sheet2126\_SHT\_COARDES.dwg



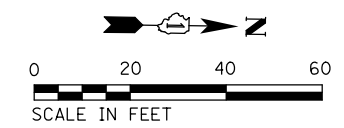
DESIGNED -	JRK	REVISED -	09/04/2024
DRAWN -	CC	REVISED -	
CHECKED -	JGC	REVISED -	
DATE -	09/04/2024	REVISED -	

**STATE OF ILLINOIS  
DEPARTMENT OF TRANSPORTATION**

**SUMMARY OF QUANTITIES**

SCALE: SHEET OF SHEETS STA. TO STA.

F.A.U. RTE.	SECTION	COUNTY	TOTAL SHEETS	SHEET NO.
2760	22-00183-00-BT	COOK	182	16
CONTRACT NO. 61K70				
ILLINOIS FED. AID PROJECT				



**CONSTRUCTION NOTES:**

① THE CONTRACTOR SHALL REMOVE THE EXISTING MAST ARM ON THE NORTHEAST CORNER ALONG WITH ALL ASSOCIATED TRAFFIC SIGNAL EQUIPMENT AND CABLES. THE LUMINAIRES, LUMINAIRE MAST ARMS, AND ASSOCIATED CABLES SHALL BE REMOVED FROM ALL FOUR (4) EXISTING COMBINATION MAST ARMS.

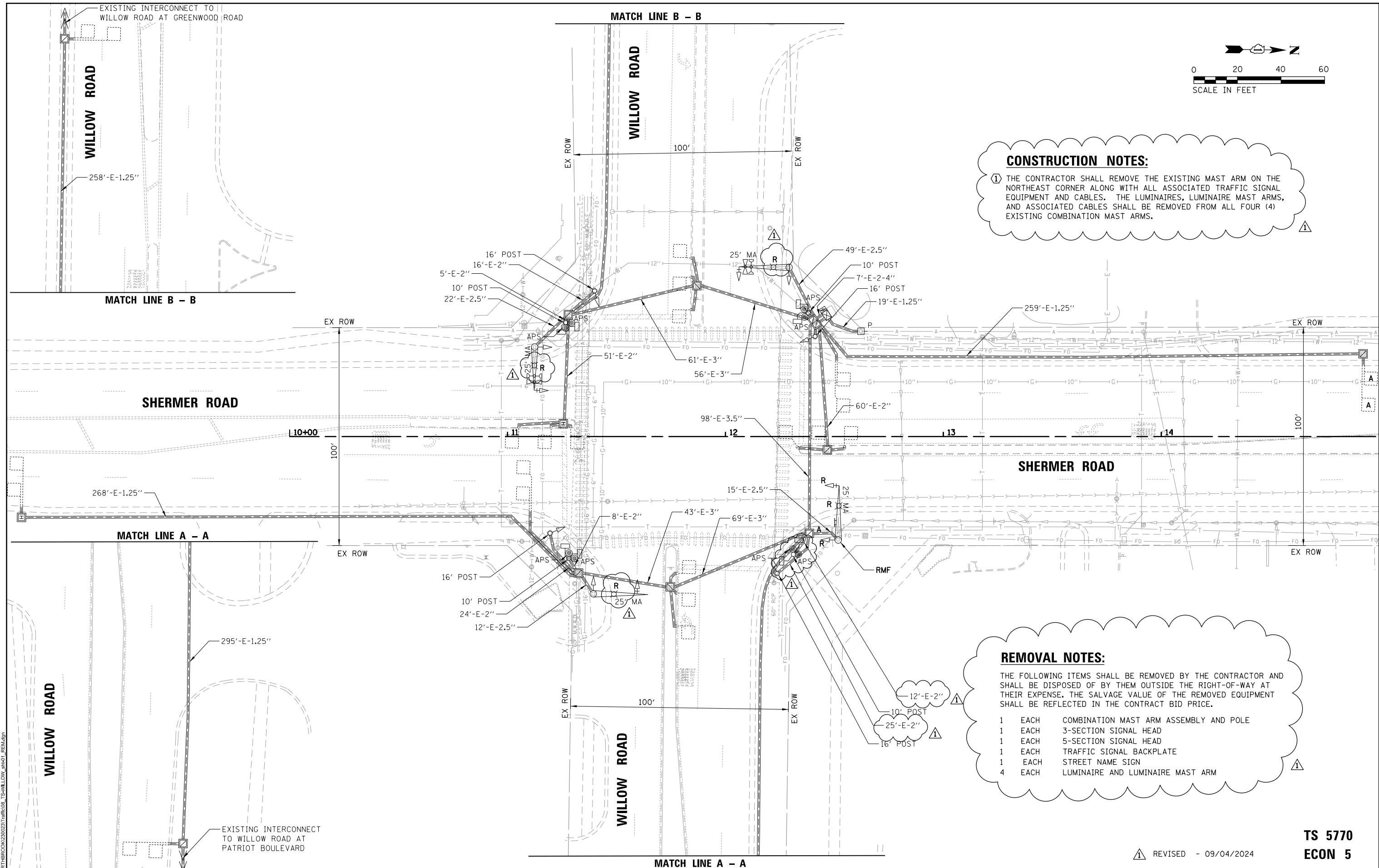
**REMOVAL NOTES:**

THE FOLLOWING ITEMS SHALL BE REMOVED BY THE CONTRACTOR AND SHALL BE DISPOSED OF BY THEM OUTSIDE THE RIGHT-OF-WAY AT THEIR EXPENSE. THE SALVAGE VALUE OF THE REMOVED EQUIPMENT SHALL BE REFLECTED IN THE CONTRACT BID PRICE.

- 1 EACH COMBINATION MAST ARM ASSEMBLY AND POLE
- 1 EACH 3-SECTION SIGNAL HEAD
- 1 EACH 5-SECTION SIGNAL HEAD
- 1 EACH TRAFFIC SIGNAL BACKPLATE
- 1 EACH STREET NAME SIGN
- 4 EACH LUMINAIRE AND LUMINAIRE MAST ARM

△ REVISED - 09/04/2024

**TS 5770  
ECON 5**



MODEL: D:\ts\ts5770\TS5770.dwg  
 FILE NAME: TS5770\TS5770.dwg  
 PROJECT: TS5770

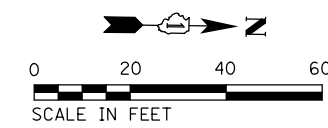
USER NAME = pandrews	DESIGNED - PJA	REVISED - 09/04/2024
DRAWN - FPB/PJA	CHECKED - GMZ	REVISED -
PLOT SCALE = 40'	DATE -	REVISED -
PLOT DATE = 9/4/2024		

STATE OF ILLINOIS  
DEPARTMENT OF TRANSPORTATION

**EXISTING TRAFFIC SIGNAL EQUIPMENT REMOVAL PLAN  
SHERMER ROAD AT WILLOW ROAD**

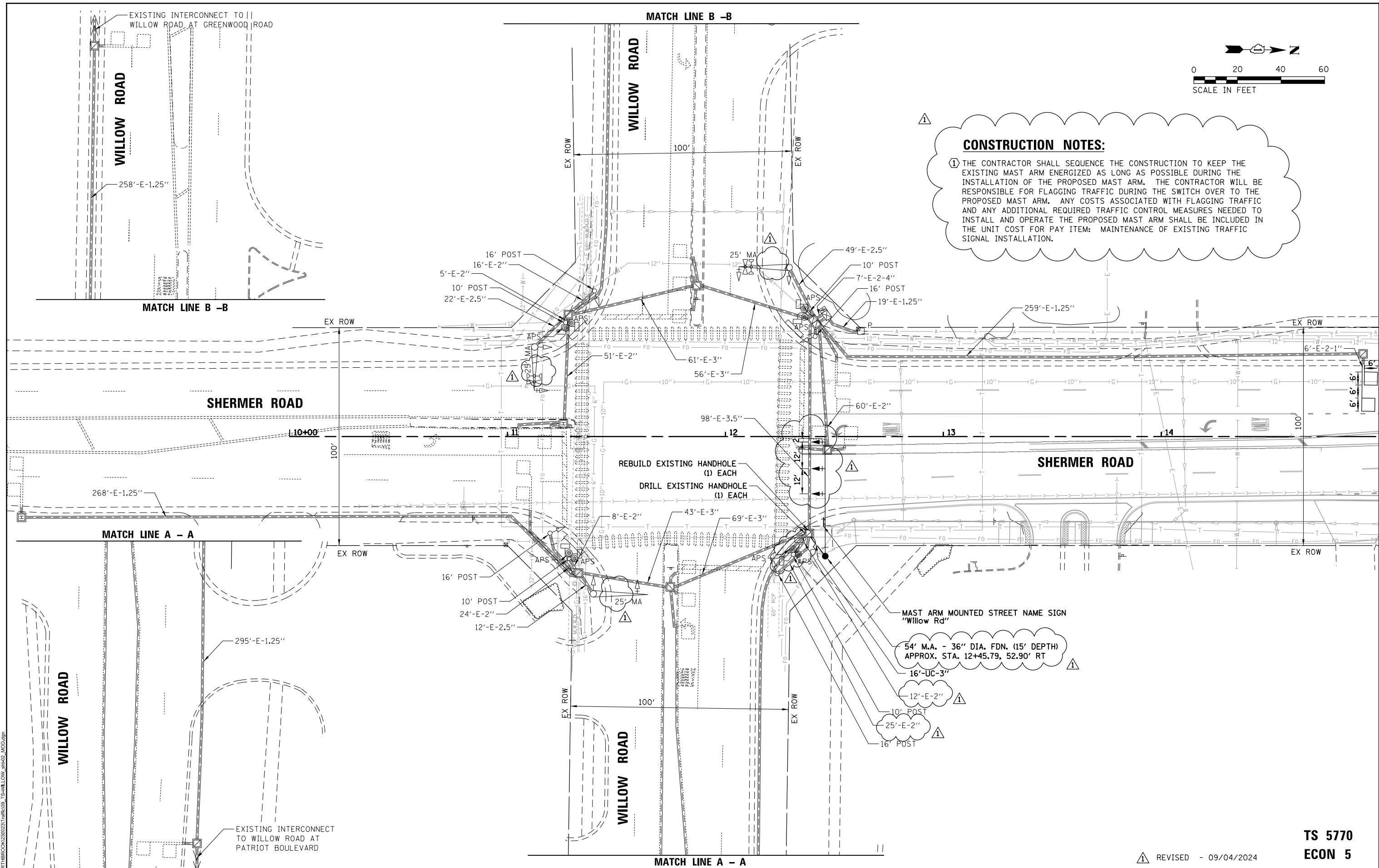
SCALE: 1" = 40' SHEET OF SHEETS STA. TO STA.

F.A. RTE.	SECTION	COUNTY	TOTAL SHEETS	SHEET NO.
	22-00183-00-BT		182	109
CONTRACT NO. 61K70				
ILLINOIS FED. AID PROJECT				



**CONSTRUCTION NOTES:**

① THE CONTRACTOR SHALL SEQUENCE THE CONSTRUCTION TO KEEP THE EXISTING MAST ARM ENERGIZED AS LONG AS POSSIBLE DURING THE INSTALLATION OF THE PROPOSED MAST ARM. THE CONTRACTOR WILL BE RESPONSIBLE FOR FLAGGING TRAFFIC DURING THE SWITCH OVER TO THE PROPOSED MAST ARM. ANY COSTS ASSOCIATED WITH FLAGGING TRAFFIC AND ANY ADDITIONAL REQUIRED TRAFFIC CONTROL MEASURES NEEDED TO INSTALL AND OPERATE THE PROPOSED MAST ARM SHALL BE INCLUDED IN THE UNIT COST FOR PAY ITEM: MAINTENANCE OF EXISTING TRAFFIC SIGNAL INSTALLATION.



MODEL: D:\ts\ts5770\TS5770.dwg  
 FILE NAME: TS5770.dwg  
 USER: pandrews  
 DATE: 09/04/2024

USER NAME = pandrews	DESIGNED - PJA	REVISED - 09/04/2024
PLOT SCALE = 40'	DRAWN - FPB/PJA	REVISED -
PLOT DATE = 9/4/2024	CHECKED - GMZ	REVISED -
	DATE -	REVISED -

STATE OF ILLINOIS  
DEPARTMENT OF TRANSPORTATION

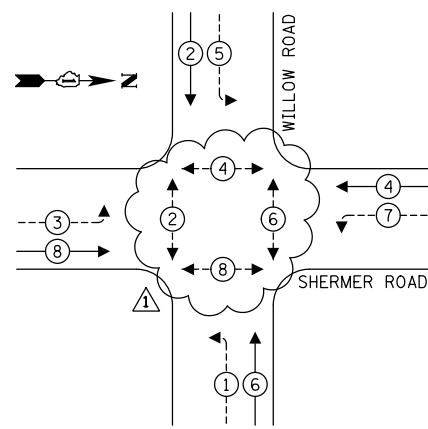
TRAFFIC SIGNAL MODIFICATION PLAN	
SHERMER ROAD AT WILLOW ROAD	
SCALE: 1" = 40'	SHEET OF SHEETS STA. TO STA.

F.A. RTE.	SECTION	COUNTY	TOTAL SHEETS	SHEET NO.
	22-00183-00-BT		182	110
CONTRACT NO. 61K70				
ILLINOIS FED. AID PROJECT				

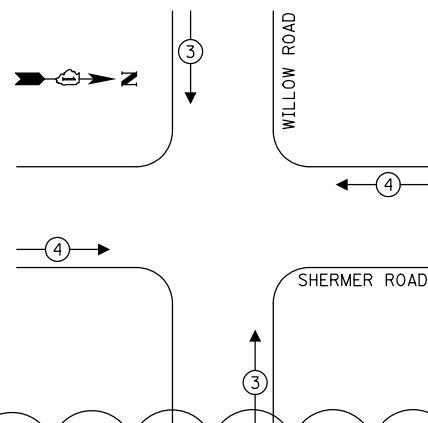
△ REVISED - 09/04/2024

**TS 5770  
ECON 5**

**CONTROLLER SEQUENCE**



**EMERGENCY VEHICLE  
PREEMPTION SEQUENCE**



**LEGEND:**

- ← ⊙ → PROTECTED PHASE
- ← ⊙ ⊖ → PROTECTED/PERMITTED PHASE
- ← ⊙ ⊕ → PEDESTRIAN PHASE
- ← ⊙ ⊖ ⊕ → OVERLAP

**TRAFFIC SIGNAL  
ELECTRICAL SERVICE REQUIREMENTS**

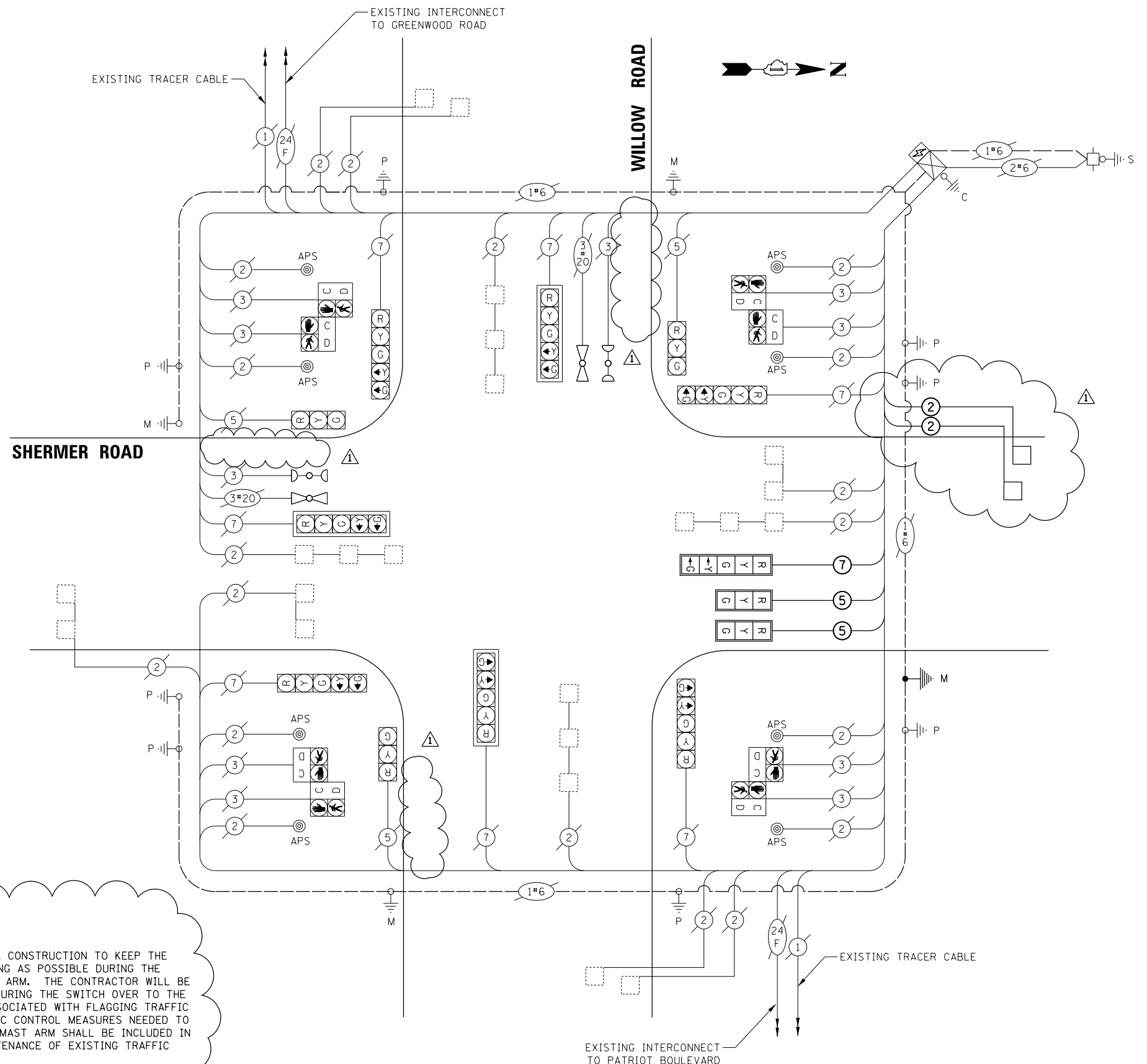
TYPE	QUANTITY	LED WATTAGE	TOTAL WATTAGE
<b>SIGNAL HEAD</b>			
3-SECTION	5	11	55
4-SECTION	-	14	-
5-SECTION	8	13	104
<b>PROGRAMMABLE SIGNALS</b>			
3-SECTION	-	22	-
4-SECTION	-	32	-
5-SECTION	-	28	-
<b>PED. SIGNAL</b>			
CONTROLLER	1	150	150
MASTER CONTROLLER	-	100	-
UPS	1	25	25
<b>DETECTION</b>			
RADAR	-	20	-
VIDEO	-	20	-
<b>NETWORK SWITCH II OR III</b>			
BLANK-OUT SIGN	-	35	-
CELLULAR MODEM	-	15	-
<b>TOTAL SERVICE WIRE SIZING</b>			<b>454</b>
UPS CHARGING	1	225	225
BATTERY HEATER MAT	1	180	180
CABINET HEATER	1	200	200
FLASHER	-	15	-
LED STREET NAME SIGN	-	120	-
LUMINAIRE	-	400	-
<b>TOTAL SERVICE WIRE SIZING</b>			<b>1059</b>

ENERGY COSTS TO:  
VILLAGE OF NORTHBROOK  
1225 CEDAR LN, NORTHBROOK, IL 60062

ENERGY SUPPLY: CONTACT: NEW BUSINESS DEPARTMENT  
PHONE: 866-639-3532  
COMPANY: COMMONWEALTH EDISON  
ACCOUNT NUMBER: 52131-97000

**CONSTRUCTION NOTES:**

① THE CONTRACTOR SHALL SEQUENCE THE CONSTRUCTION TO KEEP THE EXISTING MAST ARM ENERGIZED AS LONG AS POSSIBLE DURING THE INSTALLATION OF THE PROPOSED MAST ARM. THE CONTRACTOR WILL BE RESPONSIBLE FOR FLAGGING TRAFFIC DURING THE SWITCH OVER TO THE PROPOSED MAST ARM. ANY COSTS ASSOCIATED WITH FLAGGING TRAFFIC AND ANY ADDITIONAL REQUIRED TRAFFIC CONTROL MEASURES NEEDED TO INSTALL AND OPERATE THE PROPOSED MAST ARM SHALL BE INCLUDED IN THE UNIT COST FOR PAY ITEM: MAINTENANCE OF EXISTING TRAFFIC SIGNAL INSTALLATION.



**CABLE PLAN**  
(NOT TO SCALE)

STATE OF ILLINOIS  
DEPARTMENT OF TRANSPORTATION

**SCHEDULE OF QUANTITIES, CABLE PLAN, PHASE DESIGNATION DIAGRAM,  
AND EMERGENCY VEHICLE PREEMPTION SEQUENCE  
SHERMER ROAD AT WILLOW ROAD**

REVISED - 09/04/2024

**TS 5770  
ECON 5**

MODEL: (default) FILE NAME: R:\NORTHBROOK\20230321\TS-WILLOW\_48x36\_CAB.dwg

USER NAME	= pandrews
PLOT SCALE	= 1/10
PLOT DATE	= 9/4/2024

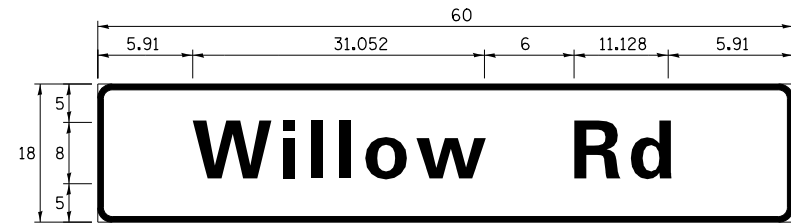
DESIGNED	- PJA	REVISED	- 09/04/2024
DRAWN	- FPB/PJA	REVISED	-
CHECKED	- GMZ	REVISED	-
DATE	-	REVISED	-

SCALE: NOT TO SCALE SHEET OF SHEETS STA. TO STA.

F.A. RTE.	SECTION	COUNTY	TOTAL SHEETS	SHEET NO.
	22-00183-00-BT		182	111
CONTRACT NO. 61K70				
ILLINOIS FED. AID PROJECT				

**SIGN PANEL – TYPE 1**

ALL DIMENSIONS ARE IN INCHES UNLESS NOTED OTHERWISE



DESIGN SERIES	AREA (SQ FT)	SIGN PANEL TYPE	SHEETING TYPE	QTY. REQUIRED
D	7.5	1	ZZ	1

**SCHEDULE OF QUANTITIES**

ITEM	UNIT	QUANTITY
SIGN PANEL - TYPE 1	SQ FT	8
UNDERGROUND CONDUIT, GALVANIZED STEEL, 3" DIA.	FOOT	16
MAINTENANCE OF EXISTING TRAFFIC SIGNAL INSTALLATION	EACH	1
ELECTRIC CABLE IN CONDUIT, SIGNAL NO. 14 5C	FOOT	402
ELECTRIC CABLE IN CONDUIT, SIGNAL NO. 14 7C	FOOT	218
ELECTRIC CABLE IN CONDUIT, LEAD-IN, NO. 14 1 PAIR	FOOT	580
ELECTRIC CABLE IN CONDUIT, EQUIPMENT GROUNDING CONDUCTOR, NO. 6 1C	FOOT	34
STEEL MAST ARM ASSEMBLY AND POLE, 54 FT.	EACH	1
CONCRETE FOUNDATION, TYPE E 36-INCH DIAMETER	FOOT	15
DRILL EXISTING HANDHOLE	EACH	1
SIGNAL HEAD, LED, 1-FACE, 3-SECTION, MAST-ARM MOUNTED	EACH	2
SIGNAL HEAD, LED, 1-FACE, 5-SECTION, MAST-ARM MOUNTED	EACH	1
TRAFFIC SIGNAL BACKPLATE, LOUVERED, FORMED PLASTIC	EACH	3
REMOVE ELECTRIC CABLE FROM CONDUIT	FOOT	1316
REMOVE EXISTING TRAFFIC SIGNAL EQUIPMENT	EACH	1
REMOVE EXISTING CONCRETE FOUNDATION	EACH	1
INDUCTIVE LOOP DETECTOR	EACH	1
DETECTOR LOOP, TYPE I	FOOT	72
REBUILD EXISTING HANDHOLE	EACH	1
TEMPORARY TRAFFIC SIGNAL TIMING	EACH	1



MODEL: D:\mkt\... FILE NAME: ...

**TS 5770  
ECON 5**

REVISD - 09/04/2024

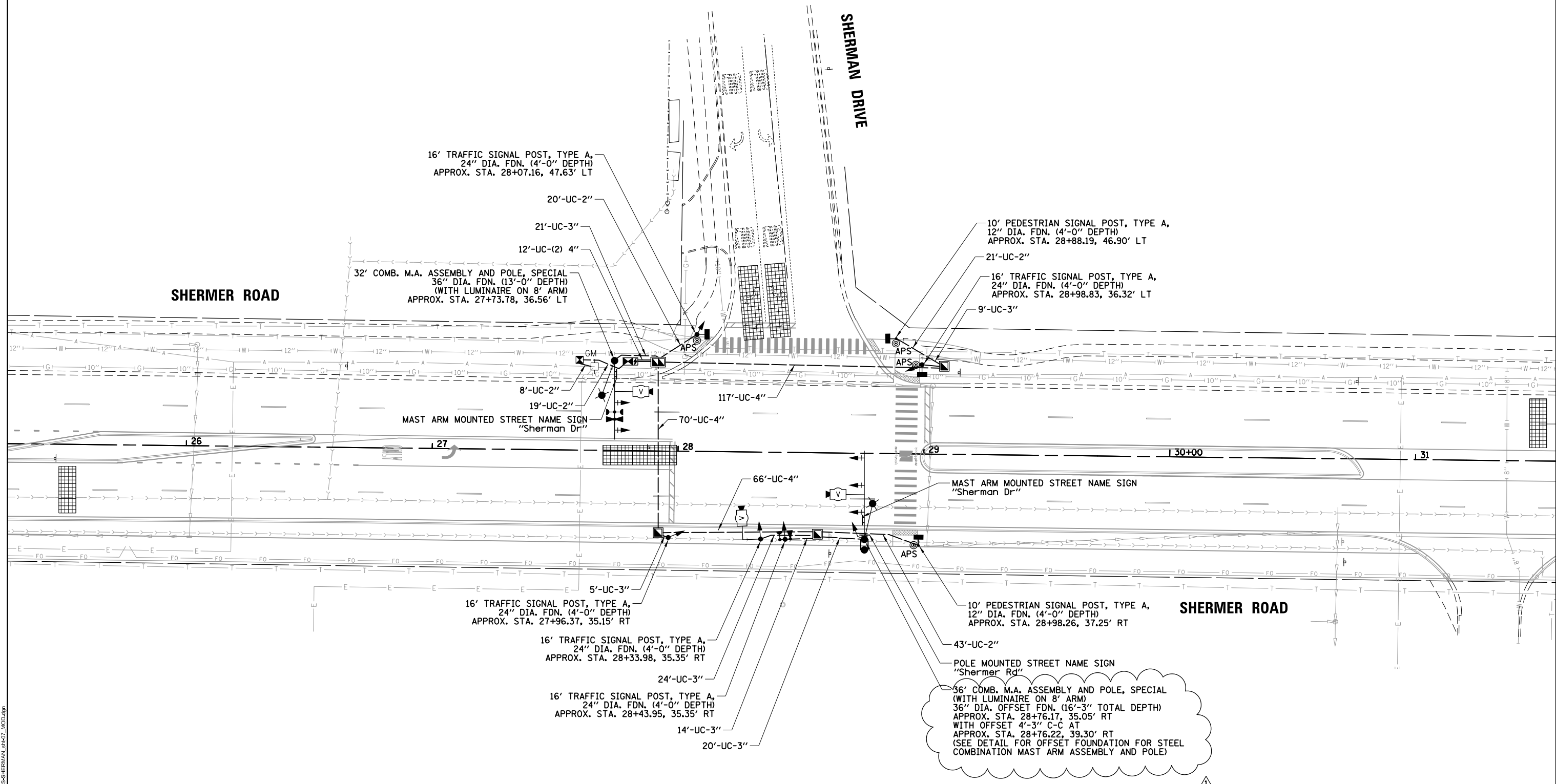
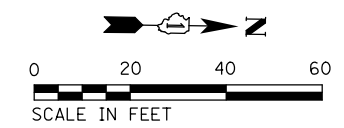
USER NAME = pandrews	DESIGNED - PJA	REVISED - 09/04/2024
	DRAWN - FPB/PJA	REVISED -
PLOT SCALE = 40'	CHECKED - GMZ	REVISED -
PLOT DATE = 9/4/2024	DATE -	REVISED -

STATE OF ILLINOIS  
DEPARTMENT OF TRANSPORTATION

**MAST ARM MOUNTED STREET NAME SIGN  
AND SCHEDULE OF QUANTITIES  
SHERMER ROAD AT WILLOW ROAD**

SCALE: 1" = 40' SHEET OF SHEETS STA. TO STA.

F.A. RTE.	SECTION	COUNTY	TOTAL SHEETS	SHEET NO.
	22-00183-00-BT		182	112
CONTRACT NO. 61K70				
ILLINOIS FED. AID PROJECT				



REVISD - 09/04/2024

MODEL: D:\info\... FILE NAME: ...

USER NAME = pandrews	DESIGNED - PJA	REVISED - 09/04/2024
PLOT SCALE = 40'	DRAWN - FPB/PJA	REVISED -
PLOT DATE = 9/4/2024	CHECKED - GMZ	REVISED -
	DATE -	REVISED -

**STATE OF ILLINOIS  
DEPARTMENT OF TRANSPORTATION**

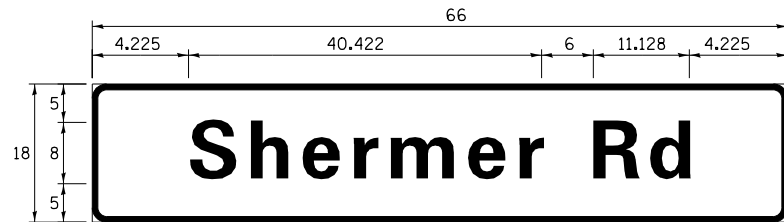
<b>TRAFFIC SIGNAL MODIFICATION PLAN SHERMER ROAD AT SHERMAN DRIVE</b>	
SCALE: 1" = 40'	SHEET OF SHEETS STA. TO STA.

F.A. RTE.	SECTION	COUNTY	TOTAL SHEETS	SHEET NO.
	22-00183-00-BT		182	119
CONTRACT NO. 61K70				
ILLINOIS FED. AID PROJECT				

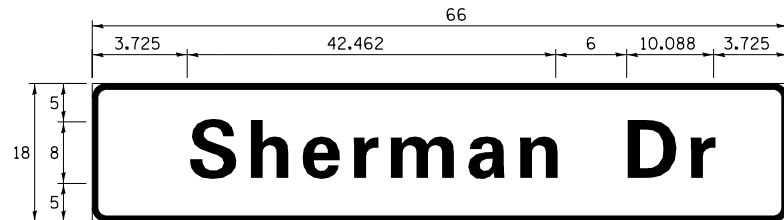


**SIGN PANEL – TYPE 1**

ALL DIMENSIONS ARE IN INCHES UNLESS NOTED OTHERWISE



DESIGN SERIES	AREA (SQ FT)	SIGN PANEL TYPE	SHEETING TYPE	QTY. REQUIRED
D	8.25	1	ZZ	1



DESIGN SERIES	AREA (SQ FT)	SIGN PANEL TYPE	SHEETING TYPE	QTY. REQUIRED
D	8.25	1	ZZ	2

**SCHEDULE OF QUANTITIES**

ITEM	UNIT	QUANTITY
SIGN PANEL - TYPE 1	SQ FT	25
UNDERGROUND CONDUIT, GALVANIZED STEEL, 2" DIA.	FOOT	111
UNDERGROUND CONDUIT, GALVANIZED STEEL, 3" DIA.	FOOT	93
UNDERGROUND CONDUIT, GALVANIZED STEEL, 4" DIA.	FOOT	277
HANDHOLE	EACH	3
DOUBLE HANDHOLE	EACH	1
PAINT NEW TRAFFIC SIGNAL POST	EACH	7
PAINT NEW COMBINATION MAST ARM AND POLE, UNDER 40 FOOT	EACH	2
ELECTRIC CABLE IN CONDUIT, SIGNAL NO. 14 2C	FOOT	651
ELECTRIC CABLE IN CONDUIT, SIGNAL NO. 14 3C	FOOT	991
ELECTRIC CABLE IN CONDUIT, SIGNAL NO. 14 5C	FOOT	1521
ELECTRIC CABLE IN CONDUIT, SIGNAL NO. 14 7C	FOOT	437
ELECTRIC CABLE IN CONDUIT, SERVICE, NO. 6 2 C	FOOT	68
ELECTRIC CABLE IN CONDUIT, EQUIPMENT GROUNDING CONDUCTOR, NO. 6 1C	FOOT	747
TRAFFIC SIGNAL POST, GALVANIZED STEEL 16 FT.	EACH	5
CONCRETE FOUNDATION, TYPE A	FOOT	20
CONCRETE FOUNDATION, TYPE C	FOOT	4
CONCRETE FOUNDATION, TYPE E 36-INCH DIAMETER	FOOT	13
SIGNAL HEAD, LED, 1-FACE, 3-SECTION, MAST-ARM MOUNTED	EACH	4
SIGNAL HEAD, LED, 1-FACE, 3-SECTION, BRACKET MOUNTED	EACH	5
SIGNAL HEAD, LED, 1-FACE, 5-SECTION, BRACKET MOUNTED	EACH	1
SIGNAL HEAD, LED, 1-FACE, 5-SECTION, MAST-ARM MOUNTED	EACH	1
PEDESTRIAN SIGNAL HEAD, LED, 1-FACE, BRACKET MOUNTED WITH COUNTDOWN TIMER	EACH	4
TRAFFIC SIGNAL BACKPLATE, LOUVERED, FORMED PLASTIC	EACH	5
LIGHT DETECTOR	EACH	2
LIGHT DETECTOR AMPLIFIER	EACH	1
TEMPORARY TRAFFIC SIGNAL INSTALLATION	EACH	1
REMOVE EXISTING SERVICE INSTALLATION	EACH	1
REMOVE EXISTING TRAFFIC SIGNAL EQUIPMENT	EACH	1
REMOVE EXISTING HANDHOLE	EACH	3
REMOVE EXISTING DOUBLE HANDHOLE	EACH	1
REMOVE EXISTING CONCRETE FOUNDATION	EACH	8
EMERGENCY VEHICLE PRIORITY SYSTEM LINE SENSOR CABLE, NO. 20 3/C	FOOT	312
SERVICE INSTALLATION, GROUND MOUNTED, METERED	EACH	1
PEDESTRIAN SIGNAL POST, 10 FT.	EACH	2
FULL-ACTUATED CONTROLLER AND TYPE SUPER P CABINET (SPECIAL)	EACH	1
UNINTERRUPTABLE POWER SUPPLY (SPECIAL)	EACH	1
ACCESSIBLE PEDESTRIAN SIGNALS	EACH	4
STEEL COMBINATION MAST ARM ASSEMBLY AND POLE 32 FT. (SPECIAL)	EACH	1
STEEL COMBINATION MAST ARM ASSEMBLY AND POLE 36 FT. (SPECIAL)	EACH	1
CONCRETE FOUNDATION, TYPE A 12-INCH DIAMETER	FOOT	8
CONCRETE FOUNDATION (SPECIAL)	FOOT	16
VIDEO VEHICLE DETECTION SYSTEM, SINGLE APPROACH	EACH	3
TEMPORARY TRAFFIC SIGNAL TIMING	EACH	1



MODEL: D:\shin\... FILE NAME: ILL\DOT\HERO\02\2023\TAMR\020\_T&S-SHERMAN\_0419\_09\_STN.dgn

REVISION 1 - 09/04/2024

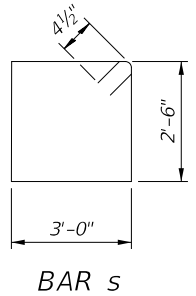
USER NAME = pandrews	DESIGNED - PJA	REVISED - 09/04/2024
PLOT SCALE = 40'	CHECKED - GMZ	REVISED -
PLOT DATE = 9/4/2024	DATE -	REVISED -

STATE OF ILLINOIS  
DEPARTMENT OF TRANSPORTATION

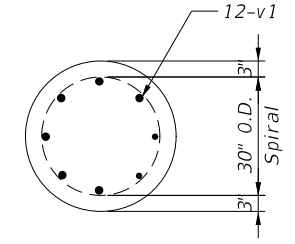
**MAST ARM MOUNTED STREET NAME SIGN  
AND SCHEDULE OF QUANTITIES  
SHERMER ROAD AT SHERMAN DRIVE**

SCALE: NOT TO SCALE SHEET OF SHEETS STA. TO STA.

F.A. RTE.	SECTION	COUNTY	TOTAL SHEETS	SHEET NO.
	22-00183-00-BT		182	121
CONTRACT NO. 61K70				
ILLINOIS FED. AID PROJECT				



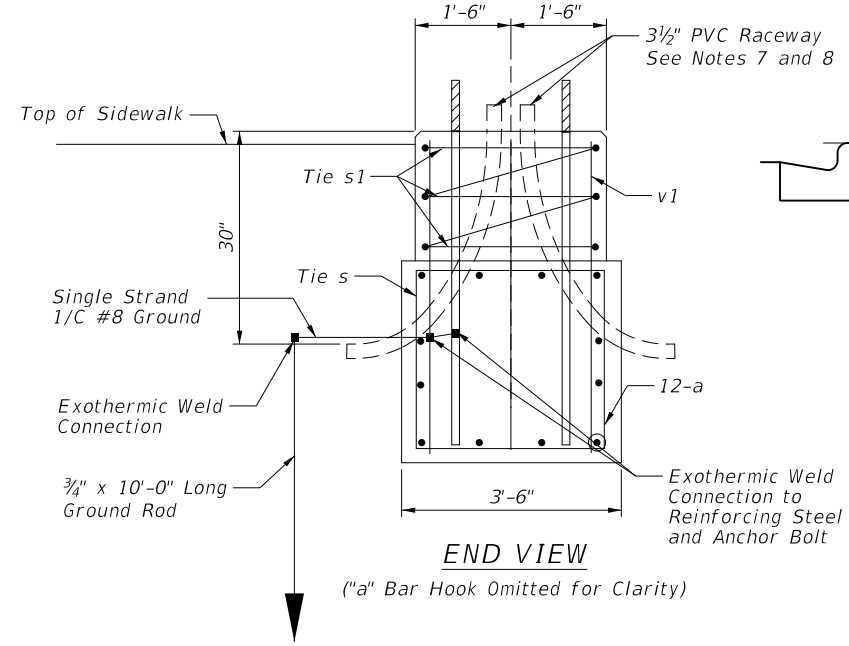
BAR s



BAR s1

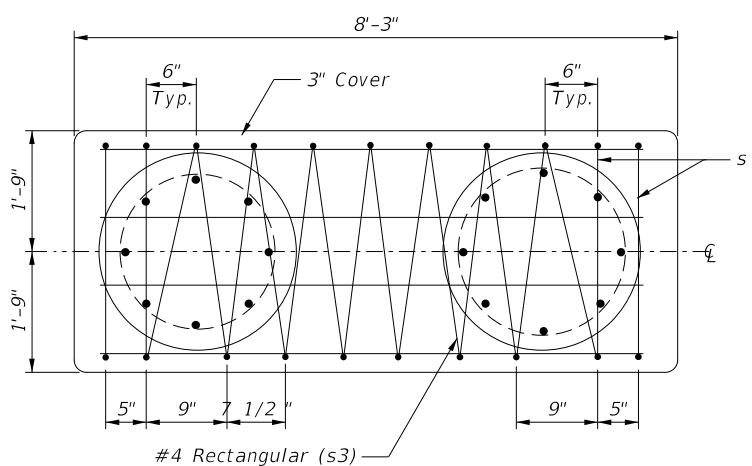
**BILL OF MATERIAL**

Mark	No.	Size	Length	Shape
a	12	#7	11'-9"	□
s	4	#4	11'-9"	□
s1	1	#4	23'-6"	○
s2	1	#4	243'-6"	○
s3	1	#4	143'-0"	□
v1	12	#7	3'-9"	□
v2	12	#8	15'-4"	□



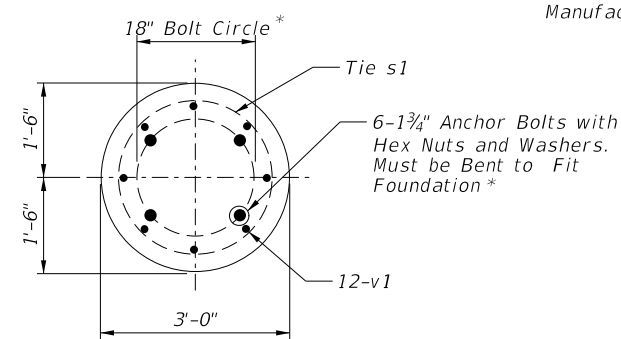
END VIEW

("a" Bar Hook Omitted for Clarity)

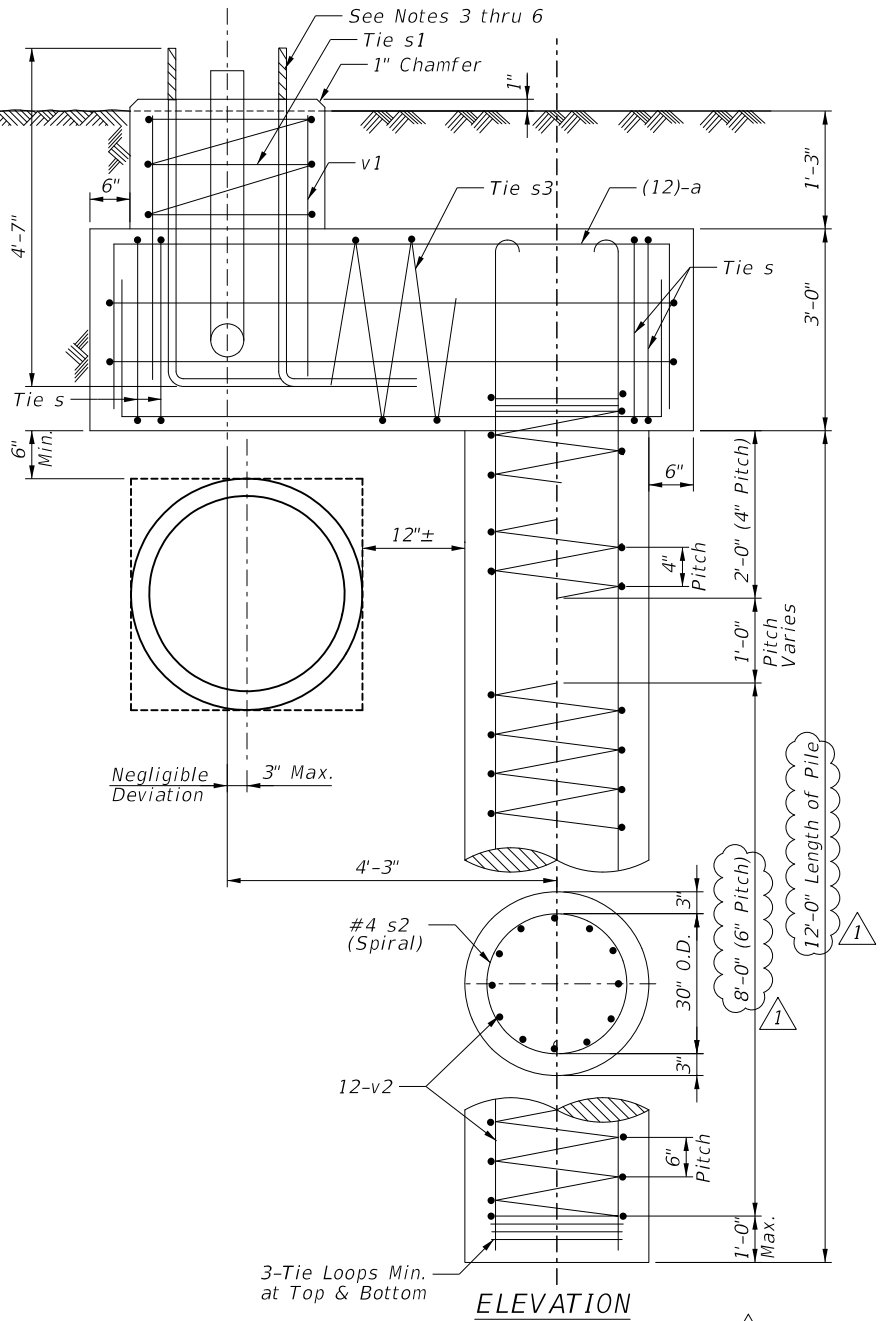


PLAN-CAP BEAM

**TOP VIEW**



\* Coordinate with Mast Arm and Pole Manufacturer



ELEVATION

**NOTES:**

- All Dimensions are in Inches Unless Otherwise Shown.
- Excavation of the Pole Foundation Shall be Made with an Auger, 36" or 42" in Diameter.
- The Anchor Rod Shall be a Hook Rod Type. Cold Bending of the Anchor Rod will not be Allowed. The Radius of the Hook Bend Shall Not be Less Than 4 Times the Nominal Diameter of the Anchor Rod. A Tack Welded Anchor Rod May be Substituted with the Approval of the Engineer.
- The Anchor Bolts and Raceways Shall be Properly Secured in Place Before the Concrete is Placed in the Form.
- The Anchor Rods Shall be According to ASTM F1554 Grade 725 (Grade 105). Nuts Shall be Hexagon Nuts According to ASTM A 194 2H or ASTM A 563 DH, and Washers Shall be According to ASTM F 436.
- The Contractor Shall Coordinate Extension of Anchor Bolts Above Top of Foundation with the Breakaway Device Manufacturer's Requirements. If Mast Arm and Pole are Mounted Without Breakaway Device, Anchor Bolts Shall Project 2 3/4" Above Top of the Foundation. The Contractor Shall Confirm Anchor Bolt Extension with Engineer.
- Raceway Shall Project 1" Above the Top of the Foundation.
- The Cable Trench Shall be backfilled and Firmly Compacted before the Mast Arm and Pole are Erected.

MODEL: Default  
FILE NAME: N:\NORTHBROOK\230023Traffic21\_TS-SHERMAN\_sht-10\_FDN.dgn

REVISED - 09/04/2024

USER NAME =	DESIGNED -	REVISED -	09/04/2024
	CHECKED -	REVISED -	
PLOT SCALE =	DRAWN -	REVISED -	
PLOT DATE =	CHECKED -	REVISED -	

STATE OF ILLINOIS  
DEPARTMENT OF TRANSPORTATION

OFFSET FOUNDATION FOR STEEL COMBINATION  
MAST ARM ASSEMBLY AND POLE

F.A. RTE.	SECTION	COUNTY	TOTAL SHEETS	SHEET NO.
	22-00183-00-BT		182	122
CONTRACT NO. 61K70				
ILLINOIS FED. AID PROJECT				

SHEET OF SHEETS