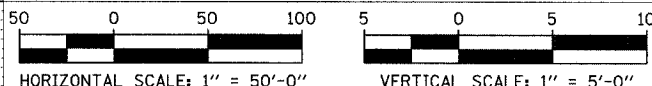
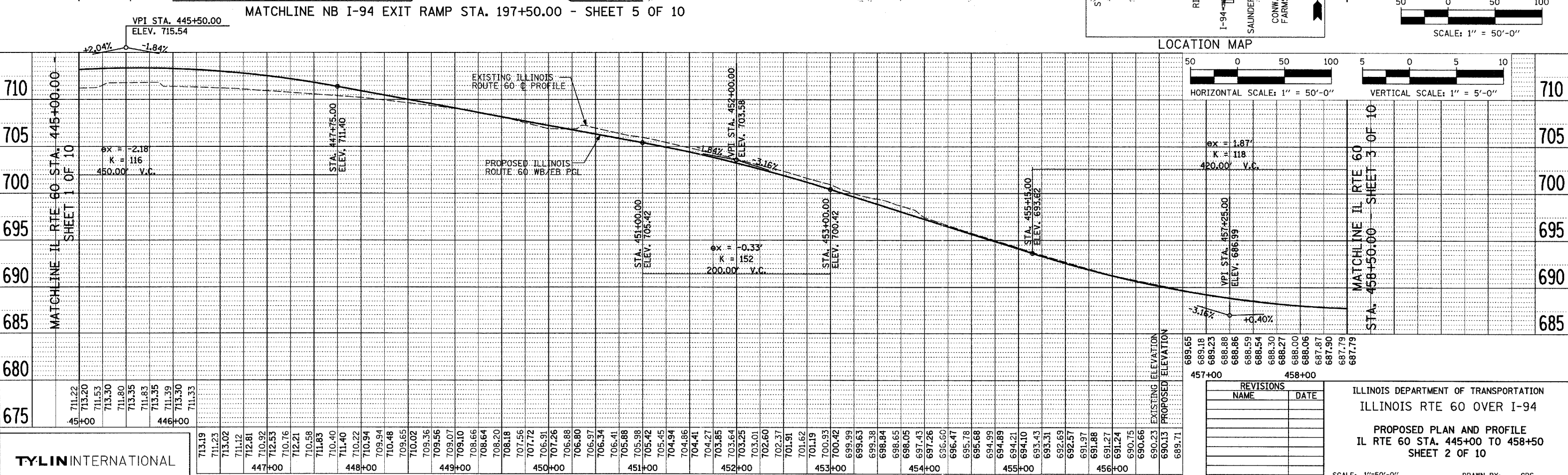
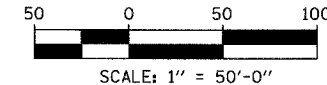
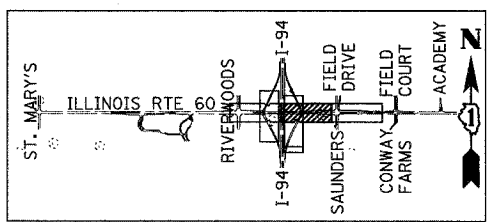
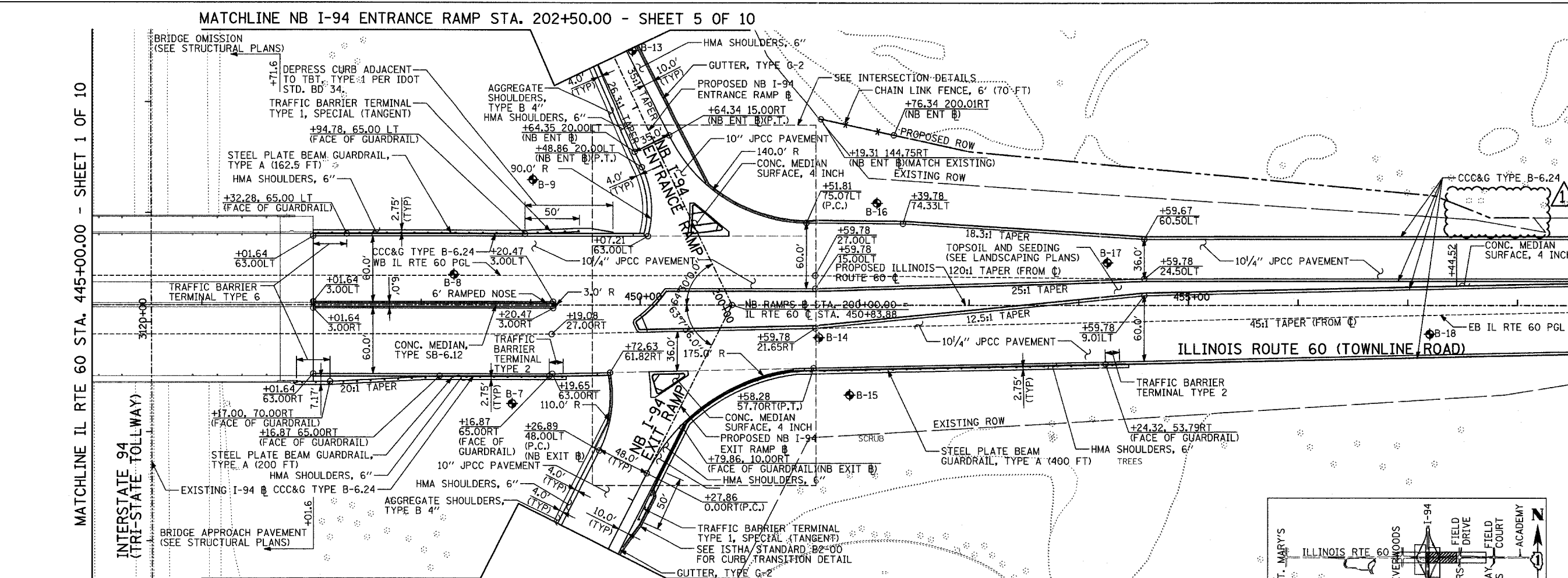


F.A.P. RTE.	SECTION	COUNTY	TOTAL SHEETS	SHEET NO.
335	119R-2	LAKE	439	56
STA. 432+83.12		TO STA. 470+56.84		
FED. ROAD DIST. NO.		ILLINOIS		FED. AID PROJECT

60801



NO.	NAME	DATE
1	ADDENDUM 1	08/31/07

ILLINOIS DEPARTMENT OF TRANSPORTATION  
ILLINOIS RTE 60 OVER I-94  
PROPOSED PLAN AND PROFILE  
IL RTE 60 STA. 445+00 TO 458+00  
SHEET 2 OF 10

SCALE: 1"=50'-0"  
DATE: MAY 8, 2007  
DRAWN BY: CBS  
CHECKED BY: MPG

TYLIN INTERNATIONAL

DATE: \_\_\_\_\_  
BY: \_\_\_\_\_  
SHEET 1 OF 10  
MATCHLINE IL RTE 60 STA. 445+00.00 - SHEET 1 OF 10

MATCHLINE NB I-94 EXIT RAMP STA. 197+50.00 - SHEET 5 OF 10

MATCHLINE IL RTE 60 STA. 458+50.00 - SHEET 3 OF 10

MATCHLINE IL RTE 60 STA. 445+00.00 - SHEET 1 OF 10

MATCHLINE NB I-94 ENTRANCE RAMP STA. 202+50.00 - SHEET 5 OF 10