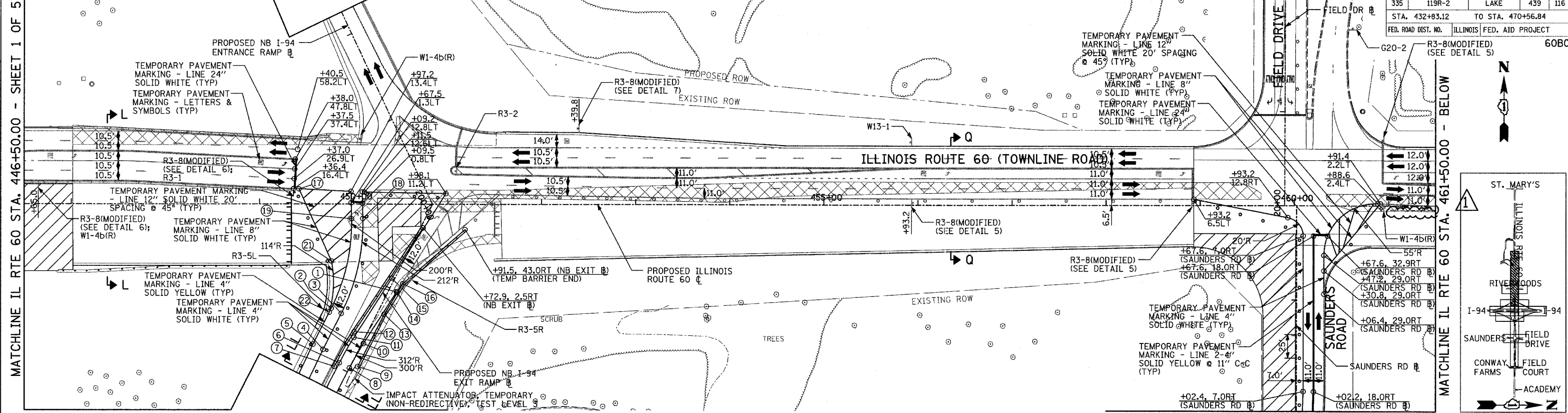


MATCHLINE NB I-94 ENTRANCE RAMP STA. 202+25.00 - SHEET 5 OF 5

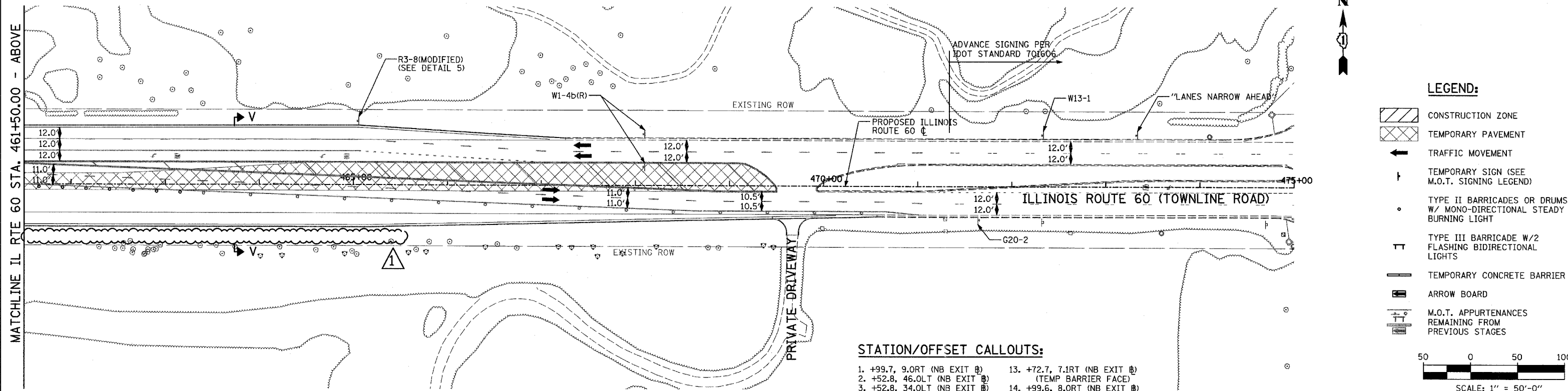
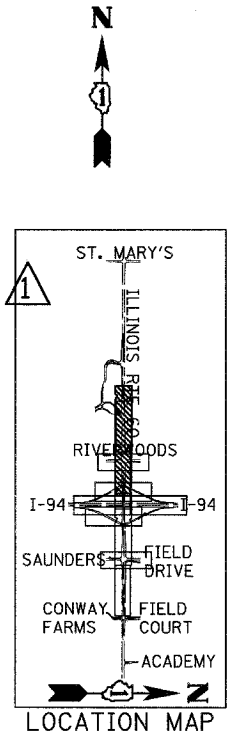
MATCHLINE FIELD DRIVE - SHEET 3 OF 5

F.A.P. RTE.	SECTION	COUNTY	TOTAL SHEETS	SHEET NO.
335	119R-2	LAKE	439	116
STA. 432+83.12		TO STA. 470+56.84		
FED. ROAD DIST. NO.		ILLINOIS	FED. AID PROJECT	
			60B01	



MATCHLINE NB I-94 EXIT RAMP STA. 197+25.00 - SHEET 5 OF 5

MATCHLINE SAUNDERS ROAD - SHEET 3 OF 5



**LEGEND:**

- CONSTRUCTION ZONE
- TEMPORARY PAVEMENT
- TRAFFIC MOVEMENT
- TEMPORARY SIGN (SEE M.O.T. SIGNING LEGEND)
- TYPE II BARRICADES OR DRUMS W/ MONO-DIRECTIONAL STEADY BURNING LIGHT
- TYPE III BARRICADE W/2 FLASHING BIDIRECTIONAL LIGHTS
- TEMPORARY CONCRETE BARRIER
- ARROW BOARD
- M.O.T. APPURTENANCES REMAINING FROM PREVIOUS STAGES

**STATION/OFFSET CALLOUTS:**

1. +99.7, 9.0RT (NB EXIT @)	13. +72.7, 7.1RT (NB EXIT @)
2. +52.8, 46.0LT (NB EXIT @)	(TEMP BARRIER FACE)
3. +52.8, 34.0LT (NB EXIT @)	14. +99.6, 8.0RT (NB EXIT @)
4. +09.8, 34.0LT (NB EXIT @)	(TEMP BARRIER FACE)
5. +09.8, 46.0LT (NB EXIT @)	15. +10.2, 3.0LT (NB EXIT @)
6. +04.8, 12.0LT (NB EXIT @)	16. +10.3, 10.1RT (NB EXIT @)
7. +99.0, 15.2LT (NB EXIT @)	(TEMP BARRIER FACE)
(TEMP BARRIER FACE)	17. +42.0, 15.9LT
8. +04.8, 0.0RT (NB EXIT @)	18. +52.8, 59.1LT (NB EXIT @)
9. +10.2, 7.1RT (NB EXIT @)	19. +47.1, 69.7LT (NB EXIT @)
10. +34.7, 1.5RT (NB EXIT @)	20. NOT USED
11. +35.9, 10.4LT (NB EXIT @)	21. +97.4, 68.4LT (NB EXIT @)
12. +41.3, 12.9LT (NB EXIT @)	22. +48.2, 46.0LT (NB EXIT @)
(TEMP BARRIER FACE)	

**REVISIONS**

NAME	DATE

ILLINOIS DEPARTMENT OF TRANSPORTATION  
ILLINOIS RTE 60 OVER I-94  
MAINTENANCE OF TRAFFIC PLAN  
IL RTE 60 STA. 446+50.00 TO 475+00.00  
STAGE 3A - SHEET 2 OF 5

SCALE: 1"=50'-0"  
DRAWN BY: MPG, CBS  
DATE: MAY 8, 2007  
CHECKED BY: JDF

TYLIN INTERNATIONAL

ADDENDUM 1 08/31/07