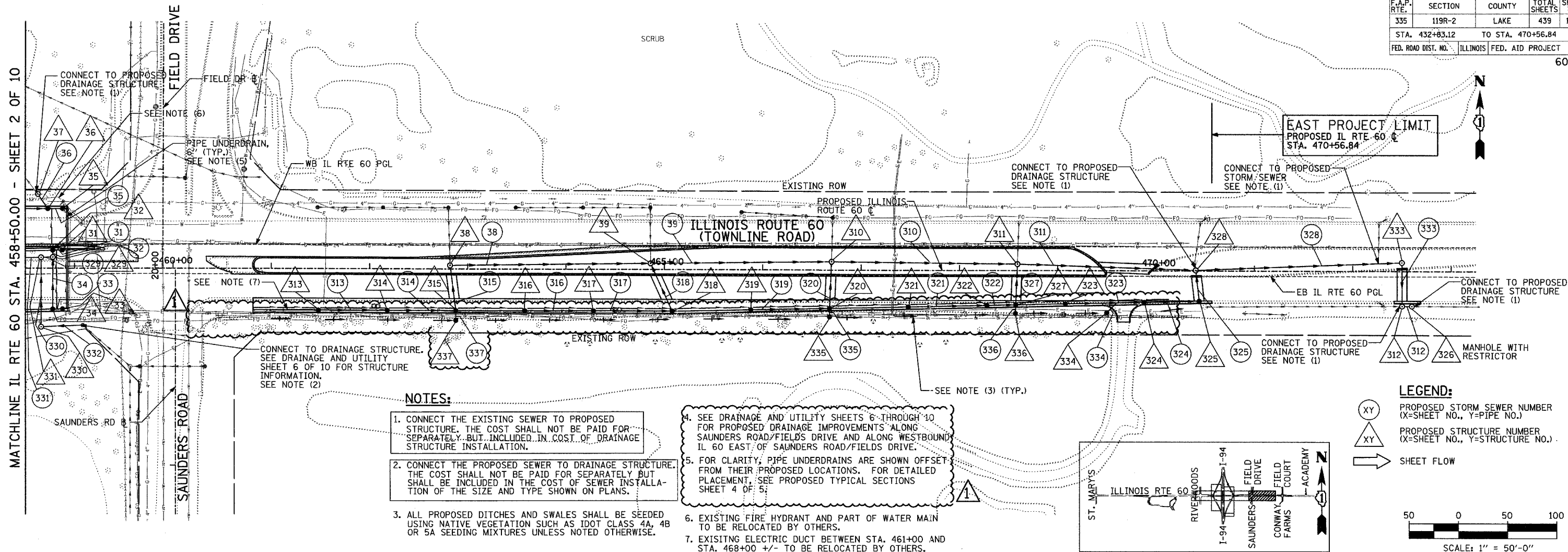


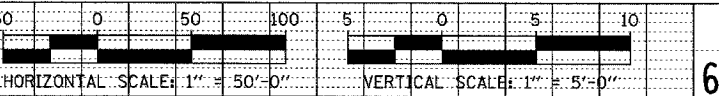
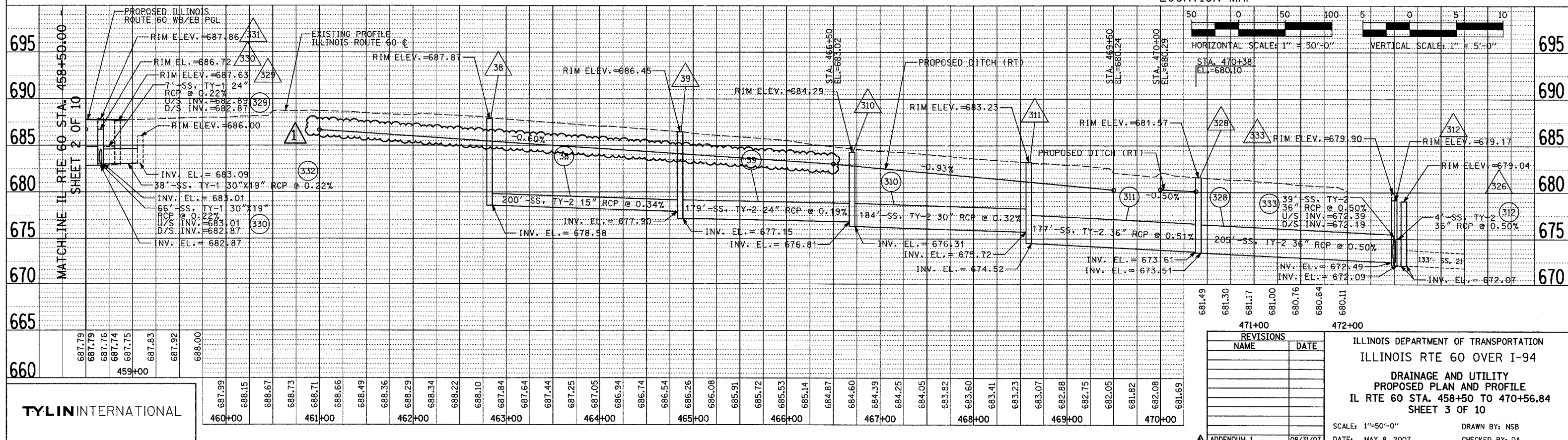
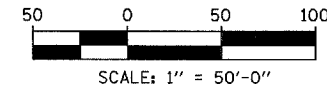
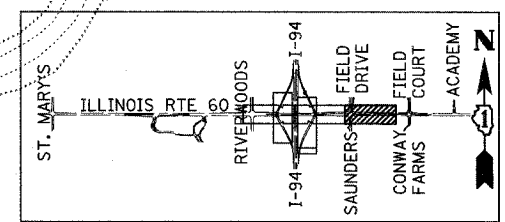
F.A.P. RTE.	SECTION	COUNTY	TOTAL SHEETS	SHEET NO.
335	119R-2	LAKE	439	144
STA. 432+83.12		TO STA. 470+56.84		
FED. ROAD DIST. NO.		ILLINOIS	FED. AID PROJECT	

60B01



- NOTES:**
1. CONNECT THE EXISTING SEWER TO PROPOSED STRUCTURE. THE COST SHALL NOT BE PAID FOR SEPARATELY, BUT INCLUDED IN COST OF DRAINAGE STRUCTURE INSTALLATION.
  2. CONNECT THE PROPOSED SEWER TO DRAINAGE STRUCTURE. THE COST SHALL NOT BE PAID FOR SEPARATELY BUT SHALL BE INCLUDED IN THE COST OF SEWER INSTALLATION OF THE SIZE AND TYPE SHOWN ON PLANS.
  3. ALL PROPOSED DITCHES AND SWALES SHALL BE SEEDED USING NATIVE VEGETATION SUCH AS IDOT CLASS 4A, 4B OR 5A SEEDING MIXTURES UNLESS NOTED OTHERWISE.
  4. SEE DRAINAGE AND UTILITY SHEETS 6 THROUGH 10 FOR PROPOSED DRAINAGE IMPROVEMENTS ALONG SAUNDERS ROAD/FIELDS DRIVE AND ALONG WESTBOUND IL 60 EAST OF SAUNDERS ROAD/FIELDS DRIVE.
  5. FOR CLARITY, PIPE UNDERDRAINS ARE SHOWN OFFSET FROM THEIR PROPOSED LOCATIONS. FOR DETAILED PLACEMENT, SEE PROPOSED TYPICAL SECTIONS SHEET 4 OF 5.
  6. EXISTING FIRE HYDRANT AND PART OF WATER MAIN TO BE RELOCATED BY OTHERS.
  7. EXISTING ELECTRIC DUCT BETWEEN STA. 461+00 AND STA. 468+00 +/- TO BE RELOCATED BY OTHERS.

**LEGEND:**  
 XY PROPOSED STORM SEWER NUMBER (X=SHEET NO., Y=PIPE NO.)  
 △XY PROPOSED STRUCTURE NUMBER (X=SHEET NO., Y=STRUCTURE NO.)  
 → SHEET FLOW



REVISIONS	
NAME	DATE

ILLINOIS DEPARTMENT OF TRANSPORTATION  
 ILLINOIS RTE 60 OVER I-94  
 DRAINAGE AND UTILITY  
 PROPOSED PLAN AND PROFILE  
 IL RTE 60 STA. 458+50 TO 470+56.84  
 SHEET 3 OF 10

SCALE: 1"=50'-0"  
 DATE: MAY 8, 2007  
 DRAWN BY: NSB  
 CHECKED BY: DA

TYLIN INTERNATIONAL

687.99	688.15	688.67	688.73	688.71	688.66	688.49	688.36	688.29	688.34	688.22	688.10	687.84	687.64	687.44	687.25	687.05	686.94	686.74	686.54	686.26	686.08	685.91	685.72	685.53	685.14	684.87	684.60	684.39	684.25	684.05	683.92	683.60	683.41	683.23	683.07	682.88	682.75	682.05	681.82	682.08	681.69
--------	--------	--------	--------	--------	--------	--------	--------	--------	--------	--------	--------	--------	--------	--------	--------	--------	--------	--------	--------	--------	--------	--------	--------	--------	--------	--------	--------	--------	--------	--------	--------	--------	--------	--------	--------	--------	--------	--------	--------	--------	--------

687.79	687.76	687.74	687.75	687.83	687.92	688.00
--------	--------	--------	--------	--------	--------	--------

459+00

660

MATCHLINE IL RTE 60 STA. 458+50.00 SHEET 2 OF 10

PROPOSED ILLINOIS ROUTE 60 WB/EB PGL

EXISTING PROFILE ILLINOIS ROUTE 60

RIM ELEV. = 687.86 331

RIM EL. = 686.72 330

RIM ELEV. = 687.63 329

RCP @ 0.22%

U/S INV. = 682.89 329

D/S INV. = 682.87

RIM ELEV. = 686.00

INV. EL. = 683.09

38" SS, TY-1 30"X19" RCP @ 0.22%

INV. EL. = 683.01

66" SS, TY-1 30"X19" RCP @ 0.22%

U/S INV. = 683.01 330

D/S INV. = 682.87

INV. EL. = 682.87

RIM ELEV. = 687.8

RIM ELEV. = 686.45

RIM ELEV. = 684.29

RIM ELEV. = 683.23

RIM ELEV. = 681.57

RIM ELEV. = 679.90

RIM ELEV. = 679.17

RIM ELEV. = 679.04

RIM ELEV. = 679.17

INV. EL. = 678.58

INV. EL. = 677.90

INV. EL. = 677.15

INV. EL. = 676.81

INV. EL. = 676.31

INV. EL. = 675.72

INV. EL. = 674.52

INV. EL. = 673.61

INV. EL. = 673.51

INV. EL. = 672.49

INV. EL. = 672.09

INV. EL. = 672.07