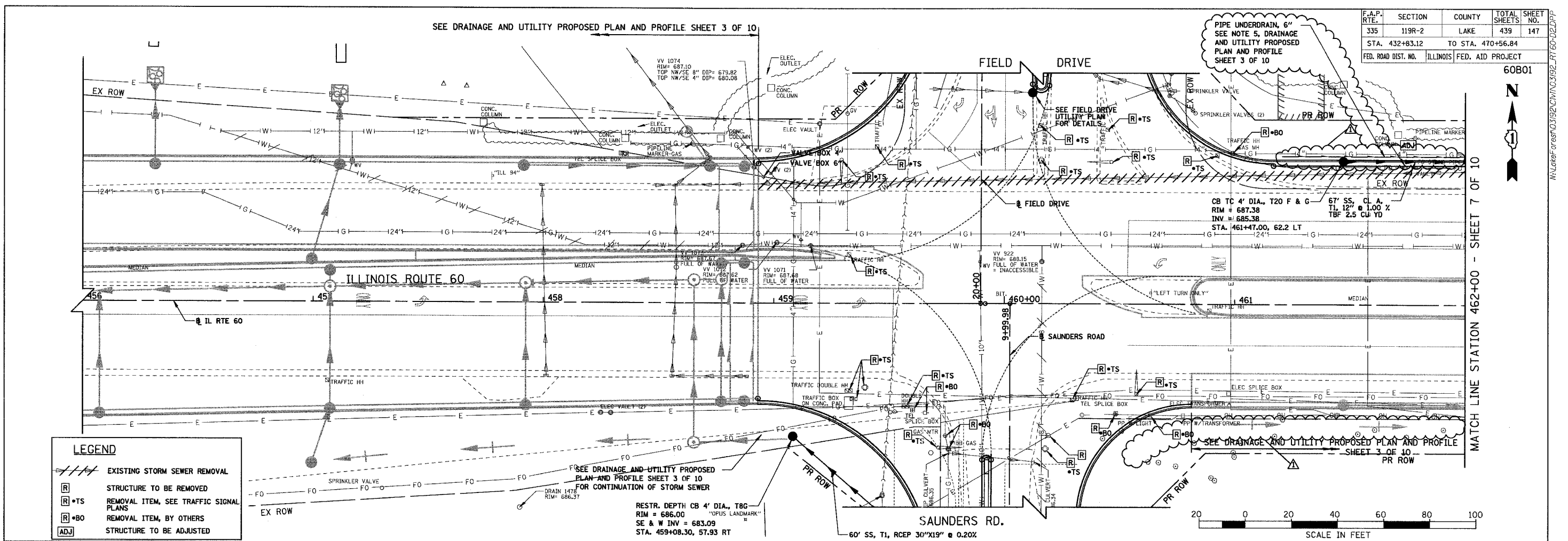


F.A.P. RTE.	SECTION	COUNTY	TOTAL SHEETS	SHEET NO.
335	119R-2	LAKE	439	147
STA. 432+83.12		TO STA. 470+56.84		
FED. ROAD DIST. NO.	ILLINOIS	FED. AID PROJECT		

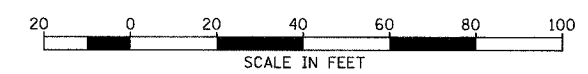


MATCH LINE STATION 462+00 - SHEET 7 OF 10



LEGEND

	EXISTING STORM SEWER REMOVAL
	STRUCTURE TO BE REMOVED
	REMOVAL ITEM, SEE TRAFFIC SIGNAL PLANS
	REMOVAL ITEM, BY OTHERS
	STRUCTURE TO BE ADJUSTED

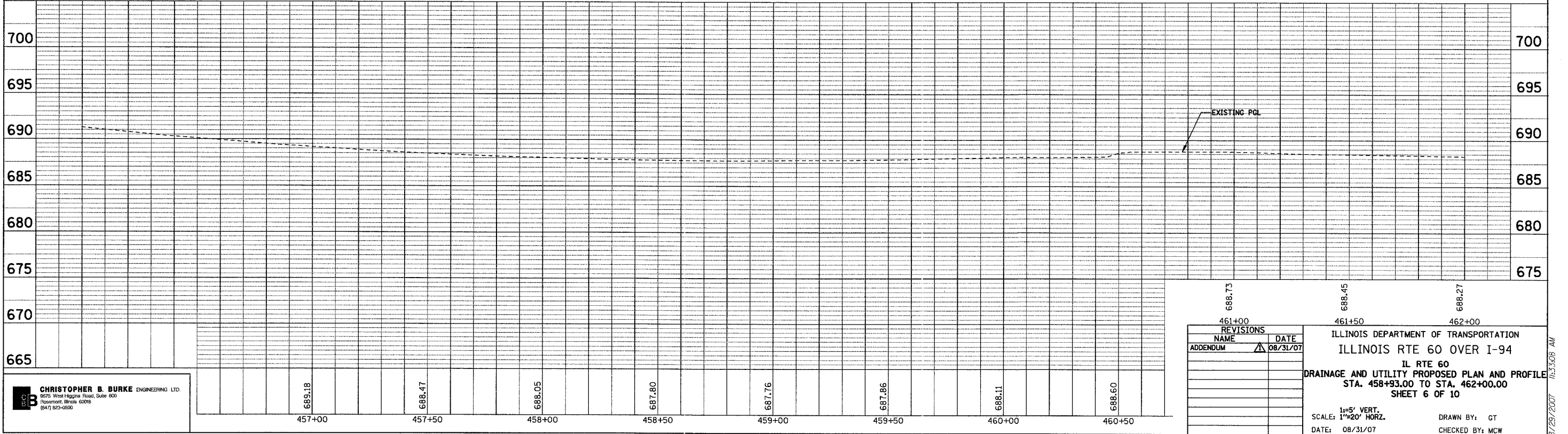


PLAN

REVISIONS	DATE
BY	
CHECKED	
DATE	

PROFILE

REVISIONS	DATE
BY	
CHECKED	
DATE	



688.73	688.45	688.27
461+00	461+50	462+00
REVISIONS NAME: DATE: 08/31/07 ADDENDUM: 		
ILLINOIS DEPARTMENT OF TRANSPORTATION ILLINOIS RTE 60 OVER I-94 IL RTE 60 DRAINAGE AND UTILITY PROPOSED PLAN AND PROFILE STA. 458+93.00 TO STA. 462+00.00 SHEET 6 OF 10		
SCALE: 1"=5' VERT., 1"=20' HORIZ. DATE: 08/31/07		DRAWN BY: GT CHECKED BY: MSW

CHRISTOPHER B. BURKE ENGINEERING LTD.
 8675 West Higgins Road, Suite 600
 Rosemont, Illinois 60018
 (847) 953-0800

8/29/2007 11:35:08 AM