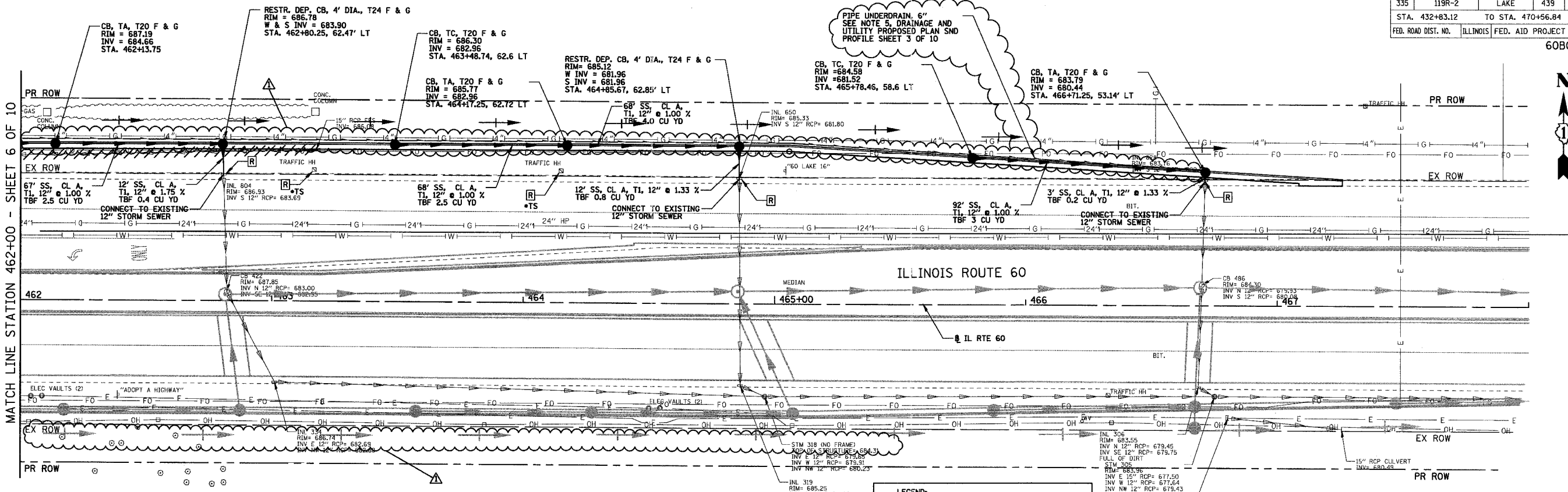


F.A.P. RTE.	SECTION	COUNTY	TOTAL SHEETS	SHEET NO.
335	119R-2	LAKE	439	148
STA. 432+83.12	TO STA. 470+56.84			
FED. ROAD DIST. NO.	ILLINOIS	FED. AID PROJECT	60B01	

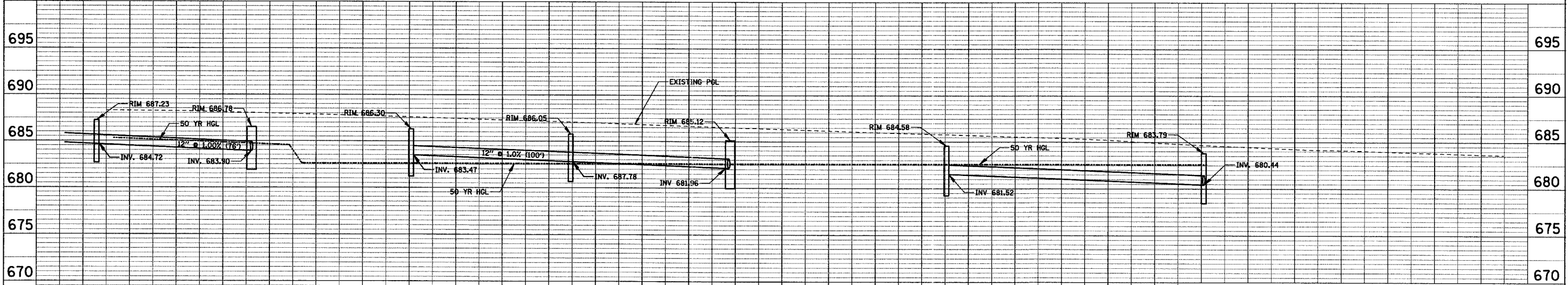
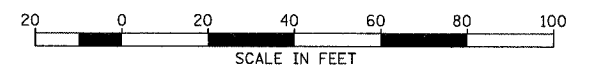
MATCH LINE STATION 462+00 - SHEET 6 OF 10



SEE DRAINAGE AND UTILITY PROPOSED PLAN AND PROFILE SHEET 3 OF 10 FOR SOUTH SIDE OF IL ROUTE 60

LEGEND:

- EXISTING STORM SEWER REMOVAL
- [R] STRUCTURE TO BE REMOVED
- [R] + TS REMOVAL ITEM, SEE TRAFFIC SIGNAL PLANS



PLAN

DATE	BY

PROFILE

DATE	BY

CHRISTOPHER B. BURKE ENGINEERING LTD.
3675 West Higgins Road, Suite 600
Rosemont, Illinois 60018
(847) 853-0600

REVISIONS		
NAME	DATE	
ADDENDUM	08/31/07	

ILLINOIS DEPARTMENT OF TRANSPORTATION
ILLINOIS RTE 60 OVER I-94

IL RTE 60
DRAINAGE AND UTILITY PROPOSED PLAN AND PROFILE
STA. 462+00.00 TO STA. 468+00.00
SHEET 7 OF 10

SCALE: 1"=5' VERT.
1"=20' HORIZ.

DATE: 08/31/07 DRAWN BY: GT
CHECKED BY: MSW

687.81	687.45	687.08	686.66	686.26	685.87	685.50	684.93
463+00	463+50	464+00	464+50	465+00	465+50	466+00	466+50

I:\Projects\1136307\1136307.dwg 8/29/2007 11:36:07 AM