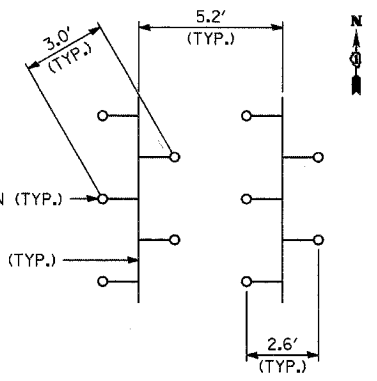
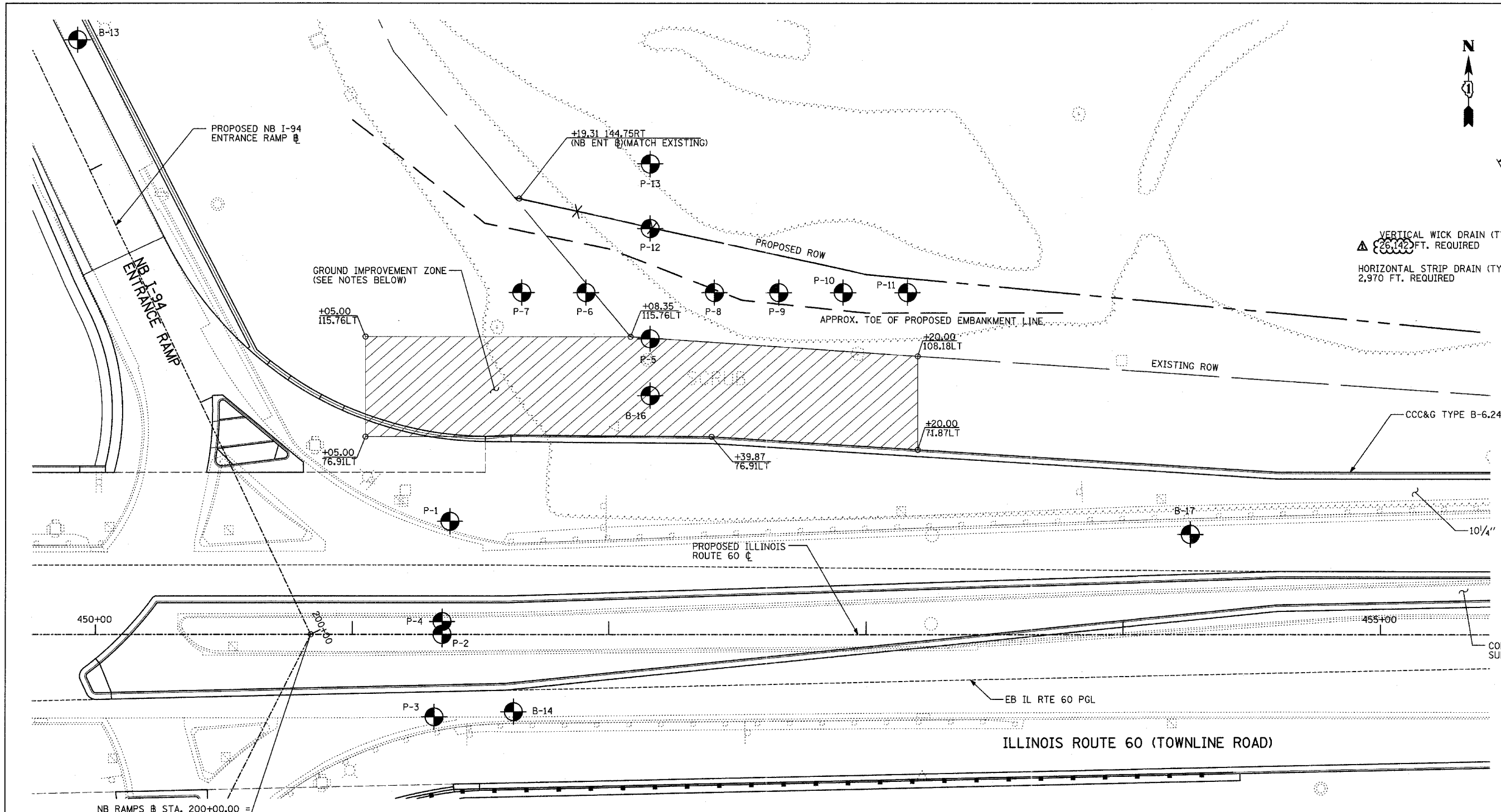


F.A.P. RTE.	SECTION	COUNTY	TOTAL SHEETS	SHEET NO.
335	119R-2	LAKE	439	160
STA. 432+83.12		TO STA. 470+56.84		
FED. ROAD DIST. NO.		ILLINOIS FED. AID PROJECT		

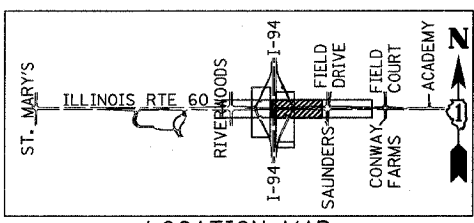
60B01



WICK DRAIN LAYOUT
TO BE INSTALLED IN AN EQUILATERAL TRIANGLE PATTERN

NOTES:

- VERTICAL WICK DRAINS SHALL BE INSTALLED AT THE SPACING SHOWN WITHIN THE LIMITS IDENTIFIED ON THIS SHEET.
- A HORIZONTAL STRIP DRAIN SHALL BE INSTALLED PERPENDICULAR TO THE IL60 CENTERLINE BETWEEN EVERY PAIR OF VERTICAL DRAIN ROWS TO CONVEY DISCHARGE TO THE DITCH AT THE TOE OF THE PROPOSED EMBANKMENT. STRIP DRAINS SHALL BE INSTALLED IN A MANNER TO PROVIDE POSITIVE DRAINAGE AWAY FROM THE VERTICAL DRAIN ZONE.
- THE FIRST LIFT OF EMBANKMENT PLACED OVER THE HORIZONTAL STRIP DRAINS SHALL CONSIST OF FA-1 OR FA-2 SAND. THE SAND BLANKET SHALL BE INCLUDED IN THE COST OF EMBANKMENT.
- EMBANKMENT MATERIAL MAY BE USED TO BUILD A CONSTRUCTION PLATFORM OVER SOFT SOILS IN GROUND IMPROVEMENT ZONE BEFORE INSTALLATION OF WICK DRAINS, HORIZONTAL STRIP DRAINS, AND SAND LAYER. EMBANKMENT MUST BE COMPACTED IN ACCORDANCE WITH ARTICLE 205.06 OF THE STANDARD SPECIFICATIONS.
- EXCAVATION REQUIRED TO ESTABLISH CONSTRUCTION PLATFORM SHALL BE INCLUDED IN THE COST OF EXCAVATION.
- GROUND IMPROVEMENT TO BE COORDINATED WITH CULVERT INSTALLATION AT STA. 451+35.
- PAVING OF OUTSIDE TWO LANES OF WB IL 60 SHALL NOT COMMENCE UNTIL INSTALLATION OF WICK DRAIN SYSTEM, COMPLETION OF EMBANKMENT AND SUBGRADE CONSTRUCTION, AND COMPLETION OF SETTLEMENT WAITING PERIOD PER SPECIAL PROVISION.
- EACH WICK DRAIN SHALL BE INSTALLED TO ELEVATION 665 AFTER TOPSOIL AND VEGETATION REMOVAL, OR AS DIRECTED BY THE ENGINEER.



LOCATION MAP

TYLIN INTERNATIONAL

LEGEND

- WICK DRAIN INSTALLATION LIMITS
- SOIL BORING LOCATION
- WICK DRAIN
- PROPOSED RIGHT-OF-WAY
- EXISTING RIGHT-OF-WAY

REVISIONS	
NAME	DATE
ADDENDUM 1	08/31/07

ILLINOIS DEPARTMENT OF TRANSPORTATION
ILLINOIS RTE 60 OVER I-94
PROPOSED GROUND IMPROVEMENT PLAN
IL RTE 60 STA. 445+00 TO 458+50

SCALE: 1"=20'-0"
DATE: MAY 8, 2007

DRAWN BY: KMA
CHECKED BY: PDF

