

| F.A.P. RTE. | SECTION | COUNTY | TOTAL SHEETS | SHEET NO. |
|---------------------|---------|---------------------------|--------------|-----------|
| 335 | 119R-2 | LAKE | 439 | 190 |
| STA. 432+83.12 | | TO STA. 470+56.84 | | |
| FED. ROAD DIST. NO. | | ILLINOIS FED. AID PROJECT | | |

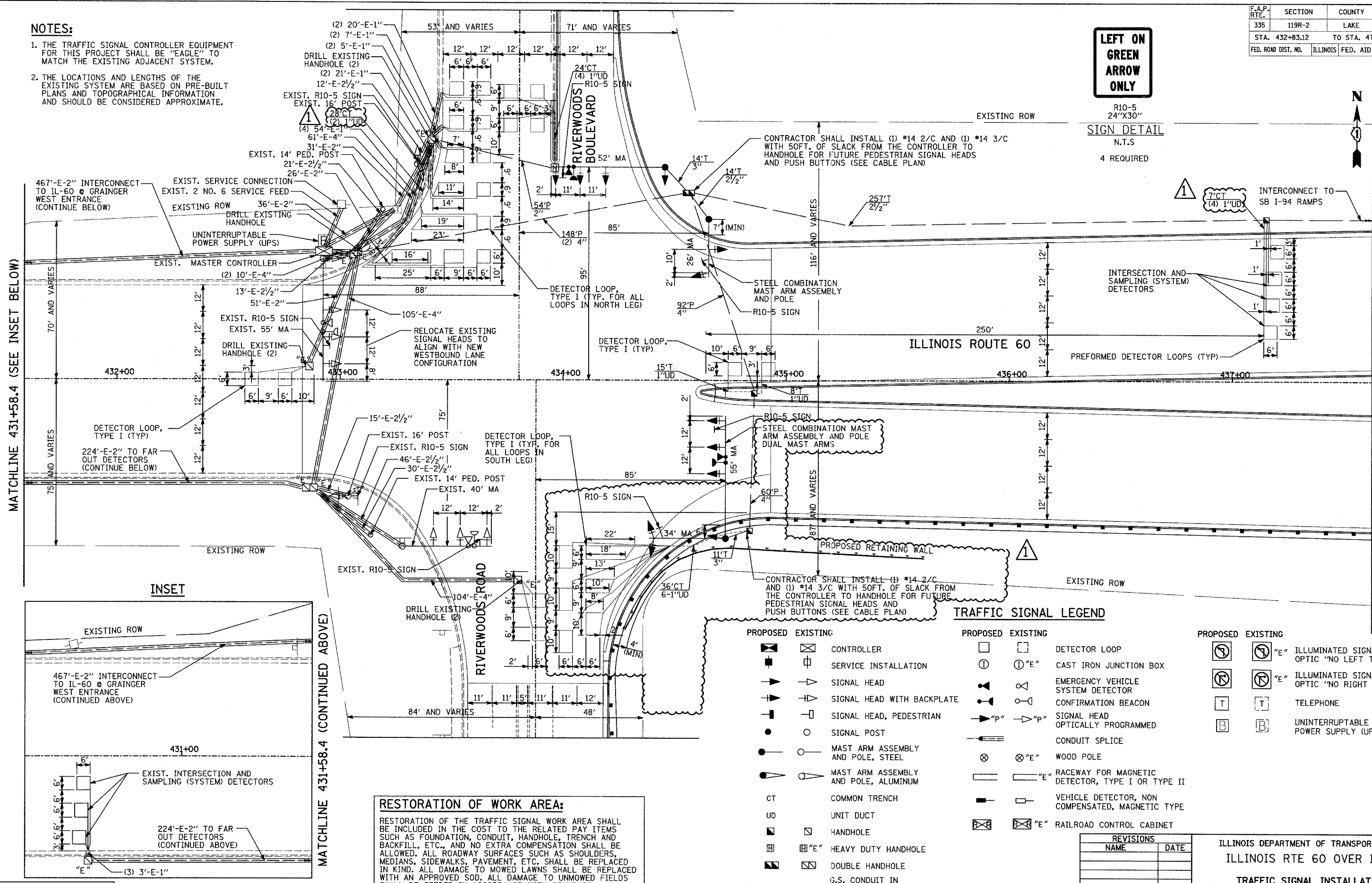
60B01

NOTES:

1. THE TRAFFIC SIGNAL CONTROLLER EQUIPMENT FOR THIS PROJECT SHALL BE "EAGLE" TO MATCH THE EXISTING ADJACENT SYSTEM.
2. THE LOCATIONS AND LENGTHS OF THE EXISTING SYSTEM ARE BASED ON PRE-BUILT PLANS AND TOPOGRAPHICAL INFORMATION AND SHOULD BE CONSIDERED APPROXIMATE.

LEFT ON GREEN ARROW ONLY

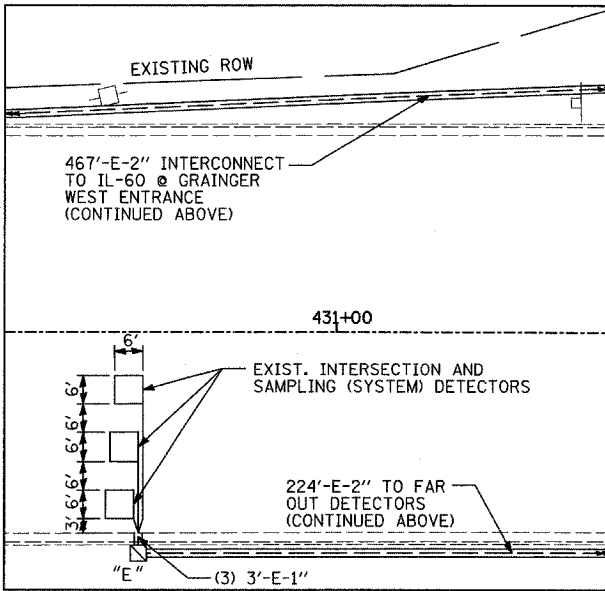
R10-5
24"X30"
SIGN DETAIL
N.T.S
4 REQUIRED



MATCHLINE 431+58.4 (SEE INSET BELOW)

MATCHLINE 431+58.4 (CONTINUED ABOVE)

INSET



RESTORATION OF WORK AREA:
RESTORATION OF THE TRAFFIC SIGNAL WORK AREA SHALL BE INCLUDED IN THE COST TO THE RELATED PAY ITEMS SUCH AS FOUNDATION, CONDUIT, HANDHOLE, TRENCH AND BACKFILL, ETC., AND NO EXTRA COMPENSATION SHALL BE ALLOWED. ALL ROADWAY SURFACES SUCH AS SHOULDERS, MEDIANS, SIDEWALKS, PAVEMENT, ETC. SHALL BE REPLACED IN KIND. ALL DAMAGE TO MOWED LAWNS SHALL BE REPLACED WITH AN APPROVED SOD. ALL DAMAGE TO UNMOWED FIELDS SHALL BE SEEDED IN ACCORDANCE WITH STANDARD SPECIFICATIONS 250 AND 252 RESPECTIVELY.

| PROPOSED | | EXISTING | | |
|----------|--------------------------------------|----------|--------------------------------------|--|
| | CONTROLLER | | CONTROLLER | |
| | SERVICE INSTALLATION | | SERVICE INSTALLATION | |
| | SIGNAL HEAD | | SIGNAL HEAD | |
| | SIGNAL HEAD WITH BACKPLATE | | SIGNAL HEAD WITH BACKPLATE | |
| | SIGNAL HEAD, PEDESTRIAN | | SIGNAL HEAD, PEDESTRIAN | |
| | SIGNAL POST | | SIGNAL POST | |
| | MAST ARM ASSEMBLY AND POLE, STEEL | | MAST ARM ASSEMBLY AND POLE, STEEL | |
| | MAST ARM ASSEMBLY AND POLE, ALUMINUM | | MAST ARM ASSEMBLY AND POLE, ALUMINUM | |
| CT | COMMON TRENCH | | COMMON TRENCH | |
| UD | UNIT DUCT | | UNIT DUCT | |
| | HANDHOLE | | HANDHOLE | |
| | HEAVY DUTY HANDHOLE | | HEAVY DUTY HANDHOLE | |
| | DOUBLE HANDHOLE | | DOUBLE HANDHOLE | |
| | G.S. CONDUIT IN TRENCH OR PUSHED | | G.S. CONDUIT IN TRENCH OR PUSHED | |
| | PEDESTRIAN PUSH-BUTTON DETECTOR | | PEDESTRIAN PUSH-BUTTON DETECTOR | |

| PROPOSED | | EXISTING | | |
|----------|--|----------|--|--|
| | DETECTOR LOOP | | DETECTOR LOOP | |
| | CAST IRON JUNCTION BOX | | CAST IRON JUNCTION BOX | |
| | EMERGENCY VEHICLE SYSTEM DETECTOR | | EMERGENCY VEHICLE SYSTEM DETECTOR | |
| | CONFIRMATION BEACON | | CONFIRMATION BEACON | |
| | SIGNAL HEAD OPTICALLY PROGRAMMED | | SIGNAL HEAD OPTICALLY PROGRAMMED | |
| | CONDUIT SPLICE | | CONDUIT SPLICE | |
| | WOOD POLE | | WOOD POLE | |
| | RACEWAY FOR MAGNETIC DETECTOR, TYPE I OR TYPE II | | RACEWAY FOR MAGNETIC DETECTOR, TYPE I OR TYPE II | |
| | VEHICLE DETECTOR, NON COMPENSATED, MAGNETIC TYPE | | VEHICLE DETECTOR, NON COMPENSATED, MAGNETIC TYPE | |
| | RAILROAD CONTROL CABINET | | RAILROAD CONTROL CABINET | |

| REVISIONS | |
|-----------|------|
| NAME | DATE |
| | |
| | |
| | |
| | |
| | |
| | |
| | |
| | |
| | |

TYLIN INTERNATIONAL

ILLINOIS DEPARTMENT OF TRANSPORTATION
ILLINOIS RTE 60 OVER I-94
TRAFFIC SIGNAL INSTALLATION
IL RTE 60 & RIVERWOODS BLVD/RD
SCALE: 1"=20'-0"
DRAWN BY: CBS
DATE: MAY 8, 2007
CHECKED BY: DMJ

ADDENDUM 1 08/31/07