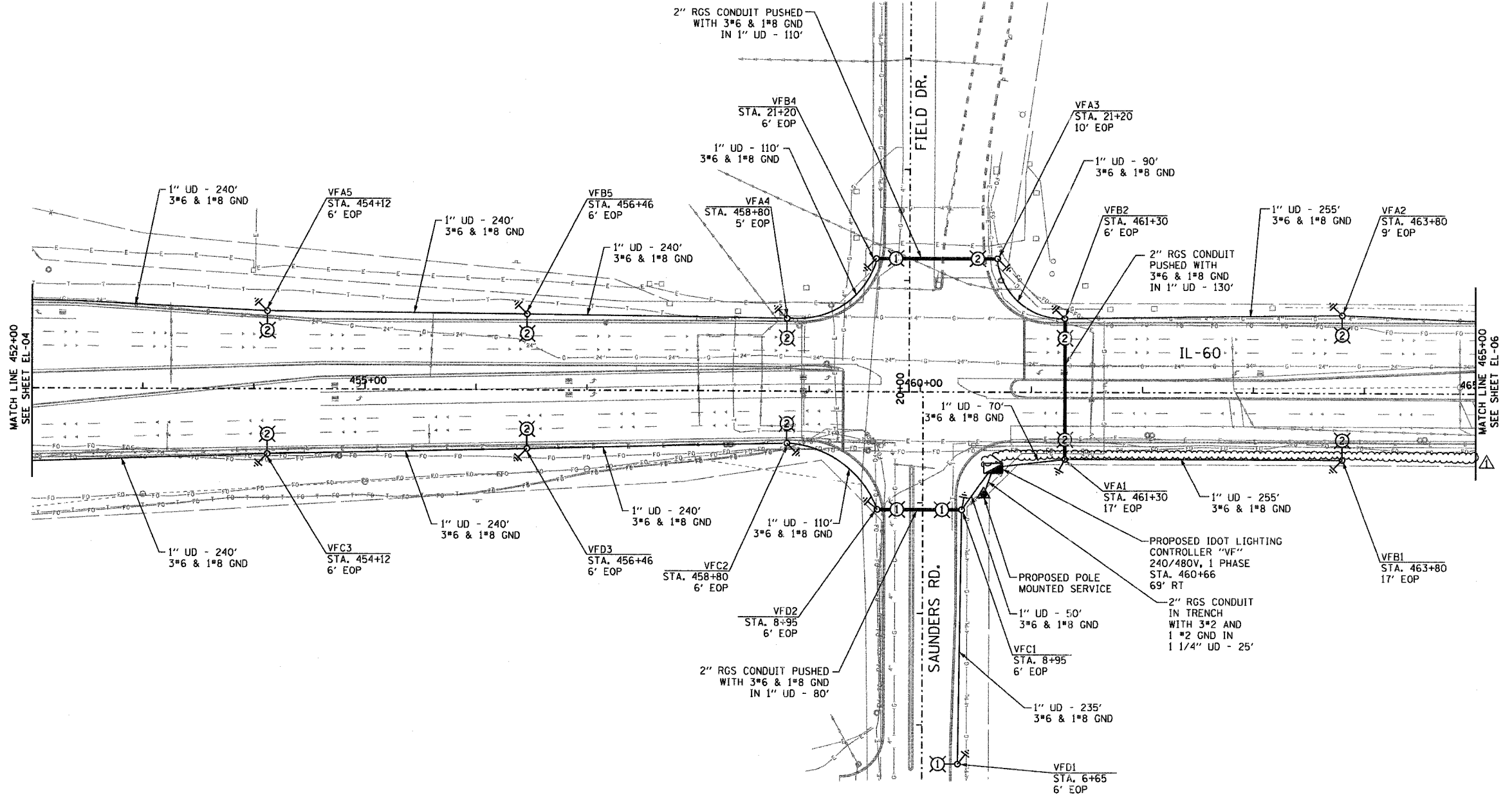
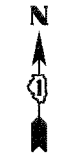


F.A.P. RTE.	SECTION	COUNTY	TOTAL SHEETS	SHEET NO.
335	119R-2	LAKE	439	239
STA. 452+00	TO STA. 465+00			
FED. ROAD DIST. NO.	ILLINOIS	FED. AID PROJECT		

60B01



SHEET EL-05 OF 13

REVISIONS	
NAME	DATE
ADDENDUM 1	8/31/07

ILLINOIS DEPARTMENT OF TRANSPORTATION
 ILLINOIS RTE 60 OVER I-94
 PROPOSED ROADWAY LIGHTING PLAN
 STA. 452+00 TO STA. 465+00

S.N. _____ DESIGNED BY: JDM
 SCALE: 1"=50'-0" DRAWN BY: JDM
 DATE: MAY 8, 2007 CHECKED BY: RES

EJM EJM ENGINEERING, INC.
 411 South Wells Street Suite 800
 Chicago, Illinois 60607

DATE: 8/31/07