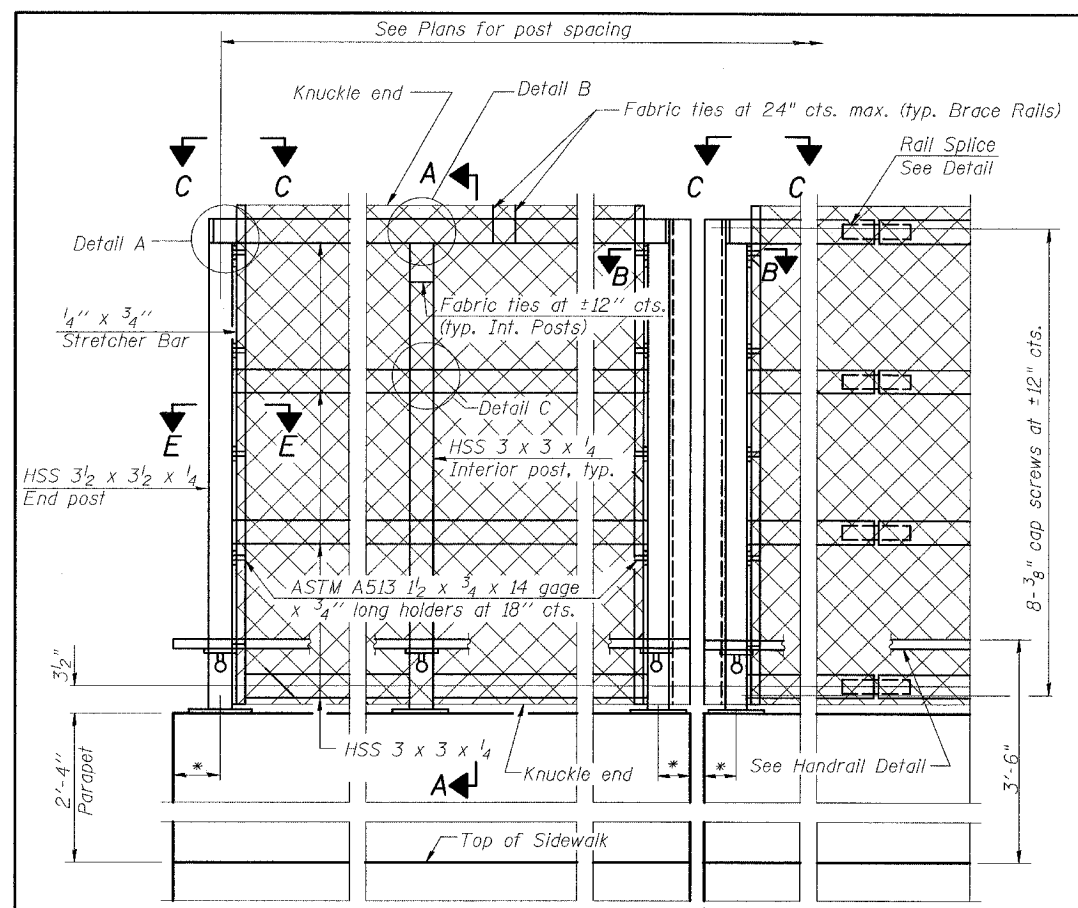


F.A.P. RTE.	SECTION	COUNTY	TOTAL SHEETS	SHEET NO.
335	119R-2	LAKE	439	268
STA. 432+83.12		TO STA. 470+56.84		
FED. ROAD DIST. NO.	ILLINOIS	FED. AID PROJECT		

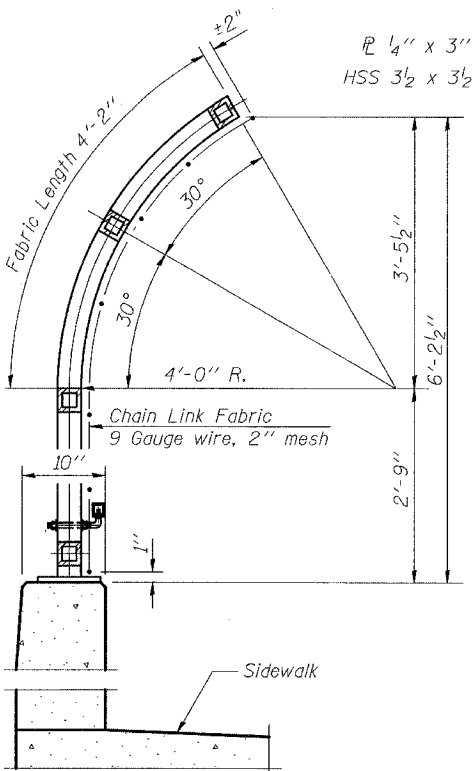
60B01

**NOTES:**

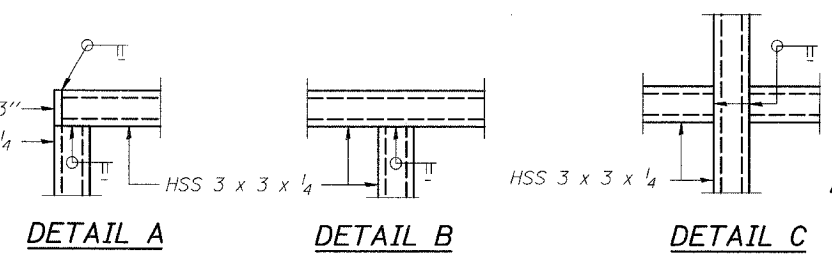
- All steel rail elements shall be galvanized according to Article 509.05 of the Standard Specifications.



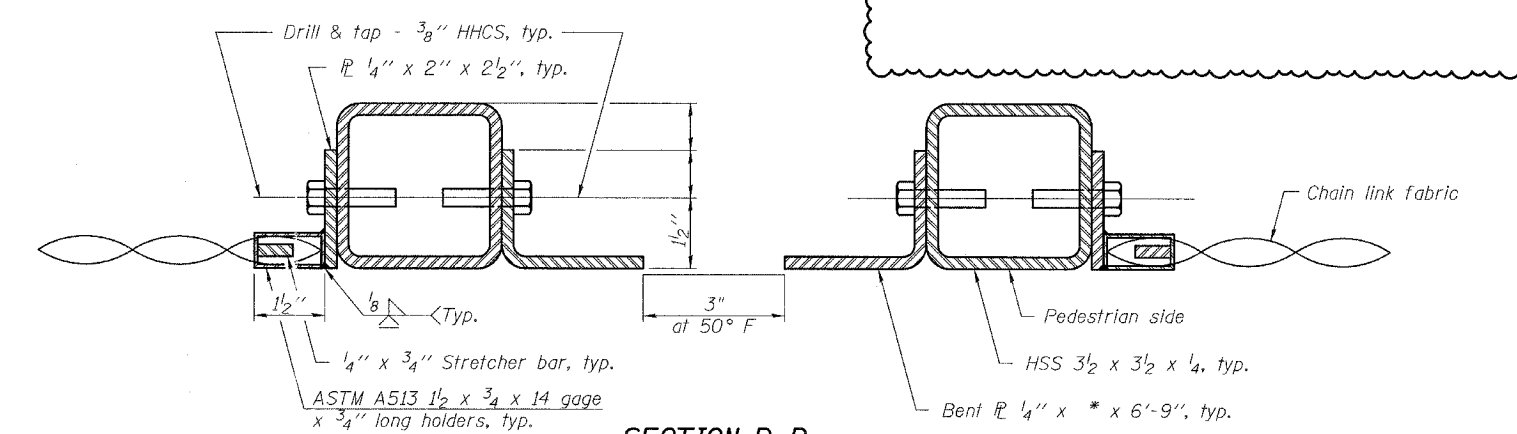
**ELEVATION**  
(Inside Face)



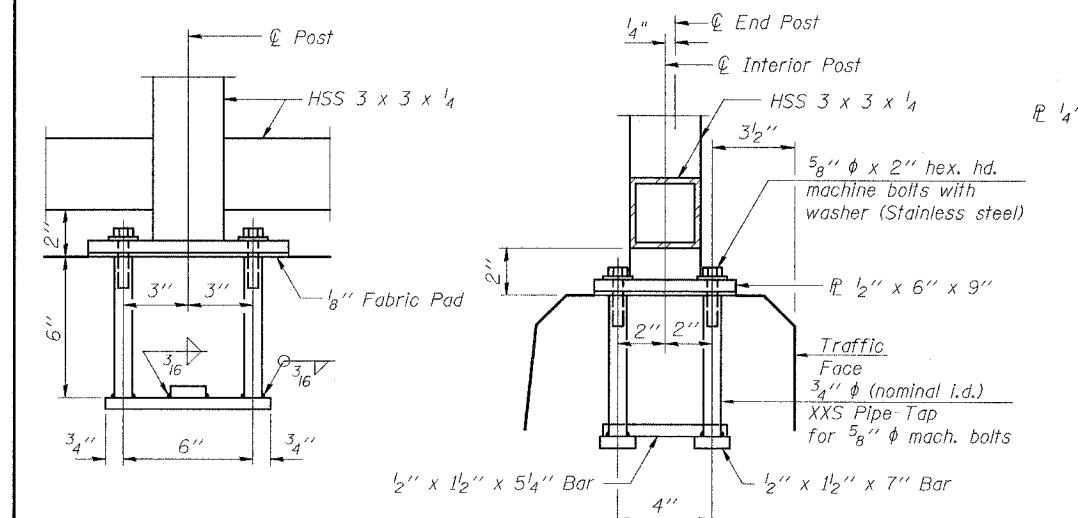
**SECTION A-A**



**DETAIL A**      **DETAIL B**      **DETAIL C**

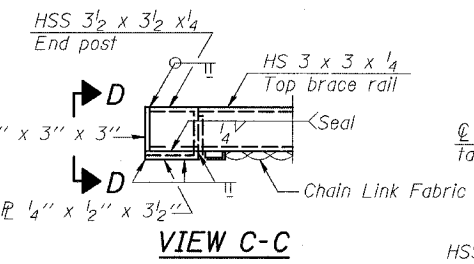


**SECTION B-B**  
(At Expansion Joint)

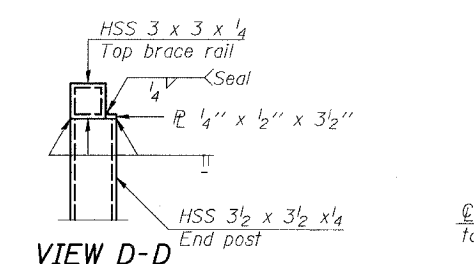


**ANCHOR BOLT DETAILS**

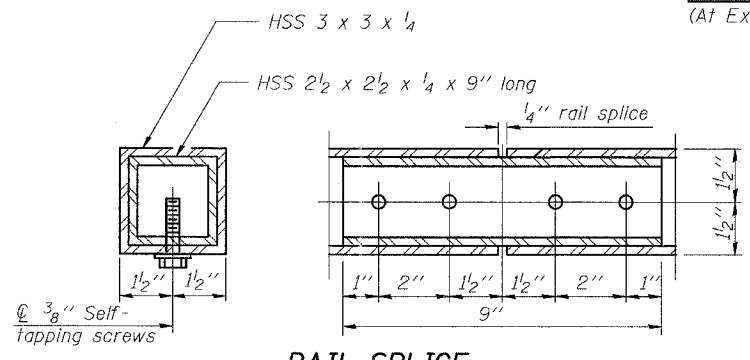
In lieu of the cast-in-place anchor device shown, the Contractor has the option of drilling and setting 5/8" phi anchor rods according to Article 509.06 of the Standard Specifications. Embedment shall be according to the manufacturer's specifications.



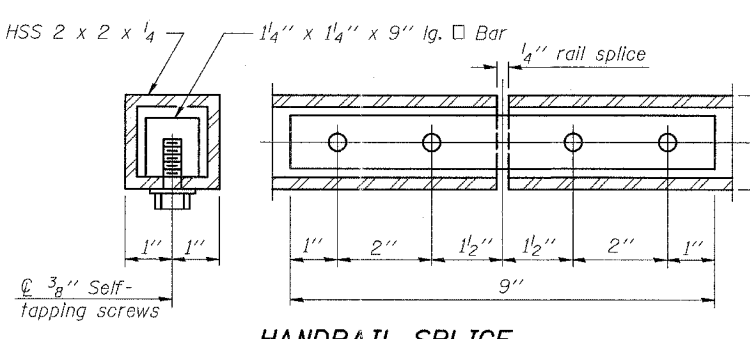
**VIEW C-C**



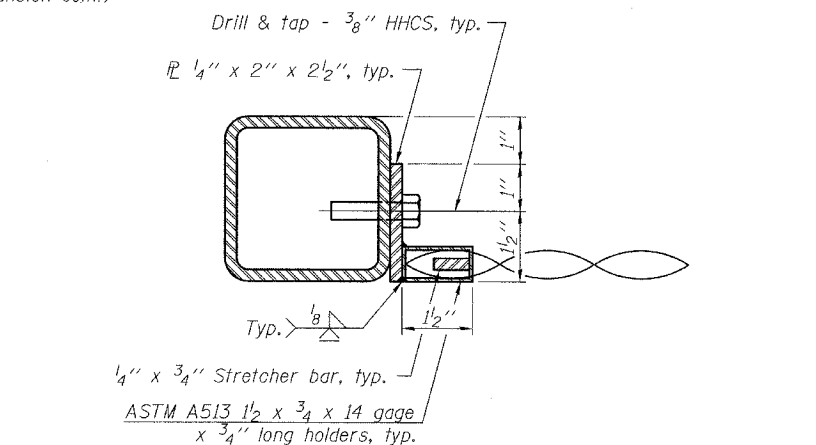
**VIEW D-D**



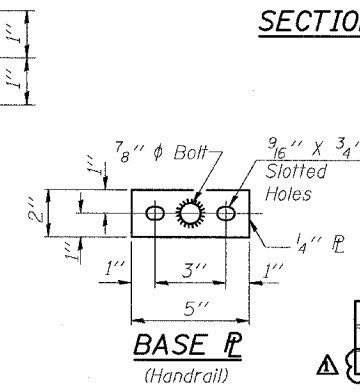
**RAIL SPLICE**



**HANDRAIL SPLICE**



**SECTION E-E**



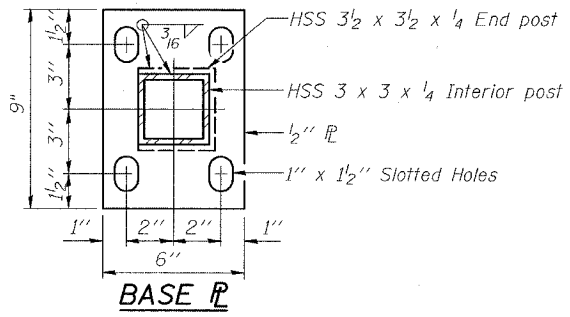
**BASE P**  
(Handrail)

**BILL OF MATERIAL**

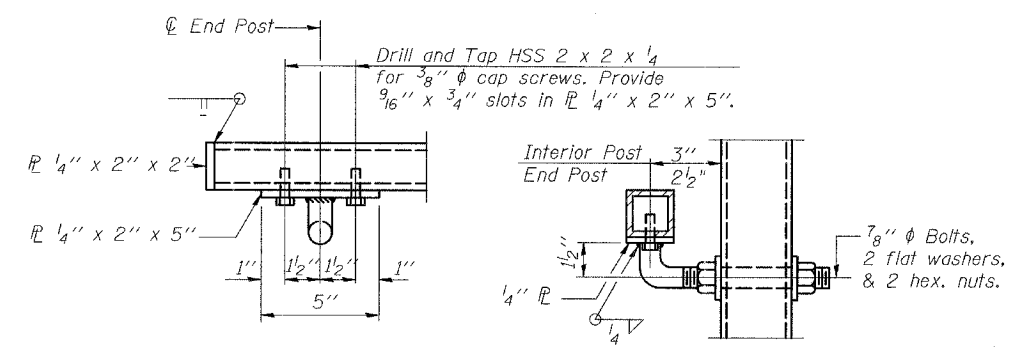
Item	Unit	Quantity
Bridge Fence Railing	Foot	529

SHEET S-21 OF S-53

**TYLIN INTERNATIONAL**



**BASE P**



**HANDRAIL DETAIL**

REVISIONS	
NAME	DATE
ADDENDUM 1	08/31/07

ILLINOIS DEPARTMENT OF TRANSPORTATION  
**BRIDGE FENCE RAILING DETAILS**  
 ILLINOIS 60 OVER I-94  
 F.A.P. RTE. 335 SECTION 119R-2  
 LAKE COUNTY STA. 445+54.14  
 S.N. 049-2012 ISTHA BRIDGE NO. 407  
 DESIGNED BY: DE  
 DRAWN BY: DE  
 SCALE:  
 DATE: MAY 8, 2007  
 CHECKED BY: SP

P:\60245811L-601-Structur\Final\60B01Rail.dgn 08/30/2007 12:25:05 PM