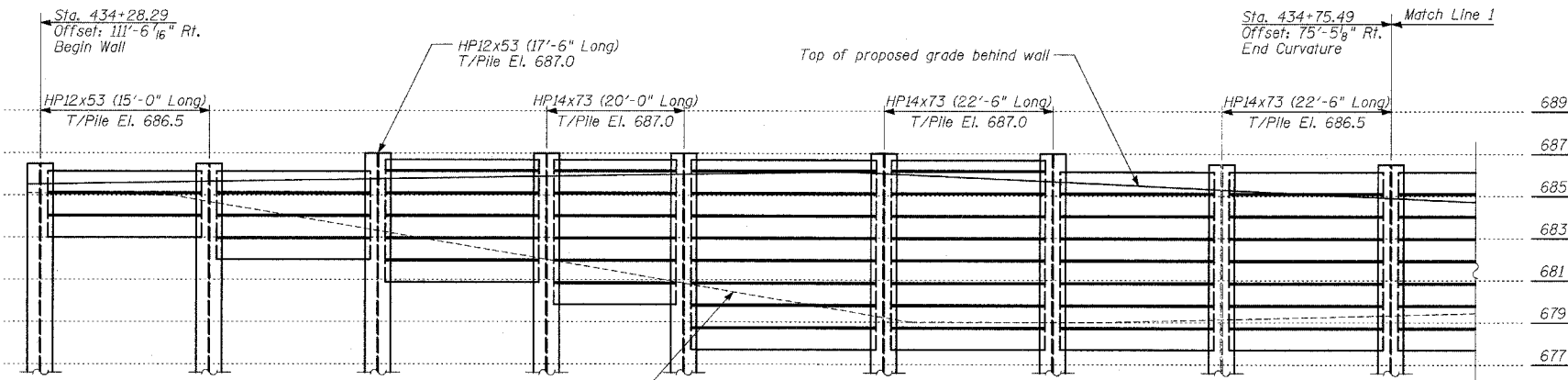
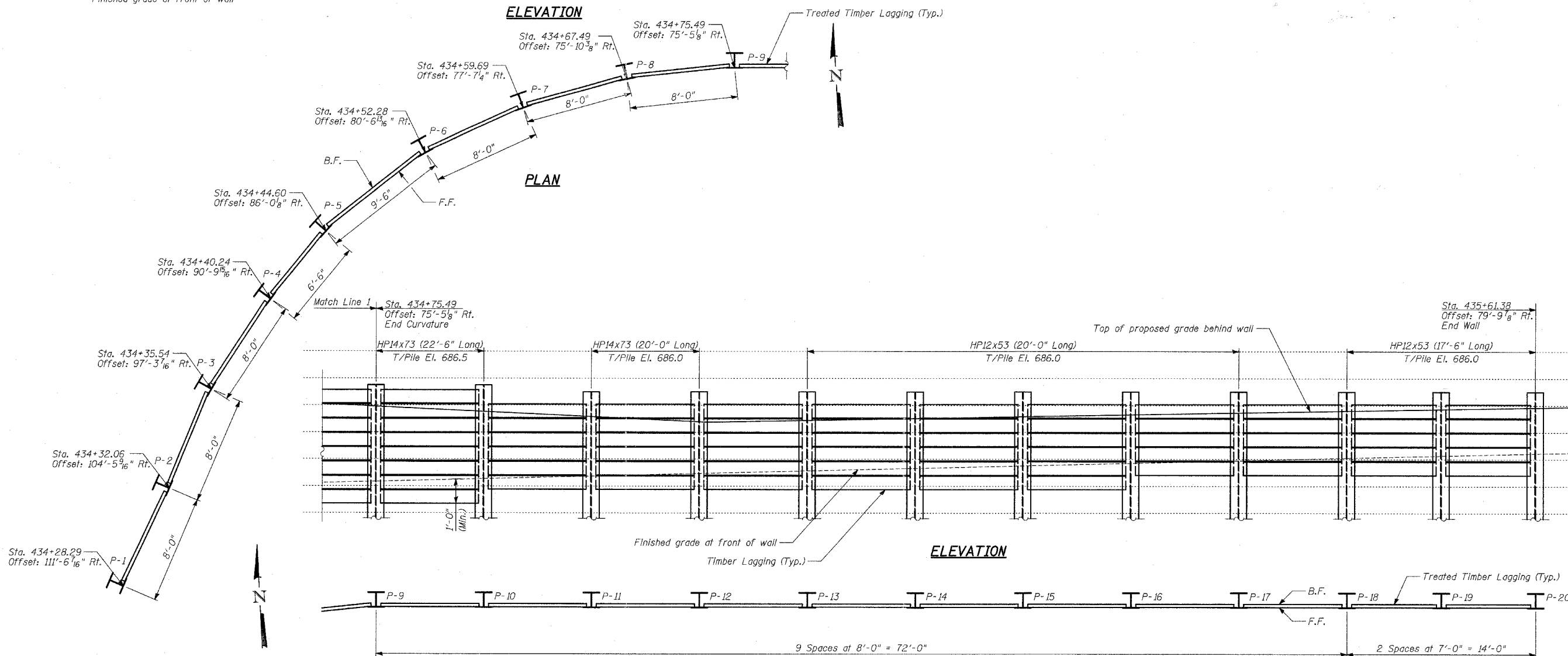


F.A.P. RTE.	SECTION	COUNTY	TOTAL SHEETS	SHEET NO.
335	119R-2	LAKE	439	301A
STA. 432+83.12		TO STA. 470+56.84		
FED. ROAD DIST. NO.		ILLINOIS	FED. AID PROJECT	

60B01



ELEVATION



PLAN

ELEVATION

PLAN

TYLIN INTERNATIONAL

NOTES:

1. B.F. - denotes Back Face.
2. F.F. - denotes Front Face.
3. Work this Sheet with Wall Cross Sections and Details Sheet.
4. Pile spacing measured along front face of wall.

REVISIONS	
NAME	DATE
ADDENDUM 1	08/31/07

ILLINOIS DEPARTMENT OF TRANSPORTATION
 ILLINOIS RTE 60 OVER I-94
 RETAINING WALL 1
 FROM STA. 434+28.29 TO STA. 435+61.38
 PLAN AND ELEVATION

S.N. DESIGNED BY: AD
 SCALE: DRAWN BY: MAF
 DATE: MAY 8, 2007 CHECKED BY: AD, PF