

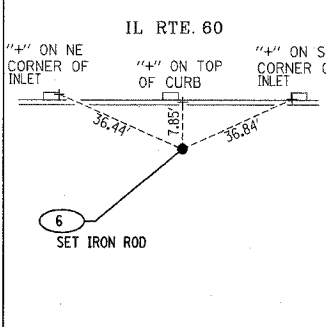
| F.A.P. RTE.         | SECTION | COUNTY                    | TOTAL SHEETS | SHEET NO. |
|---------------------|---------|---------------------------|--------------|-----------|
| 335                 | 119R-2  | LAKE                      | 439          | 39        |
| STA. 432+83.12      |         | TO STA. 470+56.84         |              |           |
| FED. ROAD DIST. NO. |         | ILLINOIS FED. AID PROJECT |              |           |

60B01

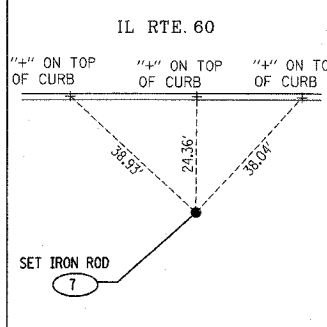
### CONTROL POINT DESCRIPTIONS

- ASC 1** N=2,030,520.60 E=1,094,837.99 ELEV=UNKNOWN  
SET CROSS ON CONCRETE SLAB AT NORTHEASTERLY CORNER OF ILLINOIS ROUTE 60 & ST. MARY'S ROAD.
- ASC 2** N=2,030,431.16 E=1,095,484.12 ELEV=UNKNOWN  
SET 5/8" DIAMETER IRON ROD WITH CAP ON SOUTH SIDE OF ILLINOIS ROUTE 60 OPPOSITE THE 6TH POWER POLE EAST OF ST. MARY'S ROAD.
- ASC 3** N=2,030,431.96 E=1,096,081.19 ELEV=UNKNOWN  
SET 5/8" DIAMETER IRON ROD WITH CAP APPROXIMATELY 20' WEST OF 11TH POWER POLE EAST OF ST. MARY'S ROAD, APPROXIMATELY 4' SOUTH OF SOUTHERLY BACK OF CURB OF ILLINOIS ROUTE 60.
- ASC 4** N=2,030,458.99 E=1,097,302.10 ELEV=UNKNOWN  
SET MAG NAIL IN APPROXIMATE CENTER OF BITUMINOUS MEDIAN OF ILLINOIS ROUTE 60, APPROXIMATELY 200' WEST OF WESTERLY GRAINGER PARKWAY ENTRANCE CENTERLINE.
- ASC 5** N=2,030,495.49 E=1,097,991.32 ELEV=668.83  
SET 3/8" DIAMETER IRON ROD WITH CAP APPROXIMATELY 4' NORTH OF NORTHERLY BACK OF CURB OF ILLINOIS ROUTE 60, APPROXIMATELY 475' EAST OF WESTERLY GRAINGER PARKWAY ENTRANCE CENTERLINE (AT "45MPH" SPEED LIMIT SIGN).
- IDOT 328** N=2,030,469.90 E=1,102,209.35 ELEV=694.16  
FOUND HUB WITH TACK IN APPROXIMATE CENTERLINE OF GRASS MEDIAN OF ILLINOIS ROUTE 60, APPROXIMATELY 475' WEST OF SAUNDERS ROAD CENTERLINE.
- ASC 24** N=2,031,330.90 E=1,101,388.27 ELEV=691.76  
SET MAG NAIL IN EASTERLY BITUMINOUS SHOULDER OF THE NORTHBOUND I-94 ENTRANCE RAMP FROM ILLINOIS ROUTE 60, APPROXIMATELY 3' WEST OF THE EASTERLY EDGE OF PAVEMENT OPPOSITE THE 2ND LIGHT POLE NORTH OF THE TOLL PLAZA.
- ASC 25** N=2,032,038.66 E=1,101,326.89 ELEV=693.16  
SET IRON ROD APPROXIMATELY 5' EAST OF EASTERLY EDGE OF PAVEMENT OF NORTHBOUND I-94, APPROXIMATELY 150' NORTH OF THE SB OVERHEAD SIGN AT THE SB I-94 EXIT RAMP TERMINAL.
- ASC 26** N=2,029,911.22 E=1,101,513.12 ELEV=695.45  
SET CROSS IN THE TOP OF CURB ON THE EAST SIDE OF THE NORTHBOUND I-94 EXIT RAMP, APPROXIMATELY 550' SOUTH OF ILLINOIS ROUTE 60 CENTERLINE.
- ASC 27** N=2,029,560.48 E=1,101,137.35 ELEV=689.71  
SET MAG NAIL IN WESTERLY BITUMINOUS SHOULDER OF THE SOUTHBOUND ENTRANCE RAMP FROM ILLINOIS ROUTE 60, APPROXIMATELY 40' SOUTH OF THE 4TH LIGHT POLE ON THE WEST SIDE OF RAMP.
- ASC 29** N=2,032,337.76 E=1,101,173.96 ELEV=693.37  
SET IRON ROD APPROXIMATELY 6' WEST OF THE WESTERLY EDGE OF PAVEMENT OF SOUTHBOUND I-94, APPROXIMATELY 10' SOUTH OF THE 3RD LIGHT POLE NORTH OF THE OVERHEAD SIGN.
- ASC 30** N=2,031,614.06 E=1,101,148.42 ELEV=691.39  
SET IRON ROD APPROXIMATELY 5' WEST OF THE WESTERLY EDGE OF PAVEMENT OF SOUTHBOUND I-94, APPROXIMATELY 60' NORTH OF THE 2ND LIGHT POLE SOUTH OF THE OVERHEAD SIGN.
- ASC 31** N=2,028,856.02 E=1,101,164.08 ELEV=684.31  
SET IRON ROD APPROXIMATELY 350' SOUTH OF THE OVERHEAD SIGN FOR NORTHBOUND I-94, APPROXIMATELY 10' FEET WEST OF THE SOUTH BOUND I-94 EDGE OF PAVEMENT.
- ASC 33** N=2,028,461.80 E=1,101,323.41 ELEV=684.26  
SET 100-D NAIL APPROXIMATELY 15' EAST OF THE NORTHBOUND I-94 EDGE OF PAVEMENT, APPROXIMATELY 750' SOUTH OF THE OVERHEAD SIGN (APPROXIMATELY 80' SOUTH OF THE 4TH LIGHT POLE SOUTH OF THE OVERHEAD SIGN).
- ASC 34** N=2,029,228.62 E=1,101,330.87 ELEV=686.77  
SET 100-D NAIL ON EAST SIDE OF NORTHBOUND I-94 EXIT RAMP APPROXIMATELY 4' FROM THE EASTERLY BACK OF CURB AT THE END OF GUARD RAIL JUST NORTH OF THE OVERHEAD SIGN.

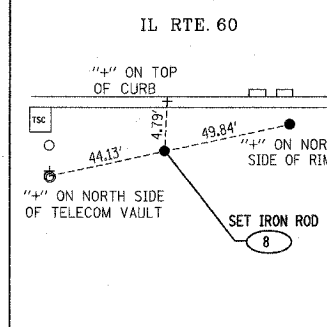
**ASC 6** N = 2,030,405.72  
E = 1,098,505.29  
ELEV. = 668.61



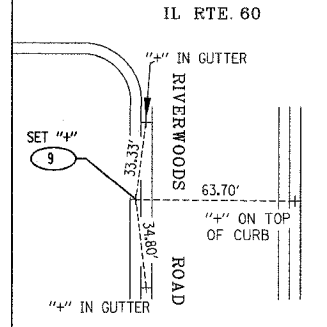
**ASC 7** N = 2,030,398.44  
E = 1,099,176.22  
ELEV. = 675.14



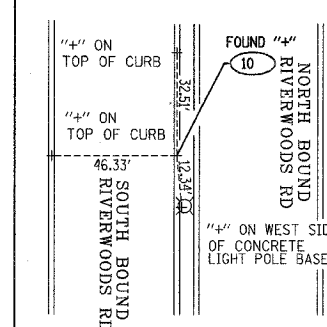
**ASC 8** N = 2,030,410.43  
E = 1,099,935.48  
ELEV. = 681.51



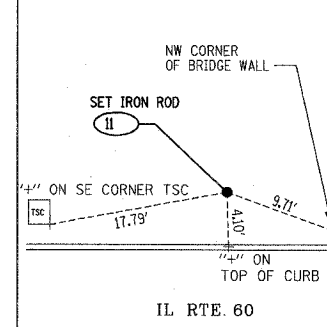
**ASC 9** N = 2,030,236.40  
E = 1,100,049.11  
ELEV. = 683.95



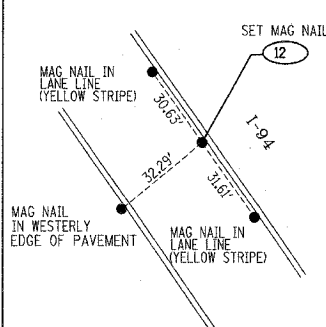
**ASC 10** N = 2,030,965.84  
E = 1,100,088.90  
ELEV. = 693.66



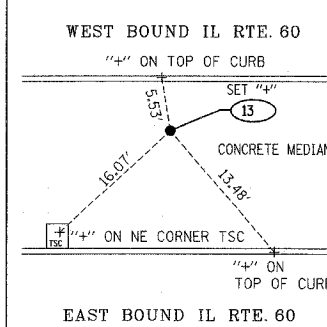
**ASC 11** N = 2,030,496.92  
E = 1,101,116.23  
ELEV. = 710.66



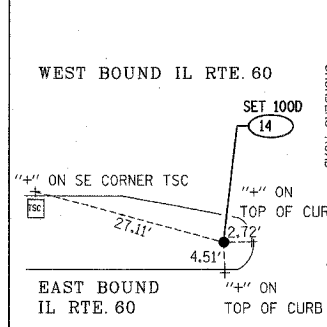
**ASC 12** N = 2,030,118.77  
E = 1,100,910.68  
ELEV. = 700.51



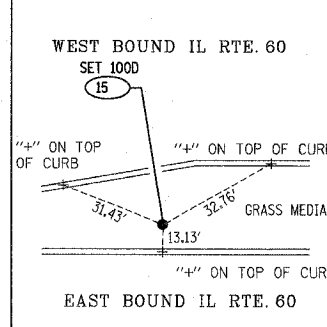
**ASC 13** N = 2,030,458.69  
E = 1,101,764.01  
ELEV. = 706.50



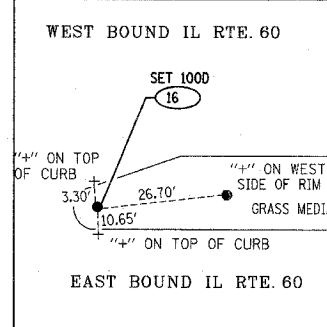
**ASC 14** N = 2,030,466.64  
E = 1,103,108.19  
ELEV. = 688.40



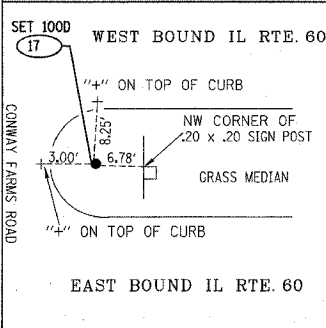
**ASC 15** N = 2,030,463.36  
E = 1,103,108.19  
ELEV. = 686.83



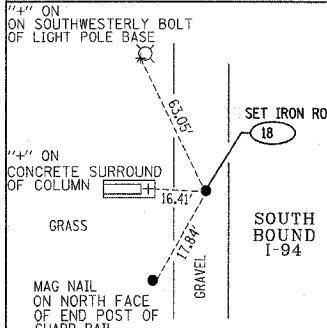
**ASC 16** N = 2,030,458.96  
E = 1,103,706.28  
ELEV. = 681.99



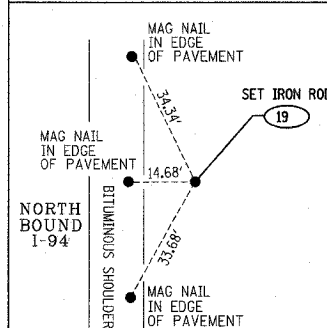
**ASC 17** N = 2,030,454.43  
E = 1,104,300.48  
ELEV. = 677.07



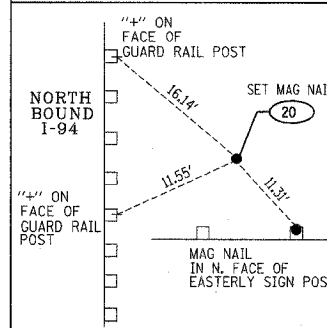
**IDOT 18** N = 2,030,704.56  
E = 1,101,174.89  
ELEV. = 690.43



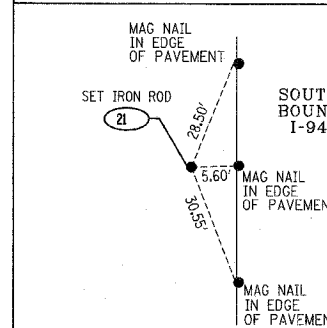
**ASC 19** N = 2,030,598.96  
E = 1,101,325.14  
ELEV. = 689.11



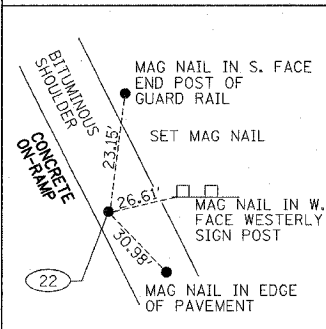
**ASC 20** N = 2,030,320.03  
E = 1,101,324.10  
ELEV. = 689.96



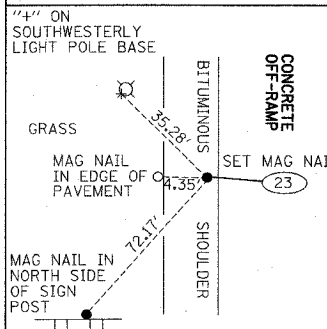
**ASC 21** N = 2,030,236.29  
E = 1,101,179.18  
ELEV. = 688.69



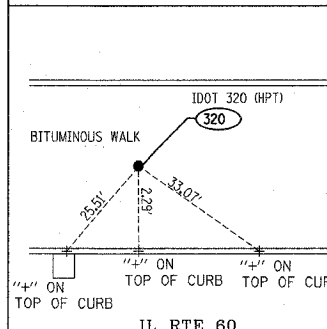
**ASC 22** N = 2,030,787.58  
E = 1,101,641.86  
ELEV. = 700.41



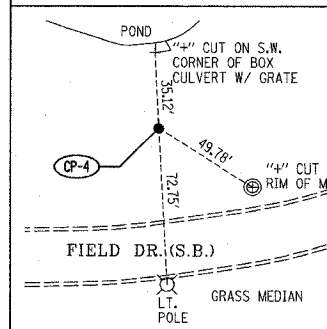
**ASC 23** N = 2,030,812.86  
E = 1,100,870.13  
ELEV. = 699.59



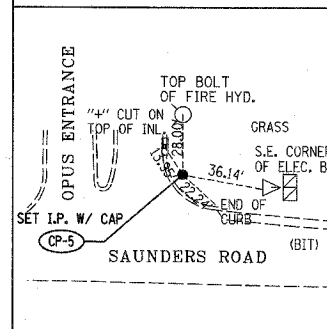
**IDOT 320** N = 2,030,514.51  
E = 1,100,480.89  
ELEV. = 697.83



**CP-4** N = 2,030,894.90  
E = 1,102,635.02  
ELEV. = 684.41



**CP-5** N = 2,030,117.90  
E = 1,102,649.53  
ELEV. = 688.68



TYLIN INTERNATIONAL

| REVISIONS |      |
|-----------|------|
| NAME      | DATE |
|           |      |
|           |      |
|           |      |
|           |      |
|           |      |
|           |      |
|           |      |
|           |      |
|           |      |

ILLINOIS DEPARTMENT OF TRANSPORTATION  
ILLINOIS RTE 60 OVER I-94  
TIE SKETCHES AND DESCRIPTIONS  
FOR CONTROL POINTS

SCALE: 1"=200'-0"  
DATE: MAY 8, 2007  
DRAWN BY: ASC  
CHECKED BY: MPG

6-42-90 AM 5/17/2007