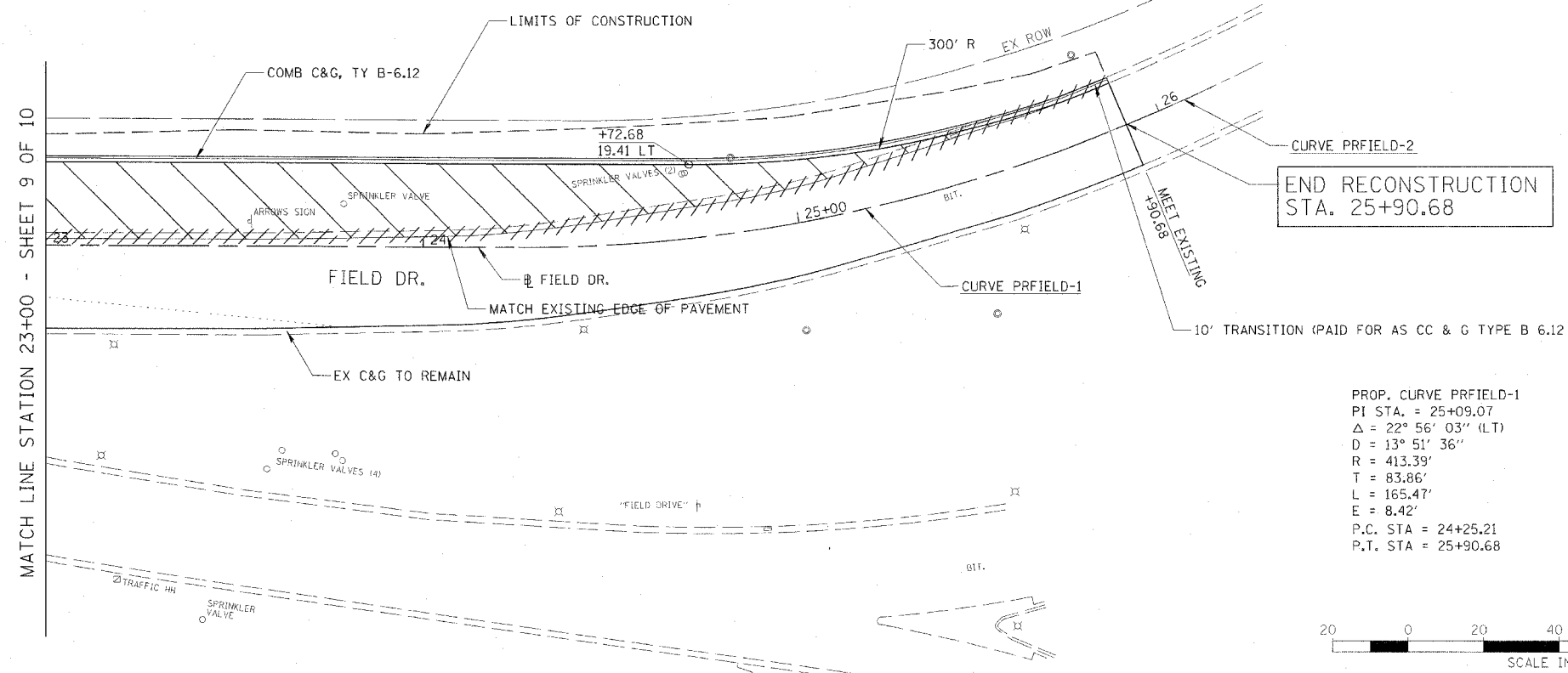
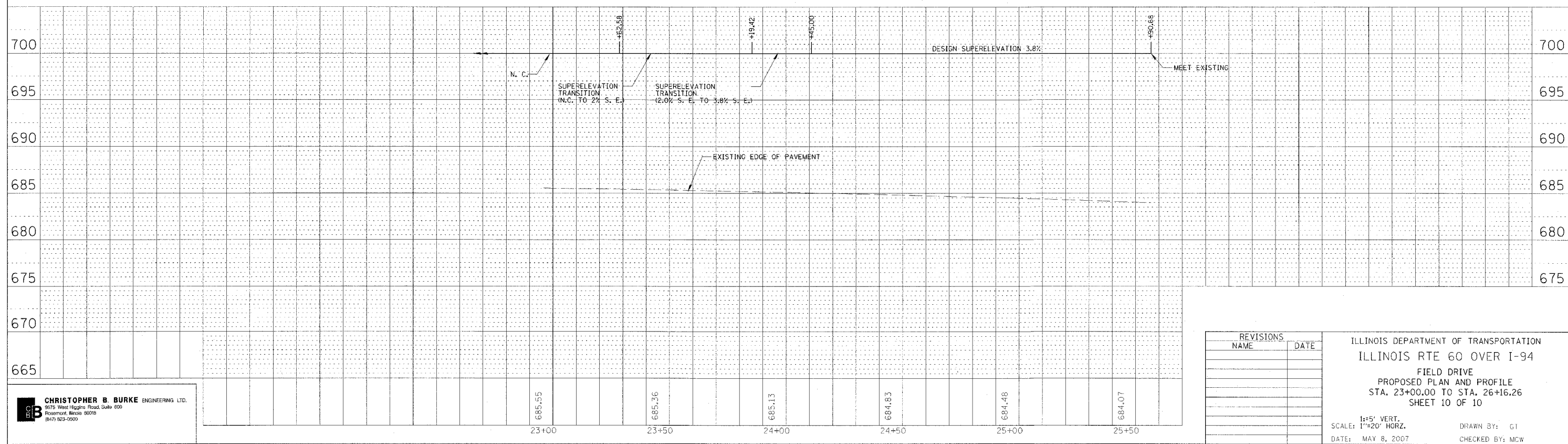


F.A.P. RTE.	SECTION	COUNTY	TOTAL SHEETS	SHEET NO.
335	119R-2	LAKE	439	64
STA. 432+83.12		TO STA. 470+56.84		
FED. ROAD DIST. NO.	ILLINOIS	FED. AID PROJECT		



PROP. CURVE PRFIELD-1 PI STA. = 25+09.07 $\Delta = 22^\circ 56' 03''$ (LT) D = 13° 51' 36" R = 413.39' T = 83.86' L = 165.47' E = 8.42' P.C. STA = 24+25.21 P.T. STA = 25+90.68	PROP. CURVE PRFIELD-2 PI STA. = 26+03.47 $\Delta = 2^\circ 44' 54''$ (LT) D = 10° 44' 49" R = 533.13' T = 12.79' L = 25.57' E = 0.15' P.C. STA = 25+90.68 P.T. STA = 26+16.26
------------------------------------------------------------------------------------------------------------------------------------------------------------------------------------------------------------	----------------------------------------------------------------------------------------------------------------------------------------------------------------------------------------------------------

- LEGEND:
- PROPOSED PCC PAVEMENT, 10 1/4" (JOINTED)
 - PROPOSED HMA PAVEMENT, FULL DEPTH (PAID AS HMA SURFACE & BINDER COURSES - SEE PROPOSED TYPICAL SECTION SHEET 5 OF 5)



REVISIONS	NAME	DATE

ILLINOIS DEPARTMENT OF TRANSPORTATION
ILLINOIS RTE 60 OVER I-94
FIELD DRIVE
PROPOSED PLAN AND PROFILE
STA. 23+00.00 TO STA. 26+16.26
SHEET 10 OF 10

SCALE: 1"=20' HORZ.
1"=5' VERT.
DATE: MAY 8, 2007
DRAWN BY: GT
CHECKED BY: MCW

CB CHRISTOPHER B. BURKE ENGINEERING LTD.
9575 West Higgins Road, Suite 600
Rosemont, Illinois 60018
(847) 923-0500

DATE	
BY	
REVISIONS	
NAME	
DATE	
NO.	

DATE	
BY	
REVISIONS	
NAME	
DATE	
NO.	

6/8/2007 8:25:42 AM