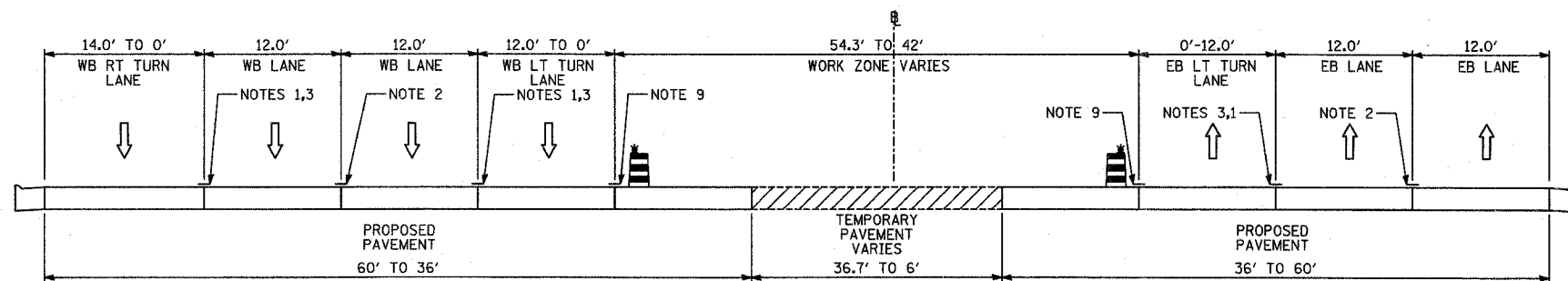


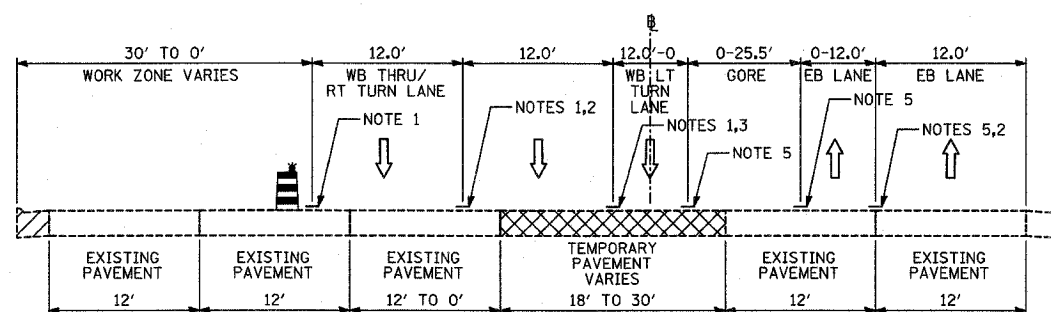
F.A.P. RTE.	SECTION	COUNTY	TOTAL SHEETS	SHEET NO.
335	119R-2	LAKE	439	81
STA. 432+83.12		TO STA. 470+56.84		
FED. ROAD DIST. NO.	ILLINOIS	FED. AID PROJECT		

60B01



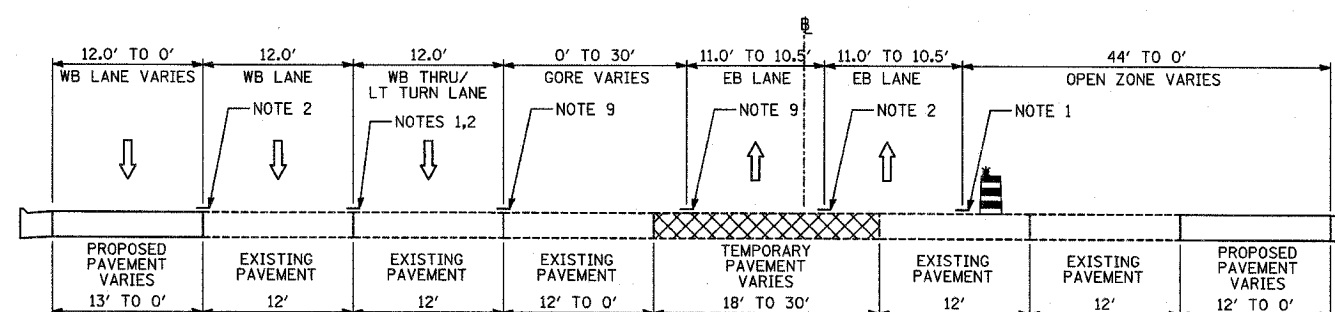
R-R

STAGE 5: IL-60; STA. 451+67 TO STA. 458+93



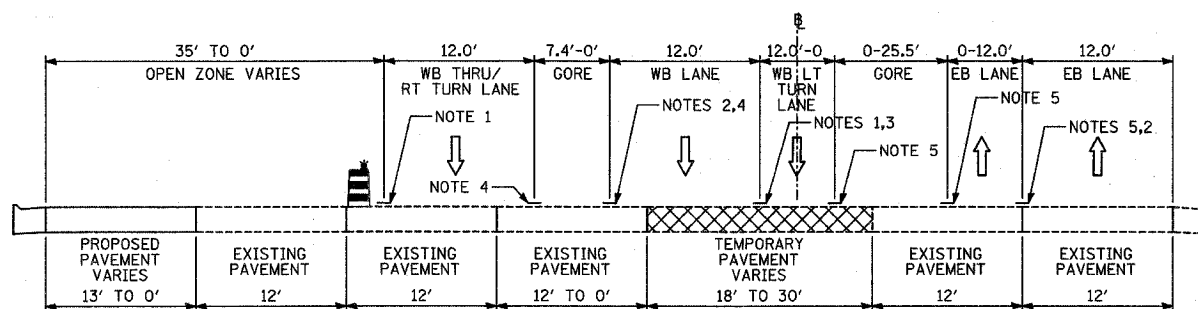
S-S

STAGE 1: IL-60; STA. 460+93 TO STA. 469+50



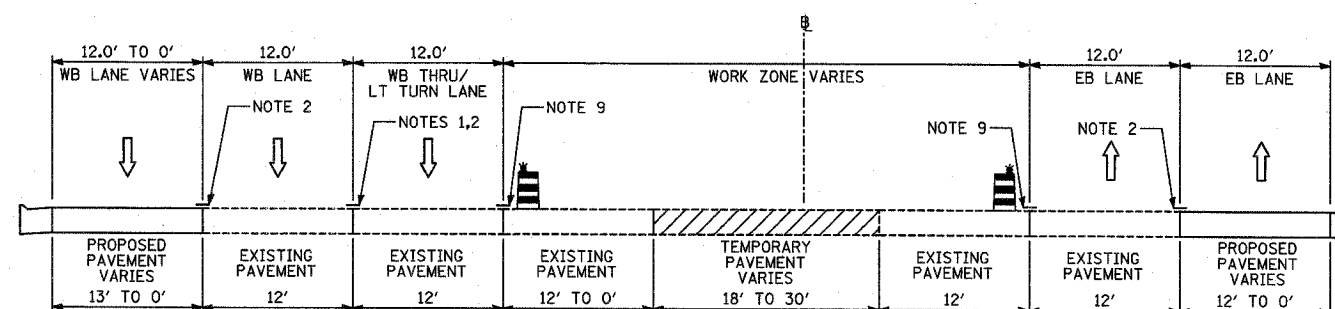
V-V

STAGES 3A & 4: IL-60; STA. 460+93 TO STA. 469+50



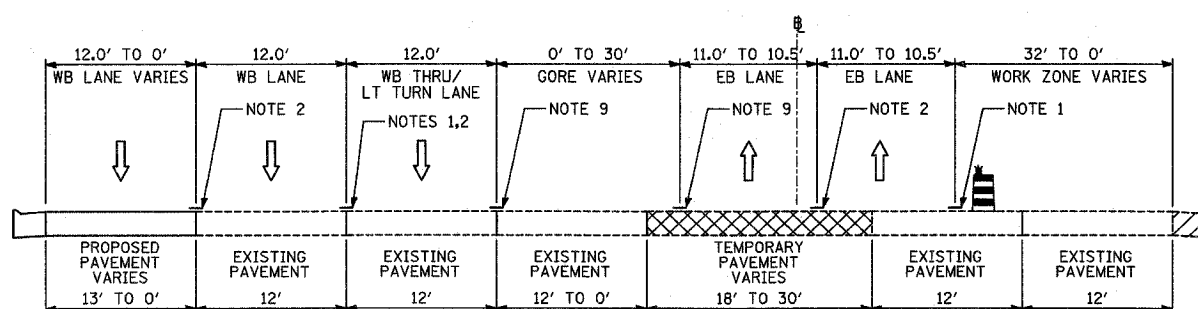
T-T

STAGES 1A & 2: IL-60; STA. 460+93 TO STA. 469+50



W-W

STAGE 5: IL-60; STA. 460+93 TO STA. 469+50



U-U

STAGE 3: IL-60; STA. 460+93 TO STA. 469+50

NOTES:

- 1 - TEMPORARY PAVEMENT MARKING-LINE 4" (SOLID WHITE)
- 2 - TEMPORARY PAVEMENT MARKING-LINE 4" (10'-30' SKIP-DASH WHITE)
- 3 - TEMPORARY PAVEMENT MARKING-LINE 4" (2'-6' SKIP-DASH WHITE)
- 4 - TEMPORARY PAVEMENT MARKING-LINE 8" (SOLID WHITE)
- 5 - TEMPORARY PAVEMENT MARKING-LINE 4" (SOLID DOUBLE YELLOW)
- 6 - EXISTING PAVEMENT MARKING, (SOLID WHITE)
- 7 - EXISTING PAVEMENT MARKING, (SKIP-DASH WHITE)
- 8 - EXISTING PAVEMENT MARKING, (SOLID DOUBLE YELLOW)
- 9 - TEMPORARY PAVEMENT MARKING-LINE 4" (SOLID YELLOW)
- 10 - EXISTING PAVEMENT MARKING, (SOLID YELLOW)

LEGEND:

- TEMPORARY CONCRETE BARRIER (WITH REFLECTORS ON TOP AND SIDE FACING TRAFFIC)
- TRAFFIC MOVEMENT
- DRUM WITH MONO-DIRECTIONAL STEADY BURNING LIGHT
- EXISTING BRIDGE PARAPET (WITH REFLECTORS ON TOP AND SIDE FACING TRAFFIC)
- PAVEMENT REMOVAL AREA
- TEMPORARY PAVEMENT

REVISIONS	
NAME	DATE

ILLINOIS DEPARTMENT OF TRANSPORTATION
ILLINOIS RTE 60 OVER I-94
MAINTENANCE OF TRAFFIC
TYPICAL SECTIONS AND DETAILS
SHEET 4 OF 7

SCALE: NO SCALE DRAWN BY: RTM
DATE: MAY 8, 2007 CHECKED BY: MPG

TYLIN INTERNATIONAL

05/02/2007 10:42:27 AM