

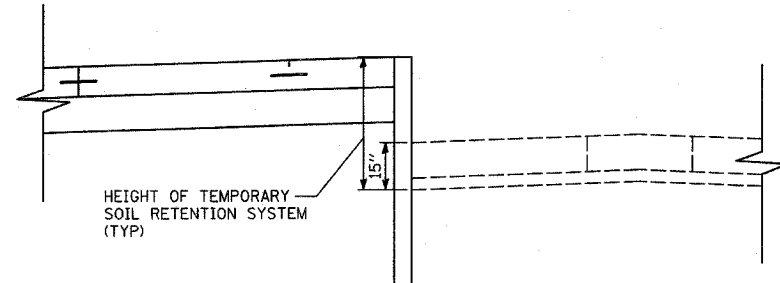
F.A.P. RTE.	SECTION	COUNTY	TOTAL SHEETS	SHEET NO.
335	119R-2	LAKE	439	85
STA. 432+83.12		TO STA. 470+56.84		
FED. ROAD DIST. NO.	ILLINOIS	FED. AID PROJECT		

60B01

STAGE 1: TEMPORARY SOIL RETENTION (ILLINOIS ROUTE 60)

STATION	PROPOSED ELEVATION (FOOT)	EXISTING ELEVATION (FOOT)	RETENTION HEIGHT (FOOT)	SOIL RETENTION (SQ FT)
442+00	N/A	N/A	0.00	0.0
442+25	709.18	708.65	1.78	22.2
442+50	709.69	708.98	1.96	46.8
442+75	710.20	709.31	2.14	51.3
443+00	710.71	709.61	2.35	56.1
443+25	711.22	709.82	2.65	62.5
443+50	711.70	710.04	2.91	69.5
443+75	712.13	710.24	3.14	75.6
444+00	712.51	710.42	3.34	81.0
444+07	712.60	710.47	3.38	23.5
	BRIDGE	OMISSION		
447+02	712.79	710.77	3.27	3.3
447+25	712.48	710.61	3.12	73.5
447+50	712.10	710.44	2.91	75.4
447+75	711.67	710.28	2.64	69.4
448+00	711.21	710.11	2.35	62.4
448+25	710.75	709.85	2.15	56.3
448+50	710.29	709.57	1.97	51.5
448+75	709.83	709.30	1.78	46.9
449+00	N/A	N/A	0.00	22.3
TOTAL				949.3

FULL DEPTH OF THE EXISTING PAVEMENT IS REQUIRED TO BE RETAINED. THE ADDITIONAL DEPTH OF 15" IS INCLUDED IN THE RETENTION HEIGHT.

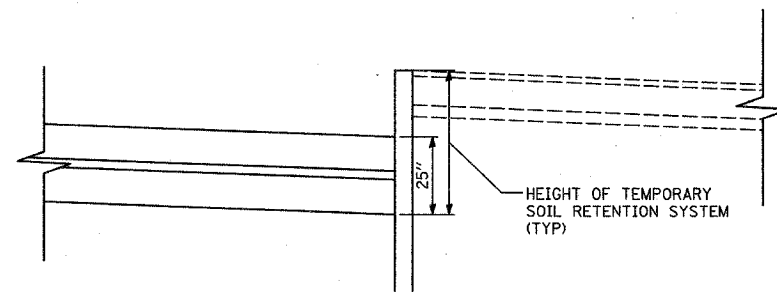


STAGE 1: SOIL RETENTION SYSTEM (ILLINOIS ROUTE 60)  
(LOOKING EAST)

STAGE 3: TEMPORARY SOIL RETENTION (SB I-94 ENTRANCE RAMP)

STATION	PROPOSED ELEVATION (FOOT)	EXISTING ELEVATION (FOOT)	RETENTION HEIGHT (FOOT)	SOIL RETENTION (SQ FT)
119+00	N/A	N/A	0.00	0.0
119+25	704.41	705.06	2.82	35.2
119+50	704.03	704.99	3.13	74.3
119+75	703.64	704.65	3.18	78.8
120+00	703.26	704.38	3.29	80.8
120+25	702.88	704.08	3.37	83.2
120+50	702.49	703.69	3.37	84.2
120+75	702.11	703.26	3.32	83.5
121+00	701.73	702.83	3.27	82.3
121+25	701.34	702.40	3.23	81.2
121+50	700.96	701.95	3.16	79.8
121+75	700.58	701.46	3.05	77.5
122+00	700.19	700.96	2.94	74.8
122+25	699.81	700.46	2.82	71.9
122+50	699.43	699.97	2.71	69.0
122+75	N/A	N/A	0.00	33.8
TOTAL				1090.3

FULL DEPTH OF THE PROPOSED PAVEMENT IS REQUIRED TO BE RETAINED. THE ADDITIONAL DEPTH OF 26" IS INCLUDED IN THE RETENTION HEIGHT.



STAGE 3: SOIL RETENTION SYSTEM  
(SB I-94 ENTRANCE RAMP AND NB I-94 EXIT RAMP)  
(LOOKING IN DIRECTION OF TRAFFIC)

STAGE 3: TEMPORARY SOIL RETENTION (NB I-94 EXIT RAMP)

STATION	PROPOSED ELEVATION (FOOT)	EXISTING ELEVATION (FOOT)	RETENTION HEIGHT (FOOT)	SOIL RETENTION (SQ FT)
196+00	N/A	N/A	0.00	0.0
196+25	700.08	700.55	2.64	33.0
196+50	700.55	701.10	2.72	66.9
196+75	701.02	701.65	2.80	68.9
197+00	701.49	702.20	2.88	70.9
197+25	701.96	702.73	2.94	72.7
197+50	702.43	703.25	2.99	74.0
197+75	702.90	703.78	3.05	75.4
198+00	703.37	704.33	3.13	77.2
198+25	703.84	704.76	3.09	77.7
198+50	704.31	705.15	3.01	76.2
198+75	704.78	705.50	2.89	73.7
199+00	705.25	705.82	2.74	70.3
199+25	N/A	N/A	0.00	34.2
TOTAL				871.0

FULL DEPTH OF THE PROPOSED PAVEMENT IS REQUIRED TO BE RETAINED. THE ADDITIONAL DEPTH OF 26" IS INCLUDED IN THE RETENTION HEIGHT.

TYLIN INTERNATIONAL

REVISIONS	
NAME	DATE

ILLINOIS DEPARTMENT OF TRANSPORTATION  
ILLINOIS RTE 60 OVER I-94

MAINTENANCE OF TRAFFIC  
TEMPORARY SOIL RETENTION SYSTEM  
SECTIONS AND SCHEDULES

SCALE: NONE  
DATE: MAY 8, 2007  
DRAWN BY: MPC  
CHECKED BY: JDF

05/02/2007 10:24:37 AM