

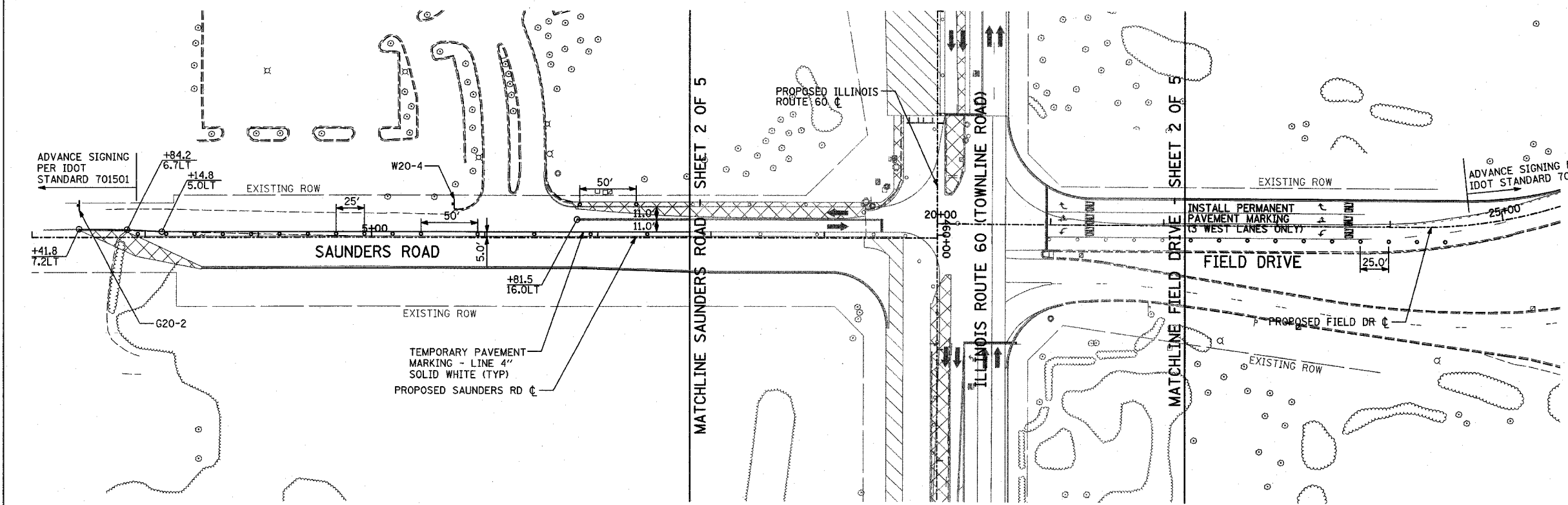
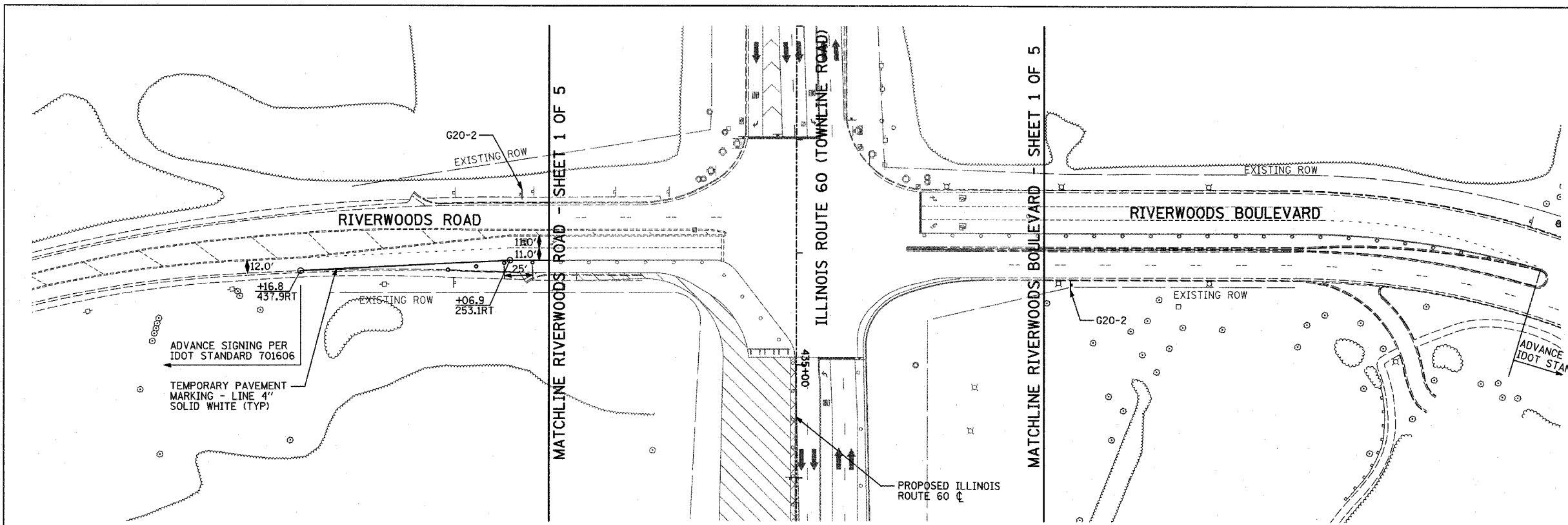
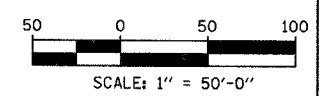
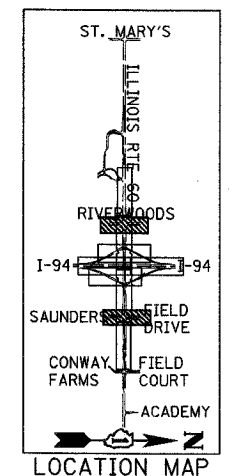
F.A.P. RTE.	SECTION	COUNTY	TOTAL SHEETS	SHEET NO.
335	119R-2	LAKE	439	112
STA. 432+83.12		TO STA. 470+56.84		
FED. ROAD DIST. NO.	ILLINOIS FED. AID PROJECT			

60B01



LEGEND:

- CONSTRUCTION ZONE
- TEMPORARY PAVEMENT
- TRAFFIC MOVEMENT
- TEMPORARY SIGN (SEE M.O.T. SIGNING LEGEND)
- TYPE II BARRICADES OR DRUMS W/ MONO-DIRECTIONAL STEADY BURNING LIGHT
- TYPE III BARRICADE W/2 FLASHING BIDIRECTIONAL LIGHTS
- TEMPORARY CONCRETE BARRIER
- ARROW BOARD
- M.O.T. APPURTENANCES REMAINING FROM PREVIOUS STAGES



TYLIN INTERNATIONAL

REVISIONS	
NAME	DATE

ILLINOIS DEPARTMENT OF TRANSPORTATION
**ILLINOIS RTE 60 OVER I-94
 MAINTENANCE OF TRAFFIC PLAN
 IL RTE 60 @ RIVERWOODS RD/BLVD
 & SAUNDERS RD/FIELD DR
 STAGE 3 - SHEET 3 OF 5**

SCALE: 1"=50'-0"
 DATE: MAY 8, 2007
 DRAWN BY: MPG, CBS
 CHECKED BY: JDF

P:\60245817-601\road\60mof_3_sht3.dgn 05/02/2007 09:32 AM