

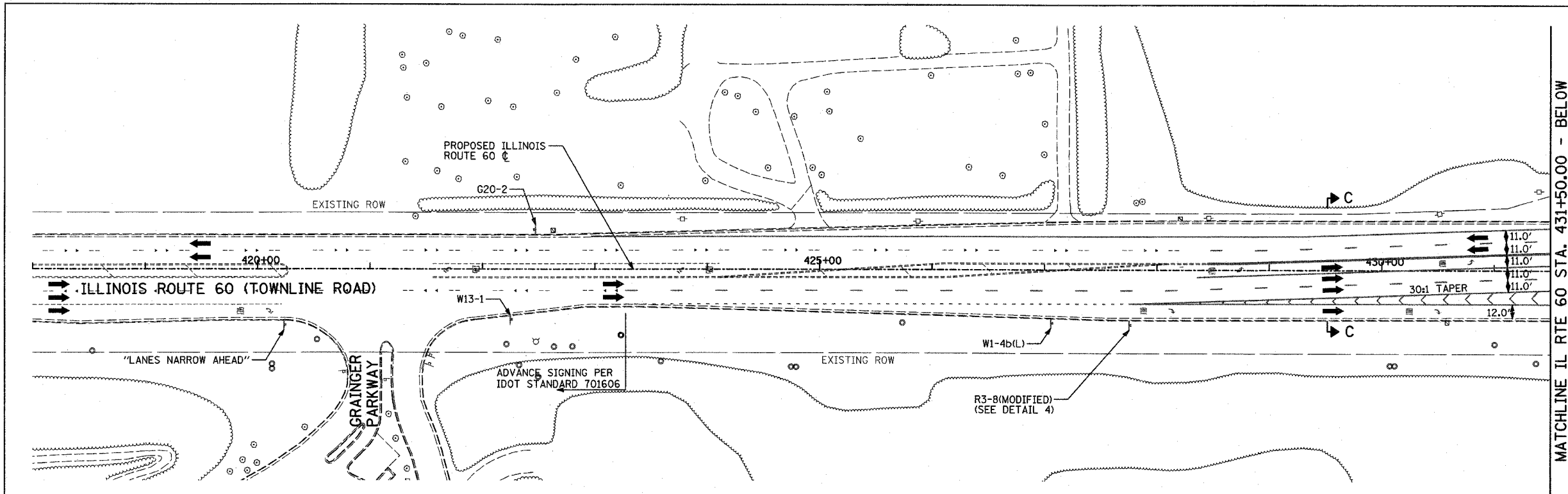
F.A.P. RTE.	SECTION	COUNTY	TOTAL SHEETS	SHEET NO.
335	119R-2	LAKE	439	120
STA. 432+83.12		TO STA. 470+56.84		
FED. ROAD DIST. NO.	ILLINOIS	FED. AID PROJECT		

60B01



LEGEND:

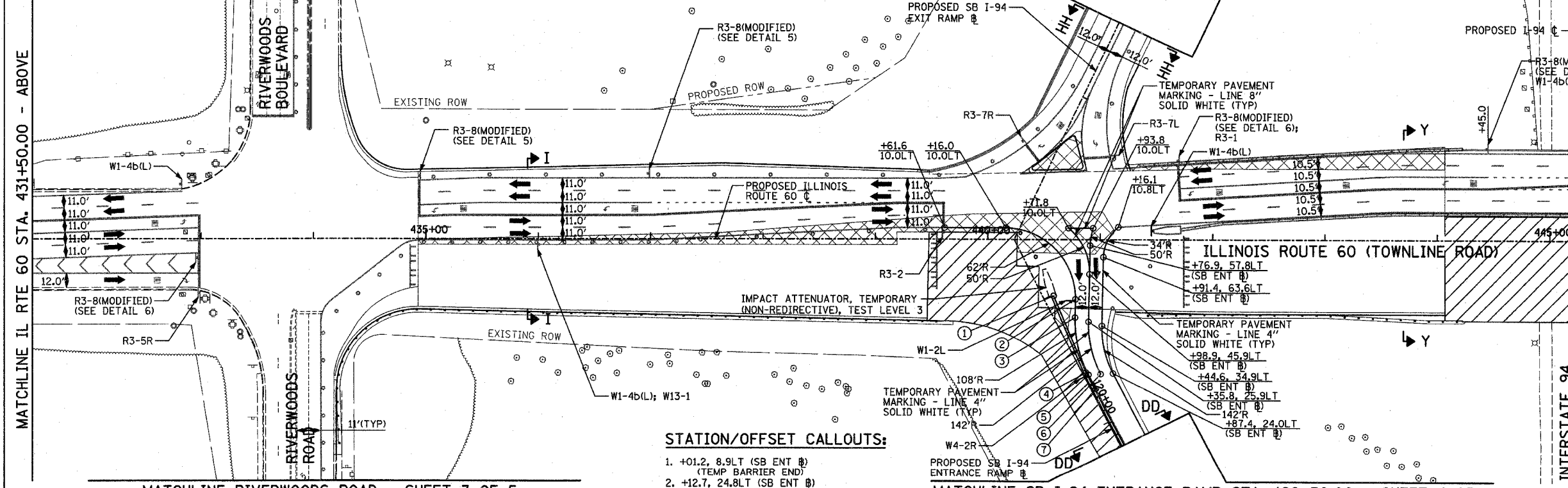
- CONSTRUCTION ZONE
- TEMPORARY PAVEMENT
- TRAFFIC MOVEMENT
- TEMPORARY SIGN (SEE M.O.T. SIGNING LEGEND)
- TYPE II BARRICADES OR DRUMS W/ MONO-DIRECTIONAL STEADY BURNING LIGHT
- TYPE III BARRICADE W/2 FLASHING BIDIRECTIONAL LIGHTS
- TEMPORARY CONCRETE BARRIER
- ARROW BOARD



MATCHLINE IL RTE 60 STA. 431+50.00 - BELOW

MATCHLINE RIVERWOODS BOULEVARD - SHEET 3 OF 5

MATCHLINE SB I-94 EXIT RAMP STA. 116+25.00 - SHEET 4 OF 5



MATCHLINE IL RTE 60 STA. 431+50.00 - ABOVE

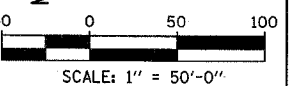
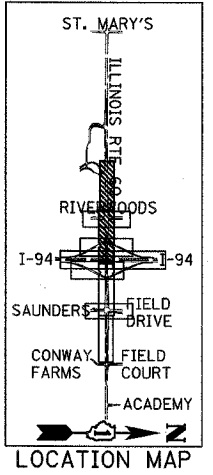
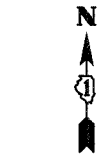
MATCHLINE IL RTE 60 STA. 446+50.00 - SHEET 2 OF 5

MATCHLINE RIVERWOODS ROAD - SHEET 3 OF 5

MATCHLINE SB I-94 ENTRANCE RAMP STA. 120+50.00 - SHEET 4 OF 5

STATION/OFFSET CALLOUTS:

1. +01.2, 8.9LT (SB ENT @) (TEMP BARRIER END)
2. +12.7, 24.8LT (SB ENT @)
3. +27.1, 17.0LT (SB ENT @)
4. +76.0, 3.0LT (SB ENT @) (TEMP BARRIER FACE)
5. +78.5, 4.0LT (SB ENT @)
6. +83.0, 14.0LT (SB ENT @)
7. +92.8, 4.0LT (SB ENT @)



REVISIONS	
NAME	DATE

ILLINOIS DEPARTMENT OF TRANSPORTATION
ILLINOIS RTE 60 OVER I-94
 MAINTENANCE OF TRAFFIC PLAN
 IL RTE 60 STA. 418+00.00 TO 446+50.00
 STAGE 4 - SHEET 1 OF 5
 SCALE: 1"=50'-0"
 DATE: MAY 8, 2007

DRAWN BY: MPG, CBS
 CHECKED BY: JDF

TYLIN INTERNATIONAL

05/10/2007 10:31:08 AM