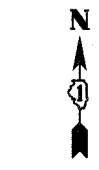





F.A.P. RTE.	SECTION	COUNTY	TOTAL SHEETS	SHEET NO.
335	119R-2	LAKE	439	131
STA. 432+83.12		TO STA. 470+56.84		
FED. ROAD DIST. NO.		ILLINOIS FED. AID PROJECT		

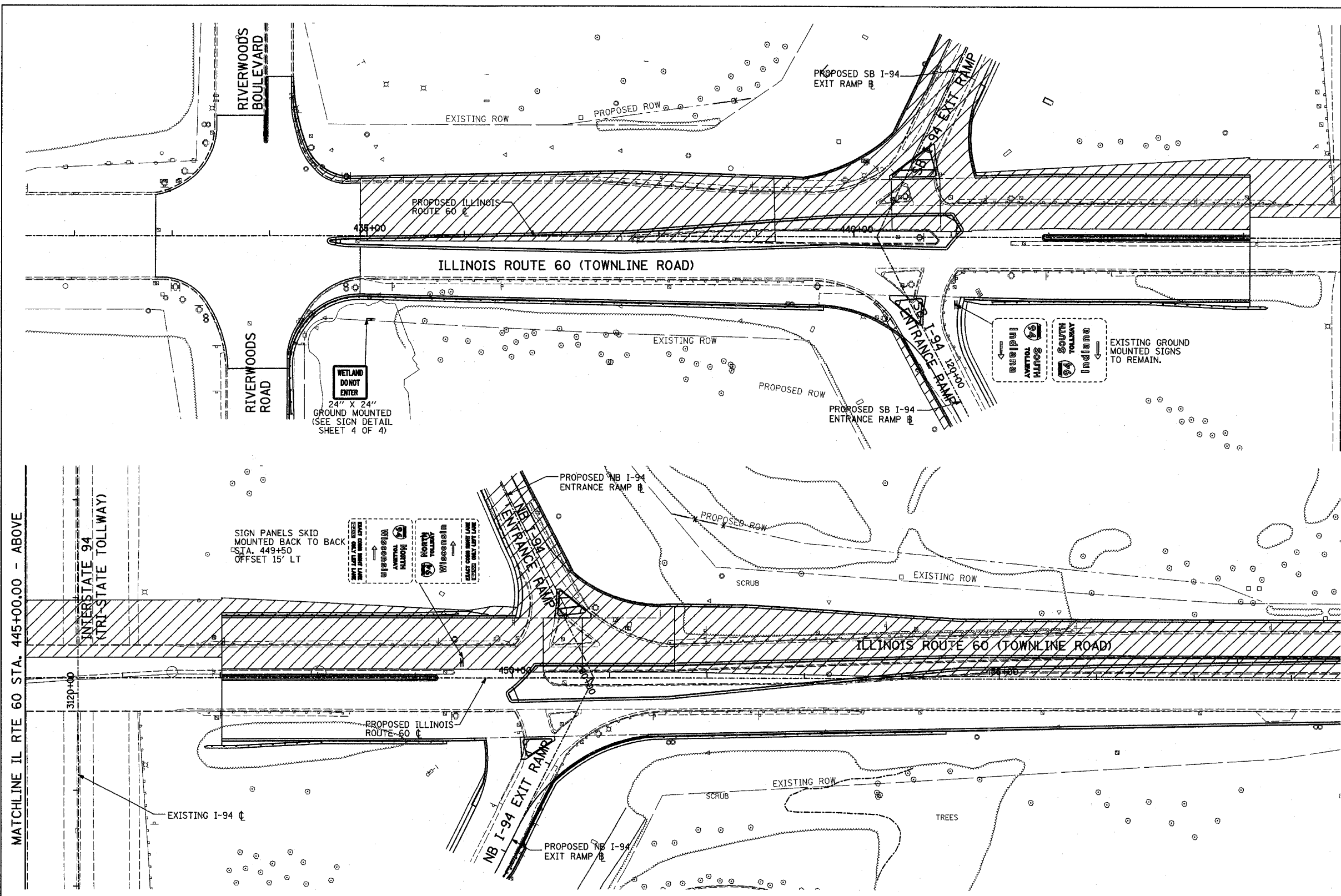
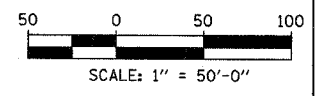
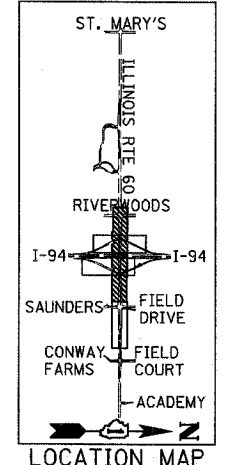
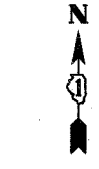
60B01



TEMPORARY SIGNING LEGEND:

-  PROPOSED TEMPORARY SIGN PANEL LOCATION
-  EXISTING LARGE SIGN PANEL
-  PROPOSED SIGN PANEL

NOTE:
ALL OTHER SIGNS THAT ARE OBTSCURED BY, OR INTERFERED WITH BY, THE CONSTRUCTION OPERATIONS SHALL BE REMOVED AND RE-ERECTED WHEN DIRECTED BY THE ENGINEER, IN ACCORDANCE WITH ARTICLE 107.25.



MATCHLINE IL RTE 60 STA. 445+00.00 - ABOVE

MATCHLINE IL RTE 60 STA. 445+00.00 - BELOW

TYLININTERNATIONAL

REVISIONS	
NAME	DATE

ILLINOIS DEPARTMENT OF TRANSPORTATION
ILLINOIS RTE 60 OVER I-94
CONSTRUCTION SIGNING PLAN
IL RTE 60 STA. 432+83.12 TO 458+50.00
STAGES 1, 1A, & 2 - SHEET 1 OF 2
SCALE: 1"=50'-0"
DATE: MAY 8, 2007
DRAWN BY: CBS
CHECKED BY: MPC

5/17/2007 8:06:38 AM