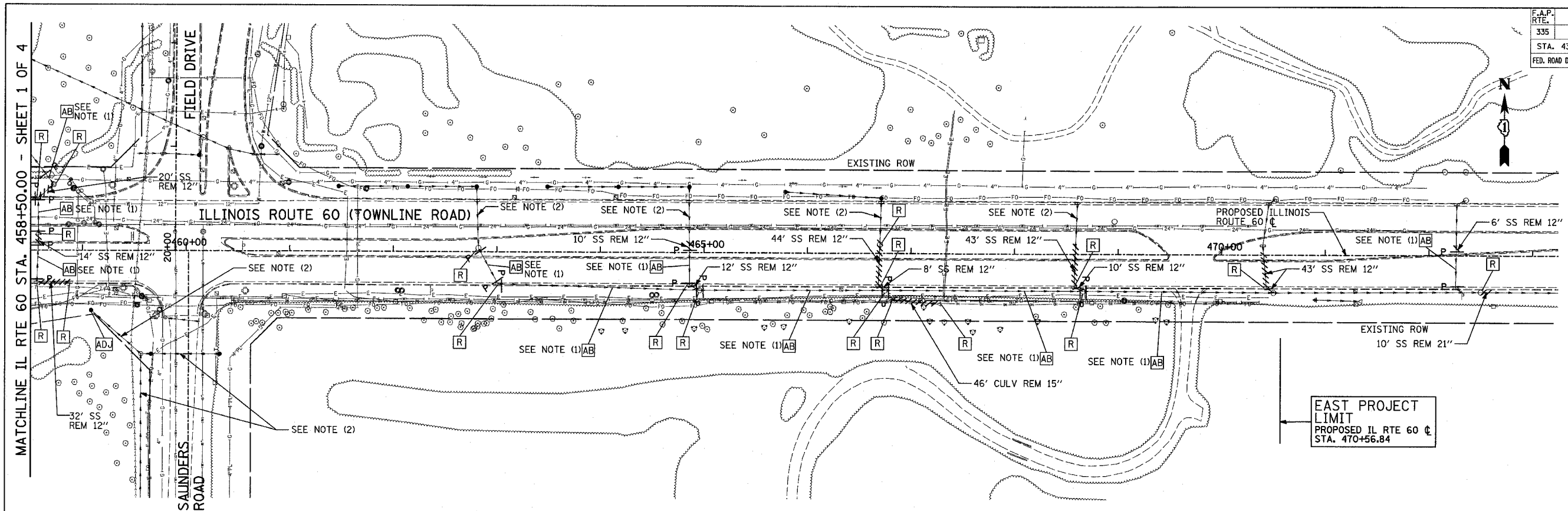


F.A.P. RTE.	SECTION	COUNTY	TOTAL SHEETS	SHEET NO.
335	119R-2	LAKE	439	139
STA. 432+83.12		TO STA. 470+56.84		
FED. ROAD DIST. NO.		ILLINOIS FED. AID PROJECT		

60B01



MATCHLINE IL RTE 60 STA. 458+50.00 - SHEET 1 OF 4

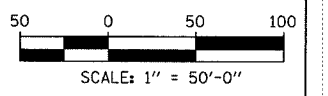
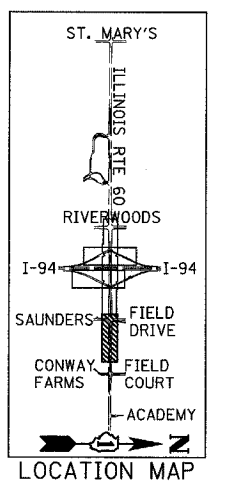
EAST PROJECT LIMIT
 PROPOSED IL RTE 60 CL
 STA. 470+56.84

LEGEND:

- P SEWER PLUG
- F.V. FIELD VERIFY
- //// STORM SEWER REMOVAL
- END SECTION

NOTES:

1. ABANDONED SEWER TO BE FILLED WITH CONTROLLED LOW STRENGTH MATERIAL. SEE SCHEDULE FOR DETAILS.
2. SEE DRAINAGE AND UTILITY PLANS, SHEET 6-SHEET 10, FOR INFORMATION.



REVISIONS	
NAME	DATE

ILLINOIS DEPARTMENT OF TRANSPORTATION
 ILLINOIS RTE 60 OVER I-94
 EXISTING UTILITIES AND
 DRAINAGE REMOVAL PLAN
 IL RTE 60 STA. 458+50.00 TO 470+56.84
 SHEET 2 OF 4

SCALE: 1"=50'-0"
 DATE: MAY 8, 2007
 DRAWN BY: NSB
 CHECKED BY: DA

TYLIN INTERNATIONAL

05/08/2007 07:32:19 AM