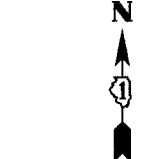


F.A.P. RTE.	SECTION	COUNTY	TOTAL SHEETS	SHEET NO.
335	119R-2	LAKE	439	142
STA. 432+83.12		TO STA. 470+56.84		
FED. ROAD DIST. NO.	ILLINOIS	FED. AID PROJECT		60B01

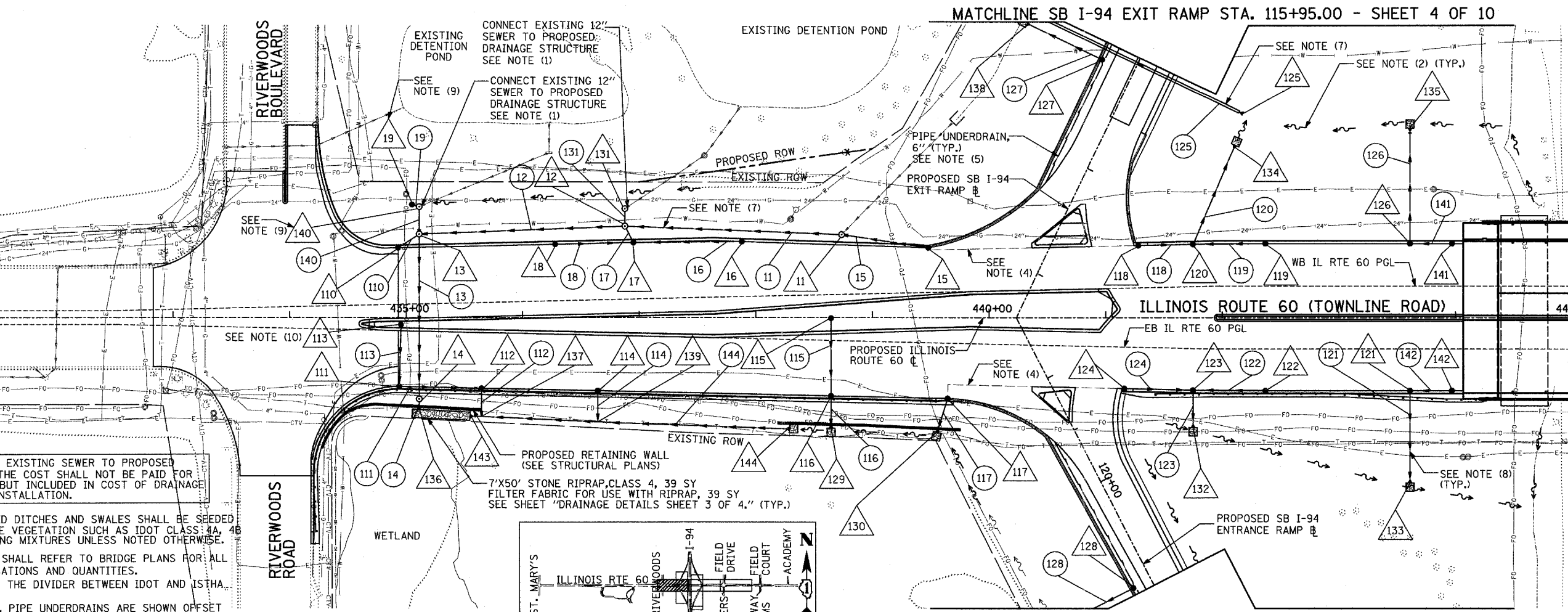
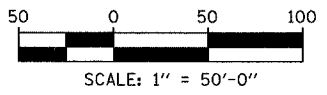


LEGEND:

- (XY) PROPOSED STORM SEWER NUMBER (X=SHEET NO., Y=PIPE NO.)
- △XY PROPOSED STRUCTURE NUMBER (X=SHEET NO., Y=STRUCTURE NO.)
- SHEET FLOW

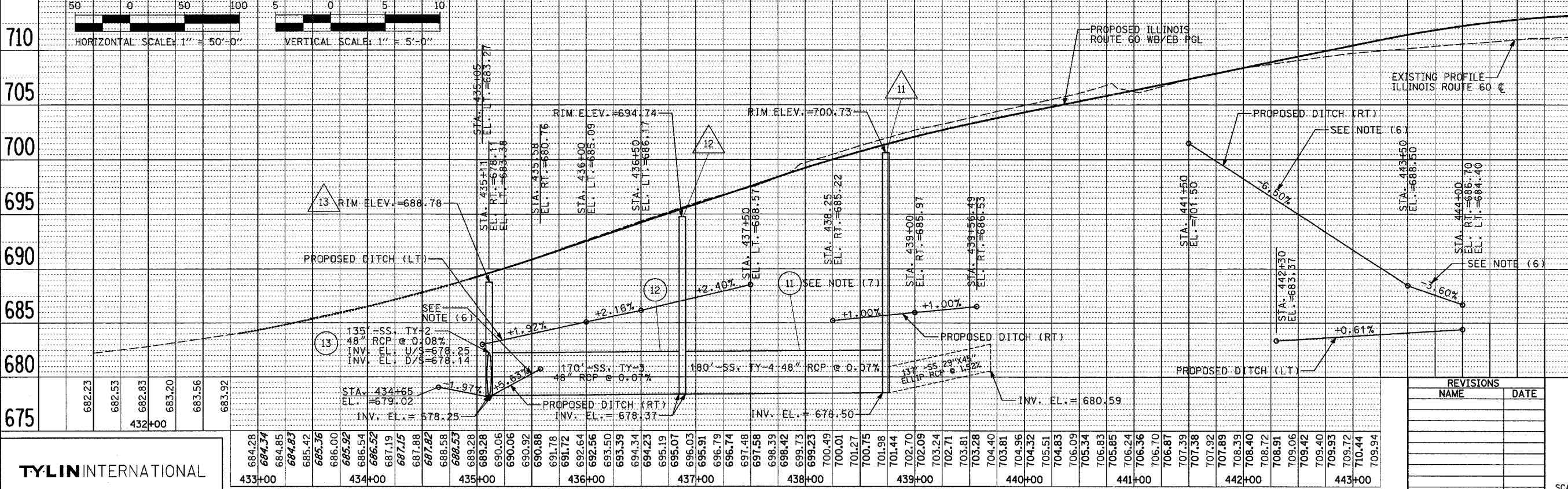
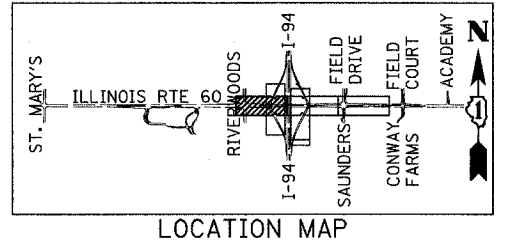
NOTES CONTINUED:

6. ALL PROPOSED DITCHES/SWALES WITH GRADES GREATER THAN 3% SHALL BE SODDED TO REDUCE EROSION, UNLESS NOTED OTHERWISE.
7. FOR TRENCH DEPTHS GREATER THAN 20', THE CONTRACTOR SHALL PROVIDE FOR TEMPORARY SHEET PILING OR BRACED EXCAVATION AS REQUIRED FOR PROTECTION DURING CONSTRUCTION OF STORM SEWER. THE DESIGN SHALL BE SIGNED AND SEALED BY A STRUCTURAL ENGINEER.
8. ALL SLOPED PIPE DRAINS SHALL BE AS PER DETAIL SHOWN ON SHEET 4 OF 4 OF DRAINAGE DETAILS. THE COST OF CONCRETE THRUST BLOCKS AND PIPE BENDS SHALL BE INCLUDED IN SEWER INSTALLATION COST.
9. STRUCTURES 19 AND 140 SHALL HAVE A BOLTED DOWN GRATE.
10. GRADE PROPOSED MEDIAN TO DRAIN TO PROPOSED CATCH BASIN.



NOTES:

1. CONNECT THE EXISTING SEWER TO PROPOSED STRUCTURE. THE COST SHALL NOT BE PAID FOR SEPARATELY BUT INCLUDED IN COST OF DRAINAGE STRUCTURE INSTALLATION.
2. ALL PROPOSED DITCHES AND SWALES SHALL BE SEEDED USING NATIVE VEGETATION SUCH AS IDOT CLASS 4A, 4B OR 5A SEEDING MIXTURES UNLESS NOTED OTHERWISE.
3. CONTRACTOR SHALL REFER TO BRIDGE PLANS FOR ALL SCUPPER LOCATIONS AND QUANTITIES.
4. THIS LINE IS THE DIVIDER BETWEEN IDOT AND ISTHA PAY ITEMS.
5. FOR CLARITY, PIPE UNDERDRAINS ARE SHOWN OFFSET FROM THEIR PROPOSED LOCATIONS. SEE PROPOSED TYPICAL SECTIONS FOR PROPOSED PUD LOCATIONS. FOR DETAILED PLACEMENT, SEE ILLINOIS TOLLWAY STANDARD B12-00, PIPE UNDERDRAINS (FILTER FABRIC) AND SLOTTED PAVEMENT DRAIN.



710	710.95	710.16	710.37	710.86	710.57	710.75	710.56	710.96	712.82	711.11	713.04	713.20
705												
700												
695												
690												
685												
680												
675												

REVISIONS	
NAME	DATE

ILLINOIS DEPARTMENT OF TRANSPORTATION
ILLINOIS RTE 60 OVER I-94
DRAINAGE AND UTILITY
PROPOSED PLAN AND PROFILE
IL RTE 60 STA. 432+83.12 TO 445+00
SHEET 1 OF 10

SCALE: 1"=50'-0"
DATE: MAY 8, 2007
DRAWN BY: NSB
CHECKED BY: DA

TYLIN INTERNATIONAL