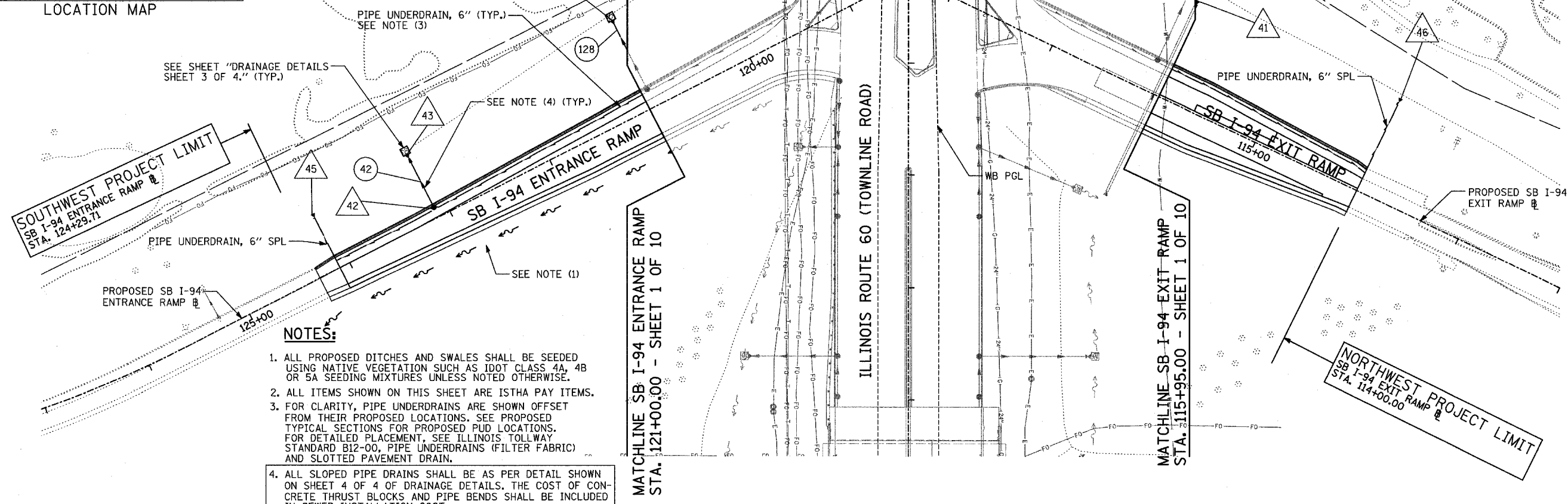
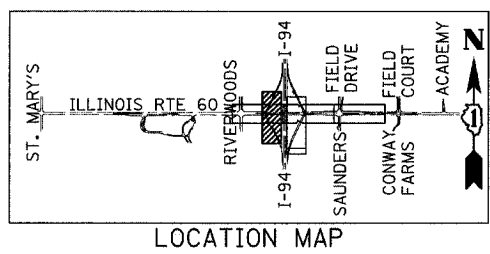
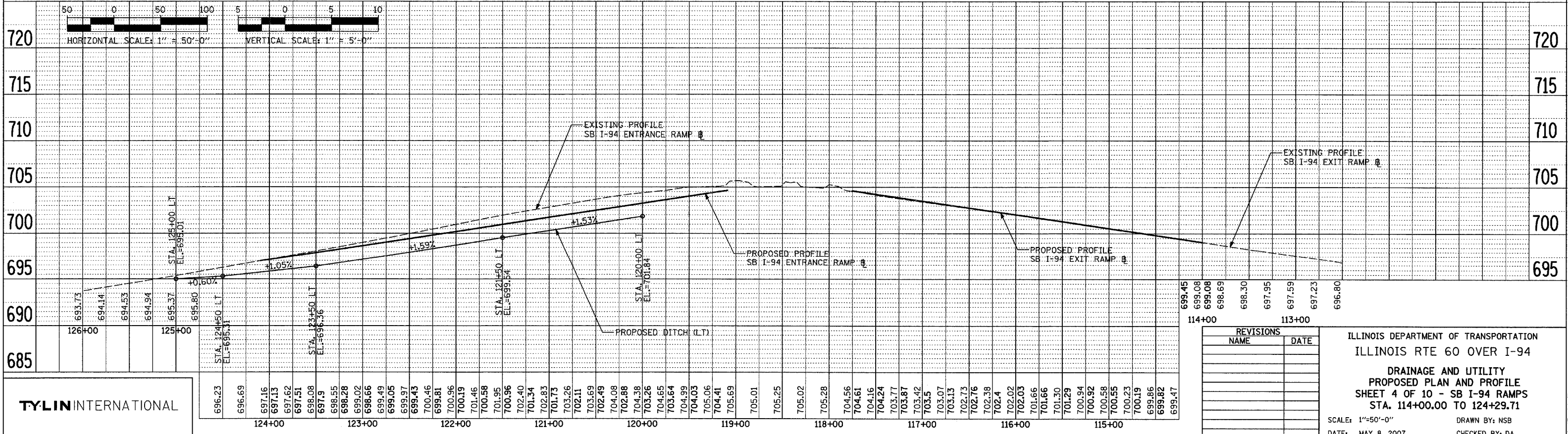
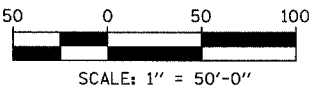


F.A.P. RTE.	SECTION	COUNTY	TOTAL SHEETS	SHEET NO.
335	119R-2	LAKE	439	145
STA. 432+83.12		TO STA. 470+56.84		
FED. ROAD DIST. NO.	ILLINOIS FED. AID PROJECT		60B01	



- NOTES:**
1. ALL PROPOSED DITCHES AND SWALES SHALL BE SEEDDED USING NATIVE VEGETATION SUCH AS IDOT CLASS 4A, 4B OR 5A SEEDING MIXTURES UNLESS NOTED OTHERWISE.
 2. ALL ITEMS SHOWN ON THIS SHEET ARE ISTHA PAY ITEMS.
 3. FOR CLARITY, PIPE UNDERDRAINS ARE SHOWN OFFSET FROM THEIR PROPOSED LOCATIONS. SEE PROPOSED TYPICAL SECTIONS FOR PROPOSED PUD LOCATIONS. FOR DETAILED PLACEMENT, SEE ILLINOIS TOLLWAY STANDARD B12-00, PIPE UNDERDRAINS (FILTER FABRIC) AND SLOTTED PAVEMENT DRAIN.
 4. ALL SLOPED PIPE DRAINS SHALL BE AS PER DETAIL SHOWN ON SHEET 4 OF 4 OF DRAINAGE DETAILS. THE COST OF CONCRETE THRUST BLOCKS AND PIPE BENDS SHALL BE INCLUDED IN SEWER INSTALLATION COST.

- LEGEND:**
- (XY) PROPOSED STORM SEWER NUMBER (X=SHEET NO., Y=PIPE NO.)
 - (XY) PROPOSED STRUCTURE NUMBER (X=SHEET NO., Y=STRUCTURE NO.)
 - ➔ SHEET FLOW



REVISIONS	
NAME	DATE

ILLINOIS DEPARTMENT OF TRANSPORTATION
 ILLINOIS RTE 60 OVER I-94
 DRAINAGE AND UTILITY
 PROPOSED PLAN AND PROFILE
 SHEET 4 OF 10 - SB I-94 RAMPS
 STA. 114+00.00 TO 124+29.71
 SCALE: 1"=50'-0"
 DATE: MAY 8, 2007
 DRAWN BY: NSB
 CHECKED BY: DA

TYLIN INTERNATIONAL