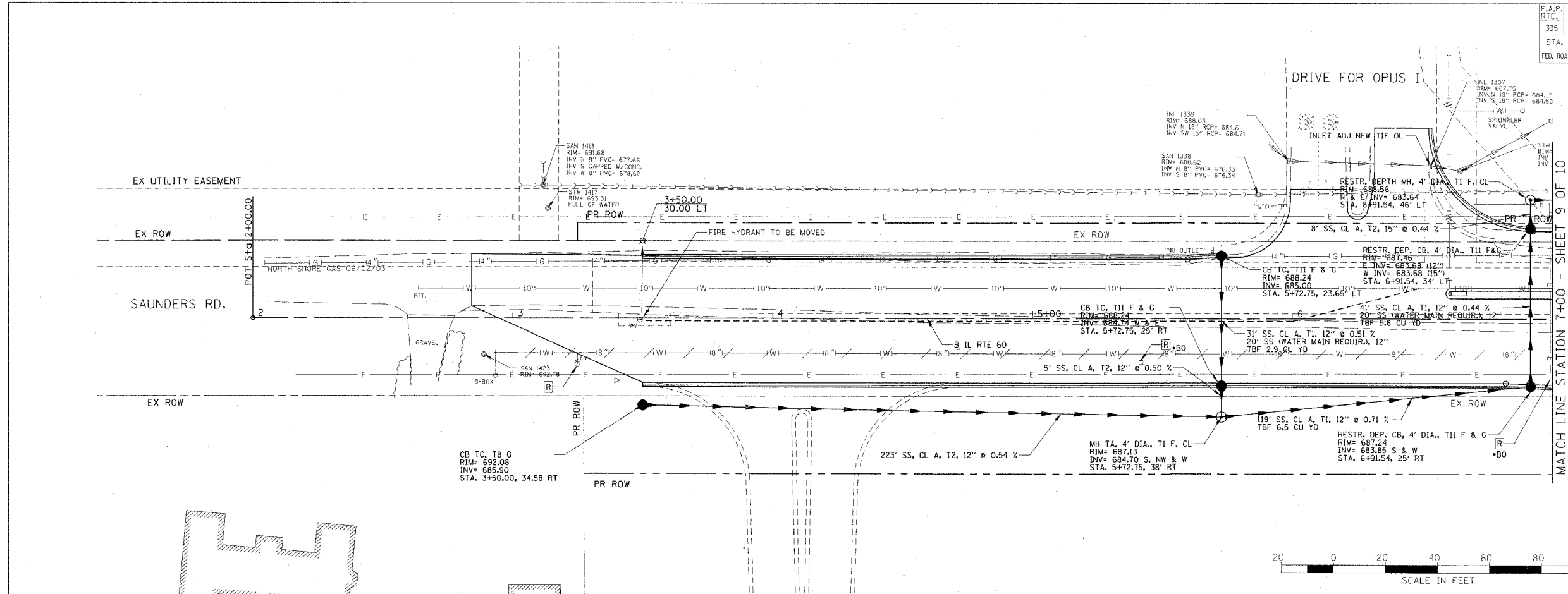


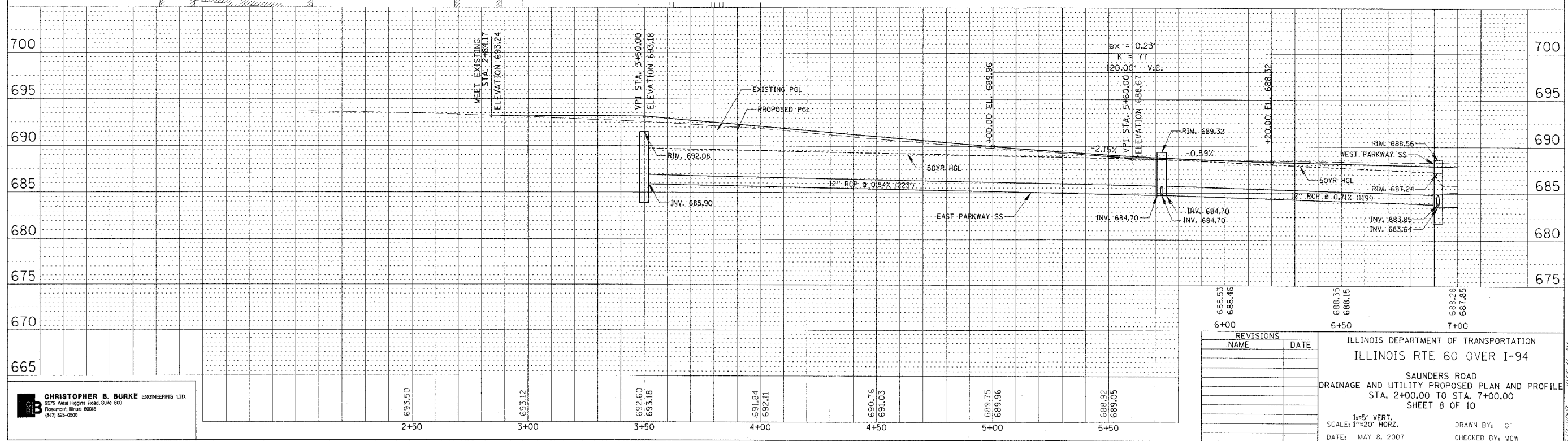
F.A.P. RTE.	SECTION	COUNTY	TOTAL SHEETS	SHEET NO.
335	119R-2	LAKE	439	149
STA. 432+63.12		TO STA. 470+56.84		
FED. ROAD DIST. NO. ILLINOIS FED. AID PROJECT				

60B01

PLAN	DATE
BY	
REVISIONS	
NO.	



PROFILE	DATE
BY	
REVISIONS	
NO.	



REVISIONS	NAME	DATE

ILLINOIS DEPARTMENT OF TRANSPORTATION
 ILLINOIS RTE 60 OVER I-94
 SAUNDERS ROAD
 DRAINAGE AND UTILITY PROPOSED PLAN AND PROFILE
 STA. 2+00.00 TO STA. 7+00.00
 SHEET 8 OF 10
 1"=5' VERT.
 SCALE: 1"=20' HORZ.
 DATE: MAY 8, 2007
 DRAWN BY: GT
 CHECKED BY: MCW

CHRISTOPHER B. BURKE ENGINEERING LTD.
 9275 West Higgins Road, Suite 600
 Rosemont, Illinois 60018
 (847) 823-0500

5/27/2007 10:06:36 AM