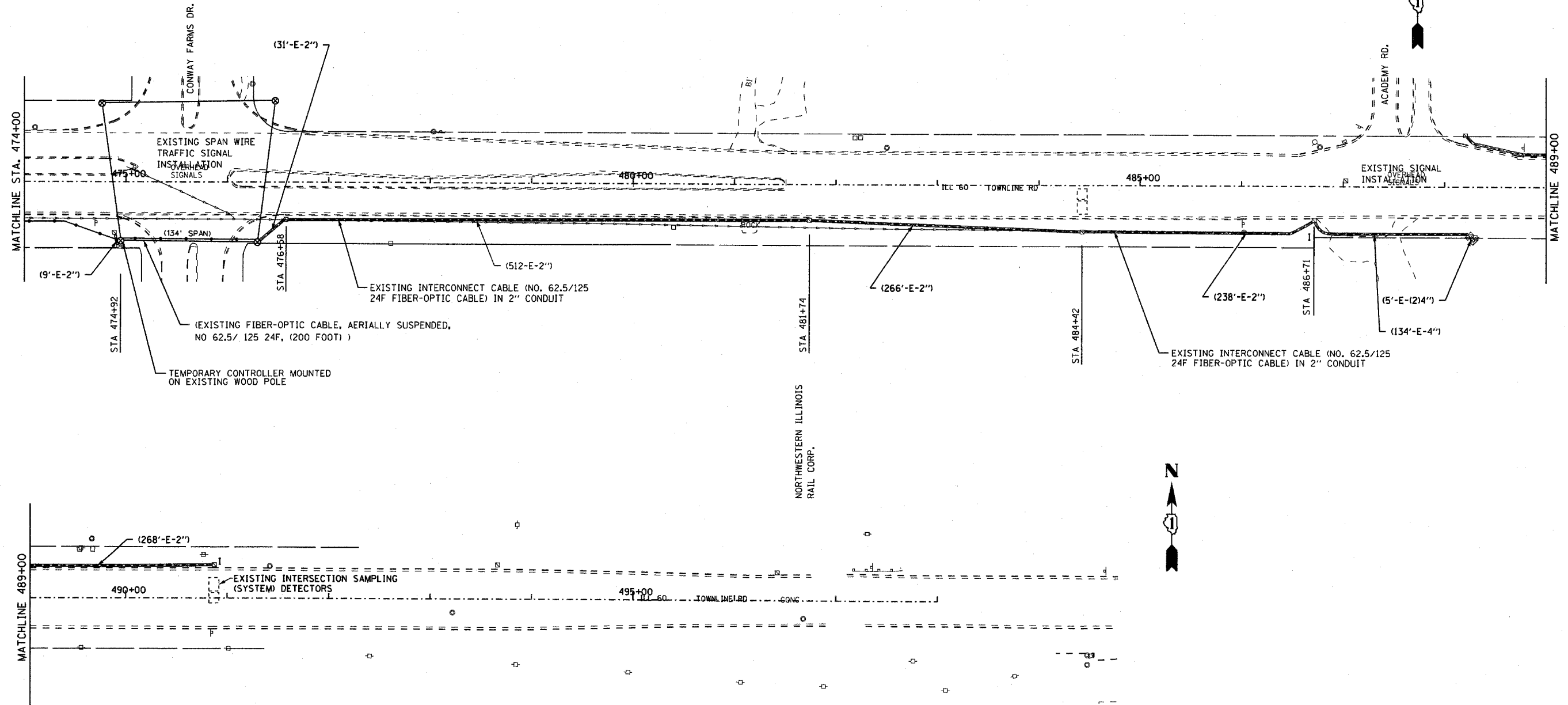


F.A.P. RTE.	SECTION	COUNTY	TOTAL SHEETS	SHEET NO.
335	119R-2	LAKE	439	228
STA.		TO STA.		
FED. ROAD DIST. NO.		ILLINOIS FED. AID PROJECT		

60B01



- NOTES:
- USE EXISTING FIBER OPTIC 24F CABLE FOR TEMPORARY INTERCONNECT - FROM CONWAY FARMS DRIVE CONTROLLER CABINET TO ACADEMY ROAD CONTROLLER CABINET. ALL STAGES.

EJM **EJM ENGINEERING, INC.**
 411 South Wells Street Suite 800
 Chicago, Illinois 60607

REVISIONS		NAME	DATE
NO.	DESCRIPTION		

ILLINOIS DEPARTMENT OF TRANSPORTATION
 TEMPORARY INTERCONNECT PLAN
 ILL ROUTE 60
 ST. MARY'S ROAD TO ACADEMY DRIVE
 STAGES 1, 1A, 2

S.N. DESIGNED BY: JM
 SCALE: 1" = 50'-0" DRAWN BY: PK
 DATE: MAY 8, 2007 CHECKED BY: GR