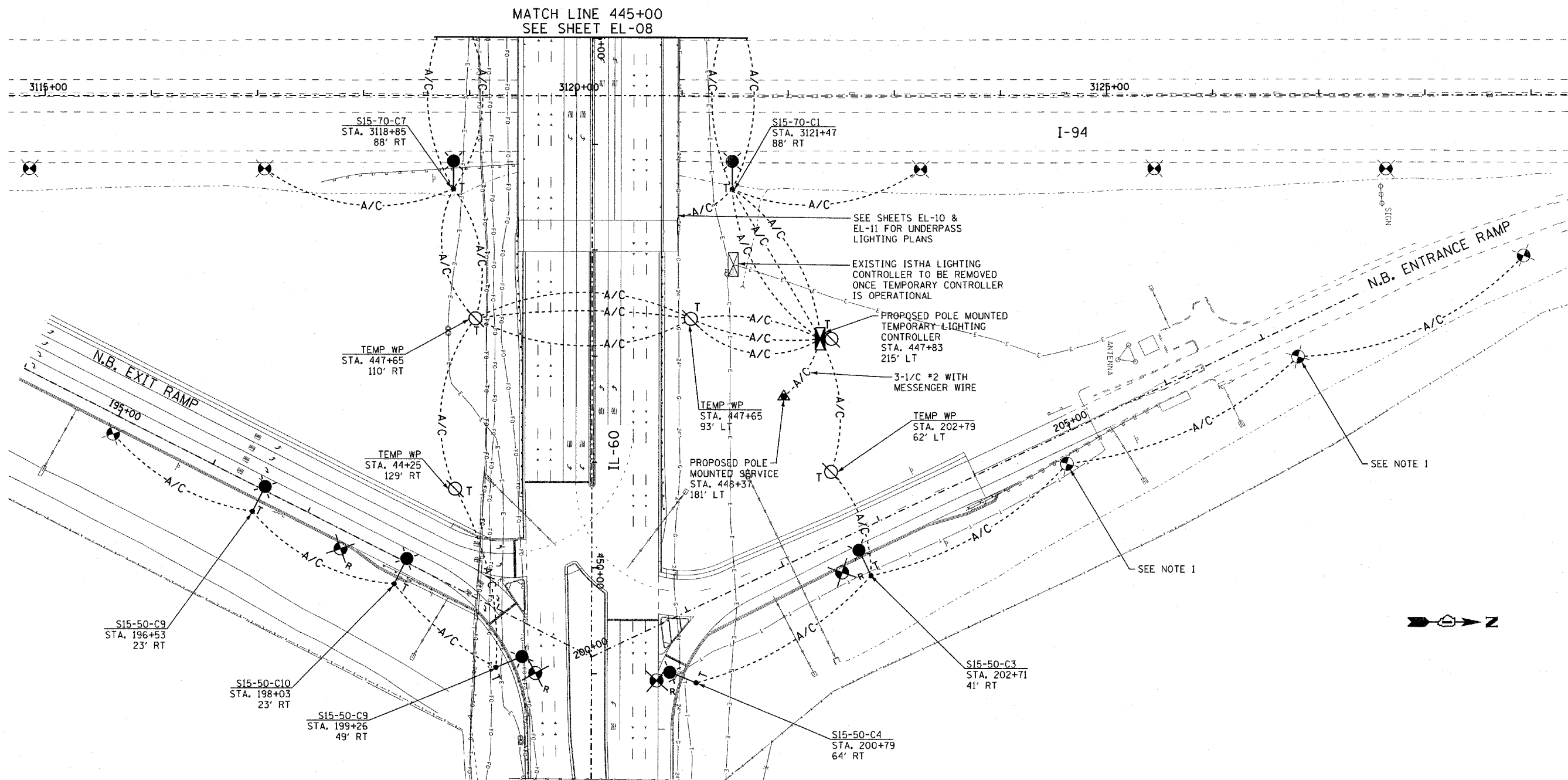


F.A.P. RTE.	SECTION	COUNTY	TOTAL SHEETS	SHEET NO.
335	119R-2	LAKE	439	243
STA. 445+00		TO STA. 452+00		
FED. ROAD DIST. NO. ILLINOIS FED. AID PROJECT				

60B01



MATCH LINE 445+00  
SEE SHEET EL-08

SEE SHEETS EL-10 & EL-11 FOR UNDERPASS LIGHTING PLANS  
EXISTING ISTHA LIGHTING CONTROLLER TO BE REMOVED ONCE TEMPORARY CONTROLLER IS OPERATIONAL

PROPOSED POLE MOUNTED TEMPORARY LIGHTING CONTROLLER  
STA. 447+83  
215' LT

3-1/2" #2 WITH MESSENGER WIRE

TEMP WP  
STA. 447+65  
93' LT

PROPOSED POLE MOUNTED SERVICE  
STA. 448+37  
181' LT

TEMP WP  
STA. 202+79  
62' LT

S15-50-C3  
STA. 202+71  
41' RT

S15-50-C4  
STA. 200+79  
64' RT

S15-50-C9  
STA. 196+53  
23' RT

S15-50-C10  
STA. 198+03  
23' RT

S15-50-C9  
STA. 199+26  
49' RT

TEMP WP  
STA. 447+65  
110' RT

TEMP WP  
STA. 44+25  
129' RT

S15-70-C7  
STA. 3118+85  
88' RT

S15-70-C1  
STA. 3121+47  
88' RT



- NOTES:
- ATTACH AERIAL CABLE TO LIGHT POLE BUT DO NOT CONNECT AERIAL CABLE TO LIGHT POLE CIRCUITRY. ANY DAMAGE CAUSED BY CONNECTING THIS CIRCUIT WILL BE REPAIRED AT THE CONTRACTOR'S EXPENSE.

**EJM ENGINEERING, INC.**  
411 South Wells Street Suite 800  
Chicago, Illinois 60607

REVISIONS	
NAME	DATE

ILLINOIS DEPARTMENT OF TRANSPORTATION  
ILLINOIS RTE 60 OVER I-94  
TEMPORARY ROADWAY LIGHTING PLAN  
I-94 NORTHBOUND RAMP

S.N. \_\_\_\_\_ DESIGNED BY: JDM  
SCALE: 1"=50'-0" DRAWN BY: JDM  
DATE: MAY 8, 2007 CHECKED BY: RES

SHEET EL-09 OF 13