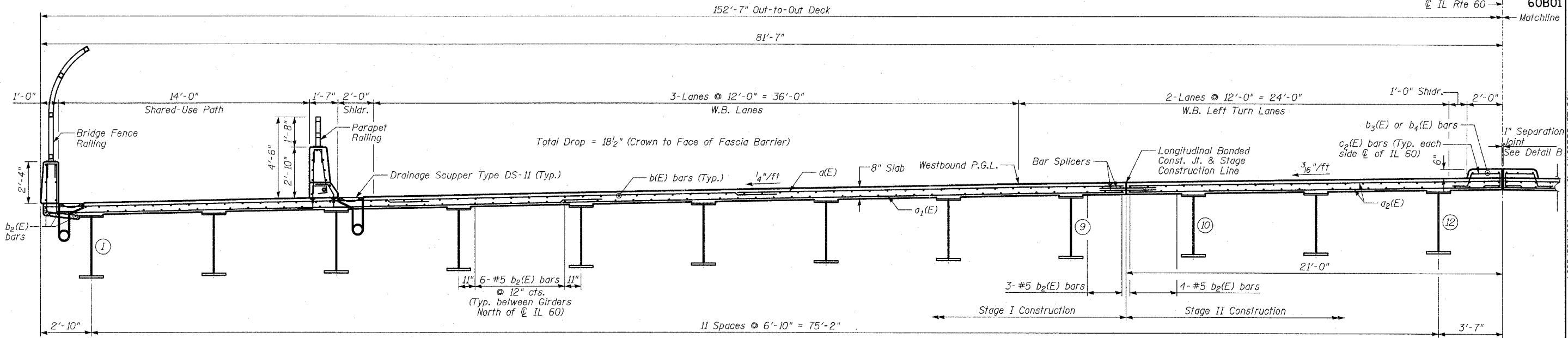
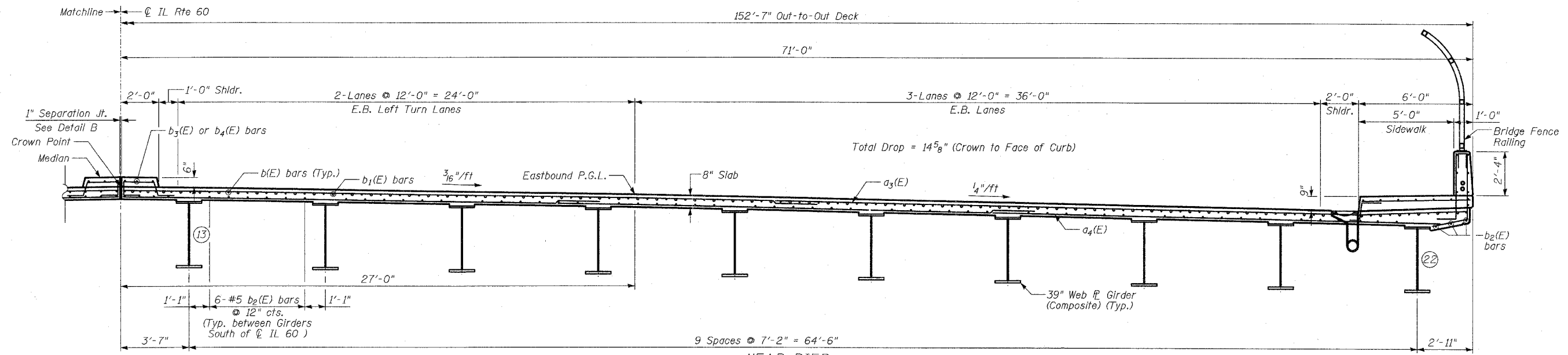


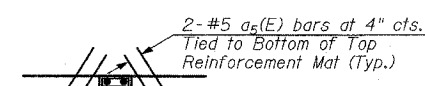
F.A.P. RTE.	SECTION	COUNTY	TOTAL SHEETS	SHEET NO.
335	119R-2	LAKE	439	263
STA. 432+83.12		TO STA. 470+56.84		
FED. ROAD DIST. NO.	ILLINOIS	FED. AID PROJECT		



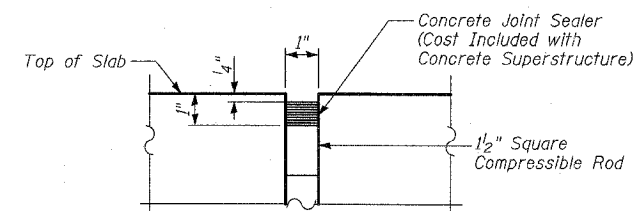
NEAR MIDSPAN
WESTBOUND SECTION THRU DECK
(Looking East)



NEAR PIER
EASTBOUND SECTION THRU DECK
(Looking East)



DETAIL A



DETAIL B

REVISIONS	
NAME	DATE

ILLINOIS DEPARTMENT OF TRANSPORTATION
 DECK CROSS SECTION
 ILLINOIS 60 OVER I-94
 F.A.P. RTE. 335 SECTION 119R-2
 LAKE COUNTY STA. 445+54.14
 S.N. 049-2012 ISTHA BRIDGE NO. 407
 DESIGNED BY: SNB
 DRAWN BY: SNB
 SCALE: DATE: MAY 8, 2007
 CHECKED BY: SP

TYLIN INTERNATIONAL

SHEET S-16 OF S-53

P:\60216811-60\STRUCTURE\119R\119R016.DWG