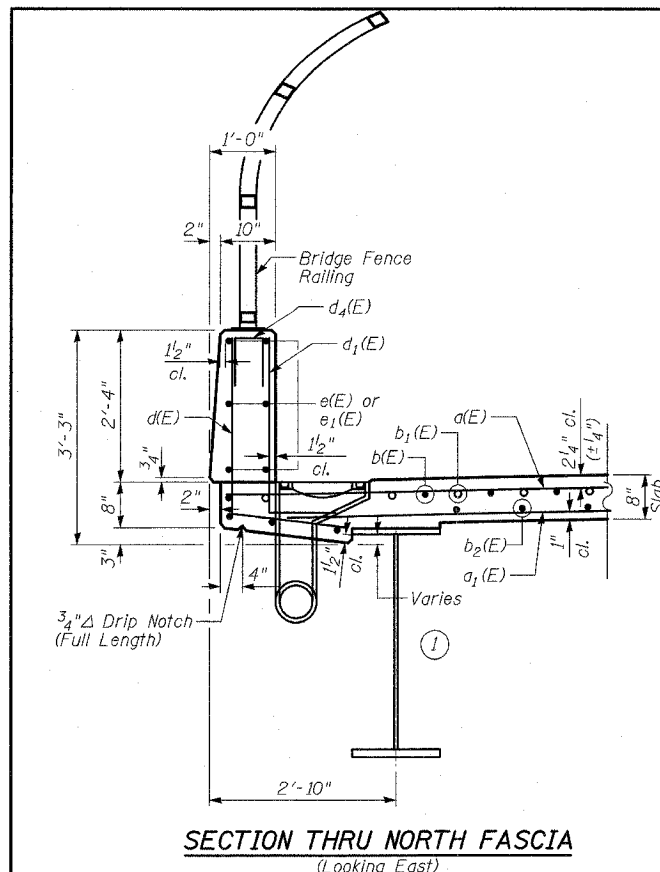


F.A.P. RTE.	SECTION	COUNTY	TOTAL SHEETS	SHEET NO.
335	119R-2	LAKE	439	264
STA. 432+83.12		TO STA. 470+56.84		
FED. ROAD DIST. NO.	ILLINOIS	FED. AID PROJECT		

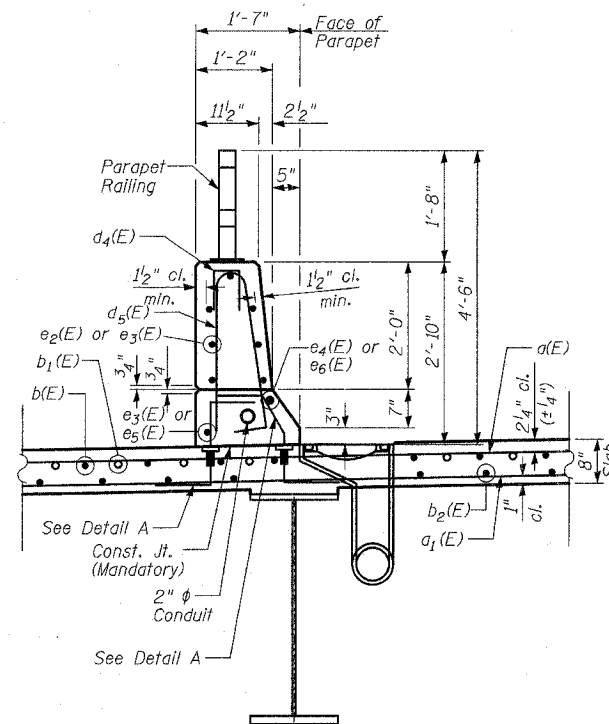
60B01

**BILL OF MATERIAL**

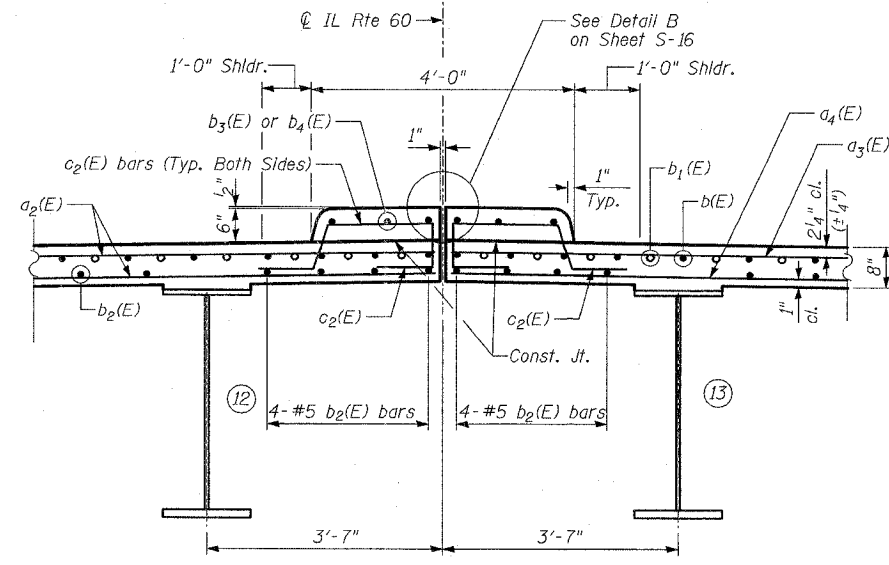
Bar	No.	Size	Length	Shape
a(E)	1209	#5	21'-7"	
a <sub>1</sub> (E)	566	#5	31'-3"	
a <sub>2</sub> (E)	686	#5	20'-7"	
a <sub>3</sub> (E)	806	#5	36'-5"	
a <sub>4</sub> (E)	849	#5	25'-0"	
a <sub>5</sub> (E)	192	#5	2'-0"	
b(E)	1304	#5	31'-3"	
b <sub>1</sub> (E)	456	#6	27'-9"	
b <sub>2</sub> (E)	1215	#5	28'-1"	
b <sub>3</sub> (E)	36	#5	33'-10"	
b <sub>4</sub> (E)	12	#5	19'-10"	
b <sub>5</sub> (E)	270	#6	5'-4"	
c(E)	236	#5	2'-5"	
c <sub>1</sub> (E)	236	#5	5'-8"	
c <sub>2</sub> (E)	472	#5	4'-9"	
d(E)	230	#4	4'-5"	
d <sub>1</sub> (E)	230	#6	3'-8"	
d <sub>2</sub> (E)	230	#4	5'-3"	
d <sub>3</sub> (E)	230	#6	4'-5"	
d <sub>4</sub> (E)	156	#4	2'-0"	
d <sub>5</sub> (E)	257	#5	5'-7"	
e(E)	120	#4	18'-7"	
e <sub>1</sub> (E)	24	#4	19'-10"	
e <sub>2</sub> (E)	70	#4	19'-2"	
e <sub>3</sub> (E)	16	#4	19'-8"	
e <sub>4</sub> (E)	6	#8	34'-8"	
e <sub>5</sub> (E)	6	#4	33'-4"	
e <sub>6</sub> (E)	2	#8	19'-8"	
m(E)	120	#6	6'-8"	
m <sub>1</sub> (E)	12	#6	4'-2"	
m <sub>2</sub> (E)	84	#6	6'-6"	
m <sub>3</sub> (E)	72	#6	6'-1"	
m <sub>4</sub> (E)	16	#6	31'-0"	
m <sub>5</sub> (E)	8	#6	20'-7"	
m <sub>6</sub> (E)	16	#6	36'-3"	
s <sub>2</sub> (E)	262	#4	9'-11"	



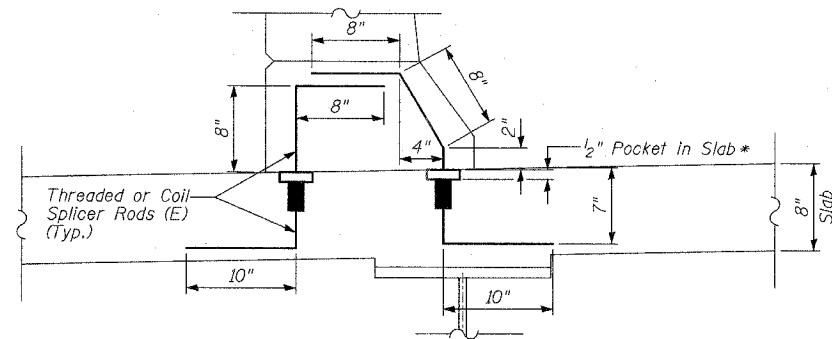
SECTION THRU NORTH FASCIA  
(Looking East)



SECTION THRU TYPE F PARAPET  
(Looking East)

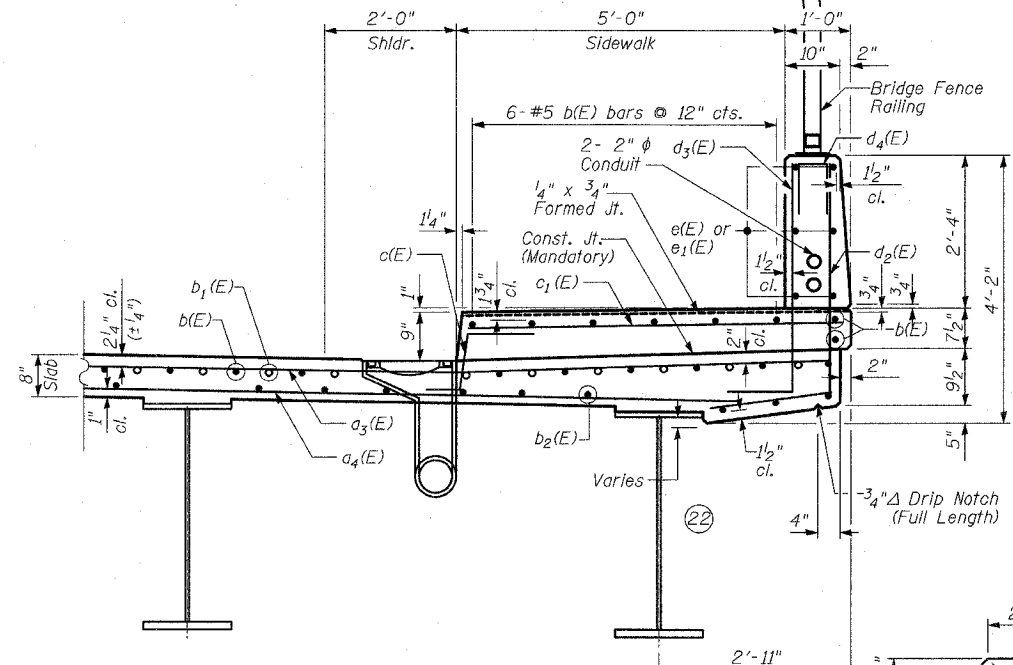


SECTION THRU MEDIAN  
(Looking East)

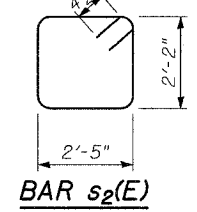


DETAIL A

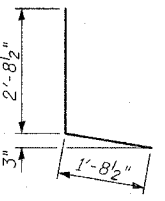
\*During Stage II Construction attach 5/8" φ galvanized hex bolts to couplers. Cost of bolts included in Bar Splicers.  
Located in F-Shape parapet (257 required each side = 514 total)  
See Sheet S-38 for Minimum Capacity and Pull Out Strength Required.



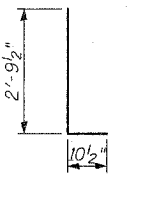
SECTION THRU SIDEWALK  
(Looking East)



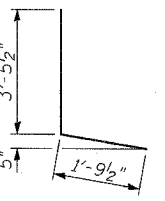
BAR s<sub>2</sub>(E)



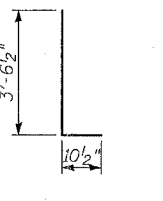
BAR d(E)



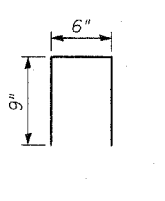
BAR d<sub>1</sub>(E)



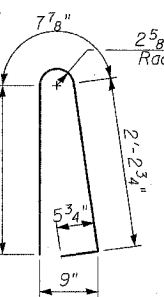
BAR d<sub>2</sub>(E)



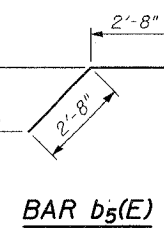
BAR d<sub>3</sub>(E)



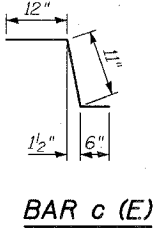
BAR d<sub>4</sub>(E)



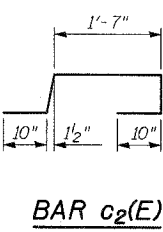
BAR d<sub>5</sub>(E)



BAR b<sub>5</sub>(E)



BAR c(E)



BAR c<sub>2</sub>(E)

**BILL OF MATERIAL**

ITEM	UNIT	TOTAL
Concrete Superstructure	CU YD	1154
Reinforcement Bars, Epoxy Coated	POUND	234,780
Bridge Deck Grooving	SQ YD	3186
Protective Coat	SQ YD	4311
Bar Splicers	EACH	1486

REVISIONS	
NAME	DATE

SHEET S-17 OF S-53  
ILLINOIS DEPARTMENT OF TRANSPORTATION  
**DECK DETAILS, BAR LIST & BILL OF MAT'L**  
ILLINOIS 60 OVER I-94  
F.A.P. RTE. 335 SECTION 119R-2  
LAKE COUNTY STA. 445+54.14  
S.N. 049-2012 ISTHA BRIDGE NO. 407  
DESIGNED BY: DE  
DRAWN BY: DE  
SCALE: DATE: MAY 8, 2007  
CHECKED BY: SP

TYLIN INTERNATIONAL

P:\60245R11-60\Structural\Ina\1160BRDR\DT6.DWG 05/03/2007 04:30:19 PM