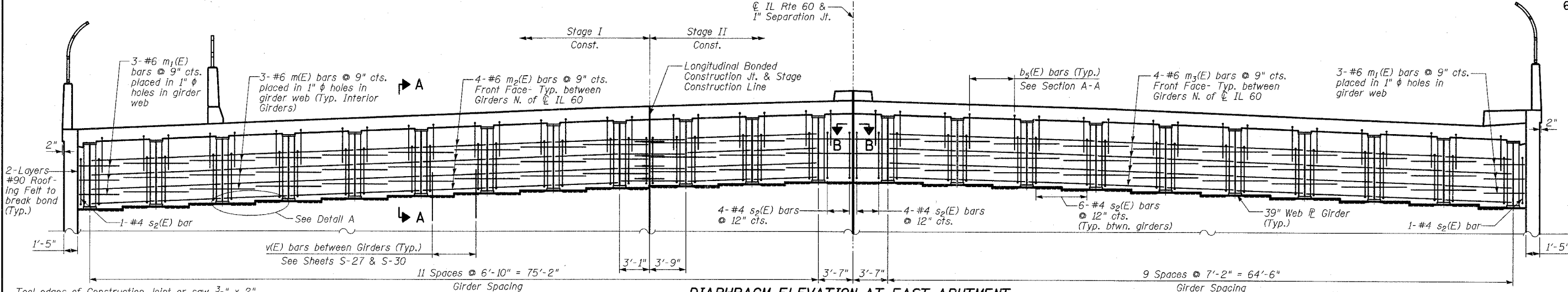
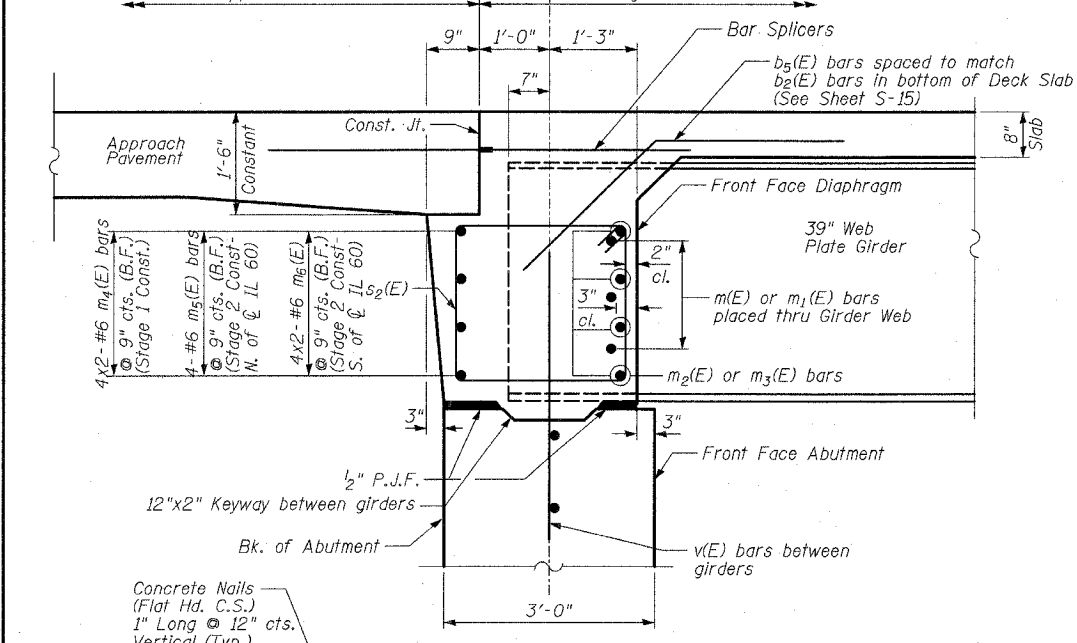


F.A.P. RTE.	SECTION	COUNTY	TOTAL SHEETS	SHEET NO.
335	119R-2	LAKE	439	267
STA. 432+83.12		TO STA. 470+56.84		
FED. ROAD DIST. NO.	ILLINOIS	FED. AID PROJECT		

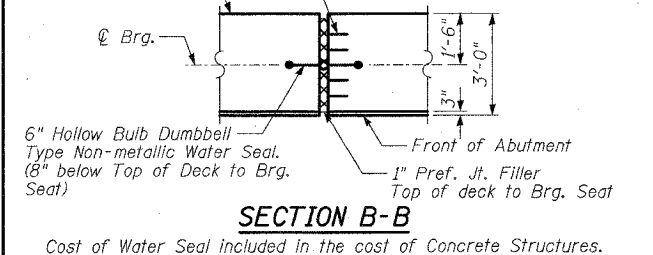
60B01



Tool edges of Construction Joint or saw 3/8" x 2" and fill with hot poured Low Modulus Polymer Sealant meeting the requirements of ASTM D3405. Cost included with Bridge Approach Pavement (Special).



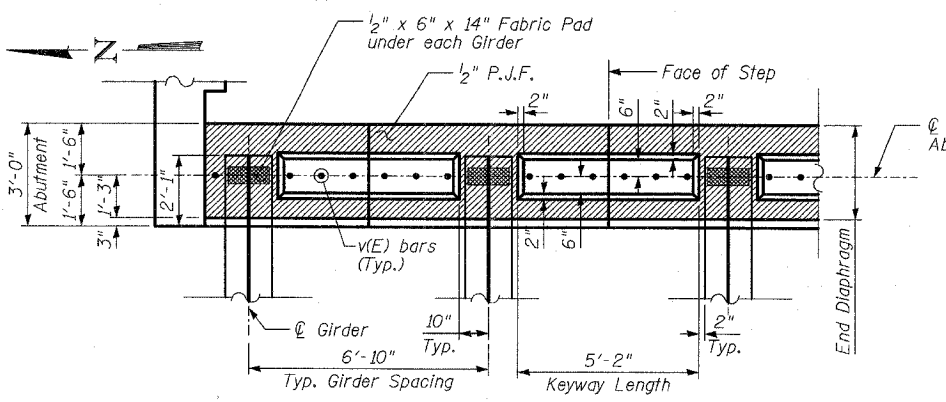
SECTION A-A



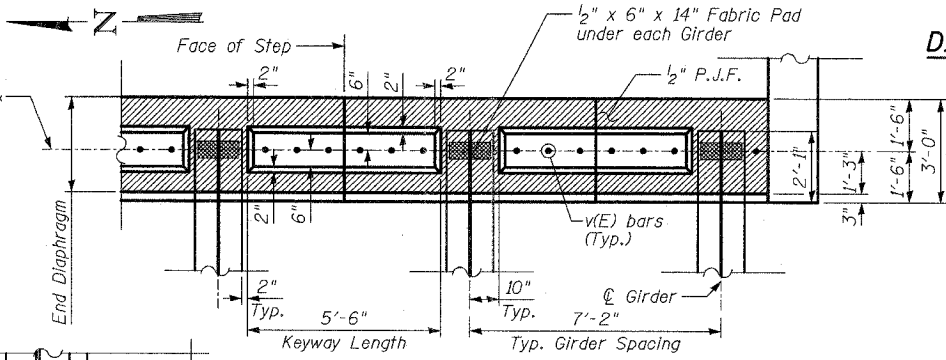
SECTION B-B

Cost of Water Seal included in the cost of Concrete Structures.

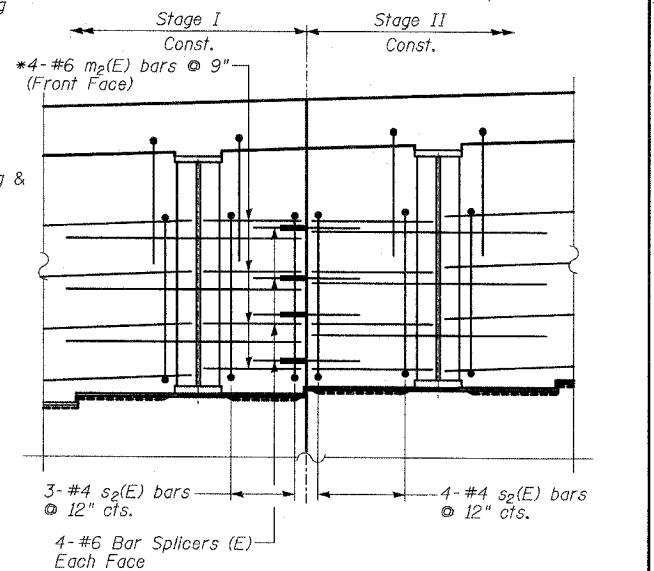
DIAPHRAGM ELEVATION AT EAST ABUTMENT (West Abutment Opposite Hand)



DIAPHRAGM PLAN AT ABUTMENT (Typ. North of CL IL 60)



DIAPHRAGM PLAN AT ABUTMENT (Typ. South of CL IL 60)



DIAPHRAGM ELEVATION AT STAGE CONSTRUCTION LINE

*Order bars m₂(E) full length and cut to fit. Use the remainder in Stage II Construction. Connect using #6 Bar Splacers.

NOTES:

1. Reinforcement bars in Diaphragm are billed with Superstructure on Sheet S-17.
2. Concrete in Diaphragm is included with Concrete Superstructure on Sheet S-17.
3. Bars indicated thus 4x2-#6 etc. indicates 4 lines of bars with 2 lengths per line.

MINIMUM BAR LAPS (Diaphragms)

Bar	Lap
#6	2'-9"

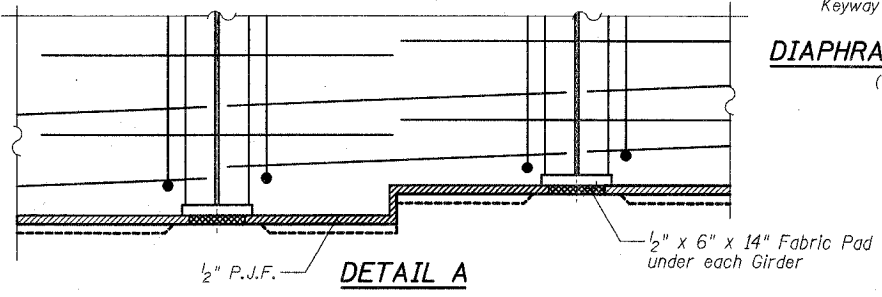
REVISIONS	
NAME	DATE

SHEET S-20 OF S-53

ILLINOIS DEPARTMENT OF TRANSPORTATION
 INTEGRAL ABUT. DIAPHRAGM DETAILS
 ILLINOIS 60 OVER I-94
 F.A.P. RTE. 335 SECTION 119R-2
 LAKE COUNTY STA. 445+54.14
 S.N. 049-2012 ISTHA BRIDGE NO. 407
 DESIGNED BY: DE
 DRAWN BY: DE
 CHECKED BY: SP

SCALE:
 DATE: MAY 8, 2007

TYLIN INTERNATIONAL



DETAIL A

1A160245817401Structur\Final\60B01\KOT2.DGN

05/03/2007 04:30:31 PM