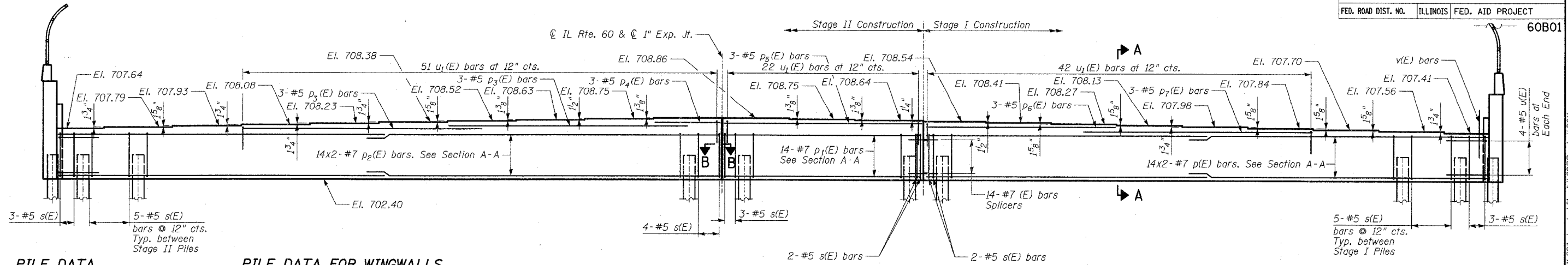


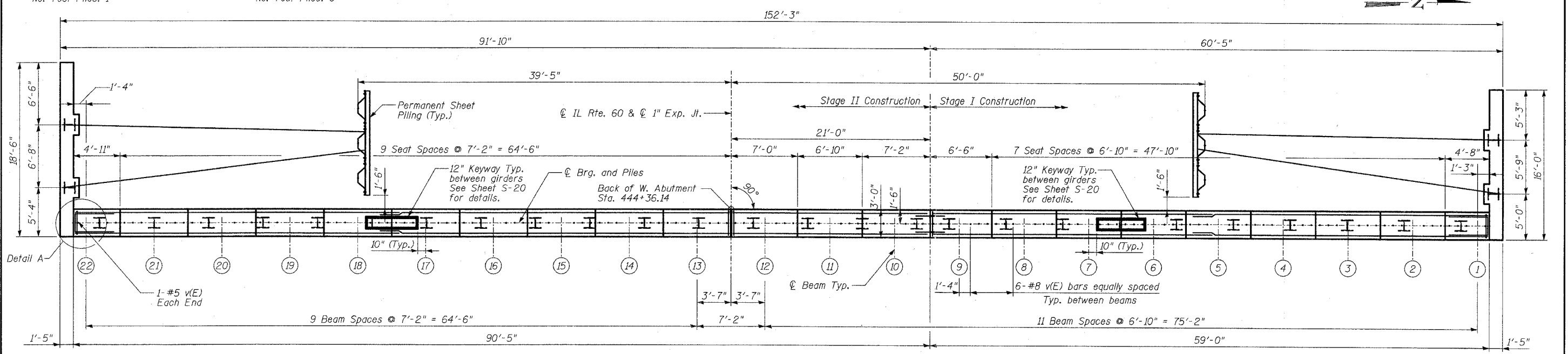
F.A.P. RTE.	SECTION	COUNTY	TOTAL SHEETS	SHEET NO.
335	119R-2	LAKE	439	274
STA. 432+83.12		TO STA. 470+56.84		
FED. ROAD DIST. NO.	ILLINOIS	FED. AID PROJECT		



PILE DATA
 Type: Steel HP 14x73
 Nominal Required Bearing: 480 Kips
 Allowable Resistance Available: 160 Kips
 Estimated Length: 52'-6" Ft
 No. Production Piles: 25
 No. Test Piles: 1

PILE DATA FOR WINGWALLS
 Type: Steel HP 14x73
 Nominal Required Bearing: 480 Kips
 Allowable Resistance Available: 160 Kips
 Estimated Length: 52'-0" Ft
 No. Production Piles: 4
 No. Test Piles: 0

ELEVATION
 (Looking West)



PLAN

MINIMUM BAR LAPS
 (Abutments)

Bar	Lap
#5	2'-2"
#7	4'-10"

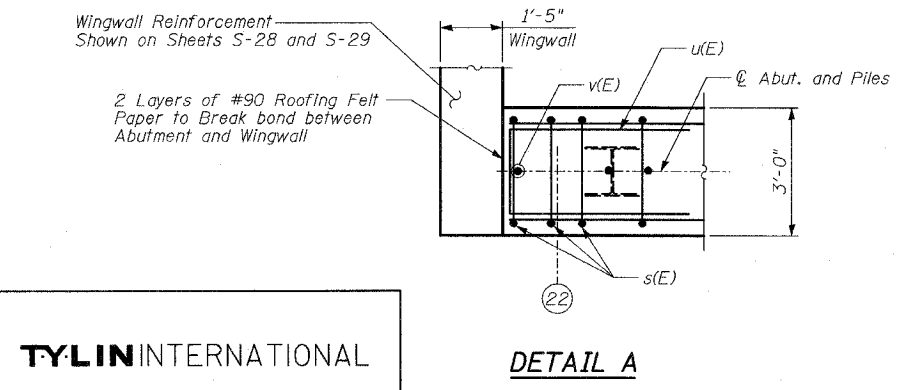
NOTES

1. Pour steps monolithically with cap.
2. For Pile Layout and Spacing See Sheet S-3.
3. See Sheet S-29 for Section A-A.
4. v(E) bars shall be cast in place and not mucked-in after the pile cap is placed.
5. See Sheet S-20 for Keyway details.

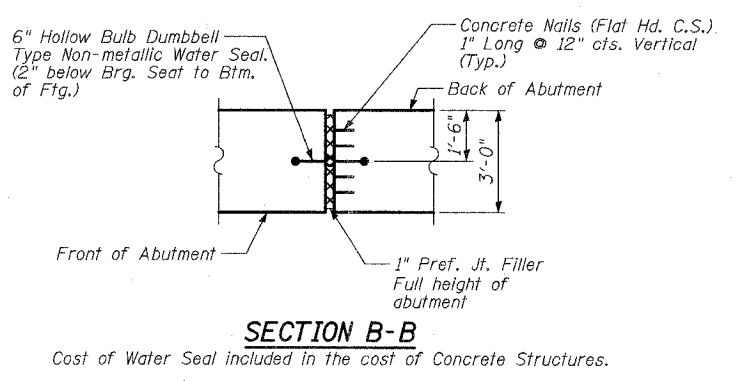
REVISIONS	
NAME	DATE

SHEET S-27 OF S-53

ILLINOIS DEPARTMENT OF TRANSPORTATION
 WEST ABUTMENT
 ILLINOIS 60 OVER I-94
 F.A.P. RTE. 335 SECTION 119R-2
 LAKE COUNTY STA. 445+54.14
 S.N. 049-2012 ISTHA BRIDGE NO. 407
 DESIGNED BY: TB
 DRAWN BY: TB
 CHECKED BY: SP
 SCALE:
 DATE: MAY 8, 2007



DETAIL A



SECTION B-B

Cost of Water Seal included in the cost of Concrete Structures.

TYLIN INTERNATIONAL

Pa:60246811-601-structure\1\Ina\160BwAbut.DGN 05/03/2007 04:30:42 PM