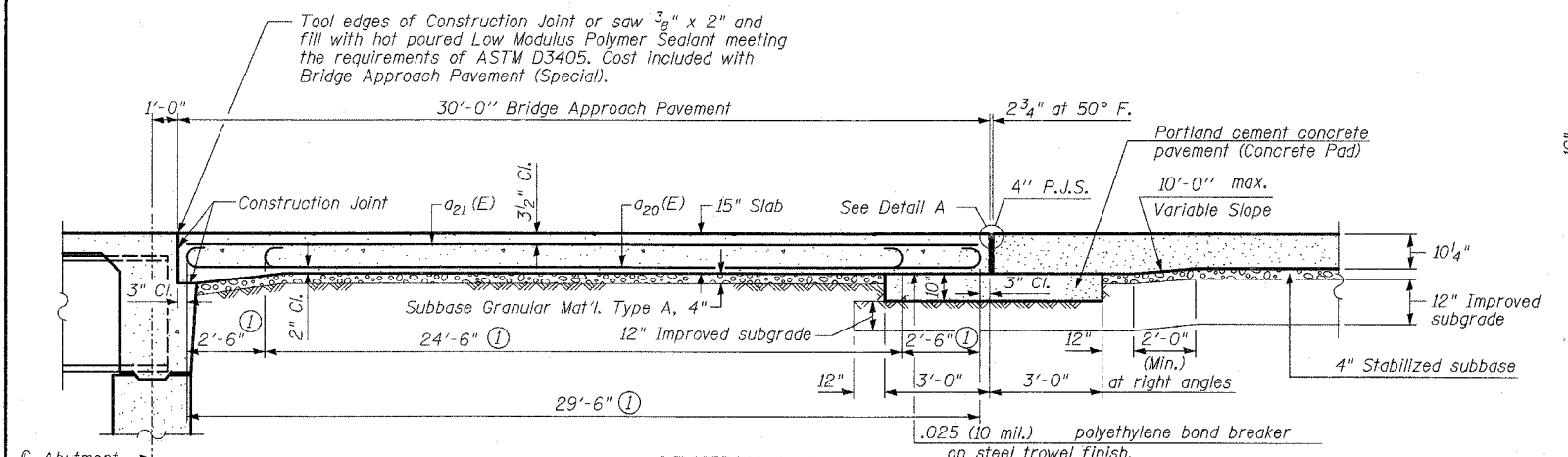


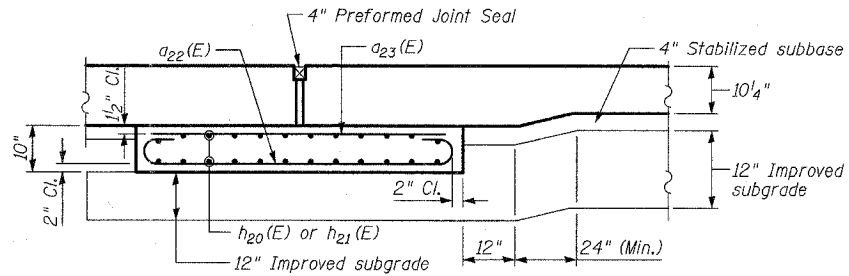
F.A.P. RTE. 335	SECTION 119R-2	COUNTY LAKE	TOTAL SHEETS 439	SHEET NO. 296
STA. 432+83.12		TO STA. 470+56.84		
FED. ROAD DIST. NO.		ILLINOIS	FED. AID PROJECT	

60B01



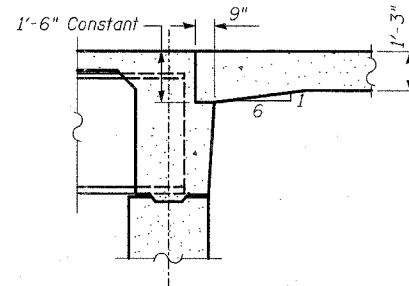
SECTION A-A

(1) Stagger $a_{20}(E)$ bars as shown on plan - full width

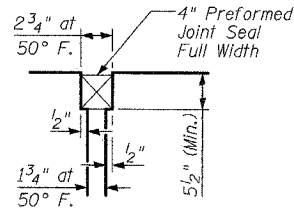


SECTION B-B - RIGID PAVEMENT

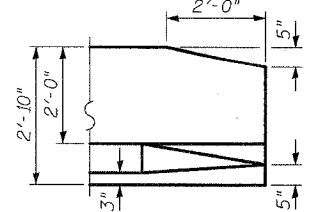
(Showing reinforcement)



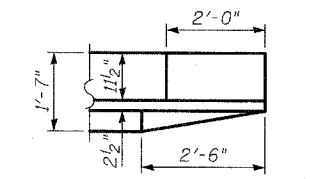
SECTION AT INTEGRAL ABUTMENT



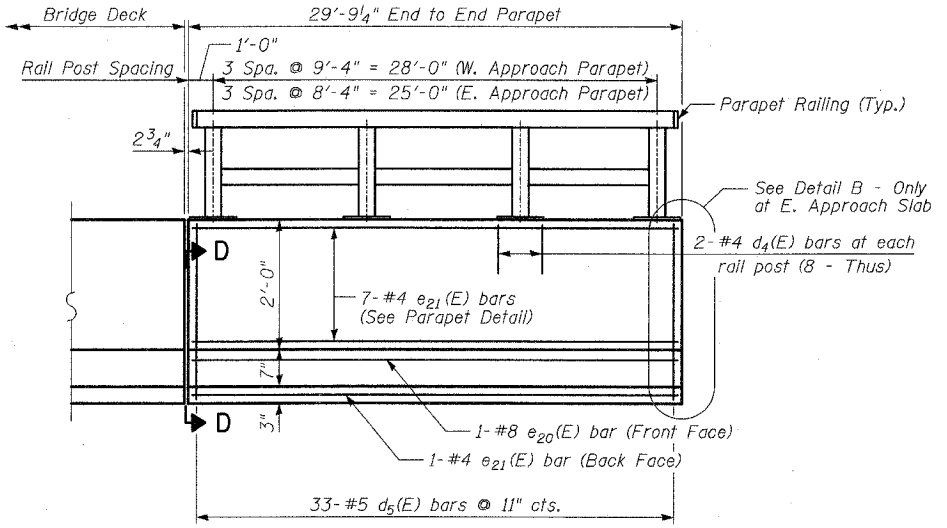
DETAIL A



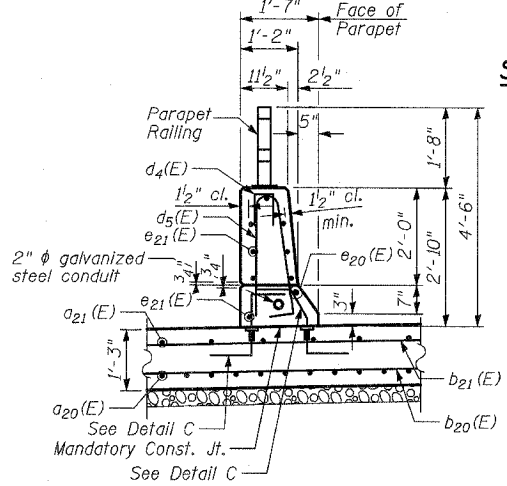
DETAIL B



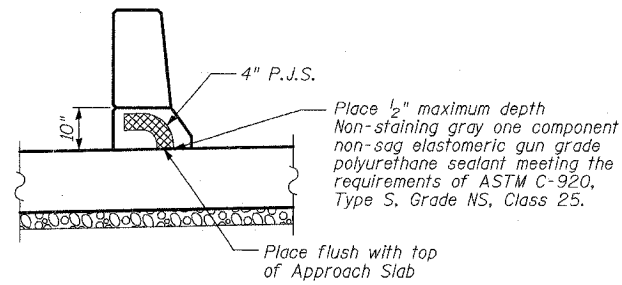
PLAN



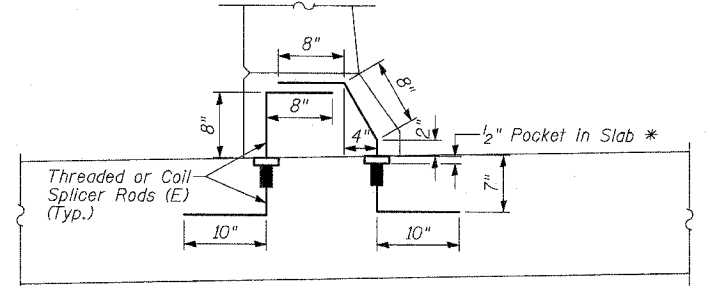
INSIDE ELEVATION OF TYPE F PARAPET



TYPE F PARAPET DETAIL

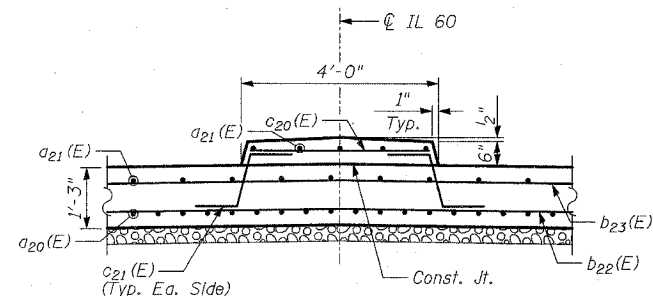


SECTION D-D



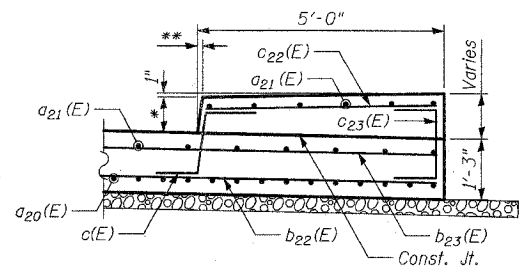
DETAIL C

*During Stage II Construction attach $\frac{5}{8}$ " ϕ galvanized hex bolts to couplers. Cost of bolts included in Bar Splicers. Located in F-Shape parapet (33 required each side both approaches = 132 total) See Sheet S-38 for Minimum Capacity and Pull Out Strength Required.



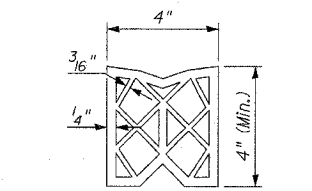
MEDIAN DETAIL

Median Notes:
Transition median from detail above to match Type SB-6.12 at end of Approach Pavement.



SIDEWALK DETAIL

Sidewalk Notes:
* Vary sidewalk thickness. Thickness is 9" from abutment to end of wingwall and varies from 9" at end of wingwall to 6" at end of approach pavement.
** Vary dimension. $1\frac{1}{4}$ " from end of abutments to end of wingwall. Varies $1\frac{1}{4}$ " at end of wingwall to match B-6.12 Curb and Gutter at end of approach pavement.



PREFORMED JOINT SEAL

REVISIONS	
NAME	DATE

ILLINOIS DEPARTMENT OF TRANSPORTATION
APPROACH PAVEMENT DETAILS - I
ILLINOIS 60 OVER I-94
F.A.P. RTE. 335 SECTION 119R-2
LAKE COUNTY STA. 445+54.14
S.N. 049-2012 ISTHA BRIDGE NO. 407
DESIGNED BY: PL
DRAWN BY: SNB
CHECKED BY: SP
SCALE:
DATE: MAY 8, 2007

05/03/2007 04:31:30 PM P:\60245811\60\Structur\I\I60\Approv\I\60B\Approv\I.DGN