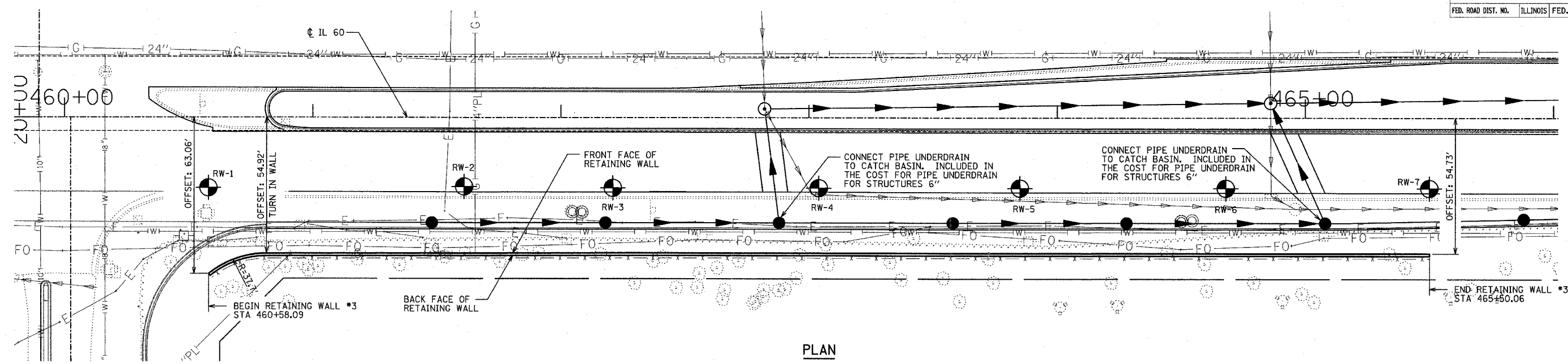
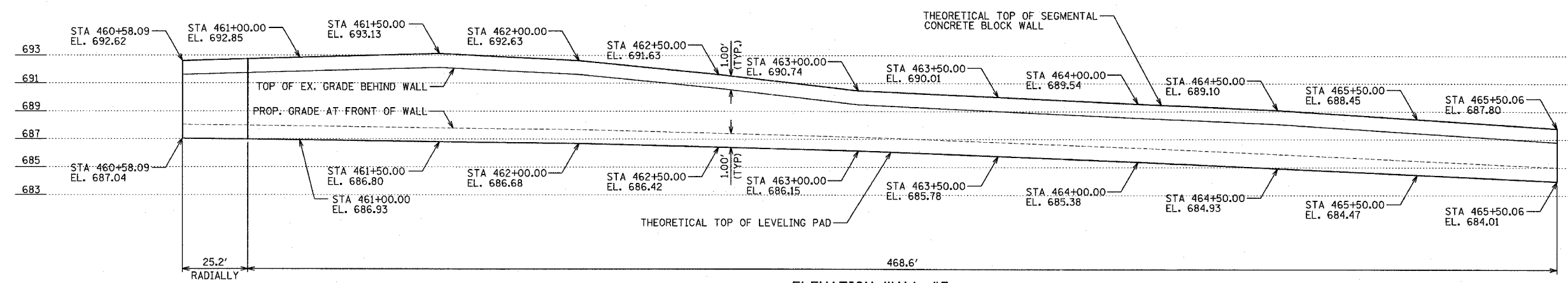


F.A.P. RTE.	SECTION	COUNTY	TOTAL SHEETS	SHEET NO.
335	119R-2	LAKE	439	303
STA. 432+83.12		TO STA. 470+56.84		
FED. ROAD DIST. NO. ILLINOIS FED. AID PROJECT				

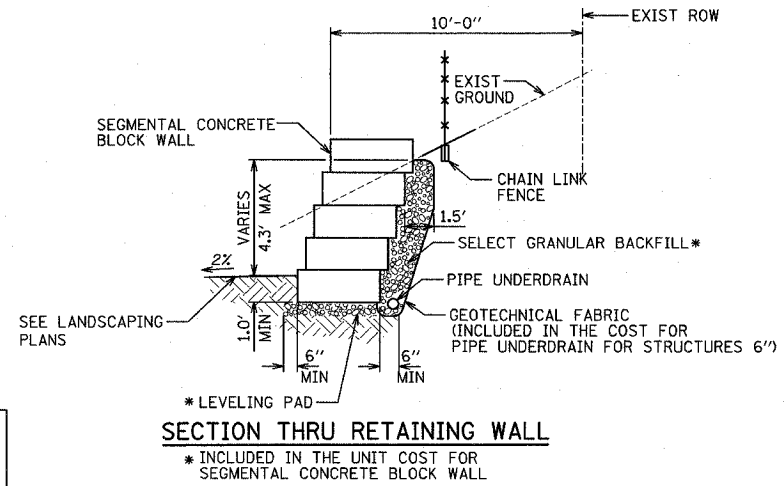
60B01



PLAN



ELEVATION WALL #3
SCALED (5:1) (V:H)



SECTION THRU RETAINING WALL
* INCLUDED IN THE UNIT COST FOR SEGMENTAL CONCRETE BLOCK WALL

BILL OF MATERIAL

ITEM	UNIT	TOTAL
STRUCTURE EXCAVATION	CU YD	456
PIPE UNDERDRAIN FOR STRUCTURES 6"	FOOT	500
CHAIN LINK FENCE, 4'	FOOT	494
SEGMENTAL CONCRETE BLOCK WALL	SQ FT	1552

NOTES

- BLOCK SIZE, BATTER, SETBACK & NUMBER OF COURSES PER WALL SUPPLIER DESIGN. SEE SPECIAL PROVISIONS FOR ADDITIONAL REQUIREMENTS.

REVISIONS	
NAME	DATE

ILLINOIS DEPARTMENT OF TRANSPORTATION
ILLINOIS RTE 60 OVER I-94
SEGMENTAL CONCRETE BLOCK WALL 3
FROM STA 460+58.09 TO STA 465+50.06

SCALE: DRAWN BY: PL
DATE: MAY 8, 2007 CHECKED BY: SP

TYLIN INTERNATIONAL

05/09/2007 08:46:00 AM