

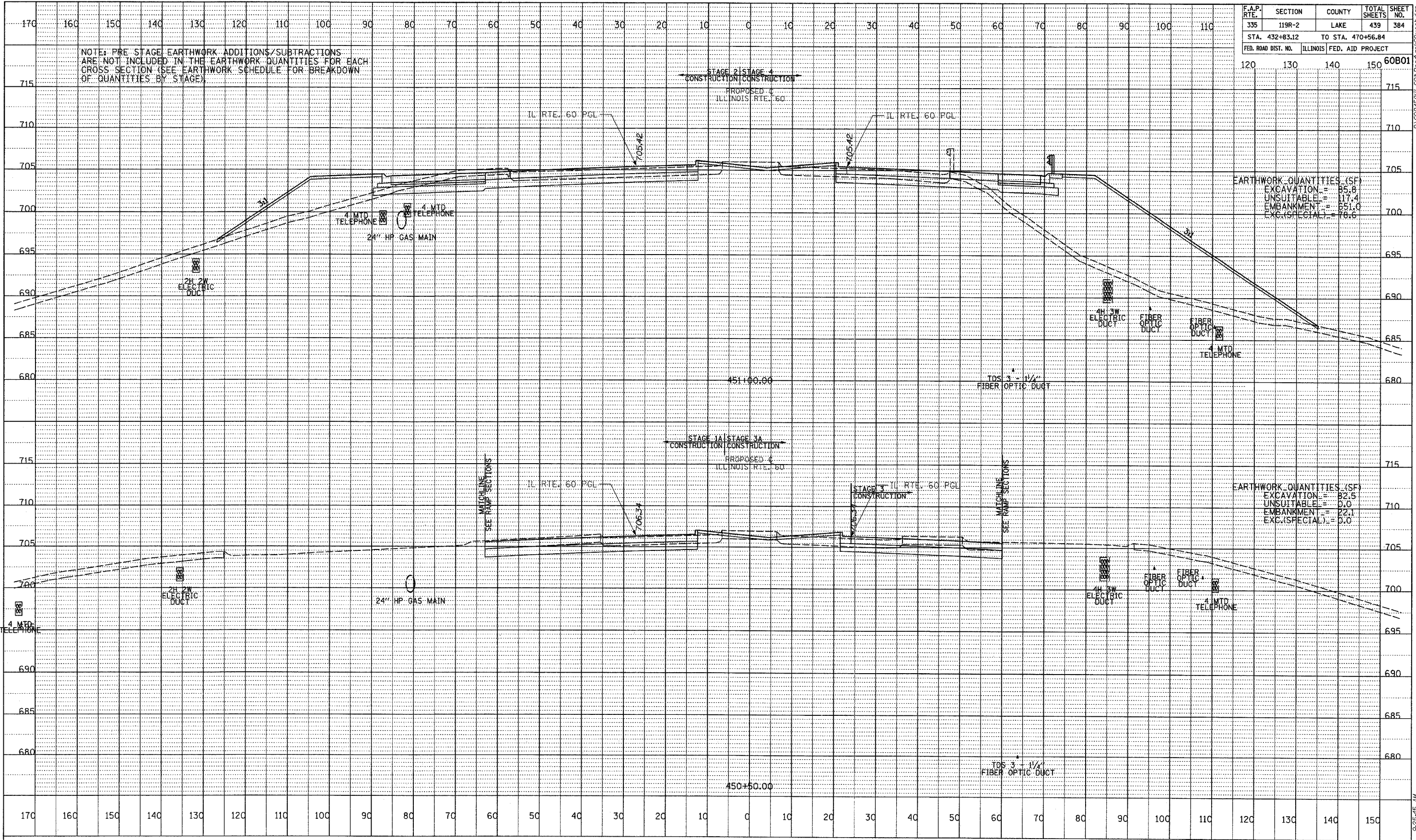
F.A.P. RTE.	SECTION	COUNTY	TOTAL SHEETS	SHEET NO.
335	119R-2	LAKE	439	384
STA. 432+83.12 TO STA. 470+56.84			ILLINOIS FED. AID PROJECT	
FED. ROAD DIST. NO.	ILLINOIS FED. AID PROJECT			

NOTE: PRE STAGE EARTHWORK ADDITIONS/SUBTRACTIONS ARE NOT INCLUDED IN THE EARTHWORK QUANTITIES FOR EACH CROSS SECTION (SEE EARTHWORK SCHEDULE FOR BREAKDOWN OF QUANTITIES BY STAGE)

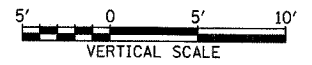
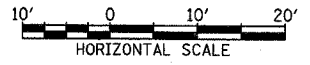
EARTHWORK QUANTITIES (SF)
 EXCAVATION = 55.8
 UNSUITABLE = 117.4
 EMBANKMENT = 851.0
 EXC.(SPECIAL) = 78.6

EARTHWORK QUANTITIES (SF)
 EXCAVATION = 82.5
 UNSUITABLE = 0.0
 EMBANKMENT = 22.1
 EXC.(SPECIAL) = 0.0

DATE	BY



TYLIN INTERNATIONAL



ILLINOIS RTE. 60 (TOWNLIN RD)
 STA. 450+50 TO STA. 451+00

9/25/2007 9:55:45 AM