

F.A.P. RYF	SECTION	COUNTY	TOTAL SHEETS	SHEET NO.
335	119R-2	LAKE	439	402
STA. 432+83.12		TO STA. 470+56.84		
FED. ROAD DIST. NO.		ILLINOIS FED. AID PROJECT		
120		130 140 150		
		60B01		

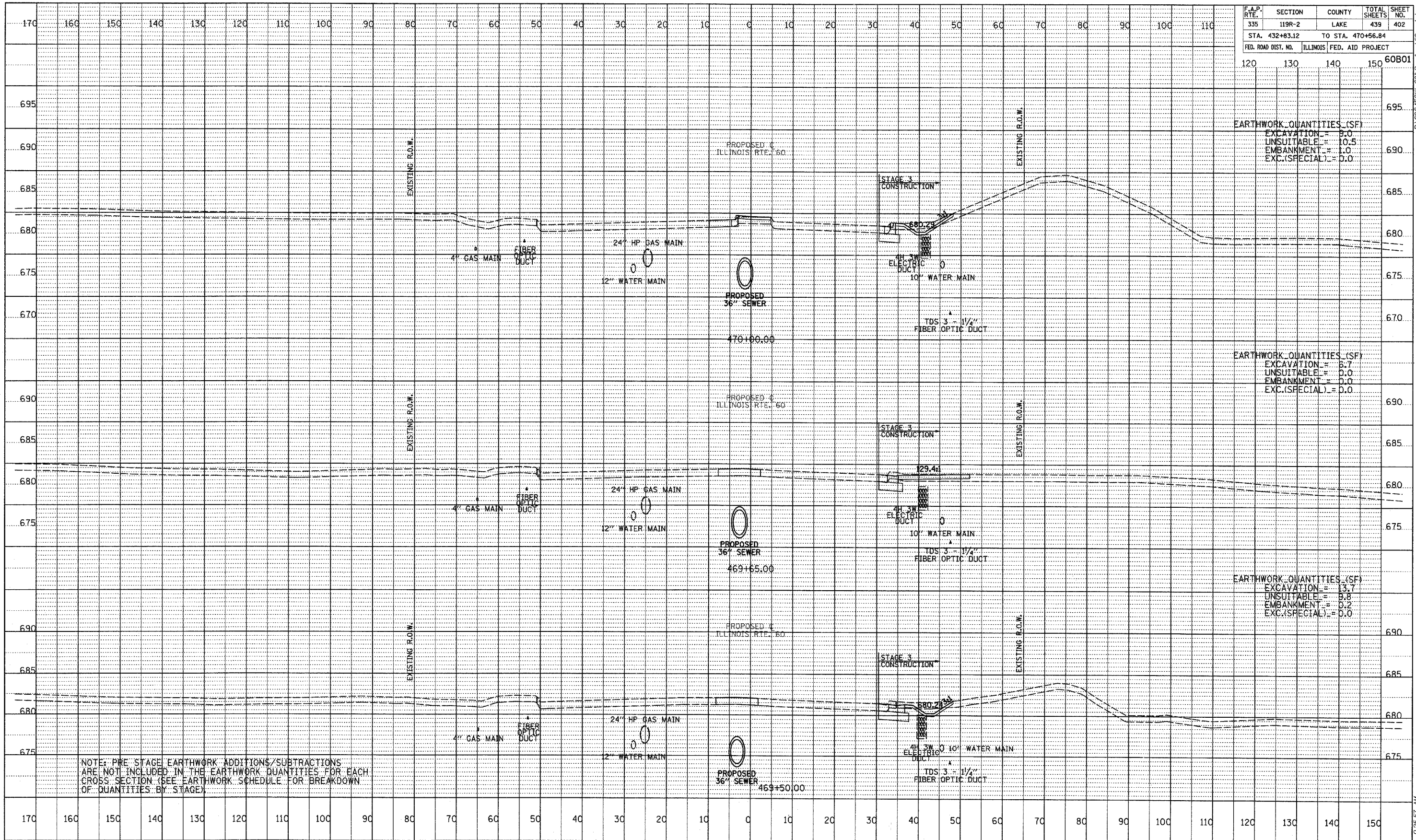
EARTHWORK QUANTITIES (SF)	
EXCAVATION	= 5.0
UNSUITABLE	= 10.5
EMBANKMENT	= 1.0
EXC.(SPECIAL)	= 0.0

EARTHWORK QUANTITIES (SF)	
EXCAVATION	= 3.7
UNSUITABLE	= 0.0
EMBANKMENT	= 0.0
EXC.(SPECIAL)	= 0.0

EARTHWORK QUANTITIES (SF)	
EXCAVATION	= 13.7
UNSUITABLE	= 9.8
EMBANKMENT	= 0.2
EXC.(SPECIAL)	= 0.0

NOTE: PRE STAGE EARTHWORK ADDITIONS/SUBTRACTIONS ARE NOT INCLUDED IN THE EARTHWORK QUANTITIES FOR EACH CROSS SECTION (SEE EARTHWORK SCHEDULE FOR BREAKDOWN OF QUANTITIES BY STAGE)

DATE: _____ BY: _____
 PROFILE NUMBER: _____
 NOTE BOOK NO.: _____
 STRUCTURE NO./A/RIS CURB NO.: _____



TYLIN INTERNATIONAL



ILLINOIS RTE. 60 (TOWNLIN RD)
 STA. 469+50 TO STA. 470+00

P:\60245811-60\Road\Map60\sheet.dgn 9:25:57 AM 5/7/2007