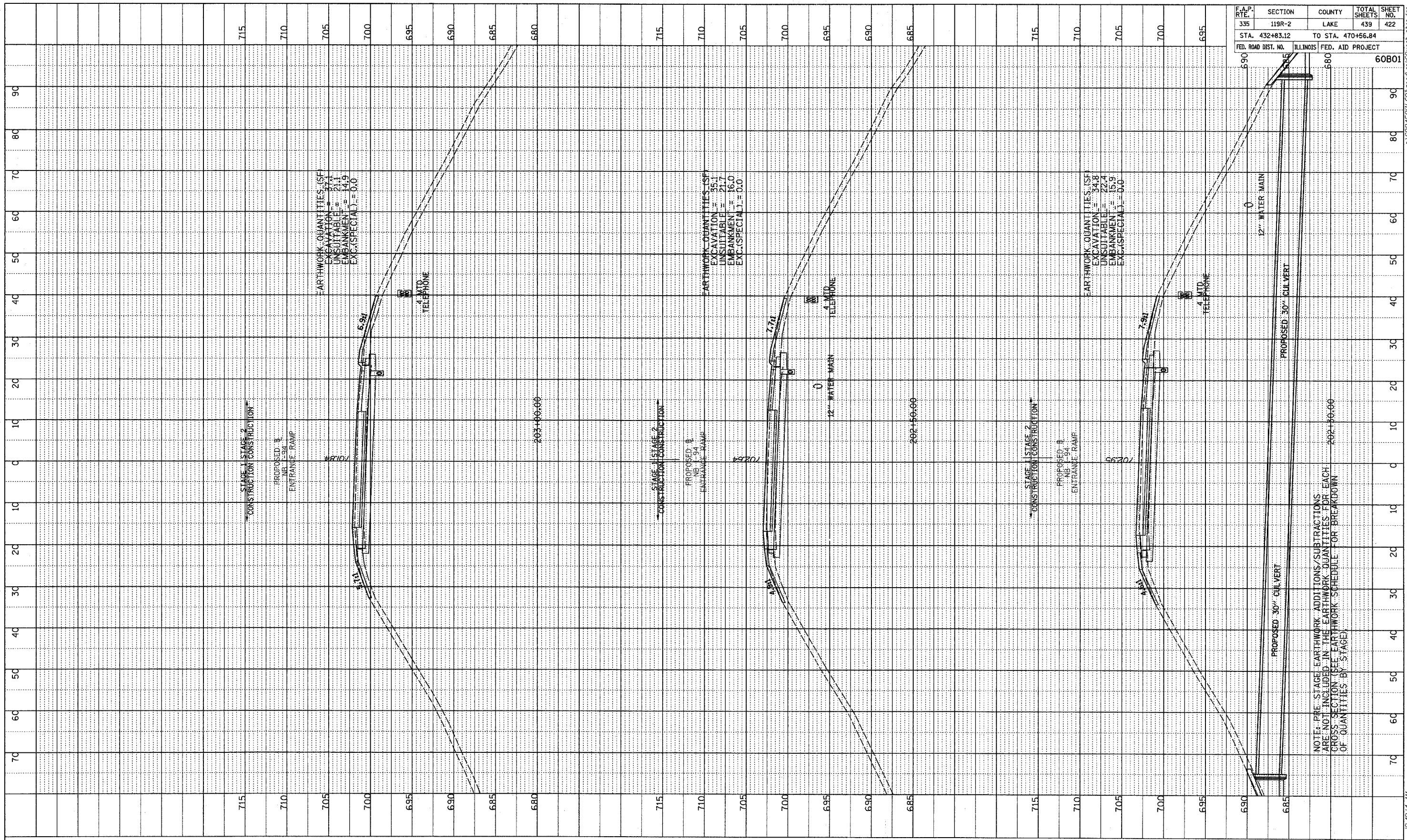
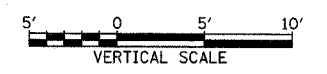
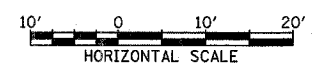


PROFILE
 REVISIONS
 DATE
 BY
 NO. 1
 NOTE BOOK
 GRADES CHECKED
 STRUCTURE NOTATIONS CHECKED



F.A.P. RTE.	SECTION	COUNTY	TOTAL SHEETS	SHEET NO.
335	119R-2	LAKE	439	422
STA. 432+83.12		TO STA. 470+56.84		
FED. ROAD DIST. NO.		ILLINOIS FED. AID PROJECT		60801

TYLINT INTERNATIONAL



NB I-94 ENTRANCE RAMP
 STA. 202+30 TO STA. 203+00

NOTE: PRE-STAGE EARTHWORK ADDITIONS/SUBTRACTIONS ARE NOT INCLUDED IN THE EARTHWORK QUANTITIES FOR EACH CROSS SECTION (SEE EARTHWORK SCHEDULE FOR BREAKDOWN OF QUANTITIES BY STAGE)

5/7/2007 10:10:14 AM P:\62158\11501\road\mk60\sssh_ramp.dgn