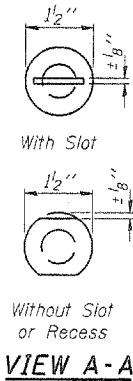
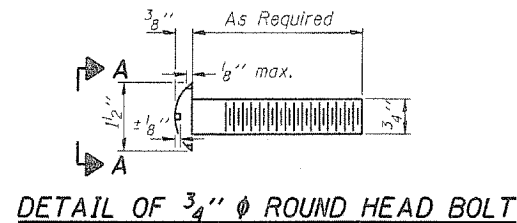


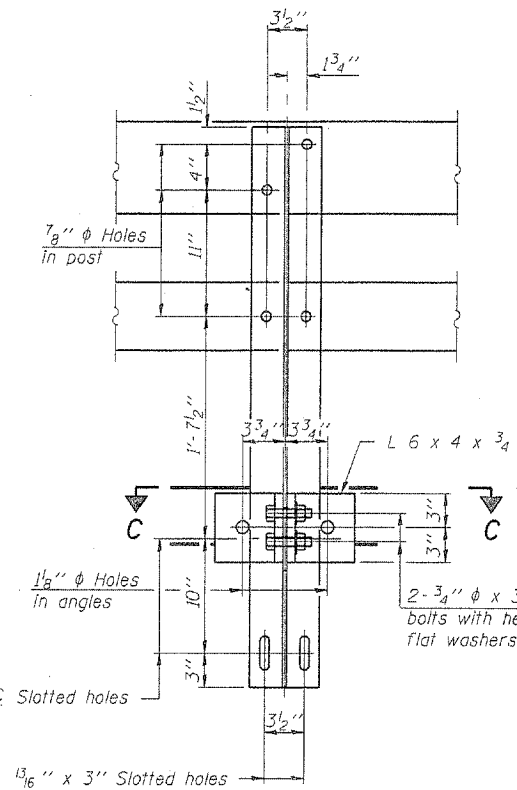
STATE OF ILLINOIS
DEPARTMENT OF TRANSPORTATION

ROUTE NO.	SECTION	COUNTY	SHEET NO.	SET	SHEET NO. 8 10 SHEETS
SA 13	*	Kane	21	14	
FED. ROAD DIST. NO. 7		ILLINOIS	FED. AID PROJECT		

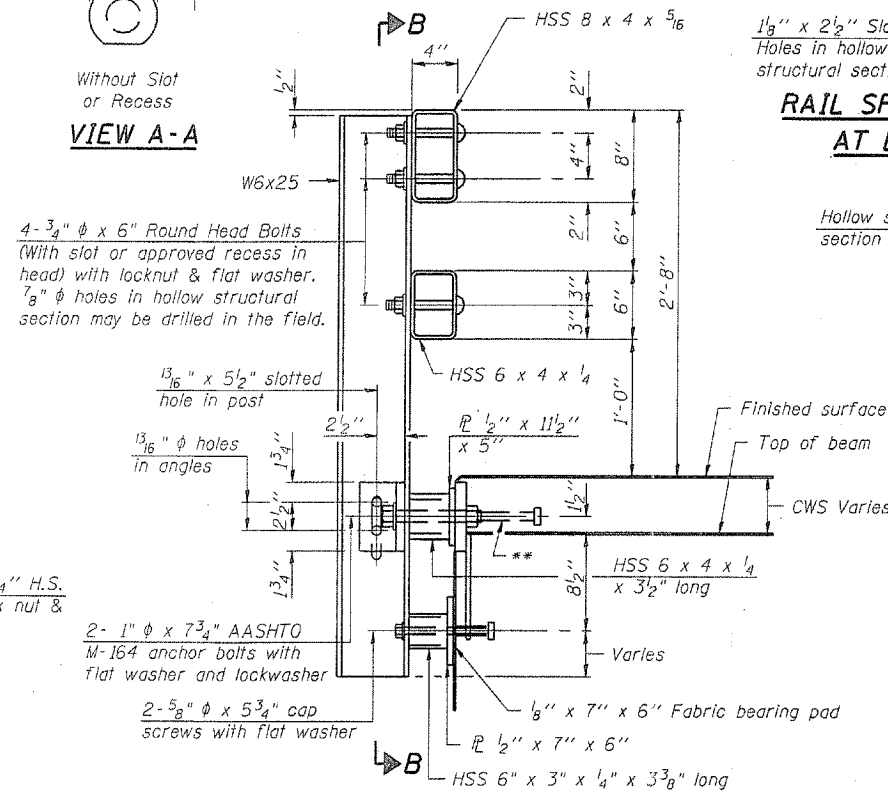
CONTRACT # 60BB1 * 49 B-E-1



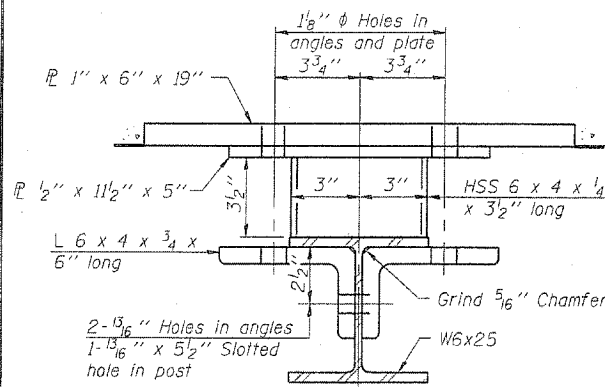
VIEW A-A



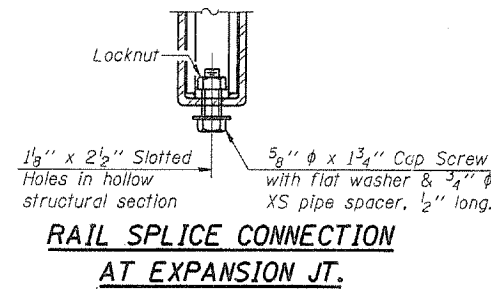
SECTION B-B



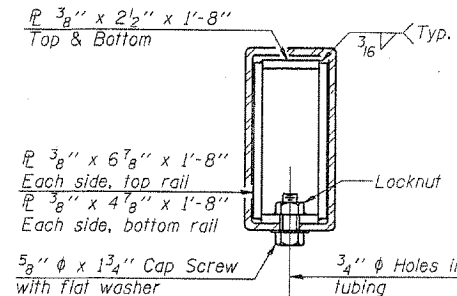
SECTION AT RAIL POST



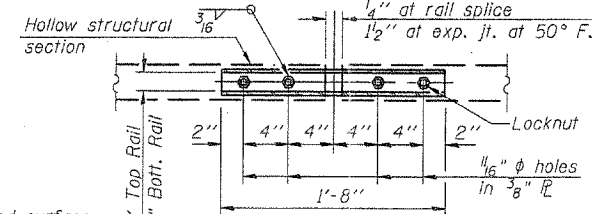
SECTION C-C



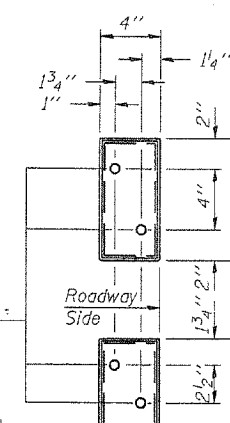
RAIL SPLICE CONNECTION
AT EXPANSION JT.



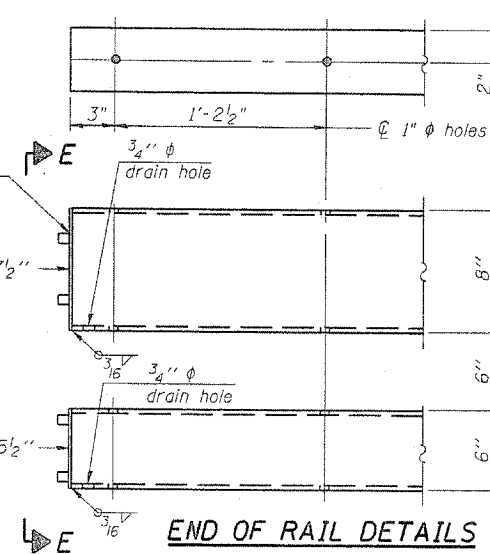
SECTION AT
RAIL SPLICE



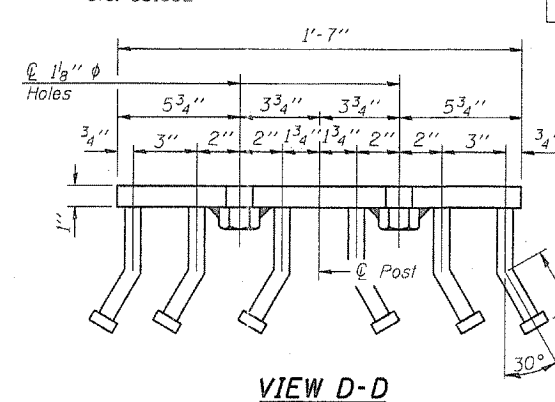
PLAN-BOTT. SPLICE P
TYPICAL



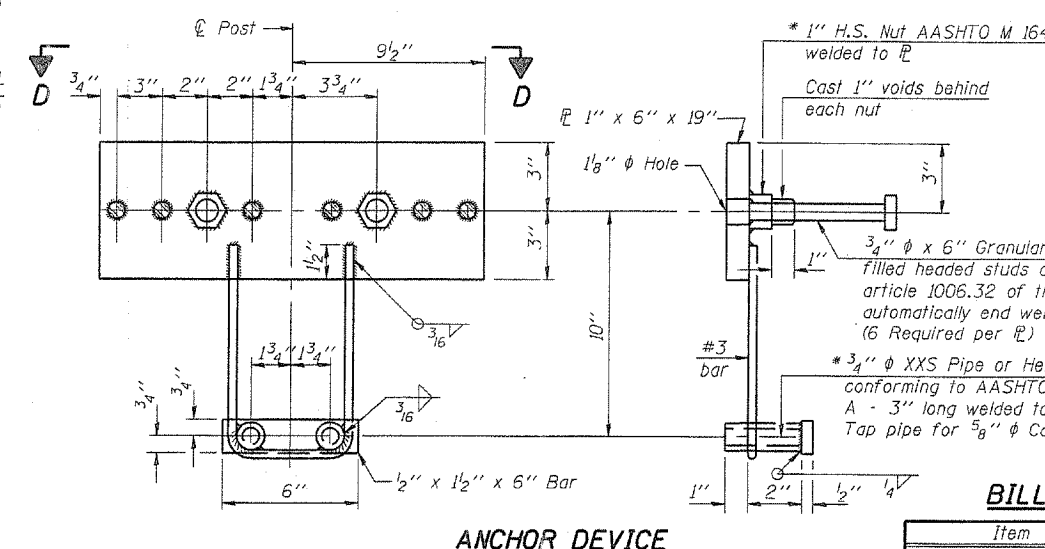
VIEW E-E



END OF RAIL DETAILS



VIEW D-D



ANCHOR DEVICE

Notes:
All field drilled holes shall be coated with an approved zinc rich paint before erection.
For multi-span bridges, sufficient 1/4" x 6" x 1'-2" galvanized steel shims shall be provided to align rail between adjacent spans. Cost included with Steel Bridge Rail, Type SM.
Steel rail elements shall be galvanized according to Article 509.05 of the Standard Specifications.
** The studs of the anchor devices shall be placed below the top reinforcement bars and the outermost longitudinal reinforcement bar shall be placed directly above the studs of the rail post anchor device.

STEEL RAILING, TYPE SM
WITH CONCRETE WEARING SURFACE
S.A. 13 (IL RTE. 25)
OVER NORTON CREEK
S.A. RTE. 13 (F.A.S. 106)
KANE COUNTY, STA. 61+92.50
STRUCTURE NO. 045-0045

BILL OF MATERIAL

Item	Unit	Quantity
Steel Railing, Type SM	Foot	128

STS Consultants
111 NE Jefferson Ave.
Peoria, Illinois 61602
Ph(309)676-8464
FAX(309)676-5445
IL Design Firm Reg. No. 184-001518

DESIGNED DDB	200
CHECKED LLV	
DRAWN MGM	
CHECKED DDB	
R-34CWS	

11-1-06 (16'-3" Maximum Post Spacing) (5" minimum to 7/8" maximum CWS thickness)