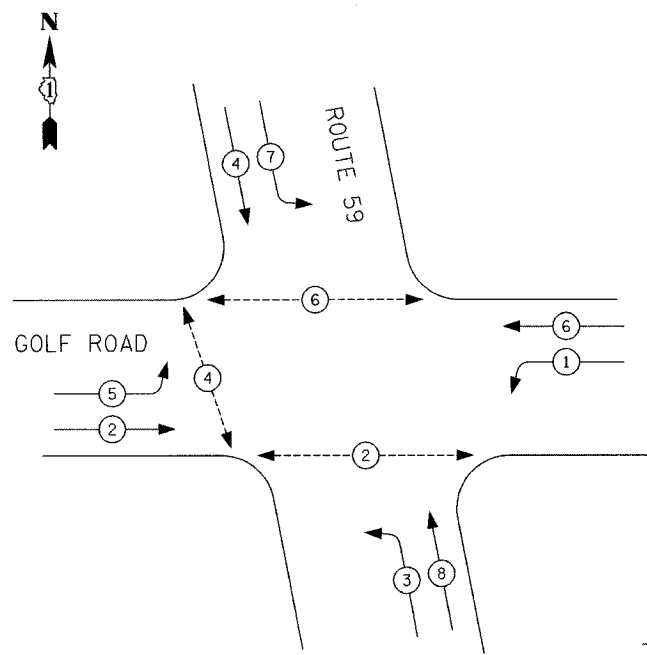


F.A.J. RTE.	SECTION	COUNTY	TOTAL SHEETS	SHEET NO.
1320	581EXT-BR	COOK	46	17
FED. ROAD DIST. NO.		ILLINOIS FED. AID PROJECT		

CONTROLLER SEQUENCE IV

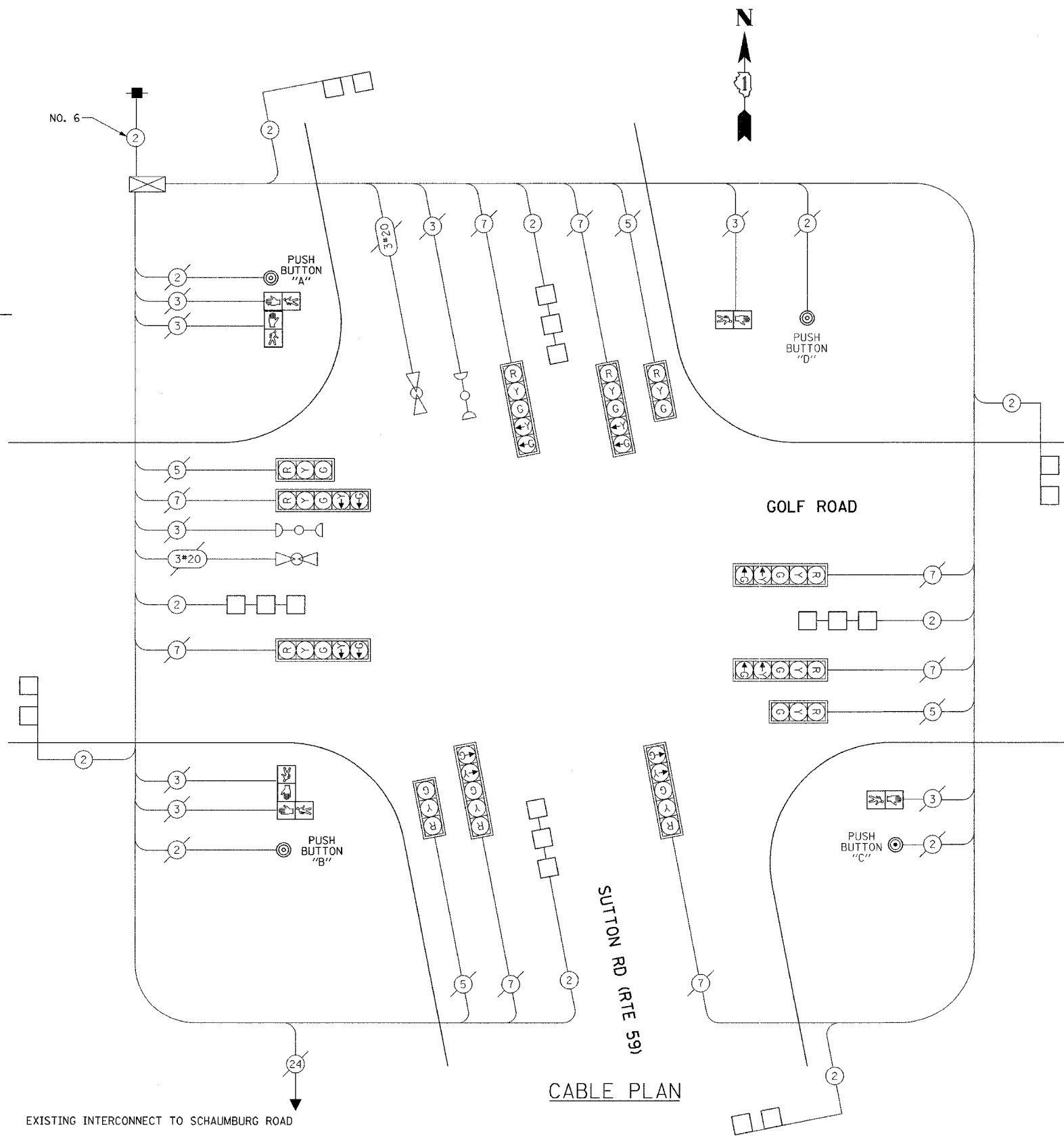


TEMPORARY PHASE DESIGNATION DIAGRAM

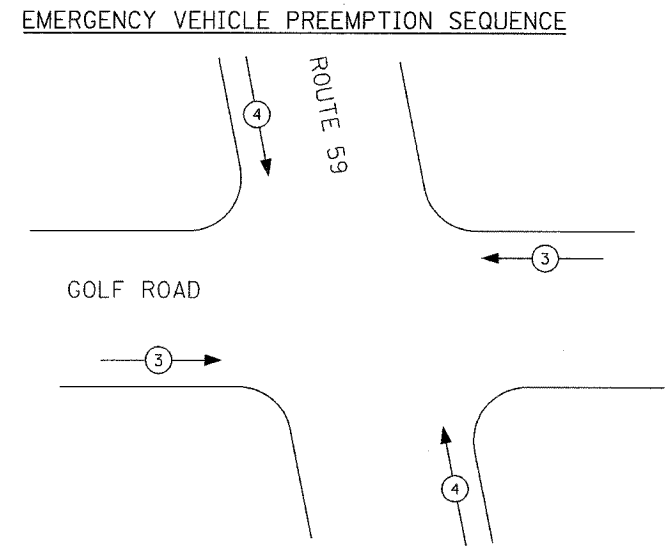
LEGEND:

- ← * → DUAL ENTRY PHASE
- ← * → DUAL ENTRY PHASE
- ← * → PEDESTRIAN PHASE
- * NUMBER REFERS TO ASSOCIATED PHASE

PUSH BUTTON "A" SHALL PLACE A CALL IN PHASES 4 AND 6
 PUSH BUTTON "B" SHALL PLACE A CALL IN PHASES 2 AND 4
 PUSH BUTTON "C" SHALL PLACE A CALL IN PHASE 2
 PUSH BUTTON "D" SHALL PLACE A CALL IN PHASE 6



CABLE PLAN



EMERGENCY VEHICLE PREEMPTOR	3	4
MOVEMENT	↓ ↑	← →

CABLE PLAN LEGEND:

- | | | |
|-----------------|-----------------|---|
| PROPOSED | EXISTING | |
| [G] | [G] | 8" TRAFFIC SIGNAL SECTION |
| [R] | [R] | 12" TRAFFIC SIGNAL SECTION |
| [W] | [W] | 12" PEDESTRIAN SIGNAL SECTION |
| [P] | [P] | 12" PEDESTRIAN SIGNAL SECTION |
| [Cabinet] | [Cabinet] | CONTROLLER CABINET |
| [Service] | [Service] | SERVICE INSTALLATION |
| [Loop] | [Loop] | VEHICLE DETECTOR, INDUCTION LOOP |
| [Magnetic] | [Magnetic] | MAGNETIC DETECTOR |
| [Light] | [Light] | EMERGENCY VEHICLE LIGHT DETECTOR |
| [Beacon] | [Beacon] | CONFIRMATION BEACON |
| [Push] | [Push] | PUSHBUTTON DETECTOR |
| (2) | (2) | DENOTES NUMBER OF CONDUCTORS, ALL CABLE NO. 14 EXCEPT AS INDICATED. ALL LOOP DETECTOR CABLE TO BE SHIELDED. |
| [R Y G] | [R Y G] | SIGNAL FACE WITH BACK PLATE |
| [R Y G "P"] | [R Y G "P"] | "P" INDICATES PROGRAMMED HEAD |
| [R Y G "E"] | [R Y G "E"] | "E" INDICATES EXISTING SIGNAL HEAD OR EXISTING PEDESTRIAN SIGNAL HEAD |

NAME	DATE

ILLINOIS DEPARTMENT OF TRANSPORTATION
 FAP 1320 (IL 58 GOLF ROAD)
 OVER POPLAR CREEK
**PROPOSED TRAFFIC SIGNAL
 CABLE PLAN**
 SCALE: NOT TO SCALE
 DATE 7/20/07
 DRAWN BY: AJR
 CHECKED BY: RS