

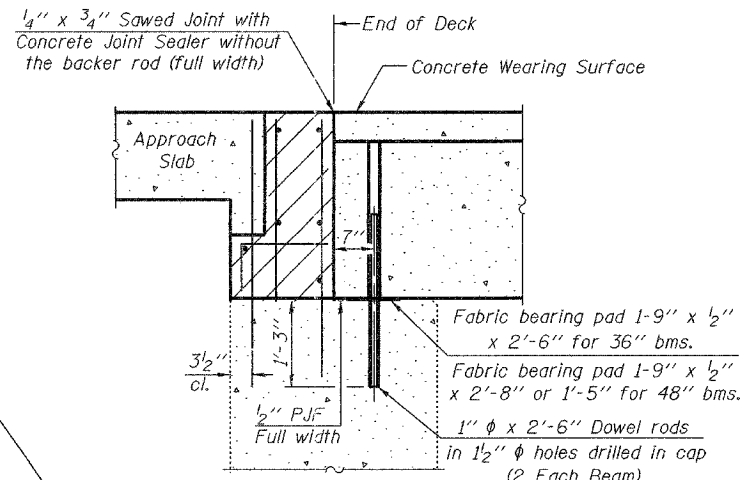
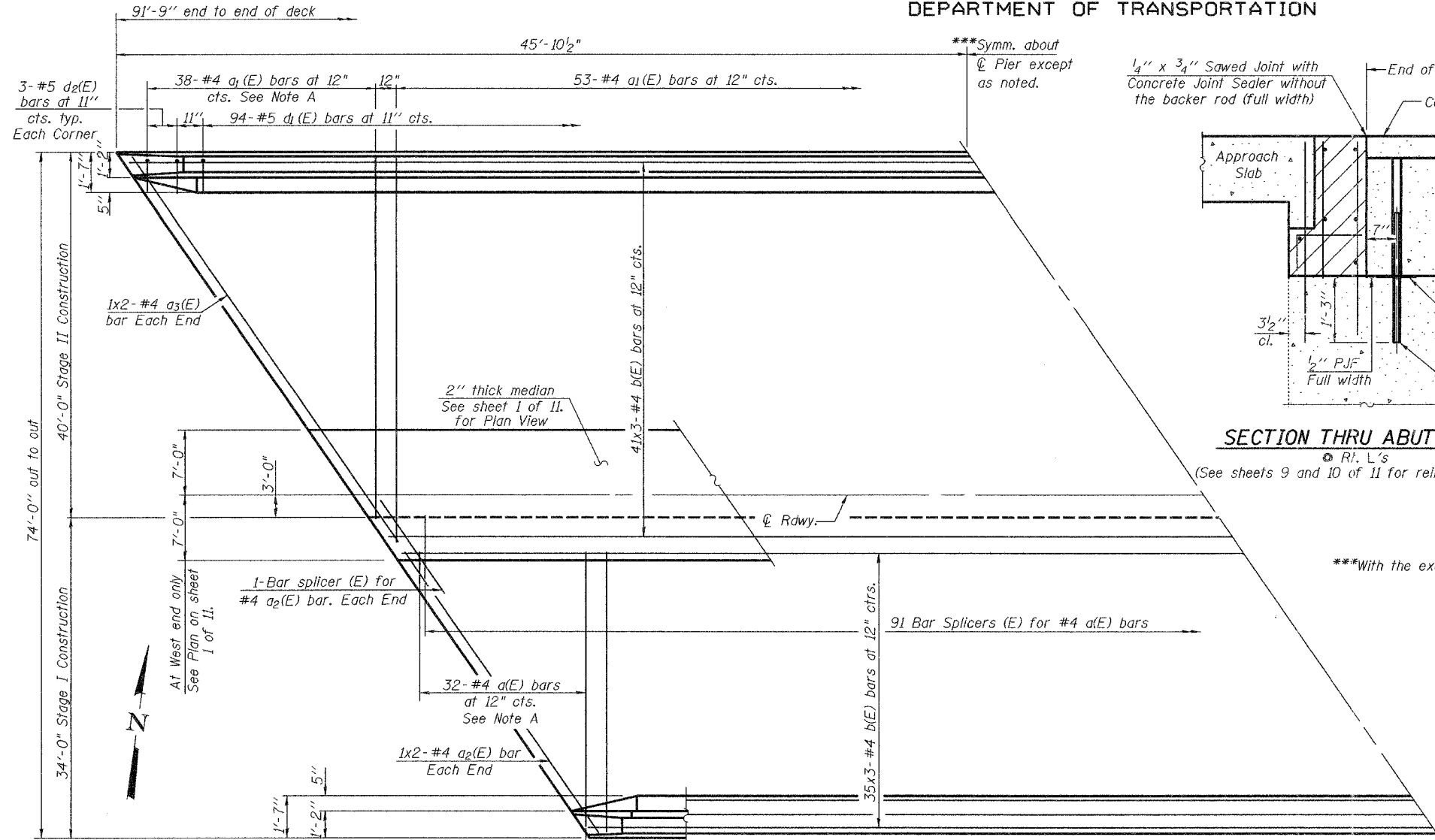
STATE OF ILLINOIS
DEPARTMENT OF TRANSPORTATION

MIN. BAR LAP

#4 bar = 1'-4"
#5 bar = 1'-8"

ROUTE NO.	SECTION	COUNTY	TOTAL SHEETS	SHEET NO.	SHEET NO. 6
F.A.U. 1320 (IL58)	581 EXT -BR	COOK	46	25	11 SHEETS
FED. ROAD DIST. NO. 7	ILLINOIS	FED. AID PROJECT-			

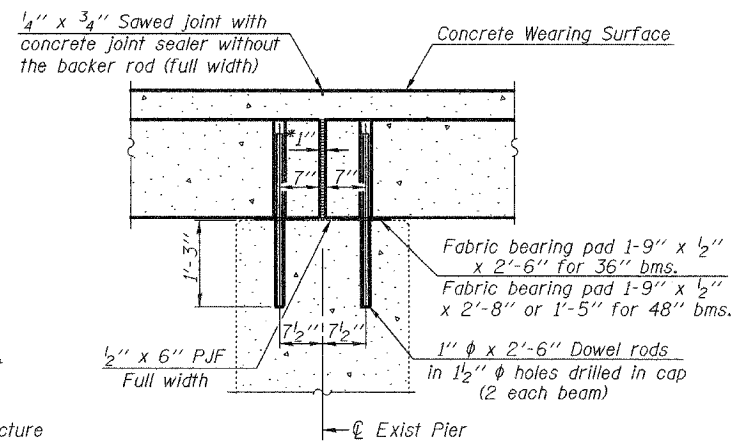
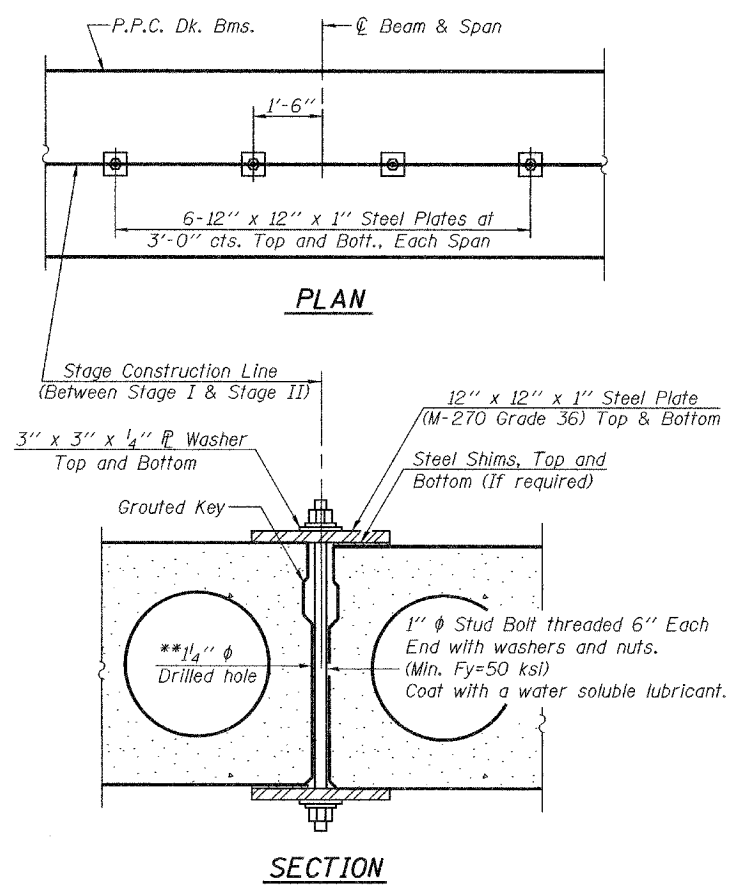
Contract #60B82



SECTION THRU ABUTMENT

© Rt. L's
(See sheets 9 and 10 of 11 for reinforcement bars.)

***With the exception of the 2" median.



SECTION THRU FIXED PIER

© Rt. L's
*1" Jt. shall be filled with non-shrink grout. 1" dimension may vary to accommodate tolerance in beam lengths.

Notes: Bars indicated thus 35 x 3-#4 etc. indicates 35 lines of bars with 3 lengths per line.
After beams have been erected, holes shall be drilled into substructure and dowel rods placed. Dowel holes shall be filled with non-shrink grout to top of beam and allowed to cure min. 24 hours prior to grouting the shear keys.
See sheets 4 and 5 of 11 for Fabric Bearing Pad Details
Concrete Wearing Surface to be poured after grouting the shear keys.
Dowel rods drilled in cap are included in the Cost of Precast Prestressed Concrete Deck Beams, (21" Depth).
Hatched areas to be poured after concrete wearing surface is in place and cured. Quantity included with Concrete Superstructure on sheet 7 of 11.

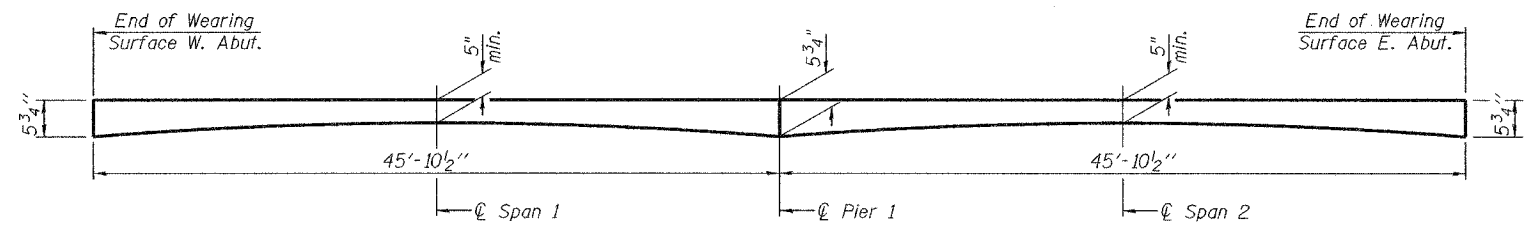
SHEAR KEY CLAMPING DETAILS AT CONST. JT. BETWEEN STAGE I AND STAGE II

Cost included with Precast Prestressed Concrete Deck Beams, (21" Depth). See Stage Construction Details for traffic lanes.

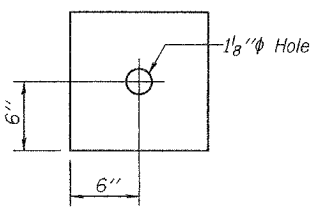
**As an alternate to the drilled holes, the Contractor may request the Fabricator to cast 2" diameter semi-circular recesses in the sides of each beam adjacent to the stage construction line. These recesses should align to form a hole at the appropriate locations for the clamping device bolts. If the Contractor elects to use this alternate, the details shall be identified on the shop drawings.

Note A: Order a(E) and a₁(E) bars full length. Cut to fit skew and use remainder of bars in opposite end.

PARTIAL WEARING SURFACE PLAN
(Span 1 Shown, Span 2 Similar except for Median)



REINFORCED CONCRETE WEARING SURFACE DIAGRAM



CLAMPING PLATE

DESIGNED	Dhruv P. Narielwala
CHECKED	Stephen M. Ryan
DRAWN	R. Sommer
CHECKED	DPN/SMR

EXAMINED	August 10 2007	Thomas J. Damagala
PASSED		Ralph E. Anderson