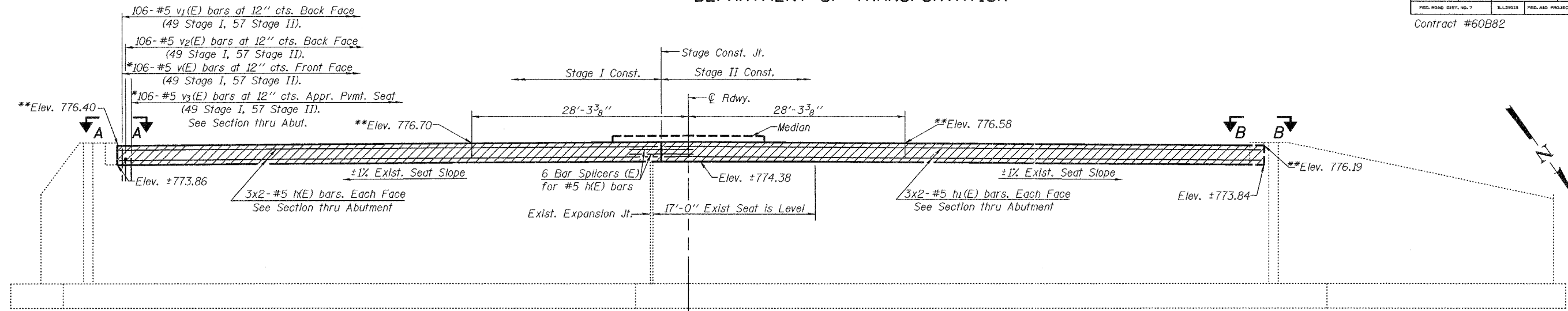


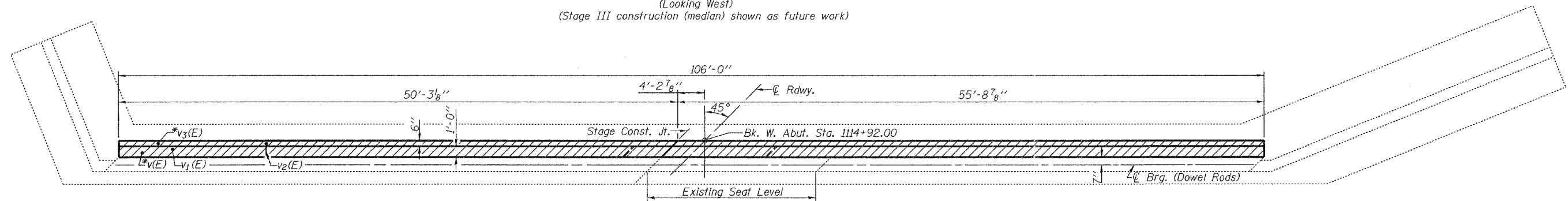
STATE OF ILLINOIS
DEPARTMENT OF TRANSPORTATION

ROUTE NO.	SECTION	COUNTY	TOTAL SHEETS	SHEET NO.	SHEET NO. 9 11 SHEETS
F.A.U. 1320 (IL 58)	581 EXT -BR	COOK	46	28	
FED. ROAD DIST. NO. 7	ILLINOIS	FED. AID PROJECT			

Contract #60B82



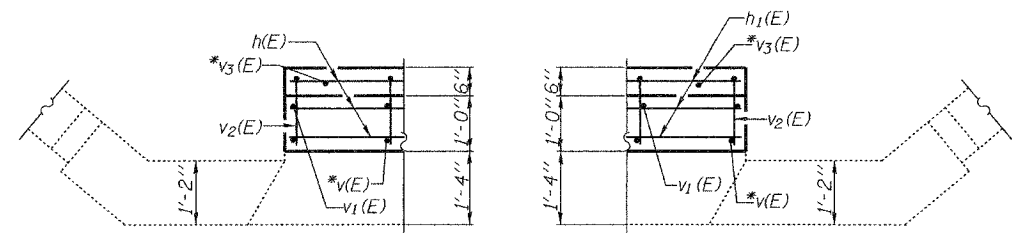
ELEVATION
(Looking West)
(Stage III construction (median) shown as future work)



PLAN

*Drill and grout v(E) and v₃(E) bars min. 9" according to Article 584 of the Standard Specifications.
 **Elevations given at Front Face of Hatched Block.

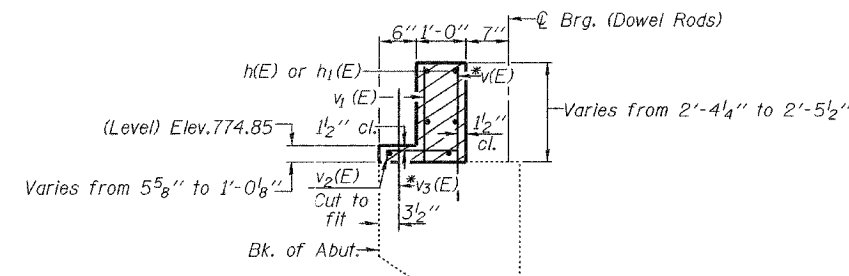
Notes: Hatched areas indicate proposed concrete construction. Hatched areas to be poured after Concrete Wearing Surface is in place and cured. Quantity of Concrete included with Concrete Superstructure on sheet 7 of 11. For Bar Splicer details see sheet 11 of 11.



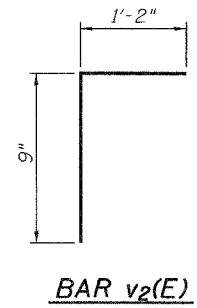
VIEW A-A

VIEW B-B

MIN. BAR LAP
 #5 bars = 1'-8"



SECTION THRU ABUTMENT
(at Rt. L's)



DESIGNED Dhruv P. Narietwala	August 10 2007
CHECKED Stephen M. Ryan	EXAMINED <i>Thomas J. Damagalki</i>
DRAWN R. Sommer	PASSED <i>Ralph E. Anderson</i>
CHECKED DPN/SMR	

WEST ABUTMENT
 F.A.U. RT. 1320 SEC. 581 EXT-BR
 COOK COUNTY
 STATION 1115+40.00
 STRUCTURE NO. 016-2087