

STATE OF ILLINOIS  
DEPARTMENT OF TRANSPORTATION

ROUTE NO.	SECTION	COUNTY	TOTAL SHEETS	SHEET NO.
846	4B-1-1-1	WILL	39	4
F. A. P.		ILLINOIS		
FED. ROAD DIST. NO. 7		FED. AID PROJECT-		

SHEET NO. S2  
SHEETS S20

CONTRACT NO. 60D26

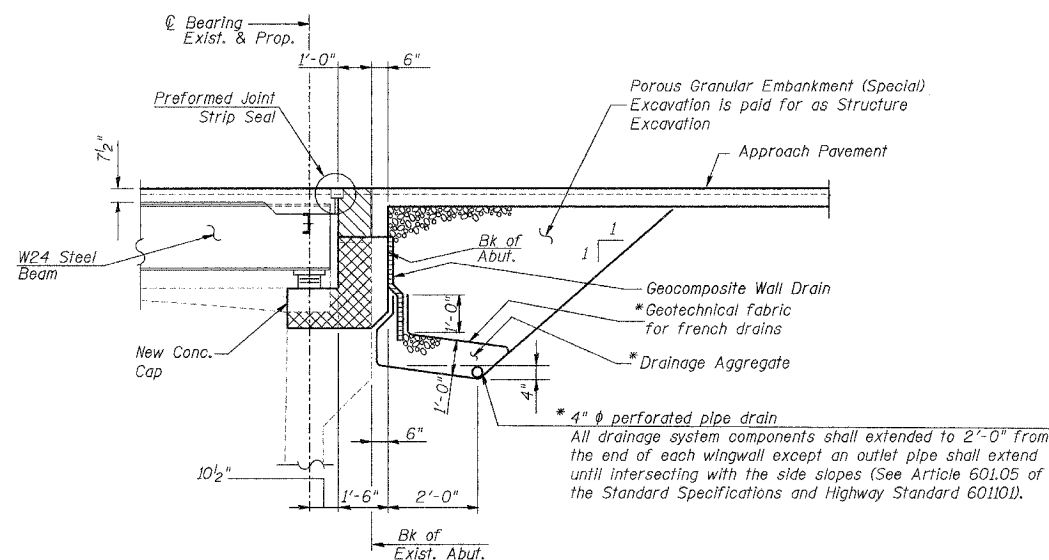
**GENERAL NOTES:**

- Fasteners shall be AASHTO M164 Type I, mechanically galvanized bolts. Bolts  $\frac{3}{4}$  in  $\phi$ , holes  $\frac{13}{16}$  in  $\phi$ , unless otherwise noted.
- Calculated weight of Structural Steel = 63,990 pounds (M270, Grade 50)  
8,830 pounds (M270, Grade 36)
- Anchor bolts shall be set before bolting diaphragms over supports.
- No field welding is permitted except as specified in the contract documents.
- Reinforcement bars shall conform to the requirements of ASTM A706 Grade 60 (IL modified). See Special Provisions.
- Reinforcement bars designated (E) shall be epoxy coated.
- Plan dimensions and details relative to existing plans are subject to routine variations. The Contractor shall field verify existing dimensions and details affecting new construction and make necessary approved adjustments prior to construction or ordering of materials. Such variations shall not be cause for additional compensation for a change in scope of the work, however, the Contractor will be paid for the quantity actually furnished based upon the unit price bid for the work.
- Bearing seat surfaces shall be constructed or adjusted to the designated elevations within a tolerance of  $\frac{1}{8}$  in (0.01 ft.). Adjustment shall be made either by grinding the surface or by shimming the bearings.
- The Inorganic Zinc Rich Primer / Acrylic / Acrylic Paint System shall be used for shop and field painting of new structural steel except where otherwise noted. The color of the final finish coat for all interior and exterior steel surfaces and bottom flanges of all beams shall be light warm gray, munsell No 10Y 7/1. See Special Provision for "Cleaning and Painting new Metal Structures".

- Load carrying components designated "NTR" shall conform to the Supplemental Requirements for Notch Toughness, Zone 2.
- Backfill shall be placed behind the abutment after the superstructure has been poured and falsework removed. See Article 502.10 of the Standard Specifications.
- A cantilevered sheet piling design does not appear feasible and additional members or other retention systems may be necessary. The Contractor shall submit a temporary soil retention system design including plan details and calculations for review and acceptance by the Engineer.
- All construction joints shall be bonded.
- Clean and relocate existing name plate adjacent to new plate. Cost included with Name Plates.
- Concrete Sealer shall be applied to the designated areas of the abutments.

**TOTAL BILL OF MATERIAL**

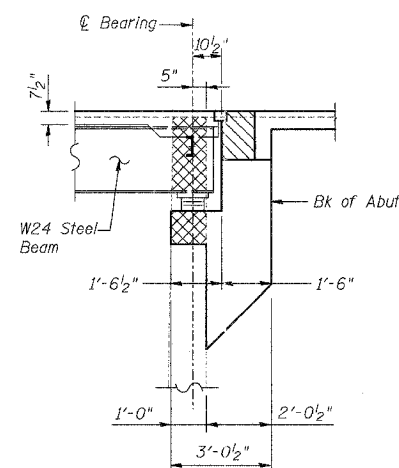
ITEM	UNIT	SUPER.	SUB.	TOTAL
Furnishing Structural Steel	L Sum	0.52	-	0.52
Furnishing Elastomeric Bearing Assembly, Type I	Each	18	-	18
Field Measurements	L Sum	0.52	-	0.52
Storage of Structural Steel and Bearings	Cal. Day	30	-	30



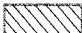

**SECTION THRU ABUTMENT**

(Section thru Abutment Extension Similar)


\* Included in the cost of Pipe Under Drains for Structures, 4".



**SECTION THRU ABUTMENT  
AT CURTAIN WALL**

 Area of Backwall to be constructed after removal of formwork for Superstructure  
 Area of Abutment to be constructed before placement of Superstructure

DESIGNED	NDS/GMK
CHECKED	MTP/SMK/GBC
DRAWN	NDS/DCB
CHECKED	SMK/GBC

ILLINOIS DEPARTMENT OF TRANSPORTATION  
**GENERAL NOTES, TOTAL BILL OF MATERIAL & SECTION THRU ABUTMENT**  
 FAP 846  
 NB IL. ROUTE 53 OVER PRAIRIE CREEK  
 STATION 1305+00 SECTION 4-RB  
 WILL COUNTY  
 STRUCTURE NO. 099-0090  
 SCALE: NONE  
 DATE: AUGUST 2007  
 DELTA ENGINEERING INC.  
 CONSULTING ENGINEERS, CHICAGO, ILLINOIS.