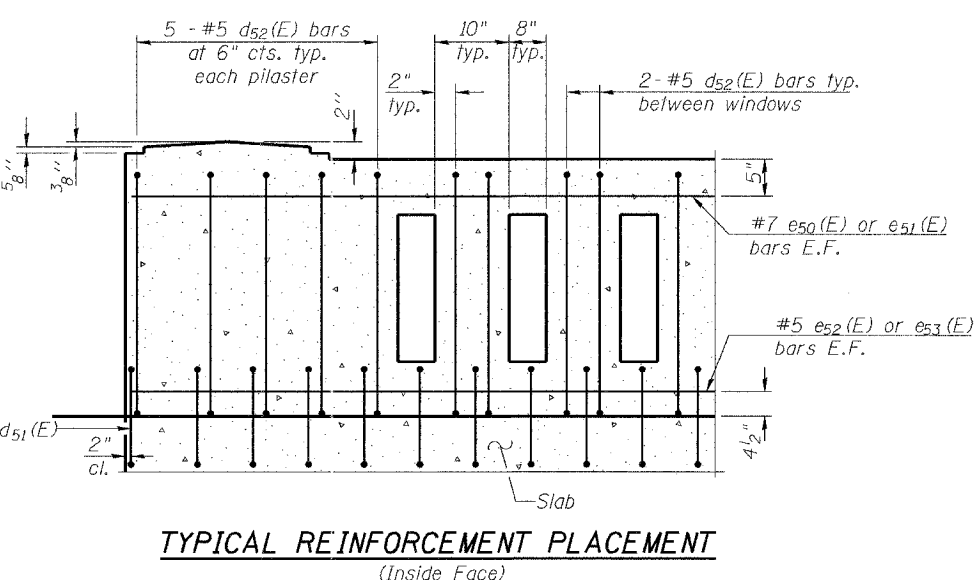
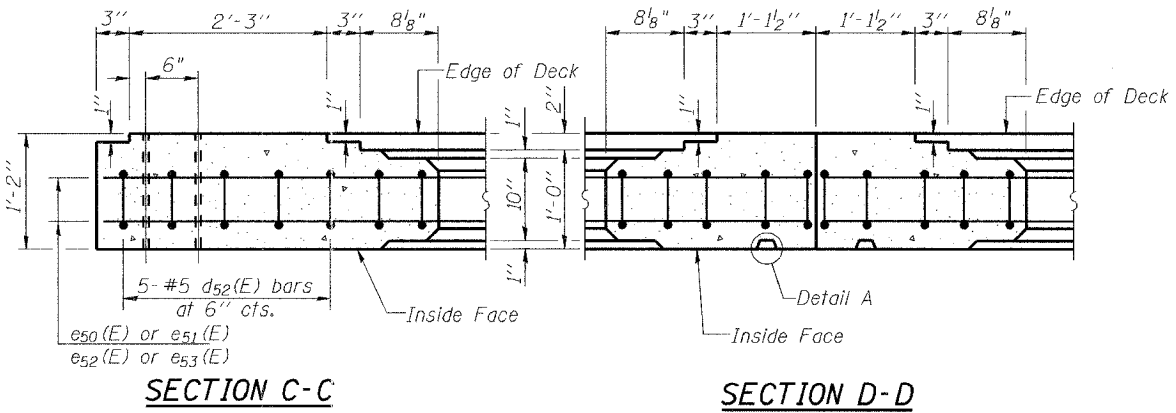
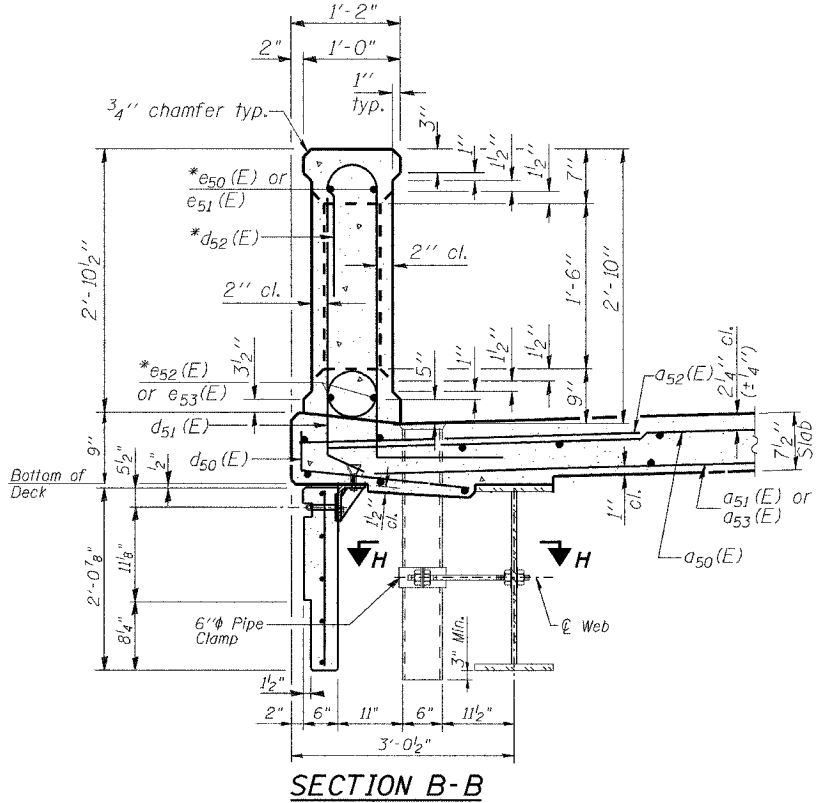
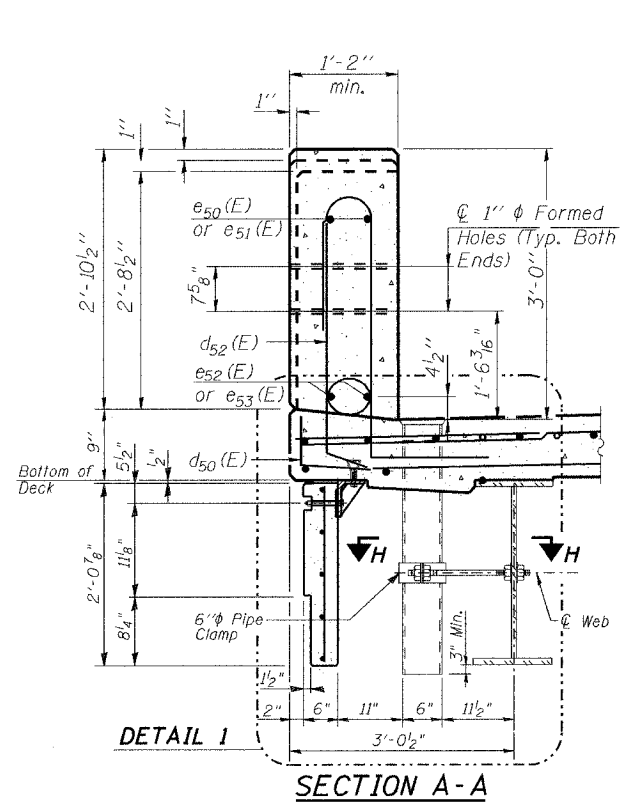
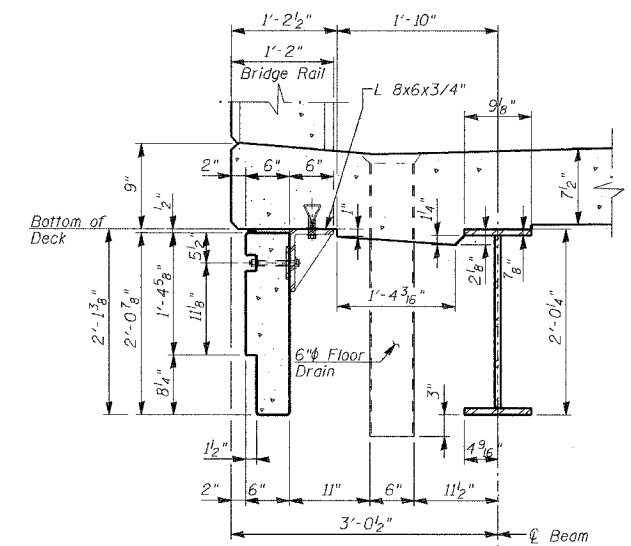
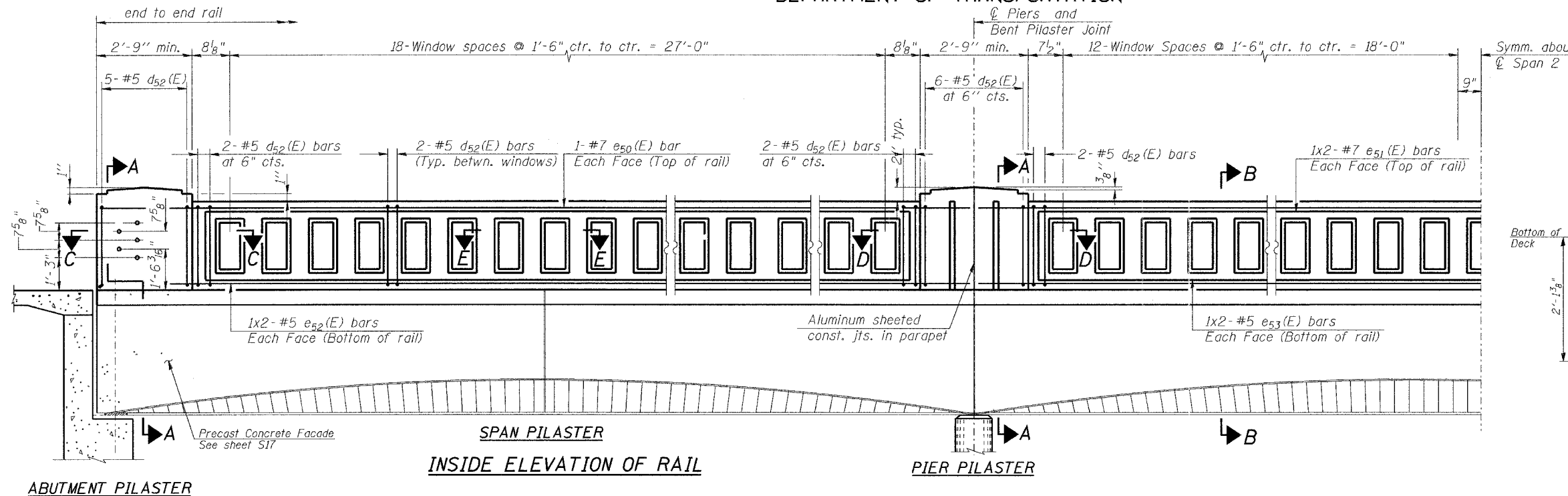


STATE OF ILLINOIS  
DEPARTMENT OF TRANSPORTATION

ROUTE NO. F. A. P. 846	SECTION 4B-1-1-1	COUNTY WILL	SHEET NO. 39	SHEET 8
SHEET NO. 56 SHEETS 520				

CONTRACT NO. 60D26



NOTE:  
Work this sheet together with sheet S5, S7 and S17.

THIS SHEET IS FOR INFORMATION ONLY

DESIGNED	NDS/GMK
CHECKED	MTP/SMK/GBC
DRAWN	BDB/DCB
CHECKED	SMK/GBC

Notes:  
All concrete for railing wall shall be Class BS according to Article 1020.04 of the Standard Specifications. Surface of railing shall receive a rubbed finish according to Article 503.15(b) of the Standard Specifications.  
All parts of the railing including concrete and reinforcing will be paid for at the contract unit price per foot for Concrete Bridge Rail Special.  
Holes and recesses must be formed or cored. Drilling is not permitted.

\* Bars e<sub>50</sub>(E) thru e<sub>53</sub>(E) & d<sub>52</sub>(E) are included in the cost of Concrete Bridge Rail, Special.

ILLINOIS DEPARTMENT OF TRANSPORTATION

CONCRETE BRIDGE RAILING  
(Sheet 1 of 2)  
FAP 846  
NB IL. ROUTE 53 OVER PRAIRIE CREEK  
STATION 1305+00 SECTION 4-RB  
WILL COUNTY  
STRUCTURE NO. 099-0090  
SCALE: NONE  
DATE: JUNE 2007

AEI DELTA ENGINEERING INC.  
CONSULTING ENGINEERS, CHICAGO, ILLINOIS